



SH1001



SH1002



SH1003



SH1004



SH1005



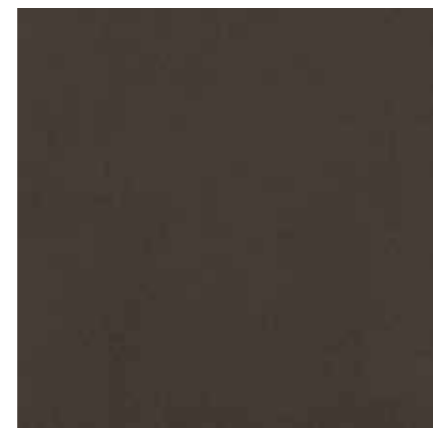
SH1006



SH1007



SH1008



SH1009

GOODRICH SOLUTIONS FABRIC F11 | SHUTTER

WITH GOODRICH,
Your habitat becomes
A gallery of
Your **self-expressions;**
A canvas for
Your **creativity;**
A space for
Your **soul;**
A showcase of
Your **taste for life;**

SHUTTER

GOODFABRIC



GOODRICH SOLUTIONS FABRIC F11 | SHUTTER

BLACKOUT FABRIC



We've got you Covered!



Stay Connected - www.goodrichglobal.com | info@goodrichglobal.com
Facebook: /Goodrich.Global.Singapore | Instagram: /goodrich_global | LinkedIn: /GoodrichGlobal | WeChat: /GoodrichChina
Twitter: /GoodrichGlobal | Pinterest: /goodrichglobal | YouTube: /GoodrichHQ | WhatsApp: /Goodrich_Global



SINGAPORE (HQ) | CHINA | HONG KONG (CHINA) | INDIA | INDONESIA | MALAYSIA | MYANMAR | PHILIPPINES | THAILAND | UNITED ARAB EMIRATES | VIETNAM

Copyright © 2020 Goodrich Global. All rights reserved.



GOODFABRIC
2020 - 2022.12

COMMERCIAL | HOSPITALITY | RESIDENTIAL

Product Specifications

New Design Code	Content	Width (cm)	Blackout Coating	Treatment
SH1001	100% PL	140	3 pass Foam	FR - BS 5852 Source 0 (Cigarette), NFPA 260 (UFAC Class 1), CAL TB 117 2013 (Sect 1)
SH1002				
SH1003				
SH1004				
SH1005				
SH1006				
SH1007				
SH1008				
SH1009				
SH1010	100% PL	140	3 pass Foam	FR - BS 5852 Source 0 (Cigarette), NFPA 260 (UFAC Class 1), CAL TB 117 2013 (Sect 1)
SH1011				
SH1012	100% PL	140	3 pass Foam	FR - BS 5852 Source 0 (Cigarette), NFPA 260 (UFAC Class 1), CAL TB 117 2013 (Sect 1)
SH1013				
SH1014				
SH1015	100% PL	140	3 pass Foam	FR - BS 5852 Source 0 (Cigarette), NFPA 260 (UFAC Class 1), CAL TB 117 2013 (Sect 1)
SH1016				
SH1017				
SH1018				
SH1019	100% PL	140	3 pass Foam	FR - BS 5852 Source 0 (Cigarette), NFPA 260 (UFAC Class 1), CAL TB 117 2013 (Sect 1)
SH1020				
SH1021				
SH1022				
SH1023				

Fabric Care & Maintenance

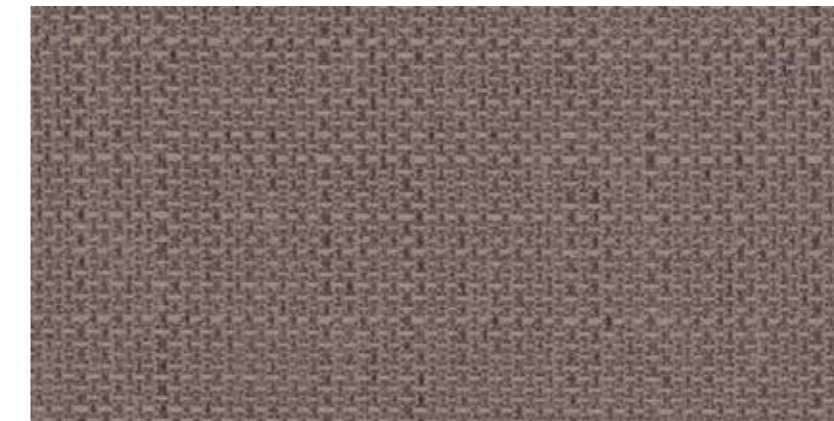
- Separate man-made fabrics, like polyester from natural fibers such as cotton. Man-made fibers can attract the oils that are released from natural fibers during washing. These oils can build-up and make spots more noticeable.
- Fabrics which generate lint should be washed separately.
- If dyes run, continue to wash the garment separately until no color runs.
- Lift and gently scrape off any excess material from the fabric. Use a cloth or towel to gently blot and soak up any liquid. DO NOT rub. Rubbing can spread the stain and cause oil to penetrate deeper into the fabric.
- If stains aren't entirely removed after washing, try rewashing the item.
- Allowing the item to dry, or putting it in the dryer, can set the stain for good.
- If the washer is too full, the fabric may not get washed properly. Also all the detergent may not be dissolved, leaving blobs of detergent paste on the fabric.
- Wash in hot/warm water using a permanent-press cycle to minimize wrinkling. If your machine does not have a permanent-press cycle, use warm or cool water.
- DO NOT allow fabrics to be left in the dryer too long, which can "set" wrinkles, increase static cling, and cause shrinkage.



SH1010



SH1011



SH1012



SH1016



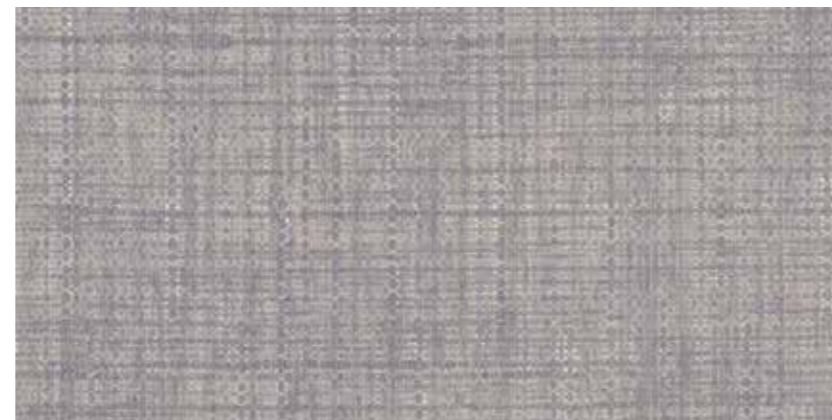
SH1017



SH1018



SH1019



SH1013



SH1015



SH1014



SH1020



SH1021



SH1022



SH1023