



Chiaro

Visualize | Realize | The leather you imagine, and more.

 **CORTINA**
LEATHERS

Chiaro

Visualize | Realize | The leather you imagine, and more.

Chiaro is a smooth, high-gloss aniline leather with tremendous clarity and depth. It has both oil and wax treatments, making the stain and wear performance strong for an aniline leather. As with all aniline leathers, color will vary across the hide and from hide to hide. Chiaro showcases, rather than hides, the natural markings that make each piece of this organic product unique. Made in Italy from European hides, Chiaro is a beautiful leather for a wide range of applications and is offered in many rich, design-inspired colors.

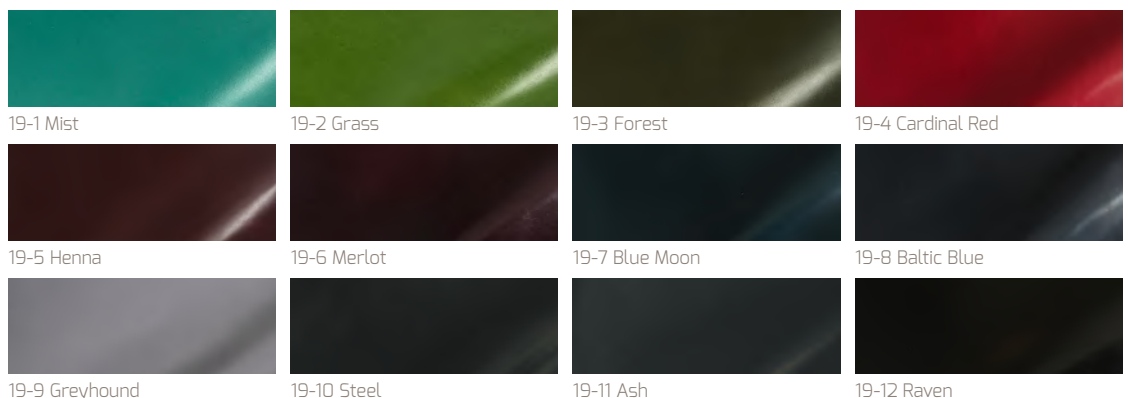
Note: Environmentally friendly Chiaro is lead free, emits low VOCs and has achieved an Indoor Gold Advantage certificate from SCS.

Technical Specifications

| | |
|----------------------|---|
| Origin | Italy |
| Raw Material | Top grain, European bovine |
| Leather Type | Aniline |
| Hide Size | 50 – 55 sq.ft. |
| Thickness | 1.0 – 1.2 mm |
| Abrasion Resistance | ASTM D7255: CS10 Taber Wheel 1,000 Cycles/500 gram weight |
| Light Fastness | ISO 102-B05: Blue Wool Scale ≥ 3 |
| Wet Crocking | ASTM D5053: Class 4 |
| Flame Resistance | NFPA 260: Class 1; CAL TB117-2013 |
| Performance Category | 2 |
| Cleaning Code | 2 |



Available Colors (more on next page)



CORTINA
LEATHERS

New York, New York
Conneaut, Ohio

samples@cortinaleathers.com

Office: 800-338-6229

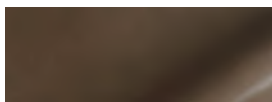
cortinaleathers.com

Chiaro

Available Colors (continued)



19-13 Parchment



19-14 Tawny



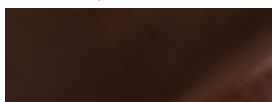
19-15 Boot



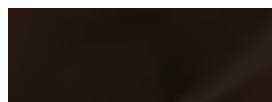
19-16 Burnt Orange



19-17 Harvest



19-18 Sienna



19-19 Chocolate

Performance Category 2

Leathers with Performance Category 2 retain their natural appearance while carrying additional protections against abrasion, staining and color fading. Aniline leathers with some protection and semi-anilines are found here. These leathers are suitable for a wide range of applications across a wide range of wear and stain risk, such as those found in commercial settings and dining areas. More information is available on our website at cortinaleathers.com/resources/performance/.

Care & Cleaning Code 2

Aniline leathers are designed to age gracefully, increasing in beauty over time. Very little care is required—general upkeep requires only an occasional dusting with a clean cloth. Never use oils, saddle soaps, harsh cleaners or cleaners containing abrasives on aniline leather. Periodically, you may wish to gently wipe the leather with a clean, slightly damp cloth to remove accumulated soil and allow it to air dry. Should a spill occur, remove immediately to avoid permanent discoloration by blotting (pressing gently without rubbing) with clean, dry sections of an absorbent cloth. Should soiling remain, a solution of lukewarm water and a mild soap such as Ivory® or a mild cleanser such as Woolite® may be used. Dampen a clean white cloth in the solution and gently wipe the affected area using a circular motion. Never apply the solution directly to the leather. Rinse completely with clean cloth which is damp with plain water until all cleaner is removed. Blot dry with a paper towels or dry cloth and allow to completely air dry. It may be necessary to repeat this procedure, allowing the leather to completely dry between applications. To avoid harming the leather, do not rub vigorously or for an extended period. It may not be possible to remove all stains from this natural product. More information is available on our website at cortinaleathers.com/resources/care-cleaning/.

Warranty

Leathers with Performance Category 2 have a 1 year limited warranty against manufacturing defects. See complete details at cortinaleathers.com/resources/warranty/.



CORTINA
LEATHERS

New York, New York
Conneaut, Ohio

samples@cortinaleathers.com

Office: 800-338-6229

cortinaleathers.com