

# CUSTOM CARPET

## COMMERCIAL | HOSPITALITY

2024







## About Goodrich

Goodrich Global is Asia's Leading supplier of wallcoverings, fabrics, carpets and flooring materials.

We are involved in virtually every aspect of the soft furnishing as well as the flooring industry, from production, sourcing, and distributing to marketing, brand and retailing. Our investment in branding created value in our market developments achieving customer satisfaction.

Goodrich is currently located in Singapore, China, Hong Kong (China), India, Indonesia, Malaysia, Myanmar, Philippines, Thailand, United Arab Emirates, and Vietnam.

With the largest service and installation team in the region, we work closely with the design firms and have particular expertise in providing wallcoverings, soft furnishings and flooring products for the following type of facilities.

- Hospitality Industry
- Health Care Facilities
- Commercial and Retail Buildings
- Educational Institutions
- Places of Interest
- Religious Buildings
- Residential Projects

Our Product Range is diverse and creative with an unlimited choice of colors, patterns, and textures.

# Contents

---

<b>About Goodrich</b>	01
Company Profile	

<b>Contents</b>	02
Table of Contents	

<b>Axminster Custom Order Process</b>	03
Custom Order Process	
Axminster Specifications	

<b>Axminster Artwork Theme</b>	
Floral	04 - 21
Geometric	22 - 39
Sphere	40 - 55
Stroke	56 - 77
Abstract	78 - 97

# Axminster Custom Order Process

---

## CUSTOM ORDER PROCESS

### ▼ Meeting

- Understand the overall design concept, specification, budget, quantity and delivery time.
- Selection of colour poms.
- If design is provided, please ensure there will be no copyright issues.

### ▼ Design Proposal

- Prepare computer graphic artwork which take about 3 to 7 working days.
- Note computer graphic artwork is for image reference only, actual colour refer to colour poms.

### ▼ Submission of Strike Off

- Upon confirmation of computer graphic artwork, will proceed for strike off production.
- Delivery time for strike off is 2 weeks.
- Note strike off represent colour and design only. It does not represent the real actual quality/density.

### ▼ Confirmation and Approval of Strike Off

- Confirm and approve the strike off to proceed for production.

### ▼ Place Order

- Place order to start production of the carpet.

### ▼ Delivery Time

- Production time 6 to 8 weeks depending on quantity, number of colours and subject to production schedule.
- Sea shipment vary depending on location.
- Please contact sales for more information.

## AXMINSTER SPECIFICATIONS

<b>Type</b>	Axminster Carpet					
<b>Width</b>	3660 mm or 4000 mm					
<b>Construction</b>	Woven					
<b>Face Yarn</b>	80% New Zealand & British Wool, 20% Nylon 6,6					
<b>Yarn Ply &amp; Count</b>	2 Ply - 740/2 TEX					
<b>Pitch</b>	7	7	7	7	7	7
<b>Rows</b>	7	8	9	10	11	12
<b>Pile Weight</b>	34 oz/sy	38 oz/sy	42 oz/sy	46 oz/sy	50 oz/sy	54 oz/sy
<b>Primary Backing</b>	Weft: Jute or Polypropylene ; Warp: Polyester/Cotton					



# Floral

---



SH1361-S303



SH1361-S23A





# Floral

---



SH1468-S14P (D5)



SH1468-S14P



SH1468-S53G

# Floral

---



SH0896-S12E



SH0896-S59B



SH0896-S14D

# Floral

---



SH0956-4B



# Floral

---



SH1360-S23A



SH1360-S10D

# Floral

---



GJZ152-E

# Floral

---



TJH3308-36A



TJH3308A-S44P



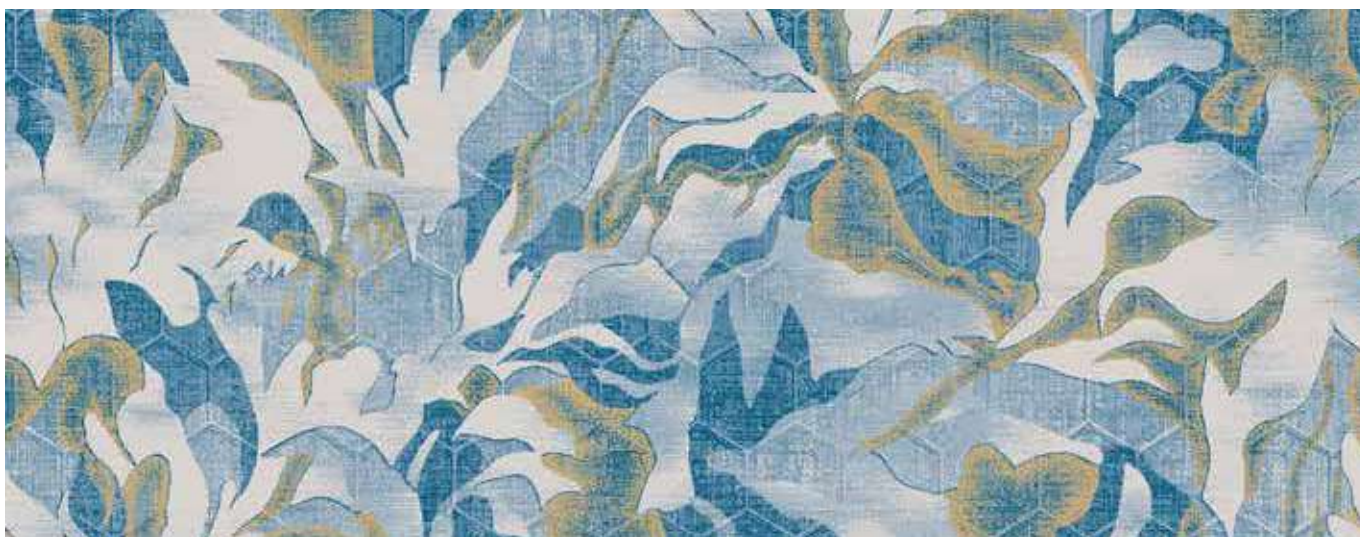


# Floral

---



SH2155A5



SH2155A2



SH2155A4

# Floral

---



SH0936-34D



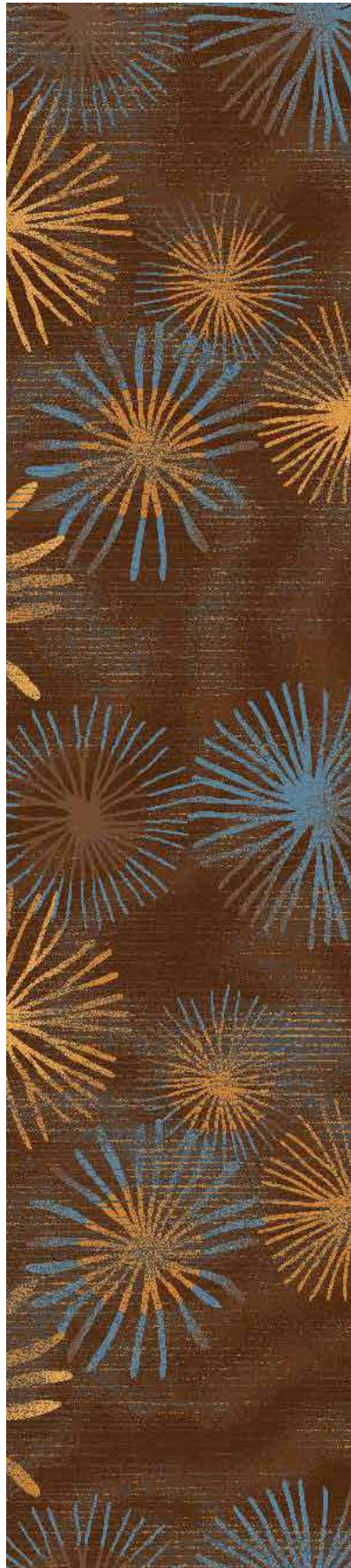
SH0936-6C

# Floral

---



SH0883-S29K



SH0883-S25P



SH0883-10A

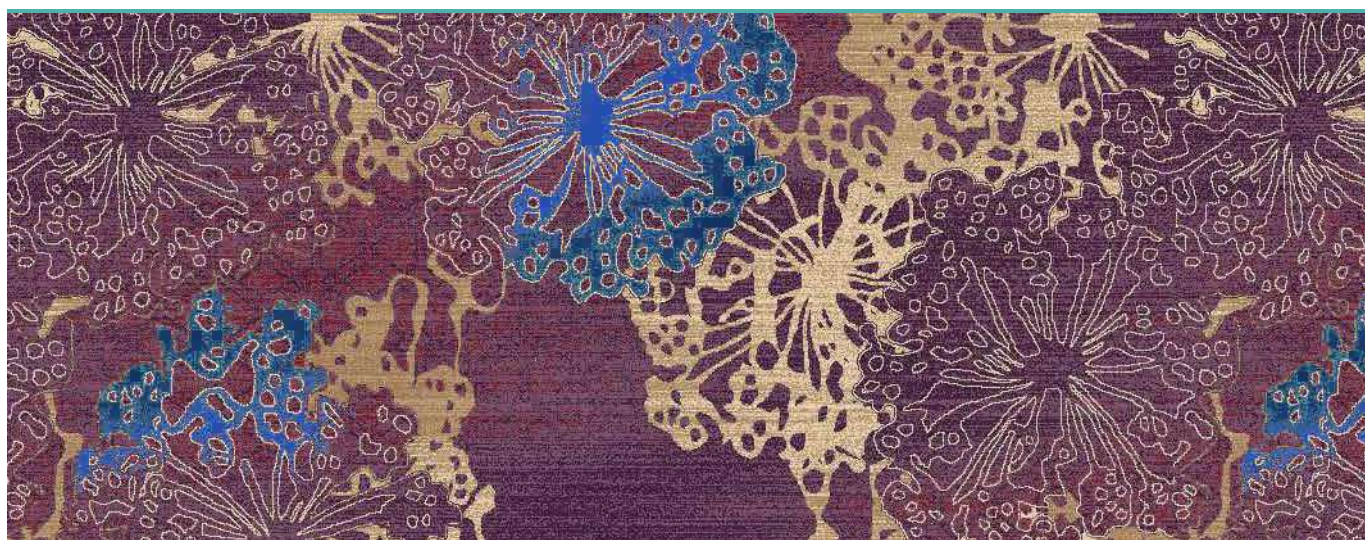


# Floral

---



SH1182-S31C



SH1182-S31C (D4)

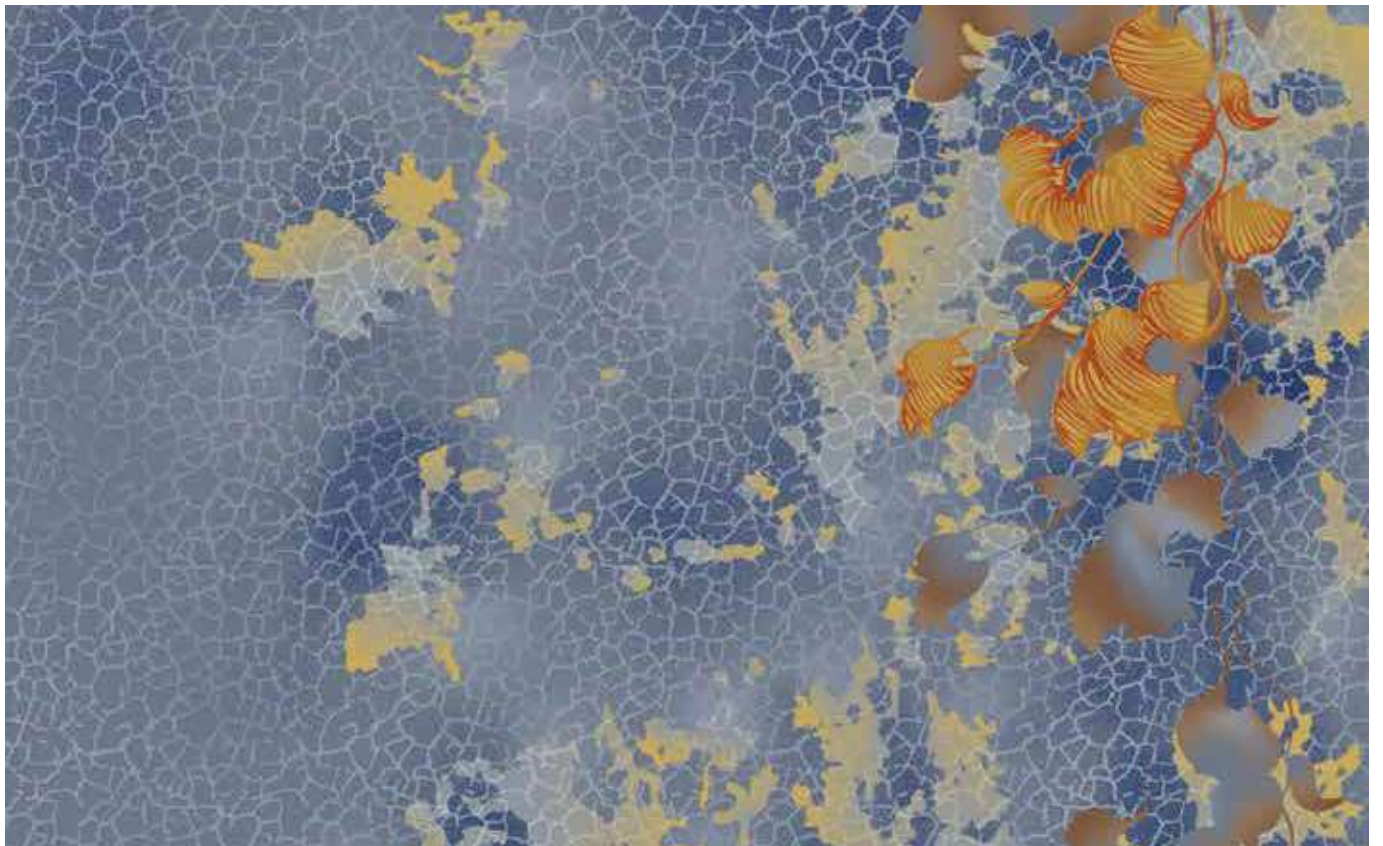


SH1182B1



# Floral

---



SH1385A-S16K



SH1385-S14L



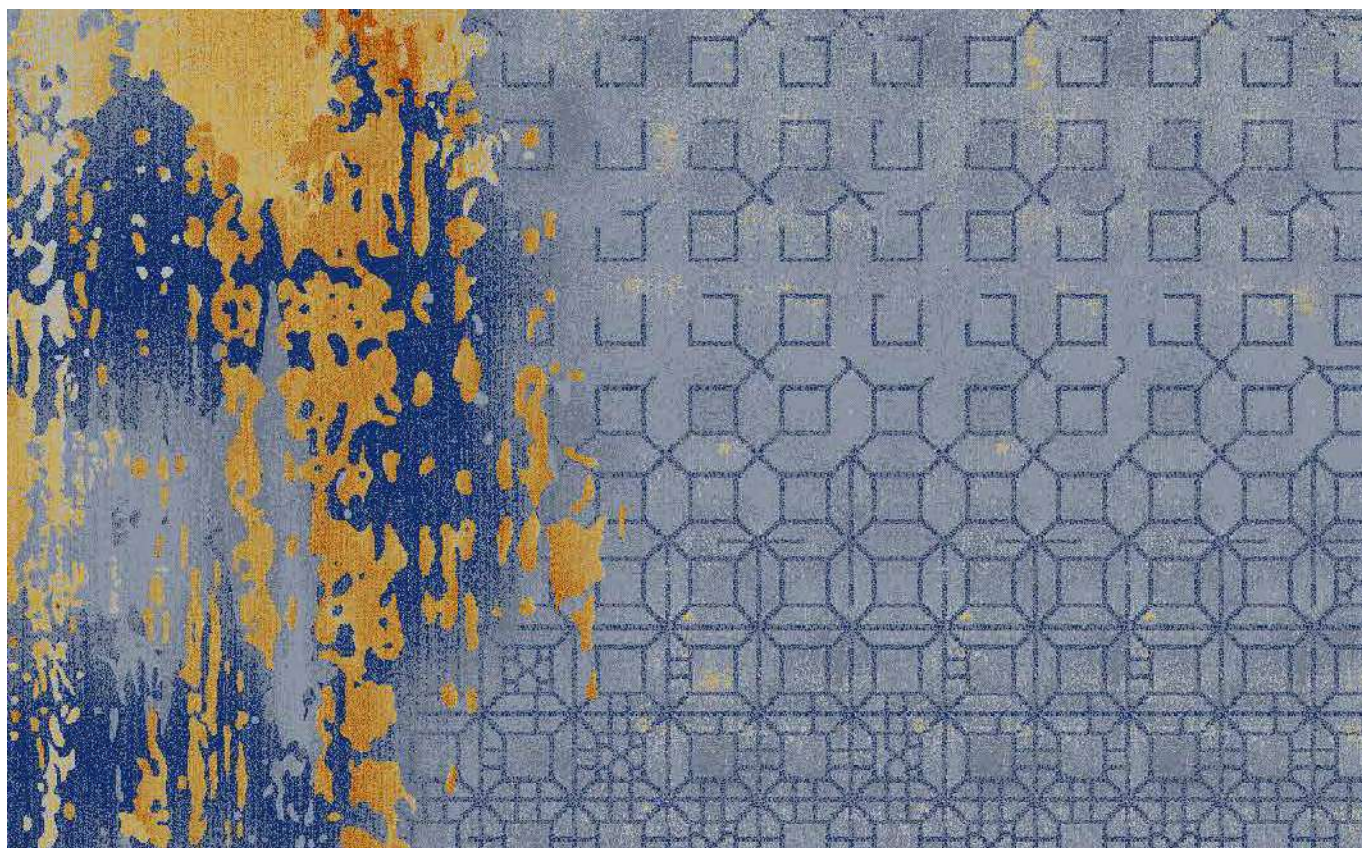


# Geometric

---



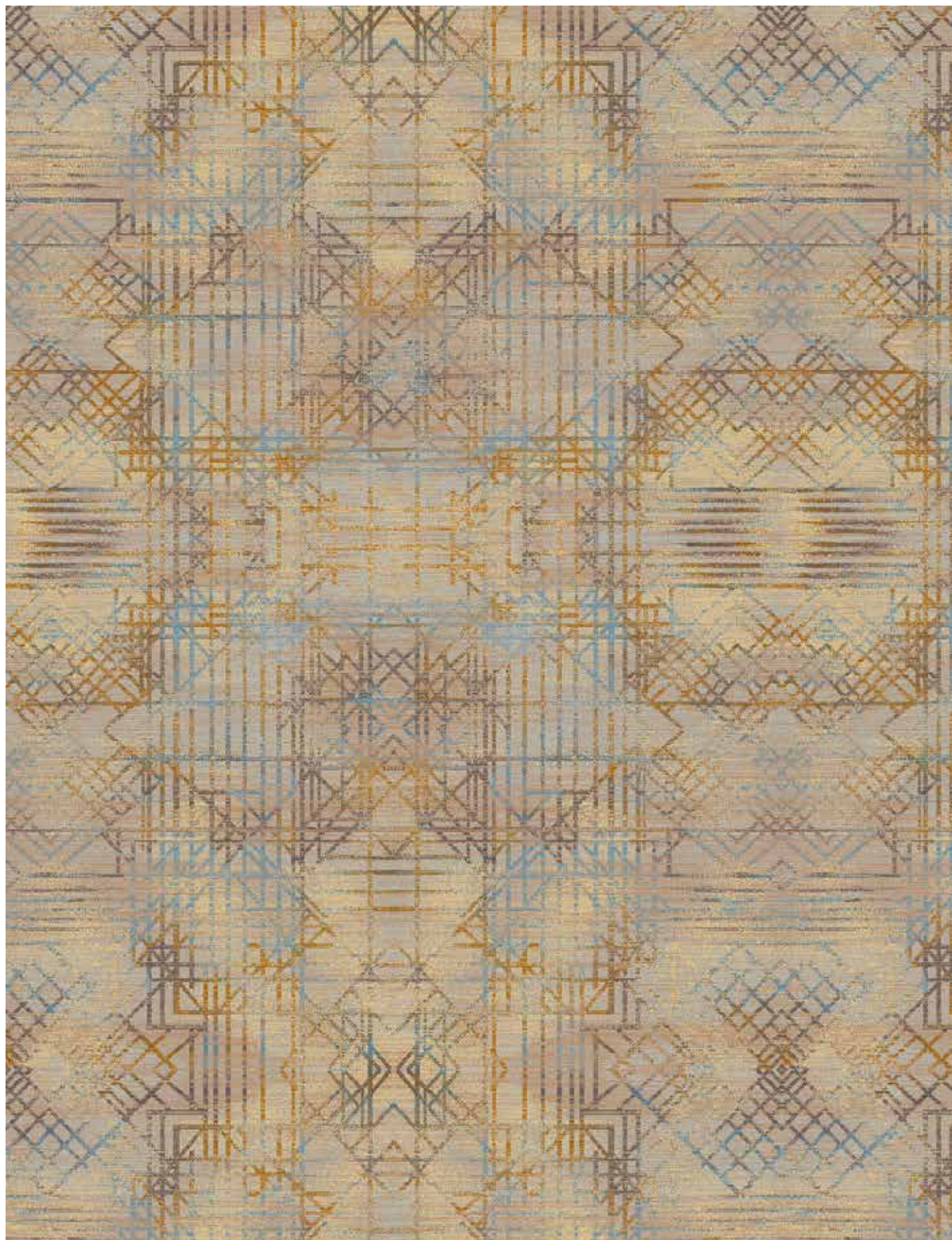
SH1348-S12E



SH1348-S704

# Geometric

---



SH1604A6

# Geometric

---



SH1177C1



SH1177



# Geometric

---



SH1325-S37M-1

# Geometric

---



SH1534A

# Geometric

---



SH1478-S29F



SH1478-S37L



SH1478A-G





# Geometric

---



SH1180



SH1180-S41B



# Geometric

---



SH1115A5



401-405  
2020

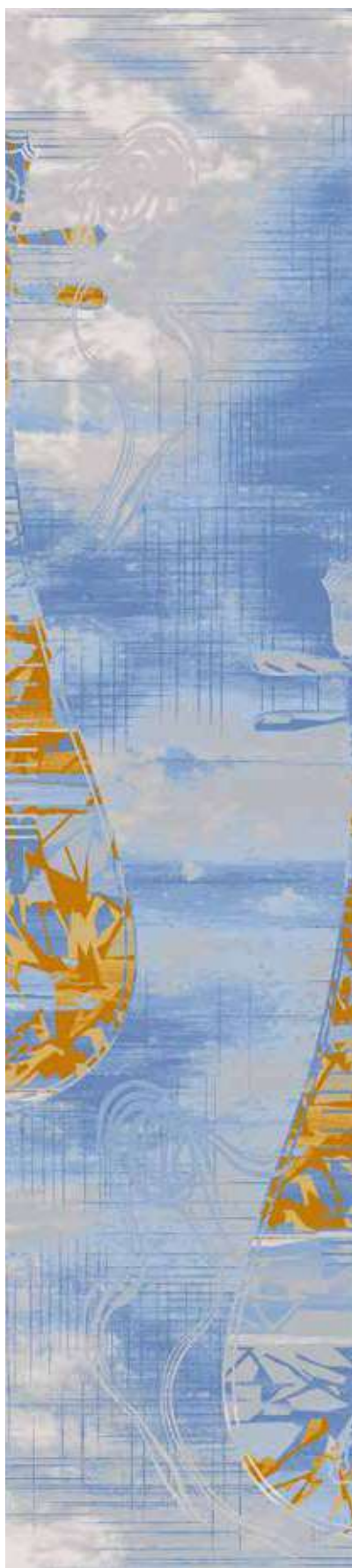
406-410  
2020

402

403

# Geometric

---



SH1868B8



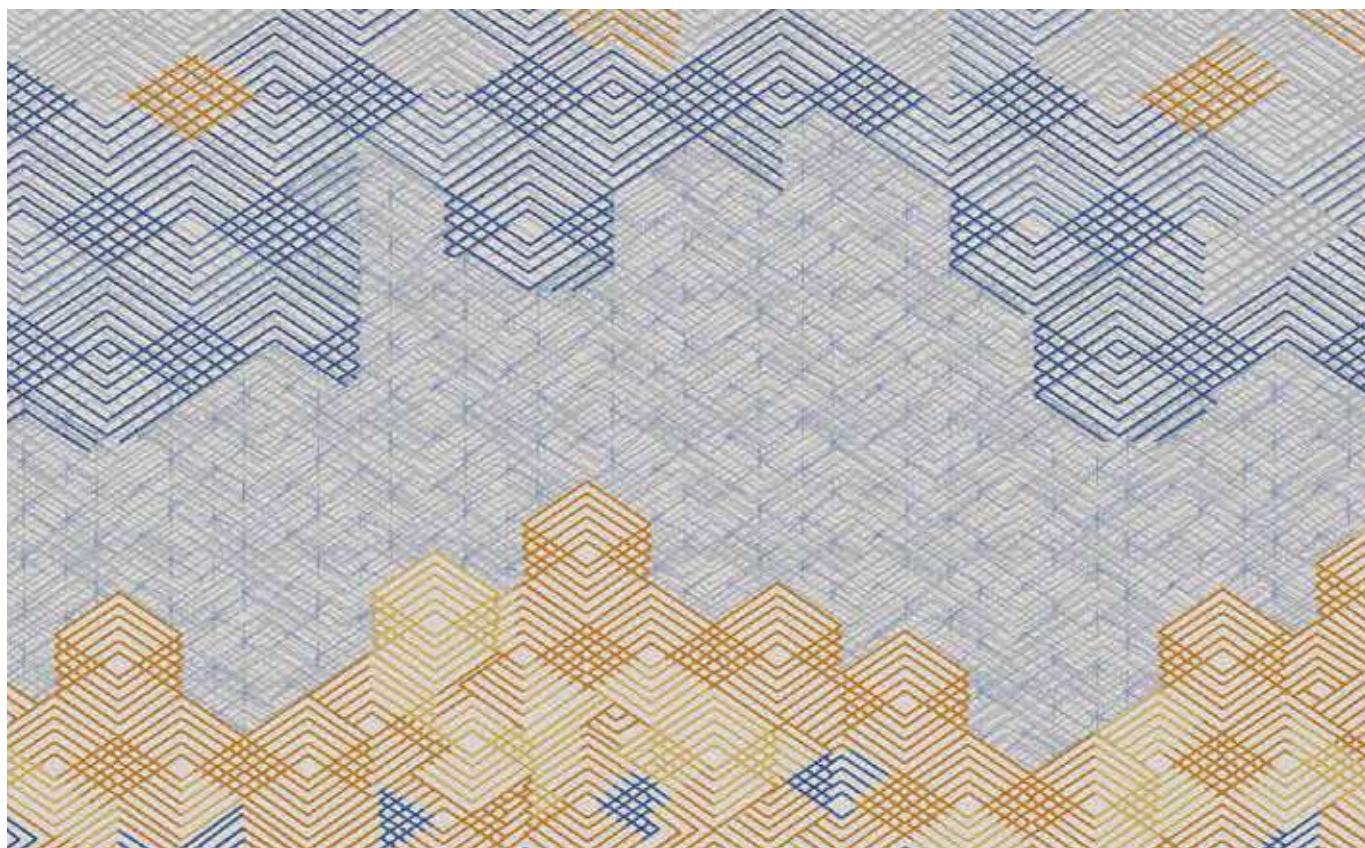
SH1868B11



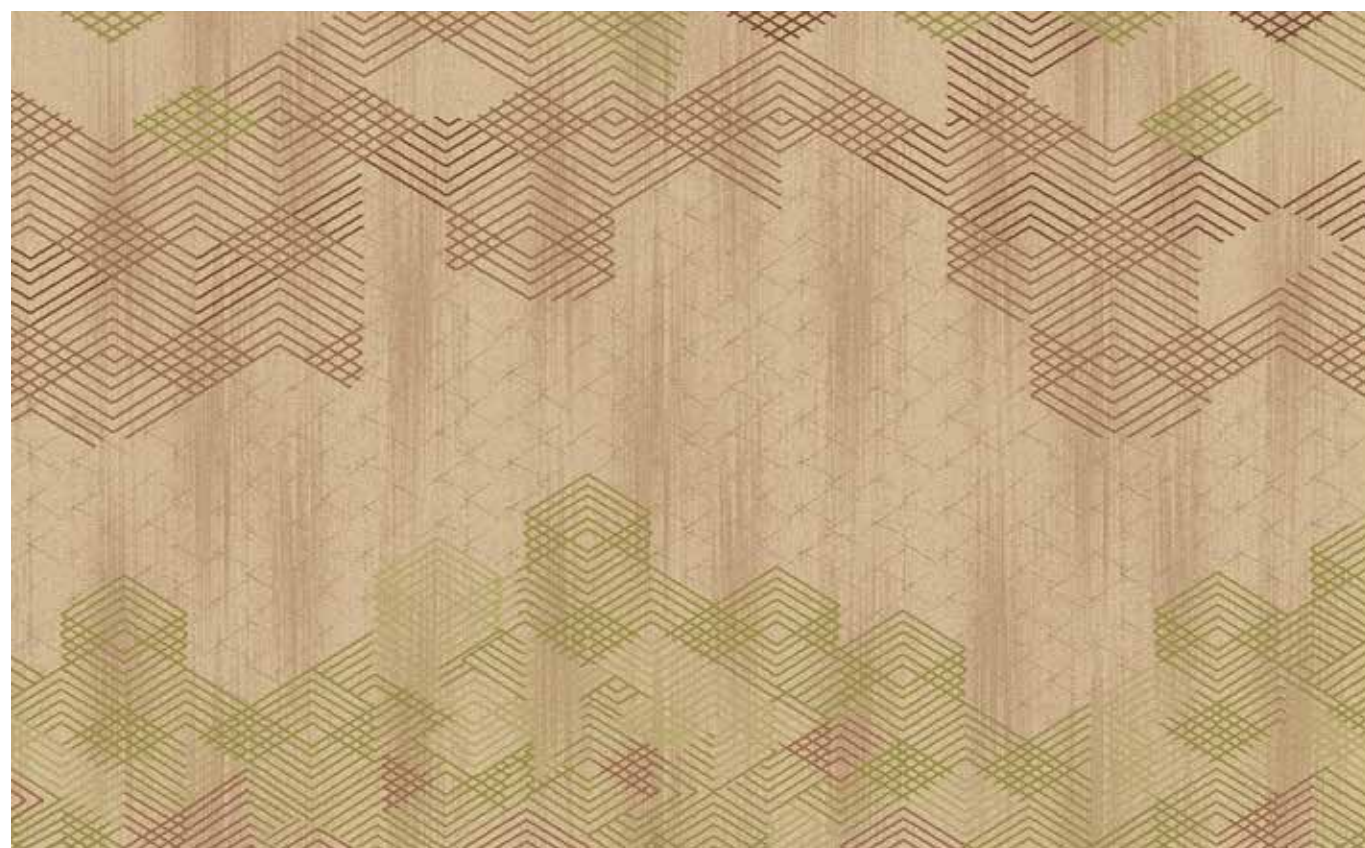
SH1868B10

# Geometric

---



SH1476-S713



SH1476A4

# Geometric

---



SH1600A





# Geometric

---



SH1326-S30G-1



SH1326-S10D 8



# Sphere

---



GGAX24-001

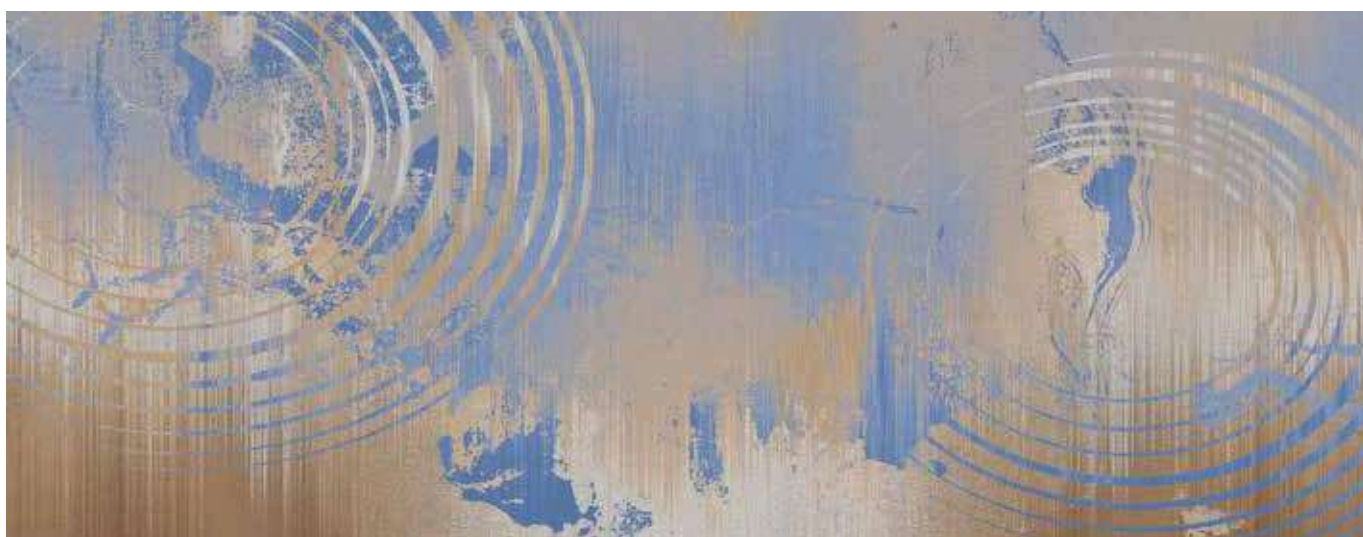


# Sphere

---



SH2171A10



SH2171A6

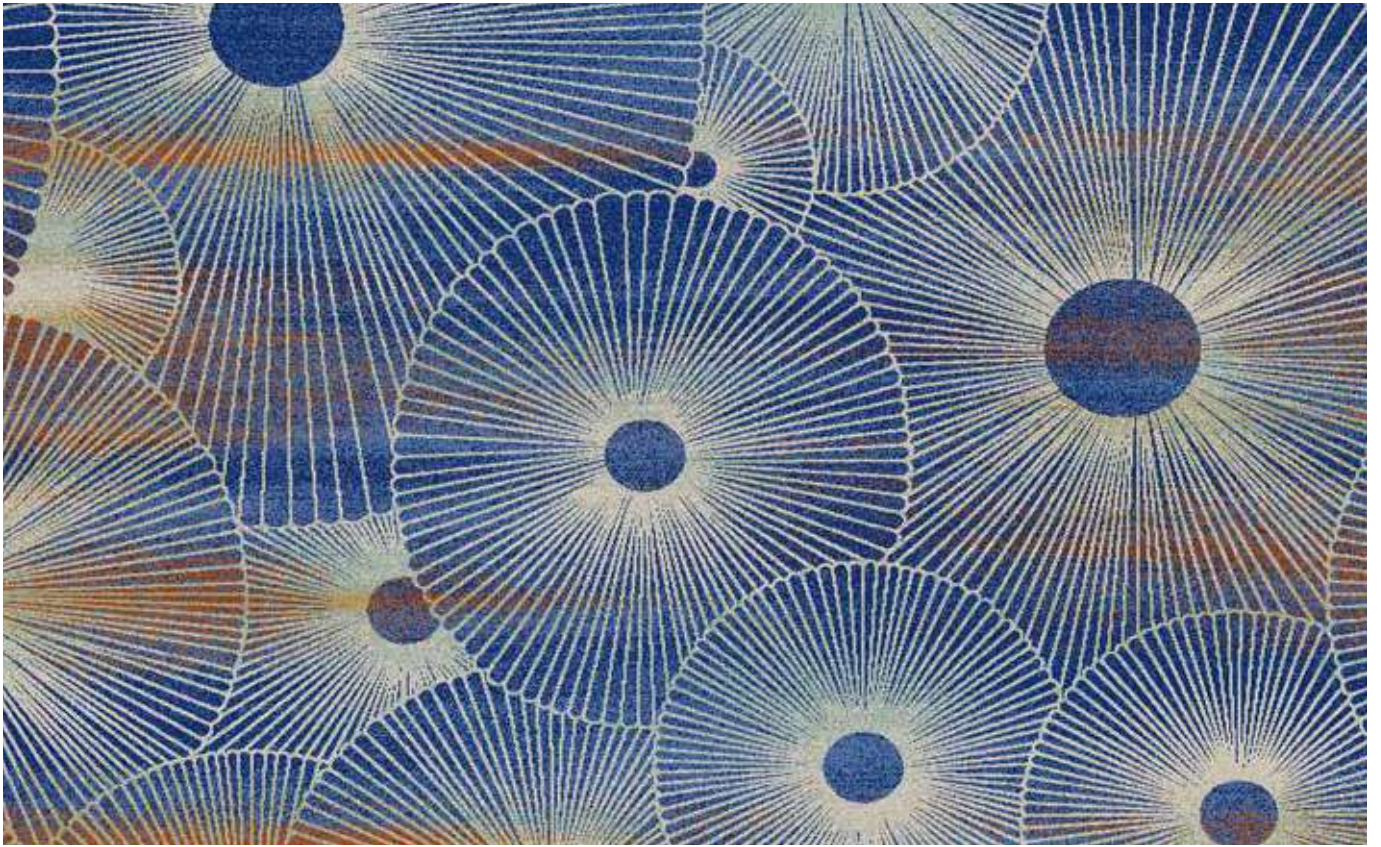


SH2171A1



# Sphere

---



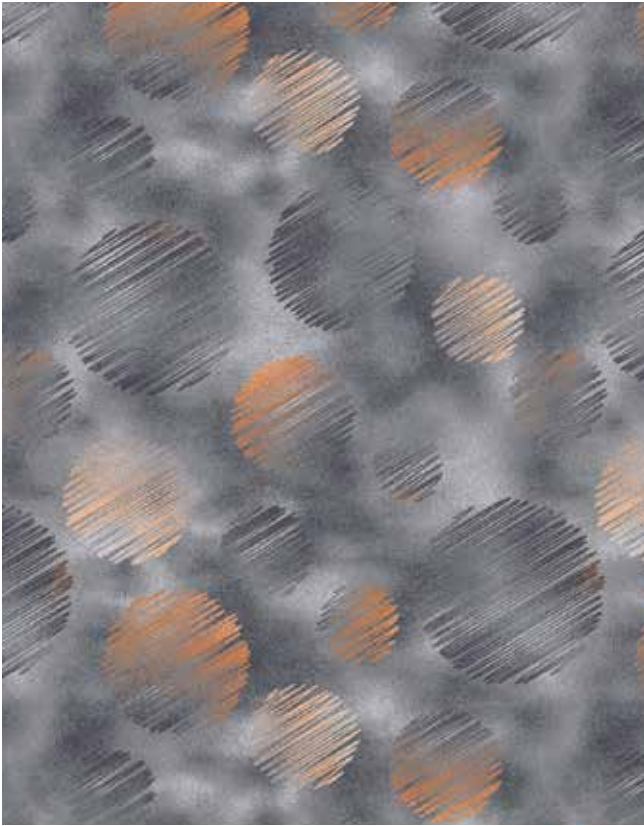
SH1324-S29P



SH1324-S22H

# Sphere

---



SH2160A6



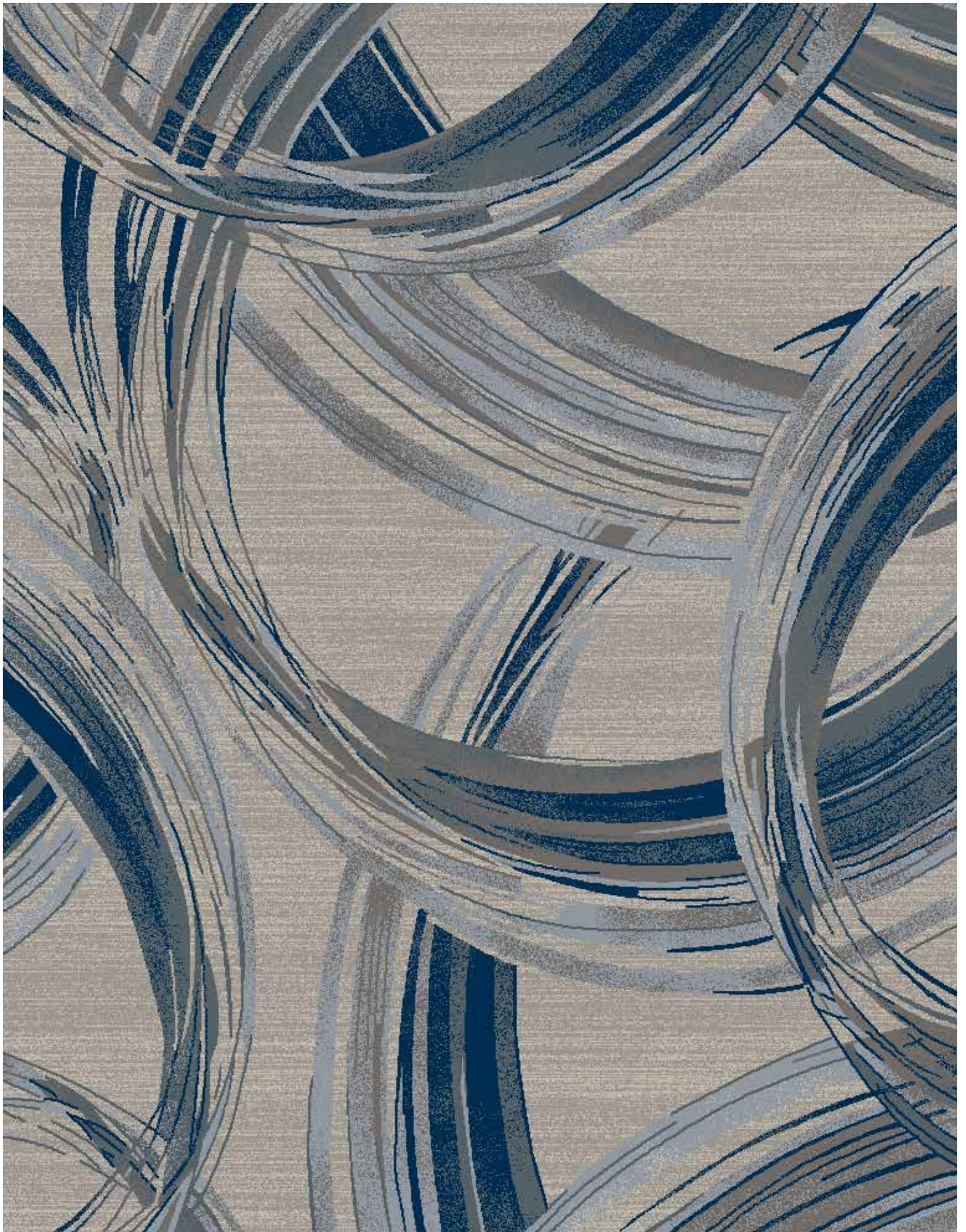
SH2160A8





# Sphere

---

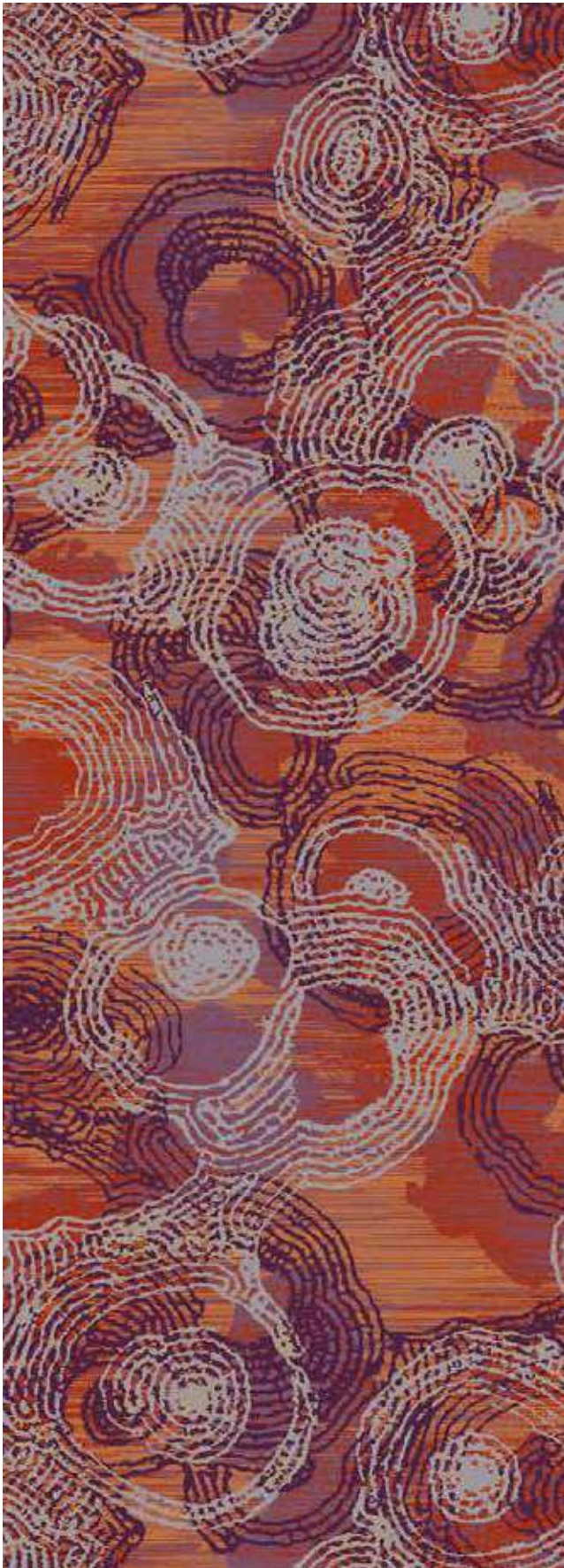


GY1890

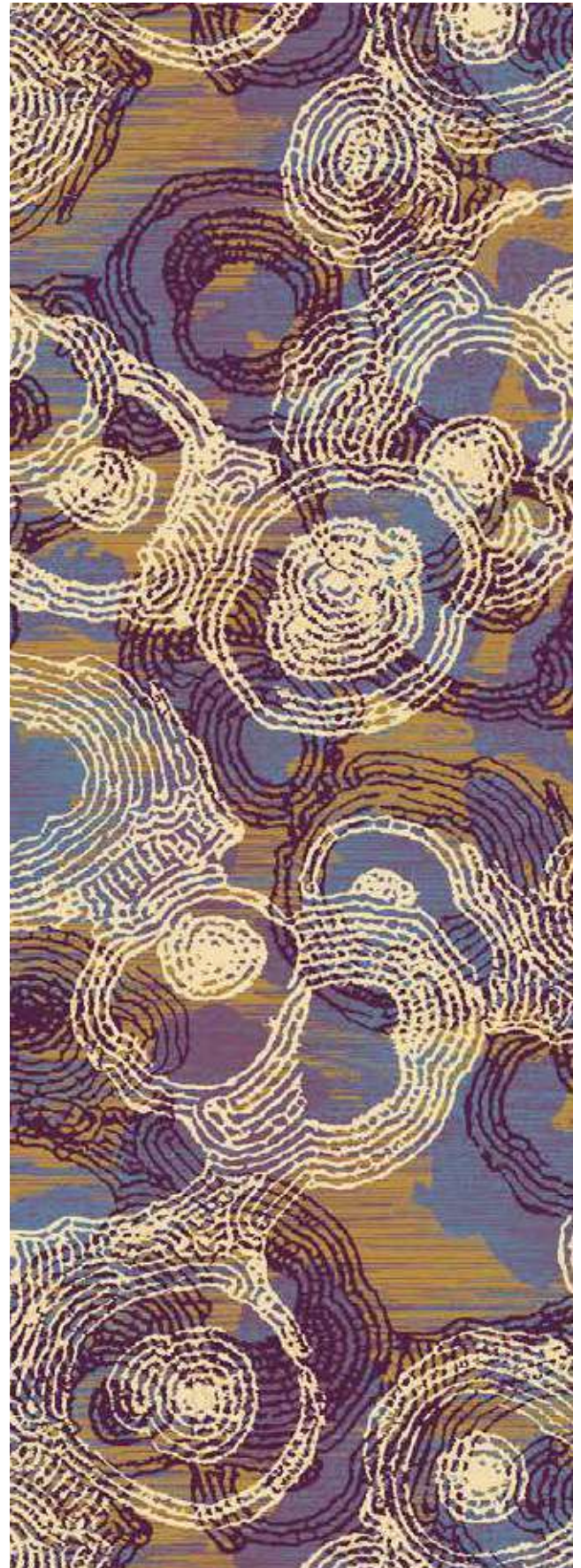


# Sphere

---



SH1466-S39C



SH1466-S27P



# Sphere

---



SH2146A7



SH2146A1



# Sphere

---



HT24-036A



HT24-036B

# Sphere

---



SH2169A4



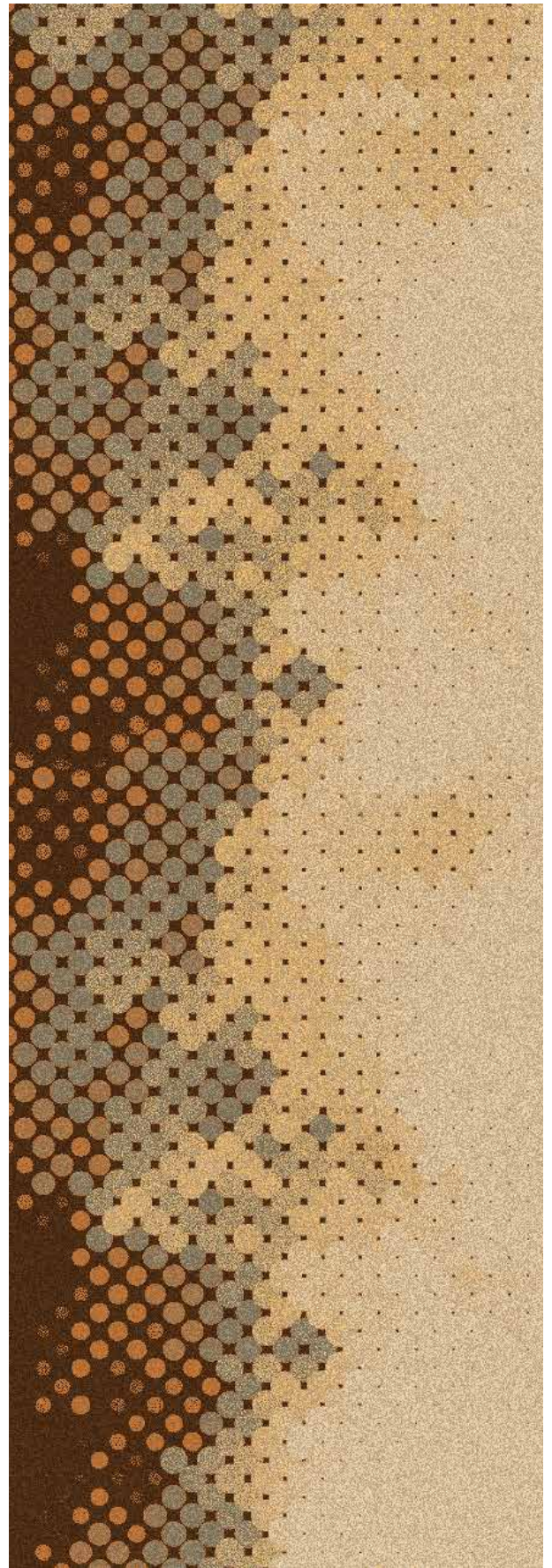
SH2169A10





# Sphere

---



GGAX24-002



# Stroke

---



SH0995-33C



SH0995-34D



SH0995-5B



# Stroke

---



SH1597A

# Stroke

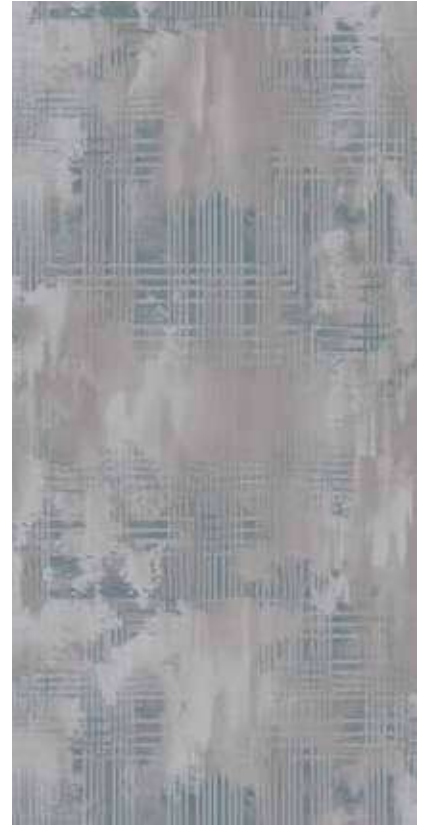
---



SH2151A1



SH2151



SH2151A2



# Stroke

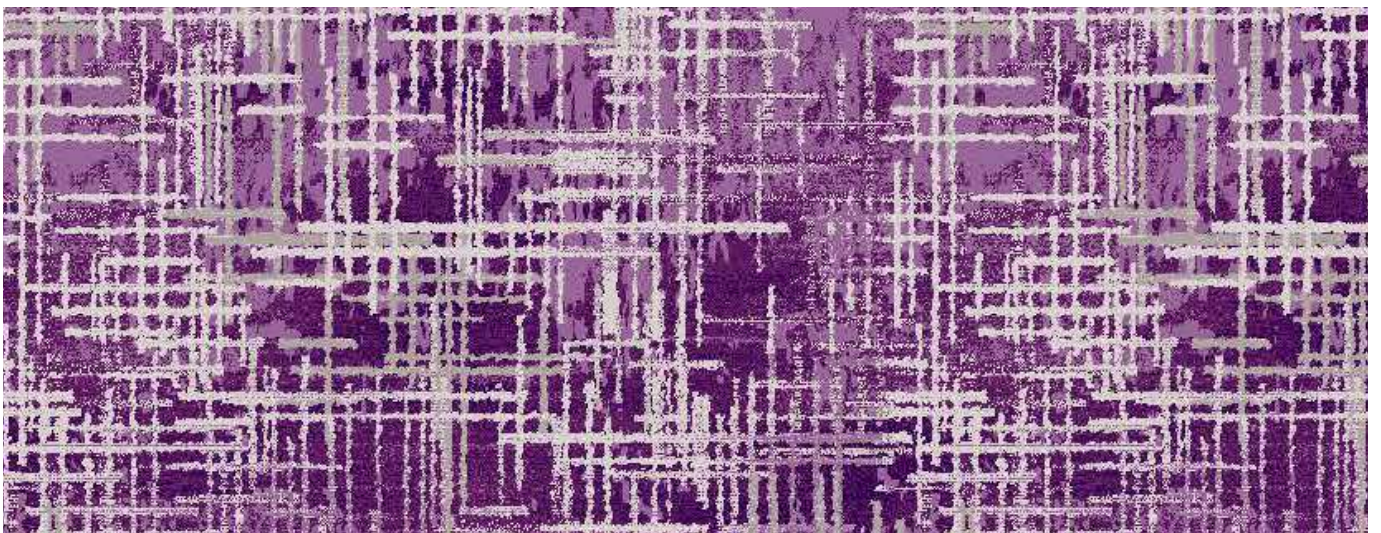
---



SH0996-4B



SH0996-4BD



SH0996-4B-C





# Stroke

---



SH0919-S17P



SH0919-34D



SH0919-5B



# Stroke

---



SH2150A1



SH2150A2



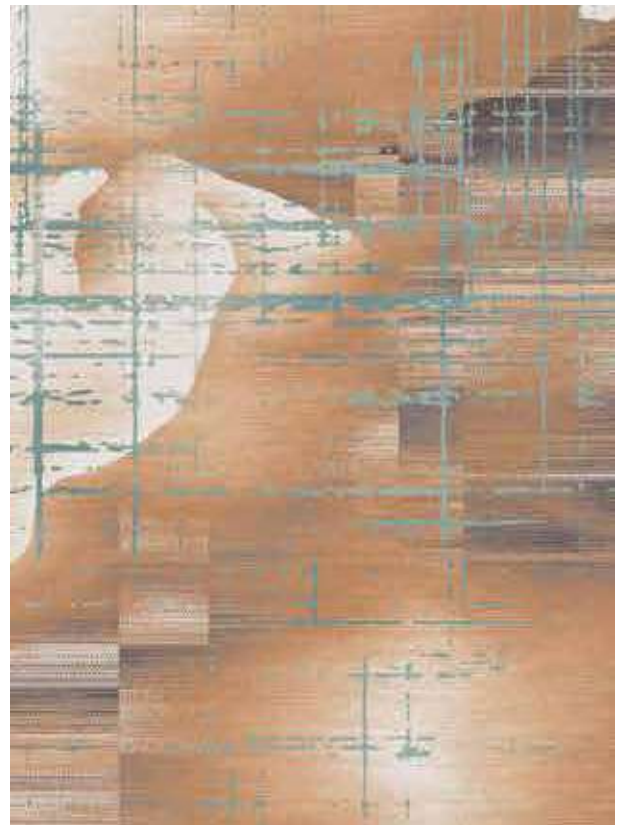
SH2150A

# Stroke

---



SH2149A3



SH2149A6

# Stroke

---



SH0999-24C



SH0999-33C



# Stroke

---



SH2162A32



SH2162A25

# Stroke

---



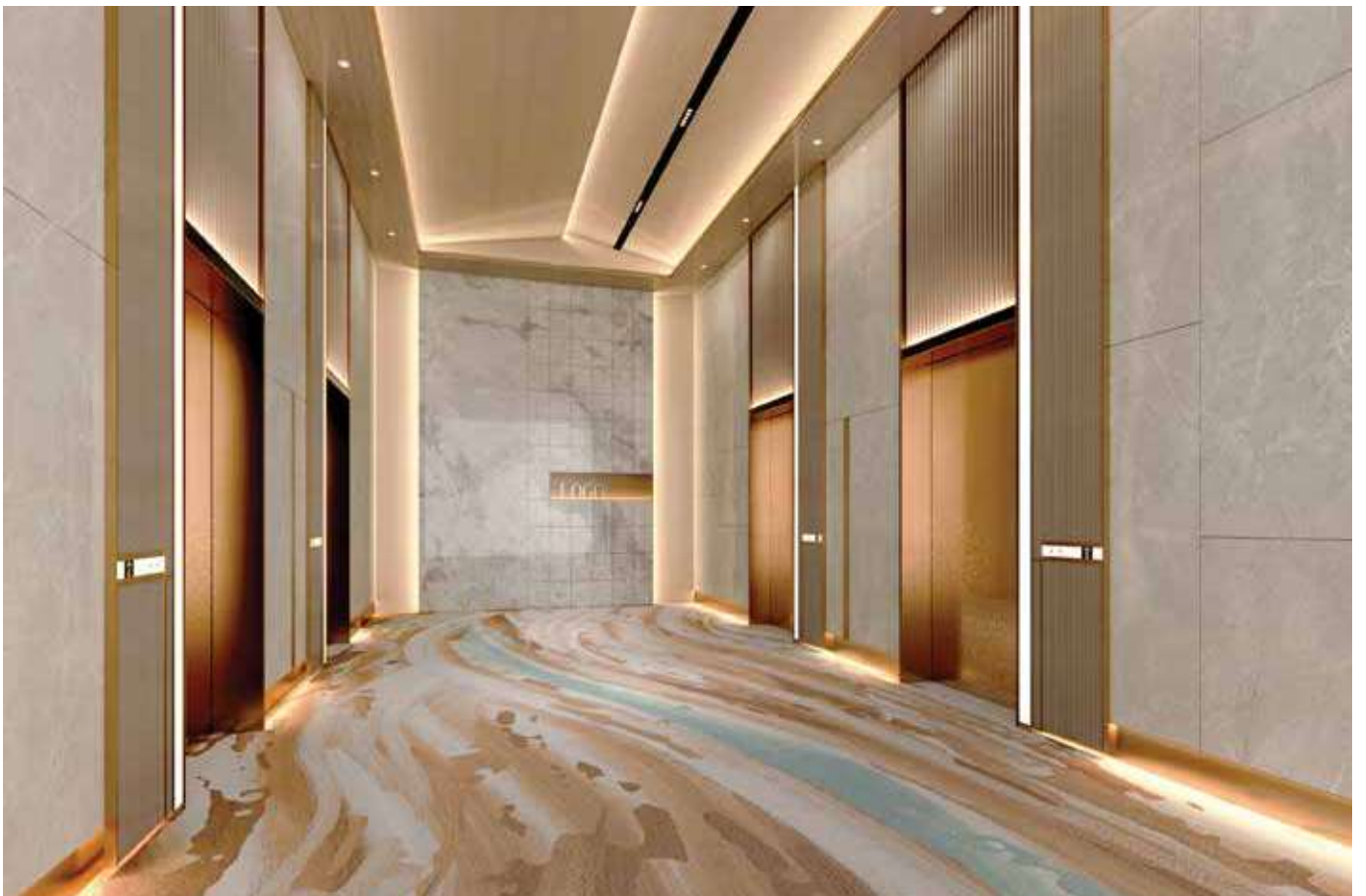
SH1864B13



SH1864B10



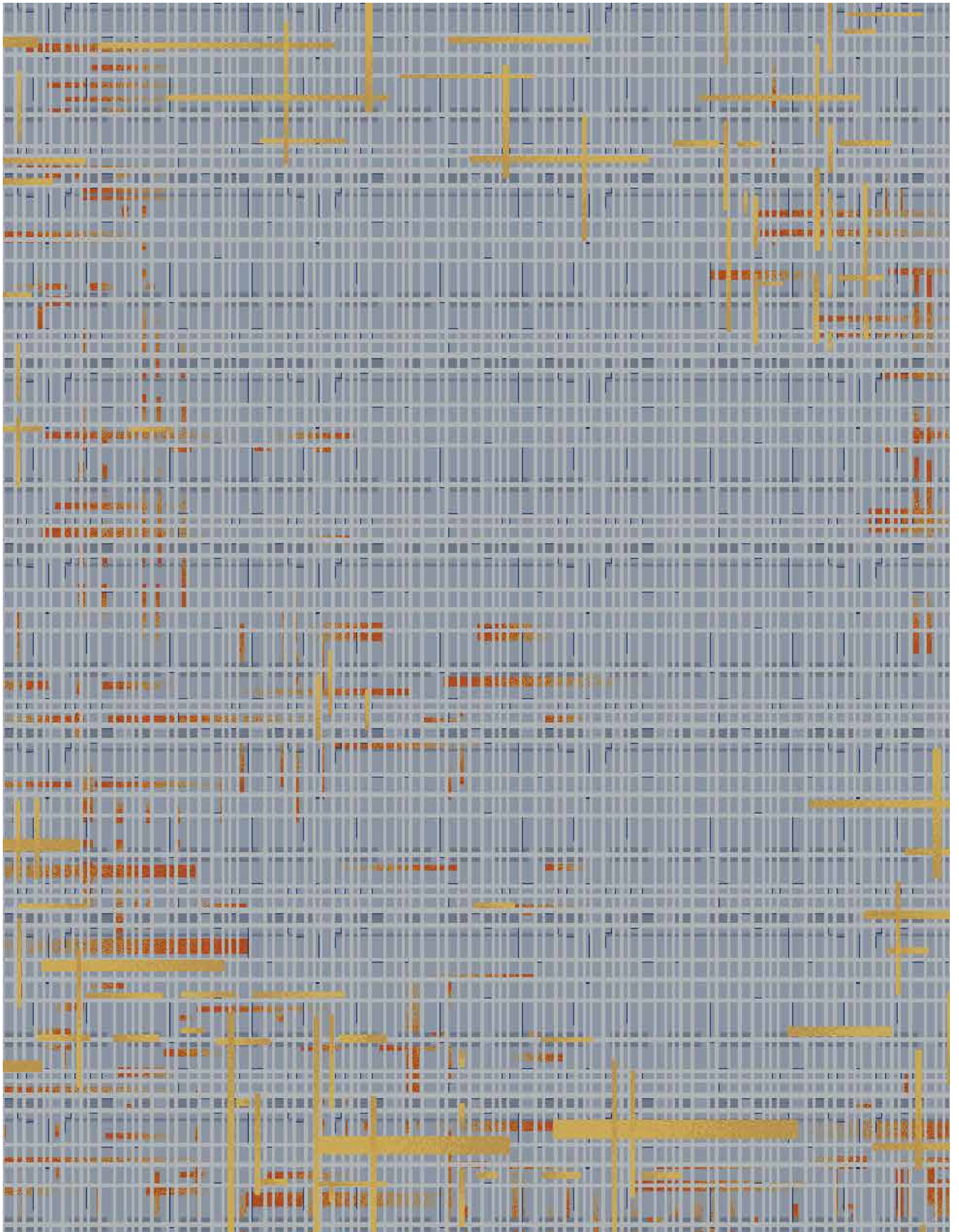
SH1864B11





# Stroke

---

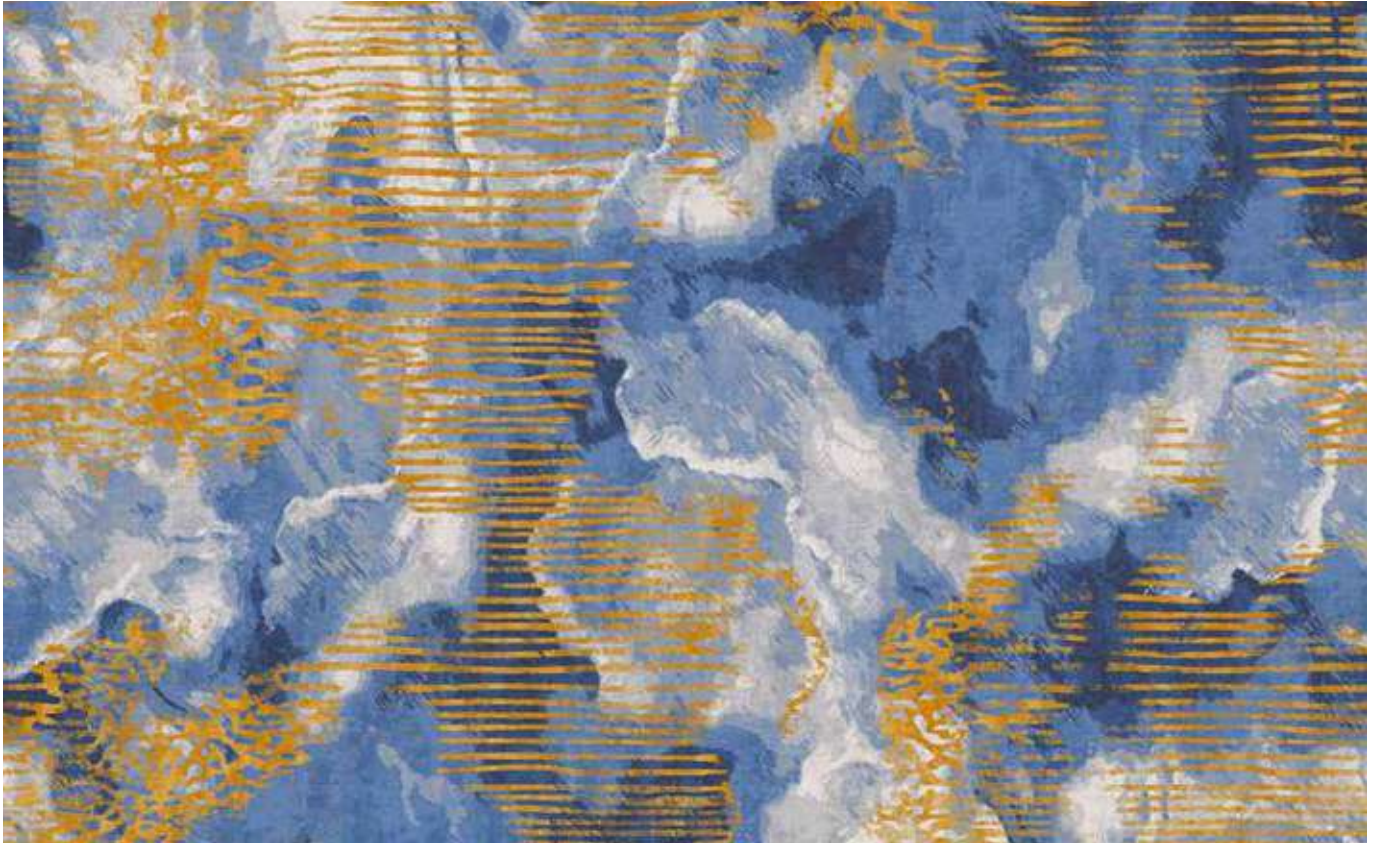


SH1346-S704



# Stroke

---



SH2145A2



SH2145A4

# Stroke

---



SH2156A1



SH2156A4



SH2156A3

# Stroke

---



SH2147A8



SH2147A4



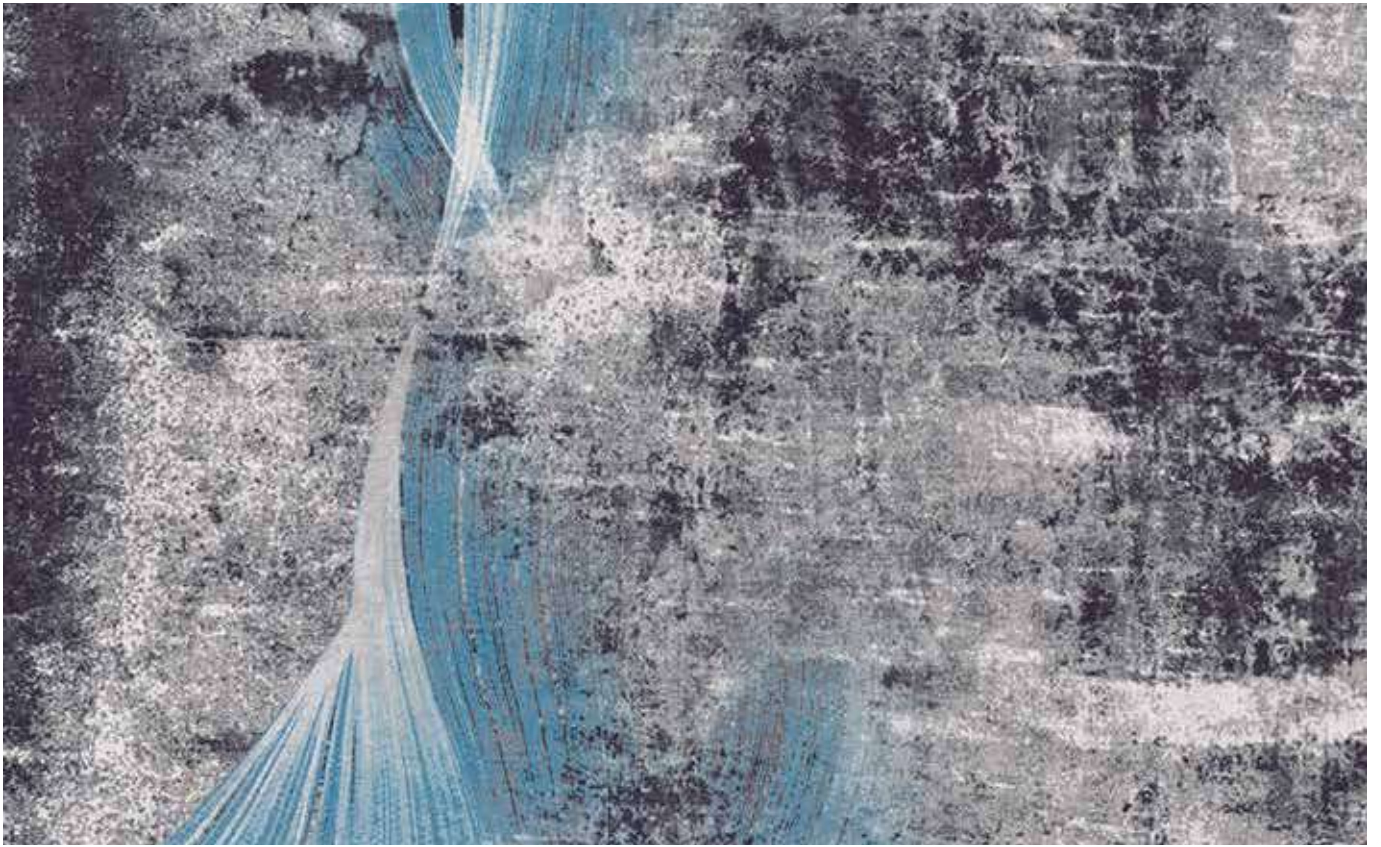
SH2147A2





# Stroke

---



SH2144A1



SH2144A3



AV room



# Abstract

---



SH1867B4



SH1867B10



# Abstract

---



SH1178B



# Abstract

---



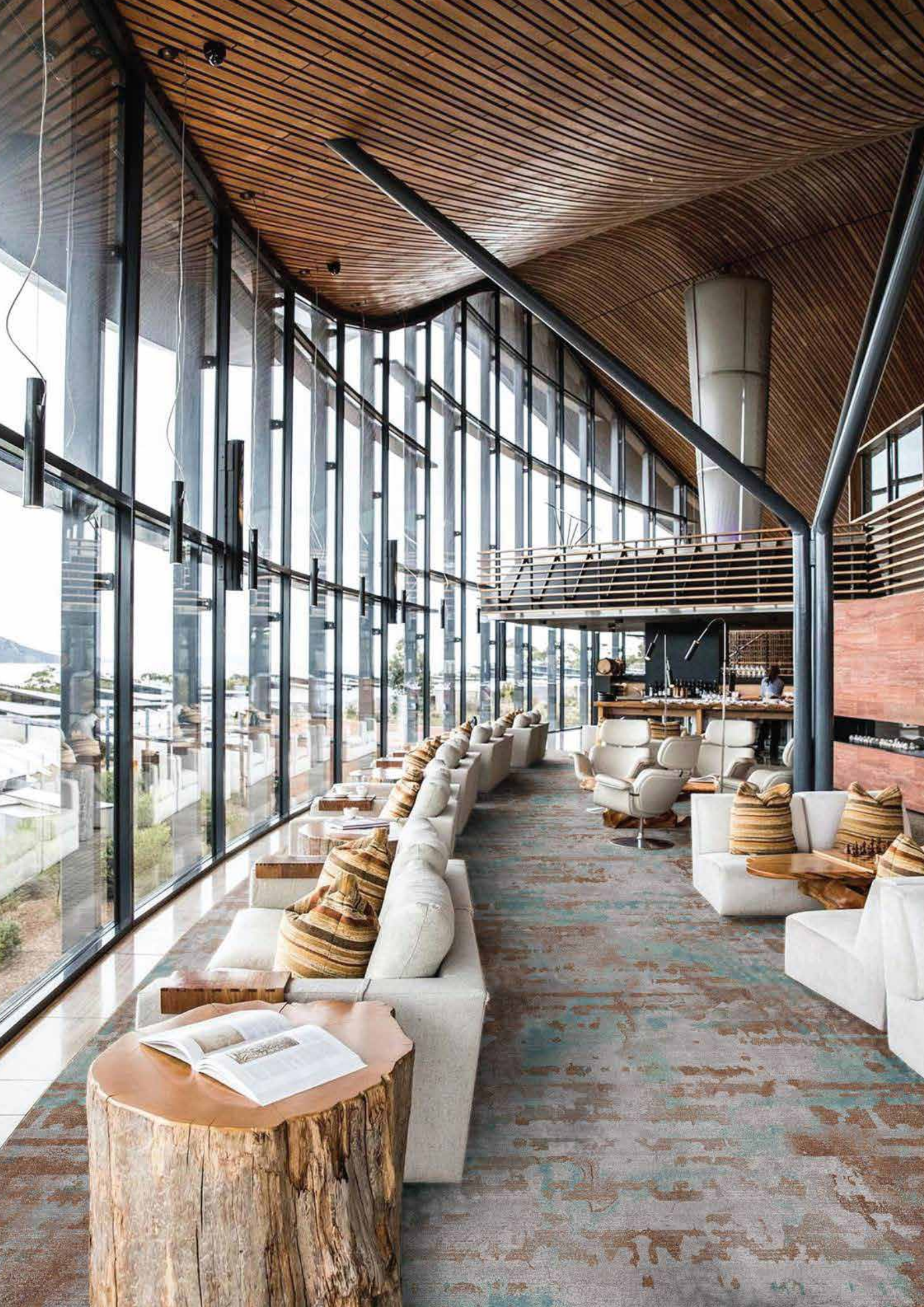
SH2152A1



SH2152A



SH2152



# Abstract

---



SH2143A3



SH2143A7



SH2143A5

# Abstract

---



SH2170A2



SH2170A1



# Abstract

---



SH1160A

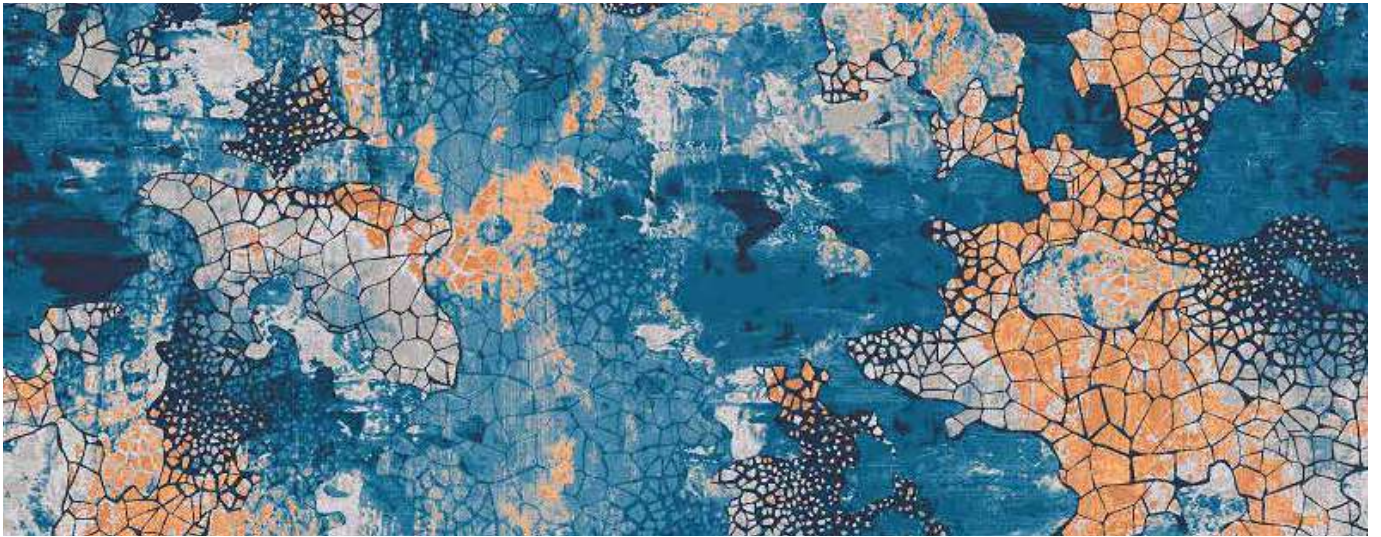


SH1160

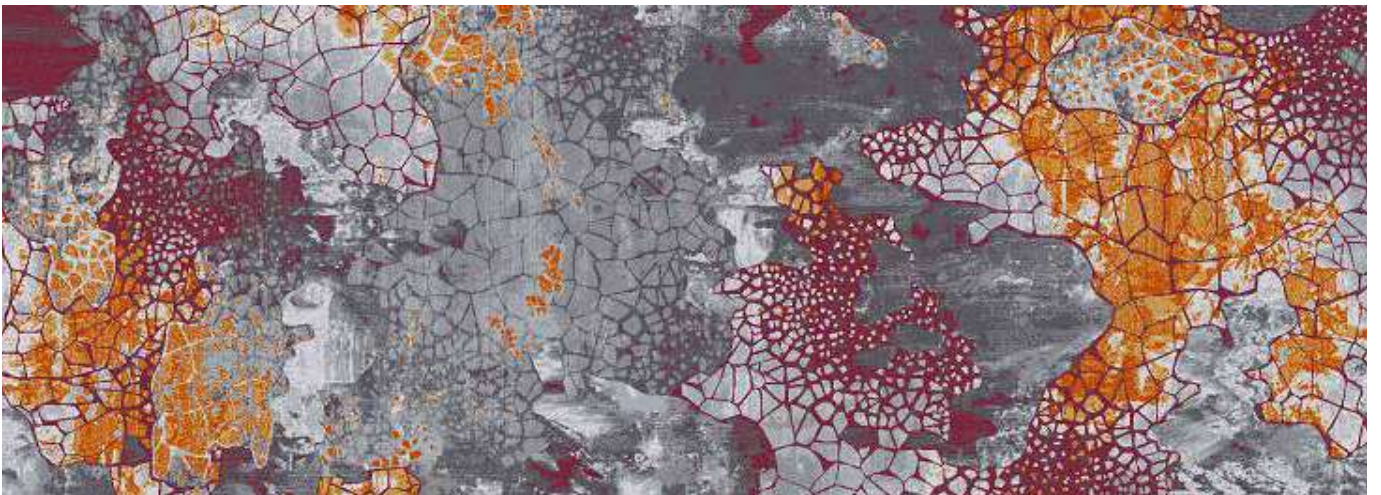


# Abstract

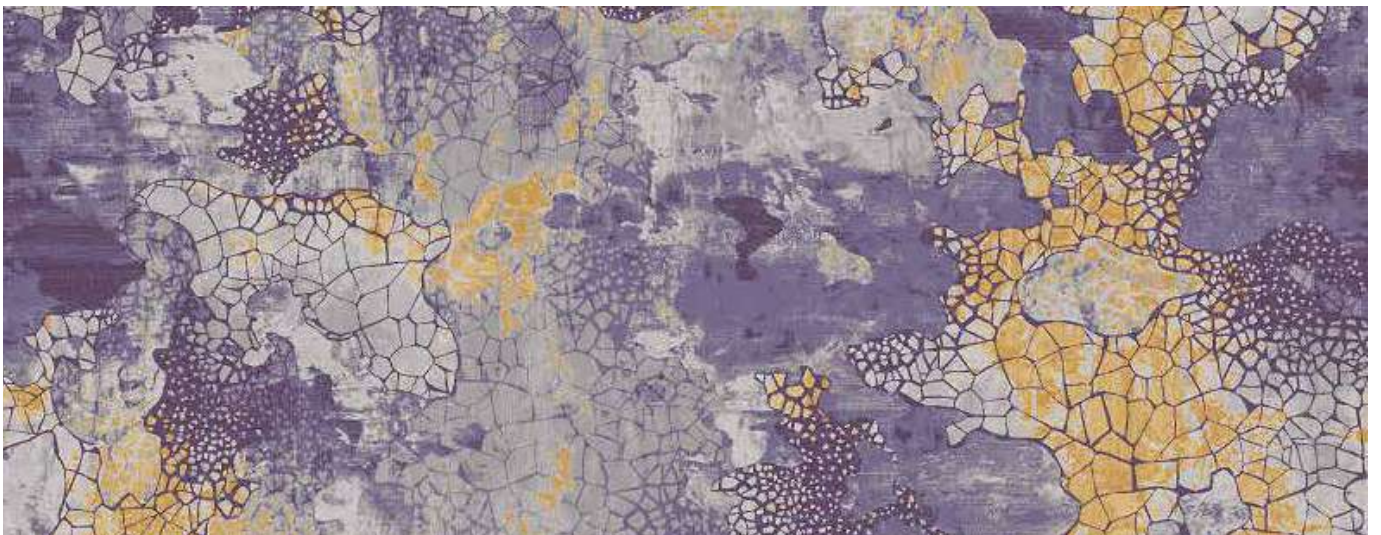
---



SH1866B15



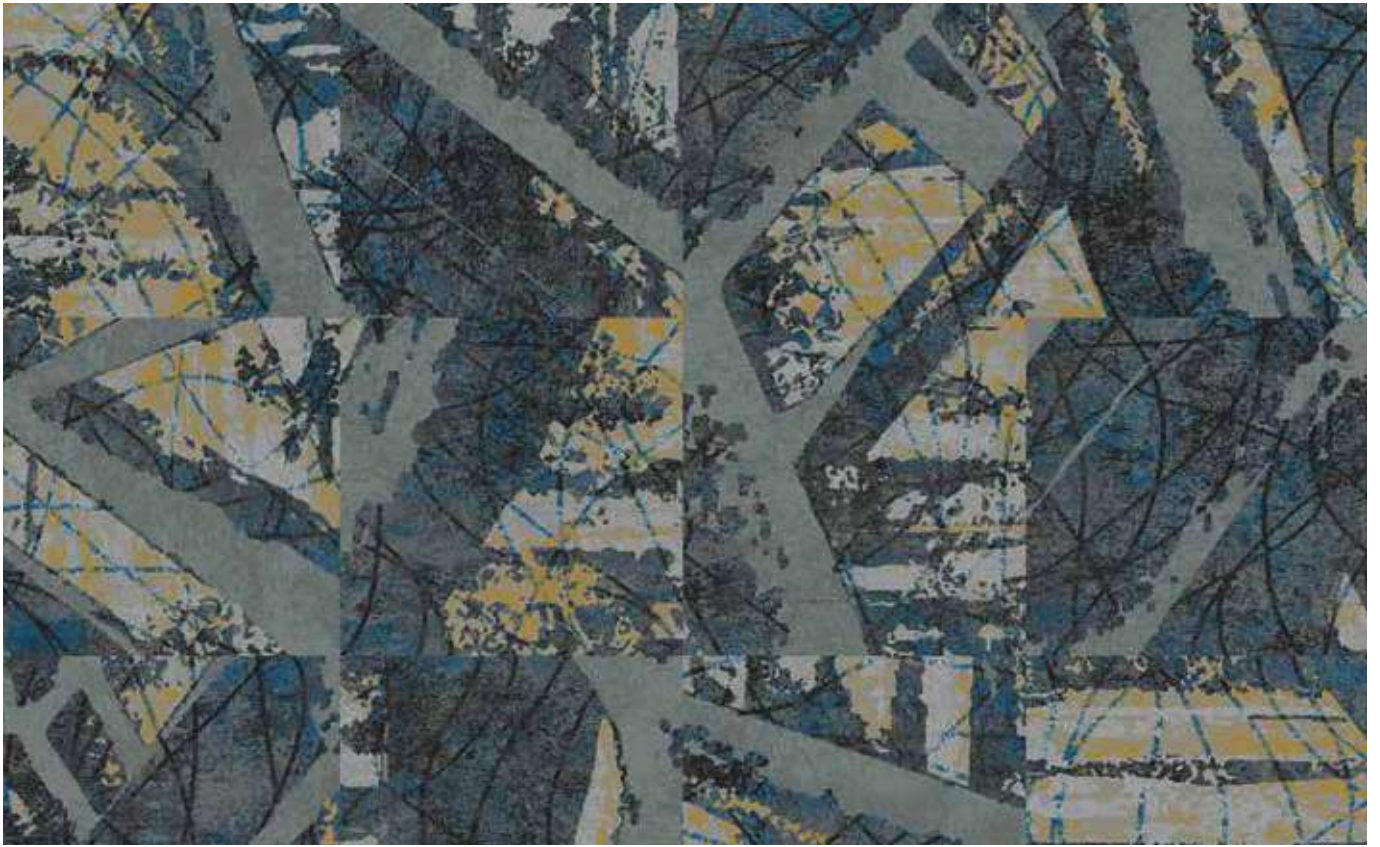
SH1866B11



SH1866B19

# Abstract

---



QW2423B2



QW2423B5

# Abstract

---



SH2148A7



SH2148A3



SH2148A5



# Abstract

---



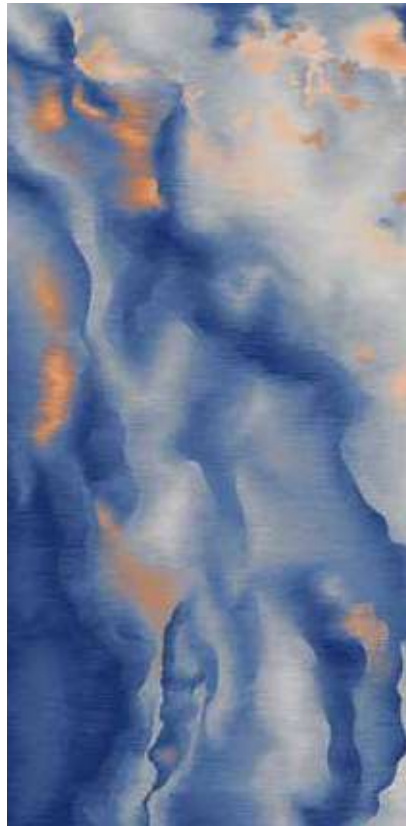
HT24-035

# Abstract

---



SH2161A9



SH2161A3



SH2161A2





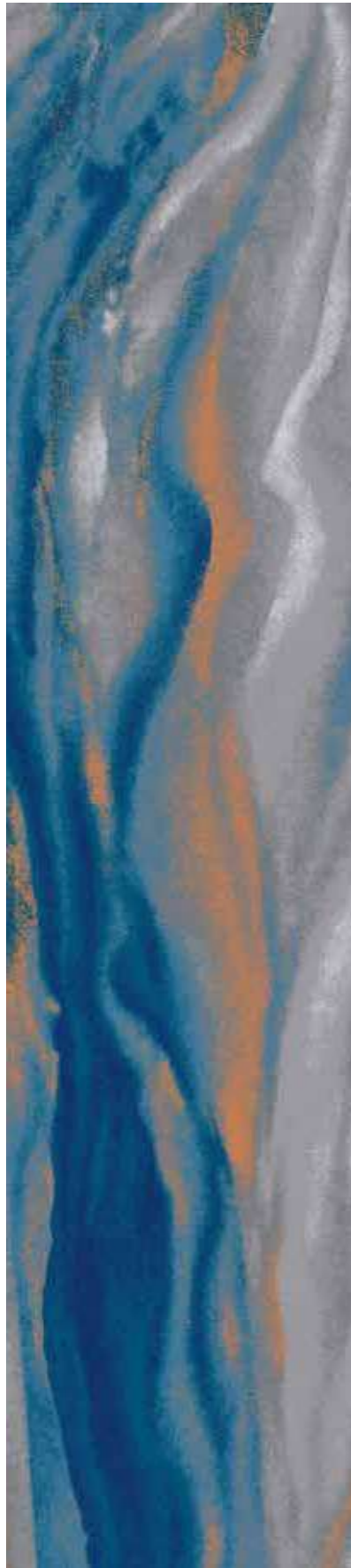


# Abstract

---



SH2157B9



SH2157B10



SH2157B17

# Abstract

---



SH2168A17



SH2168A7



# Abstract

---



SH1177D1



**Stay Connected**

[www.goodrichglobal.com](http://www.goodrichglobal.com) | [info@goodrichglobal.com](mailto:info@goodrichglobal.com)

 [/goodrich\\_global](https://www.instagram.com/goodrich_global)

 [/goodrichglobal](https://www.pinterest.com/goodrichglobal)

 [/Goodrich.Global.Singapore](https://www.facebook.com/Goodrich.Global.Singapore)

 [/Goodrich.Global](https://www.linkedin.com/company/Goodrich.Global)

 [/goodrichglobal](https://www.tiktok.com/goodrichglobal)

 [/GoodrichGlobalOfficial](https://www.youtube.com/GoodrichGlobalOfficial)