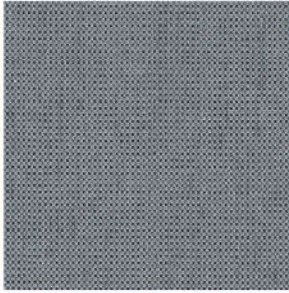




FIRST CLASS

XTRA PERFORMANCE SURFACES



More Colors



Contents:	100% XPE
Use:	Panels, Wallcoverings
Alternate Uses:	Panels, Upholstery
Width:	54"/141" Trimmed (137cm/290cm) ▶ - 2.9m±3% width available
Warranty:	Free of defects in workmanship and material for 10 years
Repeat:	Random Match
Packaging:	30 Yard Bolts
Backing:	Paper Backing
Available Backings:	Non Woven Backing
Durability:	No wear 1,000,000 Double Rubs
Cleaning Codes:	W5+BC-Water/Solvent + Bleach Cleanable
Flame Retardancy:	ASTM E84 CLASS A / CE
ECO Info:	PVC Free, Anti Bacterial, Responsible Return Program Extremely low VOCs, antibacterial, safely disposable Free of cadmium, mercury and ozone depleting chemicals
Notes:	Cut charge applies to orders under 50 yards
Other Options:	Options Available on a Minimum Yardage Basis: Custom color and design Embroidery, Emboss, Protective backing
ACT Symbols:	♻️ ♻️ ♻️ ♻️ ♻️

Wallcoverings · Panels · Upholstery



906-1613
▶ Width: 137CM

906-1674
▶ Width: 137CM

906-1564
▶ Width: 137CM

906-1685
Width: 137CM

906-1697
Width: 137CM

906-1158
▶ Width: 137CM



906-1381
▶ Width: 137CM

906-1530
▶ Width: 137CM

906-1693
▶ Width: 137CM

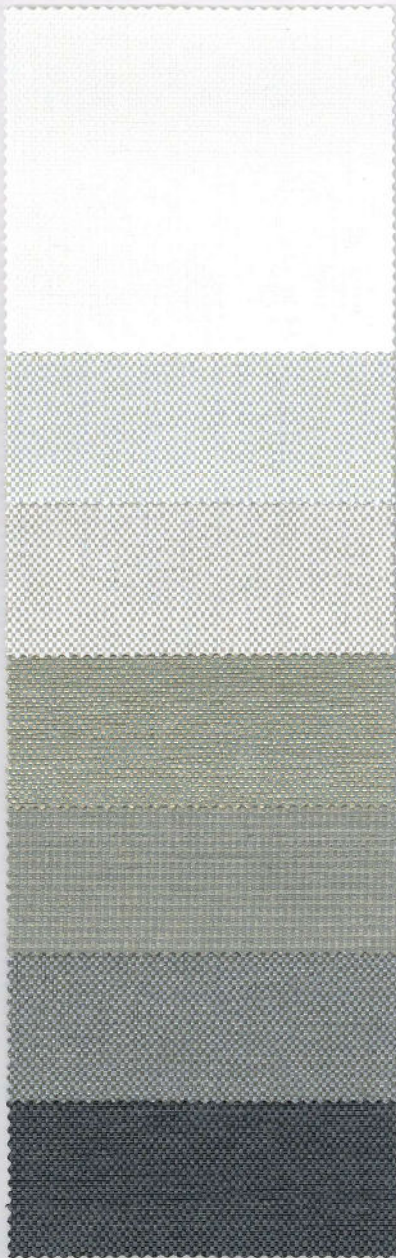
906-1125
▶ Width: 137CM

906-1388
▶ Width: 137CM

906-1236
▶ Width: 137CM

906-5006
Width: 137CM

Wallcoverings · Panels · Upholstery



906-1013
▶ Width: 137CM

906-5001
Width: 137CM

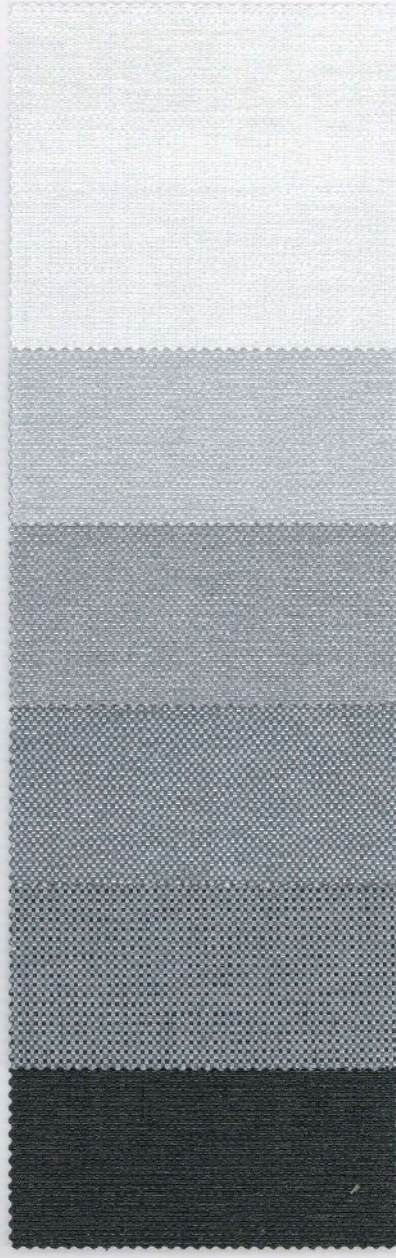
906-1692
Width: 137CM

906-1687
Width: 137CM

906-1695
Width: 137CM

906-1229
Width: 137CM

906-1339
▶ Width: 137CM



906-1189
▶ Width: 137CM

906-1377
▶ Width: 137CM

906-1404
Width: 137CM

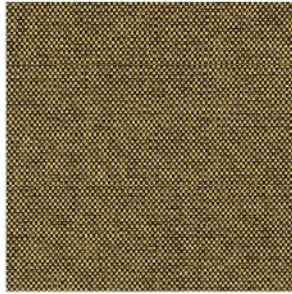
906-1676
Width: 137CM

906-1694
Width: 137CM

906-1196
Width: 137CM



► XPE , Discover a wide variety of high-performance fabrics for every contract market category.

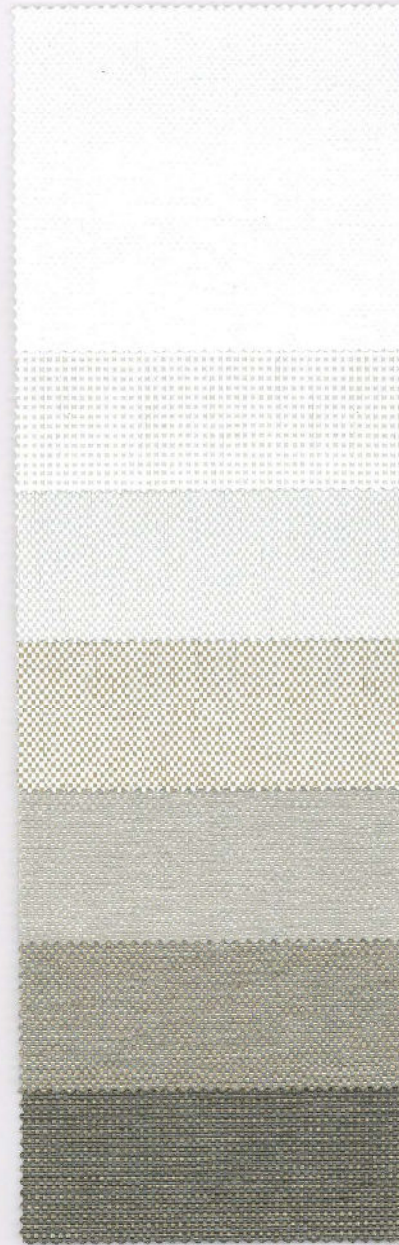


More Colors



Contents:	100% XPE
Use:	Panels, Wallcoverings
Alternate Uses:	Panels, Upholstery
Width:	54"/114" Trimmed (137cm/290cm) ▶ = 2.9m±3% width available
Warranty:	Free of defects in workmanship and material for 10 years
Repeat:	Random Match
Packaging:	30 Yard Bolts
Backing:	Paper Backing
Available Backings:	Non Woven Backing
Durability:	No wear 1,000,000 Double Rubs
Cleaning Codes:	WS+BC-Water/Solvent + Bleach Cleanable
Flame Retardancy:	ASTM E84 CLASS A / C€
ECO Info:	PVC Free, Anti Bacterial, Responsible Return Program Extremely low VOCs, antibacterial, safely disposable Fros of cadmium, mercury and ozone depleting chemicals
Notes:	Cut charge applies to orders under 50 yards
Other Options:	Options Available on a Minimum Yardage Basis: Custom color and design Embroidery, Emboss, Protective backing
ACT Symbols:	♻️ ♻️ ♻️ ♻️ ♻️

Wallcoverings · Panels · Upholstery



906-1678
▶ Width: 137CM

906-1542
Width: 137CM

906-1677
▶ Width: 137CM

906-1680
Width: 137CM

906-1801
▶ Width: 137CM

906-1127
Width: 137CM

906-1696
Width: 137CM



906-1689
Width: 137CM

906-1675
Width: 137CM

906-1690
Width: 137CM

906-1603
Width: 137CM

906-1562
Width: 137CM

906-1141
Width: 137CM

906-5011
Width: 137CM

Wallcoverings · Panels · Upholstery



906-1390
Width: 137CM

906-1384
Width: 137CM

906-1551
Width: 137CM

906-1682
Width: 137CM

906-5005
Width: 137CM

906-1800
Width: 137CM

906-1804
Width: 137CM



906-1407
Width: 137CM

906-1555
Width: 137CM

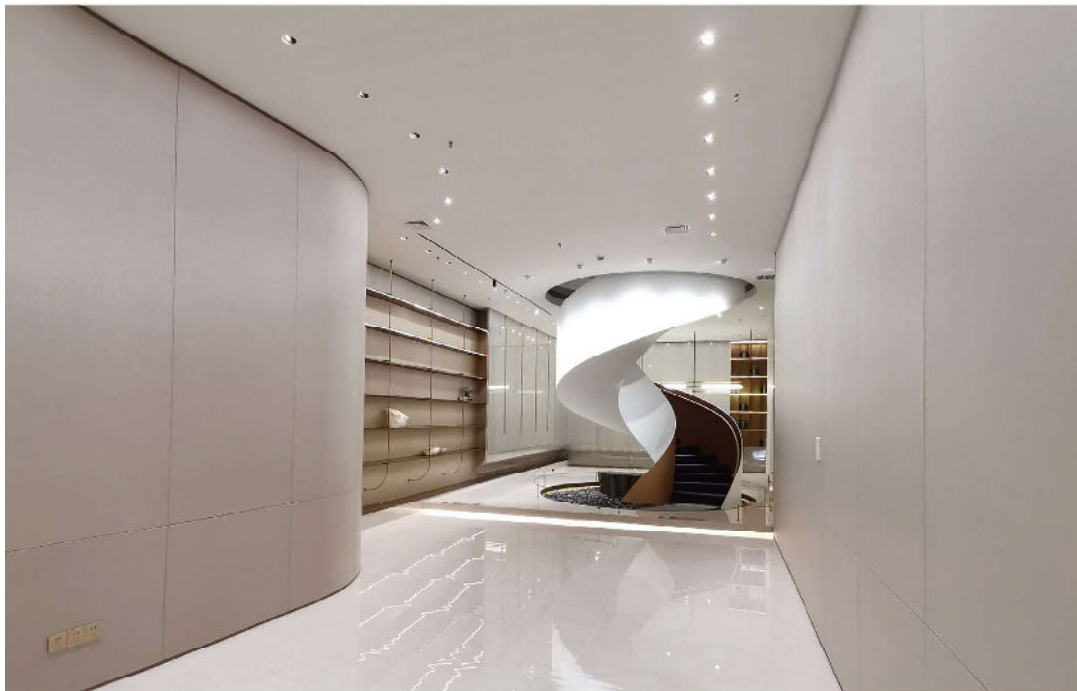
906-1691
Width: 137CM

906-1403
Width: 137CM

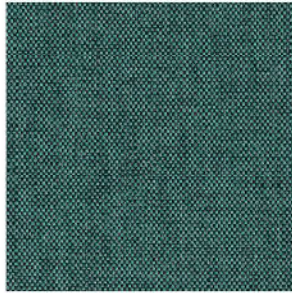
906-1606
Width: 137CM

906-1607
Width: 137CM

906-1802
Width: 137CM



► The well known xpe material wallcovering is available with an FR standard.



More Colors



Contents:	100% XPE
Use:	Panels, Wallcoverings
Alternate Uses:	Panels, Upholstery
Width:	54" / 137cm
Warranty:	Free of defects in workmanship and material for 10 years
Repeat:	Random Match
Packaging:	30 Yard Bolts
Backing:	Paper Backing
Available Backings:	Non Woven Backing
Durability:	No wear 1,000,000 Double Rubs
Cleaning Codes:	WS+BC-Water/Solvent + Bleach Cleanable
Flame Retardancy:	ASTM E84 CLASS A / C€
ECO Info:	PVC Free, Anti Bacterial, Responsible Return Program Extremely low VOCs, antibacterial, safely disposable Free of cadmium, mercury and ozone depleting chemicals
Notes:	Cut charge applies to orders under 50 yards
Other Options:	Options Available on a Minimum Yardage Basis: Custom color and design Embroidery, Emboss, Protective backing
ACT Symbols:	

Wallcoverings · Panels · Upholstery



906-1688
Width: 137CM

906-1683
Width: 137CM

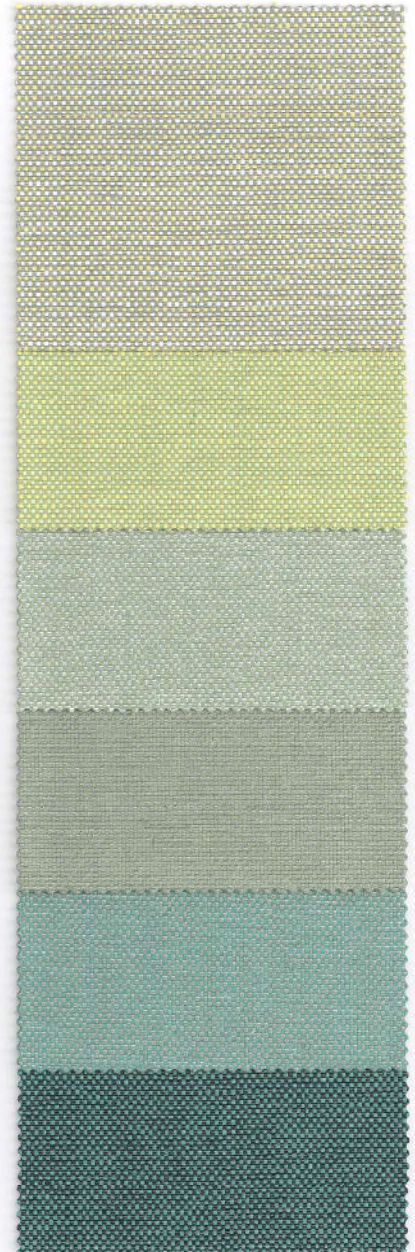
906-1546
Width: 137CM

906-1681
Width: 137CM

906-5009
Width: 137CM

906-1153
Width: 137CM

906-1363
Width: 137CM



906-5010
Width: 137CM

906-1610
Width: 137CM

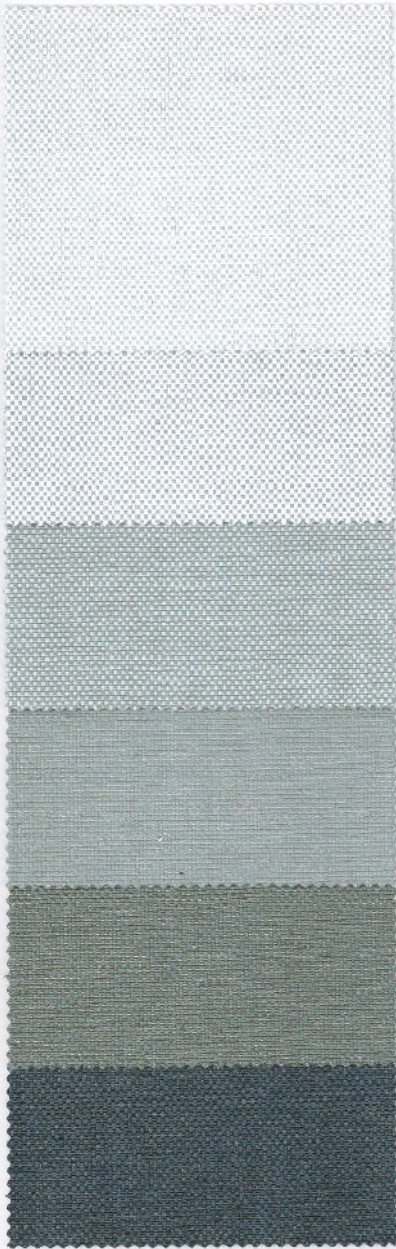
906-1611
Width: 137CM

906-1529
Width: 137CM

906-5008
Width: 137CM

906-1817
Width: 137CM

Wallcoverings · Panels · Upholstery



906-5000
Width: 137CM

906-1378
Width: 137CM

906-1584
Width: 137CM

906-5003
Width: 137CM

906-1618
Width: 137CM

906-1805
Width: 137CM



906-1531
Width: 137CM

906-5007
Width: 137CM

906-1585
Width: 137CM

906-1587
Width: 137CM

906-1330
Width: 137CM

906-1281
Width: 137CM

906-1686
Width: 137CM



► New pure colors , the finest designs , which are your best choice of wall materials.



More Colors



Contents:	100% XPE
Use:	Panels, Wallcoverings
Alternate Uses:	Panels, Upholstery
Width:	54"/114" Trimmed (137cm/290cm) ▶ = 2.9m±.3% width available
Warranty:	Free of defects in workmanship and material for 10 years
Repeat:	Random Match
Packaging:	30 Yard Bolts
Backing:	Paper Backing
Available Backings:	Non Woven Backing
Durability:	No wear 1,000,000 Double Rubs
Cleaning Codes:	WS+BC-Water/Solvent + Bleach Cleanable
Flame Retardancy:	ASTM E84 CLASS A / CE
ECO Info:	PVC Free, Anti Bacterial, Responsible Return Program Extremely low VOCs, antibacterial, safely disposable Free of cadmium, mercury and ozone depleting chemicals
Notes:	Cut charge applies to orders under 50 yards
Other Options:	Options Available on a Minimum Yardage Basis: Custom color and design Embroidery, Emboss, Protective backing
ACT Symbols:	♻️ 🌱 ♻️ ♻️ ♻️

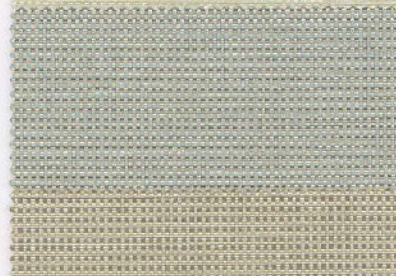
Wallcoverings · Panels · Upholstery



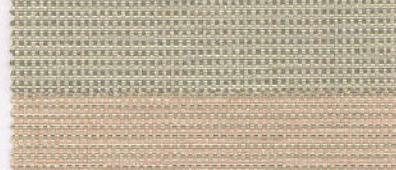
906-1819
Width: 137CM



906-1073
Width: 137CM



906-1472
Width: 137CM



906-1464
Width: 137CM



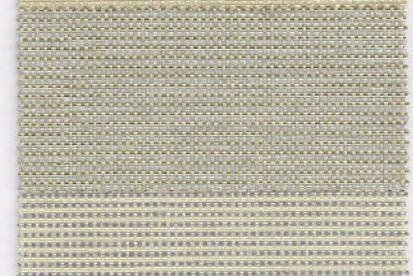
906-1468
Width: 137CM



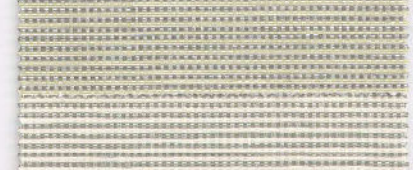
906-1823
Width: 137CM



906-1470
Width: 137CM



906-1467
Width: 137CM



906-1824
Width: 137CM

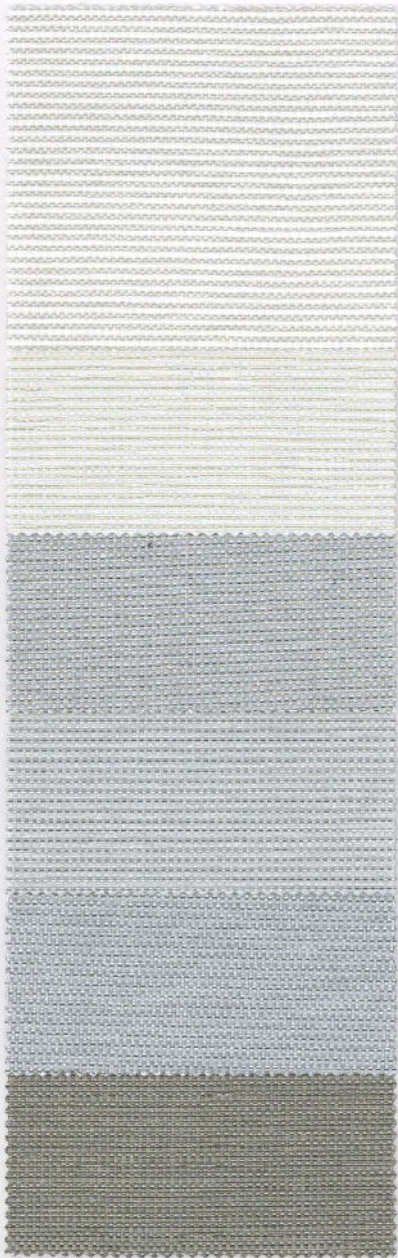


906-1484
Width: 137CM



906-1462
Width: 137CM

Wallcoverings · Panels · Upholstery



906-1822
Width: 137CM

906-1473
Width: 137CM

906-1826
Width: 137CM

906-1475
Width: 137CM

906-1821
Width: 137CM

906-1466
Width: 137CM



906-1820
Width: 137CM

906-1474
Width: 137CM

906-1380
Width: 137CM

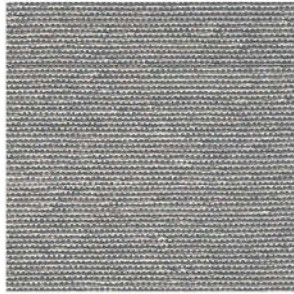
906-1463
Width: 137CM

906-1476
Width: 137CM

906-1465
Width: 137CM



► XPE Materials, 100% satisfaction & perfection guarantee.



More Colors



Contents:	100% XPE
Use:	Panels, Wallcoverings
Alternate Uses:	Panels, Upholstery
Width:	54" / 137cm
Warranty:	Free of defects in workmanship and material for 10 years
Repeat:	Random Match
Packaging:	30 Yard Bolts
Backing:	Paper Backing
Available Backings:	Non Woven Backing
Durability:	No wear 1,000,000 Double Rubs
Cleaning Codes:	WS+BC-Water/Solvent + Bleach Cleanable
Flame Retardancy:	ASTM E84 CLASS A / CE
ECO Info:	PVC Free, Anti Bacterial, Responsible Return Program Extremely low VOCs, antibacterial, safely disposable Free of cadmium, mercury and ozone depleting chemicals
Notes:	Cut charge applies to orders under 50 yards
Other Options:	Options Available on a Minimum Yardage Basis: Custom color and design Embroidery, Emboss, Protective backing
ACT Symbols:	🔥 🌿 ⚡ ♻️

Wallcoverings · Panels · Upholstery



906-1487
Width: 137CM

906-1622
Width: 137CM

906-1504
Width: 137CM

906-1501
Width: 137CM

906-1489
Width: 137CM

906-1521
Width: 137CM



906-1502
Width: 137CM

906-1488
Width: 137CM

906-1670
Width: 137CM

906-1698
Width: 137CM

906-1500
Width: 137CM

906-1518
Width: 137CM

Wallcoverings · Panels · Upholstery



906-1490
Width: 137CM

906-1519
Width: 137CM

906-1492
Width: 137CM

906-1510
Width: 137CM

906-1493
Width: 137CM

906-1498
Width: 137CM



906-1520
Width: 137CM

906-1517
Width: 137CM

906-1684
Width: 137CM

906-1499
Width: 137CM

906-1522
Width: 137CM

906-1226
Width: 137CM



► GREENLAND , We stand as representatives for high quality materials and processing techniques in the wallcoverings Industry.



More Colors



Contents:	100% XPE
Use:	Panels, Wallcoverings
Alternate Uses:	Panels, Upholstery
Width:	54" / 137cm
Warranty:	Free of defects in workmanship and material for 10 years
Repeat:	Random Match
Packaging:	30 Yard Bols
Backing:	Paper Backing
Available Backings:	Non Woven Backing
Durability:	No wear 1,000,000 Double Rubs
Cleaning Codes:	WS+BC-Water/Solvent + Bleach Cleanable
Flame Retardancy:	ASTM E84 CLASS A / CE
ECO Info:	PVC Free, Anti Bacterial, Responsible Return Program Extremely low VOCs, antibacterial, safely disposable Free of cadmium, mercury and ozone depleting chemicals
Notes:	Cut charge applies to orders under 50 yards
Other Options:	Options Available on a Minimum Yardage Basis: Custom color and design Embroidery, Emboss, Protective backing
ACT Symbols:	🔥 🌿 ⚡ ☆ ♻️

Wallcoverings · Panels · Upholstery



906-1505
Width:137CM

906-1099
Width:137CM

906-1506
Width:137CM

906-1512
Width:137CM

906-1495
Width:137CM



906-1000
Width:137CM

906-1507
Width:137CM

906-1503
Width:137CM

906-1515
Width:137CM

906-1581
Width:137CM

Wallcoverings · Panels · Upholstery



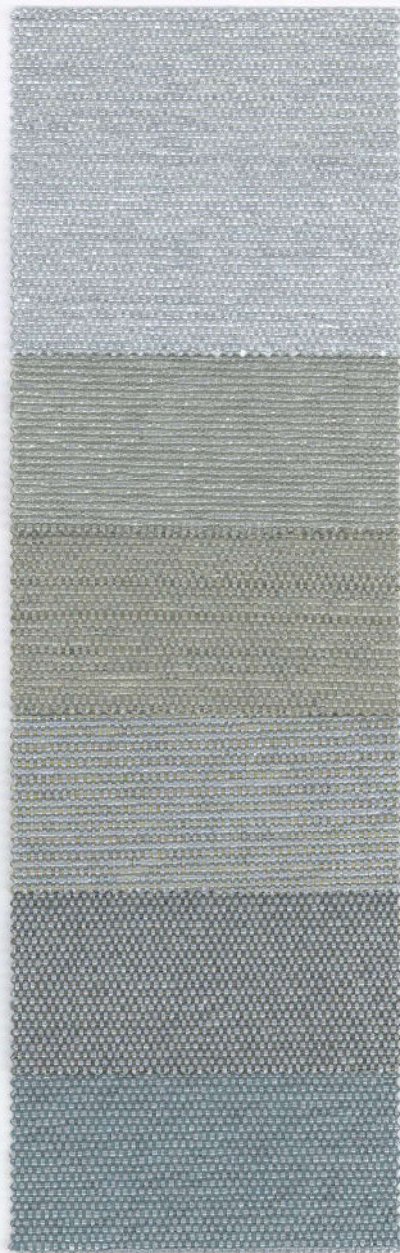
906-1619
Width: 137CM

906-1508
Width: 137CM

906-1672
Width: 137CM

906-1514
Width: 137CM

906-1511
Width: 137CM



906-1513
Width: 137CM

906-1509
Width: 137CM

906-1516
Width: 137CM

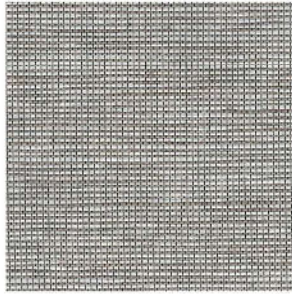
906-1497
Width: 137CM

906-1699
Width: 137CM

906-1494
Width: 137CM



► Wallcoverings design to meet any functional, environmental, or aesthetic requirement.



More Colors



Contents:	70% XPE , 20% Linen , 10% Polyester
Use:	Panels, Wallcoverings
Alternative Uses:	Panels, Upholstery
Width:	54" / 137cm
Warranty:	Free of defects in workmanship and material for 10 years
Repeat:	Random Match
Packaging:	30 Yard Bolts
Backings:	Paper Backing
Available Backings:	Non Woven Backing
Durability:	No wear 1,000,000 Double Rubs
Cleaning Codes:	WS+BC-Water/Solvent + Bleach Cleanable
Flame Retardancy:	ASTM E84 CLASS A / CE
ECO Info:	PVC Free, Anti Bacterial, Responsible Return Program Extremely low VOCs, antibacterial, safely disposable Free of cadmium, mercury and ozone depleting chemicals
Notes:	Cut charge applies to orders under 50 yards
Other Options:	Options Available on a Minimum Yardage Basis: Custom color and design Embroidery, Emboss, Protective backing
ACT Symbols:	♻️ 🌱 ⚡ ⚙️ ♻️

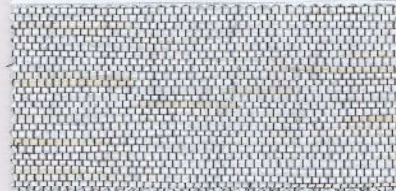
Wallcoverings · Panels · Upholstery



906-1702
Width: 137CM



906-1703
Width: 137CM



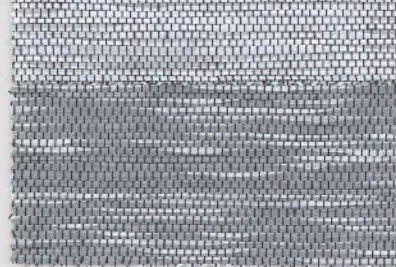
906-1708
Width: 137CM



906-1707
Width: 137CM



906-1709
Width: 137CM



906-1710
Width: 137CM



906-1700
Width: 137CM



906-1701
Width: 137CM



906-1728
Width: 137CM



906-1729
Width: 137CM



906-1725
Width: 137CM



906-1730
Width: 137CM

Wallcoverings · Panels · Upholstery



906-1716
Width: 137CM

906-1715
Width: 137CM

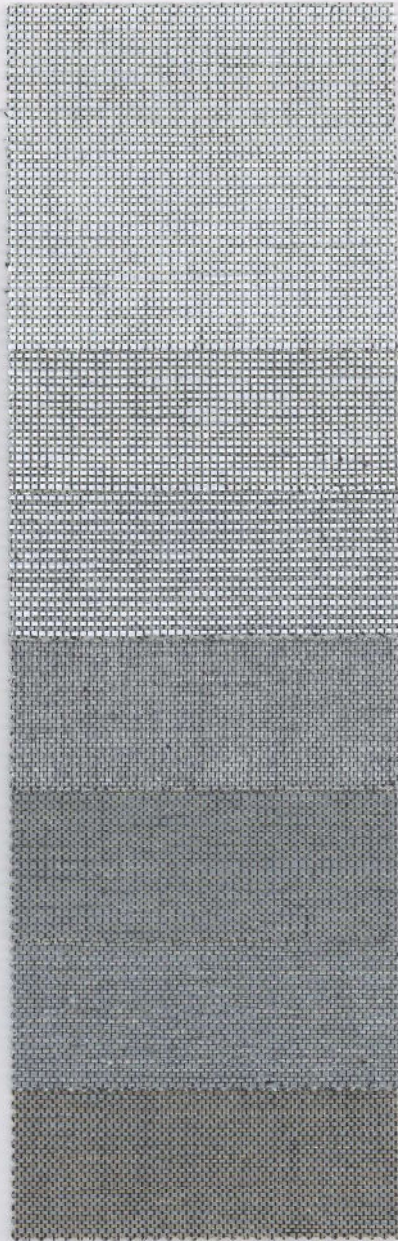
906-1717
Width: 137CM

906-1712
Width: 137CM

906-1713
Width: 137CM

906-1714
Width: 137CM

906-1726
Width: 137CM



906-1719
Width: 137CM

906-1720
Width: 137CM

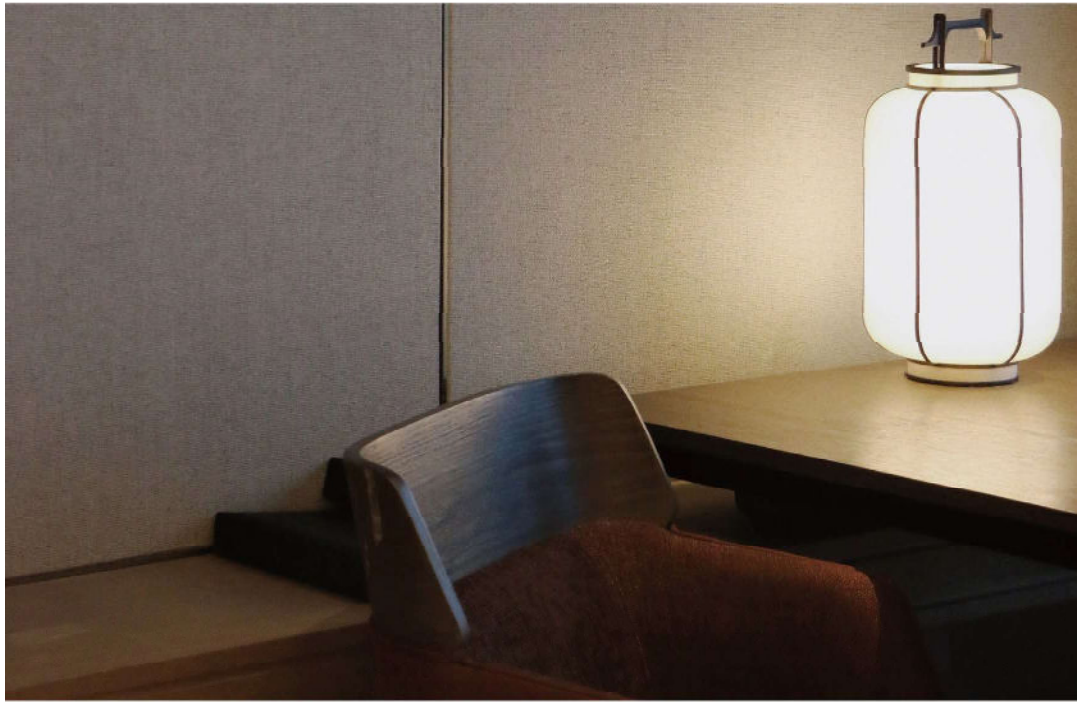
906-1722
Width: 137CM

906-1723
Width: 137CM

906-1721
Width: 137CM

906-1724
Width: 137CM

906-1718
Width: 137CM



► XPE , make a valuable difference to your design process.

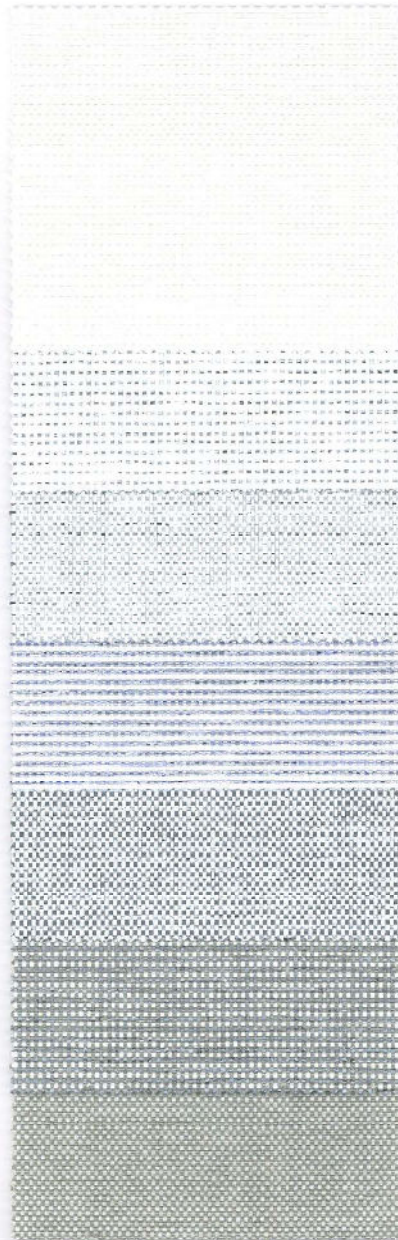


More Colors



Contents:	70% XPE , 20% Linen , 10% Polyester
Use:	Panels, Wallcoverings
Alternate Uses:	Panels, Upholstery
Width:	54" / 137cm
Warranty:	Free of defects in workmanship and material for 10 years
Repeat:	Random Match
Packaging:	30 Yard Bolts
Backing:	Paper Backing
Available Backings:	Non Woven Backing
Durability:	No wear 1,000,000 Double Rubs
Cleaning Codes:	WS+BC-Water/Solvent + Bleach Cleanable
Flame Retardancy:	ASTM E84 CLASS A / CE
ECO Info:	PVC Free, Anti Bacterial, Responsible Return Program Extremely low VOCs, antibacterial, safely disposable Free of cadmium, mercury and ozone depleting chemicals
Notes:	Cut charge applies to orders under 50 yards
Other Options:	Options Available on a Minimum Yardage Basis: Custom color and design Emroidery, Emboss, Protective backing
ACT Symbols:	

Wallcoverings · Panels · Upholstery



906-1827
Width: 137CM

906-1828
Width: 137CM

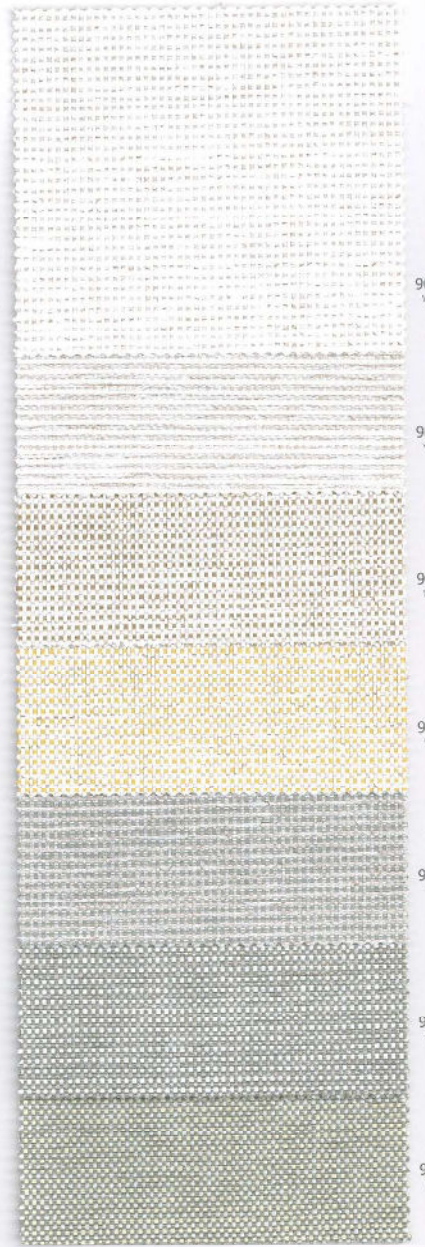
906-1829
Width: 137CM

906-1830
Width: 137CM

906-1831
Width: 137CM

906-1832
Width: 137CM

906-1833
Width: 137CM



906-1834
Width: 137CM

906-1835
Width: 137CM

906-1836
Width: 137CM

906-1837
Width: 137CM

906-1838
Width: 137CM

906-1839
Width: 137CM

906-1840
Width: 137CM

Wallcoverings · Panels · Upholstery



906-1783
Width: 137CM

906-1785
Width: 137CM

906-1786
Width: 137CM

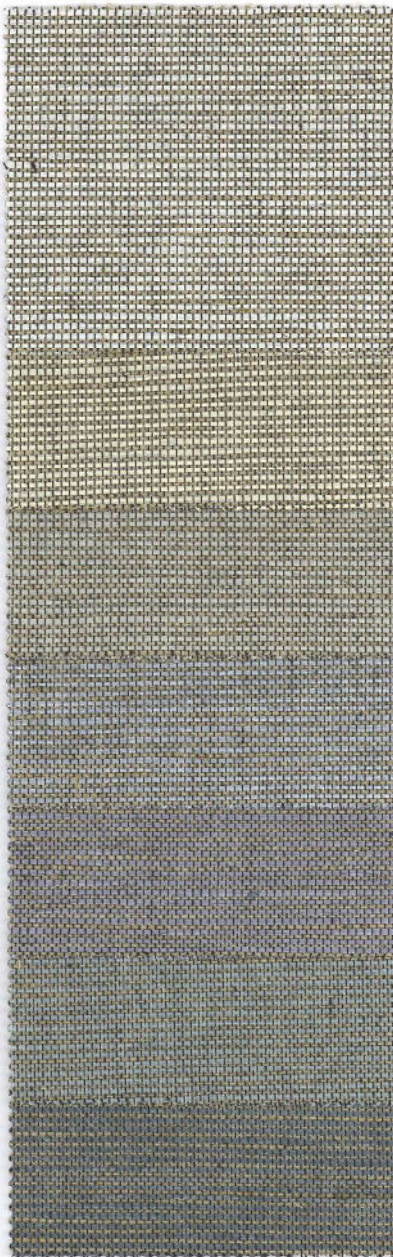
906-1782
Width: 137CM

906-1784
Width: 137CM

906-1787
Width: 137CM

906-1788
Width: 137CM

906-1789
Width: 137CM



906-1791
Width: 137CM

906-1792
Width: 137CM

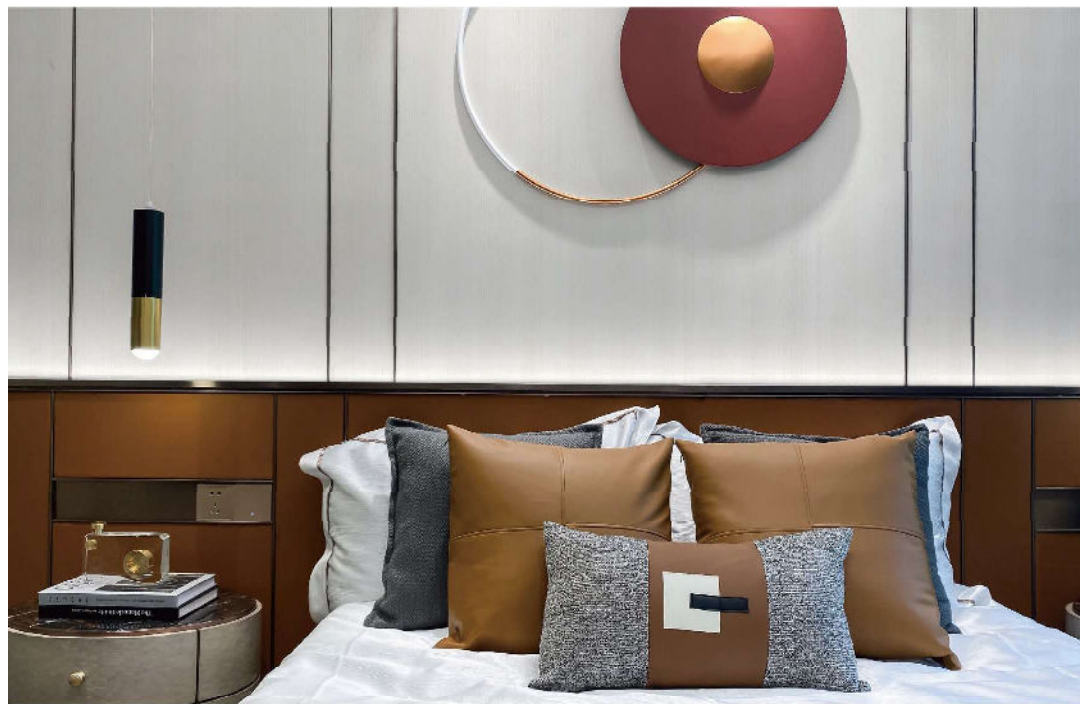
906-1793
Width: 137CM

906-1794
Width: 137CM

906-1790
Width: 137CM

906-1795
Width: 137CM

906-1796
Width: 137CM



► XPE, high performance durable and easily maintained woven textile wallcoverings.



More Colors



Contents:	65% XPE , 35% Rayon
Use:	Panels, Wallcoverings
Alternative Uses:	Panels, Upholstery
Width:	54" / 137cm
Warranty:	Free of defects in workmanship and material for 10 years
Repeat:	Random Match
Packaging:	30 Yard Bolts
Backings:	Paper Backing
Available Backings:	Non Woven Backing
Durability:	No wear 1,000,000 Double Rubs
Cleaning Codes:	WS+RC-Water/Solvent + Bleach Cleanable
Flame Retardancy:	ASTM E84 CLASS A / CE
ECO Info:	PVC Free, Anti Bacterial, Responsible Return Program Extremely low VOCs, antibacterial, safely disposable Free of cadmium, mercury and ozone depleting chemicals
Notes:	Cut charge applies to orders under 50 yards
Other Options:	Options Available on a Minimum Yardage Basis: Custom color and design Embroidery, Emboss, Protective backing

ACT Symbols: ♻️ 🌱 🌞 🌿 ♻️

Wallcoverings · Panels · Upholstery



906-1841
Width: 137CM

906-1842
Width: 137CM

906-1843
Width: 137CM

906-1844
Width: 137CM

906-1845
Width: 137CM

906-1846
Width: 137CM

906-1847
Width: 137CM

906-1848
Width: 137CM



906-1849
Width: 137CM

906-1850
Width: 137CM

906-1851
Width: 137CM

906-1852
Width: 137CM

906-1853
Width: 137CM

906-1854
Width: 137CM

906-1855
Width: 137CM

906-1856
Width: 137CM

Wallcoverings · Panels · Upholstery



906-1737
Width: 137CM

906-1738
Width: 137CM

906-1739
Width: 137CM

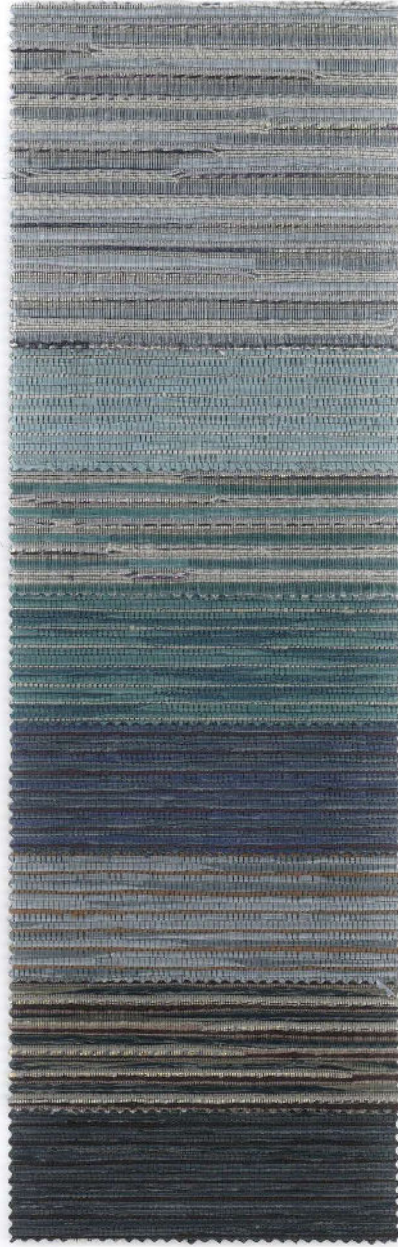
906-1731
Width: 137CM

906-1740
Width: 137CM

906-1746
Width: 137CM

906-1734
Width: 137CM

906-1736
Width: 137CM



906-1732
Width: 137CM

906-1742
Width: 137CM

906-1733
Width: 137CM

906-1743
Width: 137CM

























906-1744
Width: 137CM

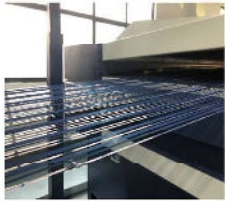
906-1741
Width: 137CM

906-1735
Width: 137CM

906-1745
Width: 137CM

Thanks to:



XPE Materials, 100% Satisfaction & Perfection Guarantee.