



Goodrich Global
SINCE 1983

PREMIERWALL
AZURITE

2023-2027

Wallcovering
Fabric Backed
Vinyl Type II





PREMIERWALL AZURITE

52 - 54" Fabric-Backed Contract Wallcovering

PHYSICAL PROPERTIES

Weight 20 oz. PLY / 618 - 620G/PLM
Roll Size 52-54" x 30yds
Backing Woven / Non Woven

Meets or exceeds Federal Specification CCC-W-408D for Type II Wallcovering

FIRE SAFETY

- Class "A" fire rated - tested in accordance with ASTM E-84 Tunnel test
- Flame spread: 25 / Smoke developed: 45
- Passes NFPA 286 Corner Burn Test

CLEANING/MAINTENANCE

Metallic finishes can be discolored with the use of caustic cleaners. Thus, we recommend only the use of a mild soap solution for cleaning these products. If stronger cleaning is required, first evaluate the cleaner in an inconspicuous location.

ANTI-MICROBIAL FEATURES

PREMIERWALL AZURITE can be perforated, with 30 yard minimum requirement, for enhanced permeability. This product is intended for use in buildings that are properly designed and maintained to avoid moisture infiltration, condensation and/or accumulation at wall cavities and wall surfaces, particularly in warm, humid climates. Goodrich wallcoverings contain anti-microbial additives to resist the growth of mildew and bacteria and pass ASTM G-21. These additives will not prevent mold growth if residual wall moisture is in excess of 4% and/or is allowed to accumulate in or behind the walls.

BATCHING

Since slight variation in shading may occur time to time, it is important that the roll carrying the same batch number be used in any one area.

ORIGIN

USA



PREMIERWALL
AZURITE

LINDEN II

With a simple yet rustic construction, Linden II has natural weave characteristics, with a tweed-like linen texture.

SPECIFICATIONS & PROPERTIES

WEIGHT

20 oz. PLY / 620G/PLM 13.3 oz.

WIDTH

52" - 54" (132 - 137cm)

BACKING

Woven

PATTERN MATCH

Straight Random

HORIZONTAL REPEAT


N.A.

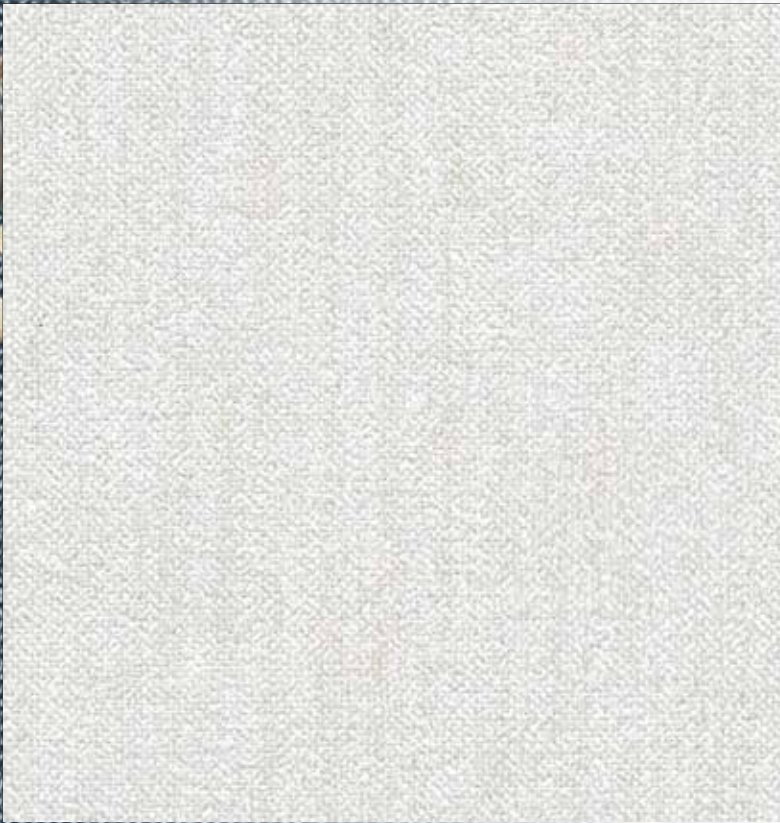
VERTICAL REPEAT

N.A.

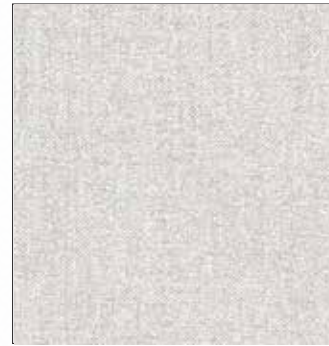
Custom colors, weights, widths and microventing are available.

ENVIRONMENTAL & HEALTH

-  In accordance with EN 15102:2007 + A1:2011
- Meets California Section 01350 IAQ test requirements for wallcovering



PWA0101



PWA0102



PWA0103



PWA0104



PWA0105



PWA0106



PWA0107



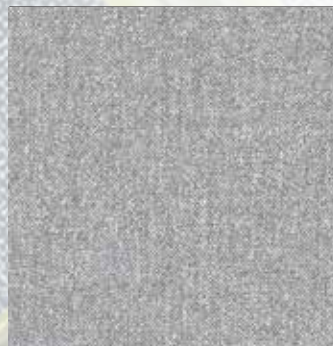
PWA0108



PWA0109



PWA0110



PWA0111



PWA0112



PWA0113



PWA0114



PWA0115



PWA0116



PWA0117



PWA0118



PWA0119



PWA0120

KIMONO II

Kimono II is a horizontal design inspired by the silk used in Japanese kimonos. Kimonos made from silk are considered top-quality and a lifetime investment; they can be used for generations. Kimono II is offered in contemporary colors with an added slub texture for dimension and interest.

SPECIFICATIONS & PROPERTIES

WEIGHT

20 oz. PLY / 620G/PLM 13.3 oz.

WIDTH

52" - 54" (132 - 137cm)

BACKING

Woven

PATTERN MATCH

Reverse Random

HORIZONTAL REPEAT

N.A.

VERTICAL REPEAT

N.A.

Custom colors, weights, widths and microventing are available.

ENVIRONMENTAL & HEALTH

- **CE** In accordance with EN 15102:2007 + A1:2011
- Meets California Section 01350 IAQ test requirements for wallcovering





PWA0201



PWA0202



PWA0203



PWA0204



PWA0205



PWA0206



PWA0207



PWA0208



PWA0209



PWA0210



PWA0211



PWA0212



PWA0213



PWA0214



PWA0215



PWA0216



PWA0217



PWA0218



PWA0219



PWA0220



PWA0221

MARMORINO

The Alpha Workshops, dedicated to creating beauty and changing lives, is proud to introduce Marmorino. This Italian, polished, plaster look is created from the artisan's handmade finish. Marmorino's delicate tones take inspiration from an ancient craft in a palette of colors that resemble the visual experience of a Venetian tour.

SPECIFICATIONS & PROPERTIES

WEIGHT

20 oz. PLY / 620G/PLM 13.3 oz.

WIDTH

52" - 54" (132 - 137cm)

BACKING

Non-woven

PATTERN MATCH

Straight Match

HORIZONTAL REPEAT


53"

VERTICAL REPEAT

24"

Custom colors, weights, widths and microventing are available.

ENVIRONMENTAL & HEALTH

-  In accordance with EN 15102:2007 + A1:2011
- Meets California Section 01350 IAQ test requirements for wallcovering

53"

24"



PWA0301



PWA0302



PWA0303



PWA0304



PWA0305



PWA0306



PWA0307



PWA0308



PWA0309



PWA0310



PWA0311



PWA0312



PWA0313



PWA0314



PWA0315



PWA0316



PWA0317



PWA0318



PWA0319

ARLO

Arlo combines the aesthetic of naturally woven grasscloth with the durability and ease of maintenance from a hardworking commercial wallcovering. The print and emboss combination in this pattern simulate the appearance and texture of a naturally woven material.

SPECIFICATIONS & PROPERTIES

WEIGHT

20 oz. PLY / 620G/PLM 13.3 oz.

WIDTH

52" - 54" (132 - 137cm)

BACKING

Non-woven

PATTERN MATCH

Straight Random

HORIZONTAL REPEAT

52"

VERTICAL REPEAT

18"

Custom colors, weights, widths and microventing are available.

ENVIRONMENTAL & HEALTH

- CE In accordance with EN 15102:2007 + A1:2011
- Meets California Section 01350 IAQ test requirements for wallcovering

52"

18"



PWA0401



PWA0402



PWA0403



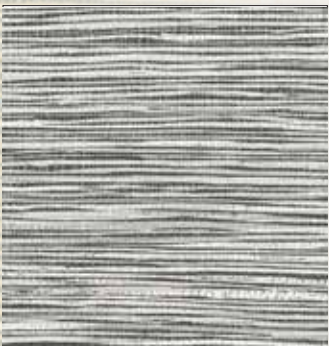
PWA0404



PWA0405



PWA0406



PWA0407



PWA0408



PWA0409



PWA0410



PWA0411



PWA0412



PWA0413



PWA0414



PWA0415



PWA0416



PWA0417



PWA0418



PWA0419



PWA0420

WHITE CREEK

White Creek is a soft, vertical, woodgrain texture that has subtle indications of cascades and graining within the design. White Creek takes advantage of our rotogravure printing technique by showcasing a variety of hues within each colorway, keeping them subdued but interesting, and controlling the amount of grain in the design, not too much or too little.

SPECIFICATIONS & PROPERTIES

WEIGHT

20 oz. PLY / 618G/PLM 13.3 oz.

WIDTH

52" - 54" (132 - 137cm)

BACKING

Woven

PATTERN MATCH

Reverse Random

HORIZONTAL REPEAT


N.A.

VERTICAL REPEAT

N.A.

Custom colors, weights, widths and microventing are available.

ENVIRONMENTAL & HEALTH

-  In accordance with EN 15102:2007 + A1:2011
- Meets California Section 01350 IAQ test requirements for wallcovering



PWA0501



PWA0502



PWA0503



PWA0504



PWA0505



PWA0506



PWA0507



PWA0508



PWA0509



PWA0510



PWA0511

THREADED

Threaded is a small-scale, vertical striped pattern that takes a modern twist on a classic staple. The colorways in Threaded are a fresh interpretation of traditional hues. Indigo, Ocean, and Sap are useable blues and greens without being oversaturated. The remainder of the palette is leveled out with fresh neutrals that add a soothing balance to any interior.

SPECIFICATIONS & PROPERTIES

WEIGHT

20 oz. PLY / 618G/PLM 13.3 oz.

WIDTH

52" - 54" (132 - 137cm)

BACKING

Woven

PATTERN MATCH

Reverse Random

HORIZONTAL REPEAT


N.A.

VERTICAL REPEAT

N.A.

Custom colors, weights, widths and microventing are available.

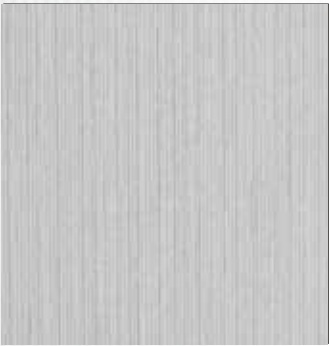
ENVIRONMENTAL & HEALTH

-  In accordance with EN 15102:2007 + A1:2011
- Meets California Section 01350 IAQ test requirements for wallcovering





PWA0601



PWA0602



PWA0603



PWA0604



PWA0605



PWA0606



PWA0607



PWA0608



PWA0609



PWA0610



PWA0611



PWA0612



PWA0613



PWA0614

FLEUR

A procession of petals and delicate translation punctuate the flow of a natural feminine origin. Fleur makes a dramatic introduction in deep sultry Parisian hues, while softly blushing in the neutral tones of romance.

SPECIFICATIONS & PROPERTIES

WEIGHT
20 oz. PLY / 620G/PLM 13.3 oz.

WIDTH
52 - 54" (132 - 137cm)

BACKING
Non-woven

PATTERN MATCH
Straight Match

HORIZONTAL REPEAT
18"

VERTICAL REPEAT
18"

Custom colors, weights, widths and microventing are available.

ENVIRONMENTAL & HEALTH

- **CE** In accordance with EN 15102:2007 + A1:2011
- Meets California Section 01350 IAQ test requirements for wallcovering

18"



18"





PWA0701



PWA0702



PWA0703



PWA0704



PWA0705



PWA0706



PWA0707



PWA0708



PWA0709



PWA0710



PWA0711

HIGHLANDER

Highlander's plaid design evokes a feeling of security within a space with its grids and organization. Highlander is colored in timeless neutrals, soft hues, and a few strong accents.

SPECIFICATIONS & PROPERTIES

WEIGHT

20 oz. PLY / 620G/PLM 13.3 oz.

WIDTH

52" - 54" (132 - 137cm)

BACKING

Non woven

PATTERN MATCH

Reverse Random

HORIZONTAL REPEAT


N.A.

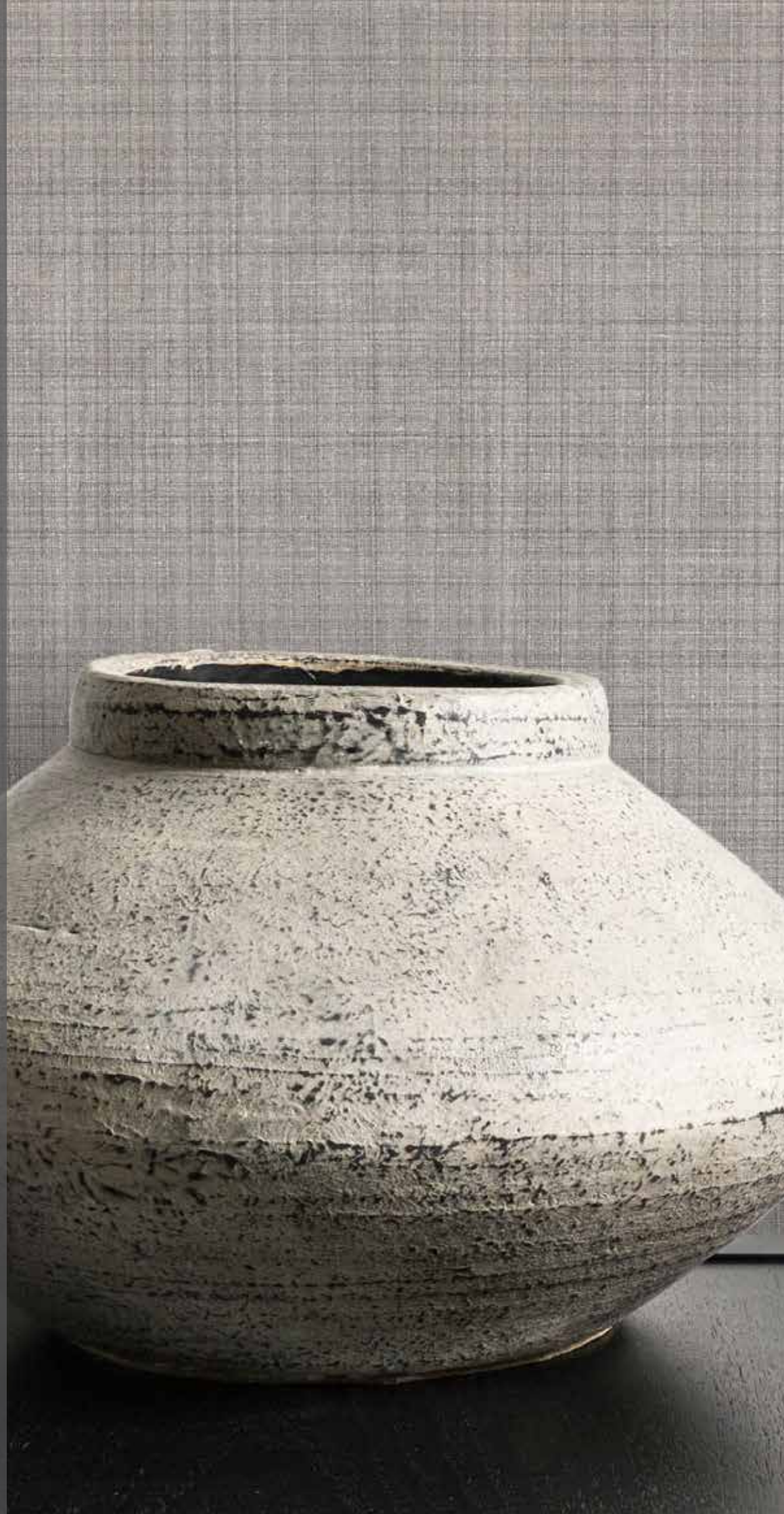
VERTICAL REPEAT

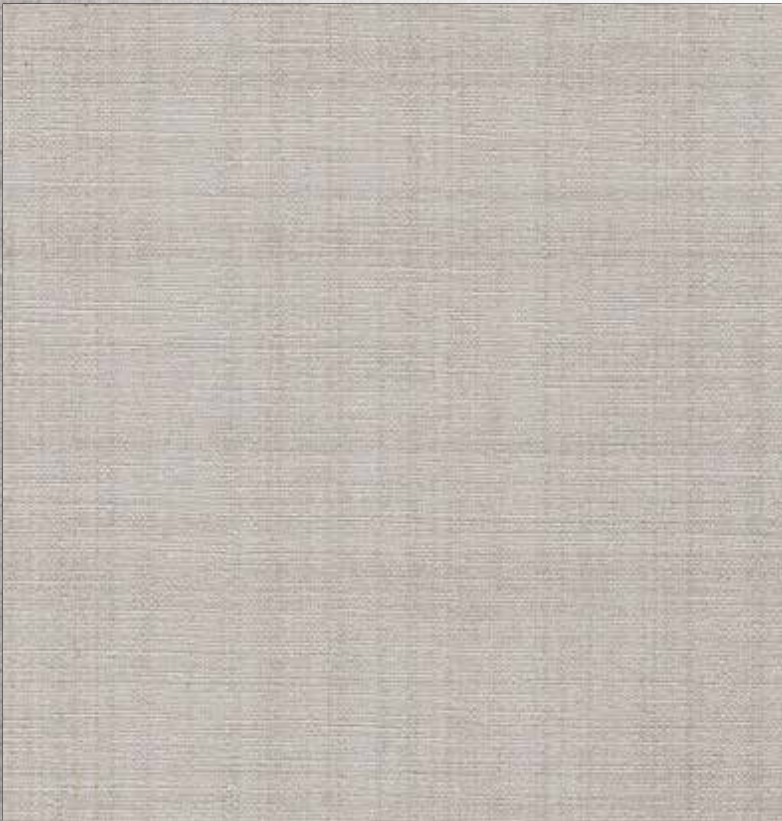
N.A.

Custom colors, weights, widths and microventing are available.

ENVIRONMENTAL & HEALTH

-  In accordance with EN 15102:2007 + A1:2011
- Meets California Section 01350 IAQ test requirements for wallcovering





PWA0801



PWA0802



PWA0803



PWA0804



PWA0805



PWA0806



PWA0807



PWA0808



PWA0809



PWA0810



PWA0811



PWA0812



PWA0813



PWA0814



PWA0815



PWA0816



PWA0817

HARIRI

Translating to 'silk' in Swahili, Clodagh's fascination with hand-woven silks began during her travels to Africa while working with the Samburu tribe.

Hariri & its coordinate Hariri Stripe are a nod to the rich, defined, woven silks found while exploring local markets. This collection honors the slight imperfections of the hand-made.

SPECIFICATIONS & PROPERTIES

WEIGHT

20 oz. PLY / 620G/PLM 13.3 oz.

WIDTH

52" - 54" (132 - 137cm)

BACKING

Non woven

PATTERN MATCH

Straight Match

PATTERN REPEAT

26" W X 18" H

HORIZONTAL REPEAT


26"

VERTICAL REPEAT

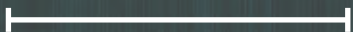
18"

Custom colors, weights, widths and microventing are available.

ENVIRONMENTAL & HEALTH

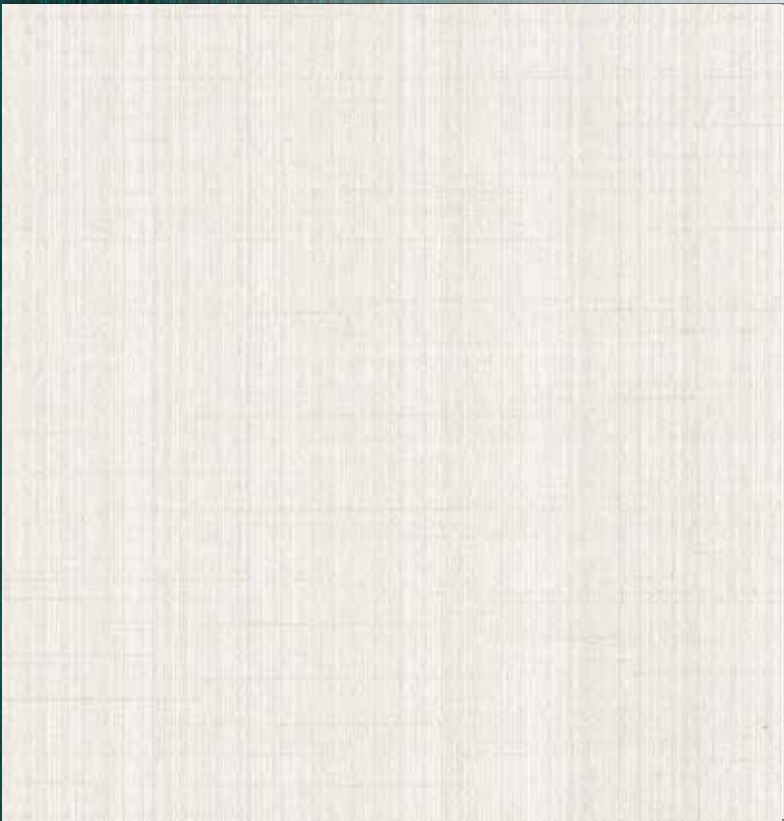
-  In accordance with EN 15102:2007 + A1:2011
- Meets California Section 01350 IAQ test requirements for wallcovering

26"



18"





PWA0901



PWA0902



PWA0903



PWA0904



PWA0905



PWA0906



PWA0907



PWA0908



PWA0909



PWA0910



PWA0911



PWA0912



PWA0913



PWA0914



PWA0915



PWA0916



PWA0917



PWA0918

HARIRI STRIPE

Translating to ‘silk’ in Swahili, Clodagh’s fascination with hand-woven silks began during her travels to Africa while working with the Samburu tribe.

Hariri & its coordinate Hariri Stripe are a nod to the rich, defined, woven silks found while exploring local markets. This collection honors the slight imperfections of the hand-made.

SPECIFICATIONS & PROPERTIES

WEIGHT
20 oz. PLY / 620G/PLM 13.3 oz.

WIDTH
52" - 54" (132 - 137cm)

BACKING
Non woven


PATTERN MATCH
Straight Match

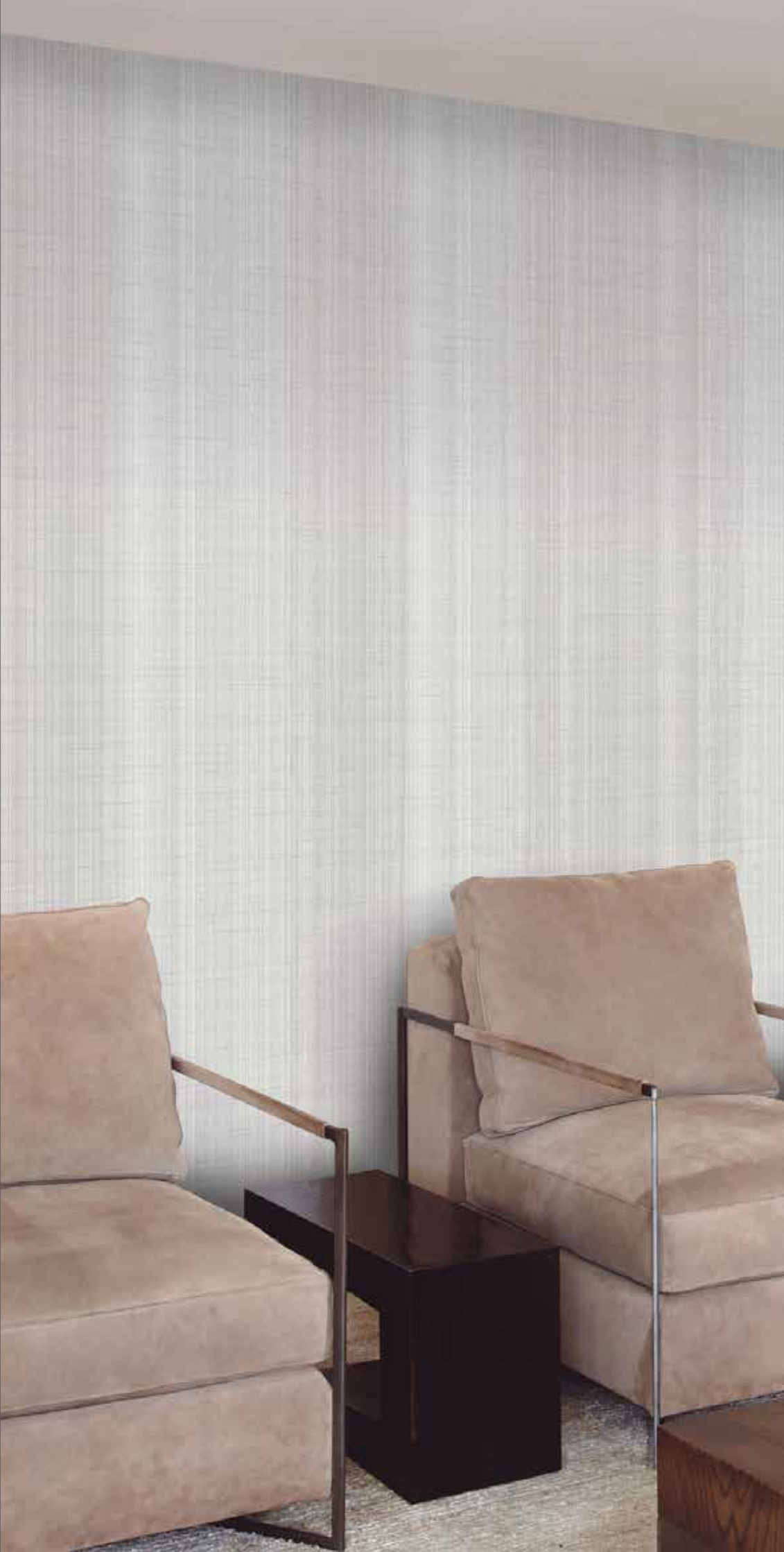
HORIZONTAL REPEAT
52"

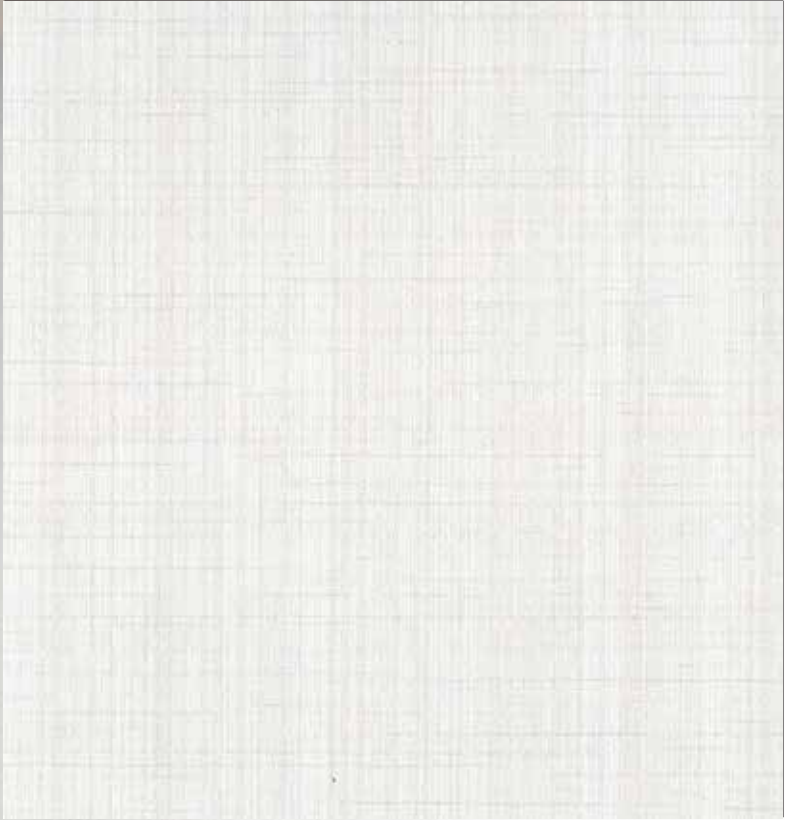
VERTICAL REPEAT
18"

Custom colors, weights, widths and microventing are available.

ENVIRONMENTAL & HEALTH

-  In accordance with EN 15102:2007 + A1:2011
- Meets California Section 01350 IAQ test requirements for wallcovering





PWA1001



PWA1002



PWA1003



PWA1004



PWA1005



PWA1006



PWA1007



PWA1008

CHATEAU

Biophilic design incorporates natural material, natural light, vegetation, nature views and other experiences of the natural world into the modern built environment.

Chateau is a biophilic design that brings the beautiful imperfections of wood to life. Slats of wood sit side by side, each piece unique, just as nature intended. Perfect for any interior that needs a warm, natural finish.

SPECIFICATIONS & PROPERTIES

WEIGHT

20 oz. PLY / 620G/PLM 13.3 oz.

WIDTH

52 - 54" (132 - 137cm)

BACKING

Woven

PATTERN MATCH

Reverse Random

HORIZONTAL REPEAT

N.A.

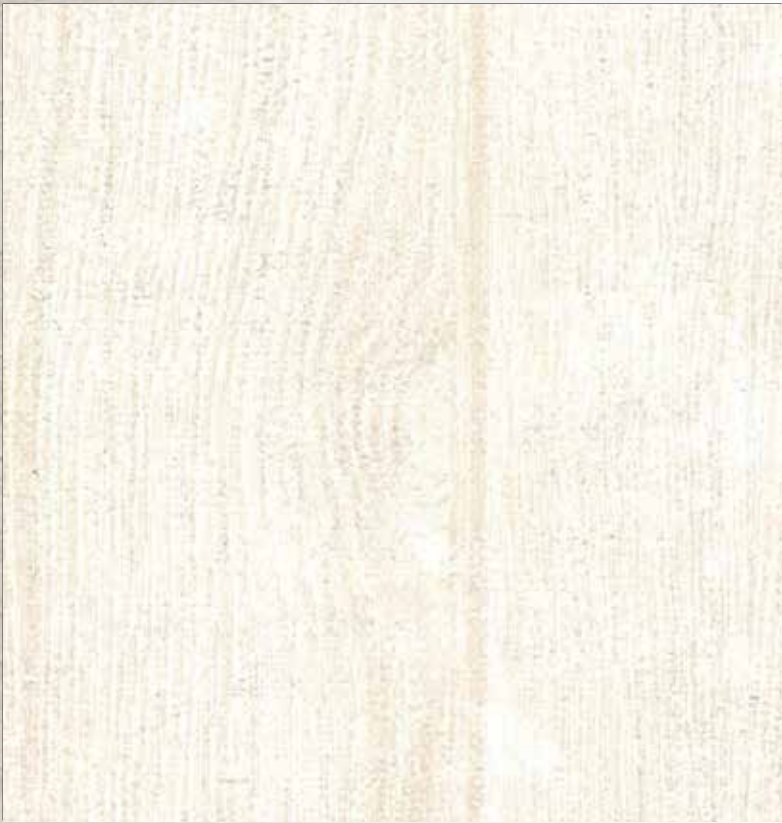
VERTICAL REPEAT

N.A.

Custom colors, weights, widths and microventing are available.

ENVIRONMENTAL & HEALTH

- Meets California Section 01350 IAQ test requirements for wallcovering



PWA1101



PWA1102



PWA1103



PWA1104



PWA1105



PWA1106



PWA1107



PWA1108



PWA1109



PWA1110



PWA1111



PWA1112



PWA1113

HARRIET

Harriet's graphic mix of colors infuse a room with playful personality and dimension through structured geometric shapes, creating a stylish expression.

Colorways range from comfortable, neutral tones to striking accent colors reflecting an organic and versatile palette. The use of color emphasizes different effects of the design: subtle shades create a soft effect while more contrasting tones give a room a dramatic feel.

SPECIFICATIONS & PROPERTIES

WEIGHT

20 oz. PLY / 618G/PLM 13.3 oz.

WIDTH

52" - 54" (132 - 137cm)

BACKING

Non woven

PATTERN MATCH

Straight Match

HORIZONTAL REPEAT


52"

VERTICAL REPEAT

24"

Custom colors, weights, widths and microventing are available.

ENVIRONMENTAL & HEALTH

-  In accordance with EN 15102:2007 + A1:2011
- Meets California Section 01350 IAQ test requirements for wallcovering

52"

24"



PWA1201



PWA1206



PWA1210



PWA1207



PWA1211



PWA1202



PWA1204



PWA1208



PWA1212



PWA1203



PWA1205



PWA1209



PWA1201



PWA1204



PWA1207



PWA1210



PWA1202



PWA1205



PWA1208



PWA1211



PWA1203



PWA1206



PWA1209



PWA1212



PWA1301



PWA1302



PWA1303



PWA1304



PWA1305



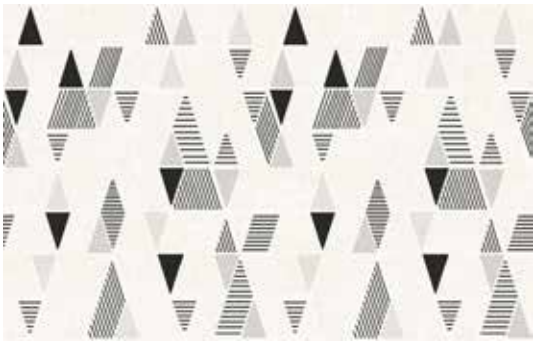
PWA1306



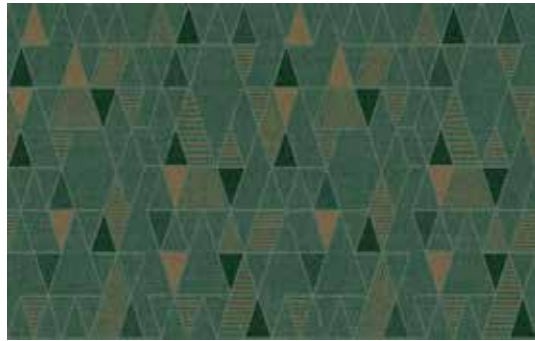
PWA1307



PWA1308



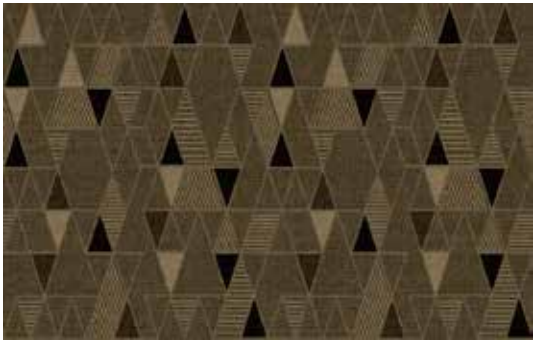
PWA1309



PWA1310



PWA1311



PWA1312

MILO

Milo is a juxtaposition of simple geometric forms in a medium-scale design. The pattern is printed and embossed with an organic weave texture.

With an array of color options available, Milo moves from playful, with pops of yellow, parakeet green, and teal to a more graphic representation in black and white. The introduction of metallics to the design adds a modern refined touch to the introduction.

SPECIFICATIONS & PROPERTIES

WEIGHT
20 oz. PLY / 620G/PLM 13.3 oz.

WIDTH
52" - 54" (132 - 137cm)

BACKING
Non woven

PATTERN MATCH
Straight Match

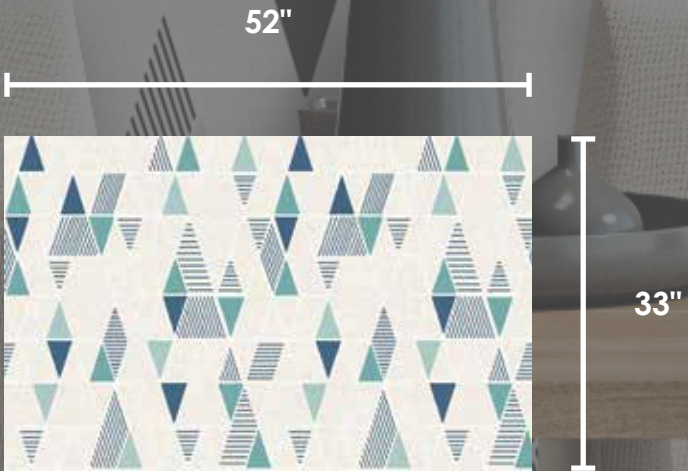
HORIZONTAL REPEAT
52"

VERTICAL REPEAT
33"

Custom colors, weights, widths and microventing are available.

ENVIRONMENTAL & HEALTH

- C€ In accordance with EN 15102:2007 + A1:2011
- Meets California Section 01350 IAQ test requirements for wallcovering





PWA1301



PWA1302



PWA1303



PWA1304



PWA1305



PWA1306



PWA1307



PWA1308



PWA1309



PWA1310



PWA1311



PWA1312

HOUSE OF TWEED

The movement within this traditional weave puts an emphasis on comfort. The cubed interpretation of a weave combined with a soft vertical yarn print creates a pattern with structure and a connection to comforting nostalgia.

The color palette, named after many styles of architecture, features a rich teal, soft blue, earth tones, and classic, fashionable neutrals in bold and subtle shades.

SPECIFICATIONS & PROPERTIES

WEIGHT

20 oz. PLY / 618G/PLM 13.3 oz.

WIDTH

52" - 54" (132 - 137cm)

BACKING

Woven

PATTERN MATCH

Reverse Random

HORIZONTAL REPEAT


N.A.

VERTICAL REPEAT

N.A.

Custom colors, weights, widths and microventing are available.

ENVIRONMENTAL & HEALTH

-  In accordance with EN 15102:2007 + A1:2011
- Meets California Section 01350 IAQ test requirements for wallcovering



PWA1401



PWA1402



PWA1403



PWA1404



PWA1405



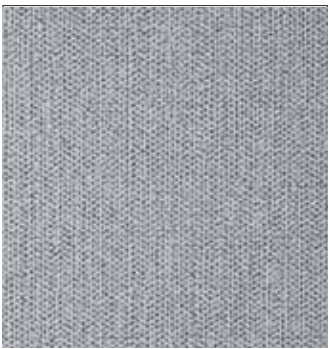
PWA1406



PWA1407



PWA1408



PWA1409



PWA1410



PWA1411



PWA1412



PWA1413



PWA1414



PWA1415



PWA1416



PWA1417



PWA1418

INTERLOOM

Interloom intertwines the craftsmanship of a finely loomed textile with the fluidity of spun threads in a color line of soft heather.

SPECIFICATIONS & PROPERTIES

WEIGHT

20 oz. PLY / 620G/PLM 13.3 oz.

WIDTH

52" - 54" (132 - 137cm)

BACKING

Woven

PATTERN MATCH

Reverse Random

HORIZONTAL REPEAT

N.A.

VERTICAL REPEAT

N.A.

Custom colors, weights, widths and microventing are available.

ENVIRONMENTAL & HEALTH

- **CE** In accordance with EN 15102:2007 + A1:2011
- Meets California Section 01350 IAQ test requirements for wallcovering



PWA1501



PWA1502



PWA1503



PWA1504



PWA1505



PWA1506



PWA1507



PWA1508



PWA1509



PWA1510



PWA1511



PWA1512



PWA1513



PWA1514



PWA1515



PWA1516



PWA1517



PWA1518



PWA1519



PWA1520



PWA1521

JENSEN

Jensen is a soft, small-scale, organic pattern evoking the look of weather-worn stone. Subtle undertones in the context of this design complement the main color story, providing depth and dimension.

The soothing color palette takes cues from nature, Paper Birch is a light-toned neutral with a hint of warmth. Cement, a mid-tone neutral is like a chameleon, with a combination of both cool and warm neutrals, it takes on the tones of its surroundings. Penny is a shaded copper hue that reminds you of a worn coin, with undertones of an aged patina.

SPECIFICATIONS & PROPERTIES

WEIGHT

20 oz. PLY / 620G/PLM 13.3 oz.

WIDTH

52" - 54" (132 - 137cm)

BACKING

Non woven

PATTERN MATCH

Straight Random

HORIZONTAL REPEAT


53"

VERTICAL REPEAT

18"

Custom colors, weights, widths and microventing are available.

ENVIRONMENTAL & HEALTH

-  In accordance with EN 15102:2007 + A1:2011
- Meets California Section 01350 IAQ test requirements for wallcovering

53"

18"



PWA1601



PWA1602



PWA1603



PWA1604



PWA1605



PWA1606



PWA1607



PWA1608



PWA1609



PWA1610



PWA1611



PWA1612



PWA1613



PWA1614



PWA1615



PWA1616

OTIS

Otis, an organic weave texture, adds textile-like qualities to the wall for an effortless and cozy yet sophisticated design.

This versatile pattern fits well with several design categories and coordinates with our existing Milo pattern for both color and emboss.

SPECIFICATIONS & PROPERTIES

WEIGHT

20 oz. PLY / 618G/PLM 13.3 oz.

WIDTH

52" - 54" (132 - 137cm)

BACKING

Woven

PATTERN MATCH

Reverse Random

HORIZONTAL REPEAT


N.A.

VERTICAL REPEAT

N.A.

Custom colors, weights, widths and microventing are available.

ENVIRONMENTAL & HEALTH

-  In accordance with EN 15102:2007 + A1:2011
- Meets California Section 01350 IAQ test requirements for wallcovering



PWA1701



PWA1702



PWA1703



PWA1704



PWA1705



PWA1706



PWA1707



PWA1708



PWA1709



PWA1710



PWA1711



PWA1712



PWA1713



PWA1714



PWA1715

SANDSCAPE

As we see hard lines give way to soft undulating curves, our new Sandscape design re-creates the pleasure we feel walking on the rolling sandy beaches or laying on our back while watching the clouds float across the sky, creating positive emotions.

SPECIFICATIONS & PROPERTIES

WEIGHT
20 oz. PLY / 620G/PLM 13.3 oz.

WIDTH
52" - 54" (132 - 137cm)

BACKING
Non woven

PATTERN MATCH
Straight Match

HORIZONTAL REPEAT
26.5"

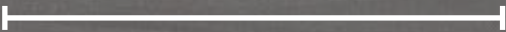
VERTICAL REPEAT
18"

Custom colors, weights, widths and microventing are available.

ENVIRONMENTAL & HEALTH

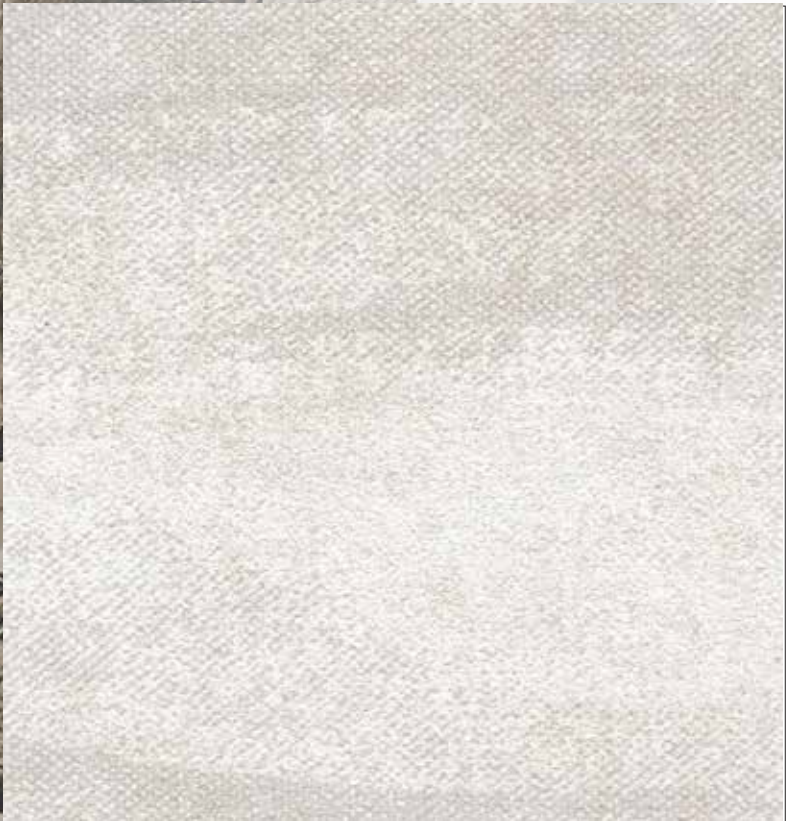
- **CE** In accordance with EN 15102:2007 + A1:2011
- Meets California Section 01350 IAQ test requirements for wallcovering

26.5"



18"





PWA1801



PWA1802



PWA1803



PWA1804



PWA1805



PWA1806



PWA1807



PWA1808



PWA1809



PWA1810



PWA1811

SHIBORI CHEVRON

Shibori Chevron takes inspiration from the Japanese dyeing technique Shibori. A burst of color in the oldest handcrafted indigo sets the tone for a vibrant palette enhanced by soft neutrals.

SPECIFICATIONS & PROPERTIES

WEIGHT
20 oz. PLY / 620G/PLM 13.3 oz.

WIDTH
52" - 54" (132 - 137cm)

BACKING
Woven

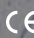
PATTERN MATCH
Straight Random

HORIZONTAL REPEAT
52"

VERTICAL REPEAT
18"

Custom colors, weights, widths and microventing are available.

ENVIRONMENTAL & HEALTH

-  In accordance with EN 15102:2007 + A1:2011
- Meets California Section 01350 IAQ test requirements for wallcovering





PWA1901



PWA1902



PWA1903



PWA1904



PWA1905



PWA1906



PWA1907



PWA1908



PWA1909



PWA1910

WANDER

Wander is a soft tonal pattern that brings nature indoors with its free-flowing movement. This pattern is available in neutral colors that fit today's interiors.

SPECIFICATIONS & PROPERTIES

WEIGHT
20 oz. PLY / 618G/PLM 13.3 oz.

WIDTH
52" - 54" (132 - 137cm)

BACKING
Woven


PATTERN MATCH
Straight Match

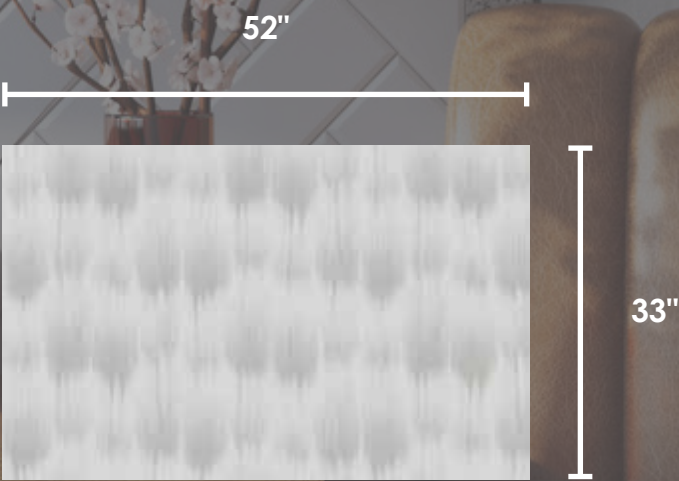
HORIZONTAL REPEAT
52"

VERTICAL REPEAT
33"

Custom colors, weights, widths and microventing are available.

ENVIRONMENTAL & HEALTH

-  In accordance with EN 15102:2007 + A1:2011
- Meets California Section 01350 IAQ test requirements for wallcovering





PWA2001



PWA2002



PWA2003



PWA2004



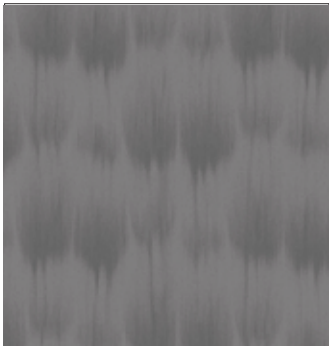
PWA2005



PWA2006



PWA2007



PWA2008



PWA2009



PWA2010

NIWA

Niwa, translated from the Japanese word meaning "garden", has a softened modern appeal. Created by the crossing repetitions of lines representing connectivity and a sanded surface texture, this design emulates a dry garden. The design elements encompass the meditative art forms of the culture. The color line speaks to the shades within the garden design.

SPECIFICATIONS & PROPERTIES

WEIGHT
20 oz. PLY / 618G/PLM 13.3 oz.

WIDTH
52" - 54" (132 - 137cm)

BACKING
Non woven


PATTERN MATCH
Straight Match

HORIZONTAL REPEAT
52"

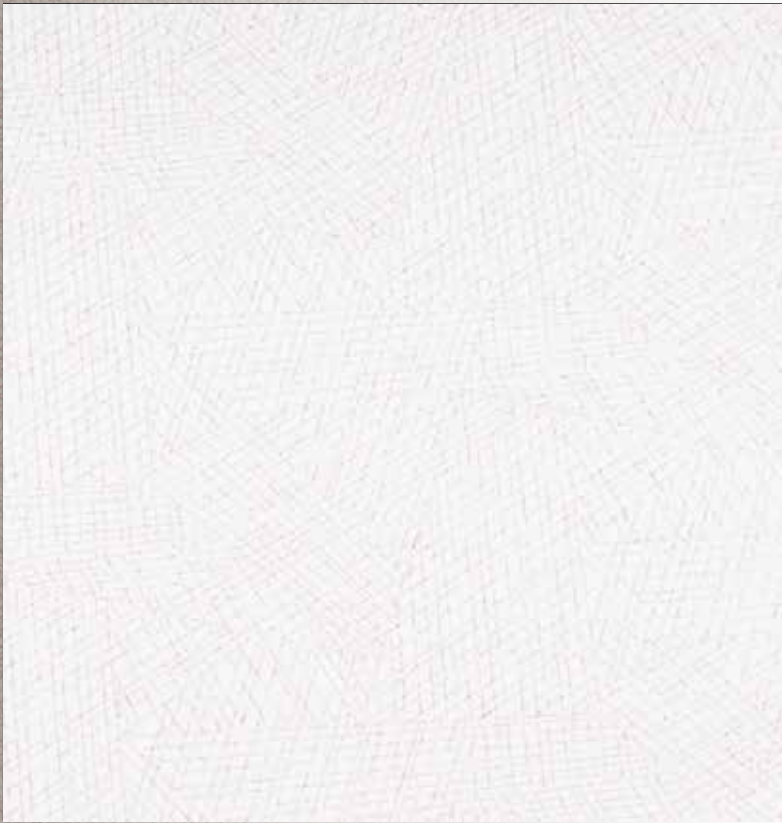
VERTICAL REPEAT
24"

Custom colors, weights, widths and microventing are available.

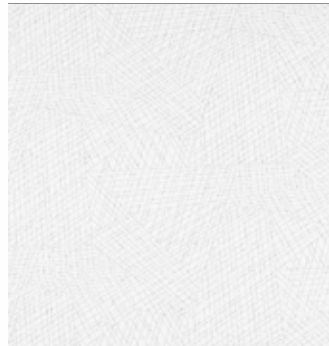
ENVIRONMENTAL & HEALTH

-  In accordance with EN 15102:2007 + A1:2011
- Meets California Section 01350 IAQ test requirements for wallcovering





PWA2101



PWA2102



PWA2103



PWA2104



PWA2105



PWA2106



PWA2107



PWA2108



PWA2109



PWA2110

OLIVER

Oliver is an intricate, woven design with a non-directional emboss that has a matte and satin contrast within the texture.

Available in bright whites, warm neutrals, and clean pops of color, Oliver coordinates beautifully with our new largescale geometric design, Harriet.

SPECIFICATIONS & PROPERTIES

WEIGHT

20 oz. PLY / 618G/PLM 13.3 oz.

WIDTH

52 - 54" (132 - 137cm)

BACKING

Woven

PATTERN MATCH

Straight Random

HORIZONTAL REPEAT


N.A.

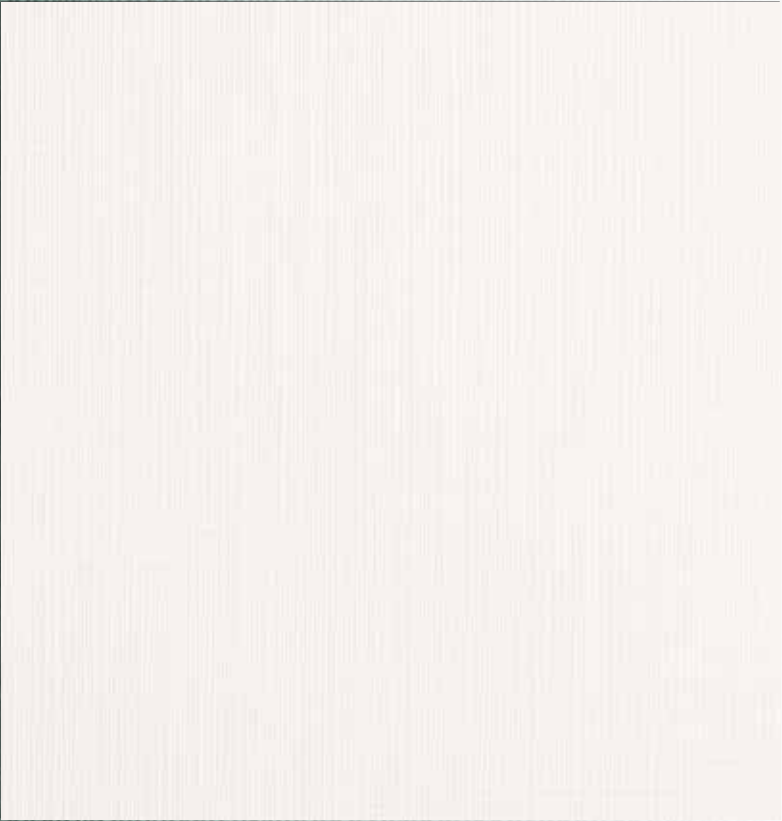
VERTICAL REPEAT

N.A.

Custom colors, weights, widths and microventing are available.

ENVIRONMENTAL & HEALTH

-  In accordance with EN 15102:2007 + A1:2011
- Meets California Section 01350 IAQ test requirements for wallcovering



PWA2201



PWA2202



PWA2203



PWA2204



PWA2205



PWA2206



PWA2207



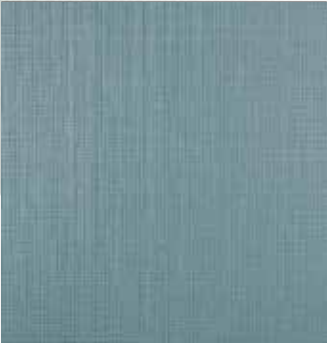
PWA2208



PWA2209



PWA2210



PWA2211



PWA2212



PWA2213

HILLSIDE

Hillside is a pattern created by contoured silhouettes. The rise and fall of the horizontal lines create the soft curves of a landscape or the calming waves of water.

Hillside's colorline includes soothing neutral and midtones, while diving deeper with its rich gold, cool blue, and lavish green, all inspired by many of the marvelous sights across the country.

SPECIFICATIONS & PROPERTIES

WEIGHT
20 oz. PLY / 618G/PLM 13.3 oz.

WIDTH
52" - 54" (132 - 137cm)

BACKING
Non woven


PATTERN MATCH
Straight Match

HORIZONTAL REPEAT
52"

VERTICAL REPEAT
24"

Custom colors, weights, widths and microventing are available.

ENVIRONMENTAL & HEALTH

-  In accordance with EN 15102:2007 + A1:2011
- Meets California Section 01350 IAQ test requirements for wallcovering





PWA2301



PWA2302



PWA2303



PWA2304



PWA2305



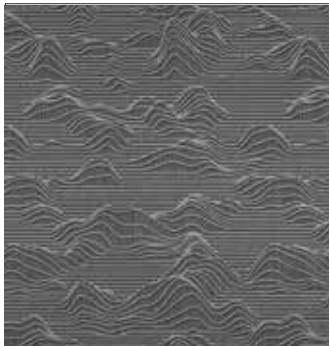
PWA2306



PWA2307



PWA2308



PWA2309

BENGAL

The art of handweaving is ancient and often begins with the woven fabrics created by twisting the cotton and silk fibers into yarns. The work and weaving knowledge in India passes from artisan to artisan for many generations stretching back thousands of years. Bengal, inspired by these techniques, is a chunky weave created by the depth of the emboss and enhanced by a cross woven print.

SPECIFICATIONS & PROPERTIES

WEIGHT

20 oz. PLY / 618G/PLM 13.3 oz.

WIDTH

52 - 54" (132 - 137cm)

BACKING

Woven

PATTERN MATCH

Straight Random

HORIZONTAL REPEAT


N.A.

VERTICAL REPEAT

N.A.

Custom colors, weights, widths and microventing are available.

ENVIRONMENTAL & HEALTH

-  In accordance with EN 15102:2007 + A1:2011
- Meets California Section 01350 IAQ test requirements for wallcovering



PWA2401



PWA2402



PWA2403



PWA2404



PWA2405



PWA2406



PWA2407



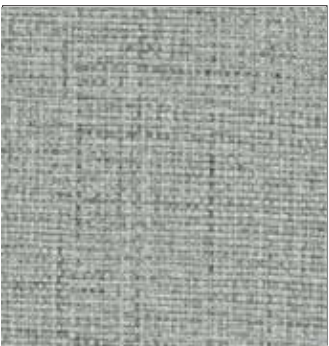
PWA2408



PWA2409



PWA2410



PWA2411



PWA2412



PWA2413



PWA2414



PWA2415

PARADOX

Paradox is an art deco inspired, mid-scale design combining soft curved shapes with sharp geometric elements.

The colors used in Paradox range from soft, tinted neutrals to rich, earthen colors with an artisanal influence. The use of metallic accents brings in a modern art deco renaissance.

SPECIFICATIONS & PROPERTIES

WEIGHT
20 oz. PLY / 620G/PLM 13.3 oz.

WIDTH
52 - 54" (132 - 137cm)

BACKING
Non woven


PATTERN MATCH
Straight Match

HORIZONTAL REPEAT
52"

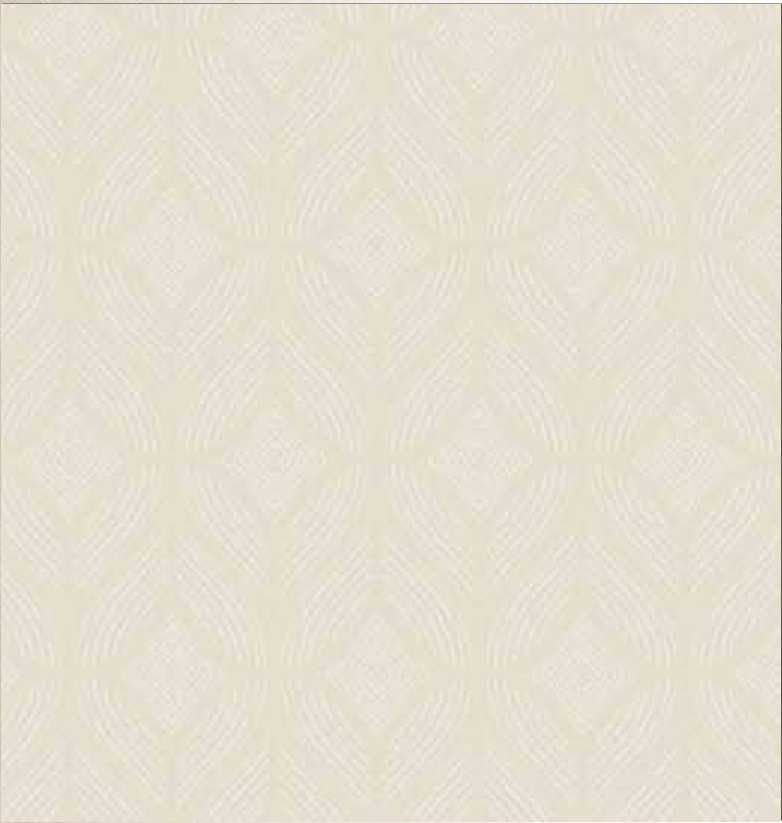
VERTICAL REPEAT
18"

Custom colors, weights, widths and microventing are available.

ENVIRONMENTAL & HEALTH

-  In accordance with EN 15102:2007 + A1:2011
- Meets California Section 01350 IAQ test requirements for wallcovering





PWA2501



PWA2502



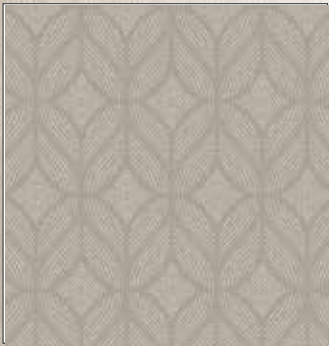
PWA2503



PWA2504



PWA2505



PWA2506



PWA2507



PWA2508



PWA2509



PWA2510



PWA2511



PWA2512



PWA2513

PREMIERWALL AZURITE INDEX

Page	Pattern No.	Pattern Name	Weight (oz)	Pattern Repeat		Pattern Match	Backing	Roll Size
				Horizontal	Vertical			
2 - 4	PWA0101 - PWA0120	LINDEN II	20	0"	0"	Straight Random	Woven	52" - 54" x 30yds
5 - 7	PWA0201 - PWA0221	KIMONO II	20	0"	0"	Reverse Random	Woven	52" - 54" x 30yds
8 - 10	PWA0301 - PWA0319	MARMORINO	20	53"	24"	Straight Match	Non-Woven	52" - 54" x 30yds
11 - 13	PWA0401 - PWA0420	ARLO	20	52"	18"	Straight Random	Non-Woven	52" - 54" x 30yds
14 - 15	PWA0501 - PWA0511	WHITE CREEK	20	0"	0"	Reverse Random	Woven	52" - 54" x 30yds
16 - 17	PWA0601 - PWA0614	THREADED	20	0"	0"	Reverse Random	Woven	52" - 54" x 30yds
18 - 19	PWA0701 - PWA0711	FLEUR	20	18"	18"	Straight Match	Non-Woven	52" - 54" x 30yds
20 - 22	PWA0801 - PWA0817	HIGHLANDER	20	0"	0"	Reverse Random	Non-Woven	52" - 54" x 30yds
23 - 25	PWA0901 - PWA0918	HARIRI	20	26"	18"	Straight Match	Non-Woven	52" - 54" x 30yds
26 - 27	PWA1001 - PWA1008	HARIRI STRIPE	20	52"	18"	Straight Match	Non-Woven	52" - 54" x 30yds
28 - 29	PWA1101 - PWA1113	CHATEAU	20	0"	0"	Reverse Random	Woven	52" - 54" x 30yds
30 - 31	PWA1201 - PWA1212	HARRIET	20	52"	24"	Straight Match	Non-Woven	52" - 54" x 30yds
32 - 33	PWA1301 - PWA1312	MILO	20	52"	33"	Straight Match	Non-Woven	52" - 54" x 30yds
34 - 36	PWA1401 - PWA1418	HOUSE OF TWEED	20	0"	0"	Reverse Random	Woven	52" - 54" x 30yds
37 - 39	PWA1501 - PWA1521	INTERLOOM	20	0"	0"	Reverse Random	Woven	52" - 54" x 30yds
40 - 41	PWA1601 - PWA1616	JENSEN	20	53"	18"	Straight Random	Non-Woven	52" - 54" x 30yds
42 - 43	PWA1701 - PWA1715	OTIS	20	0"	0"	Reverse Random	Woven	52" - 54" x 30yds
44 - 45	PWA1801 - PWA1811	SANDSCAPE	20	26.5"	18"	Straight Match	Non-Woven	52" - 54" x 30yds
46 - 47	PWA1901 - PWA1910	SHIBORI CHEVRON	20	52"	18"	Straight Random	Woven	52" - 54" x 30yds
48 - 49	PWA2001 - PWA2010	WANDER	20	52"	33"	Straight Match	Woven	52" - 54" x 30yds
50 - 51	PWA2101 - PWA2110	NIWA	20	52"	24"	Straight Match	Non-Woven	52" - 54" x 30yds
52 - 53	PWA2201 - PWA2213	OLIVER	20	0"	0"	Straight Random	Woven	52" - 54" x 30yds
54 - 55	PWA2301 - PWA2309	HILLSIDE	20	52"	24"	Straight Match	Non-Woven	52" - 54" x 30yds
56 - 57	PWA2401 - PWA2415	BENGAL	20	0"	0"	Straight Random	Woven	52" - 54" x 30yds
58 - 59	PWA2501 - PWA2513	PARADOX	20	52"	18"	Straight Match	Non-Woven	52" - 54" x 30yds

PREMIERWALL

AZURITE

2023-2027

Stay Connected - www.goodrichglobal.com | info@goodrichglobal.com



/Goodrich.Global.Singapore



/goodrich_global



/GoodrichGlobal



/goodrichglobal



/GoodrichGlobal



/goodrichglobal



/GoodrichGlobalOfficial

SINGAPORE [HQ] | MALAYSIA | THAILAND | VIETNAM | MYANMAR | INDIA | INDONESIA | UNITED ARAB EMIRATES | PHILIPPINES | CHINA | HONG KONG (CHINA)

Copyright © 2023 Goodrich Global. All rights reserved.