

HOMOGENEOUS VINYL SHEET FLOORING

2024 - 2026

ArmstrongFlooring™



Technical Specification

Characteristics	Standard	Unit	Result
Type of flooring	ISO 10581-EN 649		Homogeneous Sheet
Material			Polyvinyl Chloride
Coating			Diamond 10™
Safety criteria			
Flammability	EN 13501-1	class	Bfl - s1
Slip resistance	DIN 51130 / DIN EN 16165	group	R9
Dynamic coefficient of friction	EN 13893 / EN 14041	class	DS
Performance behaviour			
Sheet width	ISO 24341-EN 426	m	2
Sheet length	ISO 24341-EN 426	m	15/20
Overall thickness	ISO 24346-EN 428	mm	2.0
Wear layer thickness	ISO 24390-EN 429	mm	2.0
Total weight	ISO 23997-EN 430	kg/m ²	2.8
Wear resistance	EN 649	group	T
Binder content	EN ISO 10581	Type	Type I
Residual indentation	ISO 24343-1-EN 433	mm	0.03
Dimensional stability	ISO 23999-EN 434	-	X: < 0.4%; Y: < 0.4%
Impact sound insulation	EN ISO 717-2	dB	3
Color fastness	ISO 105-B02	rating	≥6
Resistance to staining	EN 423		No Stain 0
Static electrical properties	EN 1815	KV	≤2.0
Classification			
Domestic	ISO 10874-EN 685	class	23 heavy duty
Commercial	ISO 10874-EN 685	class	34 very heavy duty
Industrial	ISO 10874-EN 685	class	43 heavy duty



No high-risk carcinogens detected

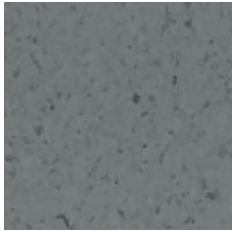


Release in 28 days
<5 µg/m³



HOMOGENEOUS VINYL SHEET

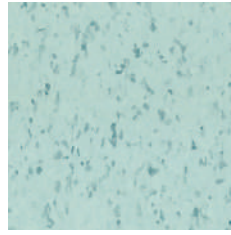
Starlux



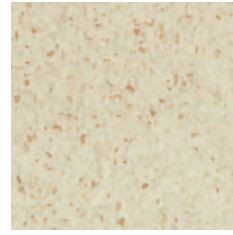
K825A-012 Black Star
WR: W825-012



K825A-609 Coast Blue
WR: W825-609



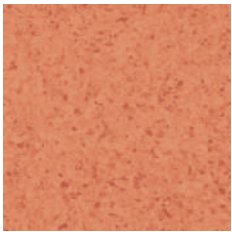
K825A-506 Neptune
WR: W825-506



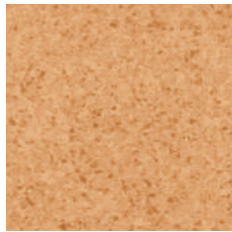
K825A-208 Marbling
WR: W825-208



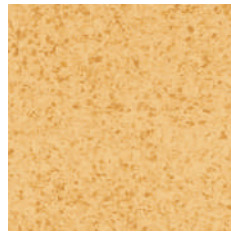
K825A-035 Midnight
WR: W825-035



K825A-438 Kermes
WR: W825-438



K825A-423 Tinoti
WR: W825-423



K825A-325 Plume Yellow
WR: W825-325

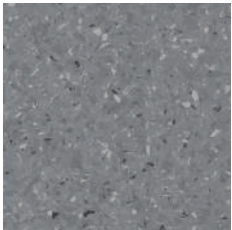


K825A-121 Fog Brown
WR: W825-121

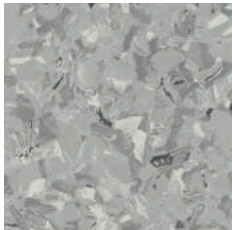


K825A-319 Softwood
WR: W825-319

Medintech Plus



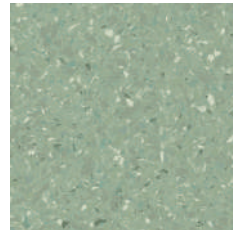
K811A-004 Rock
WR: W811-004



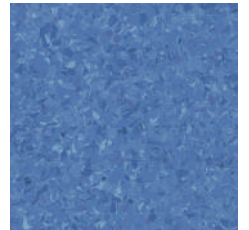
K811A-003 Smoke
WR: W811-003



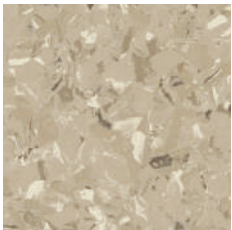
K811A-106 Freesia Pearl
WR: W811-001



K811A-524 Moss
WR: W811-524



K811A-533 Turquoise
WR: W811-533



K811A-214 Light Beige
WR: W841-208



K811A-211 Oatmeal
WR: W811-211



K811A-212 Carthamus Champagne
WR: W811-212



K811A-002 Silver Grey
WR: W811-002



K811A-331 Banana
WR: W811-331

ArmstrongFlooring™



Stay Connected www.goodrichglobal.com | info@goodrichglobal.com

 [/goodrich_global](https://www.instagram.com/goodrich_global)  [/goodrichglobal](https://www.pinterest.com/goodrichglobal)  [/Goodrich.Global.Singapore](https://www.facebook.com/Goodrich.Global.Singapore)

 [/Goodrich.Global](https://www.linkedin.com/company/Goodrich.Global)  [/goodrichglobal](https://www.tiktok.com/goodrichglobal)  [/GoodrichGlobalOfficial](https://www.youtube.com/GoodrichGlobalOfficial)

Copyright© 2024 Goodrich Global. All rights reserved.