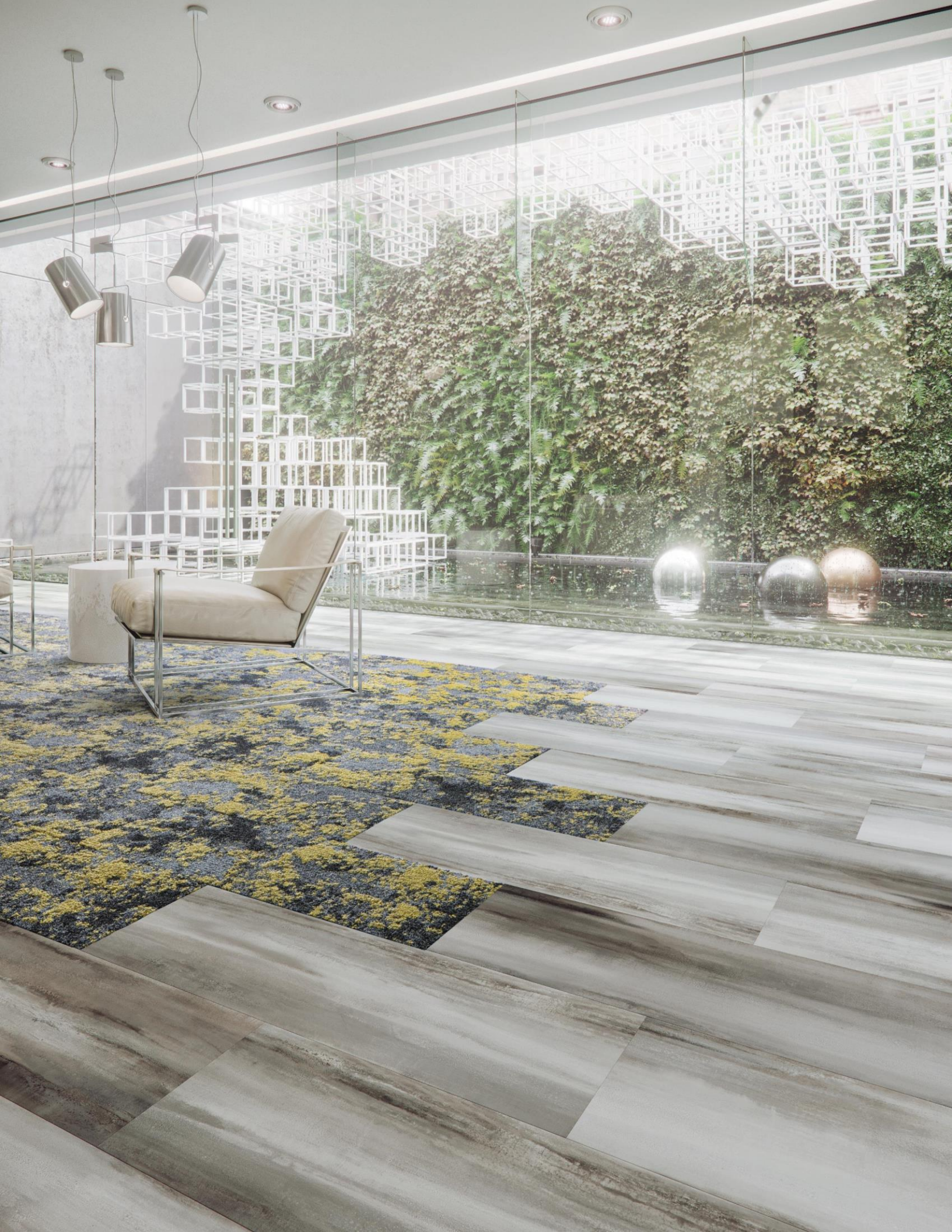


Mohawk Group

ERT CATALOG
CHINA MADE & STOCK ERT



BELIEVE IN BETTER™





















Collection	Product Type	Size (inches)	Size (cm)
Grainiac	glue down	6 X 48	15.24 cm x 121.92 cm
Matuto Plus Stone	glue down	12 x 24	30.48 cm x 60.96 cm
CUS. Terrazzo	glue down	18 X 36	45.72 cm x 91.44 cm
CUS. Woven	glue down	18 X 36	45.72 cm x 91.44 cm
Living Local Terrazzo	glue down	12 x 24	30.48 cm x 60.96 cm
Select Step II Wood	glue down	7.25 X 48	18.42 cm x 121.92 cm
Select Step II Stone	glue down	18 X 36	45.72 cm x 91.44 cm
Hit the Mark	glue down	12 x 24	30.48 cm x 60.96 cm
Hit the Mark	glue down	18 X 36	45.72 cm x 91.44 cm
Hit the Mark	glue down	7.25x 48	18.42 cm x 121.92 cm
Grown Up	looselay	9 X 59	22.86 cm x 149.86 cm
Secoya	looselay	9 X 59	22.86 cm x 149.86 cm
CUS. WOOD PATTERN	glue down	9 X 59	22.86 cm x 151.7 cm
Metal	looselay	18 X 36	45.72 cm x 91.44 cm
Bolder	looselay	36 X 36	91.44 cm x 91.44 cm
Lineate	looselay	9 X 59	22.86 mm x 149.86 mm
Better Together	glue down	12 x 36	30.48 cmX91.44 cm
Better Together	glue down	24 x 24	60.9 cmX60.9 cm
Better Together	glue down	4 x 36	10.16 cm x 91.44 cm
Better Together	glue down	8 x 48	20.3 cm X 121.92 cm
Molveno	rigid & click	7.75 x 59.75	19.685 cm x 151.7 cm
Molveno	rigid & click	11.75 x 35.75	29.845 cm x 90.805 cm
Prizefighter	rigid & click	7X48	17.78 cm x 121.92 cm



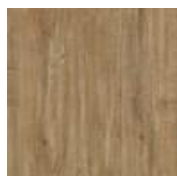
111
Northern Whites



132
Hayday



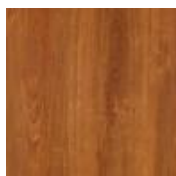
143
Beech Blonde



328
Rusticated



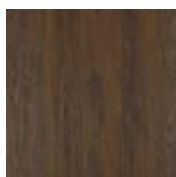
332
Carmello



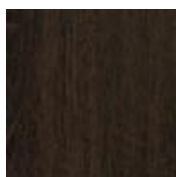
343
Cherrytale



362
Red My Mind



873
Safe Arbor



883
Brownie Points



921
Shore Thing



933
Silver Fox



959
Grey Matters

DESIGN

Product Type:	Glue Down LVT
Gauge:	.10" (2.5mm)
Wear Layer:	12 mil (0.3mm)
Finish:	M-Force Enhanced Urethane
Surface Profile:	Wood Emboss
Size:	6" W x 48" L (152.4 mm x 1219.2 mm)
Square Feet Per Carton:	36 sf/ctn (3.34 m ² /ctn)
Pieces Per Carton:	18 pcs/ctn
Pounds per carton:	34.17 lbs/ctn (15.49 kg/ctn)
Installation Method:	Glue Down
Recommended Adhesive:	Mohawk M95.0 Resilient Flooring Adhesive, MS160 Spray, M700 Pressure Sensitive Adhesive
Underlayment:	Mohawk Accusound

PERFORMANCE

Construction:	Light Commercial Grade Resilient Tile
Classification:	ASTM F1700 - Class III, Type A - Smooth, Type B - Embossed
Squareness:	ASTM F2055 - Passes - ±0.010 in. max
Size and Tolerance:	ASTM F2055 - Passes - ±0.024 in. per linear foot
Thickness:	ASTM F386 - Passes - ±0.005 in.
Flexibility:	ASTM F137 - Passes - ≤ 1.0 in., no cracks or breaks
Dimensional Stability:	ASTM F2199 - Passes - 6hrs@180F, 0.12%
Static Load:	ASTM F970 - Passes, modified - 1500 psi
Residual Indentation:	ASTM F1914 - Passes - Average less than 8%
Slip Resistant:	ASTM D2047 - Passes - > 0.6 Wet, 0.6 Dry
Resistance To Chemicals:	ASTM F925 - Passes - No Change or Slight Change
Resistance To Light:	ASTM F1515 - Passes - ΔE ≤ 8
Resistance To Heat:	ASTM F1514 - Passes - ΔE ≤ 8
Critical Radiant Flux:	ASTM E648 - Passes - ≥ 0.45 watts/cm ² , Class 1
Smoke Density:	ASTM E662 - Passes

SUSTAINABILITY

Certification:	FloorScore® certified
----------------	-----------------------

SERVICE

Warranties:	Limited 20 Year Commercial
-------------	----------------------------





DESIGN

Product Type:	Glue Down LVT
Overall Thickness:	1" (2.5 mm)
Wear Layer:	20 mil (0.5 mm)
Finish:	M-Force Ultra
Size:	304.8mm x 609.6mm (actual) 12"W x 24"L (nominal)
Square Feet Per Carton:	36 sf/ctn (3.34m ² /ctn)
Pieces Per Carton:	18 pieces/ctn
Pounds Per Carton:	29.9 lbs/ctn
Installation Method:	Glue Down
Recommended Adhesive:	M95.0 Resilient Flooring Adhesive, M99 Resilient Flooring Adhesive, or M700 Adhesive

SUSTAINABILITY

Certification:	FloorScore® certified
Virgin Vinyl:	Yes

PERFORMANCE

Construction:	Commercial Grade Luxury Vinyl Tile
Classification:	ASTM F1700 - Class III, Type A - Smooth, Type B - Embossed
Squareness:	ASTM F2421 - Passes - $\pm 0.10"$ max
Size And Tolerance:	ASTM F2055 - Passes - ± 0.016 in. per linear foot
Thickness:	ASTM F386 - Passes - as specified $\pm 0.005"$
Flexibility:	ASTM F137 - Passes - 1" mandrel
Dimensional Stability:	ASTM F2199 - Passes - 0.020"/linear foot max
Static Load:	ASTM F970 - Passes - modified at 1500 psi
Residual Indentation:	ASTM F1914 - Passes - Average less than 8%, maximum single reading 10%
Resistance To Chemicals:	ASTM F925 - Passes - No more than a slight change
Resistance To Light:	ASTM F1515 - Passes - $\Delta E < 8$
Resistance To Heat:	ASTM F1514 - Passes - $\Delta E < 8$
Critical Radiant Flux:	ASTM E648 - Passes - > 0.45 watts/cm ² , Class 1
Smoke Density:	ASTM E662 Part A - Less than 450

SERVICE

Warranties:	Limited 20 Year Wear Warranty
-------------	-------------------------------



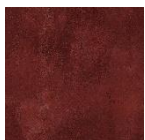
123A
Barely Beige Stone



131A
Lemon Twist Stone



252A
Outrageous Orange



353A
Red Hot Stone



454A
Wizard Stone



555A
Blue Night



556A
Mega Blue Stone



599A
Deep Sea Stone



646A
Green Grass Stone



656A
Botany Stone



752A
Nutshell Stone



858A
Bronze Blast Stone



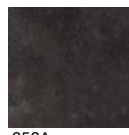
915A
Frostbite Stone



926A
Agreeable Grey Stone

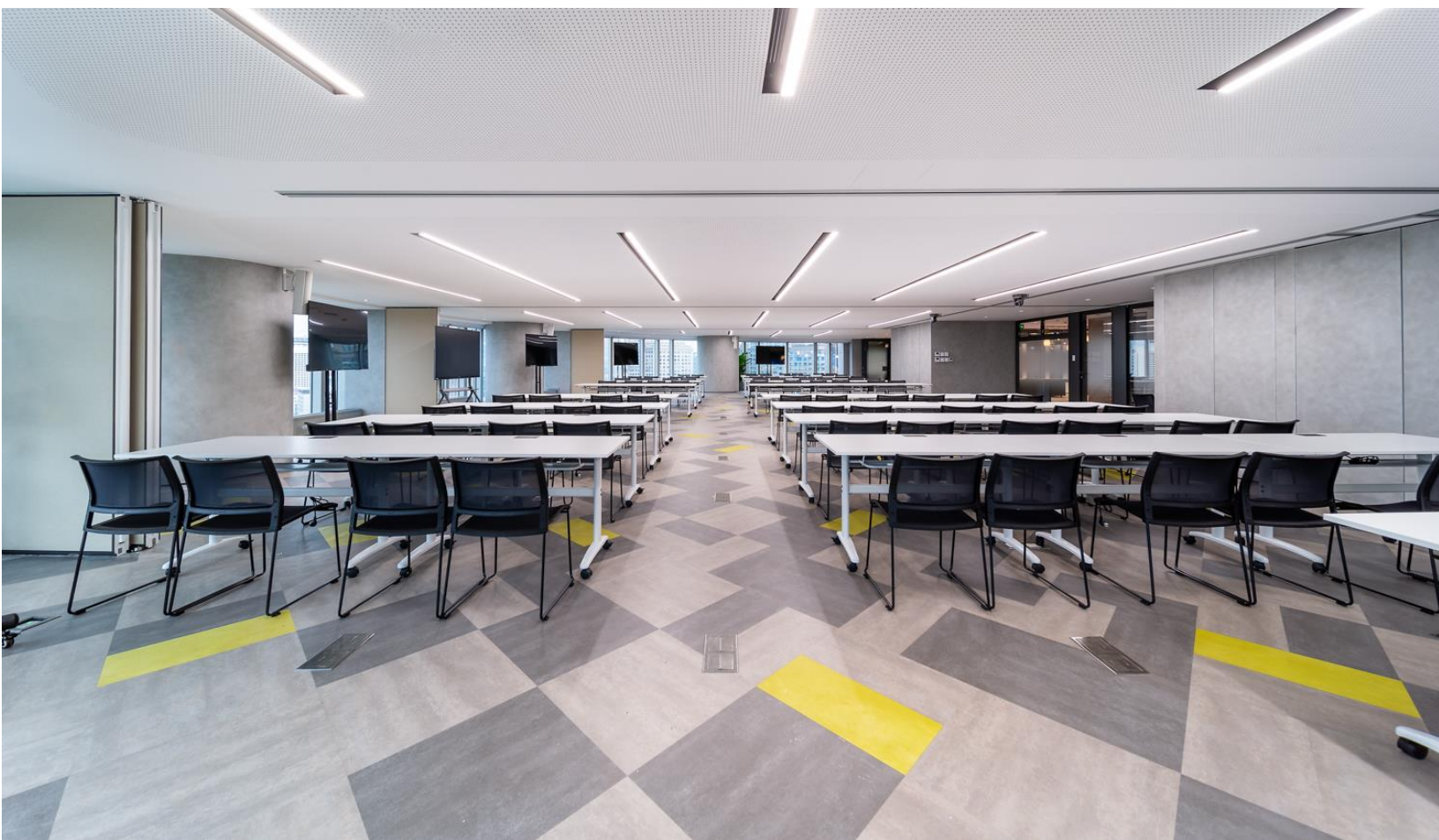


927A
Sonic Silver Stone



959A
Grey Granite Stone







MG0007-2
Light Grey



MG0007-3
Mid Grey



MG0007-12
Dark Grey

DESIGN

Product Type:	Glue Down LVT
Gauge:	.10" (2.5mm)
Wear Layer:	12 mil (0.3mm)
Finish:	M-Force Enhanced Urethane
Surface Profile:	Wood Emboss
Size:	18" W x 36" L (45.72 mm x 91.44 mm)
Square Feet Per Carton:	36 sf/ctn (3.34 m ² /ctn)
Pieces Per Carton:	8 pcs/ctn
Pounds per carton:	34.17 lbs/ctn (15.49 kg/ctn)
Installation Method:	Glue Down
Recommended Adhesive:	Mohawk M95.0 Resilient Flooring Adhesive, MS160 Spray, M700 Pressure Sensitive Adhesive
Underlayment:	Mohawk Accusound

PERFORMANCE

Construction:	Light Commercial Grade Resilient Tile
Classification:	ASTM F1700 - Class III, Type A - Smooth, Type B - Embossed
Squareness:	ASTM F2055 - Passes - ± 0.010 in. max
Size and Tolerance:	ASTM F2055 - Passes - ± 0.024 in. per linear foot
Thickness:	ASTM F386 - Passes - ± 0.005 in.
Flexibility:	ASTM F137 - Passes - ≤ 1.0 in., no cracks or breaks
Dimensional Stability:	ASTM F2199 - Passes - 6hrs@180F, 0.12%
Static Load:	ASTM F970 - Passes, modified - 1500 psi
Residual Indentation:	ASTM F1914 - Passes - Average less than 8%
Slip Resistant:	ASTM D2047 - Passes - > 0.6 Wet, 0.6 Dry
Resistance To Chemicals:	ASTM F925 - Passes - No Change or Slight Change
Resistance To Light:	ASTM F1515 - Passes - $\Delta E \leq 8$
Resistance To Heat:	ASTM F1514 - Passes - $\Delta E \leq 8$
Critical Radiant Flux:	ASTM E648 - Passes - ≥ 0.45 watts/cm ² , Class 1
Smoke Density:	ASTM E662 - Passes

SUSTAINABILITY

Certification:	FloorScore® certified
----------------	-----------------------

SERVICE

Warranties:	Limited 20 Year Commercial
-------------	----------------------------





MG7001-1



MG7001-2



MG7001-4



MG7001-5



MG7001-6



MG7001-7



MG7001-9



MG7001-D04



MG7001-D05

DESIGN

Product Type:	Glue Down LVT
Gauge:	.10" (2.5mm)
Wear Layer:	12 mil (0.3mm)
Finish:	M-Force Enhanced Urethane
Surface Profile:	Wood Emboss
Size:	18" W x 36" L (45.72 mm x 91.44 mm)
Square Feet Per Carton:	36 sf/ctn (3.34 m ² /ctn)
Pieces Per Carton:	8 pcs/ctn
Pounds per carton:	34.17 lbs/ctn (15.49 kg/ctn)
Installation Method:	Glue Down
Recommended Adhesive:	Mohawk M95.0 Resilient Flooring Adhesive, MS160 Spray, M700 Pressure Sensitive Adhesive
Underlayment:	Mohawk Accusound

PERFORMANCE

Construction:	Light Commercial Grade Resilient Tile
Classification:	ASTM F1700 - Class III, Type A - Smooth, Type B - Embossed
Squareness:	ASTM F2055 - Passes - ± 0.010 in. max
Size and Tolerance:	ASTM F2055 - Passes - ± 0.024 in. per linear foot
Thickness:	ASTM F386 - Passes - ± 0.005 in.
Flexibility:	ASTM F137 - Passes - ≤ 1.0 in., no cracks or breaks
Dimensional Stability:	ASTM F2199 - Passes - 6hrs@180F, 0.12%
Static Load:	ASTM F970 - Passes, modified - 1500 psi
Residual Indentation:	ASTM F1914 - Passes - Average less than 8%
Slip Resistant:	ASTM D2047 - Passes - > 0.6 Wet, 0.6 Dry
Resistance To Chemicals:	ASTM F925 - Passes - No Change or Slight Change
Resistance To Light:	ASTM F1515 - Passes - $\Delta E \leq 8$
Resistance To Heat:	ASTM F1514 - Passes - $\Delta E \leq 8$
Critical Radiant Flux:	ASTM E648 - Passes - ≥ 0.45 watts/cm ² , Class 1
Smoke Density:	ASTM E662 - Passes

SUSTAINABILITY

Certification:	FloorScore® certified
----------------	-----------------------

SERVICE

Warranties:	Limited 20 Year Commercial
-------------	----------------------------







DESIGN

Product Type:	Glue Down LVT
Gauge:	.10" (2.5mm)
Wear Layer:	12 mil (0.3mm)
Finish:	M-Force Enhanced Urethane
Surface Profile:	Wood Emboss
Size:	12" W x 24" L (30.4 mm x 60.9 mm)
Square Feet Per Carton:	36 sf/ctn (3.34 m ² /ctn)
Pieces Per Carton:	18 pcs/ctn
Pounds per carton:	34.17 lbs/ctn (15.49 kg/ctn)
Installation Method:	Glue Down
Recommended Adhesive:	Mohawk M95.0 Resilient Flooring Adhesive, MS160 Spray, M700 Pressure Sensitive Adhesive
Underlayment:	Mohawk Accusound

PERFORMANCE

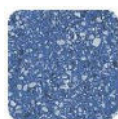
Construction:	Light Commercial Grade Resilient Tile
Classification:	ASTM F1700 - Class III, Type A - Smooth, Type B - Embossed
Squareness:	ASTM F2055 - Passes - ± 0.010 in. max
Size and Tolerance:	ASTM F2055 - Passes - ± 0.024 in. per linear foot
Thickness:	ASTM F386 - Passes - ± 0.005 in.
Flexibility:	ASTM F137 - Passes - ≤ 1.0 in., no cracks or breaks
Dimensional Stability:	ASTM F2199 - Passes - 6hrs@180F, 0.12%
Static Load:	ASTM F970 - Passes, modified - 1500 psi
Residual Indentation:	ASTM F1914 - Passes - Average less than 8%
Slip Resistant:	ASTM D2047 - Passes - > 0.6 Wet, 0.6 Dry
Resistance To Chemicals:	ASTM F925 - Passes - No Change or Slight Change
Resistance To Light:	ASTM F1515 - Passes - $\Delta E \leq 8$
Resistance To Heat:	ASTM F1514 - Passes - $\Delta E \leq 8$
Critical Radiant Flux:	ASTM E648 - Passes - ≥ 0.45 watts/cm ² , Class 1
Smoke Density:	ASTM E662 - Passes

SUSTAINABILITY

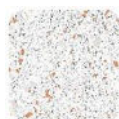
Certification:	FloorScore® certified
----------------	-----------------------

SERVICE

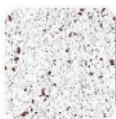
Warranties:	Limited 20 Year Commercial
-------------	----------------------------



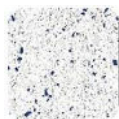
585
Mascalì



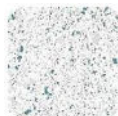
722
Mercato



723
Vesuvius



725
Randazzo



726
Massina



727
Tephra



736
Strabe



826
Catania



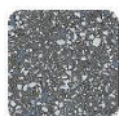
848
Mongibello



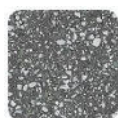
939
Linosa



982
Basal



985
Somma



986
Lahar



989
Valle De Bove





Select Step II Collection


S719
Concrete Goals



S818
Nature's Influence



S878
Clean Slate



S929
Riverside



S939
Stone Cold



S945
Stepping Stone



S948
On the Rocks



S959
Taken for Granite

DESIGN

Product Type:	Glue Down LVT
Overall Thickness:	3 mm (.12")
Wear Layer:	20 mil (0.5 mm)
Finish:	M-Force™ Enhanced Urethane
Edge Profile:	Microbevel
Size:	457.2mm x 914.4mm (actual) 18" W x 36" L (nominal)
Square Feet Per Carton:	36 sf/ctn
Pieces Per Carton:	8 pieces /ctn
Pounds per carton:	42 lbs/ctn
Installation Method:	Glue Down
Recommended Adhesive:	M95.0 Resilient Flooring Adhesive, M99 Resilient Flooring Adhesive, or M700 Adhesive

PERFORMANCE

Construction:	Commercial Grade Enhanced Dryback Resilient Tile
Classification:	ASTM F1700 - Class III, Type A - Smooth, Type B - Embossed
Squareness:	ASTM F 2421 - Passes - ± 0.10 " max
Size and Tolerance:	ASTM F2421 - Passes - ± 0.016 "/linear foot
Thickness:	ASTM F386 - Passes - as specified ± 0.005 "
Flexibility:	ASTM F137 - Passes - 1" mandrel
Dimensional Stability:	ASTM F2199 - Passes - 0.020"/linear foot max
Static Load:	ASTM F970 - Passes, modified at 1000 psi
Residual Indentation:	ASTM F1914 - Passes - Average less than 8% maximum single reading 10%
Resistance To Chemicals:	ASTM F1914 - Passes - Average less than 8% maximum single reading 10%
Resistance To Light:	ASTM F1515 - Passes - E <8
Resistance To Heat:	ASTM F1514 - Passes - E <8
Critical Radiant Flux:	ASTM E648 - Class 1(>0.45 W/cm2)
Smoke Density:	ASTM E662 Part A - Less than 450

SUSTAINABILITY

Certification:	FloorScore® certified
----------------	-----------------------

SERVICE

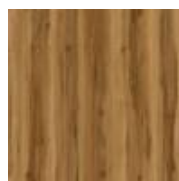
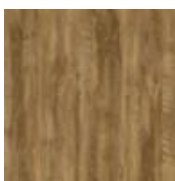
Warranties:	Limited 20 Year Commercial
-------------	----------------------------



Select Step II Collection

W729
Luxe

W731
Caramel

W738
Ice Dreams

W833
Vein Narrative

W838
Rustic Elegance

W853
Warmth

W858
Safe-Haven

W859
Cozy

W863
Heirloom

DESIGN

Product Type:	Glue Down LVT
Overall Thickness:	3 mm (.12")
Wear Layer:	20 mil (0.5 mm)
Finish:	M-Force™ Enhanced Urethane
Edge Profile:	Microbevel
Size:	184.15mm x 1219.2mm (actual) 7.25" W x 48" L (nominal)
Square Feet Per Carton:	36.25 sf/ctn
Pieces Per Carton:	15 pieces /ctn
Pounds per carton:	42.3 lbs/ctn
Installation Method:	Glue Down
Recommended Adhesive:	M95.0 Resilient Flooring Adhesive, M99 Resilient Flooring Adhesive, or M700 Adhesive

PERFORMANCE

Construction:	Commercial Grade Enhanced Dryback Resilient Tile
Classification:	ASTM F1700 - Class III, Type A - Smooth, Type B - Embossed
Squareness:	ASTM F 2421 - Passes - ±0.10" max
Size and Tolerance:	ASTM F2421 - Passes - ±0.016"/linear foot
Thickness:	ASTM F386 - Passes - as specified ±0.005"
Flexibility:	ASTM F137 - Passes - 1" mandrel
Dimensional Stability:	ASTM F2199 - Passes - 0.020"/linear foot max
Static Load:	ASTM F970 - Passes, modified at 1000 psi
Residual Indentation:	ASTM F1914 - Passes - Average less than 8% maximum single reading 10%
Resistance To Chemicals:	ASTM F1914 - Passes - Average less than 8% maximum single reading 10%
Resistance To Light:	ASTM F1515 - Passes - E <8
Resistance To Heat:	ASTM F1514 - Passes - E <8
Critical Radiant Flux:	ASTM E648 - Class 1(>0.45 W/cm2)
Smoke Density:	ASTM E662 Part A - Less than 450

SUSTAINABILITY

Certification:	FloorScore® certified
----------------	-----------------------

SERVICE

Warranties:	Limited 20 Year Commercial
-------------	----------------------------





DESIGN

Product Type:	Glue Down LVT
Gauge:	.12" (3mm)
Wear Layer:	30 mil (0.7mm)
Finish:	M-Force Enhanced Urethane
Size:	12" W x 24" L (304.5mm x 609mm)
Square Feet Per Carton:	36 sf/ctn (3.34m ² /ctn)
Pieces Per Carton:	18 pcs/ctn
Pounds per carton:	38.35 lbs/ctn (17.37 kg/ctn)
Installation Method:	Glue Down
Recommended Adhesive:	MS160 Spray Adhesive, M95.0 Resilient Flooring Adhesive, M700 Pressure Sensitive Adhesive

PERFORMANCE

Construction:	Commercial Grade Enhanced Resilient Tile
Classification:	ASTM F1700 - Class III, Type A - Smooth, Type B - Embossed
Squareness:	ASTM F2055/F2421 - Passes - 0.10" max
Size and Tolerance:	ASTM F2055/F2421 - Passes - ±0.16"/linear foot
Thickness:	ASTM F386 - Passes - as specified ±0.005"
Flexibility:	ASTM F137 - Passes - 1" mandrel
Dimensional Stability:	ASTM F2199 - Passes - ≤ 0.020"/linear foot
Static Load:	ASTM F970 - Passes, modified at 1500 psi
Residual Indentation:	ASTM F1914 - Passes - Average less than 8%, maximum single reading 10%
Slip Resistant:	ASTM C1028 - Passes - Wet: ≥ 0.5
Resistance To Chemicals:	ASTM F925 - Passes - No more than a slight change
Resistance To Light:	ASTM F1515 - Passes - ΔE ≤ 8
Resistance To Heat:	ASTM F1514 - Passes - ΔE ≤ 8
Critical Radiant Flux:	ASTM E648 - Passes - Class 1(>0.45 W/cm ²)
Smoke Density:	ASTM E662 Part A - Less than 450

SUSTAINABILITY

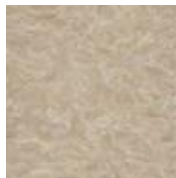
Certification:	FloorScore® certified
----------------	-----------------------

SERVICE

Warranties:	Limited 20 Year Commercial
-------------	----------------------------



651
Strike



938
The Mark



955
Grade



965
Avail





DESIGN

Product Type:	Glue Down LVT
Gauge:	.12" (3mm)
Wear Layer:	30 mil (0.7mm)
Finish:	M-Force Enhanced Urethane
Size:	18" W x 36" L (457.2mm x 914.4mm)
Square Feet Per Carton:	36 sf/ctn (3.34m ² /ctn)
Pieces Per Carton:	12 pcs/ctn
Pounds per carton:	38.36 lbs/ctn (17.34 kg/ctn)
Installation Method:	Glue Down
Recommended Adhesive:	M5160 Spray Adhesive, M95.0 Resilient Flooring Adhesive, M700 Pressure Sensitive Adhesive

PERFORMANCE

Construction:	Commercial Grade Enhanced Resilient Tile
Classification:	ASTM F1700 - Class III, Type A - Smooth, Type B - Embossed
Squareness:	ASTM F2055/F2421 - Passes - 0.10" max
Size and Tolerance:	ASTM F2055/F2421 - Passes - ±0.16"/linear foot
Thickness:	ASTM F386 - Passes - as specified ±0.005"
Flexibility:	ASTM F137 - Passes - 1" mandrel
Dimensional Stability:	ASTM F2199 - Passes - ≤ 0.020"/linear foot
Static Load:	ASTM F970 - Passes, modified at 1500 psi
Residual Indentation:	ASTM F1914 - Passes - Average less than 8%, maximum single reading 10%
Slip Resistant:	ASTM C1028 - Passes - Wet: ≥ 0.5
Resistance To Chemicals:	ASTM F925 - Passes - No more than a slight change
Resistance To Light:	ASTM F1515 - Passes - ΔE ≤ 8
Resistance To Heat:	ASTM F1514 - Passes - ΔE ≤ 8
Critical Radiant Flux:	ASTM E648 - Passes - Class 1(>0.45 W/cm ²)
Smoke Density:	ASTM E662 Part A - Less than 450

SUSTAINABILITY

Certification:	FloorScore® certified
----------------	-----------------------

SERVICE

Warranties:	Limited 20 Year Commercial
-------------	----------------------------



721
Accomplish



936
Accurate



946
Online



968
Success





DESIGN

Product Type:	Glue Down LVT
Gauge:	.12" (3mm)
Wear Layer:	30 mil (0.7mm)
Finish:	M-Force Enhanced Urethane
Size:	7.25" W x 48" L (184 mm x 1218 mm)
Square Feet Per Carton:	38.67 sf/ctn (3.56 m2/ctn)
Pieces Per Carton:	16 pcs/ ctn
Pounds per carton:	41.2 lbs/ctn (18.67 m2/ctn)
Installation Method:	Glue Down
Recommended Adhesive:	MS160 Spray Adhesive, M95.0 Resilient Flooring Adhesive, M700 Pressure Sensitive Adhesive

PERFORMANCE

Construction:	Commercial Grade Enhanced Resilient Tile
Classification:	ASTM F1700 - Class III, Type A - Smooth, Type B - Embossed
Squareness:	ASTM F2055/F2421 - Passes - 0.10" max
Size and Tolerance:	ASTM F2055/F2421 - Passes - ±0.16"/linear foot
Thickness:	ASTM F386 - Passes - as specified ±0.005"
Flexibility:	ASTM F137 - Passes - 1" mandrel
Dimensional Stability:	ASTM F2199 - Passes - ≤ 0.020"/linear foot
Static Load:	ASTM F970 - Passes, modified at 1500 psi
Residual Indentation:	ASTM F1914 - Passes - Average less than 8%, maximum single reading 10%
Slip Resistant:	ASTM C1028 - Passes - Wet: ≥ 0.5
Resistance To Chemicals:	ASTM F925 - Passes - No more than a slight change
Resistance To Light:	ASTM F1515 - Passes - ΔE ≤ 8
Resistance To Heat:	ASTM F1514 - Passes - ΔE ≤ 8
Critical Radiant Flux:	ASTM E648 - Passes - Class 1 (>0.45 W/cm2)
Smoke Density:	ASTM E662 Part A - Less than 450

SUSTAINABILITY

Certification:	FloorScore® certified
----------------	-----------------------

SERVICE

Warranties:	Limited 20 Year Commercial
-------------	----------------------------



241
Make It



262
Precise



852
Target



862
Exact



937
Deliver



941
Focus



956
Jackpot



978
Score



979
Aim



751
Prevail



Hot and Heavy Collection

132
Vera

138
Kingsley

241
Knox

322
Finn

358
Jackson

628
Lenox

758
Hermes

851
Butler

853
Emerson

958
Cole

DESIGN

Product Type:	Floating LVT
Gauge:	.20"(5mm)
Wear Layer:	20 mil (0.5mm)
Finish:	M-Force™ Enhanced Urethane
Surface Profile:	Registered Emboss
Size:	9" x 59" (228 mm x 1498 mm)
Square Feet Per Carton:	22.4 sf/ctn (2.12 m2/ctn)
Pieces Per Carton:	6 pcs/ctn
Pounds per carton:	40.78 lbs/ctn (18.49 kg/ctn)
Installation Method:	Perimeter Glue
Recommended Adhesive:	Perimeter glue only with MS160 Spray. May also use M95.0 Resilient Flooring Adhesive

PERFORMANCE

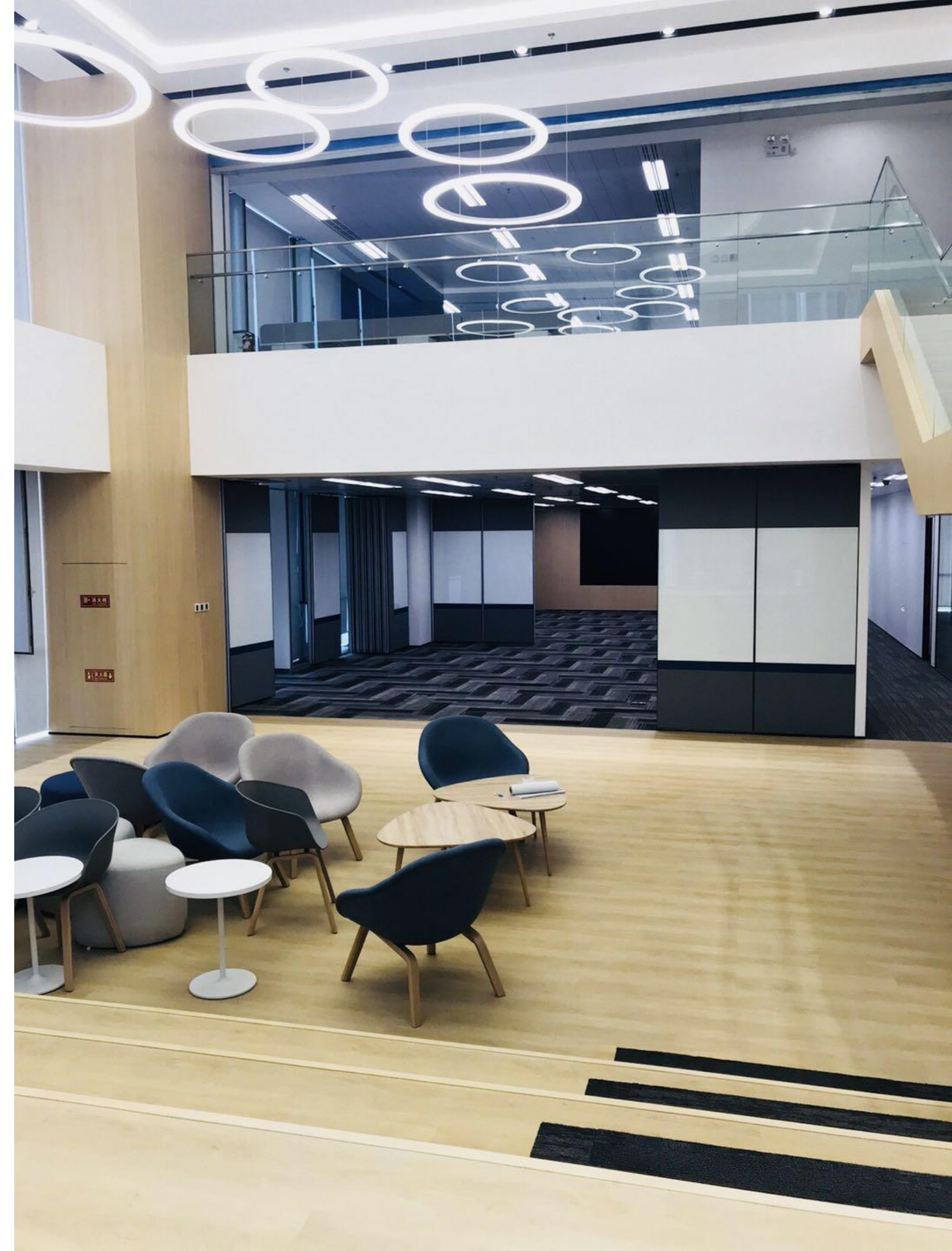
Construction:	Luxury Vinyl Tile with underlay
Classification:	ASTM F-1700 - Class III, Type A - Smooth, Type B - Embossed
Squareness:	ASTM F2055 -10 Passes - maximum 0.010 in. (0.25mm)
Size and Tolerance:	ASTM F2055 - Passes - at ±0.016 in./lin. Ft. (0.4 mm/305 mm)
Thickness:	ASTM F386 - Passes - as specified ±0.005 in. (0.13 mm)
Flexibility:	ASTM F137 - Passes - 1in. (25.4-mm mandrel, no crack or break)
Dimensional Stability:	ASTM F2199 - Passes - no greater than 0.020 in./lin. Ft. (0.51 mm/305 mm)
Static Load:	ASTM F970 - Passes - Exceeds 250 psi
Residual Indentation:	ASTM F1914 - Passes - average less than 8%
Slip Resistant:	ADA Compliant - > 0.6
Resistance To Chemicals:	ASTM F925 - Passes - no change
Resistance To Light:	ASTM F1515 - Passes - less than 8 ave., max
Resistance To Heat:	ASTM F1514 - Passes - less than 8 ave., max
Critical Radiant Flux:	ASTM E648 - Passes - > 0.45 watts/cm², Class 1
Impact Insulation Class:	57

SUSTAINABILITY

Certification:	FloorScore® certified
----------------	-----------------------

SERVICE

Warranties:	Limited 20 Year Commercial
-------------	----------------------------





CHINA STOCK



	123 Benmore
	142 Kew Gardens
	148 Atwell Mill
	152 Arrowhead Creek
	333 Redwood
	352 Sierra
	833 Oakbark
	872 Picton Park
	936 Converse Basin
	945 Alder Creek
	989 Calaveras

DESIGN

Product Type:	Floating LVT
Gauge:	.20"(5mm)
Wear Layer:	20 mil (0.5mm)
Finish:	M-Force Enhanced Urethane
Surface Profile:	Wood Emboss; Light Emboss
Edge Profile:	Bevel
Size:	9"W x 59"L (228.4mm x 1497.1mm)
Square Feet Per Carton:	22.84 sf/ctn (2.12 m ² /ctn)
Pieces Per Carton:	6 pieces/ctn
Pounds per carton:	40.78 lbs/ctn (18.49 kg/ctn)
Installation Method:	Loose Lay with Perimeter Glue
Recommended Adhesive:	MS160 Spray Adhesive or M95.0 Resilient Flooring Adhesive

PERFORMANCE

Construction:	Commercial Grade Loose Lay Enhanced Resilient Tile
Classification:	ASTM F1700 - Class III, Type A - Smooth, Type B - Embossed
Squareness:	ASTM 2421/ASTM F2055 - Passes - ± 0.10 in. max
Size and Tolerance:	ASTM 2421/ASTM F2055 - Passes - ± 0.16 in. per linear foot
Thickness:	ASTM F386 - Passes - as specified ± 0.005 in.
Flexibility:	ASTM F137 - Passes - 1" mandrel
Dimensional Stability:	ASTM F2199 - Passes - 0.020 in. per linear foot
Static Load:	ASTM F970 - Passes, modified - 1000 psi
Residual Indentation:	ASTM F1914 - Passes - Average less than 8%, maximum single read 10%
Slip Resistant:	ASTM D2047 - Passes Wet: ≥ 0.5
Resistance To Chemicals:	ASTM F925 - Passes - No Change or Slight Change
Resistance To Light:	ASTM F1515 - Passes - $\Delta E \leq 16$
Resistance To Heat:	ASTM F1514 - Passes - $\Delta E \leq 16$
Critical Radiant Flux:	ASTM E648 - Passes - ≥ 0.45 watts/cm ² , Class 9
Smoke Density:	ASTME662 - Part A - less than 450
Impact Insulation Class:	57

SUSTAINABILITY

Certification:	FloorScore® certified
Pre Consumer RC:	37%
Post Consumer RC:	22%

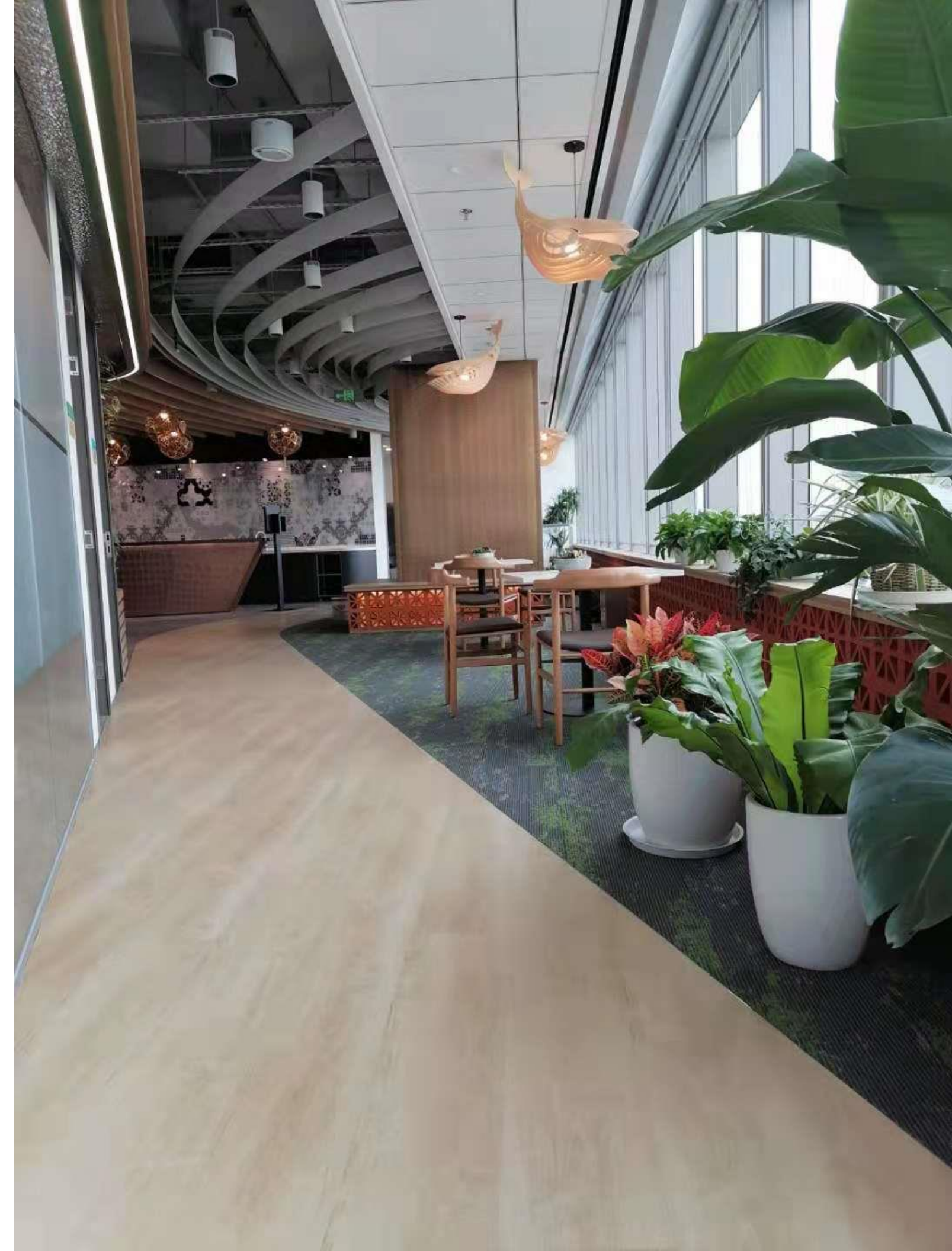
SERVICE

Warranties:	Limited 20 Year Commercial
-------------	----------------------------



ESSCARDIO







MG9197-1



MG9197-3



MG9197-4



MG9197-7



MG9197-16



MG9197-17

DESIGN

Product Type:	Floating LVT
Gauge:	.20"(5mm)
Wear Layer:	20 mil (0.5mm)
Finish:	M-Force Enhanced Urethane
Surface Profile:	Wood Emboss; Light Emboss
Edge Profile:	No Bevel
Size:	9"W x 59"L (228.4mm x 1497.1mm)
Square Feet Per Carton:	22.84 sf/ctn (2.12 m ² /ctn)
Pieces Per Carton:	6 pieces/ctn
Pounds per carton:	40.78 lbs/ctn (18.49 kg/ctn)
Installation Method:	Glue Down
Recommended Adhesive:	MS160 Spray Adhesive or M95.0 Resilient Flooring Adhesive

PERFORMANCE

Construction:	Commercial Grade Loose Lay Enhanced Resilient Tile
Classification:	ASTM F1700 - Class III, Type A - Smooth, Type B - Embossed
Squareness:	ASTM 2421/ASTM F2055 - Passes - ± 0.10 in. max
Size and Tolerance:	ASTM 2421/ASTM F2055 - Passes - ± 0.16 in. per linear foot
Thickness:	ASTM F386 - Passes - as specified ± 0.005 in.
Flexibility:	ASTM F137 - Passes - 1" mandrel
Dimensional Stability:	ASTM F2199 - Passes - 0.020 in. per linear foot
Static Load:	ASTM F970 - Passes, modified - 1000 psi
Residual Indentation:	ASTM F1914 - Passes - Average less than 8%, maximum single read 10%
Slip Resistant:	ASTM D2047 - Passes Wet: ≥ 0.5
Resistance To Chemicals:	ASTM F925 - Passes - No Change or Slight Change
Resistance To Light:	ASTM F1515 - Passes - $\Delta E \leq 16$
Resistance To Heat:	ASTM F1514 - Passes - $\Delta E \leq 16$
Critical Radiant Flux:	ASTM E648 - Passes - ≥ 0.45 watts/cm ² , Class 9
Smoke Density:	ASTME662 - Part A - less than 450
Impact Insulation Class:	57

SUSTAINABILITY

Certification:	FloorScore® certified
----------------	-----------------------

SERVICE

Warranties:	Limited 20 Year Commercial
-------------	----------------------------



Hot and Heavy Collection



132
Golden Yellow



258
Viva Gold



268
My Precious



353
Rave Red



464
Vogue Violet



525
Freshwater Blue



556
Tempo Teal



585
Blue Steel



631
Lemon Lime



859
On The Line



929
Proper Gray



959
So Fetch

DESIGN

Product Type:	Floating LVT
Gauge:	.20"(5mm)
Wear Layer:	20 mil (0.5mm)
Finish:	M-Force Enhanced Urethane
Size:	18" x 36" (457.2 mm x 914.4 mm)
Square Feet Per Carton:	18sf/ctn (1.67 m2/ctn)
Pieces Per Carton:	4 pcs/ctn
Installation Method:	Perimeter Glue
Recommended Adhesive:	MS160 spray. May also use M95.0 Acrylic

PERFORMANCE

Construction:	Commercial Grade Loose Lay Resilient Tile
Classification:	ASTM F1700 - Class III, Type A - Smooth, Type B - Embossed
Squareness:	ASTM F2055 - Passes - 0.010 in. max
Size and Tolerance:	ASTM F2055 - Passes - ± 0.016 in. per linear foot
Thickness:	ASTM F386 - Passes - as specified ± 0.005 in. (± 0.13 mm)
Flexibility:	ASTM F137 - Passes - ≤ 1.0 in., no cracks or breaks
Dimensional Stability:	ASTM F2199 - Passes - ≤ 0.024 in. per linear foot
Residual Indentation:	ASTM F1914 - Passes - Average less than 8%
Slip Resistant:	ASTM C1028 - Passes
Resistance To Chemicals:	ASTM F925 - Passes - No Change or Slight Change
Resistance To Light:	ASTM F1515 - Passes - $\Delta E \leq 8$
Resistance To Heat:	ASTM F1514 - Passes - $\Delta E \leq 8$
Critical Radiant Flux:	ASTM E648 - Passes - ≥ 0.45 watts/cm2, Class 1

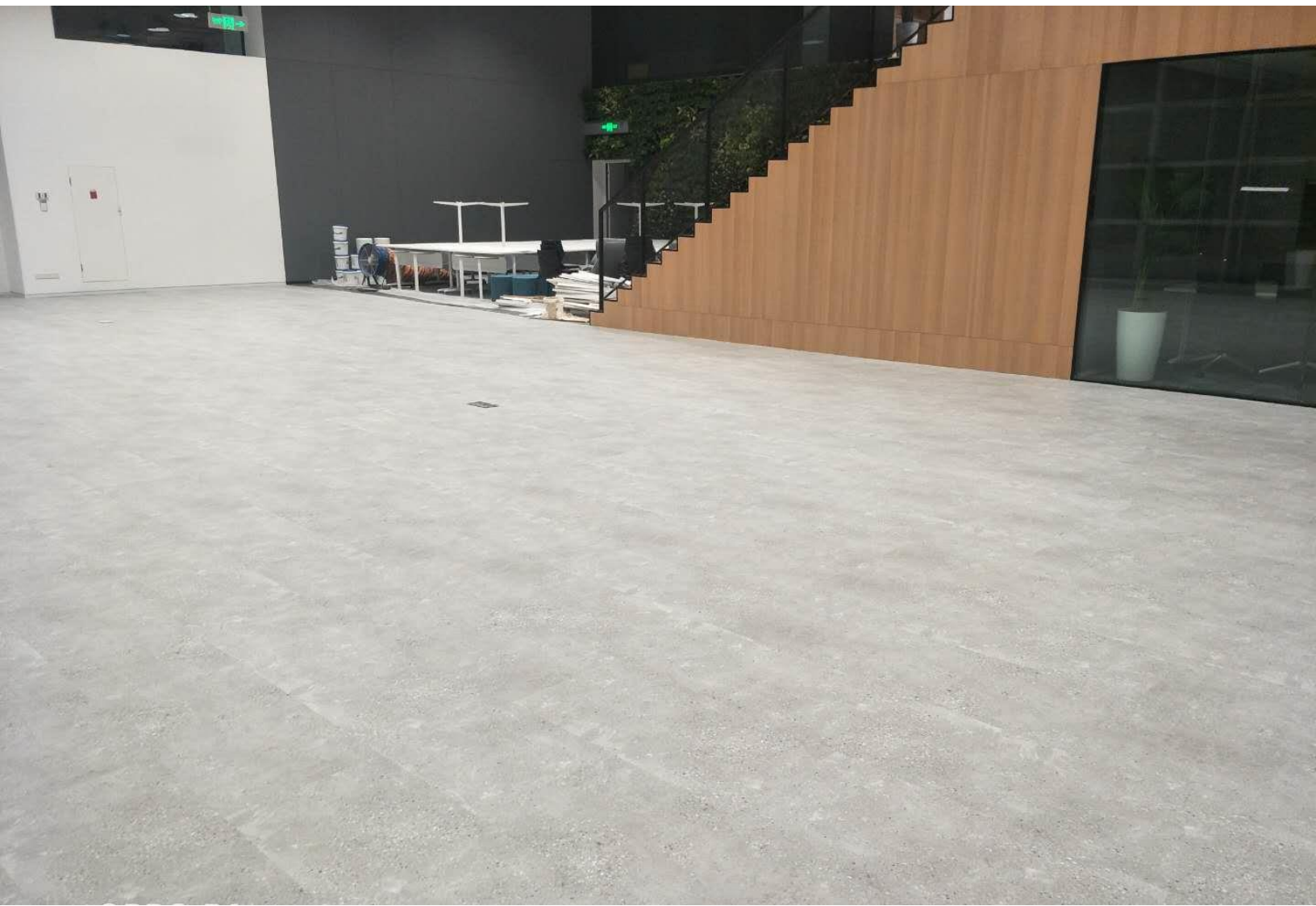
SUSTAINABILITY

Certification:	FloorScore® certified
Biobased Material Content:	8%

SERVICE

Warranties:	Limited 20 Year Commercial
-------------	----------------------------





Hot and Heavy Collection



DESIGN

Product Type:	Floating LVT
Gauge:	5 mm (.2")
Wear Layer:	20 mil (0.5 mm)
Finish:	M-Force Ultra
Surface Profile:	Light Emboss
Edge Profile:	Square
Size:	36"W x 36"L (actual)
Square Feet Per Carton:	36 sf/ctn (3.34 m ² /ctn)
Pieces Per Carton:	4 pieces/ctn
Pounds per carton:	63.48 lbs/ctn (28.79 kg/ctn)
Installation Method:	Loose Lay with Perimeter Glue or Full Spread
Recommended Adhesive:	M95.0 Resilient Flooring Adhesive, M99 Resilient Flooring Adhesive, or M700 Adhesive

PERFORMANCE

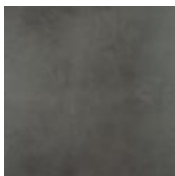
Construction:	Commercial Grade Loose Lay Enhanced Resilient Tile
Classification:	ASTM F1700 - Class III, Type A - Smooth, Type B - Embossed
Squareness:	ASTM 2421/ASTM F2055 - Passes - ± 0.10 in.
Size and Tolerance:	ASTM 2421/ASTM F2055 - Passes - ± 0.016 in. per linear foot
Thickness:	ASTM F386 - Passes - as specified ± 0.005 in.
Flexibility:	ASTM F137 - Passes - 1" mandrel
Dimensional Stability:	ASTM F2199 - Passes - 0.020 in. per linear foot
Static Load:	ASTM F970 - Passes, modified - 1000 psi
Residual Indentation:	ASTM F1914 - Passes - Average less than 8%, maximum single read 10%
Resistance To Chemicals:	ASTM F925 - Passes - No Change or Slight Change
Resistance To Light:	ASTM F1515 - Passes - $\Delta E \leq 8$
Resistance To Heat:	ASTM F1514 - Passes - $\Delta E \leq 8$
Critical Radiant Flux:	ASTM E648 - Passes - ≥ 0.45 watts/cm ² , Class 1
Smoke Density:	ASTME662 - Part A - less than 450

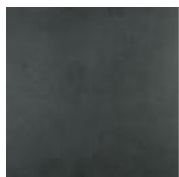
SUSTAINABILITY

Certification:	FloorScore® certified
Pre Consumer RC:	37%
Post Consumer RC:	22%

SERVICE

Warranties:	Limited 10 Year Commercial
-------------	----------------------------


832
River Rock

888
Schist

925
Pebble

999
Onyx





CHINA STOCK



232
Barred



444
Stripe



565
Strake



588
Ridged



646
Variegated



857
Marker



868
Groove



948
Figured



957
Cord



988
Striated

DESIGN

Product Type:	Floating LVT
Gauge:	.20"(5mm)
Wear Layer:	20 mil (0.5mm)
Finish:	M-Force Enhanced Urethane Wood
Surface Profile:	Emboss
Size:	9"W x 59"L (228.4mm x 1497.1mm)
Square Feet Per Carton:	22.84 sf/ctn (2.12 m2/ctn)
Pieces Per Carton:	6 pieces/ctn
Pounds per carton:	40.78 lbs/ctn (18.47kg/ctn)
Installation Method:	Loose Lay with perimeter glue
Recommended Adhesive:	MS160 Spray Adhesive or M95.0 Resilient Flooring Adhesive

PERFORMANCE

Construction:	Commercial Grade Loose Lay Enhanced Resilient Tile
Classification:	ASTM F1700 - Class III, Type A - Smooth, Type B - Embossed
Squareness:	ASTM F2421 - Passes - $\pm 0.10"$ max
Size and Tolerance:	ASTM F2421 - Passes - $\pm 0.16"/$ linear foot
Thickness:	ASTM F386 - Passes - as specified $\pm 0.005"$
Flexibility:	AASTM F137 - Passes - $\leq 1"$ mandrel
Dimensional Stability:	ASTM F2199 - Passes - 0.020"/linear foot max
Static Load:	ASTM F970 - Passes, modified - 1000 psi
Residual Indentation:	ASTM F1914 - Passes - Average less than 8%, maximum single reading 10%
Slip Resistant:	ASTM C1028 - Passes ≥ 0.5
Resistance To Chemicals:	ASTM F925 - Passes - No more than a slight change
Resistance To Light:	ASTM F1515 - Passes - $\Delta E < 8$
Resistance To Heat:	ASTM F1514 - Passes - $\Delta E < 8$
Critical Radiant Flux:	ASTM E648 - Class 1(>0.45 W/cm2)
Smoke Density:	ASTM E662 Part A - Less than 450
Impact Insulation Class:	57

SUSTAINABILITY

Certification:	FloorScore® certified
Pre Consumer RC:	37%
Post Consumer RC:	22%

SERVICE

Warranties:	Limited 20 Year Commercial
-------------	----------------------------

CHINA STOCK







241
Rockwood



646
Imagine



736
Spalding



915
Blueblood



936
Quietude



989
Argus

DESIGN

Product Type:	Glue Down LVT
Gauge:	.20" (5mm)
Wear Layer:	20 mil (0.5mm)
Finish:	M-Force Enhanced Urethane
Size:	12" W x 36" L (304.8 mm x 914.4 mm)
Square Feet Per Carton:	18 sf/ctn (1.67 m2/ctn)
Pieces Per Carton:	6 pcs/ctn
Pounds per carton:	33 lbs/ctn (14.95 kg/ctn)
Installation Method:	Glue Down
Recommended Adhesive:	MS160 Spray Adhesive, M95.0 Resilient Flooring Adhesive, M700 Pressure Sensitive Adhesive. Mohawk EnPress Adhesive (single adhesive may be used for Better Together and Mohawk Group carpet tile when used in combined installation).

PERFORMANCE

Construction:	Commercial Grade Enhanced Resilient Tile
Classification:	ASTM F1700 - Class III, Type A - Smooth, Type B - Embossed
Squareness:	ASTM F2421 - Passes - ± 0.10 " max
Size and Tolerance:	ASTM F2421 - Passes - ± 0.16 " /linear foot
Thickness:	ASTM F386 - Passes - as specified ± 0.005 "
Flexibility:	ASTM F137 - Passes - 1" mandrel
Dimensional Stability:	ASTM F2199 - Passes - 0.020" /linear foot max
Static Load:	ASTM F970 - Passes, modified at 1500 psi
Residual Indentation:	ASTM F1914 - Passes - Average less than 8%, maximum single reading 10%
Slip Resistant:	ASTM C1028 - Passes - Wet: ≥ 0.5
Resistance To Chemicals:	ASTM F925 - Passes - No more than a slight change
Resistance To Light:	ASTM F1515 - Passes - $\Delta E < 8$
Resistance To Heat:	ASTM F1514 - Passes - $\Delta E < 8$
Critical Radiant Flux:	ASTM E648 - Class 1 (> 0.45 W/cm2)
Smoke Density:	ASTM E662 Part A - Less than 450

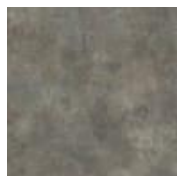
SUSTAINABILITY

Certification:	FloorScore® certified
----------------	-----------------------

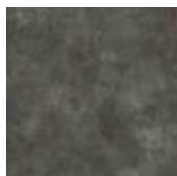
SERVICE

Warranties:	Limited 20 Year Commercial
-------------	----------------------------





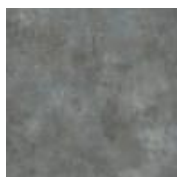
652
Mythical



886
Eclipse



946
Granita



955
Fresco

DESIGN

Product Type:	Glue Down LVT
Gauge:	.20" (5mm)
Wear Layer:	20 mil (0.5mm)
Finish:	M-Force Enhanced Urethane
Size:	24" W x 24" L (609 mm X 609 mm)
Square Feet Per Carton:	16 sf/ctn (1.48 m2/ctn)
Pieces Per Carton:	4 pcs/ctn
Pounds per carton:	29 lbs/ctn (13.14 m2/ctn)
Installation Method:	Glue Down
Recommended Adhesive:	MS160 Spray Adhesive, M95.0 Resilient Flooring Adhesive, M700 Pressure Sensitive Adhesive. Mohawk EnPress Adhesive (single adhesive may be used for Better Together and Mohawk Group carpet tile when used in combined installation).

PERFORMANCE

Construction:	Commercial Grade Enhanced Resilient Tile
Classification:	ASTM F1700 - Class III, Type A - Smooth, Type B - Embossed
Squareness:	ASTM F2421 - Passes - $\pm 0.10"$ max
Size and Tolerance:	ASTM F2421 - Passes - $\pm 0.16"/$ linear foot
Thickness:	ASTM F386 - Passes - as specified $\pm 0.005"$
Flexibility:	ASTM F137 - Passes - 1" mandrel
Dimensional Stability:	ASTM F2199 - Passes - 0.020"/linear foot max
Static Load:	ASTM F970 - Passes, modified at 1500 psi
Residual Indentation:	ASTM F1914 - Passes - Average less than 8%, maximum single reading 10%
Slip Resistant:	ASTM C1028 - Passes - Wet: ≥ 0.5
Resistance To Chemicals:	ASTM F925 - Passes - No more than a slight change
Resistance To Light:	ASTM F1515 - Passes - $\Delta E < 8$
Resistance To Heat:	ASTM F1514 - Passes - $\Delta E < 8$
Critical Radiant Flux:	ASTM E648 - Class 1 (> 0.45 W/cm2)
Smoke Density:	ASTM E662 Part A - Less than 450

SUSTAINABILITY

Certification:	FloorScore® certified
----------------	-----------------------

SERVICE

Warranties:	Limited 20 Year Commercial
-------------	----------------------------




711
Linen

884
Ancestral

DESIGN

Product Type:	Glue Down LVT
Gauge:	.20" (5mm)
Wear Layer:	20 mil (0.5mm)
Finish:	M-Force Enhanced Urethane
Size:	4" W x 36" L (101.6mm x 914.4mm)
Square Feet Per Carton:	16 sf/ctn (1.49 m2/ctn)
Pieces Per Carton:	16 pcs/ctn
Pounds per carton:	29 lbs/ctn (13.14 kg/ctn)
Installation Method:	Glue Down
Recommended Adhesive:	MS160 Spray Adhesive, M95.0 Resilient Flooring Adhesive, M700 Pressure Sensitive Adhesive. Mohawk EnPress Adhesive (single adhesive may be used for Better Together and Mohawk Group carpet tile when used in combined installation).

PERFORMANCE

Construction:	Commercial Grade Enhanced Resilient Tile
Classification:	ASTM F1700 - Class III, Type A - Smooth, Type B - Embossed
Squareness:	ASTM F2421 - Passes - ± 0.10 " max
Size and Tolerance:	ASTM F2421 - Passes - ± 0.16 " /linear foot
Thickness:	ASTM F386 - Passes - as specified ± 0.005 "
Flexibility:	ASTM F137 - Passes - 1" mandrel
Dimensional Stability:	ASTM F2199 - Passes - 0.020" /linear foot max
Static Load:	ASTM F970 - Passes, modified at 1500 psi
Residual Indentation:	ASTM F1914 - Passes - Average less than 8%, maximum single reading 10%
Slip Resistant:	ASTM C1028 - Passes - Wet: ≥ 0.5
Resistance To Chemicals:	ASTM F925 - Passes - No more than a slight change
Resistance To Light:	ASTM F1515 - Passes - $\Delta E < 8$
Resistance To Heat:	ASTM F1514 - Passes - $\Delta E < 8$
Critical Radiant Flux:	ASTM E648 - Class 1 (> 0.45 W/cm2)
Smoke Density:	ASTM E662 Part A - Less than 450

SUSTAINABILITY

Certification:	FloorScore® certified
----------------	-----------------------

SERVICE

Warranties:	Limited 20 Year Commercial
-------------	----------------------------





766
Bonafide



876
Colonial



878
Peristyle



986
Twilight

DESIGN

Product Type:	Glue Down LVT
Gauge:	.20" (5mm)
Wear Layer:	20 mil (0.5mm)
Finish:	M-Force Enhanced Urethane
Size:	8" W x 48" L (203.1mm x 1218.7mm)
Square Feet Per Carton:	16 sf/ctn (1.49 m2/ctn)
Pieces Per Carton:	6 pcs/ctn
Pounds per carton:	29 lbs/ctn (13.14 kg/ctn)
Installation Method:	Glue Down
Recommended Adhesive:	MS160 Spray Adhesive, M95.0 Resilient Flooring Adhesive, M700 Pressure Sensitive Adhesive. Mohawk EnPress Adhesive (single adhesive may be used for Better Together and Mohawk Group carpet tile when used in combined installation).

PERFORMANCE

Construction:	Commercial Grade Enhanced Resilient Tile
Classification:	ASTM F1700 - Class III, Type A - Smooth, Type B - Embossed
Squareness:	ASTM F2421 - Passes - $\pm 0.10"$ max
Size and Tolerance:	ASTM F2421 - Passes - $\pm 0.16"/$ linear foot
Thickness:	ASTM F386 - Passes - as specified $\pm 0.005"$
Flexibility:	ASTM F137 - Passes - 1" mandrel
Dimensional Stability:	ASTM F2199 - Passes - 0.020"/linear foot max
Static Load:	ASTM F970 - Passes, modified at 1500 psi
Residual Indentation:	ASTM F1914 - Passes - Average less than 8%, maximum single reading 10%
Slip Resistant:	ASTM C1028 - Passes - Wet: ≥ 0.5
Resistance To Chemicals:	ASTM F925 - Passes - No more than a slight change
Resistance To Light:	ASTM F1515 - Passes - $\Delta E < 8$
Resistance To Heat:	ASTM F1514 - Passes - $\Delta E < 8$
Critical Radiant Flux:	ASTM E648 - Class 1 (> 0.45 W/cm2)
Smoke Density:	ASTM E662 Part A - Less than 450

SUSTAINABILITY

Certification:	FloorScore® certified
----------------	-----------------------

SERVICE

Warranties:	Limited 20 Year Commercial
-------------	----------------------------



Molveno Collection



105
Argos



121
Touch of Sand



817
Iced Mocha



855
Toasty



858
Warmstone



872
Jute Brown



905
Tin Lizzie



982
Caraibe



983
Grounded



992
Ginger Root

DESIGN

Product Type:	Floating LVT
Gauge:	6 mm
Wear Layer:	20 mil (0.5 mm)
Finish:	M-Force Enhanced Urethane
Size:	196.85mm x 1517.65mm (actual) 7.75" W x 59.75" L (nominal)
Square Feet Per Carton:	19.294 sf/ctn
Installation Method:	Floating

PERFORMANCE

Construction:	Commercial Grade Resilient Flooring with Rigid Polymeric Core
Squareness:	ASTM F2421 - Passes - $\pm 0.10"$ max
Size and Tolerance:	ISO24337 - Plank @48" - Passes - $\pm 0.08"$
Thickness:	ASTM F387 - Passes - as specified $\pm 0.005"$
Dimensional Stability:	ASTM F2199 - Passes - $0.020"/linear foot$ max
Curling:	ASTM F2199 - Passes - $0.08"$ Max
Static Load:	ASTM F970 - Passes, modified at 1500 psi
Residual Indentation:	ASTM F1914 - Passes - Average less than 8%, maximum single reading 10%
Slip Resistant:	ASTM C1028 - Passes - Wet: ≥ 0.5
Resistance To Chemicals:	ASTM F925 - Passes - No more than a slight change
Resistance To Light:	ASTM F1515 - Passes - $\Delta E < 8$
Resistance To Heat:	ASTM F1514 - Passes - $\Delta E < 8$
Critical Radiant Flux:	ASTM E648 - Class 1 ($>0.45 W/cm^2$)
Smoke Density:	ASTM E662 Part A - Less than 450
Wear Layer Thickness:	ASTM F410 - Passes - Commercial Min $0.02"$

SUSTAINABILITY

Certification:	FloorScore® certified
Virgin Vinyl:	100% Virgin Vinyl

SERVICE

Warranties:	Limited 20 Year Commercial
-------------	----------------------------





Molveno Collection

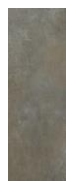

879
Perfect Greige



889
Software



979
Grey Matters



988
Cityscape



997
Night Owl

Stock color:879/889/979

DESIGN

Product Type:	Floating LVT
Gauge:	6 mm
Wear Layer:	20 mil (0.5 mm)
Finish:	M-Force Enhanced Urethane
Size:	298.45mm x 908.05mm (actual) 11.75" W x 35.75" L (nominal)
Square Feet Per Carton:	17.503 sf/ctn
Installation Method:	Floating

PERFORMANCE

Construction:	Commercial Grade Resilient Flooring with Rigid Polymeric Core
Squareness:	ASTM F2421 - Passes - $\pm 0.10"$ max
Size and Tolerance:	ISO24337 - Plank @48" - Passes - $\pm 0.08"$
Thickness:	ASTM F387 - Passes - as specified $\pm 0.005"$
Dimensional Stability:	ASTM F2199 - Passes - 0.020"/linear foot max
Curling:	ASTM F2199 - Passes - 0.08" Max
Static Load:	ASTM F970 - Passes, modified at 1500 psi
Residual Indentation:	ASTM F1914 - Passes - Average less than 8%, maximum single reading 10%
Slip Resistant:	ASTM C1028 - Passes - Wet: ≥ 0.5
Resistance To Chemicals:	ASTM F925 - Passes - No more than a slight change
Resistance To Light:	ASTM F1515 - Passes - $\Delta E < 8$
Resistance To Heat:	ASTM F1514 - Passes - $\Delta E < 8$
Critical Radiant Flux:	ASTM E648 - Class 1(>0.45 W/cm ²)
Smoke Density:	ASTM E662 Part A - Less than 450
Wear Layer Thickness:	ASTM F410 - Passes - Commercial Min 0.02"

SUSTAINABILITY

Certification:	FloorScore® certified
Virgin Vinyl:	100% Virgin Vinyl

SERVICE

Warranties:	Limited 20 Year Commercial
-------------	----------------------------

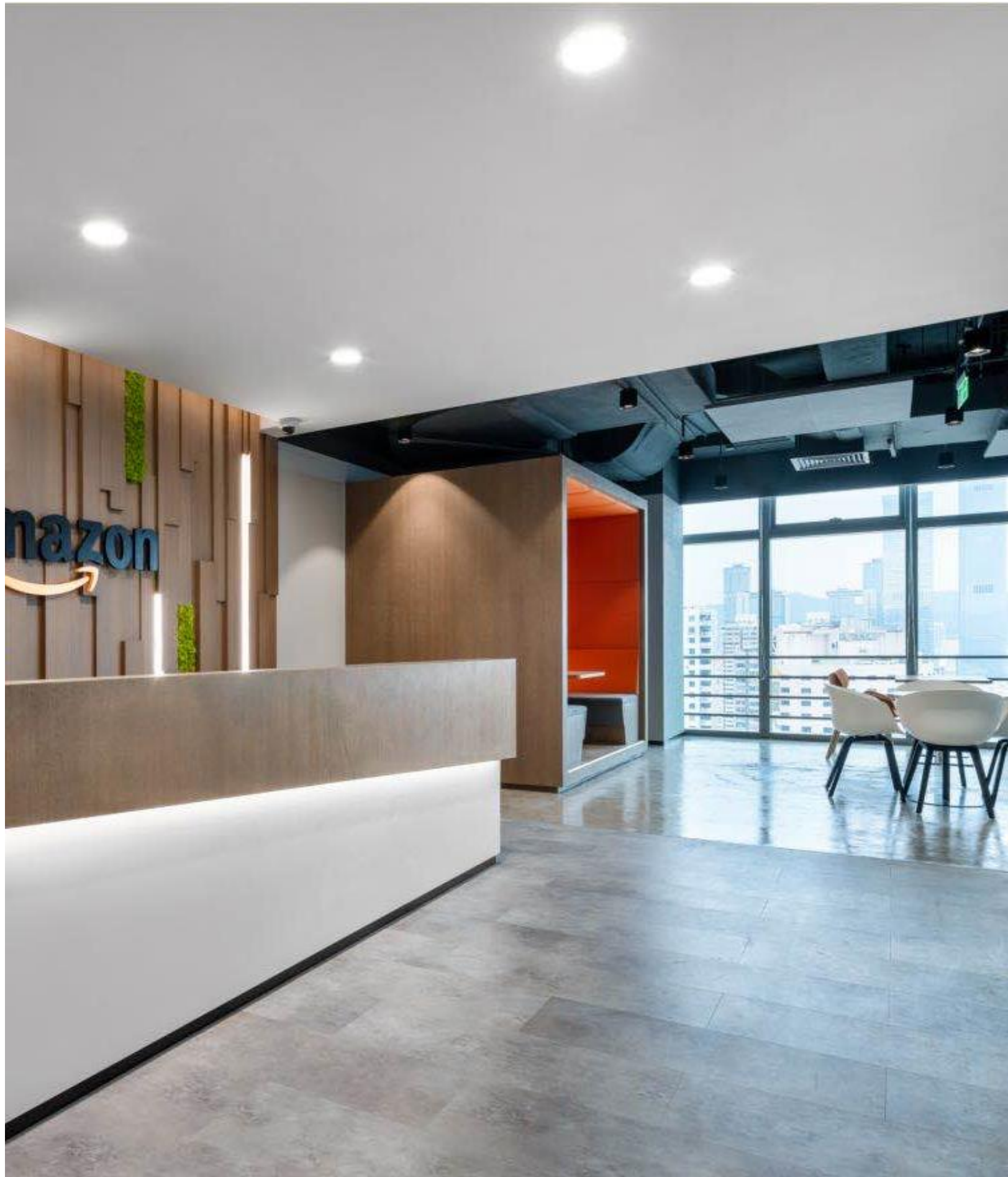


R
ACTION

INSIST ON THE HIGHEST STANDARDS

WE BUILD
BETTER AND FASTER

空调机房
KX001





DESIGN

Product Type:	Floating LVT
Gauge:	.24" (6.2 mm)
Wear Layer:	20 mil (0.5 mm)
Finish:	M-Force Ultra
Size:	7.14" W x 48.62" L (actual) 7" W x 48" L (nominal)
Square Feet Per Carton:	21.7 sf/ctn 9
Pieces Per Carton:	pieces/ctn
Pounds per carton:	44.01 lb/ctn
Installation Method:	Click

PERFORMANCE

Construction:	Rigid Enhanced Resilient Tile
Classification:	ASTM F3261 - Grade 1, Type A - Smooth, Type B - Embossed
Squareness:	ASTM F2055 - Passes - ± 0.010 " max
Size and Tolerance:	ISO 24337 - Plank @48" - Passes - ± 0.08 "
Thickness:	ASTM F387 - Passes - as specified ± 0.005 "
Dimensional Stability:	ASTM F2199 - Passes - 0.020"/linear foot max
Curling:	ASTM F2199 - Passes - 0.08" Max
Static Load: Residual	ASTM F970 - Passes, modified at 1000 psi
Indentation:	ASTM F1914 - Passes - Average less than 0.007"
Resistance To Chemicals:	ASTM F925 - Passes - No more than a slight change in surface dulling, surface attack, or staining
Resistance To Light:	ASTM F1515 - Passes - $\Delta E < 8$
Resistance To Heat:	ASTM F1514 - Passes - $\Delta E < 8$
Critical Radiant Flux:	ASTM E648 - Class 1 (> 0.45 W/cm ²)
Smoke Density:	ASTM E662 Part A - Less than 450
Wear Layer Thickness:	ASTM F410 - Passes - Commercial Min 0.02"

SUSTAINABILITY

Certification:	FloorScore® certified
----------------	-----------------------

SERVICE

Warranties:	Limited 20 Year Commercial Warranty
-------------	-------------------------------------



712
Featherweight



722
Knock Out



747
Main Event



831
One-Two



868
Champion



888
Be First



933
Off the Ropes



959
Shadow Boxing

