



Wallcovering | Fabric | Carpet | Flooring

Enlivening Spaces with Quality
and Stylish Furnishings



Refining Our Core Competencies In A New World

A Definitive Approach

We have entered 2025 with steady momentum in strengthening our infrastructure and with strong product launches from our core product categories: wallcovering, fabrics, carpets and flooring. The Goodrich Global brand as Asia's leading distributor in interior furnishing materials, is a key focus moving forward with a number of initiatives underway to maximise the success of the Group.

At the forefront, we aim to grow our B2B Contract services, and strengthen our foothold in the hospitality and hospital care industries. We highlighted four strategic priorities including a focus on Generative Artificial Intelligence (GenAI) technology to drive innovation, productivity, and environmental benefits. We remain guided by our Joy Of Design ethos as we continue to create comfortable spaces for all people as a Space Creation company.

*“Good Companies
are built on Great
Products but Great
Companies are built
by Good People”*

Mr. Cheng Swee Ain

Group Chief Executive Officer | Goodrich Global





1 ONE-TO-ONE PARTNERSHIP POWERED BY OUR PEOPLE

Over the years, Goodrich Global has demonstrated consistently, our strengths as the go-to partner in the hospitality and hospital care industry are proven. Our partnership with the award-winning Dusit Thani Laguna Hotel and Thomson Medical Centre are testament to creating long-term value by delivering the one-stop partnership experience of tomorrow to our B2B customers.

2 HARNESSING GEN AI

We are on the path of incorporating GenAI and automation into our workflow across the organization, and to inculcate a culture of smarter, more adaptable people who have embraced these tools and free up our human resources for more complex and creative tasks.

3 STRENGTHENING OUR INFRASTRUCTURE AND GROWING THE COMPANY

The Group continues to enhance the synergies between our people and clients to remain adaptable to changing market dynamics, and directly offer clients a wider variety of options. We also reinforced our commitment to the four pillars of our brand promise: integrity, service excellence, product innovation, and teamwork.

4 COMMITTING TO SUSTAINABILITY

We have made great strides in all of the three pillars of People, Product, and Planet. We aim to empower our partners and customers to reduce their carbon footprint, having added a full suite of game-changing products certified by the Singapore Green Building Council.

Looking back at our journey over the past 42 years since our beginning in 1983, the path has not been without its challenges, but I am proud of who we are today, having served the Group as its former Chief Finance Officer. We have confidence in our products, business strategy, and particularly in our people, who are the foundation of the Company.

On behalf of the Group, I want to thank all our shareholders, customers, partners, and other stakeholders for your support and I'm proud to work with them as we take Goodrich Global forward to a new level of success and achievement.

Mr. Cheng Swee Ain
Group Chief Executive Officer | Goodrich Global

Building A Foundation For Continued Profitable And Sustainable Growth

The Goodrich Global Group unites around a clear purpose: to liberate the process of interior design for our clients and customers. We are committed to inspiring people to express themselves by offering a wide assortment of quality interior furnishing materials in an inspiring creative environment.

Moving forward, we have continued to advance our business strategy, which has two major commitments: for the Company to grow its B2B Contract services and to reinforce the Goodrich Global brand as Asia's distributor of choice in the interior design and furnishings industry.

Riding on this positive momentum, the Group remains committed to delivering world-class customer experience, developing talent, and investing in digital capabilities, including Generative Artificial Intelligence (GenAI) tools.

From our collective measures, we aim to achieve a Space Creation company that:

- 1) is a reflection of profound service excellence**
- 2) our people are proud team members**
- 3) our customers trust for its best-in-class product offering and seamless customer experience**

“Effective leadership translates gaps into opportunities, clarity into courage and vision into action”

Mr. Wataru Tsunoda

Group Chief Operating Officer | Goodrich Global





1 STRENGTHENING OUR CAPABILITIES IN SPACE CREATION WITH ELEVATED PRODUCT OFFERING

We have invested in design, craftsmanship, and product quality. We have become even faster at responding to trends, accelerated decision-making, increased supply chain flexibility, expanded our capacity, and tightened the teamwork with our suppliers.

2 STRENGTHENED BRAND BUILDING

We have evolved our brand building by connecting more effectively with our customers where they spend their time – strengthening our digital presence and reach. Through collaborations with creators and with more relevant and inspiring content, we are building stronger customer relationships with increased engagement.

3 INSPIRING CUSTOMER EXPERIENCES

We continue to improve our product availability and inventory management, to ensure that the right products are available at the right time in the right channel so that the customer offering stays relevant.

4 IMPROVING SERVICES WITH DATA AND TECHNOLOGY

We continue to leverage data analytics and GenAI technology to gain deep insights into our customers' needs and further refine our operations to deliver an enhanced and more personalised customer experience.

A business without profits nullifies the best efforts of its people. On behalf of the Group, I extend my sincere gratitude to our stakeholders for their strong support. We remain firmly committed to ensuring that Goodrich Global maintains its industry-leading position in the years to come.

Mr. Wataru Tsunoda
Group Chief Operating Officer | Goodrich Global



About Goodrich



Through the fusion of global insights and local engagement, our teams fearlessly seek to challenge conventional norms, foster collaborative learning, and transform obstacles into possibilities.



OUR MISSION

We are an **innovation-driven** and **people-centric** company in interior furnishings committed to serving our customers with **excellent products and services**.

OUR PURPOSE

We exist to **enrich our habitats and environments** where people live, work and play.

OUR VALUES

TEAMWORK We foster collaboration in everything we do.

INTEGRITY We value our people and our reputation.

DELIGHT CUSTOMERS We are locally dedicated on a global scale.

CONTINUOUS IMPROVEMENT We have an empowering culture and hold ourselves accountable.

As Asia's leading supplier of wallcoverings, fabrics, carpets, and flooring materials, Goodrich Global offers strategic interior furnishing solutions to businesses such as architecture and interior design firms, property developers, and the hospitality and commercial sectors. Our experts include product specialists, technicians, and planners, designers and project management professionals.

We maintain leadership by prioritising community needs and client satisfaction in regions that we operate. Our comprehensive services cover a range of professional services throughout all project execution phases, including initial development, planning, production, branding, project management, design, installation, and fulfillment.

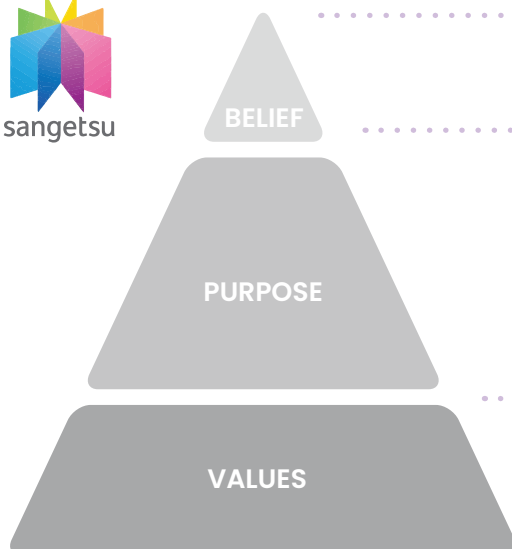
The company's regional offices provide full-cycle support, fostering a collaborative approach between sector and regional leaders. This allows us to combine local insights with global expertise, and develop a multidisciplinary team to produce optimised solutions.

With these strengths, Goodrich Global believes it has the capability and expertise to transform clients' visions into realities that are sustainable in every sense - commercially, technically, socially, and environmentally.



About Sangetsu Corporation

We create social value through space creation and provide the JOY OF DESIGN to those creating enriching spaces. ”



Corporate integrity is the foundation to change society.

- With all people, we collaborate to create peaceful and inspirational spaces
- Spaces, where people spend time, can bring peace and hope to their lives.
- Safe and comfortable space provides us with a source to live for tomorrow.
- Spaces filled with joy and excitement provide us all the power to imagine the future.
- We share the wishes and challenges of all people and seek to create a world where everyone can achieve their dreams for tomorrow through the power of design and creativity.

- Openness & Fairness
- Creativity & Collaboration
- Challenge & Transformation

Japan's iconic furnishing specialist, Sangetsu Corporation's core business lies in the planning, development, manufacture, sales, and installation of interior decorating products which includes wallcovering, fabrics, carpets and flooring.

The corporation's business philosophy has been refined through many generations for 175 years. In the early days, the Sangetsu group prospered from the sale and installation of paper sliding doors for Nagoya Castle. As custodians of the original company founded by Yasuke Hibi in 1849, Sangetsu Corporation embodies the ethos and decorative style of this important cultural icon.

Today, the corporation is Japan's leading supplier of interior furnishing products and services and operates from showrooms in Shinagawa, Nagoya, Osaka, Fukuoka, Sendai, Kanazawa, Hiroshima, and Okinawa and 34 sales offices across the country.



Expanding Our Reach

“To provide the joy of design to those who create new spaces”



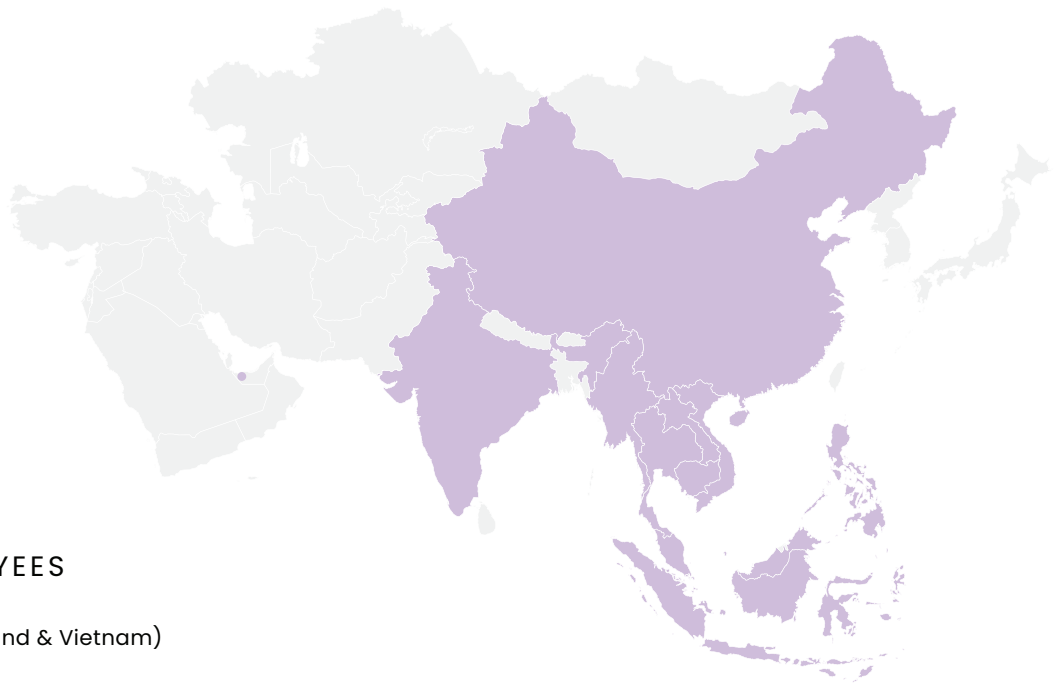
10 COUNTRIES

16 GALLERIES
offering the best archive
experiences

21 OFFICES

>400 EMPLOYEES

Goodrich Global Holdings
Sangetsu Goodrich (Thailand & Vietnam)



SINGAPORE [HQ] • MALAYSIA • THAILAND • VIETNAM • INDIA • INDONESIA • UNITED ARAB EMIRATES • PHILIPPINES • CHINA • HONG KONG (CHINA)

GLOBAL PRESENCE

Goodrich Global is a leading provider of interior furnishing services with a track record of delivering projects of the highest quality. We are involved at every stage of the project life-cycle, from the business case, through design and installation.

We have expanded our reach in Asia, the Middle East, and Europe. Our comprehensive and ever-expanding global network of warehouses and distributors enables our customers to maximise the outcome of their projects across all sectors including commercial, residential, healthcare, and hospitality.

Being a part of the Sangetsu Corporation, our global presence in Thailand and Vietnam is represented by a new company banner: Sangetsu Goodrich. This strategic move enhances our capabilities to serve you better across the region.

Access Asia's Largest Archives of Soft Furnishings

IMMERSE IN A MYRIAD OF STYLES AT OUR EXTENSIVE GALLERIES

Explore our showrooms in more than 16 convenient locations across Southeast Asia. Both Goodrich and Sangetsu Goodrich Galleries are committed to serve our clients, partners, and homeowners well.



Goodrich Gallery | Singapore



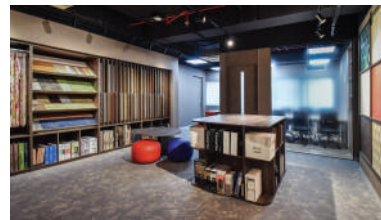
Sangetsu Goodrich Gallery | Thailand



Sangetsu Goodrich Gallery | Thailand



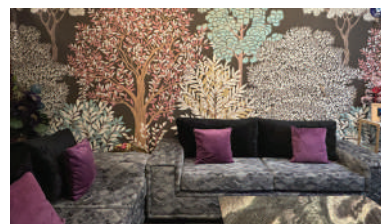
Goodrich Gallery | Malaysia



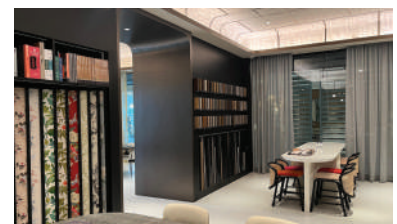
Sangetsu Goodrich Gallery | Vietnam



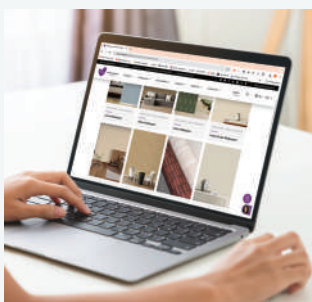
Goodrich Gallery | Indonesia



Goodrich Gallery | India



Goodrich Gallery | Indonesia



UNLOCK ENDLESS POSSIBILITIES ON OUR WEBSITES

Discover over 100,000 SKUs, specifications, e-catalogues, project references, and global brands through our comprehensive online platforms. Our sites cater to clients and partners in 10 countries: Singapore, Malaysia, Thailand, Vietnam, India, Indonesia, United Arab Emirates, Philippines, China, and Hong Kong.

Visit our websites at:

www.goodrichglobal.com | www.goodrichglobal.com.my | www.goodrichglobal.com.hk | www.goodrichglobal.com.cn | www.sangetsu-goodrich.co.th | www.sangetsu-goodrich.vn

Goodrich & Sangetsu Goodrich Galleries

ONE OF THE BIGGEST INTERIOR FURNISHING ARCHIVES IN ASIA

Since 2021, Goodrich and Sangetsu Goodrich has embarked on a journey to revamp our galleries. These galleries serve to showcase vast product portfolio while fostering collaboration between designers and clients.

Through the fusion of global insights and local engagement, our teams fearlessly seek to challenge conventional norms, foster collaborative learning, and transform obstacles into possibilities.

With this approach, our company is primed to achieve triumphant and enduring projects that cater to the diverse needs of our clients.



CATERING TO A DIVERSE GLOBAL MARKET

Every brand in our growing portfolio contributes a unique chapter to our business. We embody the complete range of interior design, seamlessly bridging contemporary, sleek styles with the timeless allure of traditional forms. Our brands adeptly cater to an ever-growing market, meeting the diverse needs of our valued clients.

CREATIVITY-DRIVEN

At Goodrich and Sangetsu Goodrich, passion lies at the heart of our endeavors. Drawing inspiration from our archives, our exceptional teams are empowered to bring ideas to fruition. Our galleries serve as your interior design inspiration, curated to ignite imaginations. Here, you can immerse in a world of exquisite wallcoverings, fabrics, carpets, and floorings, embarking on a creative odyssey. This undertaking is deeply rooted in our Group's ethos that encourages creativity in personal expressions.



Capability Profile

1 SKILLS AND KNOWLEDGE

Quality. Craftsmanship. Exceptional Service.

Through our customisation capabilities, we consistently deliver relevant and high-quality products, providing us with a strategic advantage. With the largest service and installation team in the region, we work closely with design firms and enable clients to maximise the outcome of their projects through our Full Cycle Support.

Goodrich Global possesses particular expertise in providing wallcoverings, soft furnishings and flooring products for the following types of facilities:

Hospitality Industry | Healthcare Facilities | Educational Institutions | Places of Interest | Religious Buildings | Residential Projects | Commercial and Retail Buildings

2 PEOPLE

Our People Represents Our Biggest Asset.

With our strong focus on being the premier employer in the interior furnishing industry, we empower our workforce through leadership, culture, capability enhancements, and operational improvements. The Goodrich Leadership Centre plays a vital role in attracting, developing, and retaining talents to meet strategic objectives, while fostering an engaging and inclusive culture for all employees.

3 CUSTOMER EXPERIENCE

Fostering strong customer relationships is paramount to our business success. With a diverse customer base across different geographies, we dedicate ample time to analyse customer trends and feedback to ensure a deeper understanding of their evolving needs.

In addition to advancements in our IT systems and communication channels, our Full Cycle Support is designed to support clients throughout their space creation journey. From initial conceptualisation to installation and beyond, our team is dedicated to ensuring a seamless and successful experience for our valued clients.

4 PRODUCTS

At Goodrich Global, our product offerings continuously evolve to meet new customer demands. Through meticulous partner selection and adherence to stringent specifications, quality, and standards, we uphold our

position as a leader in the interior furnishing industry, setting the standard for quality and design trends.

We provide the following products and installation services:

- **WALLCOVERINGS:** Vinyl, Paper, Textile, Natural Handcrafted and Hand-painted.
- **FABRICS:** Upholstery, Curtain, Cushion, Accessories, Window Treatment, Blinds, Leather and Bespoke designs.
- **CARPET:** Broadloom, Carpet Tiles, Custom Design, Wool, Bamboo and Sisal.
- **FLOORING:** Vinyls, Laminates, Engineered Timbers, Outdoor WPC Decking and Rubber Tiles (Indoor and Outdoor).
- **WEAR-RESISTANT / ECO-FRIENDLY** products

5 MANAGEMENT & OPERATIONS

Goodrich Global's success is driven by our management team and its commitment to achieve results for our customers. We strive to deliver value to our stakeholders through our business model, focusing on:

1. Providing relevant product offerings.
2. Delivering top-notch service.
3. Leveraging on the benefits of our Full Cycle Support.
4. Regularly investing in new technologies.
5. Maintaining a strong logistics network.
6. Developing strong marketing campaigns and utilising marketing tools.

Our stringent Quality Management System designed around the ISO certification is a reliable and effective means to:

- Understand the requirements of our business operations
- Evaluate the productivity of our business processes
- Achieve consistent results
- Objectively improve our business practices

We are committed to consistently providing products and services that meet customer and regulatory requirements. Our certifications include ISO 9001:2015, ISO 14001:2015



CERTIFIED ISO 9001:2015 & ISO 14001: 2015

For the Sales, Supply & Installation of
Wallcoverings, Fabrics, Carpets & Floorings

Capability Profile

5 FINANCE CAPABILITY

Goodrich's brand was valued by Brand Finance (UK) at **\$S\$15.4 M.**

We are committed to maintaining a strong balance sheet to weather challenging industry conditions, seize opportunities, and execute long-term strategic initiatives.

Our Goodrich's brand was valued by Brand Finance (UK) at \$S\$15.4 M. Our parent company, Sangetsu Corporation, valued at JPY 163,717 million, owns 50% of Japan's interior decorating market. Acquired brands include Koroseal in North America with a 25% share, and Metro in Canada with a 65% share in the wallcovering market. With Goodrich Global being a part of Sangetsu Corporation, along with our sister companies Koroseal and Metro, our brand positioning enhanced our brand equity and provided resources to undertake large-scale projects.

AWARDS & ACHIEVEMENTS HIGHLIGHTS

- #1** Best Employer for SME by Aon Hewitt
- #1** Best in Wallcovering in Hong Kong, Indonesia and Malaysia
- 1st** company in Singapore awarded the (ISO) 9002 certification
- 3x** winner of the "Distinctive Award" by Singapore Promising Brand
- 4x** winner of the "Enterprise 50 Awards" by Enterprise 50 Association (E50A)

Full Cycle Support



Our integrated service serves as a support system for our clients from project planning through post-installation stages. Focusing on cost, on-time management processes, and techniques, our team is well-equipped to execute projects of varying sizes and complexity.

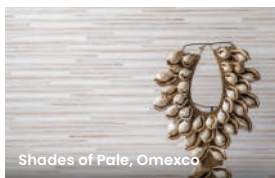
Delivering Sustainability

Our eco-friendly product offering cuts our carbon footprint, greenhouse emissions, electrical and water usage, harmful chemicals and landfill waste, as we remain committed to prioritising responsible forestry and materials that are not harmful to the environment.

WALLCOVERING

Omexco: Ideal for residential, hospitality, and commercial

- Ecological non-woven wallcovering made with FSC-certified materials
- Printed with solar energy, using water-based, solvent-free colours



Shades of Pale, Omexco



Antares, Omexco

Symphony/Vycon: Ideal for residential, hospitality, and commercial

- Zero usage of heavy metals such as lead, mercury, cadmium and chromium
- Class A fire rated
- Low VOC



Ampd, Symphony



Vogue Pleat, Vycon

VINYL FLOORING

Ideal for healthcare and hospitality

- Flooring materials are subjected to stringent procedures by certified organisations for a safe environment
- All wood is subjected to reviews by PEFC (Programme for the Endorsement of Forest Certification) and sourced from sustainable forests
- Vinyl is tested for low levels of TVOC and formaldehyde air emissions



Vinyl Sheet, Armstrong Pastell



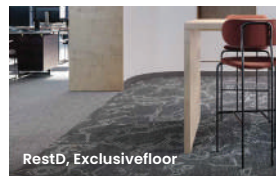
Vinyl Sheet, IVC Optimise 70

CARPET

Exclusive floor: Ideal for residential, hospitality, and commercial

Premier floor: Ideal for hospitality and commercial

- Eco-fresh self-renewal colour reducer treatment
- Micro shield anti-microbial treatment
- Stain shield treatment
- Green label Plus Certified #1171



RestD, Exclusivefloor



Lino

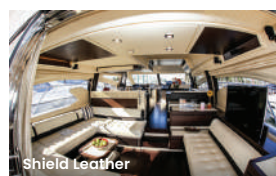
CERTIFICATIONS FOR OUR ECO-FRIENDLY PRODUCTS



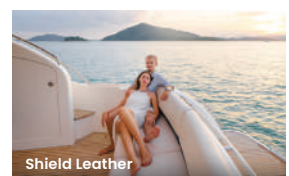
SHIELD LEATHER FABRICS

Ideal for residential, healthcare, commercial and hospitality

- Free of PVC, phthalates, solvent, DMF, heavy metals and harmful chemicals
- Complies with California 01350 VOC emission standards
- Certified Gold for indoor air quality by SCS Global Service
- Flame retardant
- Does not degrade from hydrolysis chemical
- Anti-mildew ASTM G-21
- Skin-friendly and allergen-free



Shield Leather



Shield Leather



Our sustainability strategy is focused towards minimising environmental impact, whilst protecting and preserving the legacy of beautiful craftsmanship.

Hospitality Capability



The best hospitality interior designs combine superior functionality with positive, memorable guest experiences that win the host brand's repeat visits. Achieving that level of excellence in design requires an in-depth understanding of the type of hospitality services being offered, the venue's unique value proposition, brand style and defining characteristics, and its ideal guests' wants and needs.

Consistently setting new standards for style, comfort, and innovation, we have over four decades of experience working with global hotel groups, food and beverage establishments as well as service-oriented businesses.

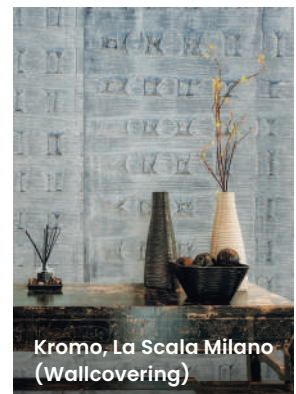
We are committed to developing spaces that are functional, durable and deliver an excellent experience to every guest. Focusing on cost, on-time management processes, and techniques, we can put together the right team to execute projects of varying sizes and complexity.

CUSTOMISATION

We understand that each hospitality environment must not only provide all the expected amenities and functionality but also deliver a distinct experience. Our customisation service extends to support our clients throughout the facility's branding needs.



Atypique, Camengo
(Wallcovering)



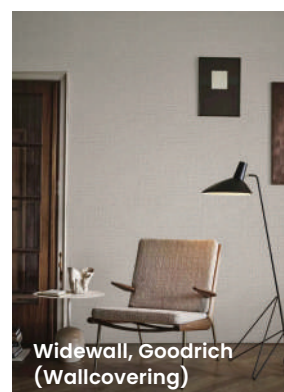
Kromo, La Scala Milano
(Wallcovering)



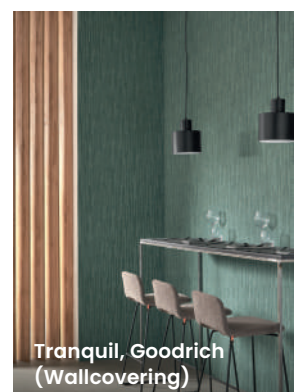
Onewood (Flooring)



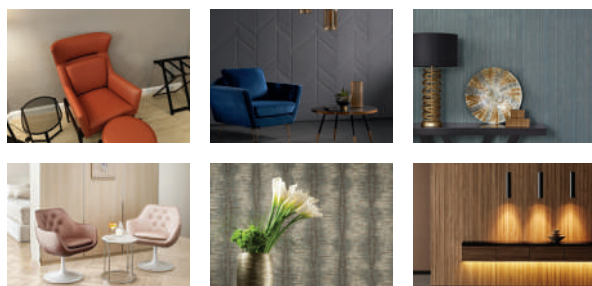
REATEC (Wallcovering)



Widewall, Goodrich
(Wallcovering)



Tranquil, Goodrich
(Wallcovering)



Commercial Capability



A well-designed workspace can ignite creativity, foster collaboration, and significantly enhance productivity. This involves meticulous attention to detail, and understanding what drives your team and how they collaborate. Working with large corporations to small and medium enterprises, we deliver innovative, multi-functional, and connected workplace interiors that fuse seamlessly with your business objectives.



With a focus on your vision and ambitions, our team of experts takes your ideas and transforms them into actionable plans that challenge the boundaries and deliver reliable solutions. What sets us apart is our commitment to seamlessly integrate functionality with design whilst offering a cost-effective, fast turnaround, bespoke solution.

We understand that a well-designed workspace is not just about aesthetics; it is about creating an environment where ideas flourish and businesses thrive.



WORKSPACE DESIGNS CUSTOMISED TO YOUR NEEDS

We work with you to understand your business vision and culture to furnish a workplace that brings to life your unique story while improving productivity and efficiency.



COMMERCIAL OFFICE DESIGN EXPERTS

You can rely on our expertise and extensive experience, ensuring that you receive the highest quality advice and custom office solutions that have a positive impact on your workplace potential.



FRESH DESIGN IDEAS

We are up to date with the latest office design and innovation trends from around the world, to bring you the very best ideas and innovation the industry has to offer.

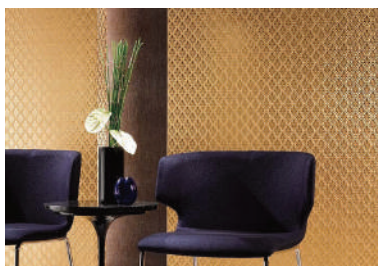
WHAT'S YOUR STYLE

Let your walls do the talking with delectable textures, colours, prints and patterns that expresses your personal style. Choose from our extensive selection to fit any residential or commercial spaces.



SP

Lightweight type of wallcoverings which are ideal for easy installation and transportation. Easy-to-use textiles, stone eye tones, tiles & reliefs, patterns and 65 other items are available. Ideal for residential and light commercial interior spaces.



XSELECT

Quality premium wallcoverings inspired by traditional Japanese art, elements of nature and impeccable craftsmanship. Ideal for residential, commercial and hospitality projects.



BESPOKE WALLCOVERING

There is no better way to personalise a space than a digitally printed wallcovering. Treasured moments can be immortalised while adding character to homes and work spaces. A unique print can be achieved with personal photographs or a ready library of city-scapes, maps, geometric patterns and artistic illustrations.



REATEC (ADHESIVE DECORATIVE FILM)

Reatec is a versatile decorative film that comes in many different shapes, varieties and materials. They can be applied to joinery, doors, windows, and many other furnishings.

Textures and Styles include:
Wood | Real Wood | Real Wood Extra
| Door | Metallic | Colour | Abstract/
Stone | Amusement | Concrete/Rust/
Ceramic | Japanese



GLASS FILM

Designed for enhancing privacy, aesthetics, energy efficiency, and safety. Glass films can include decorative, solar control, safety and security, privacy, and UV protection varieties, catering to both commercial and residential needs. Our offerings include Low Reflectivity Film and Solar Film.

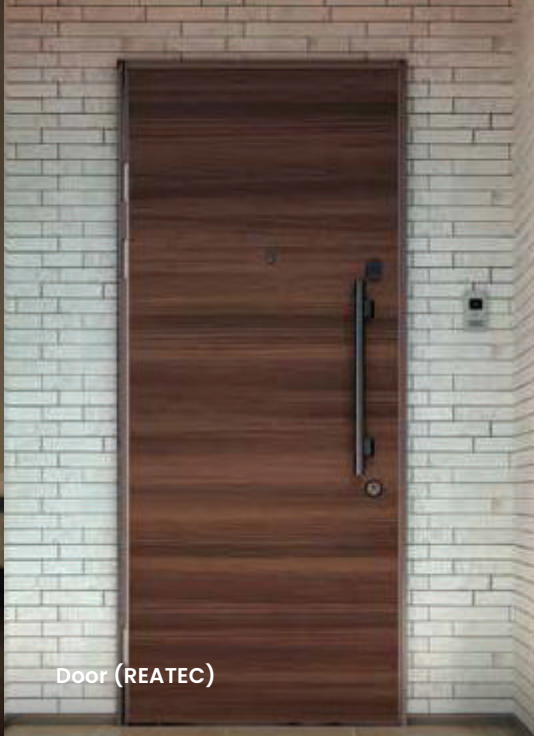


WALLTALKER

The best dry-erase presentation wallcoverings, our walltalkers' broad product line includes projection (low-gloss), magnetic receptive and writable surface, all designed to help users create high-impact communications. All products are made with the highest quality materials and with superior durability.



Real Wood Extra (REATEC)



Door (REATEC)



Real Wood / Wood (REATEC)



SP, Sangetsu (Wallcovering)



XSELECT, Sangetsu (Wallcovering)



BESPOKE Wallcovering



SP, Sangetsu (Wallcovering)



XSELECT, Sangetsu (Wallcovering)



Low Reflectivity Film (Glass Film)

Having fabrics in an interior is a sure fire way to elevate its cosiness. Length, weight and fullness can all be customised to meet your requirements. Narrow your choice with a theme and budget for a fruitful experience.



Leather

• LEATHER

Leather is the undisputable prima donna of interior design, opening up the way to a new concept of architecture for interiors and space décor. This tactile fabric is available in a wide range of exquisite textures so as to satisfy the most diverse needs of style and decoration.



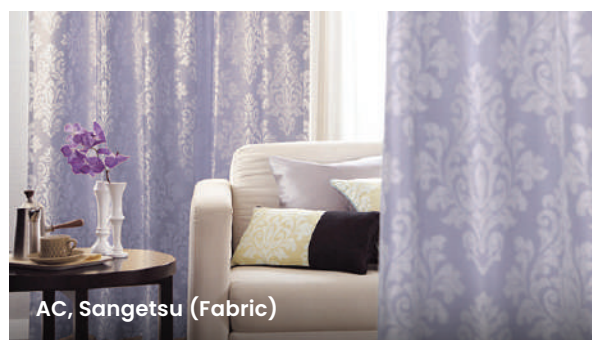
Shield Leather

• SHIELD LEATHER

Ideal for residential, commercial, hospitality, health-care, education, motor, and marine

HIGHLY VERSATILE | EASY-TO-CLEAN | ECO-FRIENDLY
| HIGHLY DURABLE | CUSTOMISABLE

Shield leathers redefine high performance fabrics through the best combination of leather textures and the superior advantages of 100% silicone. It is inherently flame retardant, antibacterial, and has been tested for high abrasion resistance, ensuring durability for high traffic areas.



AC, Sangetsu (Fabric)

• CURTAINS & ROLLER BLINDS

From curtain to roller blinds to upholstery, Sangetsu offers over 4,000 window treatment products. We provide a variety of washable curtain fabrics rich in colour and texture, as well as specialised options for clinics and hospitals with antibacterial and flame-retardant properties.



Concertex (Fabric)

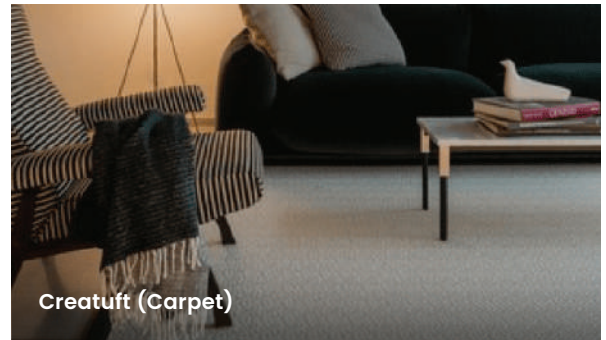
• CONCERTEX

Concertex's patented Graffiti-Free® treatment is the first and most effective ink & stain resistant faux leather in the industry. Established in 2010, the brand leads the industry in material innovation and embraces the courage to change. Today the line has expanded to include six product categories; Textiles, Coated Fabrics, Wallcovering, Wall Tiles, Outdoor, and Acoustic Solutions.

Step into the realm of comfort and durability beneath your feet with our wide range of carpet collection - crafted for style, durability, and tailored to suit any environment from homes to hotels. Here you can discover textures, patterns, and colours that redefine and enhance your spaces.



Decor, Brink and Campman (Carpet)



Creatuft (Carpet)

• RESIDENTIAL CARPETS

Explore the potential of textures with carpets at home. As a flexible option to decorating, carpets can alternate between themes with minimal disruption to an existing space. Our diverse selection of materials includes wool, bamboo and sisal. Custom design options are also available.

• CONTRACT CARPETS

Our extensive range of hard-wearing carpets and carpet tiles are perfect for all types of high traffic environments including hotels, educational institutions, commercial and retail buildings. Commercial grade carpets have a higher stitch count per square metre than carpets for residential use which means that the pile will not mat excessively over the intended lifetime of the carpet in heavy traffic situations. Choose from our diverse selection of patterns and colours or customise one to complement a particular design scheme.



Twinset, Brink and Campman (Carpet)



Twinset, Brink and Campman (Carpet)



Reef, Goodrich (Carpet)

Goodrich Global offers a rich collection of floor coverings, ranging from vinyl to decking indoors and outdoors. With a multitude of designs and innovative surfaces made available, our clients have the freedom to express their creativity and realise all their design needs. All Goodrich Global floorings undergo stringent reviews from Singapore Environmental Council and are Singapore Green Building Council (SGBC) certified.



• VINYL

Resilient and designed to imitate natural floors, our luxury vinyl planks are waterproof and highly fire-resistant, making it suitable for both residential and commercial environments. Sheet vinyl with antibacterial coating and fire and slip resistance is also available for healthcare, childcare and eldercare segments. Additionally, we have specialised sheet vinyl for educational institutions needing acoustic insulation and public areas requiring higher slip resistance.



• ENGINEERED TIMBER

Our engineered timber collection covers a wide variety of wood species that suit every taste, ranging from contemporary to rustic. Designed to be more stable than solid wood floors dimensionally, engineered timber floors are uniformly prefinished with UV coatings to ensure perfect room appearance upon installation.



• ECO COMPOSITE FLOORING

Eco composite flooring sets a new standard in both sustainability and performance. Composed of up to 80% organic materials, with half being recycled material, it significantly reduces the environmental impact. Beyond its green credentials, Eco Composite floor excels in durability, boasting up to 10 times the micro-scratch resistance compared to conventional PVC-based waterproof floors. It's also highly resistant to staining agents.

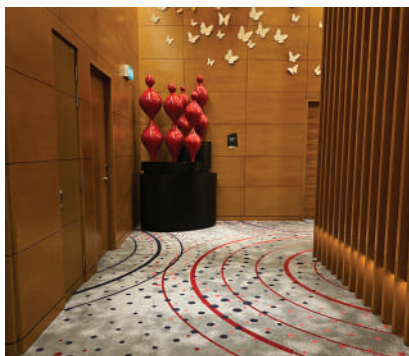


• ONEWOOD TIMBER DECKING

Our WPC decking boards are made up of a unique composite of wood and polymer and are characterised by an exceptional resistance to outdoor conditions, such as sunlight and rainwater. Best known for its high resistance to rotting, insect attacks and decay caused by high-level moisture, WPC decking boards are designed to offer owners peace of mind upon installation and can be maintained easily with water.



Hospitality Projects



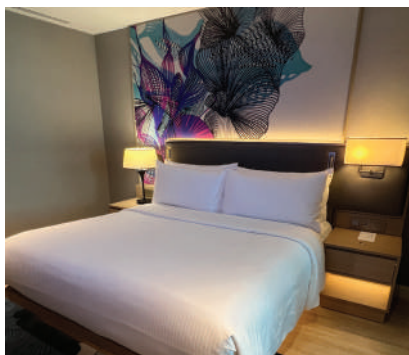
Aloft Hotel, Singapore (Carpet)



Dusit Thani Laguna Singapore (Carpet)



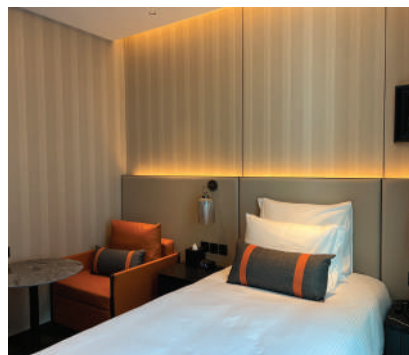
Grand Copthorne Waterfront Hotel, Singapore (Carpet)



Grand Copthorne Waterfront Hotel, Singapore (Wallcovering)



Aloft Hotel, Singapore (Fabric)



Pullman Hotel, Singapore (Wallcovering)



Binh Duong Resort, Vietnam (Fabric)



Aloft Hotel, Singapore (Flooring)



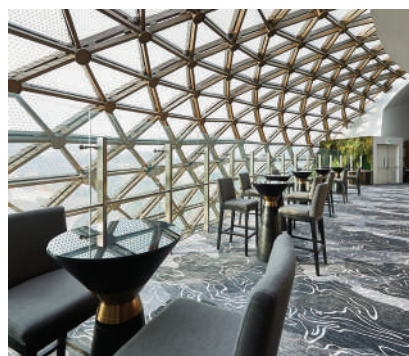
Hotel KL, Malaysia (Digital Wallcovering)



Hotel Mi, Singapore (Wallcovering)



Marriott Residence (Grand Marina Saigon), Vietnam (Wallcovering)



Dusit Thani Laguna Singapore (Carpet)

Commercial Projects



Changi Airport T2 Airbus, Singapore (Carpet)



Changi Airport T2, Singapore (Carpet)



Marina Bay Sands, Singapore (Carpet)



Kome Kushi Hong Kong - Hintegro Interior Design, Hong Kong (Wallcovering)



Petrolimex Branch Office, Vietnam (Carpet)



Starts COCORO Office, Vietnam (Flooring)



Starts COCORO Office, Vietnam (Flooring) 01



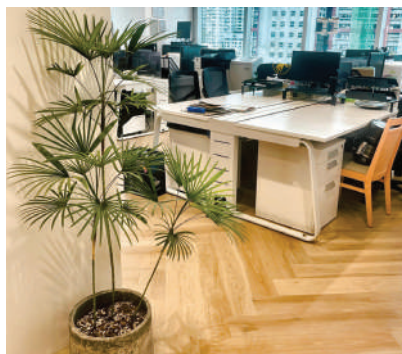
Peninsula Hotel, Singapore (Carpet)



Sushiro, Singapore (Fabric Shield Leather)



Charlie One Club, Hanoi (Carpet)

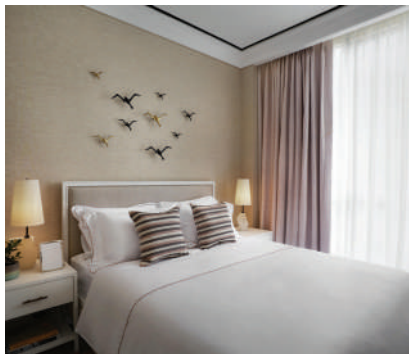


Space Japan Office, Japan (Flooring)



MBS Office @ Centennial Tower, Singapore (Fabric)

Residential Projects



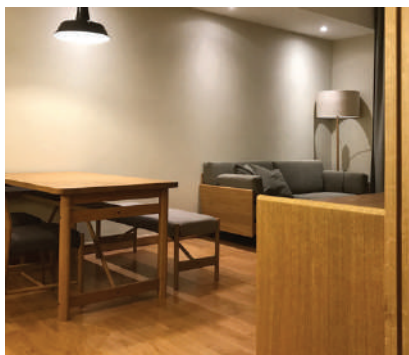
Condominium, XOCA - ET ASSOCIATES, Indonesia (Wallcovering & Curtains)



Landed Property - Timur Designs, Singapore (Carpet)



Reflections at Keppel Bay - i.Poise Interior Design, Singapore (Wallcovering)



Shiracha Condominium, Thailand (Flooring)



Nursery Room, Singapore (Wallcovering)



Space One ID Consultancy (Wallcovering)



One Stop Concept Pte Ltd (Wallcovering)



Landed Property, Singapore (Flooring)



Condominium - Ritz Carlton Residence, Thailand (Handpainted Wallcovering)



Thao Dien, Vietnam (Fabric)



The Marq Apartment, Vietnam (Wallcovering)



Thao Dien, Vietnam (Carpet)

Healthcare Projects



Siriraj Hospital, Thailand (Flooring)



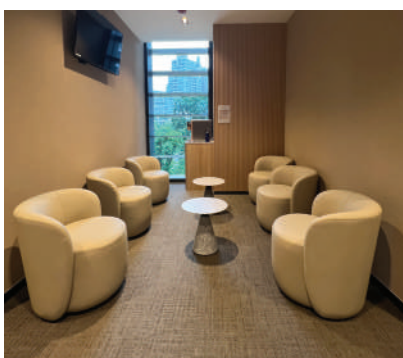
Bangkok Hospital, Thailand (Flooring)



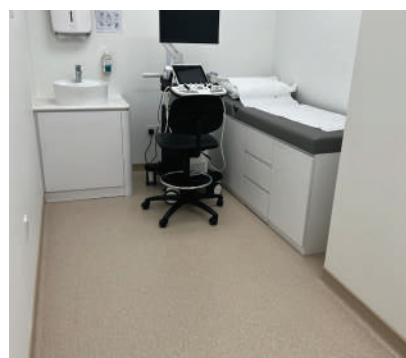
Medical Suite, Singapore (Wallcovering)



Bangkok Hospital, Thailand (Flooring)



Medical Suite, Singapore (Wallcovering)



Medical Suite, Singapore (Flooring)



Admiralty Medical Centre, Singapore (Flooring)



Bangpo Hospital, Thailand (Flooring)



Laboratory @ Biopolis, Singapore (Flooring)



Medical Suite, Singapore (Wallcovering)



Public Areas, Malaysia (Flooring)



Singapore General Hospital (Flooring)

Corporate Social Responsibility (CSR)



CONTRIBUTE AND CARING THE GOODRICH WAY

As a company that prides itself on social responsibility, Goodrich Global goes above and beyond in contribution to society. Going beyond Singapore, Goodrich Global continues to share its successes by giving back to the local community, with a focus on society development, support for the underprivileged, the Arts, and environmental conservation. Goodrich Global employees and associates are encouraged to volunteer their time and enjoy the experience of giving back to the communities in which they work. In executing CSR activities, the company's core values of Customer Centricity, Teamwork, Integrity and Continuous Improvement are put into practice.



Before



After

SINGAPORE

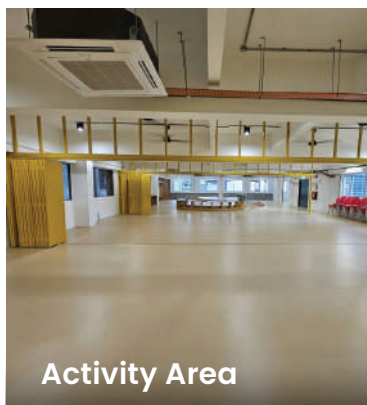
• CARPET DONATION TO THE HELPING HANDS

The Helping Hand adopts a holistic approach for life transformation by providing full cycle support to ex-offenders, including family counseling, life-skills learning and after-care services. Goodrich Global donated carpets for the renovation of their gym that is used as part of the rehabilitation. With the new carpets that also provide sound-proofing, the gym space is revitalised, providing more comfort during workouts.

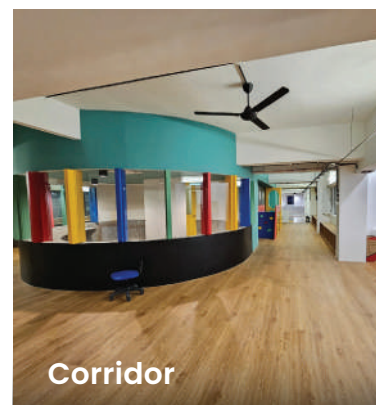
MALAYSIA

• FLOORING DONATION TO YAYASAN CHOW KIT

In July 2024, Goodrich Global Malaysia sponsored vinyl sheet flooring to Yayasan Chow Kit, a Non-Governmental Organisation (NGO) that caters to the needs of children in and around Chow Kit for their new centre. This sponsorship will be providing the children in the centre a better learning and living space.



Activity Area



Corridor

Corporate Social Responsibility (CSR)



Before



After

THAILAND

• MULTI-PURPOSE ROOM RENOVATION FOR THAI RED CROSS CHILDREN HOME (TRCCH)

The TRCCH was founded in 1981 to provide care and find appropriate families for abandoned children, in order to help them achieve a bright future as well as become quality members of the society. Other than donating wallcoverings, roller blinds, tables, chairs, and toys, Sangetsu-Goodrich worked with Singer Thailand PCL and Teka (Thailand) to donate appliances such as refrigerator, water filter, stereo amplifier, and microwave.

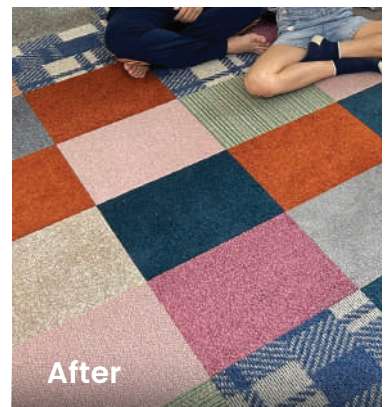
VIETNAM

• CARPET DONATION TO MÁI ẤM HỒNG HOA ORPHANAGE

The Mái Ấm Hồng Hoa Orphanage takes in children from as young as newborns to 6 year-olds, with a current total of over 200 orphans so far. To enliven the orphanage, Sangetsu-Goodrich donated carpets for the activity rooms, making it more cheerful for the children to learn and play in a brighter environment.



Before



After



INDIA

• DISTRIBUTION OF SUPPLIES TO JOIN TOGETHER CHILD ORPHANAGE

Goodrich Global India supports orphanages on a monthly basis. At every activation, our local team helps to distribute food and clothes to orphanages to contribute to the children's well-being.

Successful Project Lists

SINGAPORE

Admiralty Medical Centre
Amara Hotel
Ambassador Transit Hotel
Aquarium Suites @ Resorts World Sentosa
Ascott Raffles Place Service
Apartment Botanika Nature Residences
Casino Main Gaming @Resorts World Sentosa
Cathay - Jem Platinum Movie Suites
Cophorne King's Hotel Singapore
Crowne Plaza Changi Airport
Dorsett Singapore
F1 Pit Building
Fairmont Singapore & Swissotel the Stamford
Four Points by Sheraton Singapore, Riverview
Four Seasons Hotel Singapore
Fraser Suites @River Valley
Gaming Areas at Marina Bay Sands
Grand Asia Restaurant @Odean Tower
Grand Hyatt Singapore
Grand Park City Hall
Grand Park Orchard
Holiday Inn (Atrium, Express)
Hotel 81 (Bencoolen, Geylang)
HSBC Building @ Collyer Quay
Intercontinental Singapore
ITE Ang Mo Kio
Lok Restaurant @Carlton Hotel Singapore
M Hotel Singapore
Mandarin Orchard Singapore
Mandarin Orchard Singapore
Marina Bay Cruise Centre Singapore
Marina Bay Sands Singapore
MAS Building @ Shenton Way
Millenia Tower
Min Jiang Restaurant @Goodwood Park Hotel
Modena Hotel @ Changi Business Park
MOH Building @ Harbourfront Centre
Movenpick Hotel @ Beach View
Nanyang Technological University
National University Hospital
Naumi Hotel Singapore
Ngee Ann Polytechnic Campus
Northpoint City, Singapore
Novotel Singapore
Novotel Singapore Clarke Quay
One Farrer Connexion
Pan Pacific Serviced Suites
Raffles Education Square
Redco Hotels Pvt Ltd
Reny Transport & Trading Co
RWS Hotels (Maxims, Festive, Hard
Rock, Michael, Equarius)
SCDF HQ Command Centre
SGX Centre
Shangri-La's Rasa Sentosa Resort & Spa
Shaw Theatres - Lido Cineplex
Sheraton Towers Singapore
Singapore Economic Development Board (EDB)
Singapore General Hospital
Singapore Marriott Tang Plaza Hotel
Singapore Polytechnic
SP Group
Swissotel Merchant Court
Swissotel the Stamford
The Interlace @Alexandra / Depot Rd
The Legends Fort Canning Park
The Seacore Hotel
Village Hotel Bugis
York Hotel

CHINA / HONG KONG

City of Dream, Macau
East Pacific Residences, Shenzhen, China
Gateway Hotel, Hong Kong
Grand Summit Jing An, Shanghai, China
Hong Kong Kerry Centre
Jing An Kerry Center, Shanghai, China
Junan international 24# Project, Beijing, China
JW Marriott Hotel, Chongqing, China
Majiaqiao Xingyue Guoji, Beijing, China
Marco Polo Hotel, Hong Kong
Merchants, Jiaming Longyuan-Residences,
Beijing, China
New World Beijing Hotel, China
Peninsula Hotel, Hong Kong
Prince Hotel, HongKong
Project Linhe Village, Guangzhou, China
Ramada Hotel, Chengdu, China
Shanghai Jun Ting Mer Sales Department,
Guangzhou, China
Shangri-La Hotel, Dairen, China
Shangri-La Hotel, Jing An, China
Shangri-La Hotel, Pudong, China
Shangri-La Hotel, Qufu, China
Shangri-La Hotel, Sanya, China
Shimao Tianjin Hilton Hotel, China
Solaire Manila, Hong Kong
Studio City, Macau
The City Star Hangzhou Binjiang, China
The Palace No.236 Jianguo Road (W), -
Xuhui, Shanghai, China
The Ritz Carlton, Hong Kong
The U world, Chongqing, China
Venetian Macau Parcel 5 & 6
Wyndham Garden's Hotel, Sanya, China
Yanlord Townhouse, Shanghai, China

INDIA

Amonora Pune
Conrad Bangalore
Crown Place Gurgaon
D2 Aerocity, Delhi
DLF - The Crest
Dusit Devarana Delhi
Gvk Hyderabad
Hilton Chennai
Holiday Inn Aerocity
Holiday Inn Chennai
Hyatt Amritsar
Hyatt Lucknow
Ireo Clubhouses, Delhi
JW Marriott Kolkatta
JW Marriott Pune
Le Meridian Gurgaon
M3M - Golf View
Mahagun Memorial
Marriott Agra
Novotel Aerocity
Novotel Chennai
Ntt Systems Bangalore
Park Hotel Delhi
Pullman Aerocity
Radisson Blu Faridabad
Renaissance Lucknow
Ritz Carlton Pune
Roseate House Aerocity
Sheraton Bangalore
Sheraton Pune
Sofitel Mumbai
Taj Coramendal
Taj Lands End
Taj Lucknow
The Taj Mahal Palace Mumbai
Trump Towers Pune
Vipul Clubhouses, Delhi
Vivanta By Taj Cochin
Vivanta By Taj Gurgaon

INDONESIA

Ahmad Yani International Airport, Semarang
All Stay Hotel Veteran, Semarang
Aman Mineral office @ the Energy
Amarta Hills, Malang
APL University
Ascott Apartment Jakarta
Ashley Hotel, Jakarta
Aston Inn, Semarang
Astra Office BOD level @Menara Astra
Atria Convention center & Hotel, Malang
Atria Hotel, Malang
Bank DBS, Jakarta
Bank DKI Office, Jakarta
Bank Indonesia, Gorontalo
Bank Indonesia, Jayapura
Bank Mega Head Offices and Branch Offices
Bank of Tokyo, Jakarta
Bellevue Hotel, Jakarta
Bina Nusantara Building , Alam Sutra
BNI, Jakarta
Bogor Icon, Bogor West Java
Brawijaya University Kediri
Burger King Office, Jakarta
Cineplex, Pati
Citibank offices Jakarta
Citibank Tower, SCBD, Jakarta
Coca Cola, South Quarter, Jakarta
D'Vasa Hotel, Surabaya
Delonix Hotel, Karawang West Java
Dian Nuswantoro University, Semarang
Exim Bank, Jakarta
Fairfield Sunset road Hotel, Bali
Fairmont Hotel Jakarta
Fourpoint Hotel, Surabaya
Gaia Residence by Dafam, Semarang
GAIKINDO Office, Jakarta
Gapura Kencana Developer Office, Jakarta
Garuda Indonesia offices
GBI Kemayoran, Jakarta
Graha 165, Jakarta
Grand Candi Hotel, Semarang
Grand Whizz Hotel, Padang
Grundfost Jakarta Head Office, Jakarta
HarrisVertu HotelHarmoniJakarta
HM Sampoerna Office, Jakarta
Holcim Office, Jakarta, Medan, Makassar
Horison Hotel, Pasuruan
Hotel Ayana Jakarta Ballroom, Jakarta
Hotel Bumi Segah Berau, North Borneo
Ibis Hotel Harmoni
Indexim office Jakarta
Intercontinental Hotel Pondok Indah, Jakarta
Jakarta Railink, Jakarta
JIEXP0 Convention Center, Jakarta
JW Marriot, Surabaya
Kasongan office
Keraton Hotel Jakarta
Kutaplaya Hotel, Bali
Labersa Hotel and Convention Center, Pekanbaru
Lavie Suites, Jakarta
Le Meridien Hotel Bali

Mandarin Hotel, Jakarta
MAP office
Max One Hotel, Malang
Maybank, Jakarta
Melia Hotel, Jogjakarta
Mercedes Benz Showrooms, Jakarta
Metropolitan Tower, Jakarta
Mitra Adi Perkasa Office, Jakarta
Moetel Dafam, Jember
Navapark, BSD
Nissan Showroom, Palembang
Novotel HotelCikini,Jakarta
OJK office
One Icon Apartment and Office, Surabaya
Optik Melawai showrooms, Jakarta
Padalarang Golf Club House, West Java
Pakuwon Office, Surabaya
Pangkep 33 resto, Malang
Pelindo office Tanjung Priok
Pertamina Office
Plaza PP, Jakarta
PLN office
Police Academy JCLEC, Semarang
Pondok Indah Residence Show Units
Price Waterhouse Cooper (PWC), Jakarta
Radison Hotel Lampung
Raffles Hotel Jakarta
Regent's Park Hotel, Malang
RSIA Melati Husada Hospital, Malang
RSIA Puri Gallery Hospital, Malang
RSPH Hospital, Jakarta
SaffronSentul Citymarketingoffice
Sampoerna Office, Surabaya
Shalimar Hotel, Malang
Shangrila Hotel, Surabaya
Sinar Mas office at BSD
Singapore Embassy
Sitondi Denso, Malang
SMC RS. Telogorejo Hospital, Semarang
Sommersef Grand Citra, Jakarta
St.Regis Hotel, Bali
Sultan Hotel Ballroom Jakarta
Sultan Residence
Sumire Restaurant @Grand Hyatt
Suzuki Dormitory Cikarang
Swiss Belhotel Yogyakarta
Swiss Bell Inn, Malang
Swissbell Hotel Singkawang
Swissbell in Hotel Kelapa Gading, Jakarta
Swissbell in Hotel Kemayoran, Jakarta
Tangerang Selatan City Hall, Banten
Tazkia Ibis, Malang
Telesindo Office, Jakarta
Telkomsel Building Kuningan, Jakarta
The East Building, Jakarta
The Pakubowono Spring, Jakarta
Tjakrindo, Gresik
Ubud Reserve Hotel Bali
VERDE II Apartment show units, Jakarta
Whiz Prime Hotel, Malang
Whizz Hotel Makasar, South Sulawesi
Whizz Hotel Menado, North Sulawesi
XL office @ XL Tower, Jakarta

MALAYSIA

Abell Hotel, Kuching, Sarawak
AEON Departmental Store, throughout Malaysia
AIMST University, Kedah
Alliance Bank, all branches countrywide
Aman Desaru, Johor
Amari Johor Bahru Hotel, Johor
Avangio Hotel Kota Kinabalu, Sabah
Bay 21 Condominium, Kota Kinabalu
Beacon Executive Suites Show Unit, Penang
British America Tobacco Malaysia @ Wisma -
Guocoland, Selangor
Bunga Raya Resorts, KK, Sabah
CIMB Bank, Menara CIMB, KL Sentral
Concorde Hotel, Kuala Lumpur
Cosmo Hotel, Kuala Lumpur
Crockfords Hotel Genting, Pahang
Damai Beach Resort, Kuching, Sarawak
Damansara Specialist Hospital - (Maternity
Ward), Selangor
Damas Suites & Residence, Kuala Lumpur
DeGem Berhad (HQ Office & Retail - Outlets),
Kuala Lumpur
Dialog Group Berhad (HQ Office, Mutiara
Damansara, Selangor
Dorsett Hermitage Hotel, Sri Hartamas,
Kuala Lumpur
Dorsett Regency Hotel, KualaLumpur
Double Tree Hilton, Johor Bahru
Eco Tropics Convention Hall, Johor Bahru
ENCORP Berhad Corporate Office, The Strand,
Selangor
EPF(KWSP) Learning Centre, Bangi, Selangor
First World Hotel, Genting Highlands, Pahang
Four Seasons Place, Kuala Lumpur
Fraser Residence, Kuala Lumpur
French Sole @ Pavilion KL, Kuala Lumpur
Gleneagles Hospital, Johor Bahru
Gleneagles Hospital, Kota Kinabalu, Sabah
Global Minerals (Sarawak) Office, Kuching, Sarawak
Gold & Silver Casino, Genting Highlands, Pahang
Google office, Menara One Sentrum, Kuala Lumpur

Goucoland HQ Office, Damansara City, Kuala Lumpur
 Grand Dorsett Labuan, Sabah
 Grand Margherita Hotel, Kuching, Sarawak
 Grand Millennium, Kuala Lumpur
 Harbour View Hotel Kuching, Sarawak
 High Commission of the Republic of Singapore, Kuala Lumpur
 Holiday Inn Hotel, Penang
 Hotel Casuarina @ Meru, Ipoh
 Hotel Grandis, Kota Kinabalu, Sabah
 Hotel Maxims, Genting Highlands
 Hotel Puri, Melaka
 ICBC Bank, Menara Maxis, Kuala Lumpur
 IKEA Cheras, Kuala Lumpur & Damansara, Selangor
 Imperial Hotel Miri, Miri, Sarawak
 Institut Tadbiran Awam Negara (INTAN)-Kampus Wilayah Sarawak
 Institute Amirudin Baki, Kuching, Sarawak
 IPC (Ikano Power Centre) Shopping Centre, Selangor Island Hospital, Penang
 JW Marriott, Kuala Lumpur
 Kelab Golf Sarawak, Kuching, Sarawak
 KL Eco City Sales Gallery & Show Unit, Kuala Lumpur
 KL Gateway Corporate - Office & Business - Suite, Kuala Lumpur
 KL Hilton, Kuala Lumpur
 KPMG KL Office, Chartered Accountant, Kuala Lumpur
 KTS Resources Sdn Bhd, Kuala Lumpur
 KWAP Office
 Land Custody and Development Authority - (LCDA), Kuching, Sarawak
 LCCT Plaza Premium Lounge, Selangor
 Lexis Hibiscus Port Dickson, Negeri Sembilan
 London Stock Exchange Office, Kuching, Sarawak
 M Store @ Pavilion KL, Kuala Lumpur
 Mahkamah Miri & Komplex Islam (KIS) Miri, Sarawak
 Malaysia Parliament, Kuala Lumpur
 Mandarin Oriental Kuala Lumpur @ Business - Centre, Kuala Lumpur
 Marie France Bodyline, throughout Malaysia
 MCMC Kuching, Sarawak
 Menara ILHAM (ILHAM Tower), Kuala Lumpur
 Menara Shell @ KL Sentral, Kuala Lumpur
 Mercure Kota Kinabalu City Centre, Sabah
 Minimalist Hotel, Johor
 Miri Marriot Resort & Spa, Sarawak
 Mukah Sport Center, Sarawak
 Nandos Chickenland, Malaysia and Singapore
 New Zouk, Kuala Lumpur
 Novartis Office @ Plaza 33, Selangor
 OCBC Premium Banking (Nationwide)
 Olive Tree Hotel Penang, Malaysia
 One World Hotel, Damansara
 One&Only Reethi Rah, Maldives
 Parkson KLCC, Kuala Lumpur
 Parkson NU Sentral, Kuala Lumpur
 Pedro @ Gurney Paragon Mall, Penang
 Philips Malaysia, Petaling Jaya
 Platinum Casino, Genting Highlands, Pahang
 Platinum Suite Sales Gallery & Show Unit, Kuala Lumpur
 Plaza Premium Lounge, KLIA
 PPB Group Berhad Corporate Office, Kuala Lumpur
 Pusat Latihan Polis, Kuala Lumpur
 Pusat Pentadbiran Negeri Sabah, Kota Kinabalu, Sabah
 Putrajaya International Convention Centre, Putrajaya
 ReGen Rehabilitation International Hospital, PJ, Selangor
 Renaissance Hotel, Johor Bahru
 RH Hotel, Sibul, Sarawak
 Riverside Magestic Hotel, Kuching, Sarawak
 Sacofa Sdn Bhd - Kuching office, Sarawak
 Sekolah Seni Malaysia Santubong, Kuching, Sarawak
 Shangri-La's Rasa Ria Resort & Spa Kota Kinabalu, Sabah
 Sheraton PJ Hotel, Selangor
 Sime Darby Office, Kuching, Sarawak
 Sofitel Kuala Lumpur Damansara Hotel, Kuala Lumpur
 Somerset Serviced Residences, Ampang, Kuala Lumpur
 Sunway Summer Suites, Kuala Lumpur
 Sunway Monash Residence's Office, Bandar Sunway, Selangor
 Sunway Putra Hotel, Kuala Lumpur
 Sunway Putra Serviced Apartment, Kuala Lumpur
 Sunway Pyramid Hotel, Bandar Sunway
 Sunway University, Bandar Sunway, Selangor
 Sunway Velocity Hotel, Kuala Lumpur
 Suruhanjaya Syarikat Malaysia (SSM) Sarawak
 Tanahmas The Sibul Hotel, Sarawak
 The Coffee Bean & Tea Leaf, throughout Malaysia
 The Federal Hotel, Kuala Lumpur
 The Oval, KLCC, Kuala Lumpur
 The Saujana Hotel, Kuala Lumpur
 Traders Hotel, Johor Bahru
 Tribeca Bukit Bintang, Kuala Lumpur
 Unit Keselamatan Negeri Sarawak
 University of Reading, Johor
 Verve Suite, KL South Verve Suite, Month Kiara, Kuala Lumpur

Village Grocer, Melawati Mall & Bangsar - Outlets, Kuala Lumpur
 WATCHFINDERS @ Mid Valley Megamall, Kuala Lumpur
 Wild Honey @ Pavilion KL, Kuala Lumpur
 Xiao En Memorial Park, Nilai, Negeri Sembilan

THAILAND

AIS, Bangkok
 Akya Manor Suites Hotel, Chiang Mai, Thailand
 Amara Bangkok Hotel
 Avista Patong, Phuket, Thailand
 Bangkok Hospital
 Bangkok Airways office, Bangkok
 Bangkok Marriott Hotel The Surawongse
 Bangkok Marriott Marquis Queen's Park
 Bangkok Marriott Hotel The Surawongse
 Buttan Up Boutique Shop, Bangkok, Thailand
 Conrad hotels & Resorts
 Compass SkyView Hotel Sukhumvit 24
 CP Leadership
 Emquartier, Bangkok
 Habitat @Siam Discovery, Bangkok
 Holiday Inn Rayong
 H&M @ Central World, Bangkok
 Holiday Inn Express Sathorn Bangkok
 Holiday Inn & Suites Rayong City Centre
 Hua Hin Marriott Resort & Spa
 Ikea store, Bangkok
 Intercontinental Hotel, Bangkok
 JW Marriott Hotel Bangkok
 KTB Siam Paragon, Bangkok
 King Power, Bangkok
 Major Cineplex, Bangkok
 Marriott Queen's Park Hotel
 Major Office, Bangkok
 Melia Hotel (Hanoi, Vietnam)
 Plaza Athenee, Bangkok
 Praram 9 Hospital
 Regus Bhira Tower Bangkok
 Residential Khao Yai (Nakhon Ratchasima, Thailand)
 Renaissance Pattaya Resort & Spa
 Richmond Stylish Convention Hotel
 SB Design Square
 SK II Thailand
 St. Regis Bangkok, Thailand
 Skyview Bangkok
 Siam Kenpenski Hotel, Bangkok
 Siam Paragon, Bangkok
 The Athenee Hotel, a Luxury Collection Hotel, Bangkok
 Uniqlo store, Bangkok
 Villa Acadia Srinakarin, Bangkok
 W Hotel, Bangkok, Thailand
 Waldorf Astoria Bangkok
 Grand Hyatt
 Four Seasons Residence
 Nikko Hotel

UNITED ARAB EMIRATES

Al Raha Beach Hotel, Abu Dhabi
 Atmosphere Restaurant, Burj Khalifa
 Blue Water Hotel and Residences
 Caesars Palace, Blue Water Island
 Cheval Blanc Resort, Seychelles
 Cleveland Clinic, Abu Dhabi
 Creative Studio Office, Dubai
 Deira Water Front
 Desert Palm Hotel, Dubai
 Dorchester Residences
 Double Tree By Hilton, Karama Dubai
 Dubai Airport Expansion, Dubai
 Dubai Harbour Cruise Terminal
 Emirates Golf Club, Dubai
 Emirates Palace, Abu Dhabi
 Green Facilities Management Office, Dubai
 Hilton Garden Inn and Embassy Suite
 Holiday Inn and Stay Bridge
 Intercontinental Hotel, Luanda, Angola
 Izel Restaurant, Dubai
 Jebel Ali Hotel Commercial, Dubai
 JW Marriott Resort & Spa, Abu Dhabi
 Le Meridien Hotel Mina Seyahi
 Marsa Al Arab
 Mashreq Bank, Fujairah
 One Zabeel Hotel and Residences
 Oriental Expression Studio, Dubai
 Proglaf, Sharjah
 Pullman Hotel, Deira City Centre
 Ritz Carlton Hotel, Sheikh Zayed Road, Dubai
 Robert Allen Middle East Office, Dubai
 Rosewood Hotel, Qatar
 Seef Lusail, Qatar
 SLS Hotel and Residence
 State Audit Bureau, Doha, State of Qatar
 Sushi Samba Restaurant, Palm Jumeirah
 The Address Harbour Point
 The Address Downtown
 The Football Center, Dubai
 The Skyview Hotel Downtown
 VFS Global, Deira, Dubai
 Westin Mina Seyahi

OTHERS

Eclipse Phnom Penh, Cambodia Hotel
 Excellence Yangon, Myanmar
 Yangon Thanlwin Hotel, Myanmar
 Hoe Sen University, Hanoi, Vietnam
 Melia Hotel, Hanoi, Vietnam
 MGM Grand Hotel Ho Tram Beach Resort, Vung Tau, Vietnam
 MGM Ho Tram, Vietnam
 Renaissance Hotel, HCMC, Vietnam
 Melia Hotel, Hanoi, Vietnam
 The Horizon - Maputo, Mozambique, Africa
 Heritage Queenstown, New Zealand



Premierwall, Goodrich (Wallcovering)

GOODRICH GLOBAL Headquarters

SINGAPORE (HQ)

www.goodrichglobal.com

GOODRICH GLOBAL PTE LTD (OFFICE)

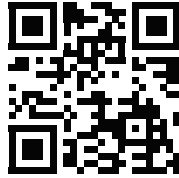
Goodrich Building,
8 Changi South Lane #05-01, Singapore 48611

T: (+65) 6787 8787 | F: (+65) 6788 7733
E: info@goodrichglobal.com

GOODRICH SINGAPORE (GALLERY)

Goodrich Building,
8 Changi South Lane #01-01, Singapore 48611

T: (+65) 6788 6868 | F: (65) 6586 8794
E: gallery@goodrichglobal.com.sg



www.goodrichglobal.com



Global Addresses

GOODRICH GLOBAL & SANGETSU GOODRICH Regional Offices & Galleries

MALAYSIA

www.goodrichglobal.com.my

JOHOR BAHRU, JOHOR (OFFICE)

Goodrich Global Sdn. Bhd
Infinity 8 Reserve Eco Palladium (Block A)
A-04-01, Pusat Perdagangan Ekoflora,
Jalan Ekoflora 7/3, Taman Ekoflora,
81100 Johor Bahru, Johor

T: (+603) 6201 5757 | F: (+603) 6201 8257
E: info@goodrichglobal.com.my

KUALA LUMPUR (OFFICE)

Goodrich Global Sdn. Bhd
Unit M-2-2, Block M, Plaza Damas,
Phase II, Jalan Sri Hartamas 1/70A,
50480 Kuala Lumpur, Malaysia

T: (+603) 6201 5757 | F: (+603) 6201 8257
E: info@goodrichglobal.com.my

KUALA LUMPUR (GALLERY)

A-0-3 & A-1-3, Block A, Plaza Damas, Jalan Sri
Hartamas 1, 50480 Kuala Lumpur, Malaysia.

T: (+603) 6211 9575
E: info@goodrichglobal.com.my

KUCHING, SARAWAK (OFFICE & GALLERY)

Goodrich Global Sdn. Bhd
No. 527 Ground Floor,
Jalan Ang Cheng Ho,
93100 Kuching, Sarawak, Malaysia

T: (+6082) 415 757 | F: (+6082) 255 757
E: info@goodrichglobal.com.my

THAILAND

www.sangetsu-goodrich.co.th

BANGKOK (OFFICE)

Sangetsu Goodrich (Thailand) Co.,Ltd.
23/77 Sorachai Building 20th Floor,
Soi Sukhumvit 63, Sukhumvit Road,
Klongton Nua, Wattana, Bangkok 10110

T: (66) 2115 1838 | F: (66) 2115 1354
E: info@sangetsu-goodrich.co.th

BANGKOK (GALLERY)

Sangetsu Goodrich Gallery Thailand
58 Soi Sukhumvit 63, Sukhumvit Road,
Klongton Nua, Wattana, Bangkok 10110

T: (66) 2381 7778 | F: (66) 2381 7773
E: info@sangetsu-goodrich.co.th

VIETNAM

www.sangetsu-goodrich.vn

HO CHI MINH CITY (OFFICE & GALLERY)

Sangetsu Goodrich Vietnam Co.,Ltd.
2nd Floor, Lant Building, No. 56-58-60 Hai Ba Trung Street,
Ben Nghe Ward, District 1, Ho Chi Minh City, Vietnam

T: +84 (0) 28 3520 2300 | F: +84 (0) 28 3520 2399
E: info@sangetsu-goodrich.vn

INDIA

MUMBAI (OFFICE & GALLERY)

Goodrich Global Furnishing India Pvt. Ltd.
5A/D Wing, Crystal Plaza, Opposite Infinity Mall
Andheri West 400053, India

T: (+91) 22 4264 5757 | F: (+91) 96 5038 5757
E: sumiaya.sharma@goodrichglobal.in

NEW DELHI (OFFICE & GALLERY)

Goodrich Global Furnishing India Pvt. Ltd.
804, 2nd Floor, Arjun Nagar, Kotla Mubarakpur,
Opp. Defence Colony, New Delhi - 110003, India

T: (Office): (+91) 11 4660 5757
T: (Gallery): (+91) 98 1106 0557 | F: (Gallery): (+91) 96 5087 6957
E: vincent.sandanadas@goodrichglobal.in

INDONESIA

JAKARTA (OFFICE)

Goodrich Suites Jakarta 2nd Floor
Jl. Pangeran Antasari No. 60, Cipete Utara,
Jakarta Selatan 12150, DKI Jakarta, Indonesia

T: (+62 21) 722 4345 | F: (+62 21) 724 6360
E: info@goodrichglobal.co.id

JAKARTA ANTASARI (GALLERY)

Goodrich Suites Jakarta 1st Floor,
Jl. Pangeran Antasari No. 60, Cipete Utara,
Jakarta Selatan 12150, DKI Jakarta, Indonesia

T: (+62 21) 725 5065
E: info@goodrichglobal.co.id

INDONESIA DESIGN DISTRICT PIK2 (GALLERY)

Jl. M. H. Thamrin T17, Salembaran.Kosambi,
Tangerang Regency, Banten 15214, Indonesia

T: (+62 21) 3970 9600
E: info@goodrichglobal.co.id

MALANG (OFFICE & GALLERY)

Terusan Dieng No. 39, Pisang Candi,
Sukun - Malang, Jawa Timur 65146, Indonesia

T: (+62 341) 563 500 | F: (+62 341) 562 141
E: info@goodrichglobal.co.id

SEMARANG (GALLERY)

Jl. Raung No.8, Gajahmungkur, Kec. Gajahmungkur,
Kota Semarang, Jawa Tengah 50232, Indonesia

T: (+62 24) 850 2063
E: info@goodrichglobal.co.id

SERPONG BSD (OFFICE & GALLERY)

Ruko Mendrisio 2B No. 26 - 27, Jl. Boulevard Illago
(BSD Raya Utama) BSD Serpong 15332,
Tangerang - Banten, Indonesia

T: (+62 21) 290 01036 / 40 | F: (+62 21) 290 01016
E: info@goodrichglobal.co.id

SURABAYA (GALLERY)

Jl. Jaksa Agung Suprpto No.24
Ketabang, Surabaya,
Jawa Timur 60272, Indonesia

T: (+62 31) 992 60046 , (+62 31) 992 60739
E: info@goodrichglobal.co.id

UNITED ARAB EMIRATES

DUBAI (OFFICE & WAREHOUSE)

Goodrich Global Trading LLC
Unit 1-13 Plot 598-1149,
Warehouse No. 6, Dubai Investment Park 1,
P.O. Box 304, Dubai United Arab Emirates

T: (+971) 4889 5770 | F: (+971) 4889 5771
E: info@goodrichglobal.ae

CHINA

www.goodrichglobal.com.cn

BEIJING (OFFICE)

Sangetsu Goodrich China Co., Ltd.
Rm.2106, A Block North Tower SOHO Shang Du,
8 East Bridge Road, Chaoyang District,
Beijing 100020, China-PRC

T: (+8610) 5869 3577 | F: (+8610) 6569 6893

GUANGZHOU (OFFICE)

Sangetsu Goodrich China Co., Ltd
Room 1303, Tower B, Zhongtai International Square,
No.161, Linhe Xi Road, Tianhe District, Guangzhou,
Guangdong, 510610, China-PRC

T: (+8620) 3820 2933

SHANGHAI (OFFICE & GALLERY)

Sangetsu Goodrich China Co Ltd.
25F, 137 Lane, XianXia Road,
ShengGao International Tower, ChangNing Area,
Shanghai 200051, China-PRC

T: (+8621) 6486 8877 | F: (+8621) 6469 1116

WUJIANG (OFFICE)

Sangetsu Goodrich China Co Ltd.
No. 788 Panlong Road,
Wujiang Economic Development Zone,
Jiangsu Province 215200, China-PRC

T: (+86512) 8687 5757 | F: (+86512) 8687 1202

HONG KONG (CHINA)

www.goodrichglobal.com.hk

HONG KONG (OFFICE & GALLERY)

Goodrich Global Ltd.
Units 902-904, 9/F., Tower 1, Cheung Sha Wan Plaza,
833 Cheung Sha Wan Road, Kowloon, Hong Kong
(Lai Chi Kok MTR Exit A)

T: (+852) 2668 5757
E: info@goodrichglobal.com.hk

