

PREMIERFLOOR

CODE | COSMIC | COSTA

2024 - 2027



GALACTIC TIDES



CODE

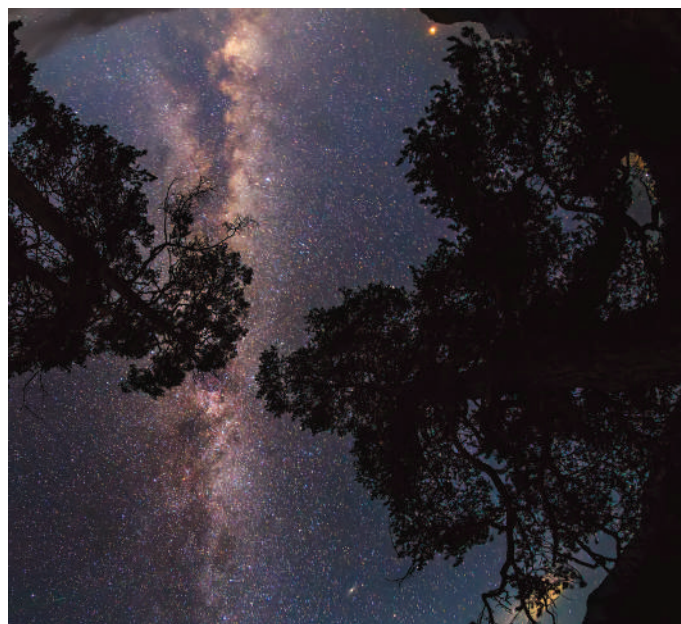
This design captures the essence of modern technology through a rich, multi-dimensional surface that invites both visual and tactile exploration.

The textures and interwoven lines symbolized the binary language of computers, while the shifting hues of Grey and beige mirrored the constant flux of information. With closer observation, the design reveals a hidden harmony - a visual representation of the structured chaos that governs the digital age

COSMIC

A complex interplay of raised and recessed patterns, creating a sensation of depth and movement reminiscent of drifting through the cosmos.

The collection reveals a sophisticated play and textures that mimic the vastness of space. The overall effect is one of quite elegance, evoking the vast, tranquil beauty of the universe without relying on literal imagery.



COSTA

"Costa" captures the essence of coastal landscapes through its rich textures and nuanced textures, offering a sensory experience that evokes the serene beauty of the shore without relying on literal imagery.

The design of "Costa" is a sophisticated interplay of tactile elements that suggest the gentle ebb and flow of the tide. Its surface features a harmonious blend of smooth and textured areas, creating a sensation akin to walking on a sandy shore or feeling the caress of ocean waves.

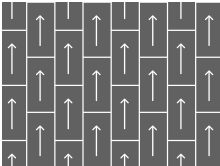
Technical Specification



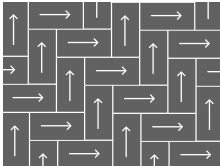
Collection Name	Code/Cosmic/Costa
Yarn	100% Nylon 6
Construction	Multi Level Loop
Dyed Method	Solution Dyed
Gauge	1/11 inch
Stitches Per Inch	12 per inch
Pile Height	3.5 mm+/-0.5 mm
Total Thickness	7.5 mm+/-0.5 mm
Pile Weight	19 oz/sy (645 gm/sm)
Total Weight	80 oz/sy (2700+/-200 gm/sm)
Secondary Backing	PVC FREE- ECOTEC® (80% post-consumer PET bottles)

Primary Backing	Non-woven
Tile Size	50 cm x 100 cm
Packing	20 pcs(10sm/box)
Colorfastness	Grade 5 = No Change (AATCC 16)
Flammability	Class I (ASTM E648)
Smoke Density	Passed (ASTM E662)
Static Propensity	≤3.5 kV (AATCC-134)
Sound Absorption	ASTM C423 NRC 0.25 or Higher
SGBC	Leader ✓✓✓✓
Declare Label	Declare Certified
Warranty	10 Years
Wear Classification	Heavy

Installation Methods:



Ashlar



Herringbone

- * Specifications are based on average normal manufacturing tolerances, variations do not affect product performance. As with all quality carpets, slight variations in colors may occur from dye lot to dye lot.
- * Protective chair pads are recommended under office chairs with roller castors to preserve appearance retention and to avoid excessive wear.
- * As with all dyed products, colors are subject to dye lot variations.

ECOTEC®

Carpet Tile Backing

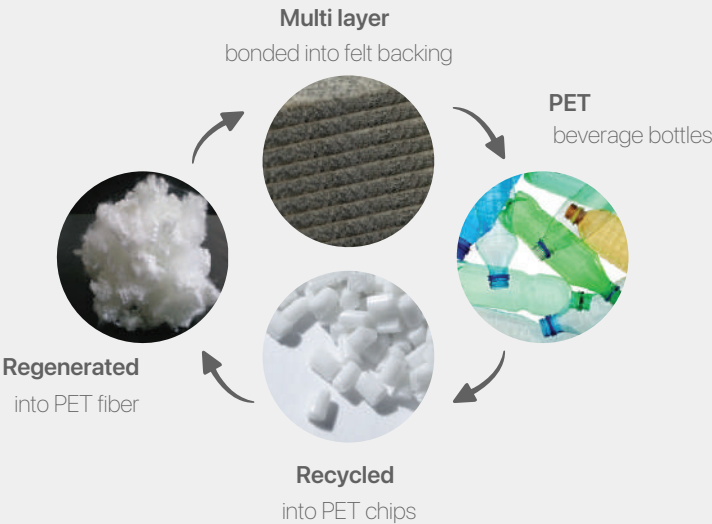


- Nylon Fiber
- Non-Woven Primary Backing
- High Performance Precoat
- Thermoplastic Compound
- Fiberglass Compound

ECOTEC® Felt Backing
(recycled from PET drinking bottles)

ADVANTAGES :

- Eco friendly
- 100% recyclable
- Cushioning effect absorbs foot impact and enhances carpet durability
- Superior sound absorbency results in quieter enviroment
- Soft cushion effect enhances walking comfort and reduces leg fatigue.
- Clean indoor air quality
- Superior dimensional stability
- PVC Free, bitumen free



Code



COD18 Cream



COD19 Silver



COD07 Grey



COD09 Pewter



COD13 Steel

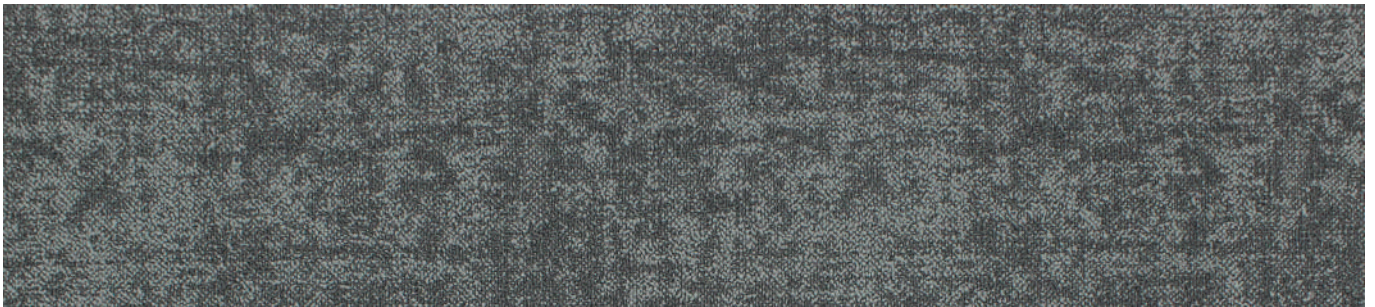
Cosmic



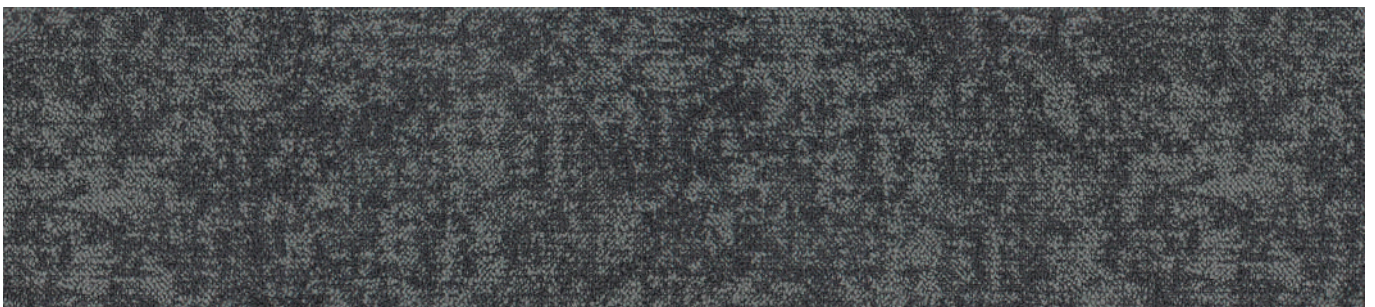
CM18 Cream



CM19 Silver



CM07 Grey



CM09 Pewter

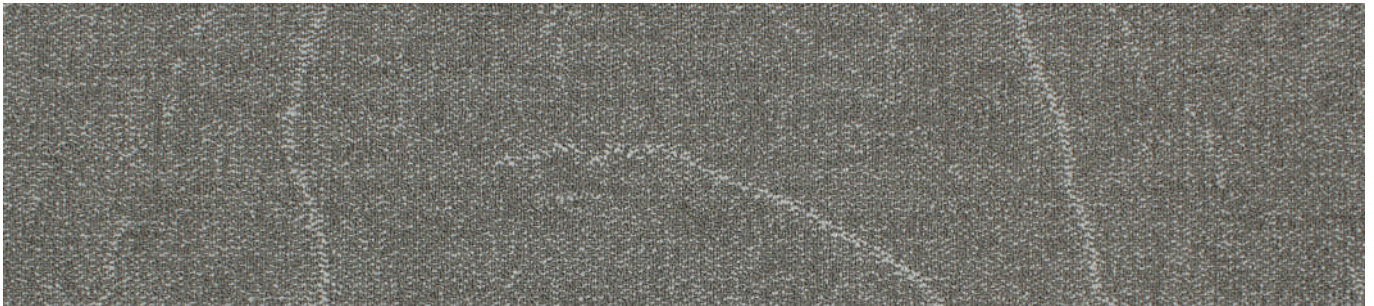


CM13 Steel

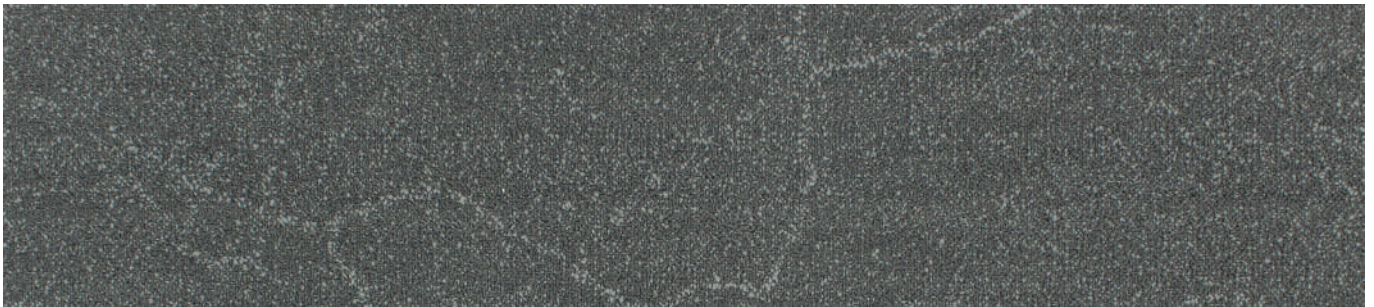
Costa



COS18 Cream



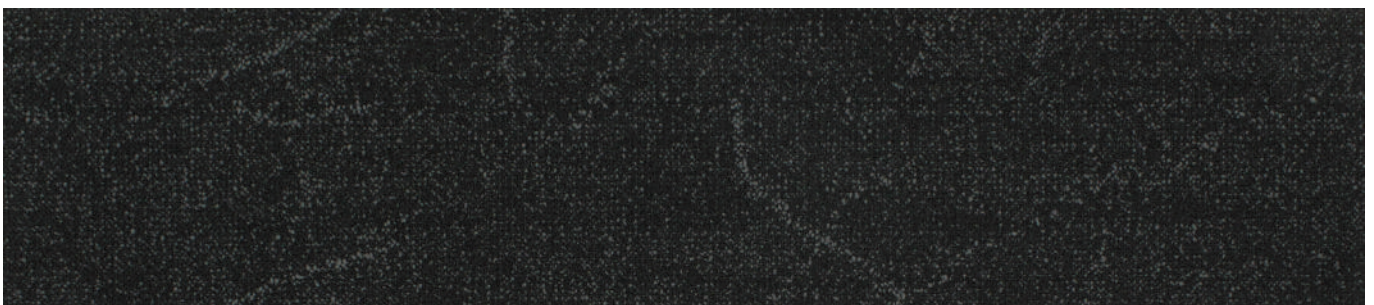
COS19 Silver



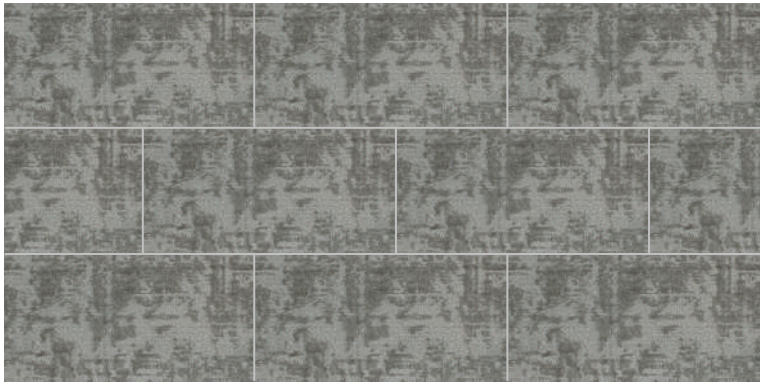
COS07 Grey



COS09 Pewter

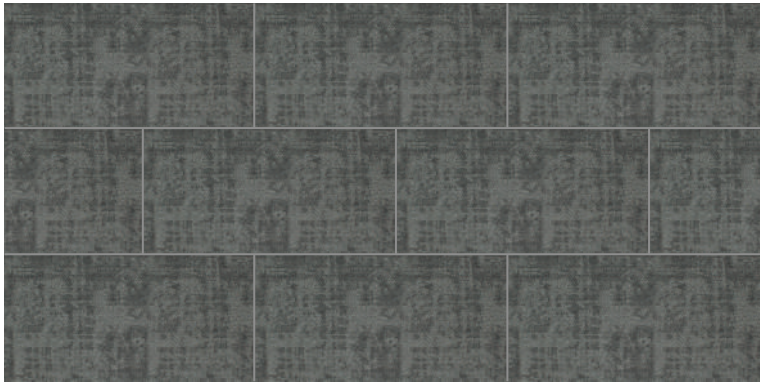


COS13 Steel



**Collection
Item Name**

Code
COD19 Silver



**Collection
Item Name**

Code
COD07 Grey

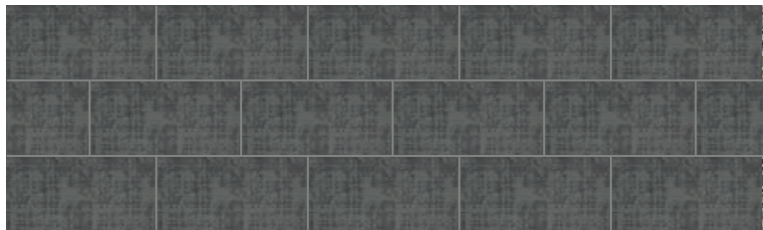


Random Monolithic



Collection
Item Name

Code
COD19 Silver



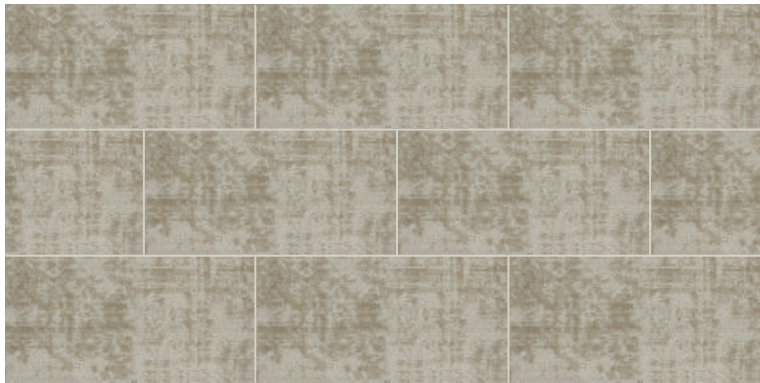
Collection
Item Name

Code
COD09 Pewter



Collection
Item Name

Code
COD13 Steel



Collection
Item Name

Code
COD18 Cream



Collection
Item Name

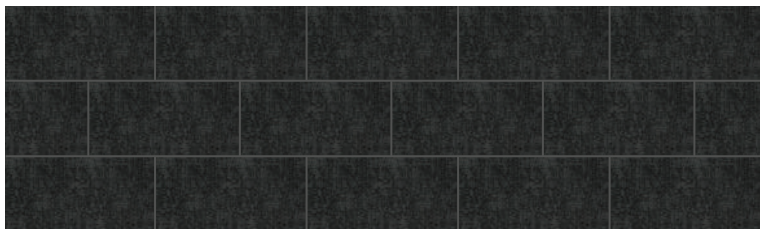
Code
COD19 Silver



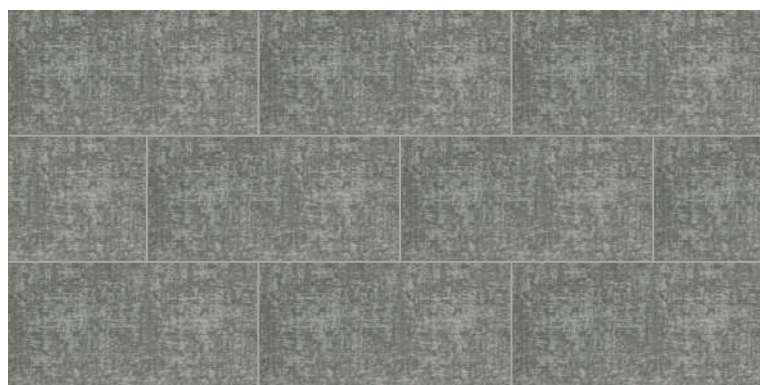
Collection Cosmic
Item Name CM07 Grey



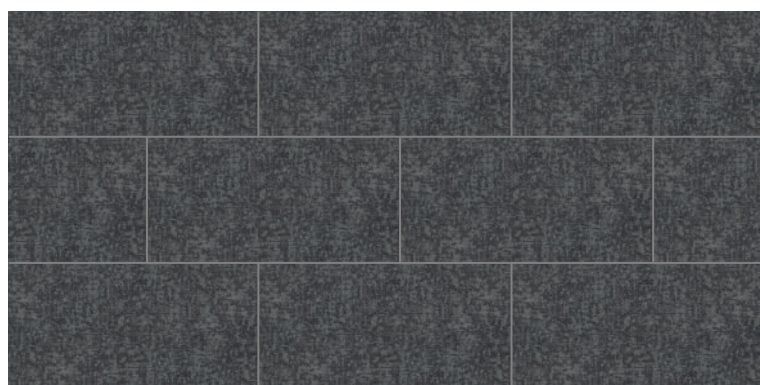
Collection Cosmic
Item Name CM09 Pewter



Collection Cosmic
Item Name CM13 Steel



Collection Cosmic
Item Name CM19 Silver



Collection Cosmic
Item Name CM09 Pewter



Monolithic



Collection
Item Name

Cosmic
CM18 Cream



Ashlar



Collection
Item Name

Cosmic
CM19 Silver



Random Ashlar



**Collection
Item Name**

Costa
COS07 Grey



Monolithic



Collection	Costa
Item Name	COS18 Cream



Stay Connected

www.goodrichglobal.com | info@goodrichglobal.com

 [/goodrich_global](https://www.instagram.com/goodrich_global)

 [/goodrichglobal](https://www.pinterest.com/goodrichglobal)

 [/Goodrich.Global.Singapore](https://www.facebook.com/Goodrich.Global.Singapore)

 [/Goodrich.Global](https://www.linkedin.com/company/Goodrich.Global)

 [/goodrichglobal](https://www.tiktok.com/goodrichglobal)

 [/GoodrichGlobalOfficial](https://www.youtube.com/GoodrichGlobalOfficial)