

# PREMIERFLOOR

CODE | COSMIC | COSTA

2024 - 2027



# GALACTIC TIDES



## CODE

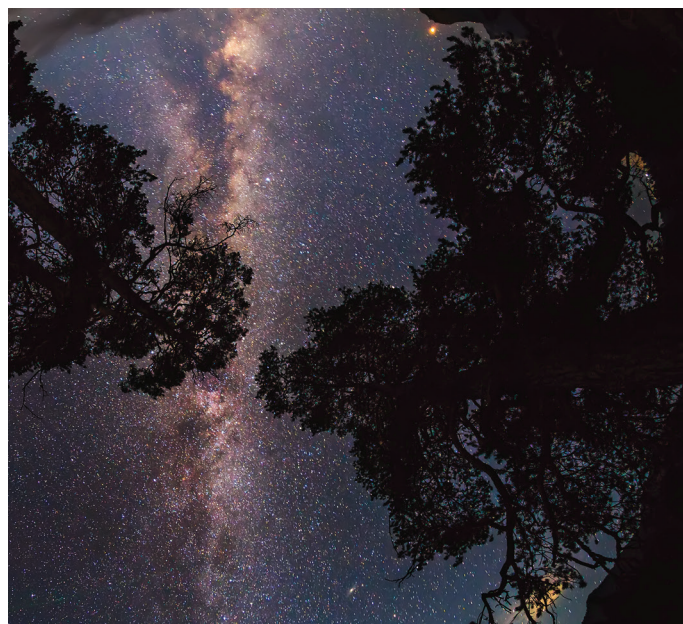
This design captures the essence of modern technology through a rich, multi-dimensional surface that invites both visual and tactile exploration.

The textures and interwoven lines symbolized the binary language of computers, while the shifting hues of Grey and beige mirrored the constant flux of information. With closer observation, the design reveals a hidden harmony - a visual representation of the structured chaos that governs the digital age

## COSMIC

A complex interplay of raised and recessed patterns, creating a sensation of depth and movement reminiscent of drifting through the cosmos.

The collection reveals a sophisticated play and textures that mimic the vastness of space. The overall effect is one of quite elegance, evoking the vast, tranquil beauty of the universe without relying on literal imagery.



## COSTA

"Costa" captures the essence of coastal landscapes through its rich textures and nuanced textures, offering a sensory experience that evokes the serene beauty of the shore without relying on literal imagery.

The design of "Costa" is a sophisticated interplay of tactile elements that suggest the gentle ebb and flow of the tide. Its surface features a harmonious blend of smooth and textured areas, creating a sensation akin to walking on a sandy shore or feeling the caress of ocean waves.





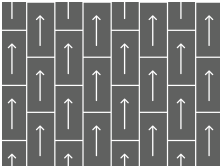
# Technical Specification



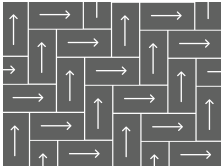
|                   |  |
|-------------------|--|
| Collection Name   | Code/Cosmic/Costa                                    |
| Yarn              | 100% Nylon 6   |
| Construction      | Multi Level Loop                                     |
| Dyed Method       | Solution Dyed  |
| Gauge             | 1/11 inch  |
| Stitches Per Inch | 12 per inch  |
| Pile Height       | 3.5 mm+/-0.5 mm                                      |
| Total Thickness   | 7.5 mm+/-0.5 mm                                      |
| Pile Weight       | 19 oz/sy (645 gm/sm)                                 |
| Total Weight      | 90 oz/sy (2700+/-200 gm/sm)                          |
| Secondary Backing | PVC FREE- ECOTEC®<br>(80% post-consumer PET bottles) |

|                     |                                |
|---------------------|--------------------------------|
| Primary Backing     | Non-woven                      |
| Tile Size           | 50 cm x 100 cm                 |
| Packing             | 20 pcs(10sm/box)               |
| Colorfastness       | Grade 5 = No Change (AATCC 16) |
| Flammability        | Class I (ASTM E648)            |
| Smoke Density       | Passed (ASTM E662)             |
| Static Propensity   | ≤3.5 kV (AATCC-134)            |
| Sound Absorption    | ASTM C423 NRC 0.25 or Higher   |
| SGBC                | Leader ✓✓✓✓                    |
| Declare Label       | Declare Certified              |
| Warranty            | 10 Years                       |
| Wear Classification | Heavy                          |

### Installation Methods:



Ashlar



Herringbone

- \* Specifications are based on average normal manufacturing tolerances, variations do not affect product performance. As with all quality carpets, slight variations in colors may occur from dye lot to dye lot.
- \* Protective chair pads are recommended under office chairs with roller castors to preserve appearance retention and to avoid excessive wear.
- \* As with all dyed products, colors are subject to dye lot variations.

## ECOTEC®

Carpet Tile Backing

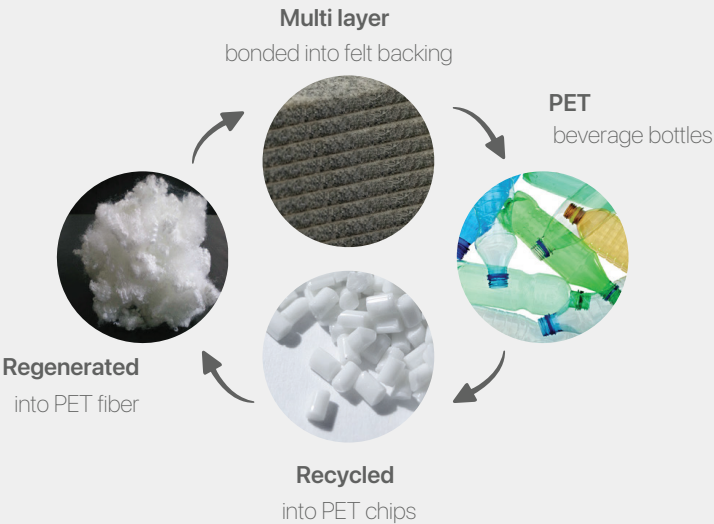


- Nylon Fiber
- Non-Woven Primary Backing
- High Performance Precoat
- Thermoplastic Compound
- Fiberglass Compound

ECOTEC® Felt Backing  
(recycled from PET drinking bottles)

### ADVANTAGES :

- Eco friendly
- 100% recyclable
- Cushioning effect absorbs foot impact and enhances carpet durability
- Superior sound absorbency results in quieter enviroment
- Soft cushion effect enhances walking comfort and reduces leg fatigue.
- Clean indoor air quality
- Superior dimensional stability
- PVC Free, bitumen free





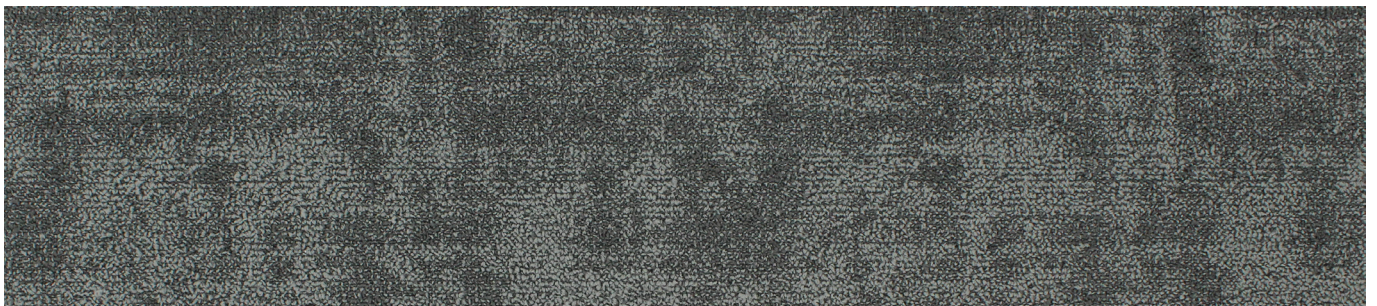
Code



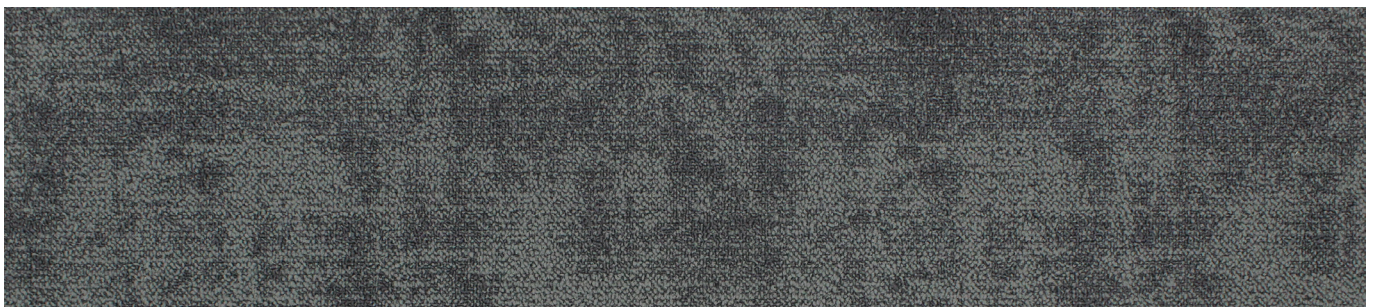
**COD18** Cream



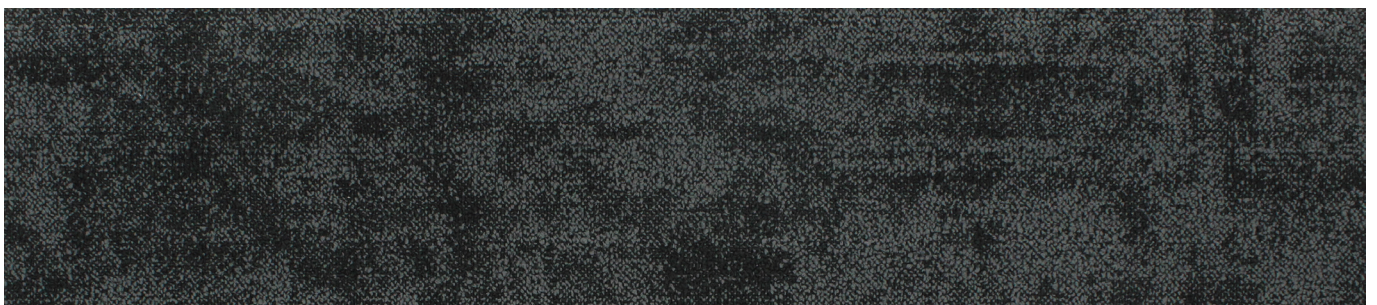
**COD19** Silver



**COD07** Grey



**COD09** Pewter



**COD13** Steel



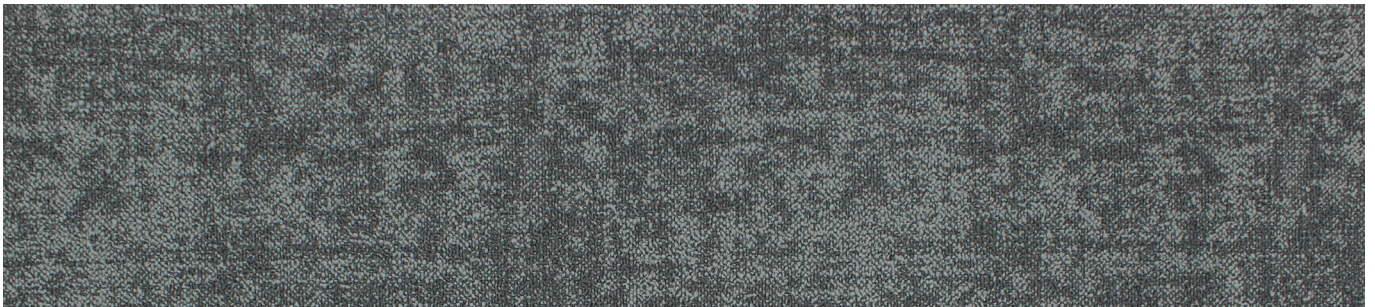
Cosmic



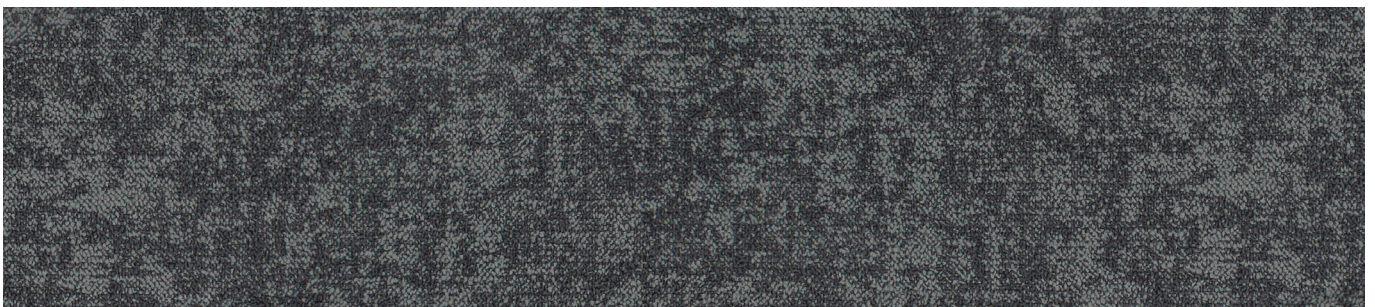
**CM18** Cream



**CM19** Silver



**CM07** Grey



**CM09** Pewter



**CM13** Steel



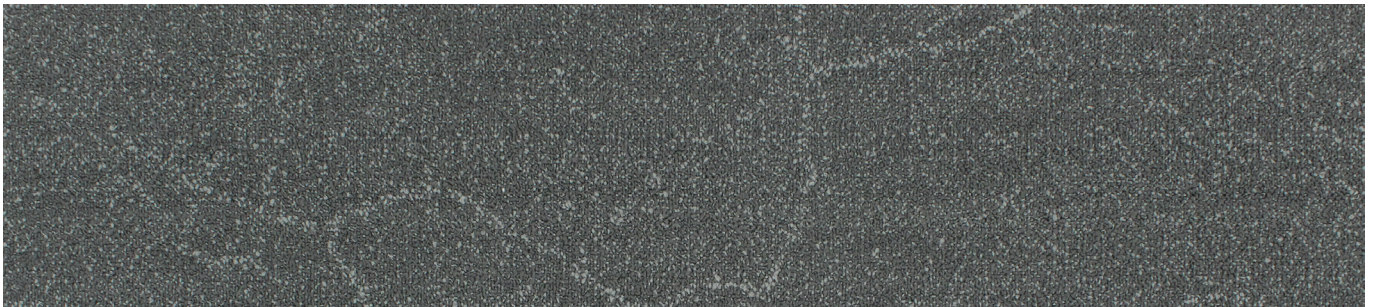
Costa



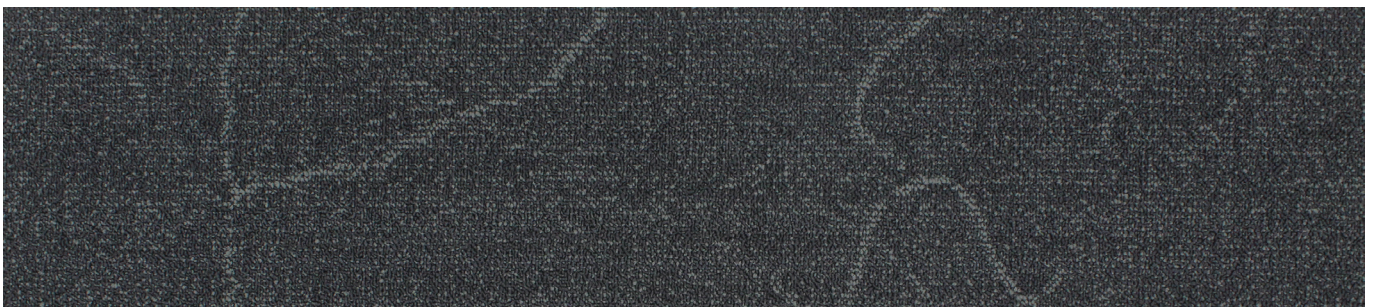
**COS18** Cream



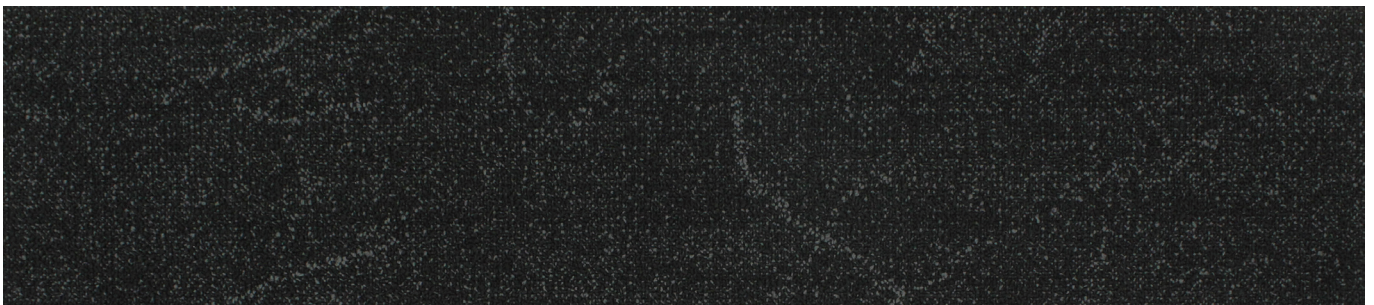
**COS19** Silver



**COS07** Grey



**COS09** Pewter



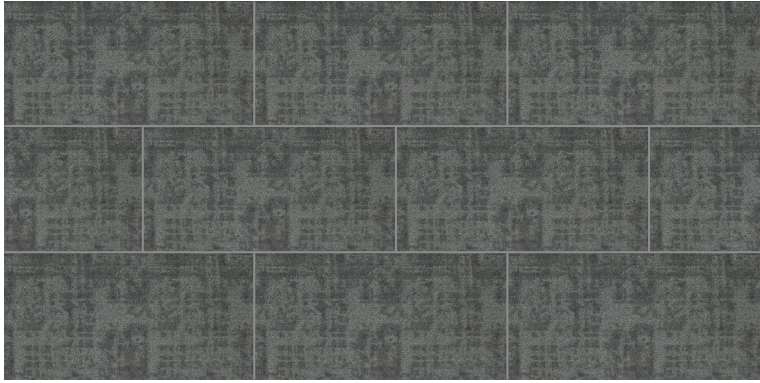
**COS13** Steel





**Collection  
Item Name**

Code  
COD19 Silver



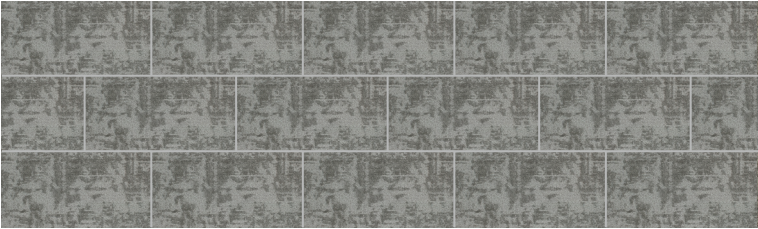
**Collection  
Item Name**

Code  
COD07 Grey





Random Monolithic



**Collection**  
**Item Name**      Code  
COD19 Silver

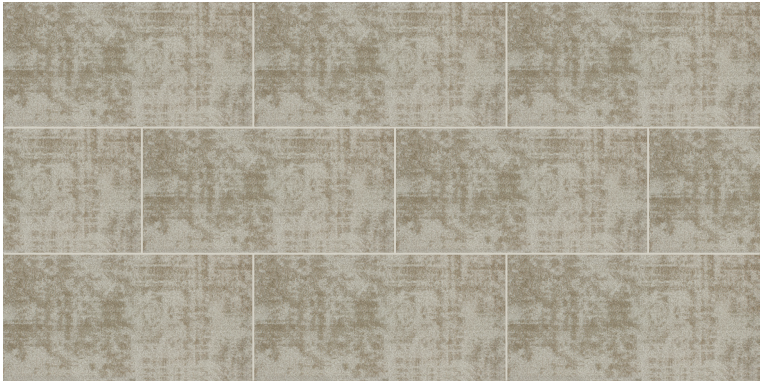


**Collection**  
**Item Name**      Code  
COD09 Pewter



**Collection**  
**Item Name**      Code  
COD13 Steel





**Collection  
Item Name**

Code  
COD18 Cream



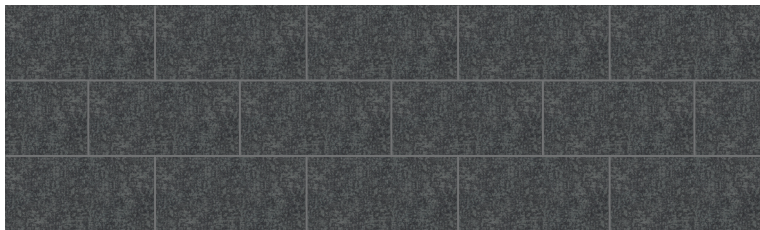
**Collection  
Item Name**

Code  
COD19 Silver

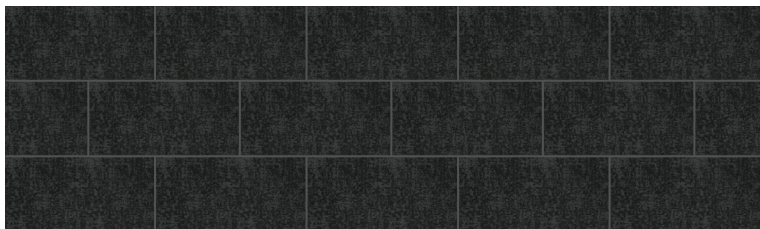




**Collection** Cosmic  
**Item Name** CM07 Grey

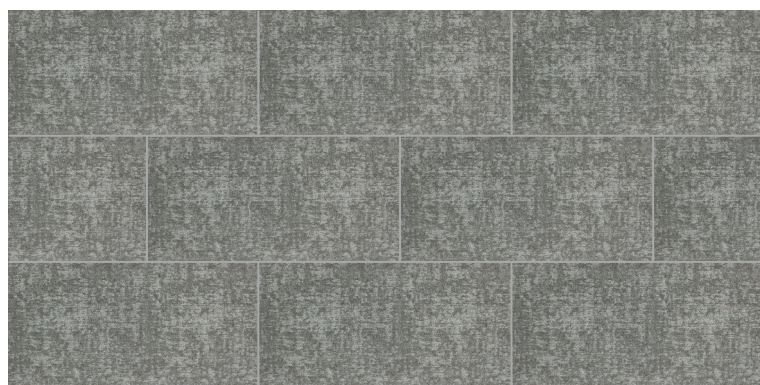


**Collection** Cosmic  
**Item Name** CM09 Pewter



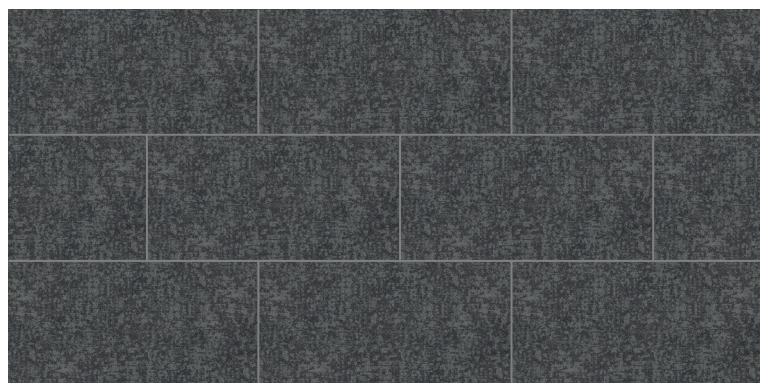
**Collection** Cosmic  
**Item Name** CM13 Steel





**Collection**  
**Item Name**

Cosmic  
CM19 Silver



**Collection**  
**Item Name**

Cosmic  
CM09 Pewter





Monolithic



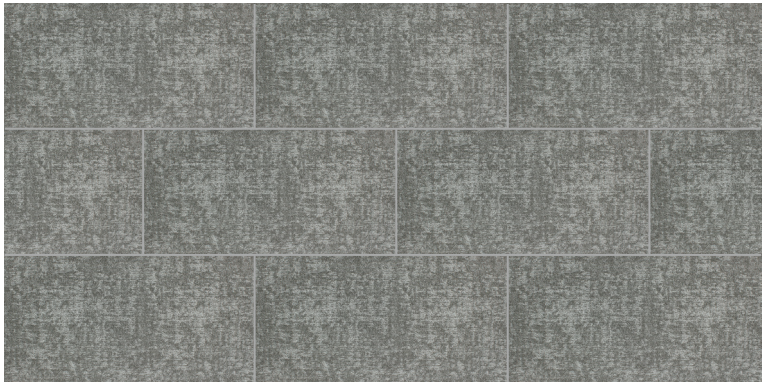
**Collection**  
**Item Name**

Cosmic  
CM18 Cream





Ashlar



**Collection**  
**Item Name**

Cosmic  
CM19 Silver





Random Ashlar



**Collection**  
**Item Name**

Costa  
COS07 Grey





Monolithic



|                   |             |
|-------------------|-------------|
| <b>Collection</b> | Costa       |
| <b>Item Name</b>  | COS18 Cream |





**Stay Connected**

[www.goodrichglobal.com](http://www.goodrichglobal.com) | [info@goodrichglobal.com](mailto:info@goodrichglobal.com)

 [/goodrich\\_global](https://www.instagram.com/goodrich_global)

 [/goodrichglobal](https://www.pinterest.com/goodrichglobal)

 [/Goodrich.Global.Singapore](https://www.facebook.com/Goodrich.Global.Singapore)

 [/Goodrich.Global](https://www.linkedin.com/company/Goodrich.Global)

 [/goodrichglobal](https://www.tiktok.com/goodrichglobal)

 [/GoodrichGlobalOfficial](https://www.youtube.com/GoodrichGlobalOfficial)