

PRODUCT CATALOG

APAC Portfolio



Goodrich Global
SINCE 1983



BELIEVE IN BETTER™



Mohawk Industries is the world's largest, most comprehensive flooring manufacturer.



\$11.2 B

In Global
Sales



43,000 +

Associates
Worldwide



170 +

Countries With
Sales & Operations

Ceramic Tile | Residential Carpet | Commercial Carpet | Area Rugs, Bath Rugs & Mats |
Laminate Flooring | Luxury Vinyl Tile | Sheet Vinyl | Wood Flooring | Countertops



19

Countries With
Manufacturing Facilities



25,000 +

Products With
Recycled Content



25,000 +

Customers
Worldwide

Mohawk Family of Brands



Product Brands

Carpet



Rugs



Ceramic tile/ Stone



Ceramic tile/ERT



Wood



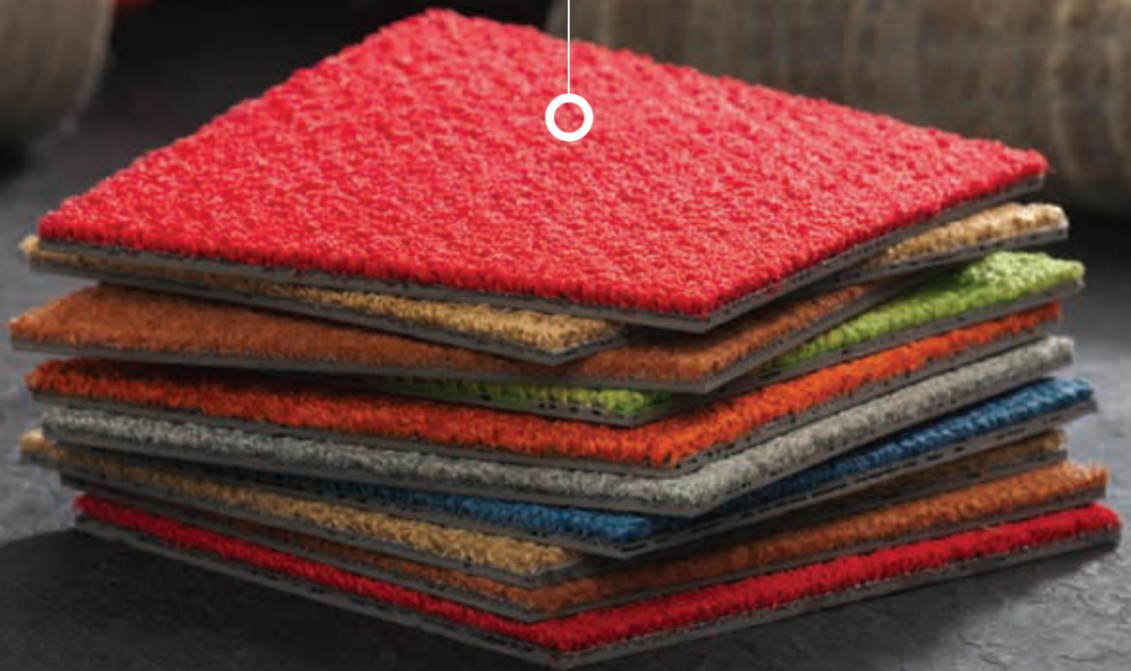
Furniture





FOREVER

STAIN FREE • SUSTAINABLE • BEAUTIFUL



 Mohawk Group

duracolor
FOREVER STAIN FREE

STAIN RESISTANCE THE SCIENCE



Common Nylon

The most common stains are caused by acid-based substances that carry a negative charge. Since most fibers are positively charged, the negatively charged acid-based substances are attracted to the opposite charge of the fibers and bond, creating a stain.



Duracolor Tricor

Duracolor Tricor fiber utilizes negatively charged polymers. The negative charge of the polymer ensures that the fiber, through its inherent characteristics, will repel negatively charged substances. The fiber never allows the common stain makers to bond, so the carpet resists the stain.

TRUSTED PERFORMANCE

Duracolor fiber has set the standard of high-performance commercial carpet since 1992.

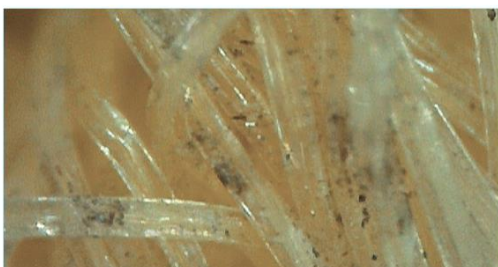
With enhanced soil hiding and removal capabilities, Duracolor Tricor builds upon a fiber already trusted to perform in demanding environments. When compared head to head to competitive nylon products, Duracolor Tricor delivers trusted performance.



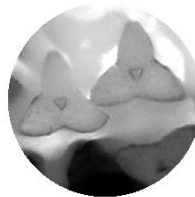
Common Nylon Fiber



NEW CARPET WITH NO SOIL EXPOSURE



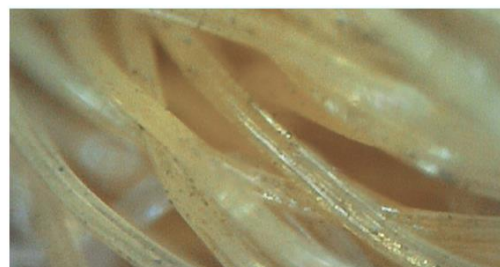
CARPET EXPOSED TO SOIL,
CLEANED USING VACUUM ONLY



Duracolor Tricor Fiber



NEW CARPET WITH NO SOIL EXPOSURE



CARPET EXPOSED TO SOIL,
CLEANED USING VACUUM ONLY



EcoFlex™ ONE

The **ALL-IN-ONE** Flooring Solution

Certified Sustainable

100%

Carbon Neutral plus an additional 5% carbon offset

50%

Reduction in **embodied carbon emissions** from manufacturing EcoFlex ONE

74%

Minimum total **recycled content** in EcoFlex ONE modular carpet

28

Plastic bottles (equivalent) diverted from landfill in every square yard of EcoFlex ONE modular carpet

Certifications

NSF 140 Platinum
Living Product Challenge Certified
Red List Free
CRI GreenLabel Plus
EPD | HPD

EcoFlex ONE is a state-of-the-art backing system that improves every aspect of comfort and acoustics while eliminating moisture testing—all with a lighter environmental footprint that is Beyond Carbon Neutral. Tested, proven, and certified, EcoFlex ONE is the holistic solution for human-centric environments.

EcoFlex ONE gets it done.

Improved Acoustics

- Virtually no sound transmission between floors, IIC rating of 72¹
- 16x quieter than concrete, drastically reducing in-room noise
- Reduces auditory distractions and contributes to feelings of well-being

Enhanced Comfort

- Integrated cushion provides greater comfort when standing and walking
- Helps reduce fatigue to support occupant efficiency and productivity

Worry-Free Installation

- No moisture testing required,² eliminating mitigation time and costs
- No need to remove existing flooring adhesives
- No transition strips required when used with 4.5 or 5 mm LVT

Simplified Maintenance

- Duracolor® Tricor fiber engineered to hide soil and release soil easily for cleaning
- Permanent, built-in stain resistance won't wash or wear off
- Unsurpassed durability resists crushing, delivering longer life-cycle

1. IIC result on 6" concrete slab with ceiling

2. No moisture testing required provided no visible moisture present. See Mohawk Group installation guidelines for additional details.

EcoFlex™ ONE

ALL-IN-ONE FLOORING SOLUTION

Every element in the EcoFlex™ ONE construction has purpose, and combined they form the industry's leading modular carpet solution. The hydrophobic PET cushion, backing layers, and Duracolor Tricolor fiber are engineered with your end-goals in mind: to optimize your investment, be sustainably made, and provide a better occupant experience.

KEY FEATURES

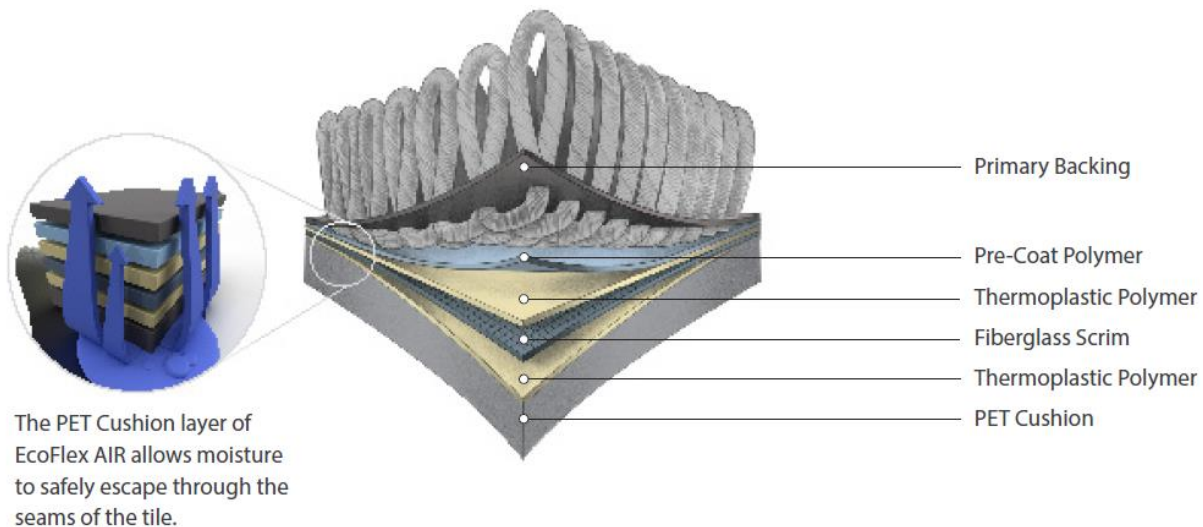
- Better Acoustics
- Enhanced Comfort
- Worry-Free Installation
- Simplified Maintenance
- NSF 140 Platinum
- Carbon Neutral +5%
- Limited Lifetime Warranty

EcoFlex™ ONE is a unified solution to the wide range of needs in your spaces. This advanced backing system improves every aspect of comfort and acoustics while eliminating moisture testing—all with a lighter environmental footprint that is carbon neutral plus an additional 5% offset. Tested and proven, EcoFlex™ ONE is the holistic solution for human-centric environments.



EcoFlexTM AIR

CARPET TILE BACKING WITH ATTACHED CUSHION



PERFORMANCE

- Tiles are impervious to moisture damage from spills and water extraction cleaning
- Allows subfloor moisture vapor to flow through the backing and escape from the seams**
- Provides permanent tile dimensional stability
- Noise Reduction Coefficient = 0.25; carpet tiles absorb 25% of ambient sound
- Impact Insulation Class—up to 73
- Performs up to 2x better reducing sound transmission than hard surfaces
- Construction features superior tuft bind that is highly resistant to edge ravel
- Reduces the risk of severe injury in the event of a slip or fall

SUSTAINABILITY

- EcoFlex AIR is Beyond Carbon Neutral, meaning 100% neutral plus an additional 5% for a net-positive impact on the climate.
- PET Cushion layer of EcoFlex AIR contains a minimum of 90% post-consumer recycled content.
- Certified NSF/ANSI 140 Gold with a minimum of 13% post-consumer and 46% pre-consumer recycled content.
- EcoFlex AIR may contribute to LEED v4, Living Building Challenge and the WELL Building Standard
- Contains no plasticizers
- Red List Free

THE CLIMATE PLEDGE

To date, more than 300 diverse businesses have committed to The Climate Pledge. **Mohawk Group was one of the first** flooring companies to sign the pledge.

1. Measure Footprint

Life Cycle Assessment
Manufacturing Data
Supplier Data

2. Reduce Footprint

Dematerialization
Recycled Content
Process Improvements

3. Net Positive Pathways

Credible Offsets
RECs/PPA
Biogenic Material

Sustainability Estimator

- Assess the environmental and social impact of flooring projects
- Highlights aspects of EPD certifications
- Provides building and product certifications, carbon, water, and social impact data

Scorecard

Product Certifications:



Building Certifications:



Net positive carbon impact

5.83 mt/CO₂e

Your project removes more carbon from the atmosphere than is emitted in production.

Carbon Handprint

122.37 mt/CO₂e

We reinvest 105% of the carbon footprint in global carbon equity projects.

Carbon Footprint

116.54 mt/CO₂e

This is the amount of carbon, in metric tons, emitted from raw material extraction and manufacturing processes.

Net positive water impact

7,028 gallons

Your project restores this many gallons beyond what it takes to produce.

Water Handprint

147,588 gallons

We reinvest 105% of the water footprint in global Water equity projects.

Water Footprint

140,560 gallons

This is the amount of water used in the raw material extraction and manufacturing processes.

Check out the Sustainability Estimator

<https://www.mohawkgroup.com/estimator>

CONTENTS

01 | Prime Picks (Open spaces)

02 | Make to Order (Open spaces)

03 | Luxe Select (Exclusive spaces)



Prime Picks



➤ Prime Picks

Collection	Style	Size mm	China made backing
Art Exposure	Academic View	609*609	EcoFlex Air
Art Exposure	Enlivened	609*609	EcoFlex Air
Art Exposure	Adaptable	609*609	EcoFlex Air
Art Style	Metallic Path	305*914	EcoFlex Air
Art Style	Shared Path	305*914	EcoFlex Air
Art Style	Disruptive Path	305*914	EcoFlex Air
Color Balance	Color Balance	305*914	EcoFlex One
Crossing Current	Refined Pass	609*609	EcoFlex Air
Crossing Current	Filtering Form	609*609	EcoFlex Air
Nutopia 2.0	Urban Terrian	305*914	EcoFlex One
Nutopia 2.0	Urban Transit	305*914	EcoFlex One
Optic Reset	Field of View Dark	305*914	EcoFlex One
Optic Reset	Field of View Light	305*914	EcoFlex One
Optic Reset	Shifted Focus	305*914	EcoFlex One
Renegade	Headstrong	609*609	EcoFlex Air
Renegade	Riot	609*609	EcoFlex Air
Renegade	Insurgent	609*609	EcoFlex Air
Shape Theory	Corresponding Angle	609*609	EcoFlex Air
Shape Theory	Cartesian Plane	609*609	EcoFlex Air
Sketch Effect	Framed Structure	609*609	EcoFlex Air
Sketch Effect	Shaded Lines	609*609	EcoFlex Air
Substratum	Natural Networks	609*609	EcoFlex One
Substratum	Base Layer	609*609	EcoFlex One
Timeless Tailored	Visual Connections	305*914	EcoFlex One
Timeless Tailored	Distressed Twill	305*914	EcoFlex One
Timeless Tailored	Unexpected detail	305*914	EcoFlex One
Visual Edge	Angled Perception	305*914	EcoFlex Air
Visual Edge	Hidden Dimension	305*914	EcoFlex Air



DESIGN

Tufted Pile Weight:	17 oz/yd2 (576 g/m2)
Product Type:	Tile
Construction:	Tufted
Minimum Sq. Yd.:	No Minimum
Surface Texture:	Textured Patterned Multi-Colored Loop
Gauge:	1/12 (47.00 rows per 10 cm)
Density:	6,725
Weight Density:	114,625
Stitches Per Inch:	12.0 (47.24 per 10 cm)
Total Thickness:	6.9 mm
Dye Method:	Solution Dyed
Backing Material:	EcoFlex Air
Fiber Type:	Colorstrand® SD Nylon
Pattern Repeat:	Not Applicable
Size:	24" x 24" (.6096 m x .6096 m)
Installation Method:	Quarter Turn, Vertical Ashlar, Brick Ashlar, Monolithic, Multi Directional
Stain Release Technology:	Sentry Plus Stain Protection
Soil Release Technology:	Sentry Soil Protection
Foot Traffic Recommendation TARR:	Heavy

SUSTAINABILITY

Material Health:	Declare
NSF 140:	EcoFlex Air-NSF 140 Platinum
EPD:	EcoFlex Air EPD
Indoor Air Quality:	GLP 1170

PERFORMANCE

Static:	AATCC-134 Under 3.5 KV
Flammability:	ASTM E 648 Class 1(Glue Down)
Smoke Density:	ASTM E 662 Less than 450

SERVICE

Warranties:	Lifetime Limited Carpet Tile Warranty
-------------	---------------------------------------



569
Cadet



853
Fallow



924
Platinum



958
Ecru



959
Slate



989
Charcoal





DESIGN

Tufted Pile Weight:	17 oz/yd2 (576 g/m2)
Product Type:	Tile
Construction:	Tufted
Minimum Sq. Yd.:	No Minimum
Surface Texture:	Textured Patterned Multi-Colored Loop
Gauge:	1/12 (47.00 rows per 10 cm)
Density:	6,580
Weight Density:	111,860
Stitches Per Inch:	12.0 (47.24 per 10 cm)
Total Thickness:	6.9 mm
Dye Method:	Solution Dyed
Backing Material:	EcoFlex Air
Fiber Type:	Colorstrand® SD Nylon
Pattern Repeat:	Not Applicable
Size:	24" x 24" (.6096 m x .6096 m)
Installation Method:	Quarter Turn, Vertical Ashlar, Brick Ashlar, Monolithic, Multi Directional
Stain Release Technology:	Sentry Plus Stain Protection
Soil Release Technology:	Sentry Soil Protection
Foot Traffic Recommendation TARR:	Heavy

SUSTAINABILITY

Material Health:	Declare
NSF 140:	EcoFlex Air-NSF 140 Platinum
EPD:	EcoFlex Air EPD
Indoor Air Quality:	GLP 1170

PERFORMANCE

Static:	AATCC-134 Under 3.5 KV
Flammability:	ASTM E 648 Class 1(Glue Down)
Smoke Density:	ASTM E 662 Less than 450

SERVICE

Warranties:	Lifetime Limited Carpet Tile Warranty
-------------	---------------------------------------



569
Cadet



853
Fallow



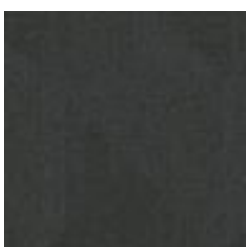
924
Platinum



958
Ecru



959
Slate



989
Charcoal





DESIGN

Tufted Pile Weight:	17 oz/yd ² (576 g/m ²)
Product Type:	Tile
Construction:	Tufted
Minimum Sq. Yd.:	No Minimum
Surface Texture:	Textured Patterned Multi-Colored Loop
Gauge:	1/12 (47.00 rows per 10 cm)
Density:	6,181
Weight Density:	105,077
Stitches Per Inch:	12.0 (47.24 per 10 cm)
Total Thickness:	6.9 mm
Dye Method:	Solution Dyed
Backing Material:	EcoFlex Air
Fiber Type:	Colorstrand® SD Nylon
Pattern Repeat:	Not Applicable
Size:	24" x 24" (.6096 m x .6096 m)
Installation Method:	Vertical Ashlar, Quarter Turn, Multi Directional
Stain Release Technology:	Sentry Plus Stain Protection
Soil Release Technology:	Sentry Soil Protection
Foot Traffic Recommendation TARR:	Heavy

SUSTAINABILITY

Material Health:	Declare
NSF 140:	EcoFlex Air-NSF 140 Platinum
EPD:	EcoFlex Air EPD
Indoor Air Quality:	GLP 1170

PERFORMANCE

Static:	AATCC-134 Under 3.5 KV
Flammability:	ASTM E 648 Class 1(Glue Down)
Smoke Density:	ASTM E 662 Less than 450

SERVICE

Warranties:	Lifetime Limited Carpet Tile Warranty
-------------	---------------------------------------



569
Cadet



853
Fallow



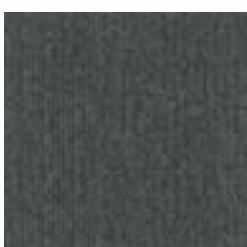
924
Platinum



958
Ecru



959
Slate



989
Charcoal





DESIGN

Tufted Pile Weight:	17 oz/yd2 (576 g/m2)
Product Type:	Tile
Construction:	Tufted
Minimum Sq. Yd.:	No Minimum
Surface Texture:	Textured Patterned Multi-Colored Loop
Gauge:	1/12 (47.00 rows per 10 cm)
Density:	8,383
Weight Density:	142,520
Stitches Per Inch:	12.0 (47.24 per 10 cm)
Total Thickness:	6.9 mm
Dye Method:	Solution Dyed
Backing Material:	EcoFlex Air
Fiber Type:	Colorstrand® SD Nylon
Pattern Repeat:	Not Applicable
Size:	12" x 36" (.3048 m x .9144 m)
Installation Method:	Monolithic, Half Lap, Brick Ashlar, Basket Weave, Plank Half Lap, Monolithic Stepping, Random, Herringbone
Stain Release Technology:	Sentry Plus Stain Protection
Soil Release Technology:	Sentry Soil Protection
Foot Traffic Recommendation TARR:	Severe

SUSTAINABILITY

Material Health:	Declare
NSF 140:	EcoFlex Air-NSF 140 Platinum
EPD:	EcoFlex Air EPD
Indoor Air Quality:	GLP 1170

PERFORMANCE

Static:	AATCC-134 Under 3.5 KV
Flammability:	ASTM E 648 Class 1(Glue Down)
Smoke Density:	ASTM E 662 Less than 450

SERVICE

Warranties:	Lifetime Limited Carpet Tile Warranty
-------------	---------------------------------------



569
Cadet



853
Fallow



924
Platinum



958
Ecru



959
Slate



989
Charcoal



Shared Path | 924 Platinum
Disruptive Path | 913 Orange Crush
Color Balance | 252 Sola



DESIGN

Tufted Pile Weight:	17 oz/yd2 (576 g/m2)
Product Type:	Tile
Construction:	Tufted
Minimum Sq. Yd.:	No Minimum
Surface Texture:	Textured Patterned Multi-Colored Loop
Gauge:	1/12 (47.00 rows per 10 cm)
Density:	7,846
Weight Density:	133,384
Stitches Per Inch:	12.0 (47.24 per 10 cm)
Total Thickness:	6.9 mm
Dye Method:	Solution Dyed
Backing Material:	EcoFlex Air
Fiber Type:	Colorstrand® SD Nylon
Pattern Repeat:	Not Applicable
Size:	12" x 36" (.3048 m x .9144 m)
Installation Method:	Monolithic, Half Lap, Brick Ashlar, Basket Weave, Plank Half Lap, Monolithic Stepping, Random, Herringbone
Stain Release Technology:	Sentry Plus Stain Protection
Soil Release Technology:	Sentry Soil Protection
Foot Traffic Recommendation TARR:	Severe

SUSTAINABILITY

Material Health:	Declare
NSF 140:	EcoFlex Air-NSF 140 Platinum
EPD:	EcoFlex Air EPD
Indoor Air Quality:	GLP 1170

PERFORMANCE

Static:	AATCC-134 Under 3.5 KV
Flammability:	ASTM E 648 Class 1(Glue Down)
Smoke Density:	ASTM E 662 Less than 450

SERVICE

Warranties:	Lifetime Limited Carpet Tile Warranty
-------------	---------------------------------------



559
Cadet Blaze



859
Fallow Reflection



929
Platinum Gleam



939
Ecru Glimmer



949
Slate Burst



979
Charcoal Spark



Metallic Path | 949 Slate Brust

Art Style Collection



DESIGN

Tufted Pile Weight:	17 oz/yd2 (576 g/m2)
Product Type:	Tile
Construction:	Tufted
Minimum Sq. Yd.:	No Minimum
Surface Texture:	Textured Patterned Multi-Colored Loop
Gauge:	1/12 (47.00 rows per 10 cm)
Density:	7,285
Weight Density:	123,857
Stitches Per Inch:	12.0 (47.24 per 10 cm)
Total Thickness:	6.9 mm
Dye Method:	Solution Dyed
Backing Material:	EcoFlex Air
Fiber Type:	Colorstrand® SD Nylon
Pattern Repeat:	Not Applicable
Size:	12" x 36" (.3048 m x .9144 m)
Installation Method:	Monolithic, Half Lap, Brick Ashlar, Basket Weave, Plank Half Lap, Monolithic Stepping, Random, Herringbone
Stain Release Technology:	Sentry Plus Stain Protection
Soil Release Technology:	Sentry Soil Protection
Foot Traffic Recommendation TARR:	Severe

SUSTAINABILITY

Material Health:	Declare
NSF 140:	EcoFlex Air-NSF 140 Platinum
EPD:	EcoFlex Air EPD
Indoor Air Quality:	GLP 1170

PERFORMANCE

Static:	AATCC-134 Under 3.5 KV
Flammability:	ASTM E 648 Class 1(Glue Down)
Smoke Density:	ASTM E 662 Less than 450

SERVICE

Warranties:	Lifetime Limited Carpet Tile Warranty
-------------	---------------------------------------



911
Mellow Yellow



913
Orange Crush



914
Purple Dawn



915
Blue Dusk



916
Lime Rush



919
Pink Berry



931
Neon Citron



933
Crimson Flash



944
Cotton Candy



946
Above Par



954
Purple Ash



955
Cosmic Sky



Shared Path | 924 Platinum
Disruptive Path | 915 Blue Dusk



DESIGN

Product Type:	Tile
Construction:	Tufted
Minimum Sq Yd:	No Minimum
Surface Texture:	Textured Patterned Loop
Gauge:	1/12 (47.00 rows per 10 cm)
Tufted Pile Weight:	20 oz/yd2 (678 g/m2)
Total Thickness:	7.3 mm
Stitches Per Inch:	10.8 (45.52 per 10 cm)
Dye Method:	Solution Dyed
Fiber Type:	Duracolor® Tricolor Premium Nylon
Fiber Technology:	Duracolor® by Mohawk Group's Stain Resistant System. Passes GSA requirements for permanent stain resistant carpet.
Stain Release Technology:	Permanent, Built into Fiber
Soil Release Technology:	EcoSentry Soil Protection
Density:	5,853
Weight Density:	117,073
Backing Material:	EcoFlex One
Installation Method:	Monolithic, Half Lap, Brick Ashlar, Basket Weave, Plank Half Lap, Monolithic Stepping, Random, Herringbone
Size:	12" x 36" (.3048 m x .9144 m)
Pattern Repeat:	Not Applicable

SUSTAINABILITY

Material Health:	Declare Red List Free
NSF 140:	EcoFlex One-NSF 140 Platinum
EPD:	EcoFlex One EPD
Indoor Air Quality:	GLP 1170

PERFORMANCE

Static:	AATCC-134 Under 3.5 KV
Flammability:	ASTM E 648 Class 1(Glue Down)
Smoke Density:	ASTM E 662 Less than 450

SERVICE

Warranties:	Lifetime Limited Carpet Tile Warranty
-------------	---------------------------------------



141
Sunlight



252
Solar



373
Atomic



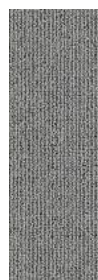
656
jungle



839
Bone



859
Roasted



937
Optic



949
Concrete



959
Bedrock



969
Titanium



979
Magnetic



989
Shadow



Crossing Current Collection



DESIGN

Tufted Pile Weight:	16 oz/yd2 (649 g/m2)
Product Type:	Tile
Construction:	Tufted
Minimum Sq. Yd.:	No Minimum
Surface Texture:	Textured Patterned Multi-Colored Loop
Gauge:	1/12 (47.00 rows per 10 cm)
Density:	6,063
Weight Density:	97,010
Stitches Per Inch:	11.4 (44.88 per 10 cm)
Total Thickness:	7 mm
Dye Method:	Solution Dyed
Backing Material:	EcoFlex Air
Fiber Type:	Colorstrand® SD Nylon
Pattern Repeat:	Not Applicable
Size:	24" x 24" (.6096 m x .6096 m)
Installation Method:	Monolithic, Half Lap, Brick Ashlar, Basket Weave, Plank Half Lap, Monolithic Stepping, Random, Herringbone
Stain Release Technology:	Sentry Plus Stain Protection
Soil Release Technology:	Sentry Soil Protection
Foot Traffic Recommendation TARR:	Severe

SUSTAINABILITY

Material Health:	Declare
NSF 140:	EcoFlex Air-NSF 140 Platinum
EPD:	EcoFlex Air EPD
Indoor Air Quality:	GLP 1170

PERFORMANCE

Static:	AATCC-134 Under 3.5 KV
Flammability:	ASTM E 648 Class 1(Glue Down)
Smoke Density:	ASTM E 662 Less than 450

SERVICE

Warranties:	Lifetime Limited Carpet Tile Warranty
-------------	---------------------------------------



975
Canning



976
Laurel



978
Alder



989
Dakota



Crossing Current Collection

DESIGN

Tufted Pile Weight:	16 oz/yd2 (649 g/m2)
Product Type:	Tile
Construction:	Tufted
Minimum Sq. Yd.:	No Minimum
Surface Texture:	Textured Patterned Multi-Colored Loop
Gauge:	1/12 (47.00 rows per 10 cm)
Density:	5,284
Weight Density:	84,550
Stitches Per Inch:	11.4 (44.88 per 10 cm)
Total Thickness:	7 mm
Dye Method:	Solution Dyed
Backing Material:	EcoFlex Air
Fiber Type:	Colorstrand® SD Nylon
Pattern Repeat:	Not Applicable
Size:	24" x 24" (.6096 m x .6096 m)
Installation Method:	Monolithic, Half Lap, Brick Ashlar, Basket Weave, Plank Half Lap, Monolithic Stepping, Random, Herringbone
Stain Release Technology:	Sentry Plus Stain Protection
Soil Release Technology:	Sentry Soil Protection
Foot Traffic Recommendation TARR:	Severe

SUSTAINABILITY

Material Health:	Declare
NSF 140:	EcoFlex Air-NSF 140 Platinum
EPD:	EcoFlex Air EPD
Indoor Air Quality:	GLP 1170

PERFORMANCE

Static:	AATCC-134 Under 3.5 KV
Flammability:	ASTM E 648 Class 1(Glue Down)
Smoke Density:	ASTM E 662 Less than 450

SERVICE

Warranties:	Lifetime Limited Carpet Tile Warranty
-------------	---------------------------------------



975
Canning



976
Laurel



978
Alder



989
Dakota



Nutopia 2.0 Collection



839
Compose



937
Serene



959
Idyllic



969
Fusion



979
Connect



989
Intrigue

DESIGN

Tufted Pile Weight:	20 oz/yd2 (678 g/m2)
Product Type:	Tile
Construction:	Tufted
Minimum Sq. Yd.:	No Minimum
Surface Texture:	Textured Patterned Loop
Gauge:	1/12(47.00 rows per 10 cm)
Density:	7,128
Weight Density:	142,574
Stitches Per Inch:	12.6 (49.61 per 10 cm)
Total Thickness:	7 mm
Dye Method:	Solution Dyed
Backing Material:	EcoFlex One
Fiber Type:	Duracolor® Tricor Premium Nylon
Fiber Technology:	Duracolor® by Mohawk Group's Stain Resistant System. Passes GSA requirements for permanent stain resistant carpet.
Pattern Repeat:	Not Applicable
Size:	12" x 36" (30.48 cm x 91.44cm)
Installation Method:	Monolithic, Half Lap, Brick Ashlar, Basket Weave, Plank Half Lap, Monolithic Stepping, Random, Herringbone
GSA Stain Release Rating:	Pass
Stain Release Technology:	Permanent, Built into Fiber
Soil Release Technology:	Sentry Soil Protection
Foot Traffic Recommendation TARR:	Heavy

SUSTAINABILITY

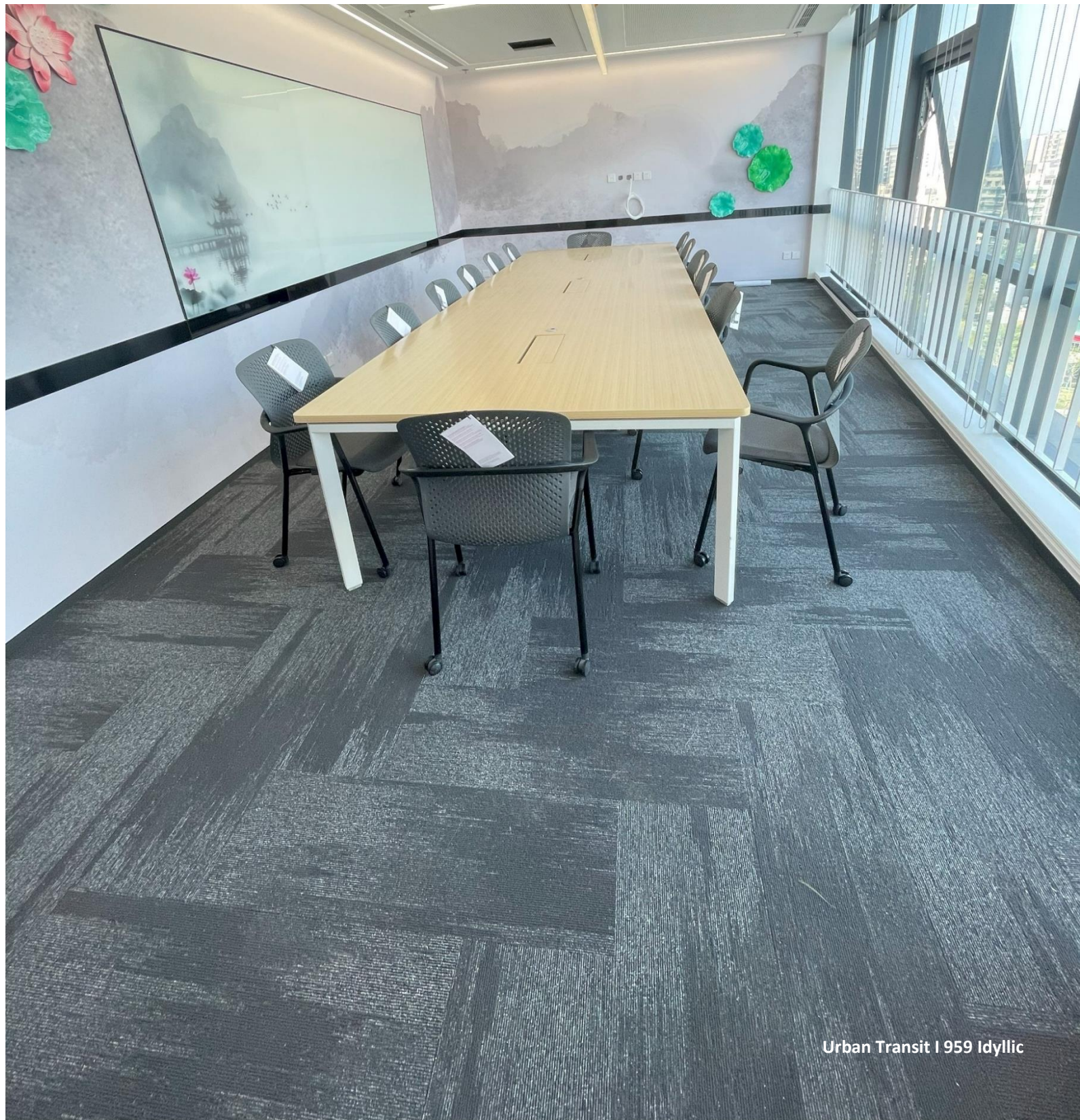
Material Health:	Declare Red List Free
NSF 140:	EcoFlex One-NSF 140 Platinum
EPD:	EcoFlex One EPD
Indoor Air Quality:	GLP 1170

PERFORMANCE

Static:	AATCC-134 Under 3.5 KV
Flammability:	ASTM E 648 Class 1(Glue Down)
Smoke Density:	ASTM E 662 Less than 450

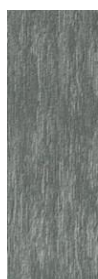
SERVICE

Warranties:	Lifetime Limited Carpet Tile Warranty
-------------	---------------------------------------



Nutopia 2.0 Collection


839
Compose



937
Serene



959
Idyllic



979
Connect



989
Intrigue



969
Fusion

DESIGN

Tufted Pile Weight:	20 oz/yd2 (678 g/m2)
Product Type:	Tile
Construction:	Tufted
Minimum Sq. Yd.:	No Minimum
Surface Texture:	Textured Patterned Loop
Gauge:	1/12(47.00 rows per 10 cm)
Density:	7,058
Weight Density:	141,176
Stitches Per Inch:	12.2 (48.03 per 10 cm)
Total Thickness:	7 mm
Dye Method:	Solution Dyed
Backing Material:	EcoFlex One
Fiber Type:	Duracolor® Tricor Premium Nylon
Fiber Technology:	Duracolor® by Mohawk Group's Stain Resistant System. Passes GSA requirements for permanent stain resistant carpet.
Pattern Repeat:	Not Applicable
Size:	12" x 36" (30.48 cm x 91.44cm)
Installation Method:	Brick Ashlar, Basket Weave, Plank Half Lap, Random, Herringbone
GSA Stain Release Rating:	Pass
Stain Release Technology:	Permanent, Built into Fiber
Soil Release Technology:	Sentry Soil Protection
Foot Traffic Recommendation TARR:	Heavy

SUSTAINABILITY

Material Health:	Declare Red List Free
NSF 140:	EcoFlex One-NSF 140 Platinum
EPD:	EcoFlex One EPD
Indoor Air Quality:	GLP 1170

PERFORMANCE

Static:	AATCC-134 Under 3.5 KV
Flammability:	ASTM E 648 Class 1(Glue Down)
Smoke Density:	ASTM E 662 Less than 450

SERVICE

Warranties:	Lifetime Limited Carpet Tile Warranty
-------------	--



Optic Reset Collection



DESIGN

Product Type:	Tile
Construction:	Tufted
Minimum SqYd:	No Minimum
Surface Texture:	Textured Patterned Multi-Colored Loop
Gauge:	1/12 (47.00 rows per 10 cm)
Tufted Pile Weight:	18 oz/yd ² (610 g/m ²)
Finished Pile Thickness:	3.12 mm
Total Thickness:	6.92 mm
Stitches Per Inch:	12.3 (48.43 per 10 cm)
Dye Method:	Solution Dyed
Fiber Type:	Duracolor® Tricor Premium Nylon
Stain Release Technology:	Permanent, Built into Fiber
Soil Release Technology:	EcoSentry Soil Treatment
Density:	5,062
Weight Density:	9,125
Backing Material:	EcoFlex One
Installation Method:	Half Lap, Brick Ashlar, Random, Herringbone
Size:	12" x 36" (30.48 cm x 91.44 cm)
Pattern Repeat:	Not Applicable

SUSTAINABILITY

Material Health:	Declare Red List Free
NSF 140:	EcoFlex One-NSF 140 Platinum
EPD:	EcoFlex One EPD
Indoor Air Quality:	GLP 1170

PERFORMANCE

Static:	AATCC-134 Under 3.5 KV
Flammability:	ASTM E 648 Class 1 (Glue Down)
Smoke Density:	ASTM E 662 Less than 450

SERVICE

Warranties:	Lifetime Limited Carpet Tile Warranty
-------------	---------------------------------------



282
Fresco Light



585
Indigo Light



696
Verdigris Light



868
Nuance Light



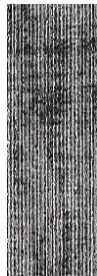
957
Ferro Light



959
Moonlit Light



979
Silhouette Light



987
Cinematic Light



988
Undertone Light



Field of View Light | 868 Nuance Light

Optic Reset Collection



DESIGN

Product Type:	Tile
Construction:	Tufted
Minimum SqYd:	No Minimum
Surface Texture:	Textured Patterned Multi-Colored Loop
Gauge:	1/12 (47.00 rows per 10 cm)
Tufted Pile Weight:	18 oz/yd ² (610 g/m ²)
Finished Pile Thickness:	3.12 mm
Total Thickness:	6.92 mm
Stitches Per Inch:	121 (47.64 per 10 cm)
Dye Method:	Solution Dyed
Fiber Type:	Duracolor® Tricor Premium Nylon
Stain Release Technology:	Permanent, Built into Fiber
Soil Release Technology:	EcoSentry Soil Treatment
Density:	5,400
Weight Density:	97,200
Backing Material:	EcoFlex One
Installation Method:	Half Lap, Brick Ashlar, Random, Herringbone
Size:	12" x 36" (30.48 cm x 91.44 cm)
Pattern Repeat:	Not Applicable

SUSTAINABILITY

Material Health:	Declare Red List Free
NSF 140:	EcoFlex One-NSF 140 Platinum
EPD:	EcoFlex One EPD
Indoor Air Quality:	GLP 1170

PERFORMANCE

Static:	AATCC-134 Under 3.5 KV
Flammability:	ASTM E 648 Class 1 (Glue Down)
Smoke Density:	ASTM E 662 Less than 450

SERVICE

Warranties:	Lifetime Limited Carpet Tile Warranty
-------------	---------------------------------------



282
Fresco Dark



585
Indigo Dark



696
Verdigris Dark



868
Nuance Dark



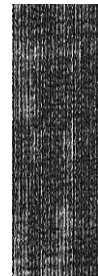
957
Ferro Dark



959
Moonlit Dark



979
Silhouette Dark



987
Cinematic Dark



988
Undertone Dark



Renegade Collection

DESIGN

Tufted Pile Weight:	15.0 oz. per sq. yd. (509 g/m ²)
Product Type:	Tile
Construction:	Tufted
Minimum Sq. Yd.:	No Minimum
Surface Texture:	Textured Patterned Loop
Gauge:	1/12(47.00 rows per 10 cm)
Density:	5,346
Weight Density:	80,198
Stitches Per Inch:	9.8 (38.58 per 10 cm)
Total Thickness:	6.5mm
Dye Method:	Solution Dyed
Backing Material:	EcoFlex Air
Fiber Type:	Colorstrand® SD Nylon
Pattern Repeat:	Not Applicable
Size:	24" x 24" (.6096 m x .6096 m)
Installation Method:	Vertical Ashlar, Quarter Turn, Multi Directional, Monolithic, Brick Ashlar
GSA Stain Release Rating:	Pass
Stain Release Technology:	Sentry Plus Stain Protection
Soil Release Technology:	Sentry Soil Protection
Foot Traffic Recommendation TARR:	Severe



955
Cool Hand



983
Roust About



999
Leather Jacket

SUSTAINABILITY

Material Health:	Declare
NSF 140:	EcoFlex Air-NSF 140 Platinum
EPD:	EcoFlex Air EPD
Indoor Air Quality:	GLP 1170

PERFORMANCE

Static:	AATCC-134 Under 3.5 KV
Flammability:	ASTM E 648 Class 1(Glue Down)
Smoke Density:	ASTM E 662 Less than 450

SERVICE

Warranties:	Lifetime Limited Carpet Tile Warranty
-------------	---------------------------------------



Headstrong | 983 Roust About
Headstrong | 999 Leather Jacket

Renegade Collection


DESIGN

Tufted Pile Weight:	15.0 oz. per sq. yd. (509 g/m2)
Product Type:	Tile
Construction:	Tufted
Minimum Sq. Yd.:	No Minimum
Surface Texture:	Textured Patterned Loop
Gauge:	1/12(47.00 rows per 10 cm)
Density:	5,094
Weight Density:	76,415
Stitches Per Inch:	9.8 (38.58 per 10 cm)
Total Thickness:	6.5 mm
Dye Method:	Solution Dyed
Backing Material:	EcoFlex Air
Fiber Type:	Colorstrand® SD Nylon
Pattern Repeat:	Not Applicable
Size:	24" x 24" (.6096 m x .6096 m)
Installation Method:	Vertical Ashlar, Quarter Turn, Multi Directional, Monolithic, Brick Ashlar
GSA Stain Release Rating:	Pass
Stain Release Technology:	Sentry Plus Stain Protection
Soil Release Technology:	Sentry Soil Protection
Foot Traffic Recommendation TARR:	Severe

SUSTAINABILITY

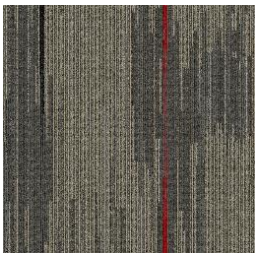
Material Health:	Declare
NSF 140:	EcoFlex Air-NSF 140 Platinum
EPD:	EcoFlex Air EPD
Indoor Air Quality:	GLP 1170

PERFORMANCE

Static:	AATCC-134 Under 3.5 KV
Flammability:	ASTM E 648 Class 1(Glue Down)
Smoke Density:	ASTM E 662 Less than 450

SERVICE

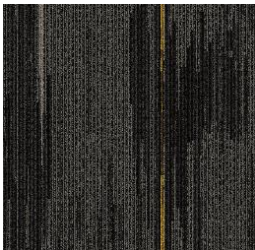
Warranties:	Lifetime Limited Carpet Tile Warranty
-------------	---------------------------------------



955
Cool Hand



983
Roust About



999
Leather Jacket



Riot I 999 Leather Jacket

Renegade Collection



DESIGN

Tufted Pile Weight:	15.0 oz. per sq. yd. (509 g/m2)
Product Type:	Tile
Construction:	Tufted
Minimum Sq. Yd.:	No Minimum
Surface Texture:	Textured Patterned Loop
Gauge:	1/12(47.00 rows per 10 cm)
Density:	5,000
Weight Density:	75,000
Stitches Per Inch:	10.2 (40.16 per 10 cm)
Total Thickness:	6.5 mm
Dye Method:	Solution Dyed
Backing Material:	EcoFlex Air
Fiber Type:	Colorstrand® SD Nylon
Pattern Repeat:	Not Applicable
Size:	24" x 24" (.6096 m x .6096 m)
Installation Method:	Monolithic, Vertical Ashlar, Brick Ashlar, Quarter Turn, Multi Directional
Stain Release Technology:	Sentry Plus Stain Protection
Soil Release Technology:	Sentry Soil Protection
Foot Traffic Recommendation TARR:	Heavy

SUSTAINABILITY

Material Health:	Declare
NSF 140:	EcoFlex Air-NSF 140 Platinum
EPD:	EcoFlex Air EPD
Indoor Air Quality:	GLP 1170

PERFORMANCE

Static:	AATCC-134 Under 3.5 KV
Flammability:	ASTM E 648 Class 1(Glue Down)
Smoke Density:	ASTM E 662 Less than 450

SERVICE

Warranties:	Lifetime Limited Carpet Tile Warranty
-------------	---------------------------------------



955
Cool Hand



983
Roust About



999
Leather Jacket







DESIGN

Product Type:	Tile
Construction:	Tufted
Minimum Sq. Yd.:	No Minimum
Surface Texture:	Textured Patterned Multi-Colored Loop
Gauge:	1/12 (47.00 rows per 10 cm)
Density:	8,100
Weight Density:	105,077
Stitches Per Inch:	11.4 (44.88 per 10 cm)
Total Thickness:	6.8 mm
Dye Method:	Solution Dyed
Backing Material:	EcoFlex Air
Fiber Type:	Colorstrand® SD Nylon
Pattern Repeat:	Not Applicable
Size:	24" x 24" (.6096 m x .6096 m)
Installation Method:	Brick Ashlar, Multi-Directional, Quarter Turn Side Match, Vertical Ashlar
Stain Release Technology:	Sentry Plus Stain Protection
Soil Release Technology:	Sentry Soil Protection
Foot Traffic Recommendation TARR:	Heavy

SUSTAINABILITY

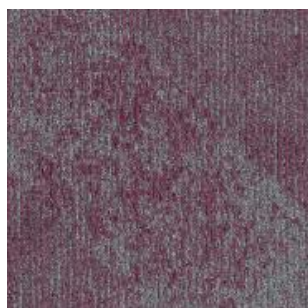
Material Health:	Declare
NSF 140:	EcoFlex Air-NSF 140 Platinum
EPD:	EcoFlex Air EPD
Indoor Air Quality:	GLP 1170

PERFORMANCE

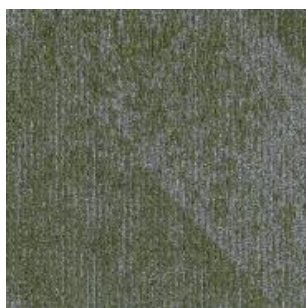
Static:	AATCC-134 Under 3.5 KV
Flammability:	ASTM E 648 Class 1(Glue Down)
Smoke Density:	ASTM E 662 Less than 450

SERVICE

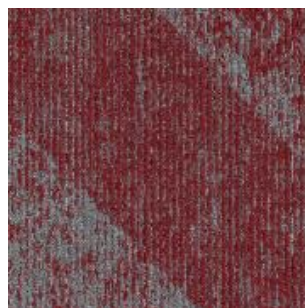
Warranties:	Lifetime Limited Carpet Tile Warranty
-------------	---------------------------------------



933
Pi Pink



936
Parabola Peridot



943
Fractal Fire



944
Polygon



945
Infinity Indigo



946
Integral Ivy



955
Aqua Apex



956
Tangent Teal



971
Golden Ratio



972
Calculations



973
Sunset Sequences



975
Ice Inverse



977
Iron Index



987
Discrete Diamond



988
Tessellation Taupe



989
Ink Integer





DESIGN

Product Type:	Tile
Construction:	Tufted
Minimum Sq. Yd.:	No Minimum
Surface Texture:	Textured Patterned Multi-Colored Loop
Gauge:	1/12 (47.00 rows per 10 cm)
Density:	8,100
Weight Density:	105,077
Stitches Per Inch:	11.5 (45.28 per 10 cm)
Total Thickness:	6.8 mm
Dye Method:	Solution Dyed
Backing Material:	EcoFlex Air
Fiber Type:	Colorstrand® SD Nylon
Pattern Repeat:	Not Applicable
Size:	24" x 24" (.6096 m x .6096 m)
Installation Method:	Quarter TurnSide, Match Vertical Ashlar Brick, Ashlar Multi-Directional
Stain Release Technology:	Sentry Plus Stain Protection
Soil Release Technology:	Sentry Soil Protection
Foot Traffic Recommendation TARR:	Heavy

SUSTAINABILITY

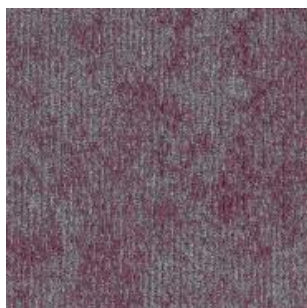
Material Health:	Declare
NSF 140:	EcoFlex Air-NSF 140 Platinum
EPD:	EcoFlex Air EPD
Indoor Air Quality:	GLP 1170

PERFORMANCE

Static:	AATCC-134 Under 3.5 KV
Flammability:	ASTM E 648 Class 1(Glue Down)
Smoke Density:	ASTM E 662 Less than 450

SERVICE

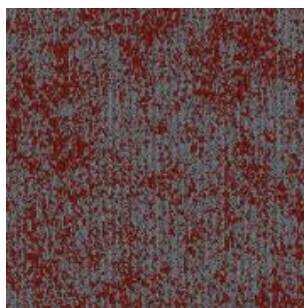
Warranties:	Lifetime Limited Carpet Tile Warranty
-------------	---------------------------------------



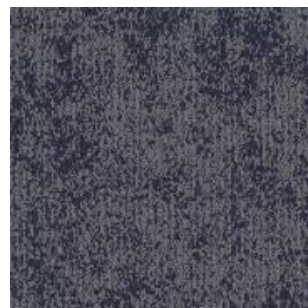
933
Pi Pink



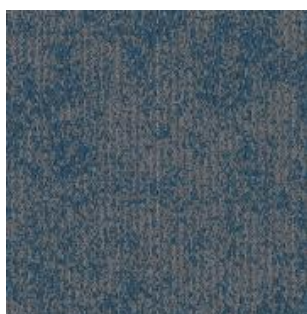
936
Parabola Peridot



943
Fractal Fire



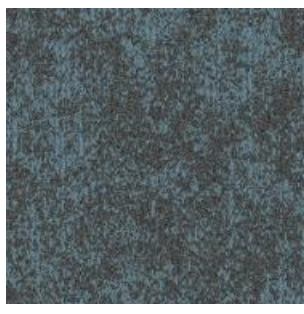
944
Polygon



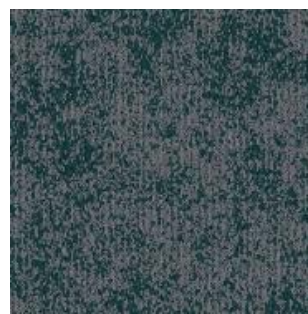
945
Infinity Indigo



946
Integral Ivy



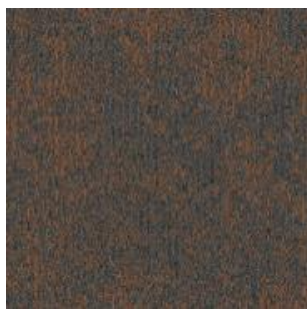
955
Aqua Apex



956
Tangent Teal



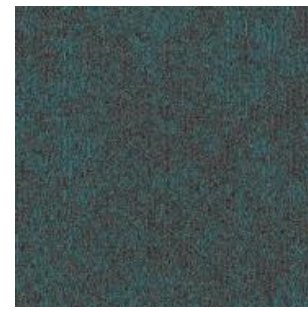
971
Golden Ratio



972
Calculations



973
Sunset Sequences



975
Ice Inverse



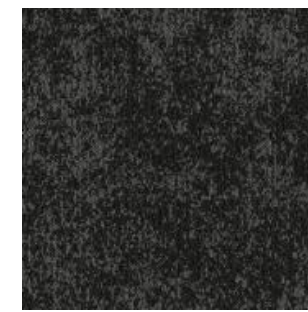
977
Iron Index



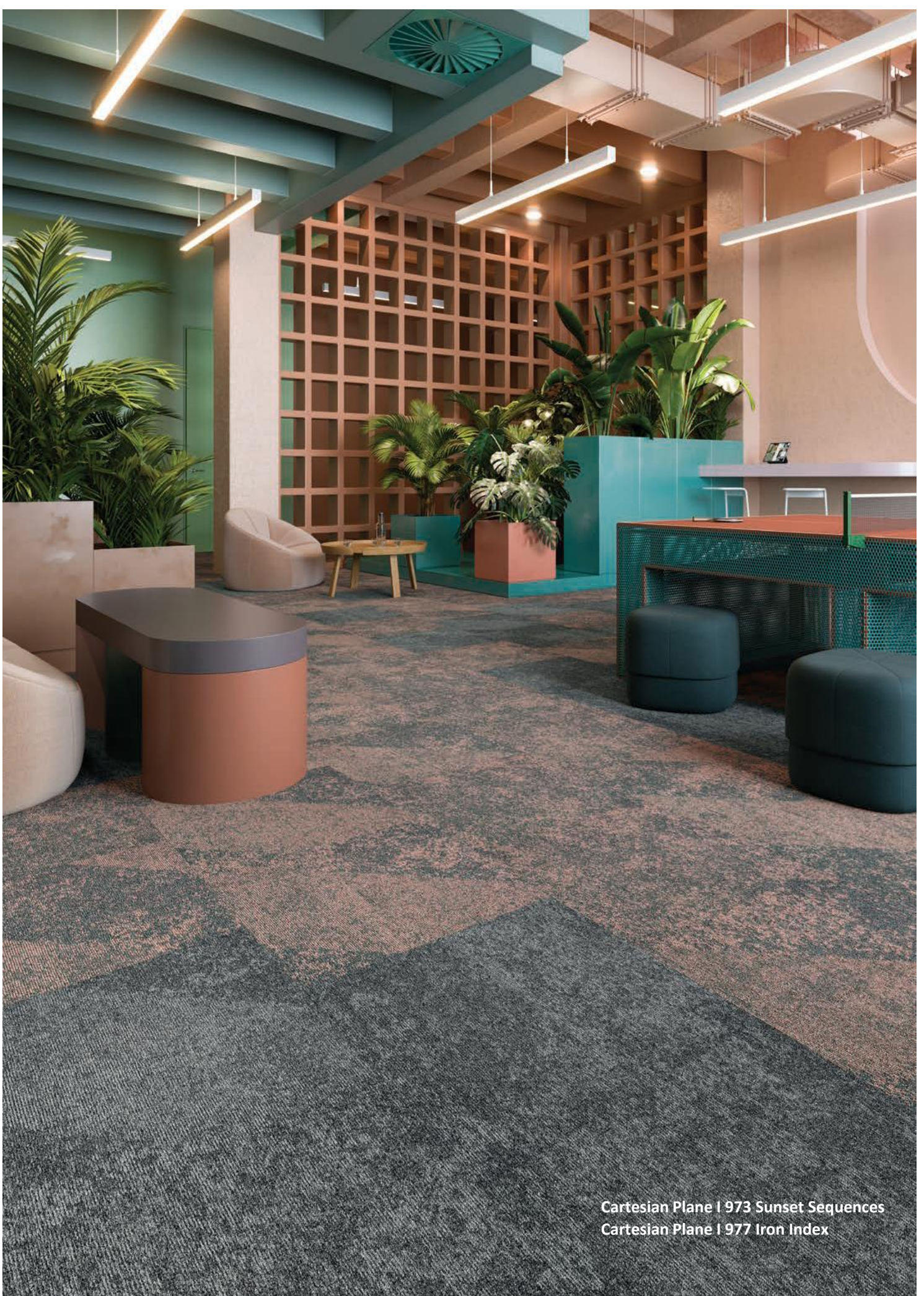
987
Discrete Diamond



988
Tessellation Taupe



989
Ink Integer



Cartesian Plane | 973 Sunset Sequences
Cartesian Plane | 977 Iron Index



DESIGN

Tufted Pile Weight:	15 oz/yd ² (509 g/m ²)
Product Type:	Tile
Construction:	Tufted
Minimum Sq. Yd.:	No Minimum
Surface Texture:	Textured Patterned Loop
Gauge:	1/12 (47.00 rows per 10 cm)
Density:	6,585
Weight Density:	98,780
Stitches Per Inch:	11.0 (43.31 per 10 cm)
Total Thickness:	6.5 mm
Dye Method:	Solution Dyed
Backing Material:	EcoFlex Air
Fiber Type:	Colorstrand® SD Nylon
Pattern Repeat:	Not Applicable
Size:	24" x 24" (.6096 m x .6096 m)
Installation Method:	Quarter Turn, Monolithic, Vertical Ashlar, Brick Ashlar, Multi Directional
Stain Release Technology:	Sentry Plus Stain Protection
Soil Release Technology:	Sentry Soil Protection
Foot Traffic Recommendation TARR:	Heavy

SUSTAINABILITY

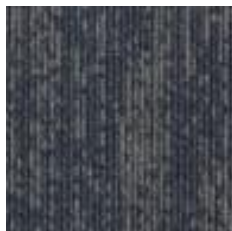
Material Health:	Declare
NSF 140:	EcoFlex Air-NSF 140 Platinum
EPD:	EcoFlex Air EPD
Indoor Air Quality:	GLP 1170

PERFORMANCE

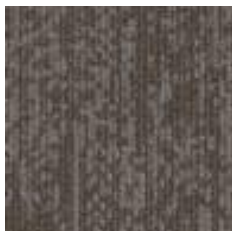
Static:	AATCC-134 Under 3.5 KV
Flammability:	ASTM E 648 Class 1(Glue Down)
Smoke Density:	ASTM E 662 Less than 450

SERVICE

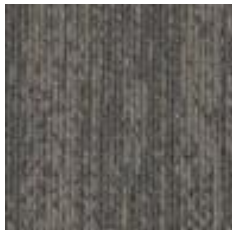
Warranties:	Lifetime Limited Carpet Tile Warranty
-------------	---------------------------------------



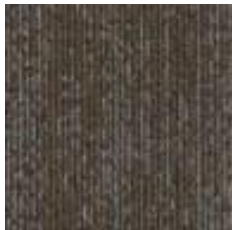
593
Navy Gray



929
Light Elm



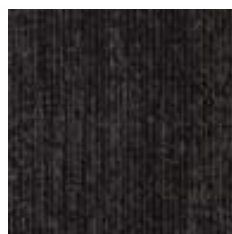
937
Steel



948
Brown Oak



979
Pencil Lead



989
Charcoal



Sketch Effect Collection



DESIGN

Tufted Pile Weight:	15 oz/yd2 (509 g/m2)
Product Type:	Tile
Construction:	Tufted
Minimum Sq. Yd.:	No Minimum
Surface Texture:	Textured Patterned Loop
Gauge:	1/12 (47.00 rows per 10 cm)
Density:	6,000
Weight Density:	90,000
Stitches Per Inch:	11.0 (43.31 per 10 cm)
Total Thickness:	6.5 mm
Dye Method:	Solution Dyed
Backing Material:	EcoFlex Air
Fiber Type:	Colorstrand® SD Nylon
Pattern Repeat:	Not Applicable
Size:	24" x 24" (.6096 m x .6096 m)
Installation Method:	Vertical Ashlar, Quarter Turn
Stain Release Technology:	Sentry Plus Stain Protection
Soil Release Technology:	Sentry Soil Protection
Foot Traffic Recommendation TARR:	Heavy

SUSTAINABILITY

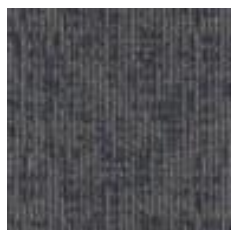
Material Health:	Declare
NSF 140:	EcoFlex Air-NSF 140 Platinum
EPD:	EcoFlex Air EPD
Indoor Air Quality:	GLP 1170

PERFORMANCE

Static:	AATCC-134 Under 3.5 KV
Flammability:	ASTM E 648 Class 1(Glue Down)
Smoke Density:	ASTM E 662 Less than 450

SERVICE

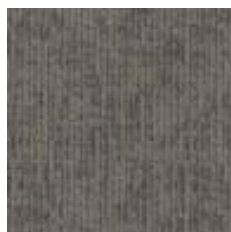
Warranties:	Lifetime Limited Carpet Tile Warranty
-------------	---------------------------------------



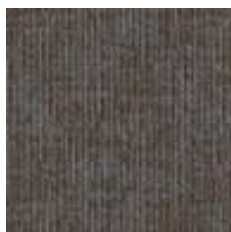
593 Navy Gray



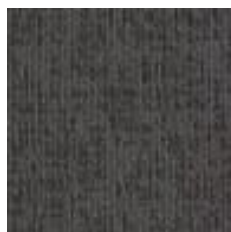
929 Light Elm



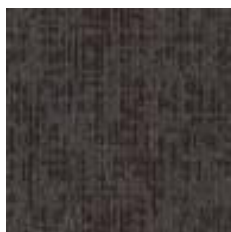
937 Steel



948 Brown Oak



979 Pencil Lead



989 Charcoal





DESIGN

Product Type:	Tile
Construction:	Tufted
Minimum Sq. Yd.:	No Minimum
Surface Texture:	Textured Patterned Multi-Colored Loop
Gauge:	1/12 (47.00 rows per 10 cm)
Density:	8,100
Weight Density:	105,077
Stitches Per Inch:	10.4 (40.94 per 10 cm)
Total Thickness:	6.9 mm
Dye Method:	Solution Dyed
Backing Material:	EcoFlex Air
Fiber Type:	Colorstrand® SD Nylon
Pattern Repeat:	Not Applicable
Size:	24" x 24" (.6096 m x .6096 m)
Installation Method:	Brick Ashlar, Side Match
Stain Release Technology:	Sentry Plus Stain Protection
Soil Release Technology:	Sentry Soil Protection
Foot Traffic Recommendation TARR:	Heavy



593
Wellspring



626
Meadow



868
Yarrow



924
Moraine



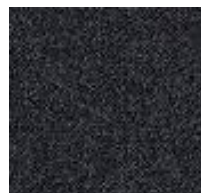
957
Freshwater



958
Seedbed



959
Peppercorn



989
Rooted

SUSTAINABILITY

Material Health:	Declare
NSF 140:	EcoFlex Air-NSF 140 Platinum
EPD:	EcoFlex Air EPD
Indoor Air Quality:	GLP 1170

PERFORMANCE

Static:	AATCC-134 Under 3.5 KV
Flammability:	ASTM E 648 Class 1(Glue Down)
Smoke Density:	ASTM E 662 Less than 450

SERVICE

Warranties:	Lifetime Limited Carpet Tile Warranty
-------------	---------------------------------------



Base Layer | 593 Wellspring

Substratum Collection



DESIGN

Product Type:	Tile
Construction:	Tufted
Minimum Sq. Yd.:	No Minimum
Surface Texture:	Textured Patterned Multi-Colored Loop
Gauge:	1/12 (47.00 rows per 10 cm)
Density:	8,100
Weight Density:	105,077
Stitches Per Inch:	10.4 (40.94 per 10 cm)
Total Thickness:	6.9 mm
Dye Method:	Solution Dyed
Backing Material:	EcoFlex Air
Fiber Type:	Colorstrand® SD Nylon
Pattern Repeat:	Not Applicable
Size:	24" x 24" (.6096 m x .6096 m)
Installation Method:	Brick Ashlar, Side Match
Stain Release Technology:	Sentry Plus Stain Protection
Soil Release Technology:	Sentry Soil Protection
Foot Traffic Recommendation TARR:	Heavy



593
Wellspring



626
Meadow



868
Yarrow



924
Moraine



957
Freshwater



958
Seedbed



959
Peppercorn



989
Rooted

SUSTAINABILITY

Material Health:	Declare
NSF 140:	EcoFlex Air-NSF 140 Platinum
EPD:	EcoFlex Air EPD
Indoor Air Quality:	GLP 1170

PERFORMANCE

Static:	AATCC-134 Under 3.5 KV
Flammability:	ASTM E 648 Class 1(Glue Down)
Smoke Density:	ASTM E 662 Less than 450

SERVICE

Warranties:	Lifetime Limited Carpet Tile Warranty
-------------	---------------------------------------



Substratum | 626 Meadow

Timeless Tailored Collection



DESIGN

Product Type:	Tile
Construction:	Tufted
Minimum SqYd:	No Minimum
Surface Texture:	Textured Patterned Multi-Colored Loop
Gauge:	1/12 (47.24 rows per 10 cm)
Tufted Pile Weight:	19 oz/yd ² (644 g/m ²)
Finished Pile Thickness:	3.12 mm
Total Thickness:	7.1 mm
Stitches Per Inch:	13.9 (54.72 per 10 cm)
Dye Method:	Solution Dyed
Fiber Type:	Duracolor® Tricor Premium Nylon
Stain Release Technology:	Permanent, Built into Fiber
Soil Release Technology:	EcoSentry Soil Treatment
Density:	6,000
Weight Density:	97,200
Backing Material:	EcoFlex One
Installation Method:	Half Lap, Brick Ashlar, Random, Herringbone
Size:	12" x 36" (30.48 cm x 91.44 cm)
Pattern Repeat:	Not Applicable

SUSTAINABILITY

Material Health:	Declare Red List Free
NSF 140:	EcoFlex One-NSF 140 Platinum
EPD:	EcoFlex One EPD
Indoor Air Quality:	GLP 1170

PERFORMANCE

Static:	AATCC-134 Under 3.5 KV
Flammability:	ASTM E 648 Class 1 (Glue Down)
Smoke Density:	ASTM E 662 Less than 450

SERVICE

Warranties:	Lifetime Limited Carpet Tile Warranty
-------------	---------------------------------------



535
Cornflower



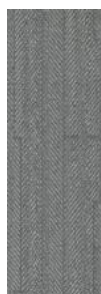
545
Royal



839
Flax



859
Taupe



929
Silver



949
Mineral



969
Iron



989
Charcoal



Timeless Tailored Collection

DESIGN

Product Type:	Tile
Construction:	Tufted
Minimum SqYd:	No Minimum
Surface Texture:	Textured Patterned Multi-Colored Loop
Gauge:	1/12 (47.24 rows per 10 cm)
Tufted Pile Weight:	19 oz/yd2 (644 g/m2)
Finished Pile Thickness:	3.12 mm
Total Thickness:	7.1 mm
Stitches Per Inch:	13.9 (54.72 per 10 cm)
Dye Method:	Solution Dyed
Fiber Type:	Duracolor® Tricor Premium Nylon
Stain Release Technology:	Permanent, Built into Fiber
Soil Release Technology:	EcoSentry Soil Treatment
Density:	6,000
Weight Density:	97,200
Backing Material:	EcoFlex One
Installation Method:	Half Lap, Brick Ashlar, Random, Herringbone
Size:	12" x 36" (30.48 cm x 91.44 cm)
Pattern Repeat:	Not Applicable

SUSTAINABILITY

Material Health:	Declare Red List Free
NSF 140:	EcoFlex One-NSF 140 Platinum
EPD:	EcoFlex One EPD
Indoor Air Quality:	GLP 1170

PERFORMANCE

Static:	AATCC-134 Under 3.5 KV
Flammability:	ASTM E 648 Class 1 (Glue Down)
Smoke Density:	ASTM E 662 Less than 450

SERVICE

Warranties:	Lifetime Limited Carpet Tile Warranty
-------------	--



535
Cornflower



545
Royal



839
Flax



859
Taupe



929
Silver



949
Mineral



969
Iron



989
Charcoal



Timeless Tailored Collection



DESIGN

Product Type:	Tile
Construction:	Tufted
Minimum SqYd:	No Minimum
Surface Texture:	Textured Patterned Multi-Colored Loop
Gauge:	1/12 (47.24 rows per 10 cm)
Tufted Pile Weight:	18 oz/yd ² (610 g/m ²)
Finished Pile Thickness:	3.12 mm
Total Thickness:	7.1 mm
Stitches Per Inch:	13.5 (51.35 per 10 cm)
Dye Method:	Solution Dyed
Fiber Type:	Duracolor® Tricor Premium Nylon
Stain Release Technology:	Permanent, Built into Fiber
Soil Release Technology:	EcoSentry Soil Treatment
Density:	6,893
Weight Density:	97,200
Backing Material:	EcoFlex One
Installation Method:	Half Lap, Brick Ashlar, Random, Herringbone
Size:	12" x 36" (30.48 cm x 91.44 cm)
Pattern Repeat:	Not Applicable

SUSTAINABILITY

Material Health:	Declare Red List Free
NSF 140:	EcoFlex One-NSF 140 Platinum
EPD:	EcoFlex One EPD
Indoor Air Quality:	GLP 1170

PERFORMANCE

Static:	AATCC-134 Under 3.5 KV
Flammability:	ASTM E 648 Class 1 (Glue Down)
Smoke Density:	ASTM E 662 Less than 450

SERVICE

Warranties:	Lifetime Limited Carpet Tile Warranty
-------------	---------------------------------------


535
Cornflower

545
Royal

839
Flax

859
Taupe

929
Silver

949
Mineral

969
Iron

989
Charcoal



Visual Edge Collection

DESIGN

Tufted Pile Weight:	15 oz/yd2 (509 g/m2)
Product Type:	Tile
Construction:	Tufted
Minimum Sq. Yd.:	No Minimum
Surface Texture:	Textured Patterned Loop
Gauge:	1/12 (47.00 rows per 10 cm)
Density:	5,192
Weight Density:	77,884
Stitches Per Inch:	11.0 (43.31 per 10 cm)
Finished Pile Thickness:	6.5 mm
Dye Method:	Solution Dyed
Backing Material:	EcoFlex Air
Fiber Type:	Colorstrand® SD Nylon
Pattern Repeat:	Not Applicable
Size:	12" x 36" (.3048 m x .9144 m)
Installation Method:	Half Lap, Plank Half Lap, Herringbone
Stain Release Technology:	EcoSentry Plus Stain Protection
Soil Release Technology:	EcoSentry Soil Protection
Foot Traffic Recommendation TARR:	Heavy



593
Indigo Ink



929
Warm Neutral



937
Wet Cement



948
Rustic Taupe



979
Metal Grey



989
Dark Charcoal

SUSTAINABILITY

Material Health:	Declare
NSF 140:	EcoFlex Air-NSF 140 Platinum
EPD:	EcoFlex Air EPD
Indoor Air Quality:	GLP 1170

PERFORMANCE

Static:	AATCC-134 Under 3.5 KV
Flammability:	ASTM E 648 Class 1(Glue Down)
Smoke Density:	ASTM E 662 Less than 450

SERVICE

Warranties:	Lifetime Limited Carpet Tile Warranty
-------------	---------------------------------------



Angled Perception | 937 Wet Cement
Hidden Dimension | 937 Wet Cement

Visual Edge Collection

DESIGN

Tufted Pile Weight:	15 oz/yd ² (509 g/m ²)
Product Type:	Tile
Construction:	Tufted
Minimum Sq. Yd.:	No Minimum
Surface Texture:	Textured Patterned Loop
Gauge:	1/12 (47.00 rows per 10 cm)
Density:	5,869
Weight Density:	88,043
Stitches Per Inch:	11.2 (44.09 per 10 cm)
Total Thickness:	6.5 mm
Dye Method:	Solution Dyed
Backing Material:	EcoFlex Air
Fiber Type:	Colorstrand® SD Nylon
Pattern Repeat:	Not Applicable
Size:	12" x 36" (.3048 m x .9144 m)
Installation Method:	Monolithic, Half Lap, Brick Ashlar, Basket Weave, Plank Half Lap, Random, Herringbone
Stain Release Technology:	EcoSentry Plus Stain Protection
Soil Release Technology:	EcoSentry Soil Protection
Foot Traffic Recommendation TARR:	Heavy



593
Indigo Ink



929
Warm Neutral



937
Wet Cement



948
Rustic Taupe



979
Metal Grey



989
Dark Charcoal

SUSTAINABILITY

Material Health:	Declare
NSF 140:	EcoFlex Air-NSF 140 Platinum
EPD:	EcoFlex Air EPD
Indoor Air Quality:	GLP 1170

PERFORMANCE

Static:	AATCC-134 Under 3.5 KV
Flammability:	ASTM E 648 Class 1(Glue Down)
Smoke Density:	ASTM E 662 Less than 450

SERVICE

Warranties:	Lifetime Limited Carpet Tile Warranty
-------------	---------------------------------------

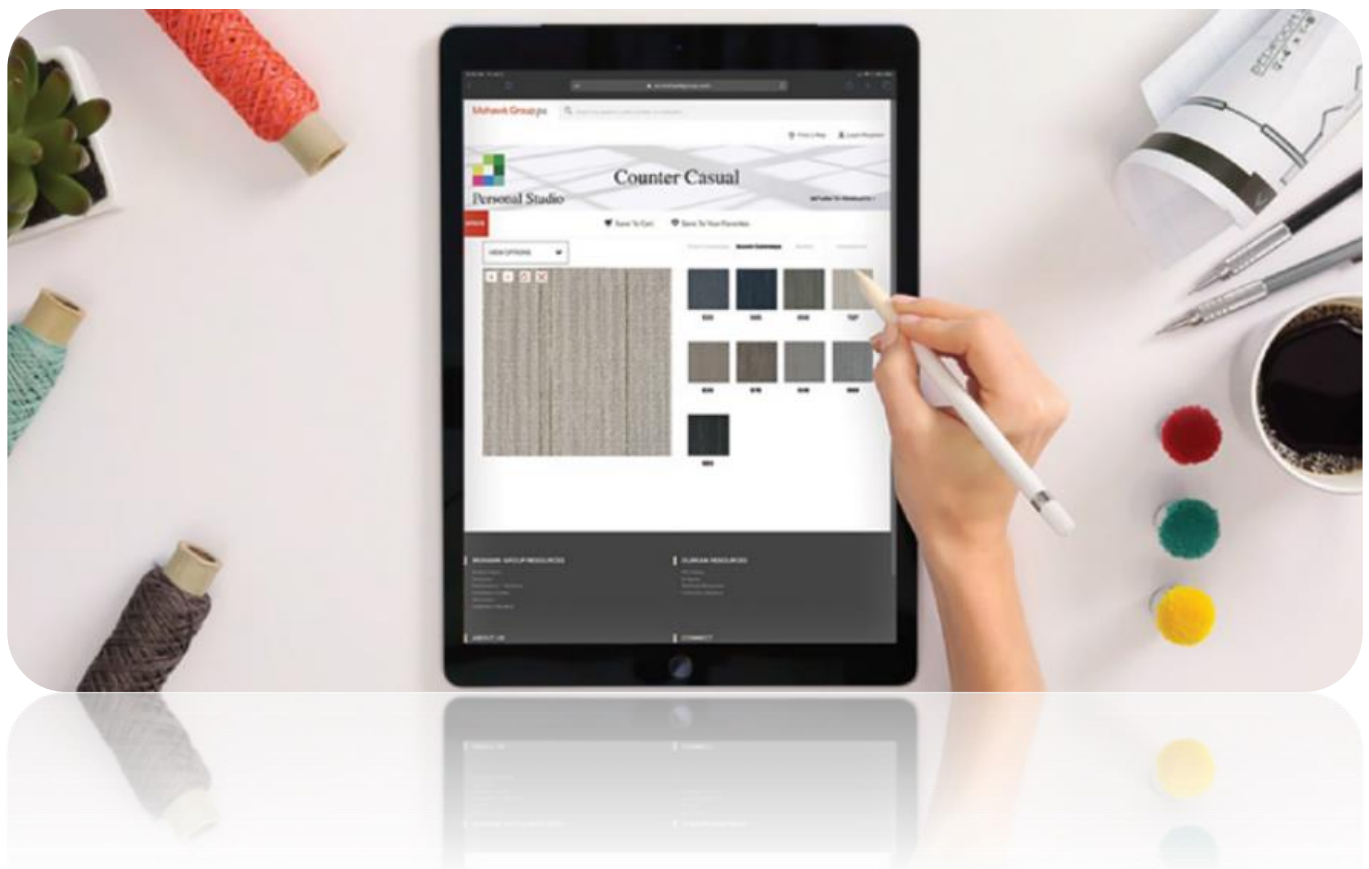


Make to Order



- Make to Order
MOQ = 200m2 Per Item

Collection	Style	Size mm	Backing System
Reconnect 2.0	MG22009	609*609	EcoFlex Air
Archaic Forms	MG22010	305*914	EcoFlex Air
Baccharis	MG22011	305*914	EcoFlex Air
Carmenere	MG22012	609*609	EcoFlex Air
Motivated Movement	MG22013	609*609	EcoFlex Air
Rediscovered	MG22014	305*914	EcoFlex Air
Solve II	MG22015	609*609	EcoFlex Air
Xeric	MG22016	305*914	EcoFlex Air





DESIGN

Tufted Pile Weight:	15oz/yd ² (508 g/m ²)
Product Type:	Tile
Construction:	Tufted
Surface Texture:	Textured Patterned Multi-Colored Loop
Gauge:	1/12 (47.00 rows per 10 cm)
Density:	6,752
Weight Density:	106,146
Stitches Per Inch:	12.0 (47.24 per 10 cm)
Finished Pile Thickness:	2.91 mm
Total Thickness:	6.91 mm
Dye Method:	Solution Dyed
Backing Material:	EcoFlex Air
Fiber Type:	Colorstrand® SD Nylon
Pattern Repeat:	Not Applicable
Size:	24" x 24" (0.609 m x 0.609 m)
Installation Method:	Vertical Ashlar, Quarter Turn, Multi Directional
Stain Release Technology:	Sentry Plus Stain Protection
Soil Release Technology:	Sentry Soil Protection
Foot Traffic Recommendation TARR:	Heavy

SUSTAINABILITY

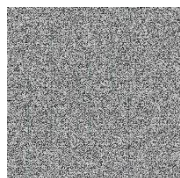
Material Health:	Declare
NSF 140:	EcoFlex Air-NSF 140 Platinum
EPD:	EcoFlex Air EPD
Indoor Air Quality:	GLP 1170

PERFORMANCE

Static:	AATCC-134 Under 3.5 KV
Flammability:	ASTM E 648 Class 1(Glue Down)
Smoke Density:	ASTM E 662 Less than 450

SERVICE

Warranties:	Lifetime Limited Carpet Tile Warranty
-------------	---------------------------------------



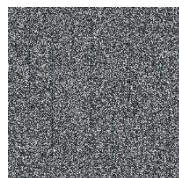
556A
Filtered



556B
Filtered



556C
Filtered



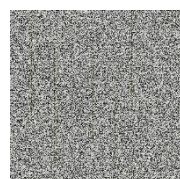
956A
Tangent Teal



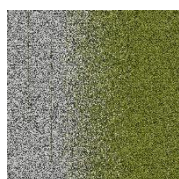
956B
Tangent Teal



956C
Tangent Teal



656A
Jungle



656B
Jungle



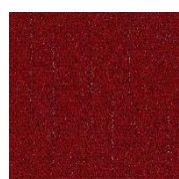
656C
Jungle



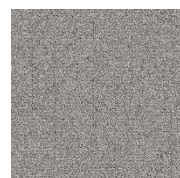
943A
Fractal Fire



943B
Fractal Fire



943C
Fractal Fire



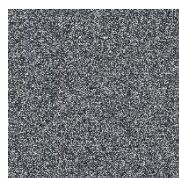
751A
Oatmeal



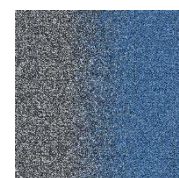
751B
Oatmeal



751C
Oatmeal



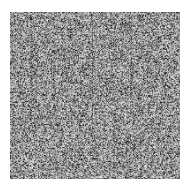
945A
Infinity Indigo



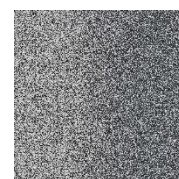
945B
Infinity Indigo



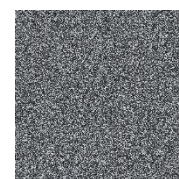
945C
Infinity Indigo



955A
Grey Metal



955B
Grey Metal



955C
Grey Metal





DESIGN

Tufted Pile Weight:	15oz/yd2 (508 g/m2)
Product Type:	Tile
Construction:	Tufted
Surface Texture:	Textured Patterned Multi-Colored Loop
Gauge:	1/12 (47.00 rows per 10 cm)
Density:	6,181
Weight Density:	105,077
Stitches Per Inch:	12.0 (47.24 per 10 cm)
Finished Pile Thickness:	2.82 mm
Total Thickness:	6.82 mm
Dye Method:	Solution Dyed
Backing Material:	EcoFlex Air
Fiber Type:	Colorstrand® SD Nylon
Pattern Repeat:	Not Applicable
Size:	12" x 36" (0.305 m x 0.914 m)
Installation Method:	Vertical Ashlar, Quarter Turn, Multi Directional
Stain Release Technology:	Sentry Plus Stain Protection
Soil Release Technology:	Sentry Soil Protection
Foot Traffic Recommendation TARR:	Heavy

SUSTAINABILITY

Material Health:	Declare
NSF 140:	EcoFlex Air-NSF 140 Platinum
EPD:	EcoFlex Air EPD
Indoor Air Quality:	GLP 1170

PERFORMANCE

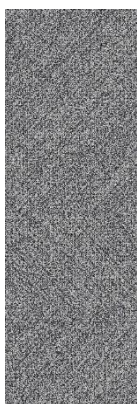
Static:	AATCC-134 Under 3.5 KV
Flammability:	ASTM E 648 Class 1(Glue Down)
Smoke Density:	ASTM E 662 Less than 450

SERVICE

Warranties:	Lifetime Limited Carpet Tile Warranty
-------------	---------------------------------------



924
Platinum



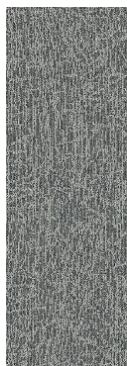
937
Steel



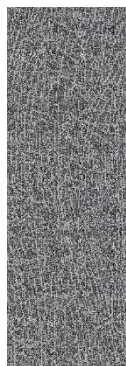
959
Slate



989
Charcoal



924
Platinum



937
Steel



959
Slate



989
Charcoal

DESIGN

Tufted Pile Weight:	15oz/yd2 (508 g/m2)
Product Type:	Tile
Construction:	Tufted
Surface Texture:	Textured Patterned Multi-Colored Loop
Gauge:	1/12 (47.00 rows per 10 cm)
Density:	6,181
Weight Density:	105,077
Stitches Per Inch:	12.0 (47.24 per 10 cm)
Finished Pile Thickness:	2.82 mm
Total Thickness:	6.82 mm
Dye Method:	Solution Dyed
Backing Material:	EcoFlex Air
Fiber Type:	Colorstrand® SD Nylon
Pattern Repeat:	Not Applicable
Size:	12" x 36" (0.305 m x 0.914 m)
Installation Method:	Vertical Ashlar, Quarter Turn, Multi Directional
Stain Release Technology:	Sentry Plus Stain Protection
Soil Release Technology:	Sentry Soil Protection
Foot Traffic Recommendation TARR:	Heavy

SUSTAINABILITY

Material Health:	Declare
NSF 140:	EcoFlex Air-NSF 140 Platinum
EPD:	EcoFlex Air EPD
Indoor Air Quality:	GLP 1170

PERFORMANCE

Static:	AATCC-134 Under 3.5 KV
Flammability:	ASTM E 648 Class 1(Glue Down)
Smoke Density:	ASTM E 662 Less than 450

SERVICE

Warranties:	Lifetime Limited Carpet Tile Warranty
-------------	---------------------------------------



DESIGN

Tufted Pile Weight:	15oz/yd ² (508 g/m ²)
Product Type:	Tile
Construction:	Tufted
Surface Texture:	Textured Patterned Multi-Colored Loop
Gauge:	1/12 (47.00 rows per 10 cm)
Density:	6,181
Weight Density:	105,077
Stitches Per Inch:	12.0 (47.24 per 10 cm)
Finished Pile Thickness:	2.82 mm
Total Thickness:	6.82 mm
Dye Method:	Solution Dyed
Backing Material:	EcoFlex Air
Fiber Type:	Colorstrand® SD Nylon
Pattern Repeat:	Not Applicable
Size:	24" x 24" (0.609 m x 0.609 m)
Installation Method:	Vertical Ashlar, Quarter Turn, Multi Directional
Stain Release Technology:	Sentry Plus Stain Protection
Soil Release Technology:	Sentry Soil Protection
Foot Traffic Recommendation TARR:	Heavy

SUSTAINABILITY

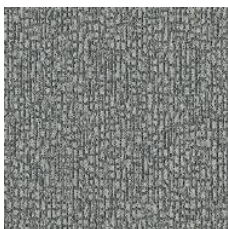
Material Health:	Declare
NSF 140:	EcoFlex Air-NSF 140 Platinum
EPD:	EcoFlex Air EPD
Indoor Air Quality:	GLP 1170

PERFORMANCE

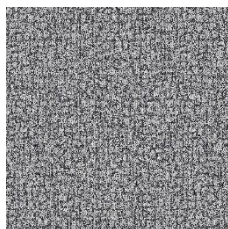
Static:	AATCC-134 Under 3.5 KV
Flammability:	ASTM E 648 Class 1(Glue Down)
Smoke Density:	ASTM E 662 Less than 450

SERVICE

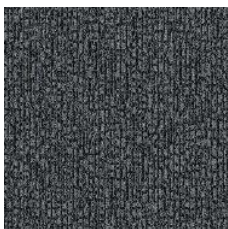
Warranties:	Lifetime Limited Carpet Tile Warranty
-------------	---------------------------------------



924
Platinum



937
Steel



959
Slate



989
Charcoal



DESIGN

Tufted Pile Weight:	15oz/yd ² (508 g/m ²)
Product Type:	Tile
Construction:	Tufted
Surface Texture:	Textured Patterned Multi-Colored Loop
Gauge:	1/12 (47.00 rows per 10 cm)
Density:	6,181
Weight Density:	105,077
Stitches Per Inch:	12.0 (47.24 per 10 cm)
Finished Pile Thickness:	2.82 mm
Total Thickness:	6.82 mm
Dye Method:	Solution Dyed
Backing Material:	EcoFlex Air
Fiber Type:	Colorstrand® SD Nylon
Pattern Repeat:	Not Applicable
Size:	24" x 24" (0.609 m x 0.609 m)
Installation Method:	Vertical Ashlar, Quarter Turn, Multi Directional
Stain Release Technology:	Sentry Plus Stain Protection
Soil Release Technology:	Sentry Soil Protection
Foot Traffic Recommendation TARR:	Heavy

SUSTAINABILITY

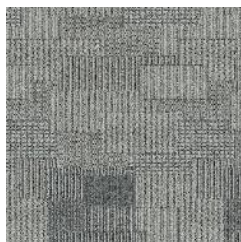
Material Health:	Declare
NSF 140:	EcoFlex Air-NSF 140 Platinum
EPD:	EcoFlex Air EPD
Indoor Air Quality:	GLP 1170

PERFORMANCE

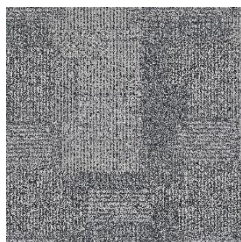
Static:	AATCC-134 Under 3.5 KV
Flammability:	ASTM E 648 Class 1(Glue Down)
Smoke Density:	ASTM E 662 Less than 450

SERVICE

Warranties:	Lifetime Limited Carpet Tile Warranty
-------------	---------------------------------------



924
Platinum



937
Steel



959
Slate



989
Charcoal



DESIGN

Tufted Pile Weight:	15oz/yd ² (508 g/m ²)
Product Type:	Tile
Construction:	Tufted
Surface Texture:	Textured Patterned Multi-Colored Loop
Gauge:	1/12 (47.00 rows per 10 cm)
Density:	6,181
Weight Density:	105,077
Stitches Per Inch:	12.0 (47.24 per 10 cm)
Finished Pile Thickness:	2.82 mm
Total Thickness:	6.82 mm
Dye Method:	Solution Dyed
Backing Material:	EcoFlex Air
Fiber Type:	Colorstrand® SD Nylon
Pattern Repeat:	Not Applicable
Size:	12" x 36" (0.305 m x 0.914m)
Installation Method:	Vertical Ashlar, Quarter Turn, Multi Directional
Stain Release Technology:	Sentry Plus Stain Protection
Soil Release Technology:	Sentry Soil Protection
Foot Traffic Recommendation TARR:	Heavy

SUSTAINABILITY

Material Health:	Declare
NSF 140:	EcoFlex Air-NSF 140 Platinum
EPD:	EcoFlex Air EPD
Indoor Air Quality:	GLP 1170

PERFORMANCE

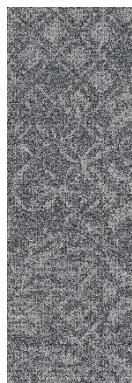
Static:	AATCC-134 Under 3.5 KV
Flammability:	ASTM E 648 Class 1(Glue Down)
Smoke Density:	ASTM E 662 Less than 450

SERVICE

Warranties:	Lifetime Limited Carpet Tile Warranty
-------------	---------------------------------------



924
Platinum



937
Steel



959
Slate

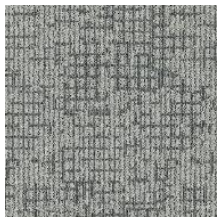


989
Charcoal

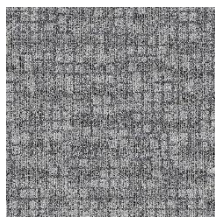


DESIGN

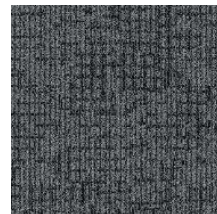
Tufted Pile Weight:	15oz/yd² (508 g/m²)
Product Type:	Tile
Construction:	Tufted
Surface Texture:	Textured Patterned Multi-Colored Loop
Gauge:	1/12 (47.00 rows per 10 cm)
Density:	6,181
Weight Density:	105,077
Stitches Per Inch:	12.0 (47.24 per 10 cm)
Finished Pile Thickness:	2.82 mm
Total Thickness:	6.82 mm
Dye Method:	Solution Dyed
Backing Material:	EcoFlex Air
Fiber Type:	Colorstrand® SD Nylon
Pattern Repeat:	Not Applicable
Size:	24" x 24" (0.609 m x 0.609 m)
Installation Method:	Vertical Ashlar, Quarter Turn, Multi Directional
Stain Release Technology:	Sentry Plus Stain Protection
Soil Release Technology:	Sentry Soil Protection
Foot Traffic Recommendation TARR:	Heavy



924
Platinum



924
Platinum



959
Slate



989
Charcoal

SUSTAINABILITY

Material Health:	Declare
NSF 140:	EcoFlex Air-NSF 140 Platinum
EPD:	EcoFlex Air EPD
Indoor Air Quality:	GLP 1170

PERFORMANCE

Static:	AATCC-134 Under 3.5 KV
Flammability:	ASTM E 648 Class 1(Glue Down)
Smoke Density:	ASTM E 662 Less than 450

SERVICE

Warranties:	Lifetime Limited Carpet Tile Warranty
-------------	--



DESIGN

Tufted Pile Weight:	15oz/yd² (508 g/m²)
Product Type:	Tile
Construction:	Tufted
Surface Texture:	Textured Patterned Multi-Colored Loop
Gauge:	1/12 (47.00 rows per 10 cm)
Density:	6,181
Weight Density:	105,077
Stitches Per Inch:	12.0 (47.24 per 10 cm)
Finished Pile Thickness:	2.82 mm
Total Thickness:	6.82 mm
Dye Method:	Solution Dyed
Backing Material:	EcoFlex Air
Fiber Type:	Colorstrand® SD Nylon
Pattern Repeat:	Not Applicable
Size:	12" x 36" (0.305 m x 0.914m)
Installation Method:	Vertical Ashlar, Quarter Turn, Multi Directional
Stain Release Technology:	Sentry Plus Stain Protection
Soil Release Technology:	Sentry Soil Protection
Foot Traffic Recommendation TARR:	Heavy

SUSTAINABILITY

Material Health:	Declare
NSF 140:	EcoFlex Air-NSF 140 Platinum
EPD:	EcoFlex Air EPD
Indoor Air Quality:	GLP 1170

PERFORMANCE

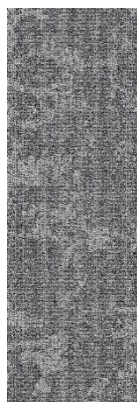
Static:	AATCC-134 Under 3.5 KV
Flammability:	ASTM E 648 Class 1(Glue Down)
Smoke Density:	ASTM E 662 Less than 450

SERVICE

Warranties:	Lifetime Limited Carpet Tile Warranty
-------------	--



924
Platinum



937
Steel



959
Slate



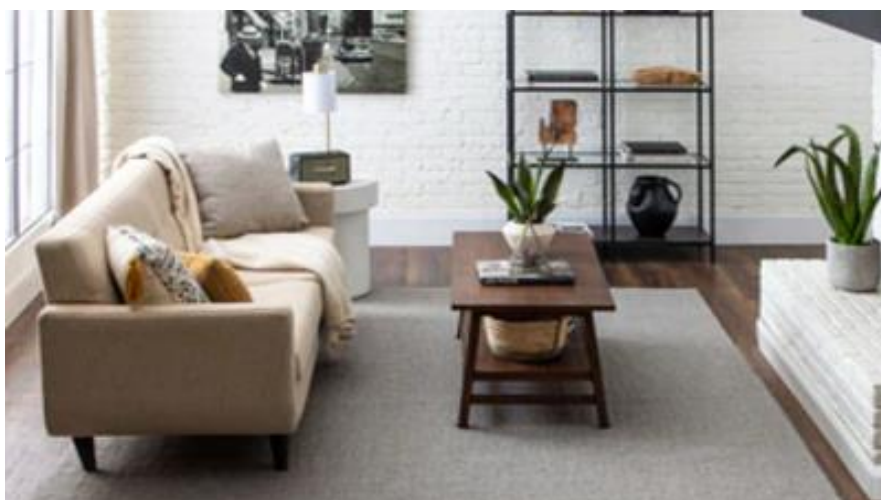
989
Charcoal

Luxe Select



➤ Luxe Select

Collection	Style	Size mm	China made backing
Lichen Community	Bark Community	305*914	EcoFlex One
Lichen Community	Stone Community	305*914	EcoFlex One
Lichen Community	Micro Bloom II	305*914	EcoFlex One
Lichen Community	Macro Bloom II	305*914	EcoFlex One
Nutopia 2.0	Urban Passage II	305*914	EcoFlex One
Nutopia 2.0	Urban Fringe II	305*914	EcoFlex One
Nutopia 2.0	Urban Field II	305*914	EcoFlex One
Pathmakers	Pollinator Path	305*914	EcoFlex One
Pathmakers	Concrete Bloom	305*914	EcoFlex One
Relaxing Floor	RestD	305*914	EcoFlex One
Relaxing Floor	Fractal Ground	305*914	EcoFlex One
Relaxing Floor	MellowD	305*914	EcoFlex One
Relaxing Floor	ChillD	305*914	EcoFlex One
Fractal Fluency	LineD	305*914	EcoFlex One
Fractal Fluency	SquareD	305*914	EcoFlex One
Smart City	Urban Mobility	305*914	EcoFlex One
Smart City	Urban Model	305*914	EcoFlex One
Social Canvas	Art Therapy	305*914	EcoFlex One
Social Canvas	Breaking Boundaries	305*914	EcoFlex One
Social Canvas	Uplifting Others	305*914	EcoFlex One
Social Canvas	Space for All	305*914	EcoFlex One




better
for the
planet


better
for
people


better
for
performance

Lichen Community

The multi-hued, multi-textured lichens that thrive on bark and rock formations once again inspire us in Lichen Community collection. The refined Micro Bloom and Macro Bloom palette includes warm and cool background textures with more neutral and tonal accent colors, which can help to define communal spaces and create unique large-scale installations.





949 Stone

DESIGN

Tufted Pile Weight:	24 oz/yd ² (814 g/m ²)
Product Type:	Tile
Construction:	Tufted
Minimum Sq. Yd.:	No Minimum
Surface Texture:	Patterned Loop
Gauge:	1/12(47.00 rows per 10 cm)
Density:	6,800
Weight Density:	266,264
Stitches Per Inch:	10.1 (39.76 per 10 cm)
Finished Pile Thickness:	7.2 mm
Dye Method:	Solution Dyed
Backing Material:	EcoFlex One
Fiber Type:	Duracolor® Tricor Premium Nylon
Fiber Technology:	Duracolor® by Mohawk Group's Stain Resistant System. Passes GSA requirements for permanent stain resistant carpet.
Pattern Repeat:	Not Applicable
Size:	12" x 36" (.3048 m x .9144 m)
Installation Method:	Monolithic, Monolithic Stepping, Plank Half Lap, Basket Weave, Half Lap, Brick Ashlar, Random, Herringbone
GSA Stain Release Rating:	Pass
Stain Release Technology:	Permanent, Built into Fiber
Soil Release Technology:	EcoSentry Soil Protection
Foot Traffic Recommendation TARR:	Heavy

SUSTAINABILITY

Material Health:	Declare Red List Free
NSF 140:	EcoFlex One-NSF 140 Platinum
EPD:	EcoFlex One EPD
Indoor Air Quality:	GLP 1170

PERFORMANCE

Static:	AATCC-134 Under 3.5 KV
Flammability:	ASTM E 648 Class 1(Glue Down)
Smoke Density:	ASTM E 662 Less than 450

SERVICE

Warranties:	Lifetime Limited Carpet Tile Warranty
-------------	---------------------------------------





858 Bark

DESIGN

Tufted Pile Weight:	24 oz/yd ² (814 g/m ²)
Product Type:	Tile
Construction:	Tufted
Minimum Sq. Yd.:	No Minimum
Surface Texture:	Textured Patterned Loop
Gauge:	1/12(47.00 rows per 10 cm)
Density:	6,595
Weight Density:	266,264
Stitches Per Inch:	9.4 (37.01 per 10 cm)
Total Thickness:	7.2 mm
Dye Method:	Solution Dyed
Backing Material:	EcoFlex One
Fiber Type:	Duracolor® Tricor Premium Nylon
Fiber Technology:	Duracolor® by Mohawk Group's Stain Resistant System. Passes GSA requirements for permanent stain resistant carpet.
Pattern Repeat:	Not Applicable
Size:	12" x 36" (.3048 m x .9144 m)
Installation Method:	Monolithic, Monolithic Stepping, Plank Half Lap, Basket Weave, Half Lap, Brick Ashlar, Random, Herringbone
GSA Stain Release Rating:	Pass
Stain Release Technology:	Permanent, Built into Fiber
Soil Release Technology:	EcoSentry Soil Protection
Foot Traffic Recommendation TARR:	Heavy

SUSTAINABILITY

Material Health:	Declare Red List Free
NSF 140:	EcoFlex One-NSF 140 Platinum
EPD:	EcoFlex One EPD
Indoor Air Quality:	GLP 1170

PERFORMANCE

Static:	AATCC-134 Under 3.5 KV
Flammability:	ASTM E 648 Class 1(Glue Down)
Smoke Density:	ASTM E 662 Less than 450

SERVICE

Warranties:	Lifetime Limited Carpet Tile Warranty
-------------	---------------------------------------





DESIGN

Tufted Pile Weight:	25 oz/yd2 (848 g/m2)
Product Type:	Tile
Construction:	Tufted
Minimum Sq. Yd.:	No Minimum
Surface Texture:	Textured Patterned Loop
Gauge:	1/12(47.00 rows per 10 cm)
Density:	5,769
Weight Density:	266,264
Stitches Per Inch:	9.5 (37.4 per 10 cm)
Total Thickness:	7.2 mm
Dye Method:	Solution Dyed
Backing Material:	EcoFlex One
Fiber Type:	Duracolor® Tricor Premium Nylon
Fiber Technology:	Duracolor® by Mohawk Group's Stain Resistant System. Passes GSA requirements for permanent stain resistant carpet.
Pattern Repeat:	Not Applicable
Size:	12" x 36" (.3048 m x .9144 m)
Installation Method:	Monolithic, Monolithic Stepping, Plank Half Lap, Basket Weave, Half Lap, Brick Ashlar, Random, Herringbone
GSA Stain Release Rating:	Pass
Stain Release Technology:	Permanent, Built into Fiber
Soil Release Technology:	EcoSentry Soil Protection
Foot Traffic Recommendation TARR:	Heavy

SUSTAINABILITY

Material Health:	Declare Red List Free
NSF 140:	EcoFlex One-NSF 140 Platinum
EPD:	EcoFlex One EPD
Indoor Air Quality:	GLP 1170

PERFORMANCE

Static:	AATCC-134 Under 3.5 KV
Flammability:	ASTM E 648 Class 1(Glue Down)
Smoke Density:	ASTM E 662 Less than 450

SERVICE

Warranties:	Lifetime Limited Carpet Tile Warranty
-------------	---------------------------------------



831
Gold Dust Bark



832
Sunburst Bark



837
Moonglow Bark



847
Velvet Snow Bark



856
Jewel Leaf Bark



937
Map Rock Stone



945
Sky Shield Stone



975
Felted Fringe Stone



976
Drifted Root Stone





DESIGN

Tufted Pile Weight:	24 oz/yd2 (814 g/m2)
Product Type:	Tile
Construction:	Tufted
Minimum Sq. Yd.:	No Minimum
Surface Texture:	Textured Patterned Loop
Gauge:	1/12(47.00 rows per 10 cm)
Density:	5,769
Weight Density:	266,264
Stitches Per Inch:	9.5 (37.4 per 10 cm)
Total Thickness:	7.2 mm
Dye Method:	Solution Dyed
Backing Material:	EcoFlex One
Fiber Type:	Duracolor® Tricor Premium Nylon
Fiber Technology:	Duracolor® by Mohawk Group's Stain Resistant System. Passes GSA requirements for permanent stain resistant carpet.
Pattern Repeat:	Not Applicable
Size:	12" x 36" (.3048 m x .9144 m)
Installation Method:	Monolithic, Monolithic Stepping, Plank Half Lap, Basket Weave, Half Lap, Brick Ashlar, Random, Herringbone
GSA Stain Release Rating:	Pass
Stain Release Technology:	Permanent, Built into Fiber
Soil Release Technology:	EcoSentry Soil Protection
Foot Traffic Recommendation TARR:	Heavy

SUSTAINABILITY

Material Health:	Declare Red List Free
NSF 140:	EcoFlex One-NSF 140 Platinum
EPD:	EcoFlex One EPD
Indoor Air Quality:	GLP 1170

PERFORMANCE

Static:	AATCC-134 Under 3.5 KV
Flammability:	ASTM E 648 Class 1(Glue Down)
Smoke Density:	ASTM E 662 Less than 450

SERVICE

Warranties:	Lifetime Limited Carpet Tile Warranty
-------------	---------------------------------------



831
Gold Dust Bark



832
Sunburst Bark



837
Moonglow Bark



847
Velvet Snow Bark



856
Jewel Leaf Bark



937
Map Rock Stone



945
Sky Shield Stone



975
Felted Fringe Stone



976
Drifted Root Stone



Micro Bloom I 945 Sky Shield Stone

Nutopia 2.0

Urban Field II

Urban Fringe II

Urban Passage II

Urban Canvas



Three Tile System

Nutopia 2.0 is designed to transition across the floor or create defined areas in the built environment. Urban Fringe II, Urban Passage II, and Urban Field II's progressive color composition works together as a dynamic system or separately, depending on the desired configuration, end-use and budget. Due to its unique construction and texture, Urban Canvas installs separately, ideally suited for large, open spaces.



Urban Field II 989



Urban Passage II 985



Urban Fringe II 985



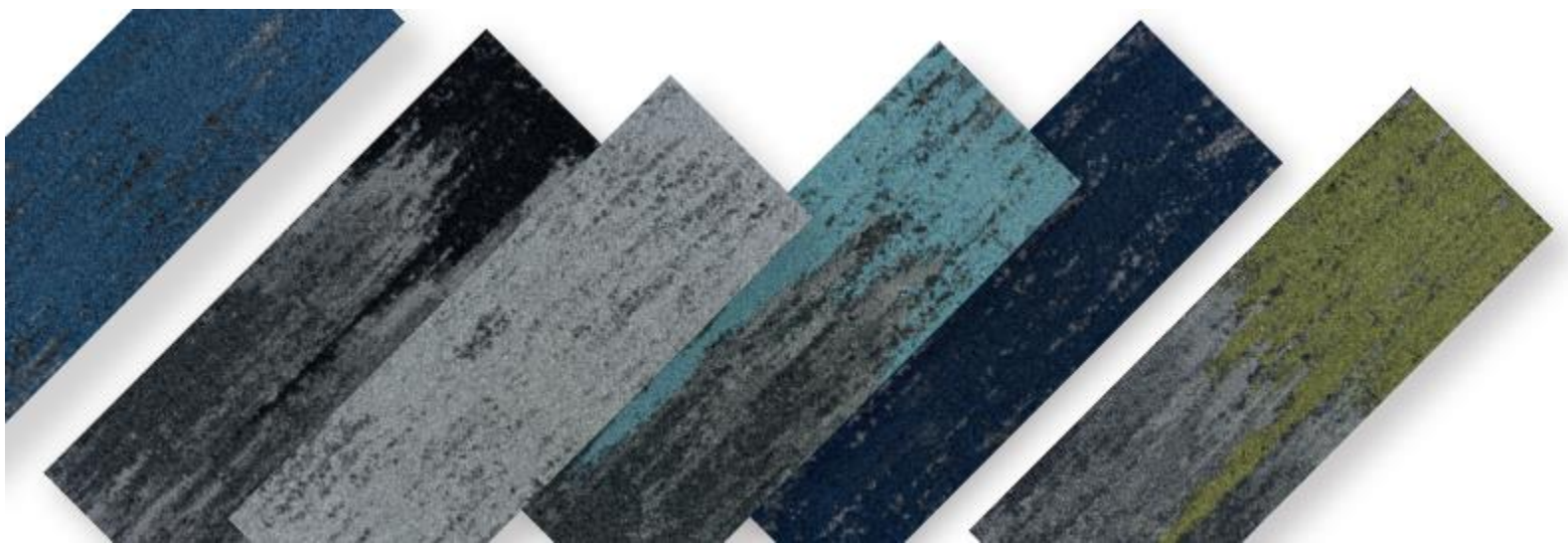
Urban Field II 889



Urban Passage II 861



Urban Fringe II 861



Nutopia 2.0 Collection



DESIGN

Product Type:	Tile
Construction:	Tufted
Minimum SqYd:	No Minimum
Surface Texture:	Textured Patterned Loop
Gauge:	1/12 (47.00 rows per 10 cm)
Tufted Pile Weight:	24 oz/yd2 (814 g/m2)
Finished Pile Thickness:	2.89 mm
Total Thickness:	7.2 mm
Stitches Per Inch:	9.5 (37.40 per 10 cm)
Dye Method:	Solution Dyed
Fiber Type:	Duracolor® Tricor Premium Nylon
Stain Release Technology:	Permanent, Built into Fiber
Soil Release Technology:	EcoSentry Soil Protection
Density:	8,280
Weight Density:	190,440
Backing Material:	EcoFlex One
Installation Method:	Half Lap, Brick Ashlar, Basket Weave, Plank Half Lap, Herringbone
Size:	12" x 36" (.3048 m x .9144 m)
Pattern Repeat:	Not Applicable
Foot Traffic Recommendation TARR:	Severe

SUSTAINABILITY

Material Health:	Declare Red List Free
NSF 140:	EcoFlex One-NSF 140 Platinum
EPD:	EcoFlex One EPD
Indoor Air Quality:	GLP 1170

PERFORMANCE

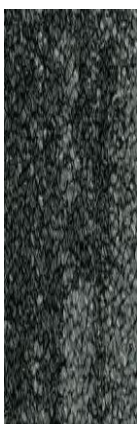
Static:	AATCC-134 Under 3.5 KV
Flammability:	ASTM E 648 Class 1(Glue Down)
Smoke Density:	ASTM E 662 Less than 450

SERVICE

Warranties:	Lifetime Limited Carpet Tile Warranty
-------------	---------------------------------------



889
Museum



989
Pavement



Nutopia 2.0 Collection



DESIGN

Product Type:	Tile
Construction:	Tufted
Minimum SqYd:	No Minimum
Surface Texture:	Textured Patterned Loop
Gauge:	1/12 (47.00 rows per 10 cm)
Tufted Pile Weight:	23 oz/yd2 (780 g/m2)
Finished Pile Thickness:	2.89 mm
Total Thickness:	7.2 mm
Stitches Per Inch:	10.0 (39.37 per 10 cm)
Dye Method:	Solution Dyed
Fiber Type:	Duracolor® Tricor Premium Nylon
Stain Release Technology:	Permanent, Built into Fiber
Soil Release Technology:	EcoSentry Soil Protection
Density:	8,280
Weight Density:	190,440
Backing Material:	EcoFlex One
Installation Method:	Half Lap, Brick Ashlar, Basket Weave, Plank Half Lap, Herringbone
Size:	12" x 36" (.3048 m x .9144 m)
Pattern Repeat:	Not Applicable
Foot Traffic Recommendation TARR:	Severe

SUSTAINABILITY

Material Health:	Declare Red List Free
NSF 140:	EcoFlex One-NSF 140 Platinum
EPD:	EcoFlex One EPD
Indoor Air Quality:	GLP 1170

PERFORMANCE

Static:	AATCC-134 Under 3.5 KV
Flammability:	ASTM E 648 Class 1 (Glue Down)
Smoke Density:	ASTM E 662 Less than 450

SERVICE

Warranties:	Lifetime Limited Carpet Tile Warranty
-------------	---------------------------------------



861
Bridge



862
Neighborhood



867
Uptown



869
Landmark



889
Archway



945
Skyway



956
Green Space



959
Metropolis



975
Riverside



985
Metroscape



989
Darklands



Urban Passage II | 956 Green Space
Urban Field II | 989 Pavement
Urban Passage II | 959 Metropolis
Urban Fringe II | 959 Metropolis

Nutopia 2.0 Collection



DESIGN

Product Type:	Tile
Construction:	Tufted
Minimum SqYd:	No Minimum
Surface Texture:	Textured Patterned Loop
Gauge:	1/12 (47.00 rows per 10 cm)
Tufted Pile Weight:	23 oz/yd ² (780 g/m ²)
Finished Pile Thickness:	2.89 mm
Total Thickness:	7.2 mm
Stitches Per Inch:	10.5 (41.34 per 10 cm)
Dye Method:	Solution Dyed
Fiber Type:	Duracolor® Tricor Premium Nylon
Stain Release Technology:	Permanent, Built into Fiber
Soil Release Technology:	EcoSentry Soil Protection
Density:	7,527
Weight Density:	173,127
Backing Material:	EcoFlex One
Installation Method:	Half Lap, Brick Ashlar, Basket Weave, Plank Half Lap, Herringbone
Size:	12" x 36" (.3048 m x .9144 m)
Pattern Repeat:	Not Applicable
Foot Traffic Recommendation TARR:	Severe

SUSTAINABILITY

Material Health:	Declare Red List Free
NSF 140:	EcoFlex One-NSF 140 Platinum
EPD:	EcoFlex One EPD
Indoor Air Quality:	GLP 1170

PERFORMANCE

Static:	AATCC-134 Under 3.5 KV
Flammability:	ASTM E 648 Class 1(Glue Down)
Smoke Density:	ASTM E 662 Less than 450

SERVICE

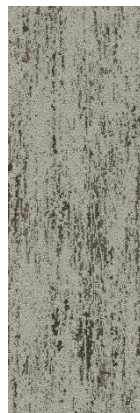
Warranties:	Lifetime Limited Carpet Tile Warranty
-------------	---------------------------------------



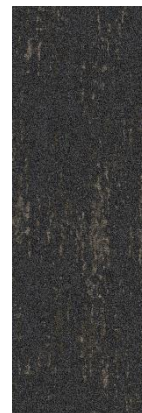
861
Bridge



862
Neighborhood



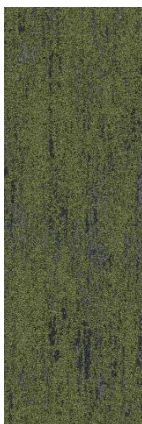
867
Uptown



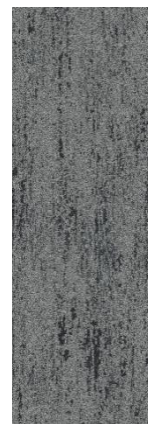
869
Landmark



945
Skyway



956
Green Space



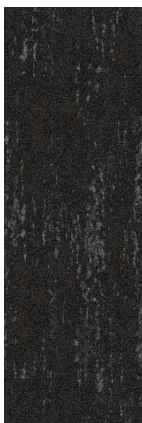
959
Metropolis



975
Riverside



985
Metroscape



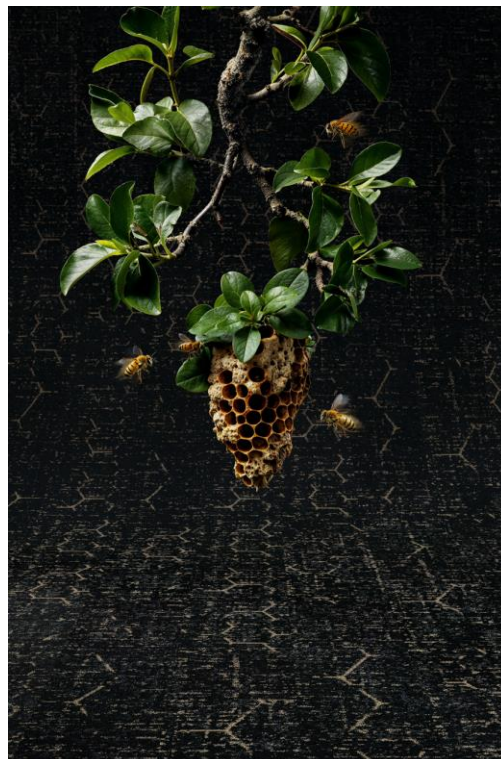
989
Darklands





Pathmakers

By looking deeply into the world around us, we discover nature's systems of care—how each part of an ecosystem is connected and helps to sustain the whole. Even the tiny bee is integral, its daily paths of pollination generating new plants, in turn helping to sustain all life. With bees as inspiration, we created the Pathmakers carpet plank collection.





DESIGN

Product Type:	Tile
Construction:	Tufted
Minimum SqYd:	No Minimum
Surface Texture:	Textured Patterned Loop
Gauge:	1/12 (47.00 rows per 10 cm)
Tufted Pile Weight:	22 oz/yd2 (746 g/m2)
Finished Pile Thickness:	2.93 mm
Total Thickness:	7.2 mm
Stitches Per Inch:	10.0 (39.37 per 10 cm)
Dye Method:	Solution Dyed
Fiber Type:	Duracolor® Tricor Premium Nylon
Stain Release Technology:	Permanent, Built into Fiber
Soil Release Technology:	EcoSentry Soil Protection
Density:	8,280
Weight Density:	192,472
Backing Material:	EcoFlex One
Installation Method:	Monolithic, Half Lap, Brick Ashlar, Basket Weave, Plank Half Lap, Herringbone, Random
Size:	12" x 36" (.3048 m x .9144 m)
Pattern Repeat:	Not Applicable
Foot Traffic Recommendation TARR:	Severe

SUSTAINABILITY

Material Health:	Declare Red List Free
NSF 140:	EcoFlex One-NSF 140 Platinum
EPD:	EcoFlex One EPD
Indoor Air Quality:	GLP 1170

PERFORMANCE

Static:	AATCC-134 Under 3.5 KV
Flammability:	ASTM E 648 Class 1 (Glue Down)
Smoke Density:	ASTM E 662 Less than 450

SERVICE

Warranties:	Lifetime Limited Carpet Tile Warranty
-------------	---------------------------------------



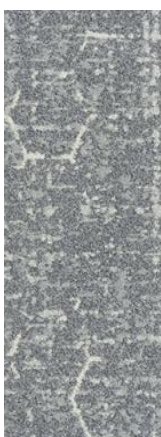
739 Birdsong Light



829 Wildwood Light



868 Wildwood Dark



927 Serene Dark



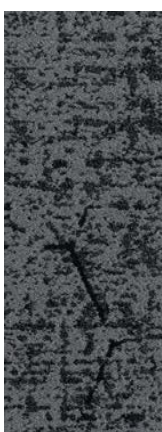
859 Oud Light



978 Oud Dark



981 Nocturnal Gold



989 Nocturnal Light



987 Nocturnal Silver





DESIGN

Product Type:	Tile
Construction:	Tufted
Minimum SqYd:	No Minimum
Surface Texture:	Textured Patterned Loop
Gauge:	1/12 (47.00 rows per 10 cm)
Tufted Pile Weight:	22 oz/yd2 (746 g/m2)
Finished Pile Thickness:	2.93 mm
Total Thickness:	7.2 mm
Stitches Per Inch:	10.0 (39.37 per 10 cm)
Dye Method:	Solution Dyed
Fiber Type:	Duracolor® Tricor Premium Nylon
Stain Release Technology:	Permanent, Built into Fiber
Soil Release Technology:	EcoSentry Soil Protection
Density:	8,280
Weight Density:	192,472
Backing Material:	EcoFlex One
Installation Method:	Monolithic, Half Lap, Brick Ashlar, Basket Weave, Plank Half Lap, Herringbone, Random
Size:	12" x 36" (.3048 m x .9144 m)
Pattern Repeat:	Not Applicable
Foot Traffic Recommendation TARR:	Severe

SUSTAINABILITY

Material Health:	Declare Red List Free
NSF 140:	EcoFlex One-NSF 140 Platinum
EPD:	EcoFlex One EPD
Indoor Air Quality:	GLP 1170

PERFORMANCE

Static:	AATCC-134 Under 3.5 KV
Flammability:	ASTM E 648 Class 1 (Glue Down)
Smoke Density:	ASTM E 662 Less than 450

SERVICE

Warranties:	Lifetime Limited Carpet Tile Warranty
-------------	---------------------------------------



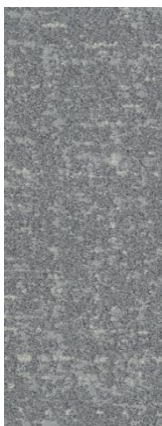
739 Birdsong Light



829 Wildwood Light



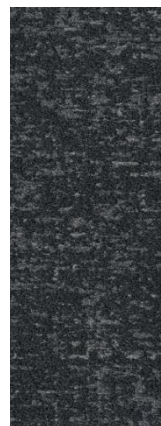
868 Wildwood Dark



927 Serene Dark



859 Oud Light



978 Oud Dark



981 Nocturnal Gold



989 Nocturnal Light



987 Nocturnal Silver

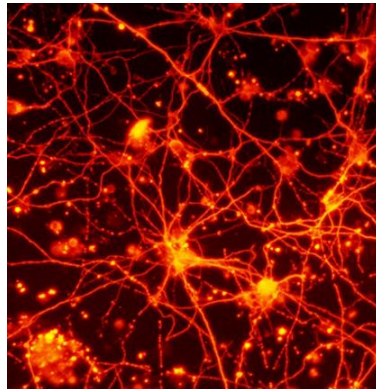


Pollinator Path | 739
Concrete Bloom | 739

RELAXING FLOORS



This collection is the culmination of art, science and human-centered design based on fractal patterns. Relaxing Floors utilizes fractals to tap into our innate affinity for nature and activate our bodies' stress-relieving response to similar patterns.



Click - Ohio University Video
<https://mohawk360.showpad.com/share/Q2YMt2dES8iQQt0dM3I5m>



829
Focus



922
Sanctuary



946
Awakening



949
Easy Breezy



961
Harmony



965
Blue Bliss



967
Pause



969
Solitude

DESIGN

Tufted Pile Weight:	22 oz/yd ² (746 g/m ²)
Product Type:	Tile
Construction:	Tufted
Minimum Sq. Yd.:	No Minimum
Surface Texture:	Textured Patterned Multi-Colored Loop
Gauge:	1/12 (47.00 rows per 10 cm)
Density:	10,285
Weight Density:	226,285
Stitches Per Inch:	28.5 (112.20 per 10 cm)
Total Thickness:	7.2 mm
Dye Method:	Solution Dyed
Backing Material:	EcoFlex One
Fiber Type:	Duracolor® Tricor Premium Nylon
Fiber Technology:	Duracolor® by Mohawk Group's Stain Resistant System. Passes GSA requirements for permanent stain resistant carpet.
Pattern Repeat:	Not Applicable
Size:	12" x 36" (.3048 m x .9144 m)
Installation Method:	Monolithic, Half Lap, Brick Ashlar, Basket Weave, Plank Half Lap, Monolithic Stepping, Random, Herringbone
GSA Stain Release Rating:	Pass
Stain Release Technology:	Permanent, Built into Fiber
Soil Release Technology:	EcoSentry Soil Protection
Foot Traffic Recommendation TARR:	Heavy

SUSTAINABILITY

Material Health:	Declare Red List Free
NSF 140:	EcoFlex One-NSF 140 Platinum
EPD:	EcoFlex One EPD
Indoor Air Quality:	GLP 1170

PERFORMANCE

Static:	AATCC-134 Under 3.5 KV
Flammability:	ASTM E 648 Class 1(Glue Down)
Smoke Density:	ASTM E 662 Less than 450

SERVICE

Warranties:	Lifetime Limited Carpet Tile Warranty
-------------	---------------------------------------



Relaxing Floors Collection



DESIGN

Tufted Pile Weight:	23 oz/yd ² (780 g/m ²)
Product Type:	Tile
Construction:	Tufted
Minimum Sq. Yd.:	No Minimum
Surface Texture:	Textured Patterned Multi-Colored Loop
Gauge:	1/12 (47.00 rows per 10 cm)
Density:	9,409
Weight Density:	216,409
Stitches Per Inch:	28.5 (112.20 per 10 cm)
Total Thickness:	7.2 mm
Dye Method:	Solution Dyed
Backing Material:	EcoFlex One
Fiber Type:	Duracolor® Tricor Premium Nylon
Fiber Technology:	Duracolor® by Mohawk Group's Stain Resistant System. Passes GSA requirements for permanent stain resistant carpet.
Pattern Repeat:	Not Applicable
Size:	12" x 36" (.3048 m x .9144 m)
Installation Method:	Monolithic, Half Lap, Brick Ashlar, Basket Weave, Plank Half Lap, Monolithic Stepping, Random, Herringbone
GSA Stain Release Rating:	Pass
Stain Release Technology:	Permanent, Built into Fiber
Soil Release Technology:	EcoSentry Soil Protection
Foot Traffic Recommendation TARR:	Heavy

SUSTAINABILITY

Material Health:	Declare Red List Free
NSF 140:	EcoFlex One-NSF 140 Platinum
EPD:	EcoFlex One EPD
Indoor Air Quality:	GLP 1170

PERFORMANCE

Static:	AATCC-134 Under 3.5 KV
Flammability:	ASTM E 648 Class 1 (Glue Down)
Smoke Density:	ASTM E 662 Less than 450

SERVICE

Warranties:	Lifetime Limited Carpet Tile Warranty
-------------	---------------------------------------



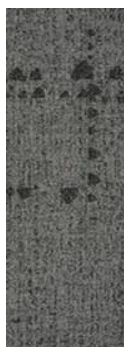
829
Focus



922
Sanctuary



946
Awakening



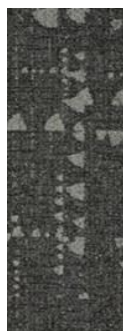
949
Easy Breezy



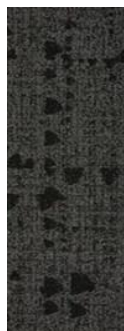
961
Harmony



965
Blue Bliss



967
Pause



969
Solitude





DESIGN

Tufted Pile Weight:	23 oz/yd ² (780 g/m ²)
Product Type:	Tile
Construction:	Tufted
Minimum Sq. Yd.:	No Minimum
Surface Texture:	Textured Patterned Multi-Colored Loop
Gauge:	1/12 (47.00 rows per 10 cm)
Density:	9,098
Weight Density:	209,274
Stitches Per Inch:	28.5 (112.20 per 10 cm)
Total Thickness:	7.2 mm
Dye Method:	Solution Dyed
Backing Material:	EcoFlex One
Fiber Type:	Duracolor® Tricor Premium Nylon
Fiber Technology:	Duracolor® by Mohawk Group's Stain Resistant System. Passes GSA requirements for permanent stain resistant carpet.
Pattern Repeat:	Not Applicable
Size:	12" x 36" (.3048 m x .9144 m)
Installation Method:	Monolithic, Half Lap, Brick Ashlar, Basket Weave, Plank Half Lap, Monolithic Stepping, Random, Herringbone
GSA Stain Release Rating:	Pass
Stain Release Technology:	Permanent, Built into Fiber
Soil Release Technology:	EcoSentry Soil Protection
Foot Traffic Recommendation TARR:	Heavy

SUSTAINABILITY

Material Health:	Declare Red List Free
NSF 140:	EcoFlex One-NSF 140 Platinum
EPD:	EcoFlex One EPD
Indoor Air Quality:	GLP 1170

PERFORMANCE

Static:	AATCC-134 Under 3.5 KV
Flammability:	ASTM E 648 Class 1(Glue Down)
Smoke Density:	ASTM E 662 Less than 450

SERVICE

Warranties:	Lifetime Limited Carpet Tile Warranty
-------------	---------------------------------------



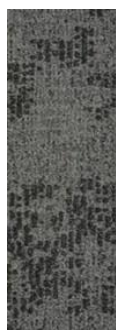
829
Focus



922
Sanctuary



946
Awakening



949
Easy Breezy



961
Harmony



965
Blue Bliss



967
Pause



969
Solitude



Relaxing Floors Collection



DESIGN

Tufted Pile Weight:	22 oz/yd ² (746 g/m ²)
Product Type:	Tile
Construction:	Tufted
Minimum Sq. Yd.:	No Minimum
Surface Texture:	Textured Patterned Multi-Colored Loop
Gauge:	1/12 (47.00 rows per 10 cm)
Density:	10,025
Weight Density:	220,556
Stitches Per Inch:	28.5 (112.20 per 10 cm)
Total Thickness:	7.2 mm
Dye Method:	Solution Dyed
Backing Material:	EcoFlex One
Fiber Type:	Duracolor® Tricor Premium Nylon
Fiber Technology:	Duracolor® by Mohawk Group's Stain Resistant System. Passes GSA requirements for permanent stain resistant carpet.
Pattern Repeat:	Not Applicable
Size:	12" x 36" (.3048 m x .9144 m)
Installation Method:	Monolithic, Half Lap, Brick Ashlar, Basket Weave, Plank Half Lap, Monolithic Stepping, Random, Herringbone
GSA Stain Release Rating:	Pass
Stain Release Technology:	Permanent, Built into Fiber
Soil Release Technology:	EcoSentry Soil Protection
Foot Traffic Recommendation TARR:	Heavy

SUSTAINABILITY

Material Health:	Declare Red List Free
NSF 140:	EcoFlex One-NSF 140 Platinum
EPD:	EcoFlex One EPD
Indoor Air Quality:	GLP 1170

PERFORMANCE

Static:	AATCC-134 Under 3.5 KV
Flammability:	ASTM E 648 Class 1(Glue Down)
Smoke Density:	ASTM E 662 Less than 450

SERVICE

Warranties:	Lifetime Limited Carpet Tile Warranty
-------------	---------------------------------------



829
Focus



922
Sanctuary



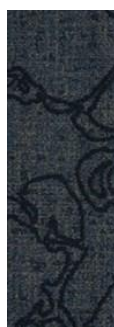
946
Awakening



949
Easy Breeze



961
Harmony



965
Blue Bliss



967
Pause



969
Solitude



RestD | 967 Pause
ChillD | 949 Easy Breezy

Fractal Fluency Collection



DESIGN

Product Type:	Tile
Construction:	Tufted
Minimum SqYd:	No Minimum
Surface Texture:	Textured Patterned Multi-Colored Loop
Gauge:	1/12 (47.24 rows per 10 cm)
Tufted Pile Weight:	18 oz/yd ² (610 g/m ²)
Finished Pile Thickness:	3.17 mm
Total Thickness:	6.97 mm
Stitches Per Inch:	121 (47.64 per 10 cm)
Dye Method:	Solution Dyed
Fiber Type:	Duracolor® Tricor Premium Nylon
Stain Release Technology:	Permanent, Built into Fiber
Soil Release Technology:	EcoSentry Soil Treatment
Density:	5,445
Weight Density:	97,200
Backing Material:	EcoFlex One
Installation Method:	Half Lap, Brick Ashlar, Random, Herringbone
Size:	12" x 36" (30.48 cm x 91.44 cm)
Pattern Repeat:	Not Applicable

SUSTAINABILITY

Material Health:	Declare Red List Free
NSF 140:	EcoFlex One-NSF 140 Platinum
EPD:	EcoFlex One EPD
Indoor Air Quality:	GLP 1170

PERFORMANCE

Static:	AATCC-134 Under 3.5 KV
Flammability:	ASTM E 648 Class 1 (Glue Down)
Smoke Density:	ASTM E 662 Less than 450

SERVICE

Warranties:	Lifetime Limited Carpet Tile Warranty
-------------	---------------------------------------



535
Cornflower



545
Royal



839
Flax



859
Taupe



929
Silver



949
Mineral



969
Iron



989
Charcoal



Fractal Fluency Collection



DESIGN

Product Type:	Tile
Construction:	Tufted
Minimum SqYd:	No Minimum
Surface Texture:	Textured Patterned Multi-Colored Loop
Gauge:	1/12 (47.24 rows per 10 cm)
Tufted Pile Weight:	18 oz/yd ² (610 g/m ²)
Finished Pile Thickness:	3.17 mm
Total Thickness:	6.97 mm
Stitches Per Inch:	121 (47.64 per 10 cm)
Dye Method:	Solution Dyed
Fiber Type:	Duracolor® Tricor Premium Nylon
Stain Release Technology:	Permanent, Built into Fiber
Soil Release Technology:	EcoSentry Soil Treatment
Density:	5,184
Weight Density:	97,200
Backing Material:	EcoFlex One
Installation Method:	Half Lap, Brick Ashlar, Random, Herringbone
Size:	12" x 36" (30.48 cm x 91.44 cm)
Pattern Repeat:	Not Applicable

SUSTAINABILITY

Material Health:	Declare Red List Free
NSF 140:	EcoFlex One-NSF 140 Platinum
EPD:	EcoFlex One EPD
Indoor Air Quality:	GLP 1170

PERFORMANCE

Static:	AATCC-134 Under 3.5 KV
Flammability:	ASTM E 648 Class 1 (Glue Down)
Smoke Density:	ASTM E 662 Less than 450

SERVICE

Warranties:	Lifetime Limited Carpet Tile Warranty
-------------	---------------------------------------


535
Cornflower

545
Royal

839
Flax

859
Taupe

929
Silver

949
Mineral

969
Iron

989
Charcoal



Smart City

Mohawk Group believes design is a journey, and our next stop is Smart City—a Living Product Certified carpet plank system inspired by some of the world's most connected places. Urban Model offers an intricate base texture presented in three distinctive hues and contrast levels, while Urban Mobility layers a metropolitan subway line pattern in six sophisticated color options.



New York



London



Shanghai



Berlin



Paris



Istanbul





DESIGN

Product Type:	Tile
Construction:	Tufted
Minimum Sq Yd:	No Minimum
Surface Texture:	Textured Patterned Loop
Gauge:	1/12 (47.00 rows per 10 cm)
Tufted Pile Weight:	22 oz/yd2 (746 g/m2)
Finished Pile Thickness:	2.89 mm
Total Thickness: Stitches	7.2 mm
Per Inch:	9.5 (37.40 per 10 cm)
Dye Method:	Solution Dyed
Fiber Type:	Duracolor® Tricor Premium Nylon
Stain Release Technology:	Permanent, Built into Fiber
Soil Release Technology:	EcoSentry Soil Protection
Density:	6,236
Weight Density:	137,196
Backing Material:	EcoFlex One
Installation Method:	Half Lap, Brick Ashlar, Basket Weave, Plank Half Lap, Random, Herringbone
Size:	12" x 36" (.3048 m x .9144 m)
Pattern Repeat:	Not Applicable
Foot Traffic Recommendation TARR:	Heavy

SUSTAINABILITY

Material Health:	Declare Red List Free
NSF 140:	EcoFlex One-NSF 140 Platinum
EPD:	EcoFlex One EPD
Indoor Air Quality:	GLP 1170

PERFORMANCE

Static:	AATCC-134 Under 3.5 KV
Flammability:	ASTM E 648 Class 1(Glue Down)
Smoke Density:	ASTM E 662 Less than 450

SERVICE

Warranties:	Lifetime Limited Carpet Tile Warranty
-------------	---------------------------------------



949
Midtown



965
Waterfront



967
Downtown





922
Orange Line



946
Green Line



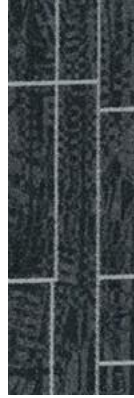
949
Grey Line



961
Gold Line



965
Blue Line



967
White Line

DESIGN

Product Type:	Tile
Construction:	Tufted
Minimum Sq Yd:	No Minimum
Surface Texture:	Textured Patterned Loop
Gauge:	1/12 (47.00 rows per 10 cm)
Tufted Pile Weight:	22 oz/yd ² (746 g/m ²)
Finished Pile Thickness:	2.89 mm
Total Thickness: Stitches	7.2 mm
Per Inch:	9.5 (37.70 per 10 cm)
Dye Method:	Solution Dyed
Fiber Type:	Duracolor® Tricor Premium Nylon
Stain Release Technology:	Permanent, Built into Fiber
Soil Release Technology:	EcoSentry Soil Protection
Density:	6,187
Weight Density:	136,125
Backing Material:	EcoFlex One
Installation Method:	Half Lap, Brick Ashlar, Basket Weave, Plank Half Lap, Random, Herringbone
Size:	12" x 36" (.3048 m x .9144 m)
Pattern Repeat:	Not Applicable
Foot Traffic Recommendation TARR:	Heavy

SUSTAINABILITY

Material Health:	Declare Red List Free
NSF 140:	EcoFlex One-NSF 140 Platinum
EPD:	EcoFlex One EPD
Indoor Air Quality:	GLP 1170

PERFORMANCE

Static:	AATCC-134 Under 3.5 KV
Flammability:	ASTM E 648 Class 1(Glue Down)
Smoke Density:	ASTM E 662 Less than 450

SERVICE

Warranties:	Lifetime Limited Carpet Tile Warranty
-------------	---------------------------------------



Urban Mobility | 949 Grey Line
Urban Model | 949 Midtown

Social Canvas

The Social Canvas collection speaks to this triumph of the human spirit. This collection is a result of a collaboration with ArtLifting, using the work of artist Charlie French as a point of departure. Each time you specify from the Social Canvas collection, Mohawk will donate to Susan G. Komen through our Specify for a Cure program, broadening the positive impact of your work even more.



Click – Social Canvas Video

<https://mohawk360.showpad.com/share/oCaYEA8oizujIORTOumW8>

Social Canvas Collection



DESIGN

Tufted Pile Weight:	24 oz/yd ² (814 g/m ²)
Product Type:	Tile
Construction:	Tufted
Minimum Sq. Yd.:	No Minimum
Surface Texture:	Textured Patterned Multi-Colored Loop
Gauge:	1/12 (47.00 rows per 10 cm)
Density:	7,322
Weight Density:	226,285
Stitches Per Inch:	9.17 (36.09 per 10 cm)
Total Thickness:	7.2 mm
Dye Method:	Solution Dyed
Backing Material:	EcoFlex One
Fiber Type:	Duracolor® Tricor Premium Nylon
Fiber Technology:	Duracolor® by Mohawk Group's Stain Resistant System. Passes GSA requirements for permanent stain resistant carpet.
Pattern Repeat:	Not Applicable
Size:	12" x 36" (.3048 m x .9144 m)
Installation Method:	Monolithic, Half Lap, Brick Ashlar, Basket Weave, Plank Half Lap, Monolithic Stepping, Random, Herringbone
GSA Stain Release Rating:	Pass
Stain Release Technology:	Permanent, Built into Fiber
Soil Release Technology:	EcoSentry Soil Protection
Foot Traffic Recommendation TARR:	Heavy

SUSTAINABILITY

Material Health:	Declare Red List Free
NSF 140:	EcoFlex One-NSF 140 Platinum
EPD:	EcoFlex One EPD
Indoor Air Quality:	GLP 1170

PERFORMANCE

Static:	AATCC-134 Under 3.5 KV
Flammability:	ASTM E 648 Class 1(Glue Down)
Smoke Density:	ASTM E 662 Less than 450

SERVICE

Warranties:	Lifetime Limited Carpet Tile Warranty
-------------	---------------------------------------



535
Flow State



935
Creative Soul



936
Fresh Paint



937
Gallery



829
Journal



989
Portfolio



938
Portrait



729
True Self



Uplifting Others | 535 Flow State

Social Canvas Collection



DESIGN

Tufted Pile Weight:	25 oz/yd ² (848 g/m ²)
Product Type:	Tile
Construction:	Tufted
Minimum Sq. Yd.:	No Minimum
Surface Texture:	Textured Patterned Multi-Colored Loop
Gauge:	1/12 (47.00 rows per 10 cm)
Density:	7,258
Weight Density:	226,285
Stitches Per Inch:	9.17 (36.09 per 10 cm)
Total Thickness:	7.2 mm
Dye Method:	Solution Dyed
Backing Material:	EcoFlex One
Fiber Type:	Duracolor® Tricor Premium Nylon
Fiber Technology:	Duracolor® by Mohawk Group's Stain Resistant System. Passes GSA requirements for permanent stain resistant carpet.
Pattern Repeat:	Not Applicable
Size:	12" x 36" (.3048 m x .9144 m)
Installation Method:	Monolithic, Half Lap, Brick Ashlar, Basket Weave, Plank Half Lap, Monolithic Stepping, Random, Herringbone
GSA Stain Release Rating:	Pass
Stain Release Technology:	Permanent, Built into Fiber
Soil Release Technology:	EcoSentry Soil Protection
Foot Traffic Recommendation TARR:	Heavy

SUSTAINABILITY

Material Health:	Declare Red List Free
NSF 140:	EcoFlex One-NSF 140 Platinum
EPD:	EcoFlex One EPD
Indoor Air Quality:	GLP 1170

PERFORMANCE

Static:	AATCC-134 Under 3.5 KV
Flammability:	ASTM E 648 Class 1(Glue Down)
Smoke Density:	ASTM E 662 Less than 450

SERVICE

Warranties:	Lifetime Limited Carpet Tile Warranty
-------------	---------------------------------------



535
Flow State



935
Creative Soul



936
Fresh Paint



937
Gallery



829
Journal



989
Portfolio



938
Portrait



729
True Self



Social Canvas Collection



DESIGN

Tufted Pile Weight:	25 oz/yd ² (848 g/m ²)
Product Type:	Tile
Construction:	Tufted
Minimum Sq. Yd.:	No Minimum
Surface Texture:	Textured Patterned Multi-Colored Loop
Gauge:	1/12 (47.00 rows per 10 cm)
Density:	7,692
Weight Density:	226,285
Stitches Per Inch:	9 (35.43 per 10 cm)
Total Thickness:	7.2 mm
Dye Method:	Solution Dyed
Backing Material:	EcoFlex One
Fiber Type:	Duracolor® Tricor Premium Nylon
Fiber Technology:	Duracolor® by Mohawk Group's Stain Resistant System. Passes GSA requirements for permanent stain resistant carpet.
Pattern Repeat:	Not Applicable
Size:	12" x 36" (.3048 m x .9144 m)
Installation Method:	Monolithic, Half Lap, Brick Ashlar, Basket Weave, Plank Half Lap, Monolithic Stepping, Random, Herringbone
GSA Stain Release Rating:	Pass
Stain Release Technology:	Permanent, Built into Fiber
Soil Release Technology:	EcoSentry Soil Protection
Foot Traffic Recommendation TARR:	Heavy

SUSTAINABILITY

Material Health:	Declare Red List Free
NSF 140:	EcoFlex One-NSF 140 Platinum
EPD:	EcoFlex One EPD
Indoor Air Quality:	GLP 1170

PERFORMANCE

Static:	AATCC-134 Under 3.5 KV
Flammability:	ASTM E 648 Class 1(Glue Down)
Smoke Density:	ASTM E 662 Less than 450

SERVICE

Warranties:	Lifetime Limited Carpet Tile Warranty
-------------	---------------------------------------



535
Flow State



935
Creative Soul



936
Fresh Paint



937
Gallery



829
Journal



989
Portfolio



938
Portrait



729
True Self



Art Therapy | 727 True Self

Social Canvas Collection



DESIGN

Tufted Pile Weight:	25 oz/yd ² (848 g/m ²)
Product Type:	Tile
Construction:	Tufted
Minimum Sq. Yd.:	No Minimum
Surface Texture:	Textured Patterned Multi-Colored Loop
Gauge:	1/12 (47.00 rows per 10 cm)
Density:	7,377
Weight Density:	226,285
Stitches Per Inch:	9.17 (36.09 per 10 cm)
Total Thickness:	7.2 mm
Dye Method:	Solution Dyed
Backing Material:	EcoFlex One
Fiber Type:	Duracolor® Tricor Premium Nylon
Fiber Technology:	Duracolor® by Mohawk Group's Stain Resistant System. Passes GSA requirements for permanent stain resistant carpet.
Pattern Repeat:	Not Applicable
Size:	12" x 36" (.3048 m x .9144 m)
Installation Method:	Monolithic, Half Lap, Brick Ashlar, Basket Weave, Plank Half Lap, Monolithic Stepping, Random, Herringbone
GSA Stain Release Rating:	Pass
Stain Release Technology:	Permanent, Built into Fiber
Soil Release Technology:	EcoSentry Soil Protection
Foot Traffic Recommendation TARR:	Heavy

SUSTAINABILITY

Material Health:	Declare Red List Free
NSF 140:	EcoFlex One-NSF 140 Platinum
EPD:	EcoFlex One EPD
Indoor Air Quality:	GLP 1170

PERFORMANCE

Static:	AATCC-134 Under 3.5 KV
Flammability:	ASTM E 648 Class 1(Glue Down)
Smoke Density:	ASTM E 662 Less than 450

SERVICE

Warranties:	Lifetime Limited Carpet Tile Warranty
-------------	---------------------------------------



535
Flow State



935
Creative Soul



936
Fresh Paint



937
Gallery



829
Journal



989
Portfolio



938
Portrait



729
True Self



"I like colors and shapes.
Sometimes I do (paint) a lot. Sometimes
I don't think about it. I have fun!"
— Charlie French

Space for All | 535 Flow State
Space for All | 937 Gallery

Commercial Carpet Tile

LIMITED LIFETIME WARRANTY

This limited warranty applies only to the original purchaser of Mohawk Group* carpet tiles for indoor commercial installations. This warranty applies only to product constructed with the following backing and fiber systems:

Backings:

EcoFlex® NXT, EcoFlex® AIR, EcoFlex® Matrix, and EcoFlex® ONE

Fibers:

Colorstrand, Duracolor, Antron or other Mohawk Group nylon fiber systems

The use of Mohawk Group branded adhesives is required to ensure optimum results and are the only approved adhesives warranted by Mohawk Group. Substrates must be prepared using Mohawk Group's recommended floor preparation procedures.

Provided the designated carpet has been properly installed and maintained in the specified commercial location in strict accordance with Mohawk Group's instructions and procedures and subject to the limitations set forth herein, including the specifications and manufacturing tolerances established for the product, Mohawk Group warrants to the original Owner, the following:

I. ITEMS UNDER WARRANTY

Mohawk Group warrants the following for the normal useful life of the carpet**:

1. **Wear** – Carpet tiles will not wear more than 10% of their surface pile weight from abrasive wear. "Abrasive wear" means fiber loss from the carpet through normal abrasion, not crushing or flattening of the carpet pile in any area, nor staining, soiling, fading, or change in carpet appearance, nor fiber loss due to abnormal usage of the carpet;
2. **Static** – Carpet tiles will not give static discharges in excess of 3.5 KV when tested under the step portion of AATCC Test Method 134 (Step);

3. **Edge Ravel/Zippering** – Carpet tiles will not edge ravel or zipper.
4. **Delamination** – Carpet tiles will not delaminate (chair pads are recommended for maximum appearance retention and to deter delamination);
5. **Dimensional Stability** – Carpet tiles will not lose their dimensional stability per the AACHEN test ISO 2551.

II. LIMITATIONS – THIS WARRANTY DOES NOT COVER

1. Disfigurement or damage caused by abnormal use or any damage to the carpet not arising out of a manufacturing defect in the carpet, including such disfigurement or damage as tears, burns, pulls, cuts, floods, excessive alkalinity, excessive moisture, installation on stairs, damage resulting from improper cleaning agents or methods, neglect, or damage in transit;
2. Edge ravel where carpet is cut for access to floor outlets and around trench header ducts;
3. Abuse by any athletic equipment such as roller skates, ski boots, or golf shoes;
4. Differential fading from light exposure, shading, pile crush, dye lot differences, or soiling;
5. Any condition that would have been visible upon inspection prior to the installation;
6. Any condition resulting from other than ordinary wear or from any use for which the product was not designed;
7. Any issues related to moisture and alkalinity in the substrate. Moisture and pH testing are not the responsibility of Mohawk Group.

III. OWNER OBLIGATIONS

1. Ownership is defined as the original purchaser of the floor; original proof of purchase may be required for a claim; this warranty is non-transferrable.
2. The original Owner must submit notice of all claims