



# CONNECTION

Premierfloor

Nylon Carpet Tile

Commercial | Hospitality | Residential







# The Geometry of Connection

Inspired by a modern interpretation of space and the natural environment, **Connection by Premierfloor** brings a fresh perspective to carpet tile design. This new collection blends abstract patterns and layered textures to reflect the fluid, dynamic nature of human interaction which is ever-shifting, yet deeply interconnected.

Each tile in the **Connection** collection acts as a modular building block which are designed to align seamlessly while maintaining a unique visual identity. The patterns evoke pathways, intersections, and city grids, echoing the complex networks of communities and relationships that shape our lives.

Available in eight distinct colourways, the collection features contrasting tones and patterns designed to enhance and energize any flooring space by adding depth, movement, and visual interest.

But **Connection** is more than just a surface but it's a flexible flooring solution. Easy to install, replace, and reconfigure, it evolves with the needs of your space. Whether in offices, learning environments, or hospitality settings, **Connection** supports a sense of cohesion while offering the adaptability modern interiors demand.

# Connection

## Technical Specifications

Collection Name	Connection
Yarn	100% Nylon 6
Construction	Multi Level Loop
Dye Method	Solution Dyed
Gauge	1/11 inch
Stitches Per Inch	12 per inch
Pile Height	3.5 mm (+/-0.5 mm)
Total Thickness	7.5 mm (+/-0.5 mm)
Pile Weight	21 oz/sy (714 gm/sm)
Total Weight	82oz/sy (2770 gm/sm +/-200 gm/sm)
Primary Backing	Non-woven
Secondary Backing	PVC FREE-ECOTEC® (80% post-consumer PET bottles)
Packing	18pcs (9sm/box)

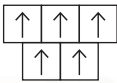
## Performance Specifications

Colorfastness	Grade 5 - No Change (AATCC 16)
Flammability	Class I (ASTM E648)
Smoke Density	Passed (ASTM E662)
Static Propensity	≤3.5 kV (AATCC-134)
Sound Absorption	ASTM C423 NRC 0.25 or Higher
SGBC	Leader ✓✓✓✓
Declare Label	Declare Certified
Warranty	10 years

## Installation Method



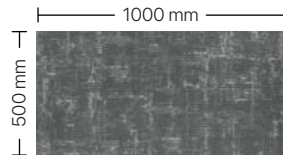
Herringbone



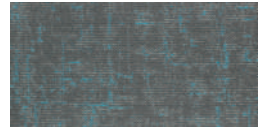
Brick



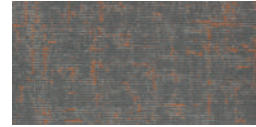
Ashlar



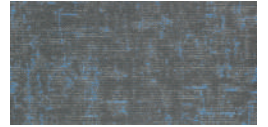
CNN01 Concrete



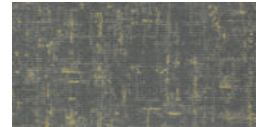
CNN05 Turquoise



CNN02 Terracotta



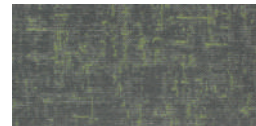
CNN06 Sapphire



CNN03 Pineapple



CNN07 Slate



CNN04 Fern



CNN08 Oat

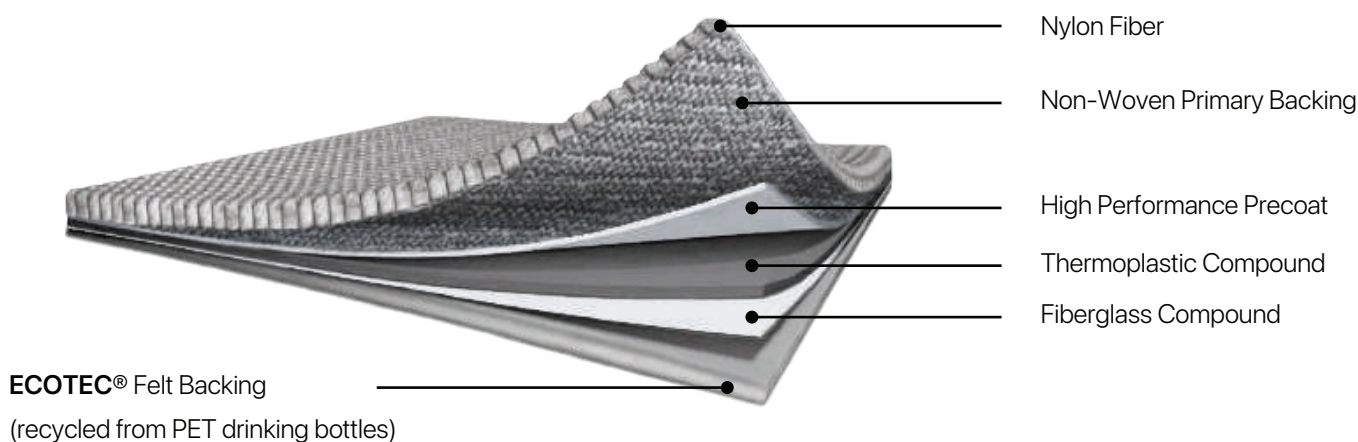




# ECOTEC®

## Carpet Tile Backing

ECOTEC® is a high-performance, cushion backing made primarily from recycled PET (plastic) bottles. It's engineered to improve the comfort, acoustic performance, and sustainability of carpet tiles.



## Advantages

### • Eco-Friendly & Sustainable

Manufactured with the environment in mind, this product is 100% recyclable, supporting sustainable building practices and reducing landfill waste.

### • Comfortable Cushioning Effect

The soft cushioned backing absorbs foot impact, reducing strain on joints and muscles while improving overall walking comfort — ideal for high-traffic or standing areas.

### • Enhanced Carpet Durability

The cushioning layer helps prolong carpet life by reducing wear and tear, especially in commercial and busy spaces.

### • Superior Sound Absorption

Excellent acoustic performance helps minimize footstep and ambient noise, contributing to a quieter, more comfortable indoor environment.

### • Improved Indoor Air Quality

Made from clean, low-emission materials that support healthier interiors, making it ideal for offices, hospitality, and wellness-focused spaces.

### • Outstanding Dimensional Stability

Engineered to stay flat and maintain its form, ensuring a professional and seamless installation without curling or shifting.

### • Free from Harmful Materials

Contains no PVC, plasticizers, or bitumen — reducing environmental and health impacts often associated with traditional backing systems.



#### Note:

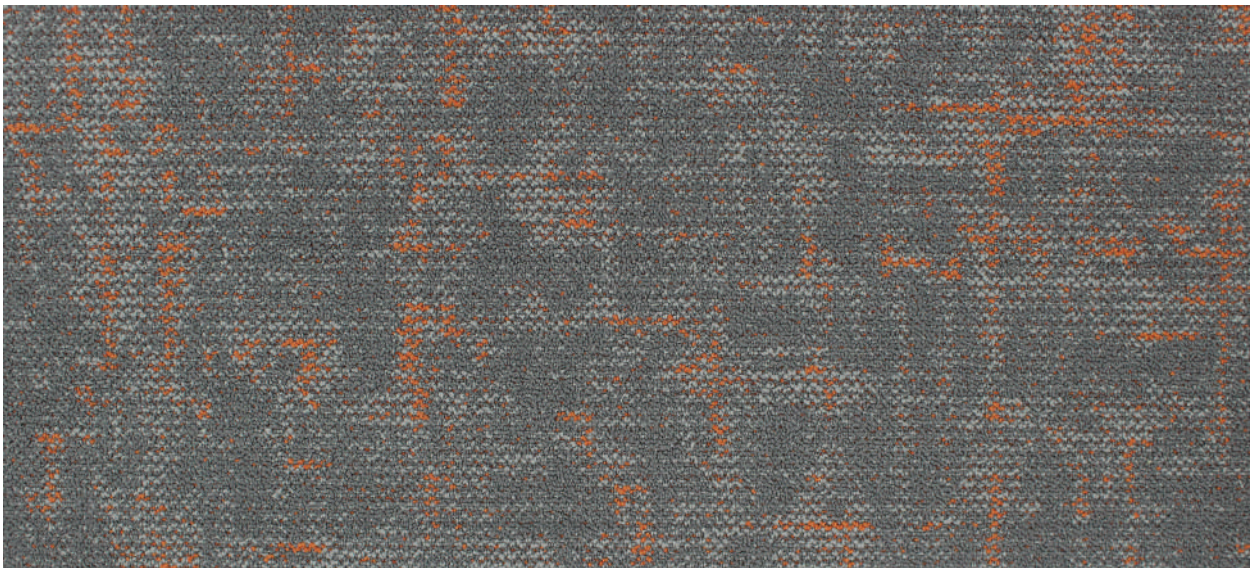
- Product specifications are based on standard manufacturing tolerances. Slight variations may occur but will not impact performance.
- As with all quality carpets, minor color differences may appear between dye lots.
- To maintain appearance and minimize wear, the use of protective chair pads is recommended under office chairs with castor wheels.



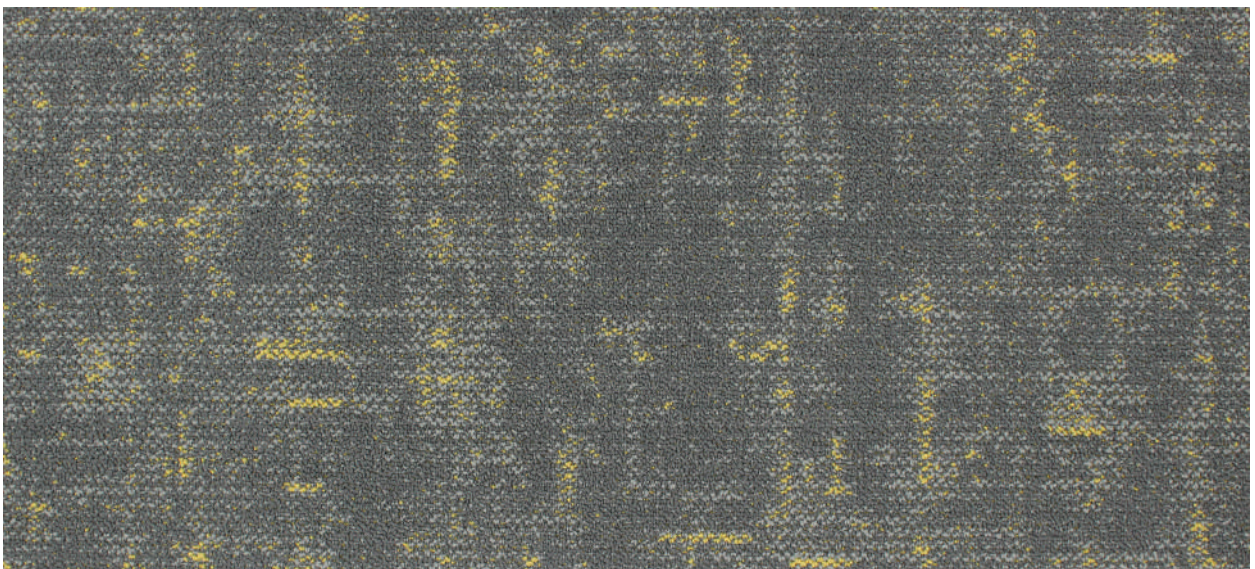
**Size** 500 x 1000 mm



**CNN01** Concrete



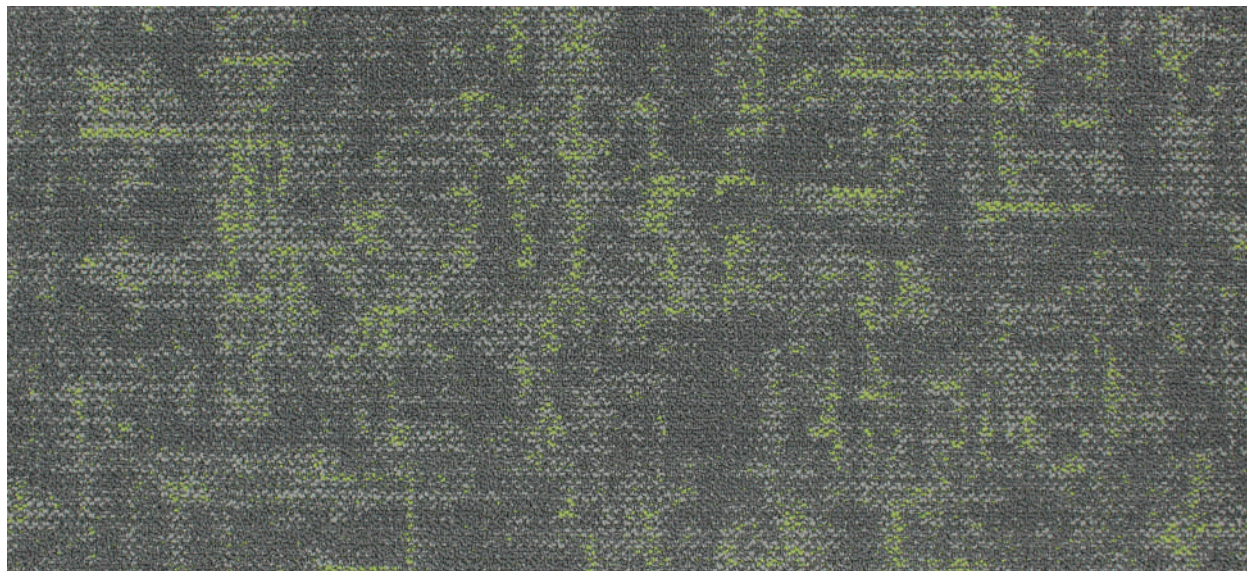
**CNN02** Terracotta



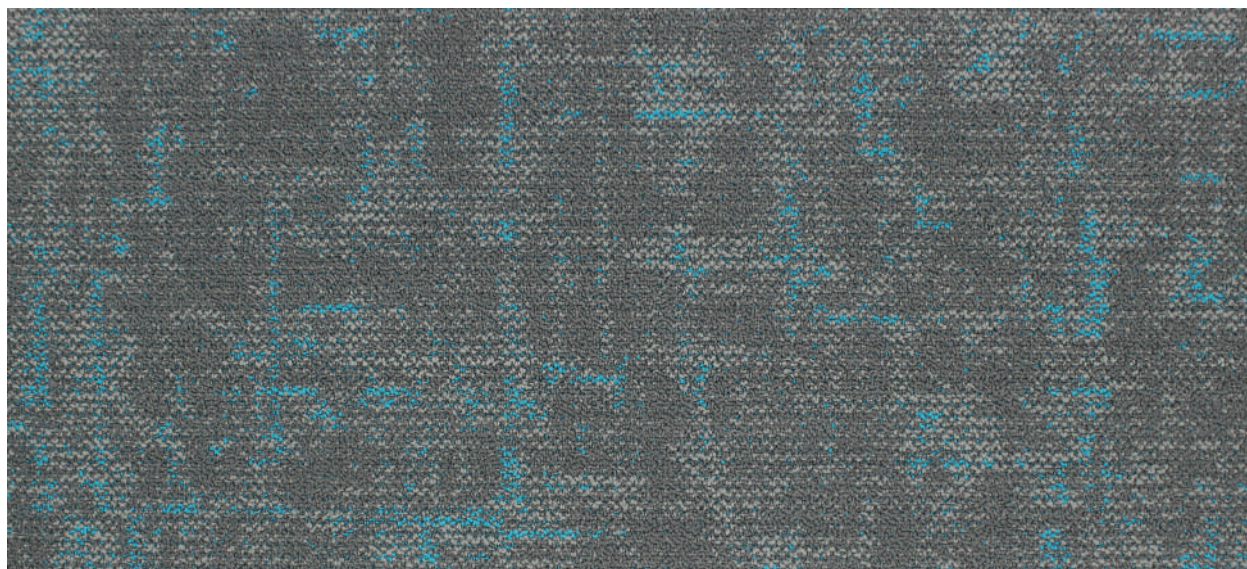
**CNN03** Pineapple



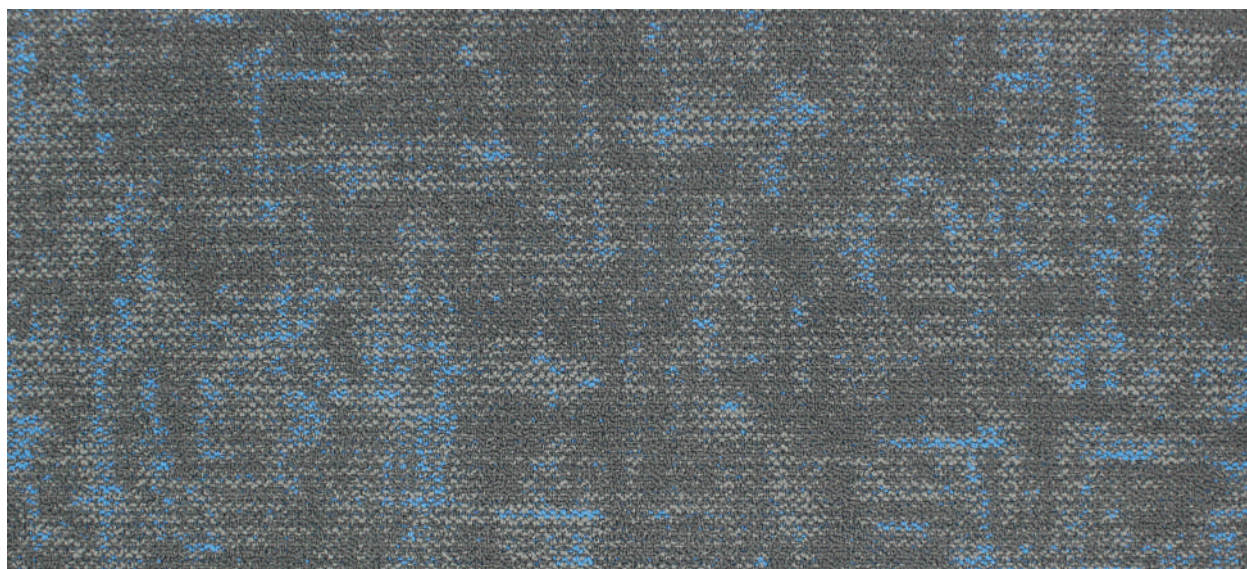
**Size** 500 x 1000 mm



**CNN04** Fern



**CNN05** Turquoise

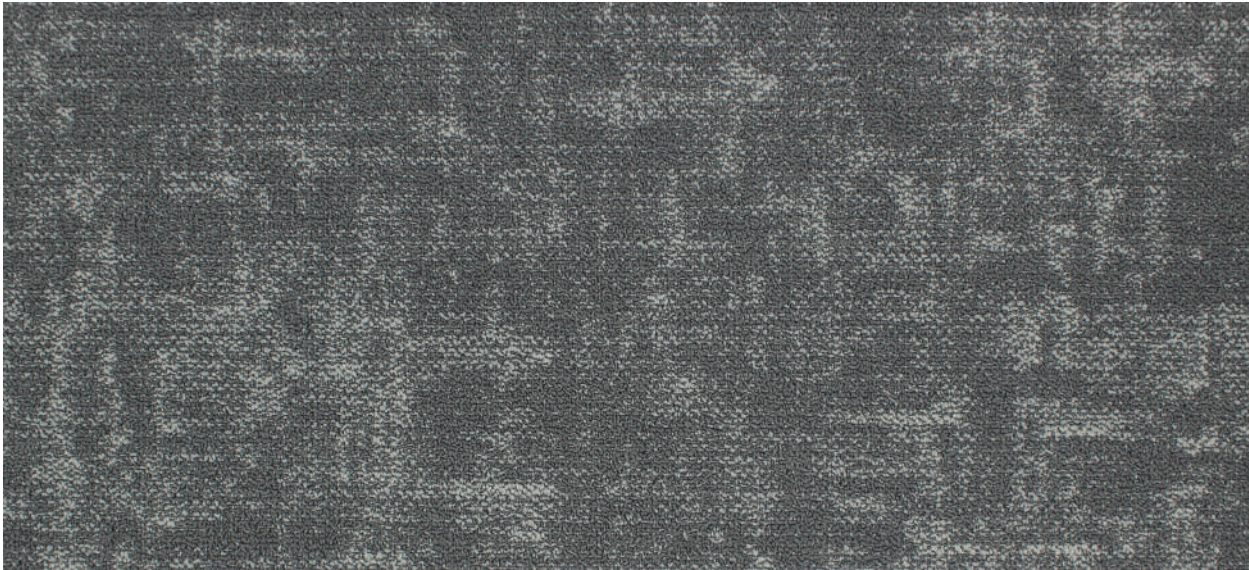


**CNN06** Sapphire



# Stocking

Size 500 x 1000 mm



CNN07 Slate



CNN08 Oat







CNN01 Concrete (60%) + CNN06 Sapphire (40%) | Random Brick Installation

\* Images and renderings in this sample book are for illustration purpose and may not represent the real colour.





CNN02 Terracotta | Random Brick Installation

\* Images and renderings in this sample book are for illustration purpose and may not represent the real colour





CNN03 Pineapple | Random Brick Installation

\* Images and renderings in this sample book are for illustration purpose and may not represent the real colour.





CNN04 Fern | Random Brick Installation

\* Images and renderings in this sample book are for illustration purpose and may not represent the real colour.





CNN06 Sapphire | Random Brick Installation

Images and renderings in this sample book are for illustration purpose and may not represent the real colour.





CNN07 Slate | Random Brick Installation

\* Images and renderings in this sample book are for illustration purpose and may not represent the real colour.











**Stay Connected** - [www.goodrichglobal.com](http://www.goodrichglobal.com) | [info@goodrichglobal.com](mailto:info@goodrichglobal.com)



Singapore (HQ) | Malaysia | Thailand | Vietnam | India | Indonesia | United Arab Emirates | Philippines | China | Hongkong (China)