

GOODRICH SORONA CARPET TILE

2025





Sorona® is made from 37% annually renewable plant-based polymer. It also uses 30%-40% less energy to produce and releases 56%-63% fewer greenhouse gas emissions as compared to the production of nylon.



Carpet Fiber Performance Comparison	SORONA®	NYLON 6,6	NYLON 6
Durability	★★★★★	★★★★★	★★★★★
Stain Resistance	★★★★★	★	★
Bleach Resistance	★★★★★	★	★
Soiling	★★★★★	★★★★★	★★
Static	★★★★★	★	★
Drying Time	★★★★★	★	★

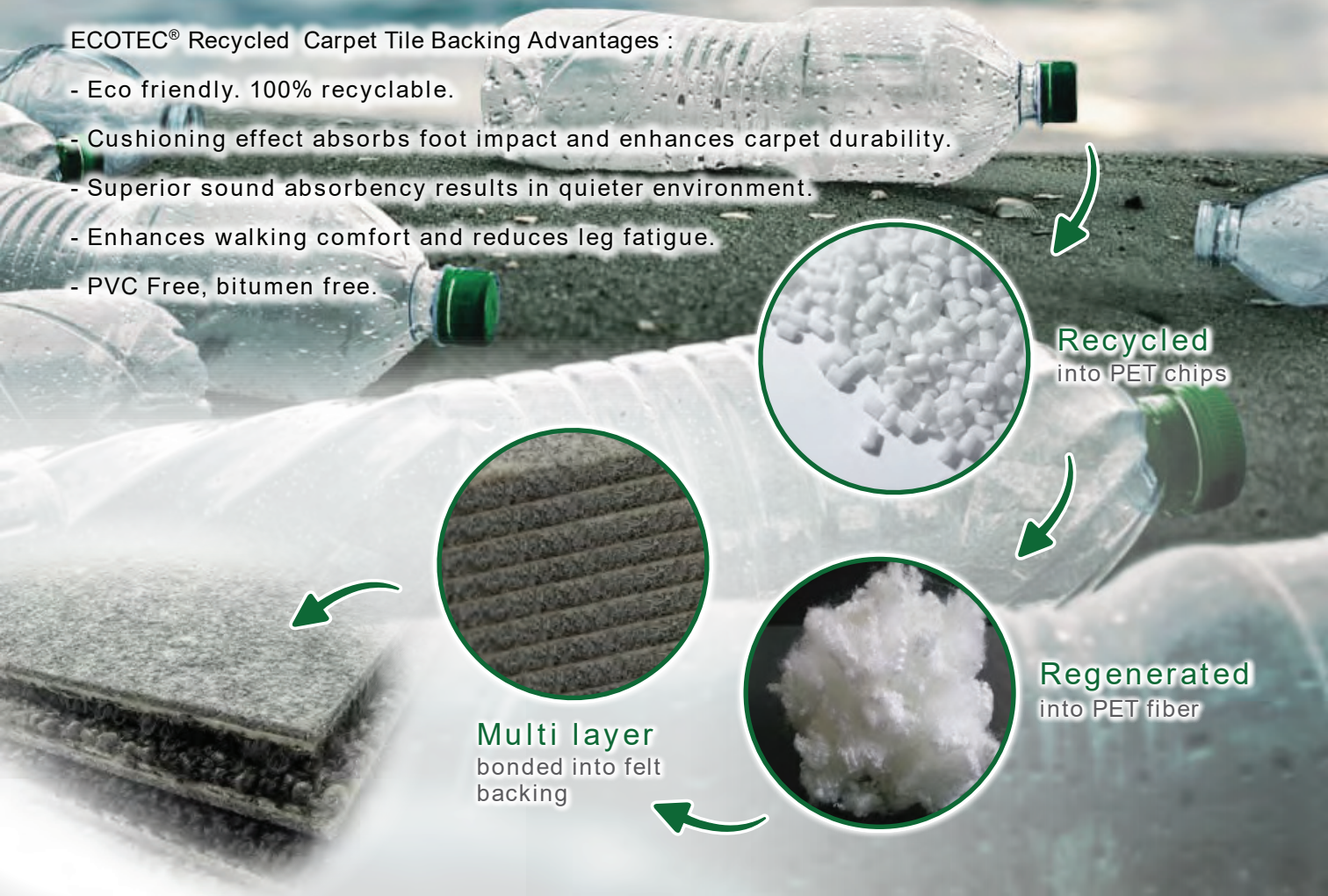
ECOTEC® (Recycled PET Cushion Backing)

Do our part to **remove plastics** from the
ocean and landfills !

10 MILLION metric tons of **plastic** enters the
ocean and landfills **each year**

ECOTEC® Recycled Carpet Tile Backing Advantages :

- Eco friendly. 100% recyclable.
- Cushioning effect absorbs foot impact and enhances carpet durability.
- Superior sound absorbency results in quieter environment.
- Enhances walking comfort and reduces leg fatigue.
- PVC Free, bitumen free.



The background is a complex, abstract composition of numerous overlapping squares. Each square has a distinct, colorful, and heavily textured appearance, resembling a coarse fabric or a digital noise pattern. The colors include shades of red, orange, yellow, green, blue, purple, and brown. The squares are arranged in a non-uniform, staggered manner, creating a sense of depth and movement. In the center of the image, the word "EXPRESSION" is written in a large, bold, white, sans-serif font. The text is slightly shadowed, giving it a three-dimensional feel as if it's floating above or attached to the background.

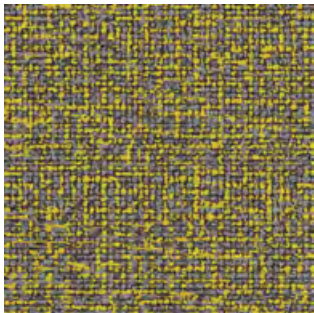
EXPRESSION



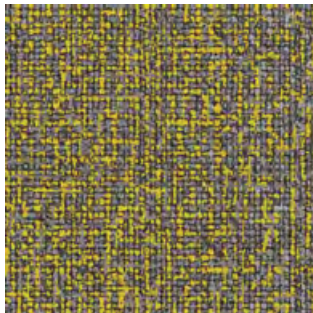




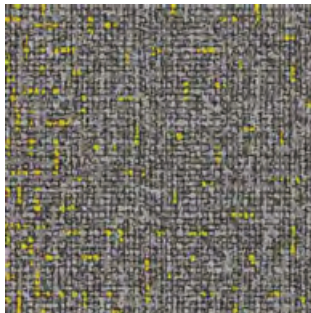




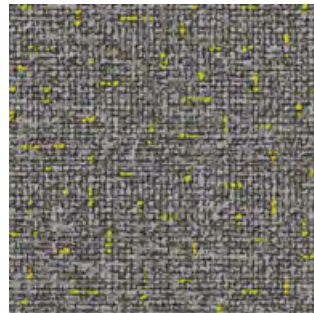
Coin+Lemon
05814+07



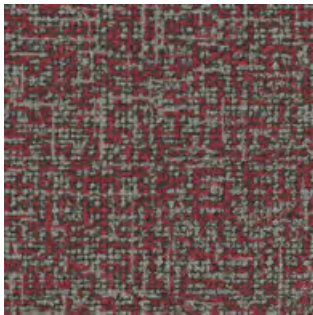
Coin+Lemon
05814A+07



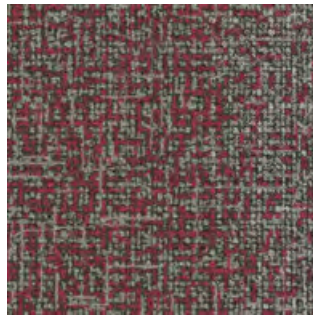
Coin+Lemon
05814C+07



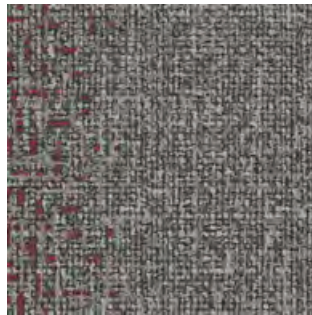
Coin+Lemon
05814D+07



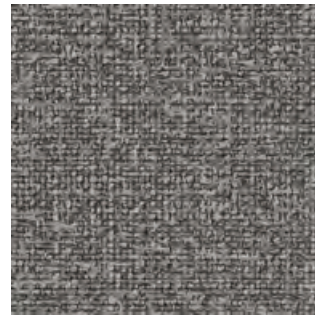
Coin+Cherry Red
05814+28



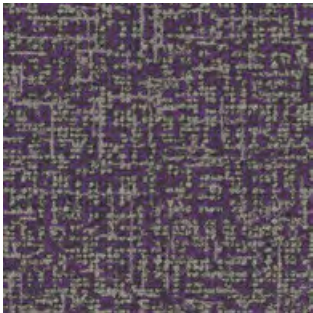
Coin+Cherry Red
05814A+28



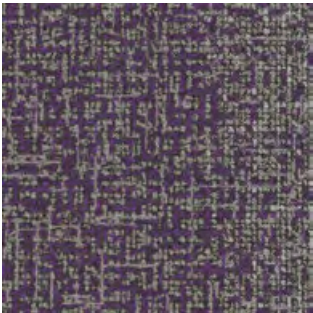
Coin+Cherry Red
05814B+28



Coin 05814



Coin+Warm Purple
05814+09



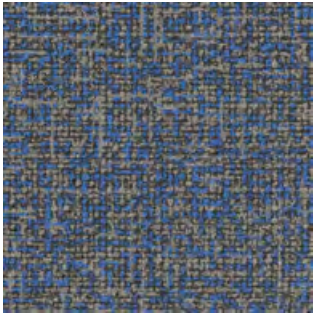
Coin+Warm Purple
05814A+09



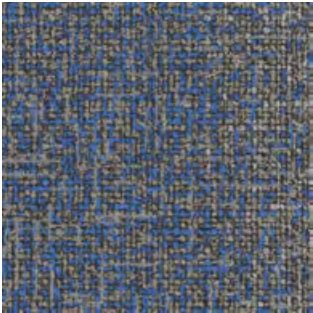
Coin+Warm Purple
05814B+09



Coin 05814



Coin+Pacific
05814+22



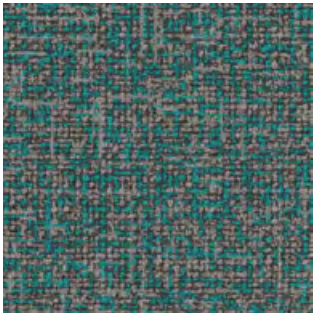
Coin+Pacific
05814A+22



Coin+Pacific
05814B+22



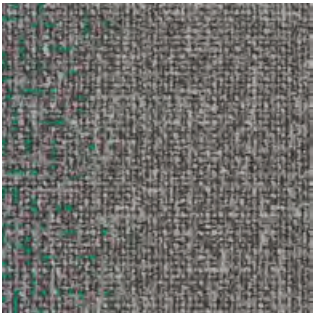
Coin 05814



Coin+Turquoise
05814+02



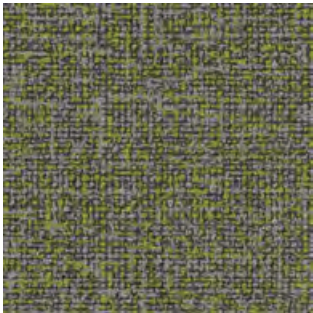
Coin+Turquoise
05814A+02



Coin+Turquoise
05814B+02



Coin 05814



Coin+Moss
05814+14



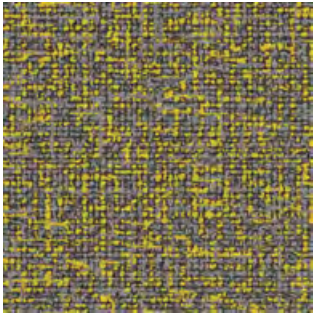
Coin+Moss
05814A+14



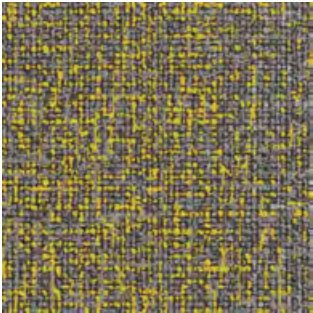
Coin+Moss
05814B+14



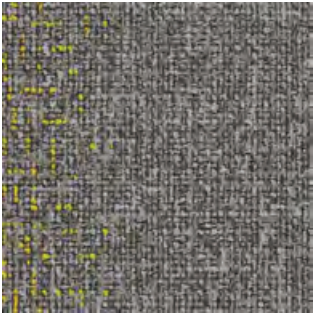
Coin 05814



Coin+Lemon
05814+07



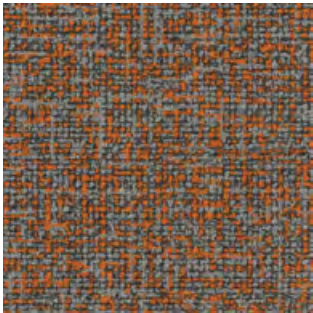
Coin+Lemon
05814A+07



Coin+Lemon
05814B+07



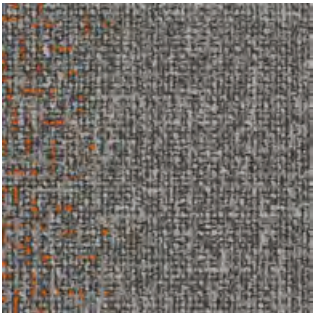
Coin 05814



Coin+Sunset
05814+10



Coin+Sunset
05814A+10



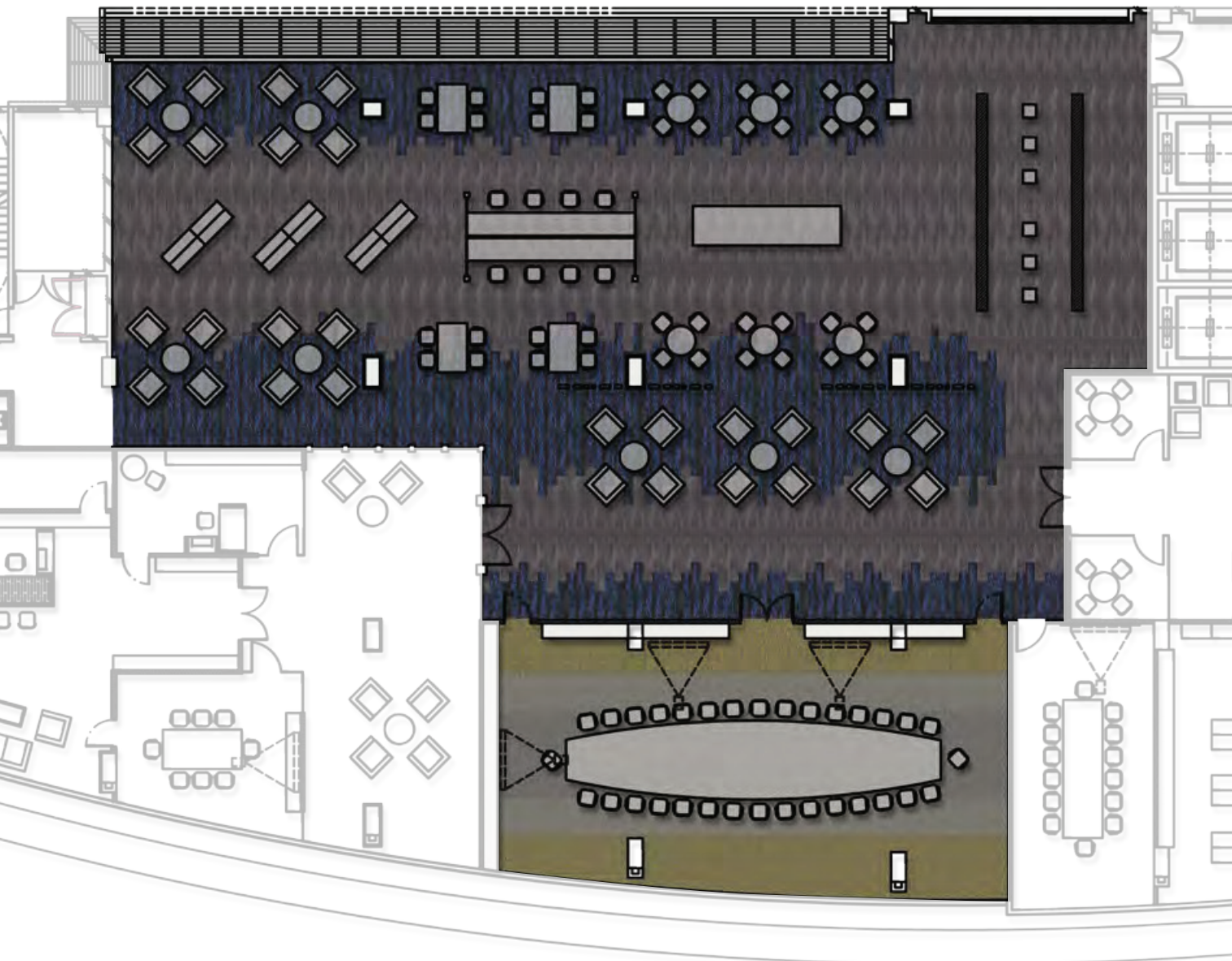
Coin+Sunset
05814B+10

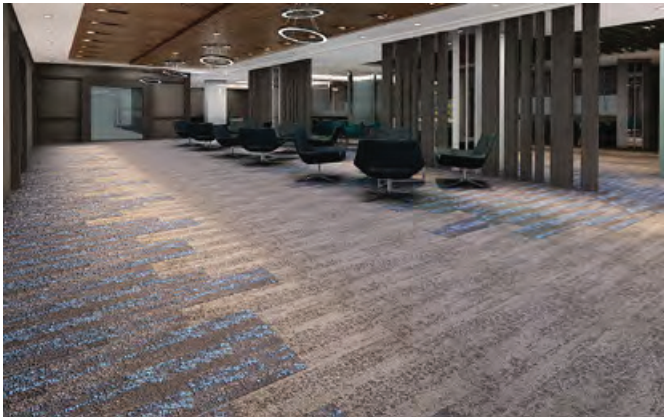


Coin 05814

STONEWALL

Modern designers often believe that everything old, is new again. The Stonewall series carpet tile range was developed to embrace the aging process of natural stone. The hard surfaces often associate with a minimalistic design.





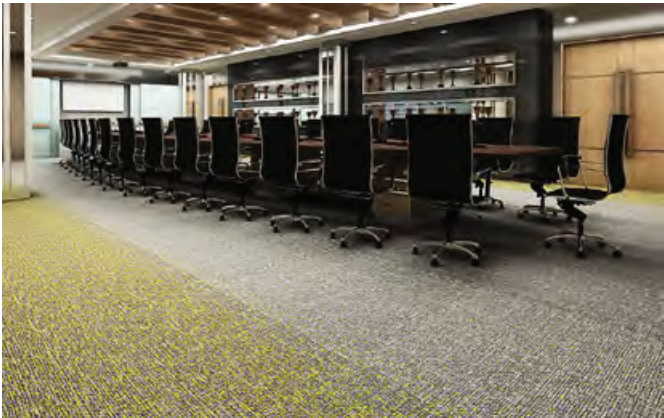
STONEWALL - SN200502, SN200508+Sapphire



EXPRESSION - Coin+Lemon 05814AB+07



STONEWALL - SN200502, SN200508+Sapphire



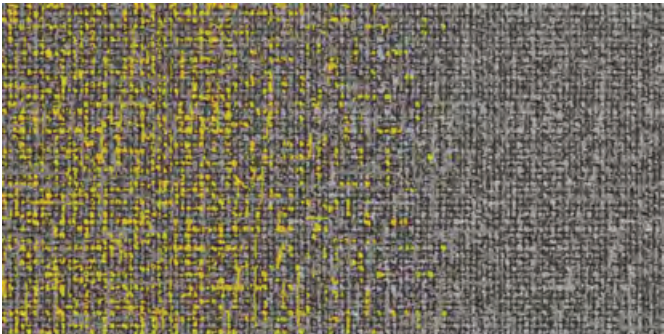
EXPRESSION - Coin+Lemon 05814AB+07



STONEWALL - SN200502



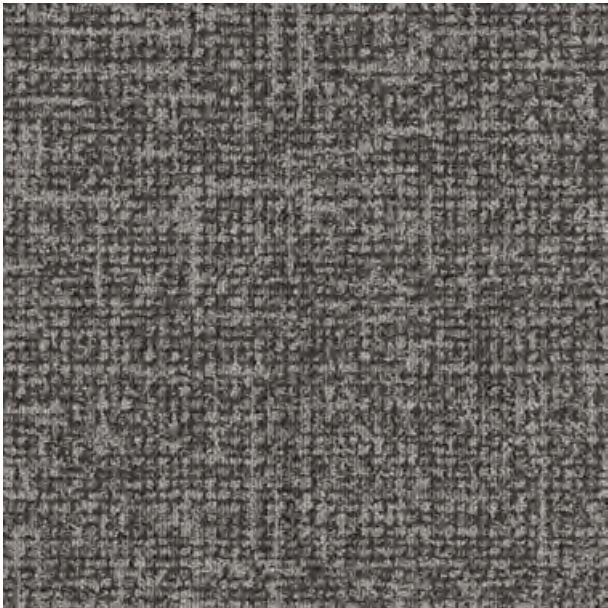
STONEWALL - SN200508+Sapphire



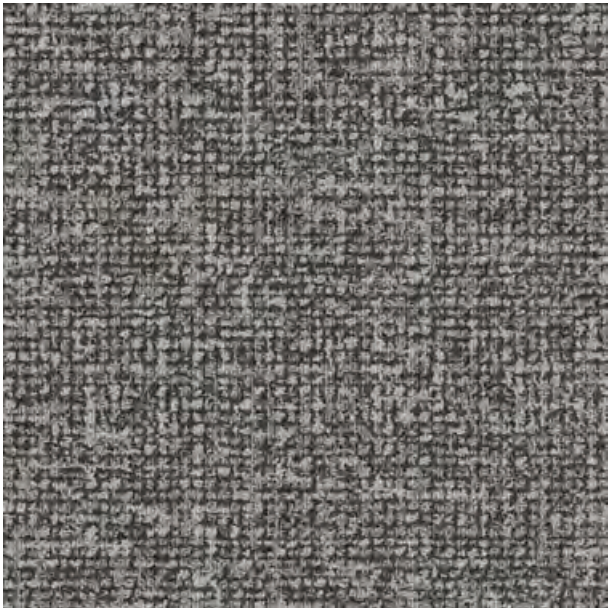
EXPRESSION - Coin+Lemon 05814AB+07



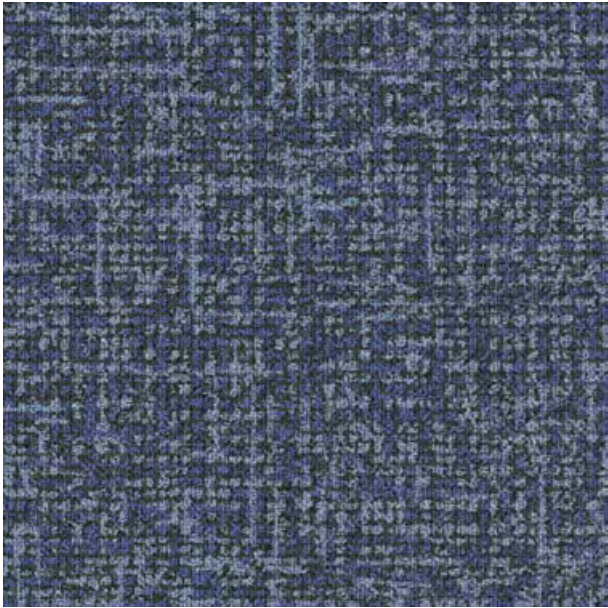
Expression - Coin 05814



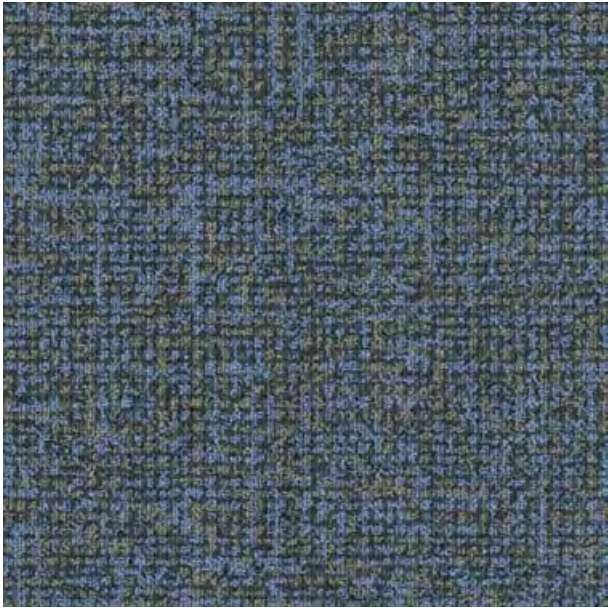
Armour 05816



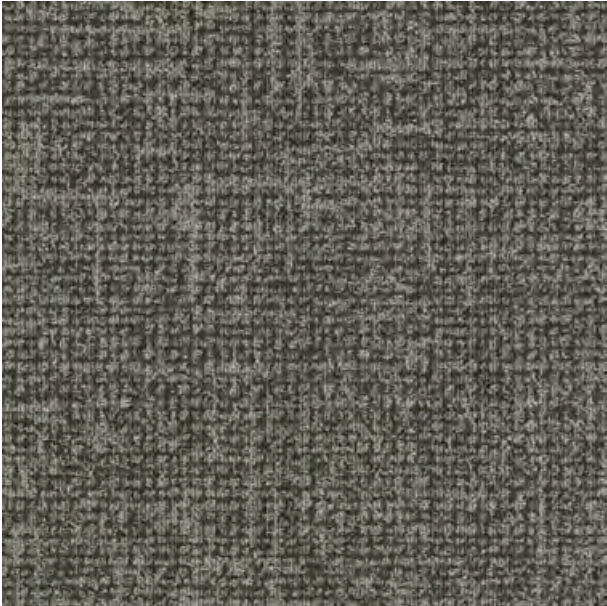
Coin 05814



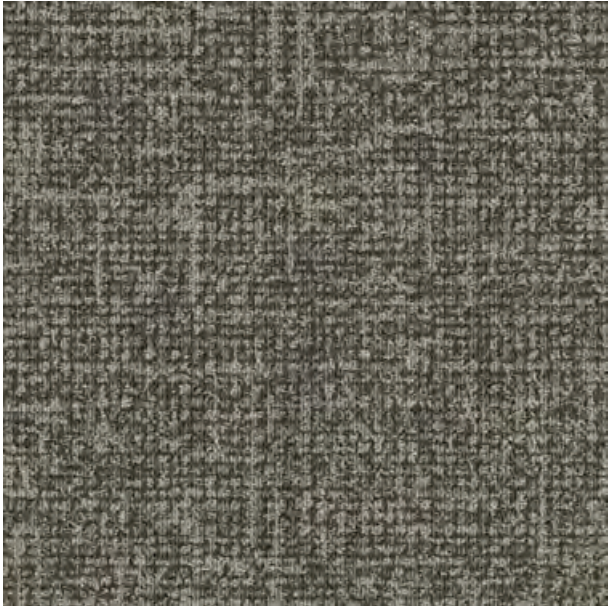
Azure 05803 25



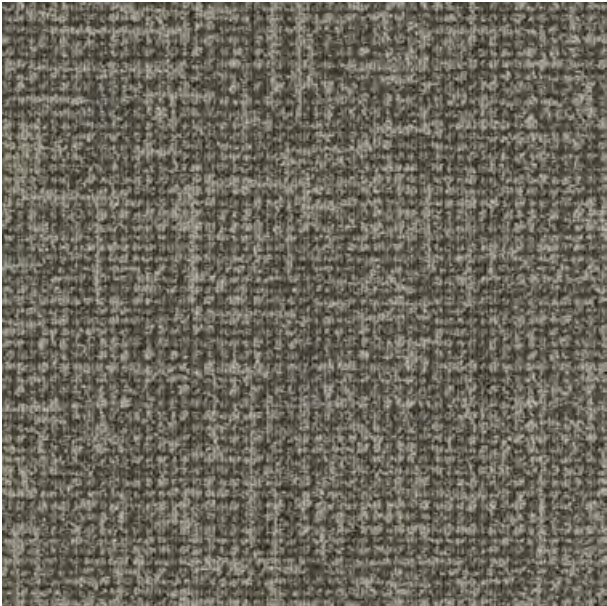
Blue Marlin 05802 25



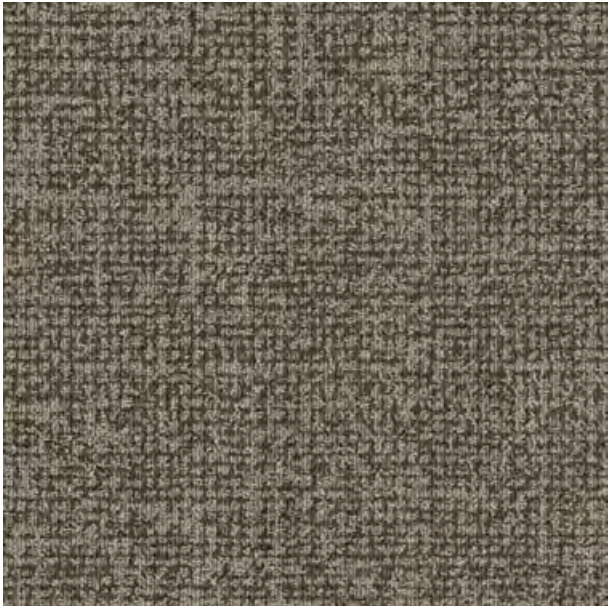
Fossil 05801



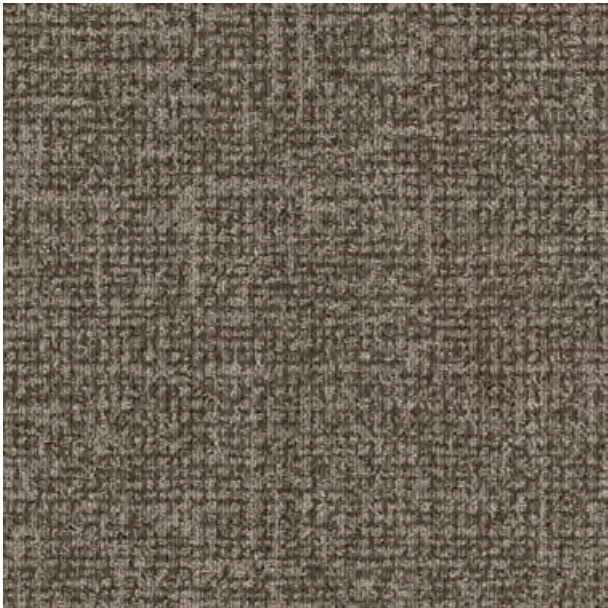
Rhino 05812



Gravel 05805



Forest 05810 24



Tobacco 05804



Greenfield 05813 24



Truffle 05811



Champagne 05806

Product specifications :

Construction	Textured tufted loop pile
Face Fiber	100% Sorona® Fiber
Dyed Method	Dye Infusion
Total Thickness	9 mm
Total Density	165,000 /m²
Primary Backing	100 % non woven synthetic
Tile Size	60 cm x 60 cm
Wear Classification	Extra Heavy Duty



Goodrich Global
SINCE 1983

Advantages :



Lifetime Stain Resistant

Permanent lifetime stain resistant is built into the core of the fiber. Just clean stubborn stains such as coffee or wine with cold water, reducing cost and time.



Exceptional Durability

Exceptional durability. Sorona biopolymer molecular spring like structure, coupled with Ecotec cushion backing, allowing the fiber to bounce back into original shape after being compressed.



Anti-Microbial

Sorona dries faster and absorbs 16 times less moisture than nylon. Resulting in excellent anti-microbial, anti-mold and fungi properties where the environment for bacteria to breed is exceptionally reduced.



Ecotec Cushion Backing

Ecotec cushion felt backing recycled from PET bottles offers superior walking comfort, and extends the life of the carpet by absorbing foot impact.



Sound Absorbency

Ecotec cushion felt backing offers excellent sound absorbency, creating a better working and living environment.

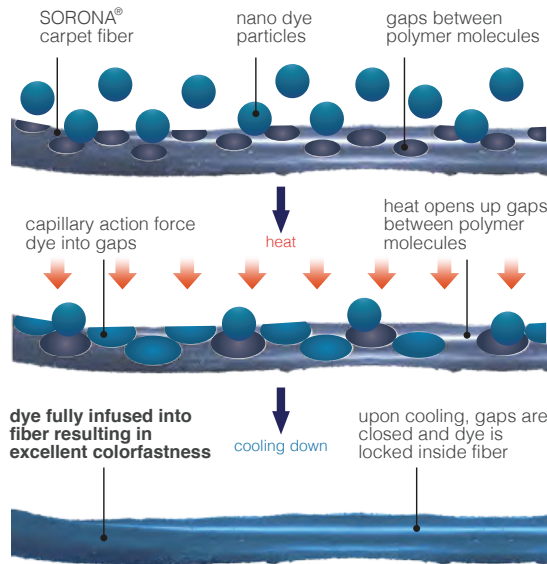
Specifications are based on average normal manufacturing tolerances, variations do not affect product performance.

As with all quality carpets , slight variations in color may occur from dye lot to dye lot.

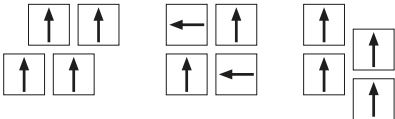
Protective chair pads are recommended under office chairs with roller castors to preserve appearance retention and to avoid excessive wear.

For end of life disposal, please refer to your country's disposal regulation.

Dye Infusion



Installation Methods :



Declare.

GRAVEL

GRAVEL



Gravel Mix - Silver+Sandy Grey 700144+700150, Sandy Grey+Beige 700150+700147



Silver+Sandy Grey
700144+700150 - A



Silver+Sandy Grey
700144+700150 - B

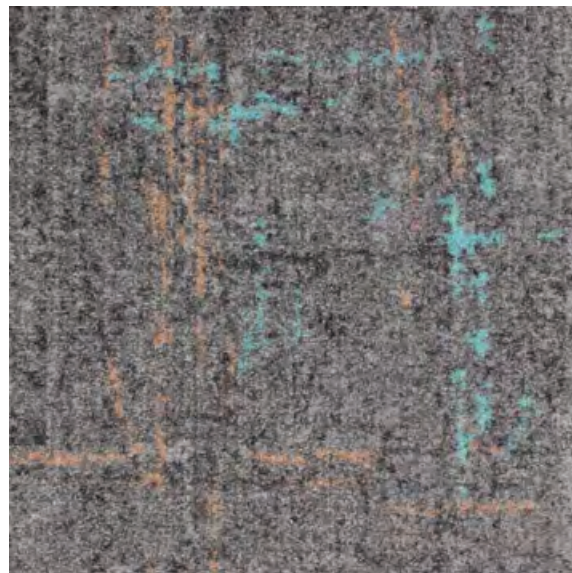


Sandy Grey+Beige
700150+700147 - B

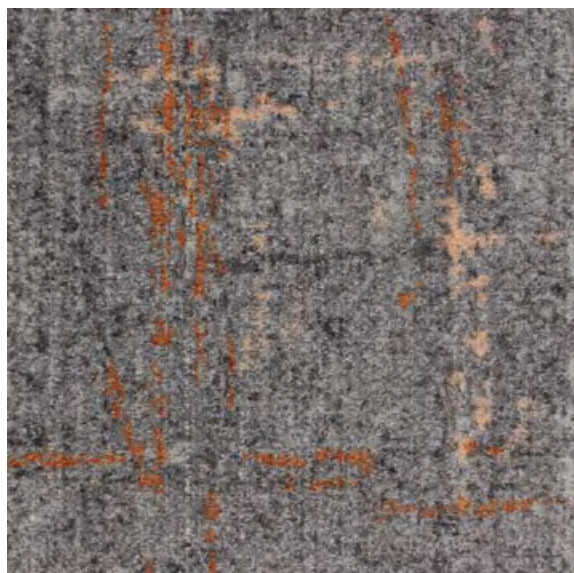


Sandy Grey+Beige
700150+700147 - A

● Gravel - Silver 700144

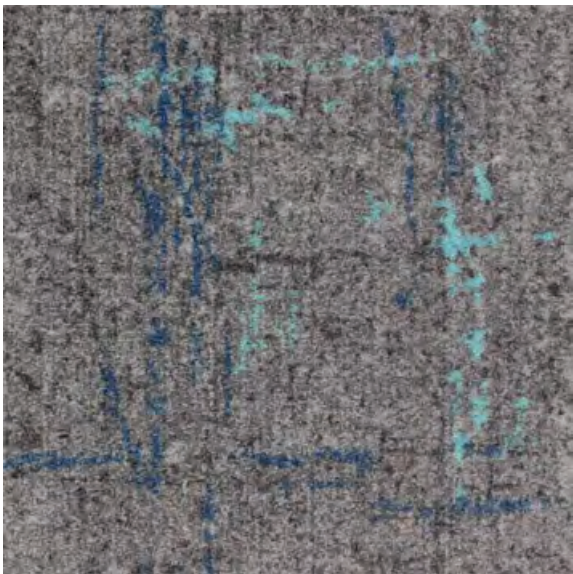


Natural+Sky Blue, Peach
R700141+34, 33

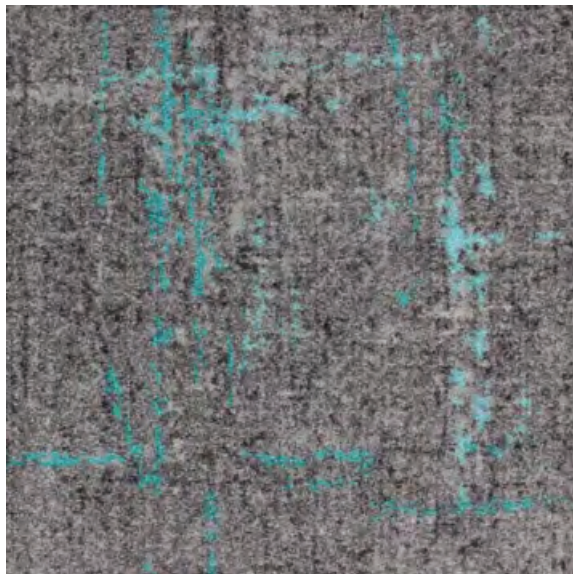


Natural+Rust, Peach
R700141+01, 33

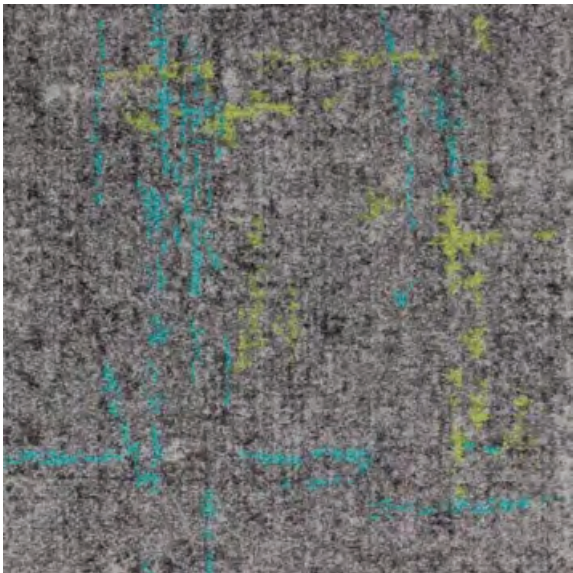




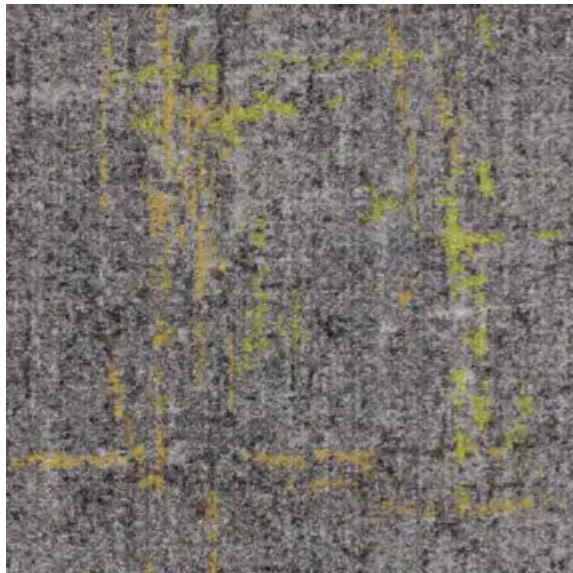
Natural+Atlantic, Sky Blue
R700141+25, 34



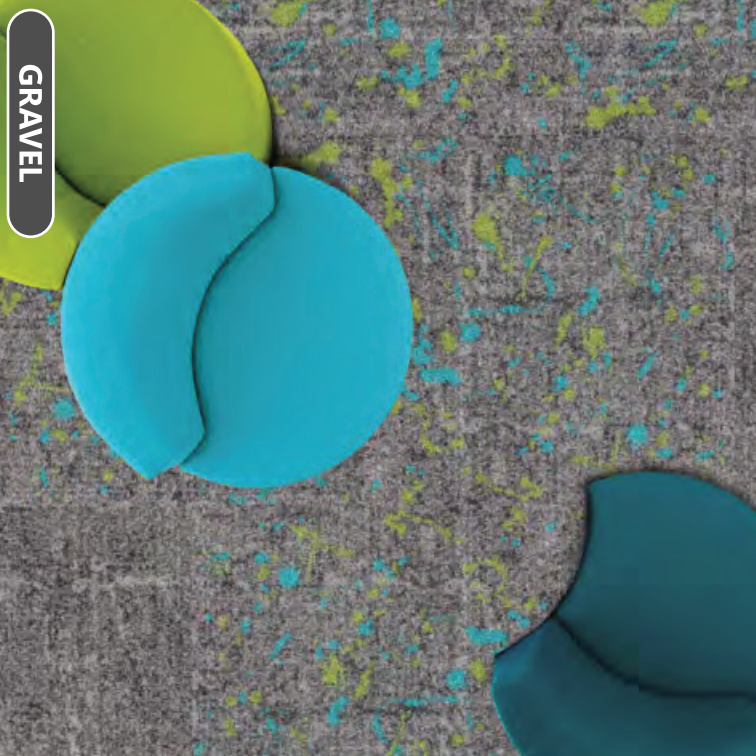
Natural+Turquoise, Sky Blue
R700141+02, 34



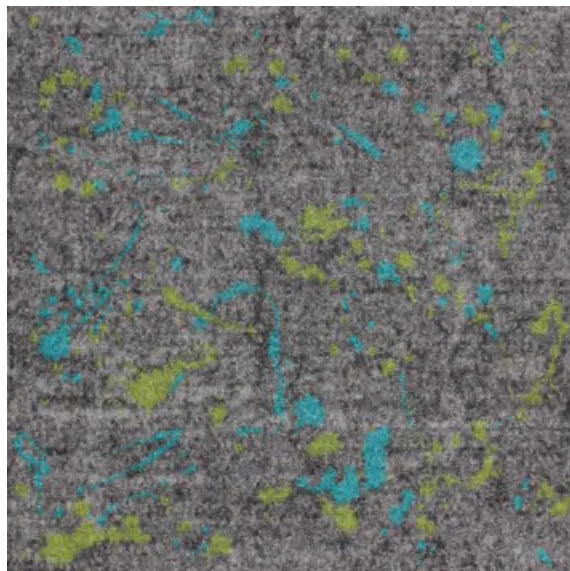
Natural+Turquoise, Moss
R700141+02, 14



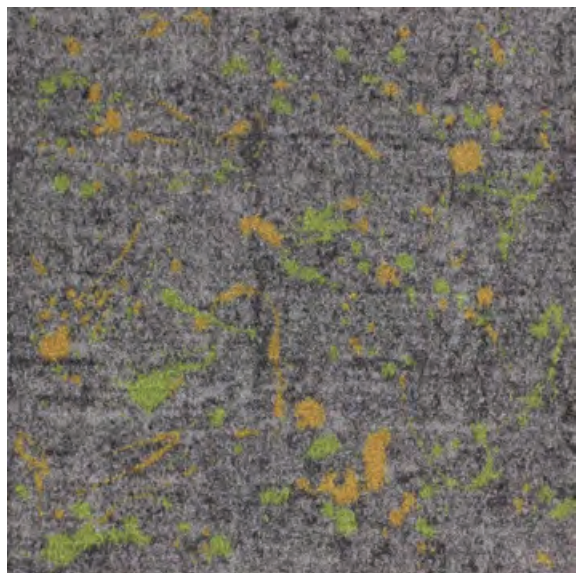
Natural+Meadow, Mustard
R700141+24, 06



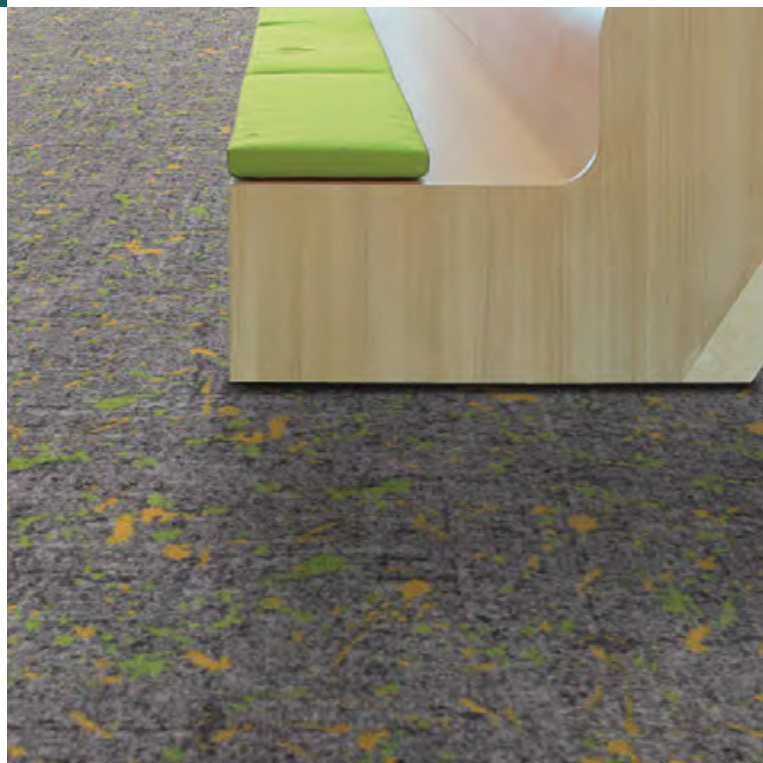
GRAVEL

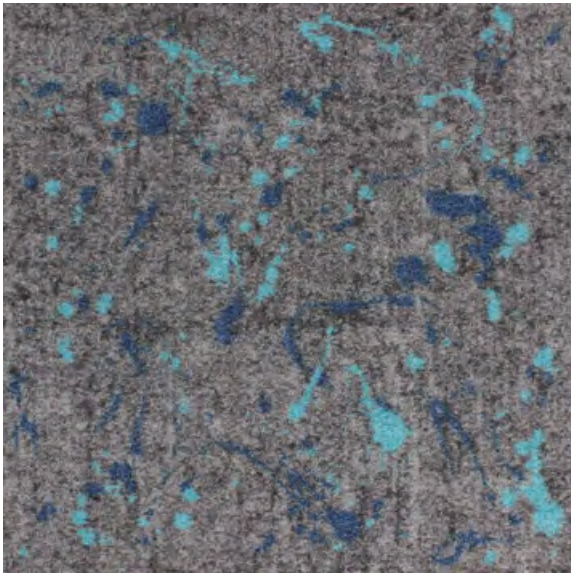


Natural+Turquoise, Moss
S700141+02, 14

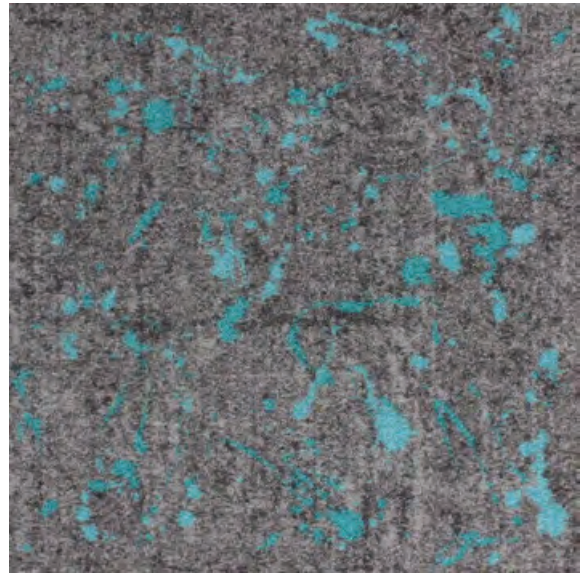


Natural+Moss, Mustard
S700141+14, 06

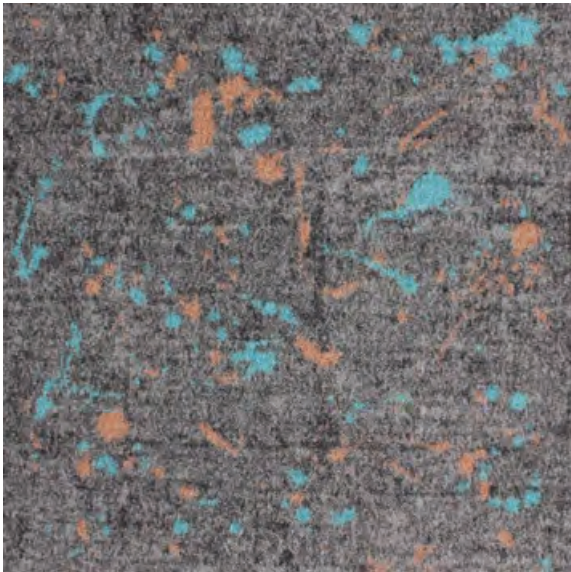




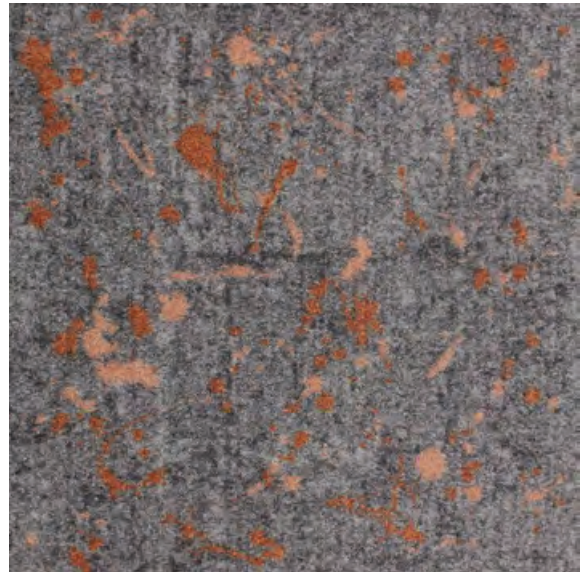
Natural+Atlantic, Sky Blue
S700141+25, 34



Natural+Turquoise, Sky Blue
S700141+02, 34

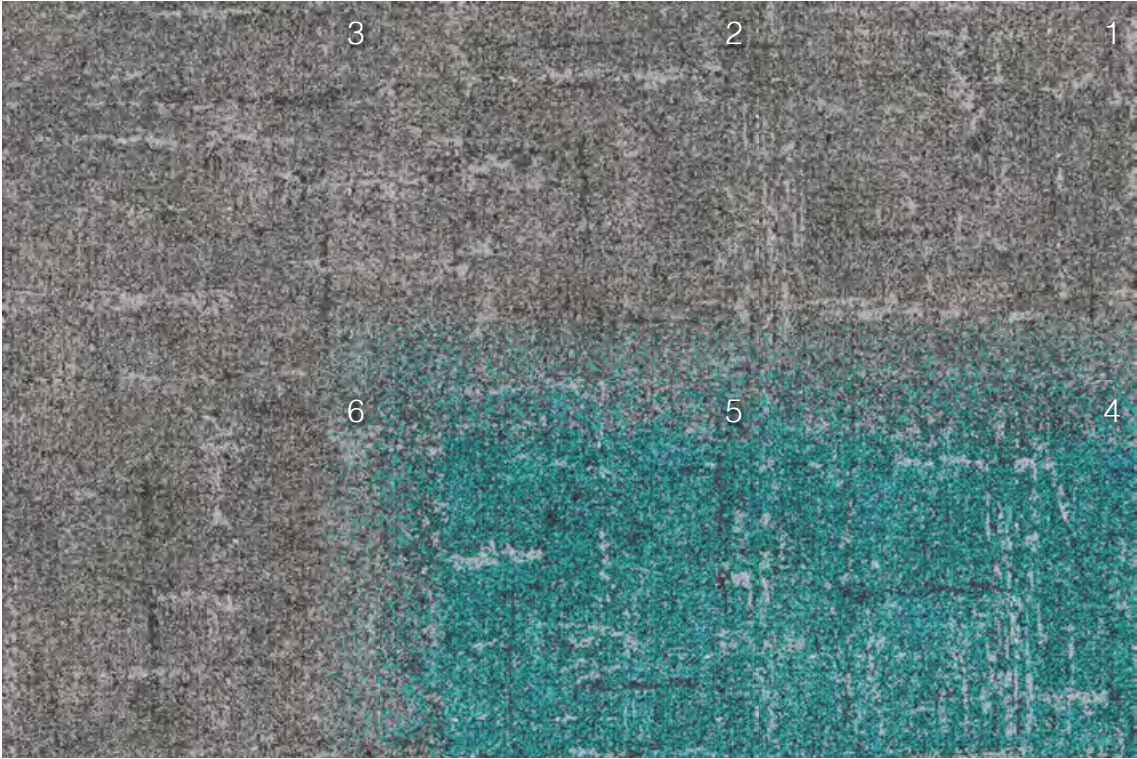


Natural+Sky Blue, Peach
S700141+34, 33



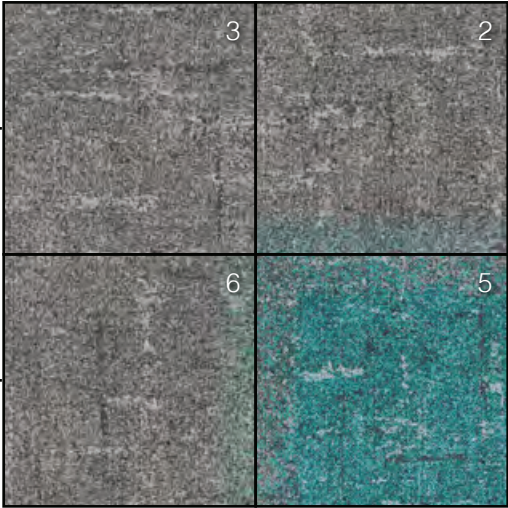
Natural+Rust, Peach
S700141+01, 33

GRAVEL



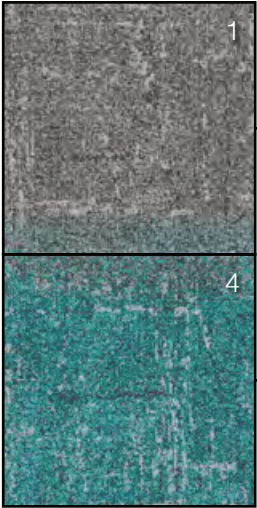
Natural+Gem
(Mix Corner)

Tile number
2, 3, 5, 6



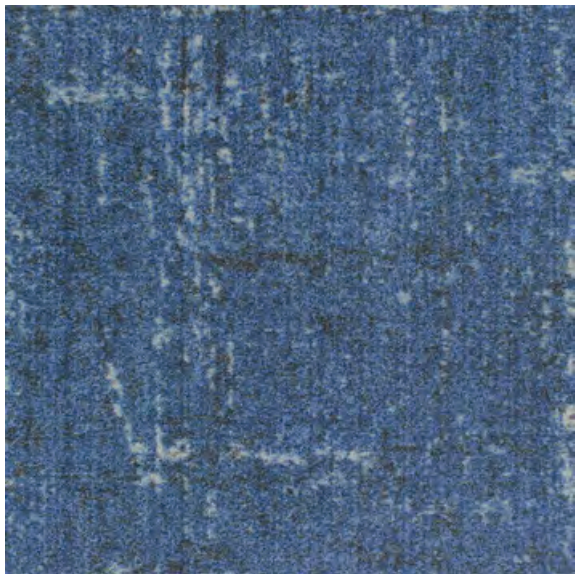
Natural+Gem
(Mix)

Tile number
1, 4

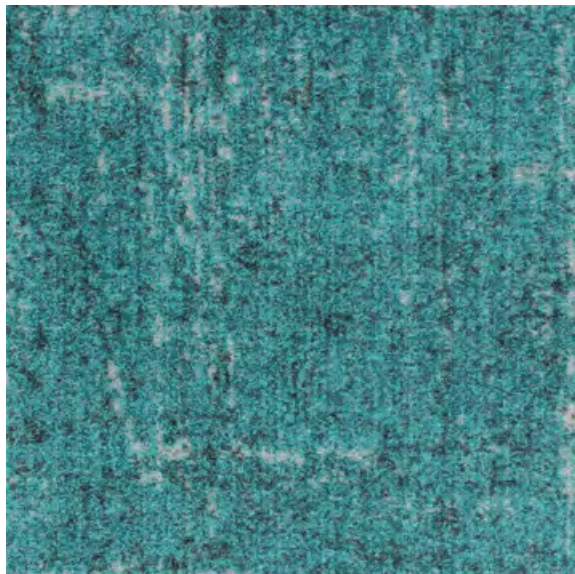


Gravel Mix In a slab

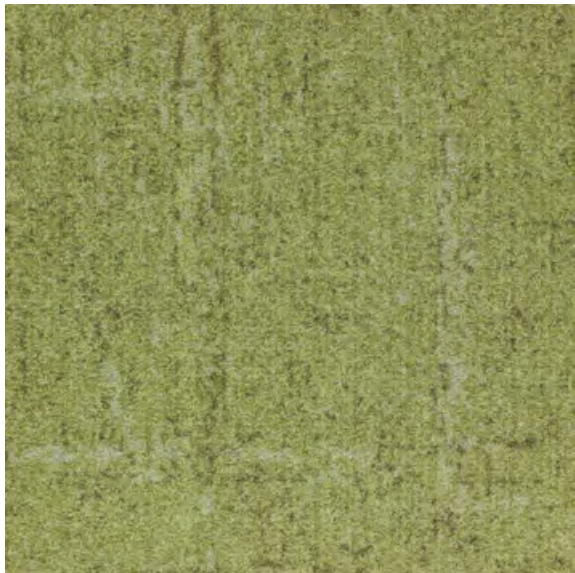




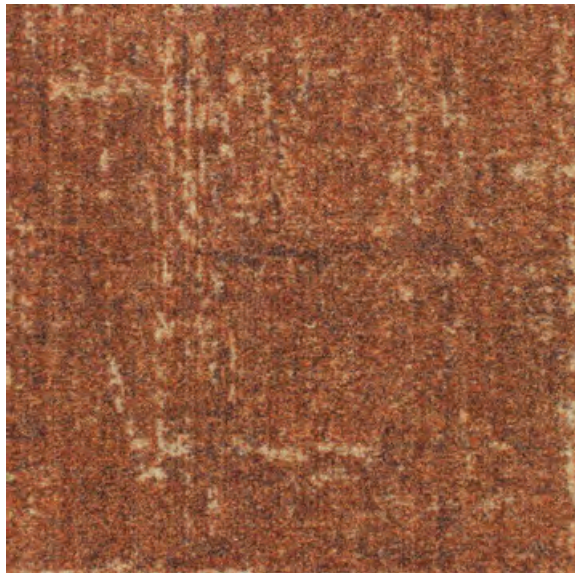
Ocean 700153



Gem 700152

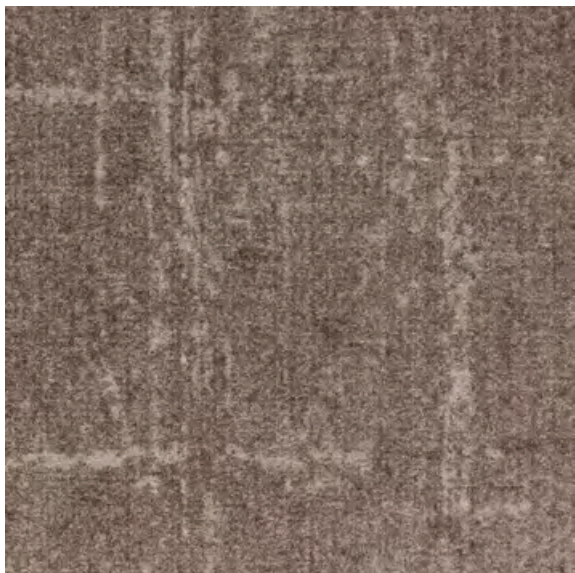


Pine 700149



Orange Squash 700151





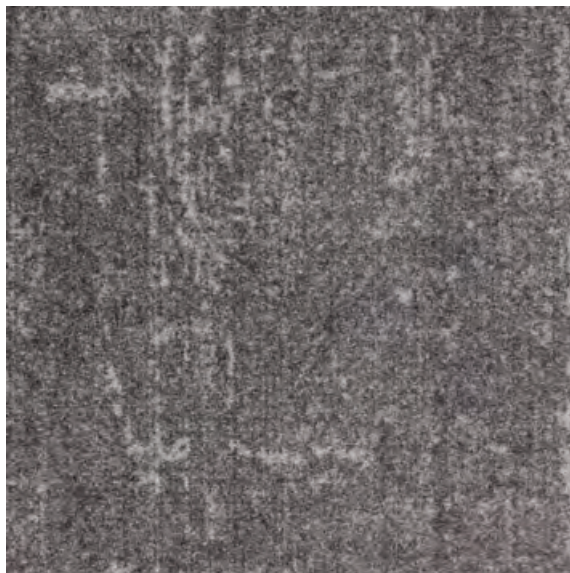
Root 700148



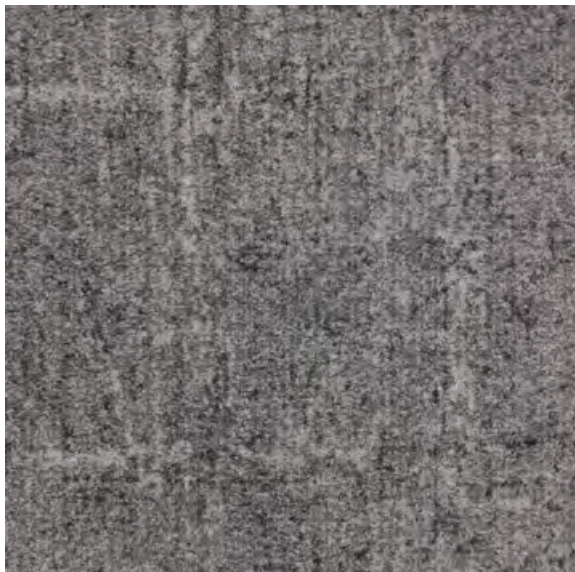
Beige 700147



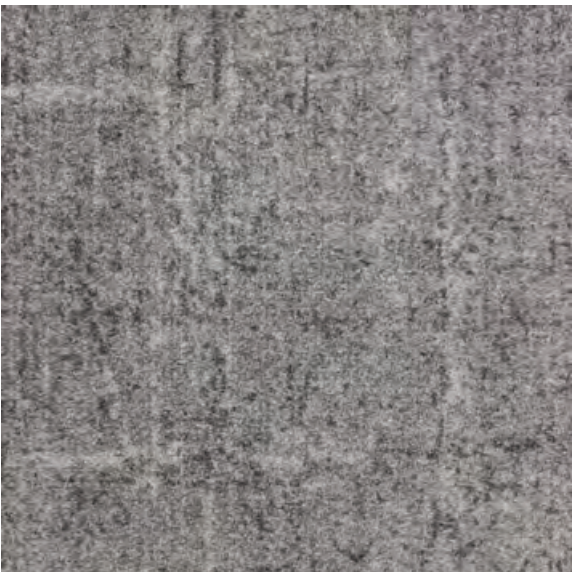
Sandy Grey 700150



Grey 700145



Natural 700141



Silver 700144

Product specifications :

Construction

Face Fiber

Textured tufted loop pile

Now available in both fibers :

- 100% **Sorona®** Fiber

or

- 100% **ReVi** (HD PBT - High density polybutylene terephthalate)

Dyed Method

Dye Infusion

Total Thickness

8.5 mm

Total Density

200,000 /m²

Backing

ECOTEC® (recycled PET cushion backing)

Tile Size

60 cm x 60 cm

Wear Classification

Hexapod ≥ 3.5 Heavy commercial

Flammability

≥ 0.45 (Class I)

Electrostatic Propensity

AATCC 134 ≤ 3kv

Colorfastness To Light

AATCC 16E ≥ 4

Noise Reduction Coefficient

ASTM C423-22 NRC 0.25 or higher

Indoor Air Quality

Singapore Green Building Council

Advantages :



Lifetime Stain Resistant

Permanent lifetime stain resistant is built into the core of the fiber. Just clean stubborn stains such as coffee with cold water, reducing cost and time.



Exceptional Durability

Exceptional durability. Sorona and ReVi biopolymer molecular spring like structure, coupled with Ecotec cushion backing, allowing the fiber to bounce back into original shape after being compressed.



Anti-Microbial

Sorona and ReVi dries faster and absorbs 16 times less moisture than nylon. Resulting in excellent anti-microbial, anti-mold and fungi properties where the environment for bacteria to breed is exceptionally reduced.



Ecotec Cushion Backing

Ecotec cushion felt backing recycled from PET bottles offers superior walking comfort, and extends the life of the carpet by absorbing foot impact.

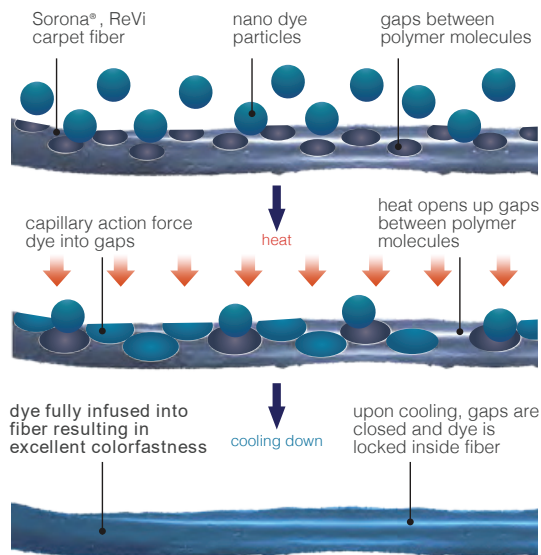


Sound Absorbency

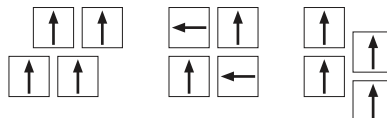
Ecotec cushion felt backing offers excellent sound absorbency, creating a better working and living environment.

Goodrich Global
SINCE 1983

Dye Infusion



Installation Methods :



Specifications are based on average normal manufacturing tolerances, variations do not affect product performance.

As with all quality carpets, slight variations in color may occur from dye lot to dye lot.

Protective chair pads are recommended under office chairs with roller castors to preserve appearance retention and to avoid excessive wear.

For end of life disposal, please refer to your country's disposal regulation.



Declare.



IN THE PARK

IN THE PARK



IN THE PARK

Sand Pit - Garden Grey+Turquoise 700502+02 , Botany - Garden Grey+Atlantic 700602+25



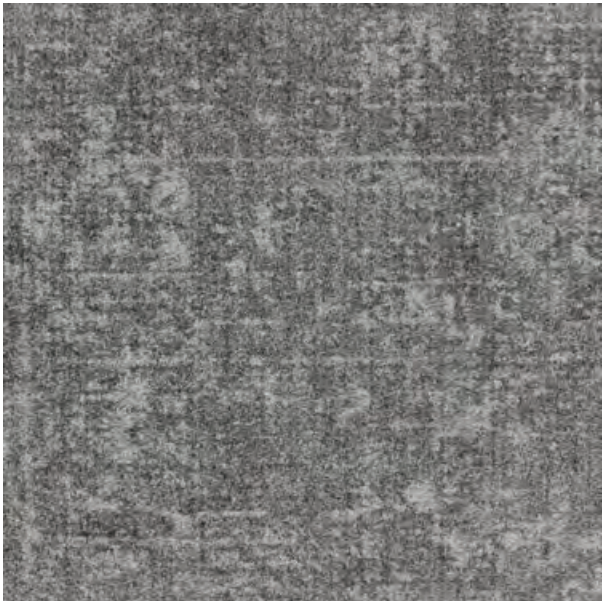




Sand Pit - Stormy Sky 700501



Sand Pit - Garden Grey 700502



Sand Pit - Smoky Grey 700505



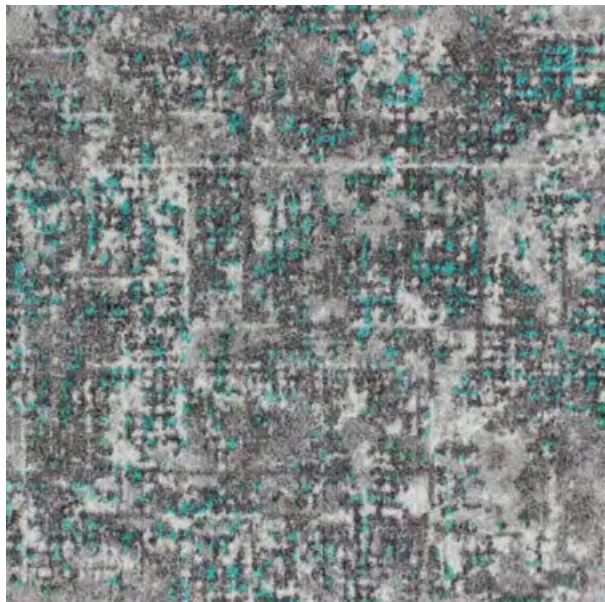
Sand Pit - Moondust 700506



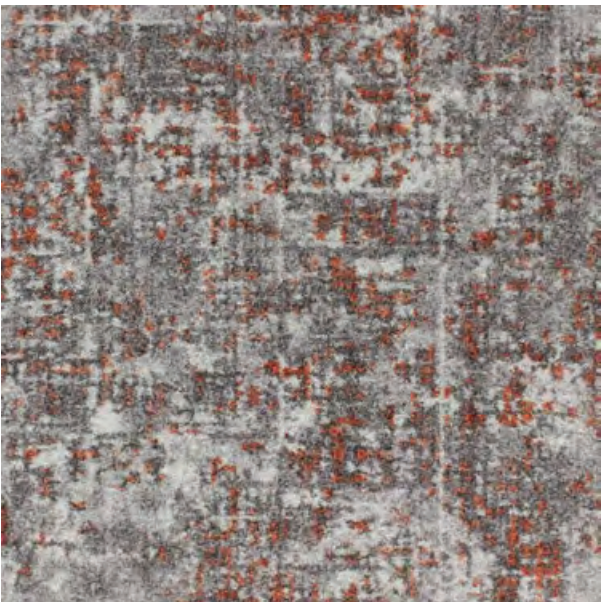
Sand Pit - Garden Grey+Warm Purple
700502+09



Sand Pit - Garden Grey+Atlantic 700502+25



Sand Pit - Garden Grey+Turquoise
700502+02



Sand Pit - Garden Grey+Red Soil 700502+04



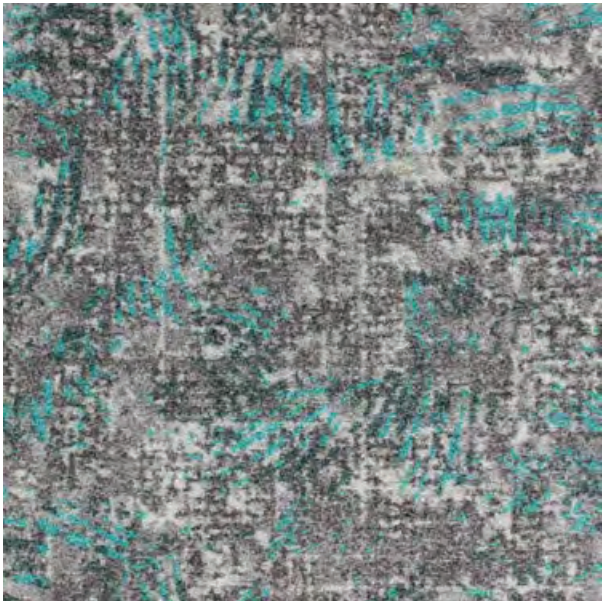
Botany - Grey Owl 700601



Botany - Garden Grey+Warm Purple
700602+09



Botany - Garden Grey+Atlantic 700602+25



Botany - Garden Grey+Turquoise 700602+02







IN THE PARK

Sand Pit - Pale Oak 700503 , Pale Oak+Rust 700503+01





Sand Pit - Pale Oak 700503



Sand Pit - Pale Oak+Cherry Red 700503+28



Sand Pit - Pale Oak+Rust 700503+01



Sand Pit - Pale Oak+Olive 700503+23



Botany - Moonshine 700605



Botany - Pale Oak+Cherry Red 700603+28



Botany - Pale Oak+Rust 700603+01



Botany - Pale Oak+Olive 700603+23



IN THE PARK

Sand Pit - White Sand 700504 , White Sand+Sunset 700504+10 , Botany - White Sand+Red Soil 700604+04



Sand Pit - White Sand 700504 , Botany - White Sand+Rust 700604+01



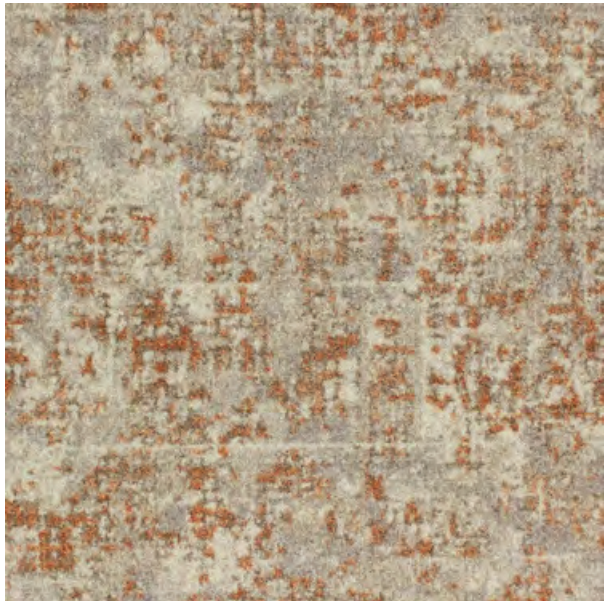
IN THE PARK



Sand Pit - White Sand 700504



Sand Pit - White Sand+Red Soil 700504+04



Sand Pit - White Sand+Rust 700504+01



Sand Pit - White Sand+Sunset 700504+10



Botany - Horizon 700606



Botany - White Sand+Red Soil 700604+04



Botany - White Sand+Rust 700604+01



Botany - White Sand+Sunset 700604+10

Product specifications :

Construction	Textured tufted loop pile
Face Fiber	Now available in both fibers : - 100% Sorona® Fiber or - 100% ReVi (HD PBT - High density polybutylene terephthalate)
Dyed Method	Dye Infusion
Total Thickness	8.5 mm
Total Density	200,000 /m²
Backing	ECOTEC® (recycled PET cushion backing)
Tile Size	60 cm x 60 cm
Wear Classification	Hexapod ≥ 3.5 Heavy commercial
Flammability	≥ 0.45 (Class I)
Electrostatic Propensity	AATCC 134 ≤ 3kv
Colorfastness To Light	AATCC 16E ≥ 4
Noise Reduction Coefficient	ASTM C423-22 NRC 0.25 or higher
Indoor Air Quality	Singapore Green Building Council

Advantages :



Lifetime Stain Resistant



Exceptional Durability



Anti-Microbial



Ecotec Cushion Backing



Sound Absorbency

Permanent lifetime stain resistant is built into the core of the fiber. Just clean stubborn stains such as coffee with cold water, reducing cost and time.

Exceptional durability. Sorona and ReVi biopolymer molecular spring like structure, coupled with Ecotec cushion backing, allowing the fiber to bounce back into original shape after being compressed.

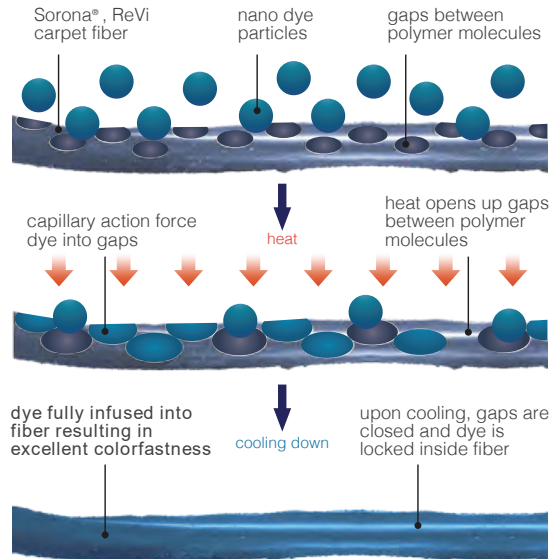
Sorona and ReVi dries faster and absorbs 16 times less moisture than nylon. Resulting in excellent anti-microbial, anti-mold and fungi properties where the environment for bacteria to breed is exceptionally reduced.

Ecotec cushion felt backing recycled from PET bottles offers superior walking comfort, and extends the life of the carpet by absorbing foot impact.

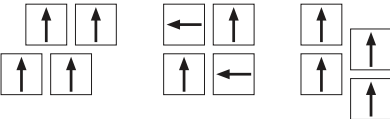
Ecotec cushion felt backing offers excellent sound absorbency, creating a better working and living environment.



Dye Infusion



Installation Methods :



Specifications are based on average normal manufacturing tolerances, variations do not affect product performance. As with all quality carpets , slight variations in color may occur from dye lot to dye lot.

Protective chair pads are recommended under office chairs with roller castors to preserve appearance retention and to avoid excessive wear.

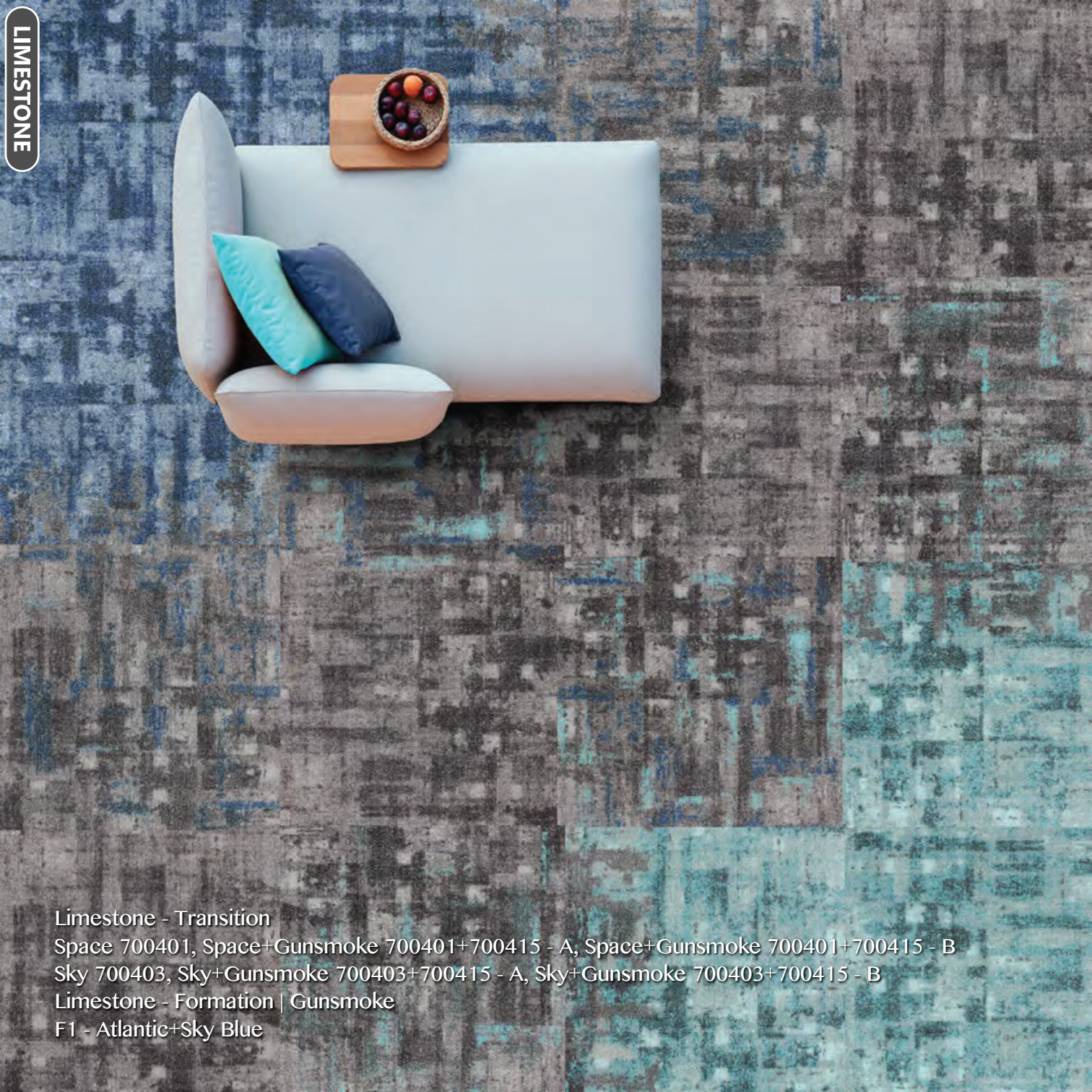
For end of life disposal, please refer to your country's disposal regulation.





LIMESTONE

LIMESTONE



LIMESTONE

Limestone - Transition

Space 700401, Space+Gunsmoke 700401+700415 - A, Space+Gunsmoke 700401+700415 - B
Sky 700403, Sky+Gunsmoke 700403+700415 - A, Sky+Gunsmoke 700403+700415 - B

Limestone - Formation | Gunsmoke

F1 - Atlantic+Sky Blue

Limestone - Transition
Grey Sky 700416, Grey Sky+Black 700416+700414 - A, Grey Sky+Black 700416+700414 - B



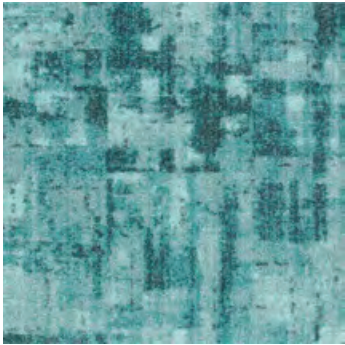
Limestone - Transition
Army 700405, Army+Gunsmoke 700405+700415 - A, Army+Gunsmoke 700405+700415 - B



Limestone - Transition
Royal Beige 700412, Royal Beige+Mud 700412+700413 - A, Royal Beige+Mud 700412+700413 - B



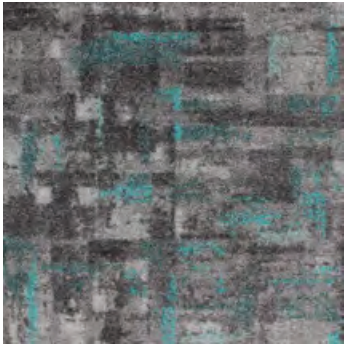
Limestone - Transition
Tiffany 700402, Tiffany+Gunsmoke 700402+700415 - A, Tiffany+Gunsmoke 700402+700415 - B



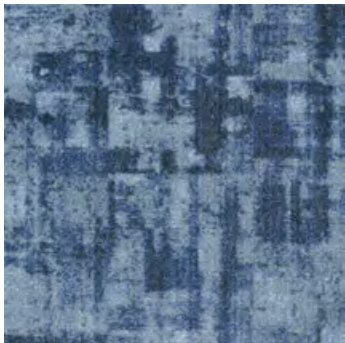
Tiffany 700402



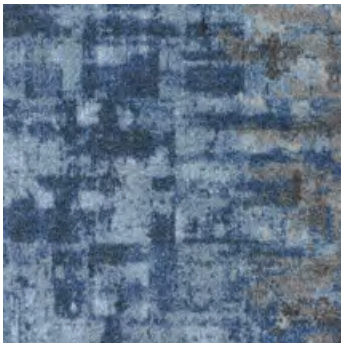
Tiffany+Gunsmoke
700402+700415 - A



Tiffany+Gunsmoke
700402+700415 - B



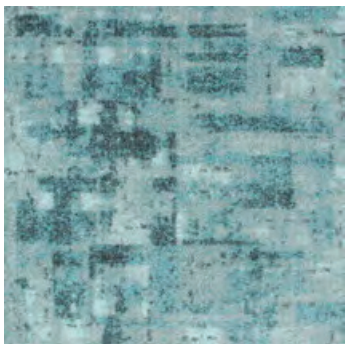
Space 700401



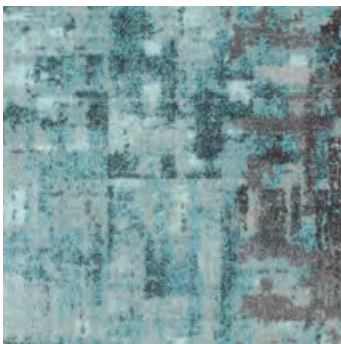
Space+Gunsmoke
700401+700415 - A



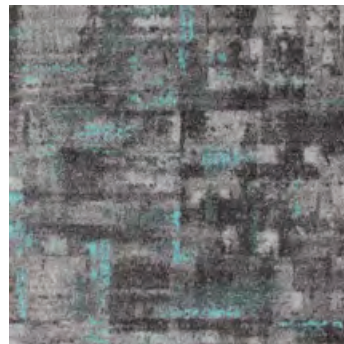
Space+Gunsmoke
700401+700415 - B



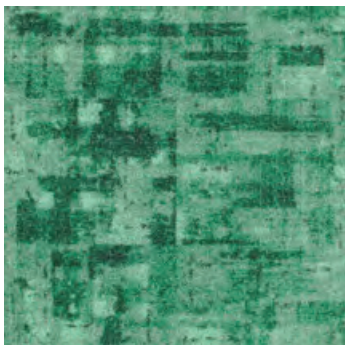
Sky 700403



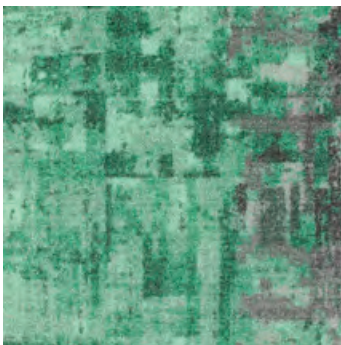
Sky+Gunsmoke
700403+700415 - A



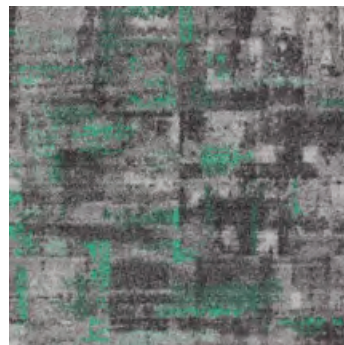
Sky+Gunsmoke
700403+700415 - B



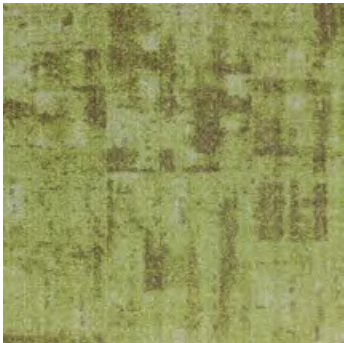
Sea 700404



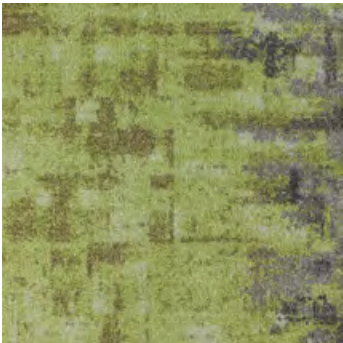
Sea+Gunsmoke
700404+700415 - A



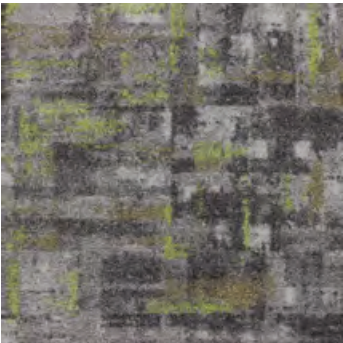
Sea+Gunsmoke
700404+700415 - B



Army 700405



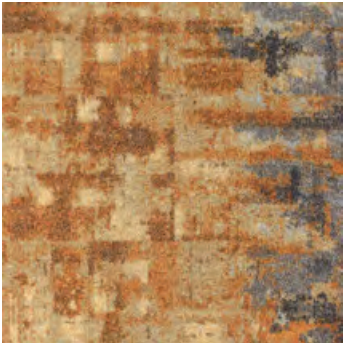
Army+Gunsmoke
700405+700415 - A



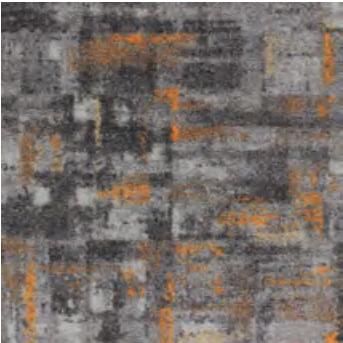
Army+Gunsmoke
700405+700415 - B



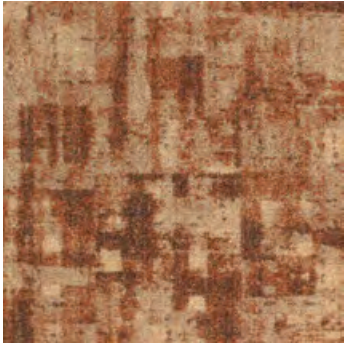
Flaming 700406



Flaming+Gunsmoke
700406+700415 - A



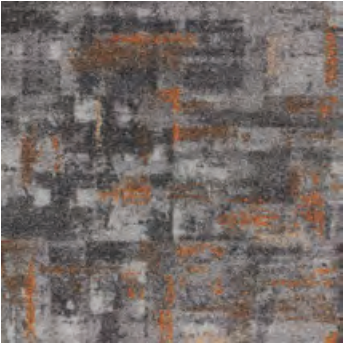
Flaming+Gunsmoke
700406+700415 - B



Cider 700407



Cider+Gunsmoke
700407+700415 - A



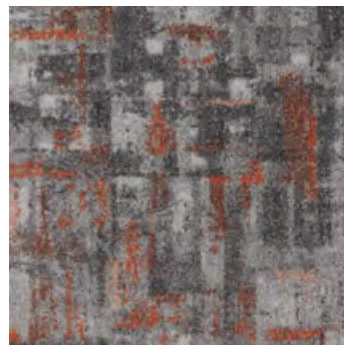
Cider+Gunsmoke
700407+700415 - B



Fire 700408



Fire+Gunsmoke
700408+700415 - A



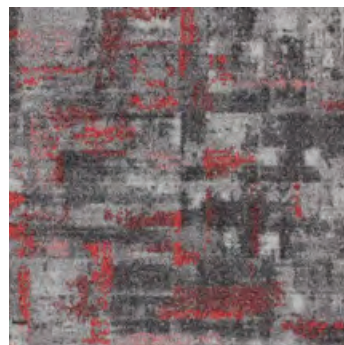
Fire+Gunsmoke
700408+700415 - B



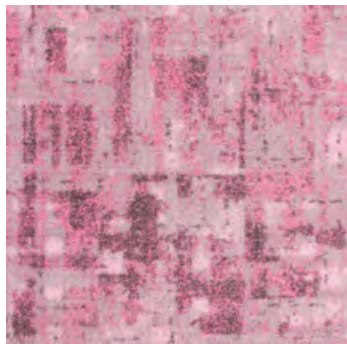
Wine 700409



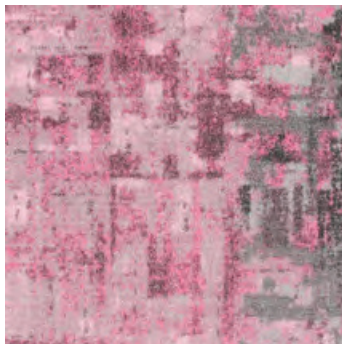
Wine+Gunsmoke
700409+700415 - A



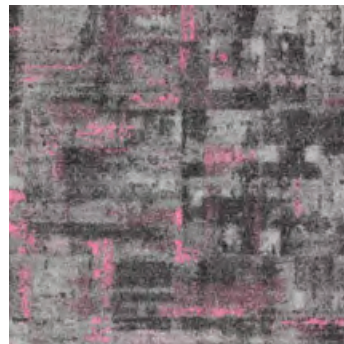
Wine+Gunsmoke
700409+700415 - B



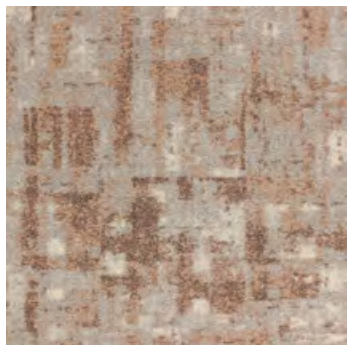
Charm 700410



Charm+Gunsmoke
700410+700415 - A



Charm+Gunsmoke
700410+700415 - B



Pastel Peach 700411



Pastel Peach+Gunsmoke
700411+700415 - A



Pastel Peach+Gunsmoke
700411+700415 - B



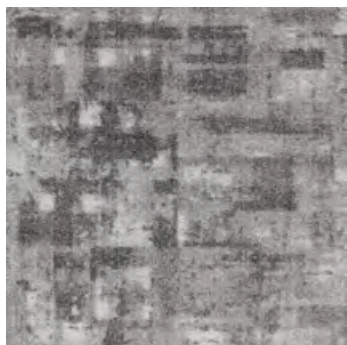
Royal Beige 700412



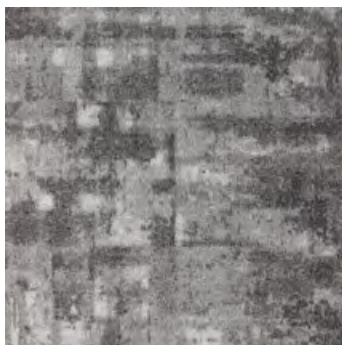
Royal Beige+Mud
700412+700413 - A



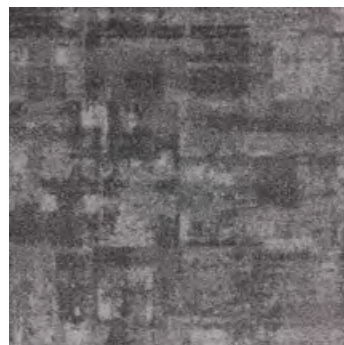
Royal Beige+Mud
700412+700413 - B



Grey Sky 700416



Grey Sky+Black
700416+700414 - A

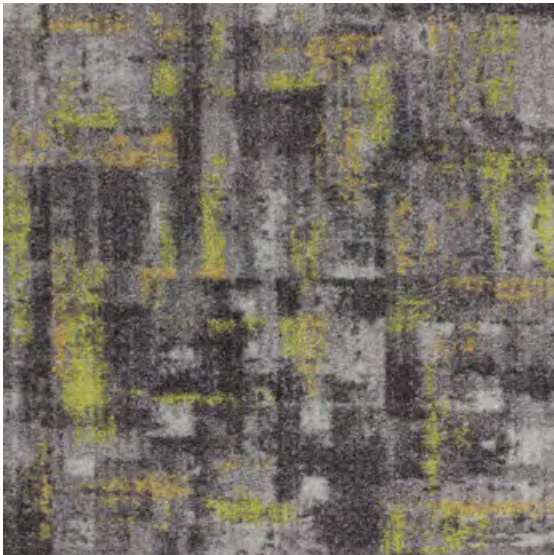


Grey Sky+Black
700416+700414 - B



LIMESTONE

Limestone - Formation | Gunsmoke
F7 - Rust+Peach



F5 - Meadow+Mustard



F6 - Mustard+Rust



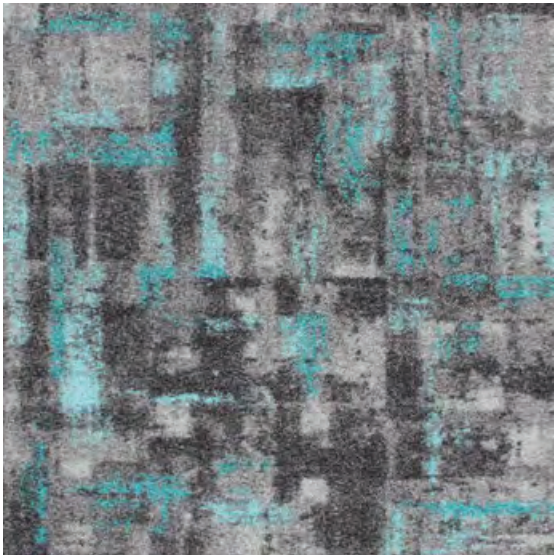
F7 - Rust+Peach



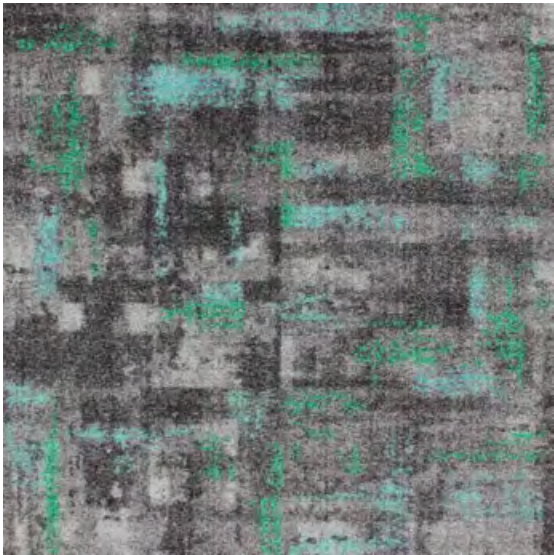
F8 - Peach+Sky Blue



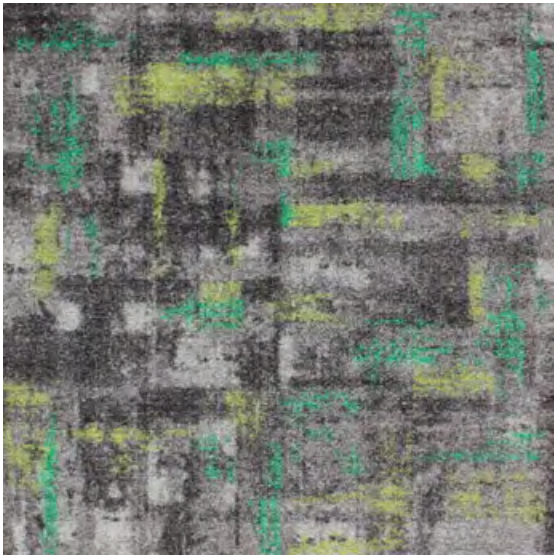
F1 - Atlantic+Sky Blue



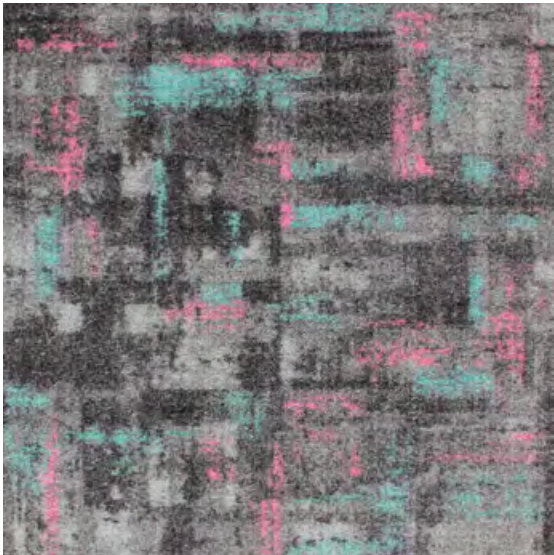
F2 - Sky Blue+Turquoise



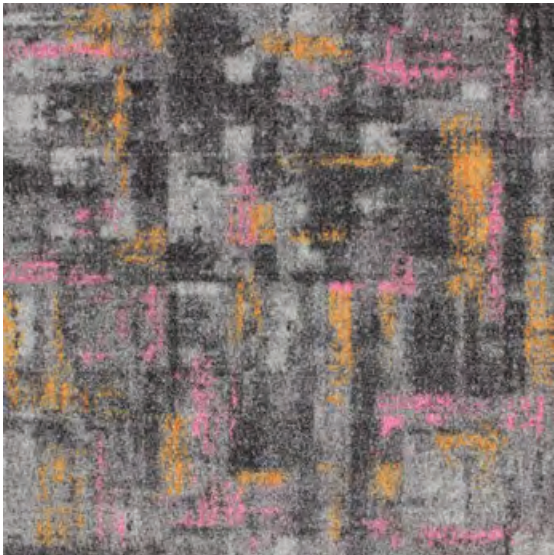
F3 - Emerald+Glacier



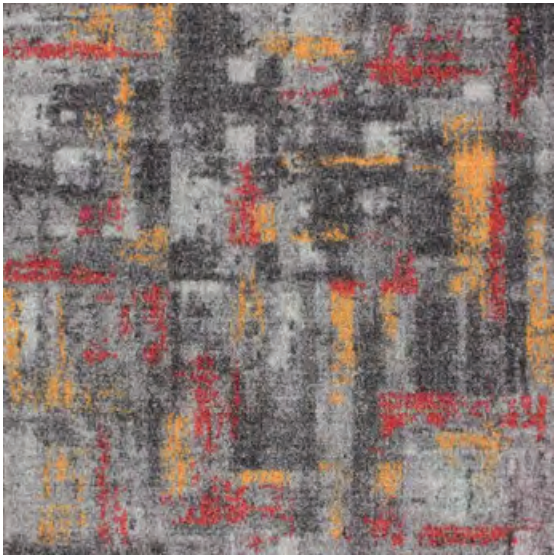
F4 - Emerald+Moss



F9 - Pink+Glacier



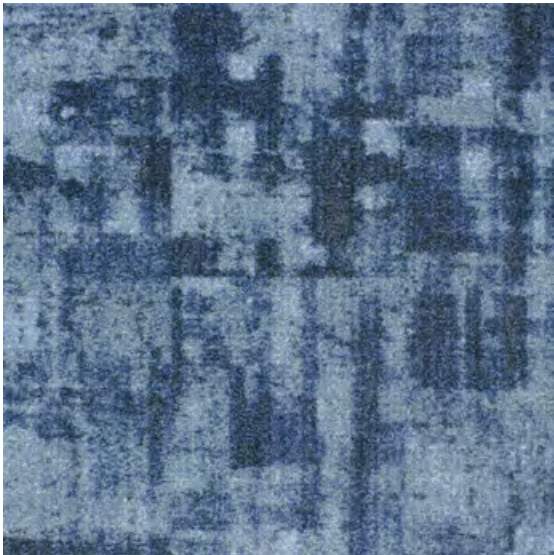
F10 - Pink+Sunset



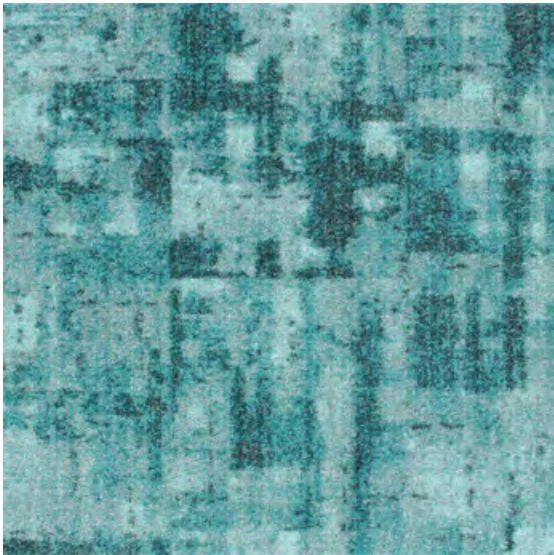
F11 - Cherry Red+Sunset



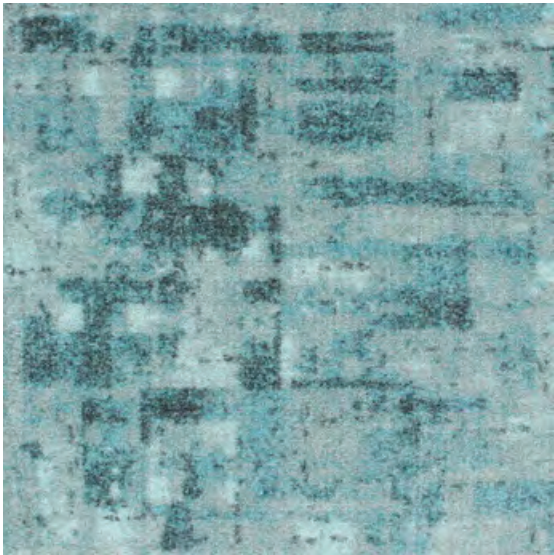
F12 - Cherry Red+Pink



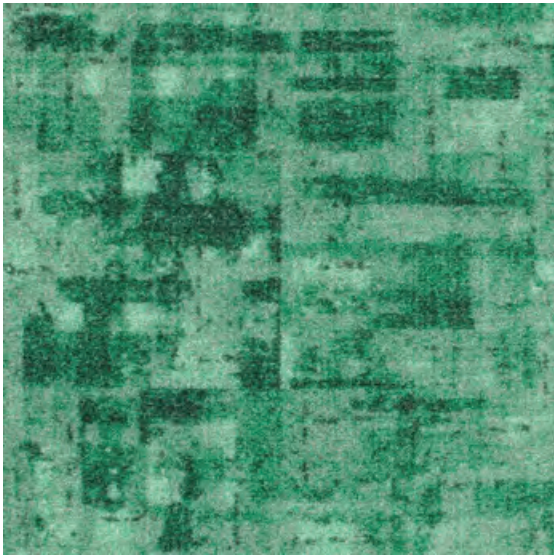
Space 700401



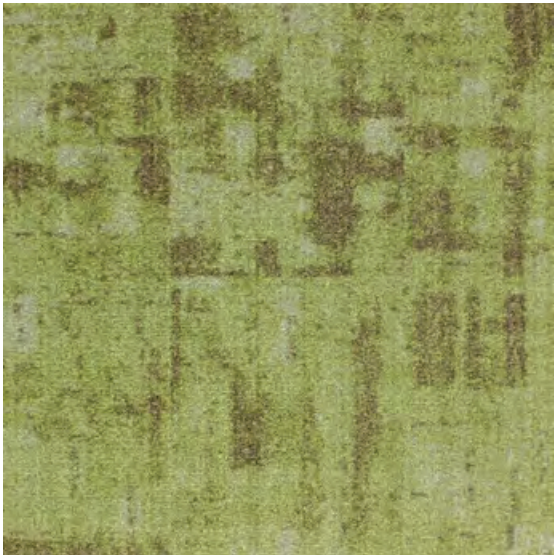
Tiffany 700402



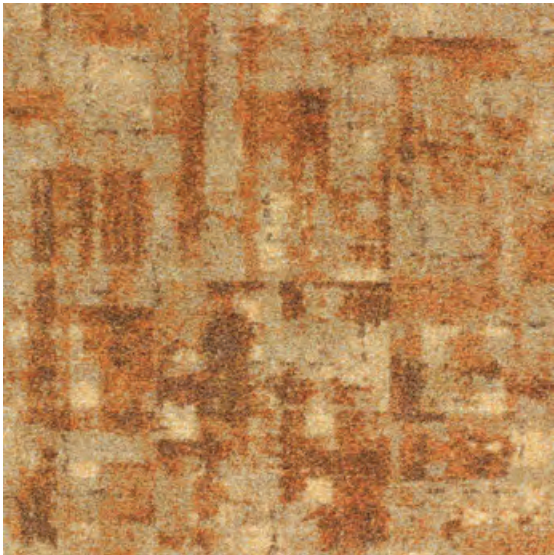
Sky 700403



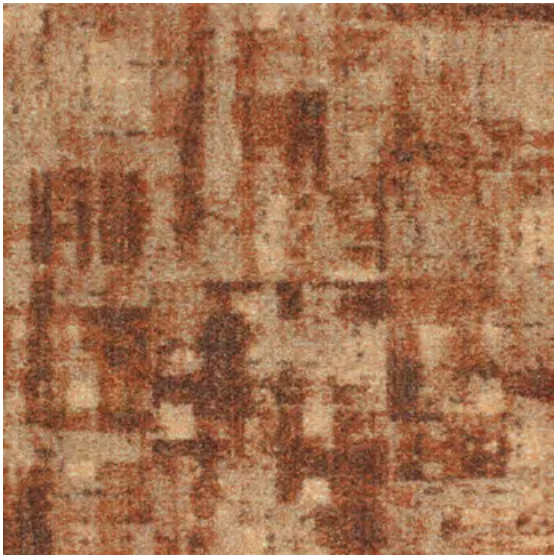
Sea 700404



Army 700405



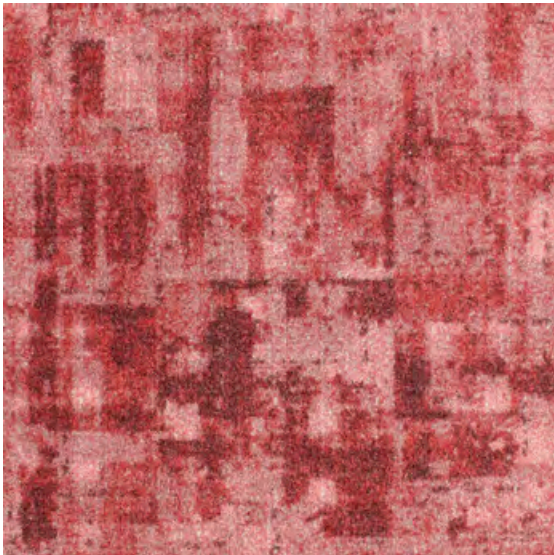
Flaming 700406



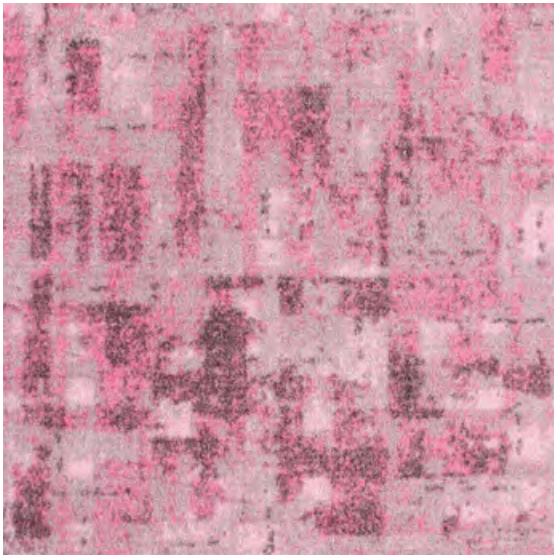
Cider 700407



Fire 700408



Wine 700409



Charm 700410



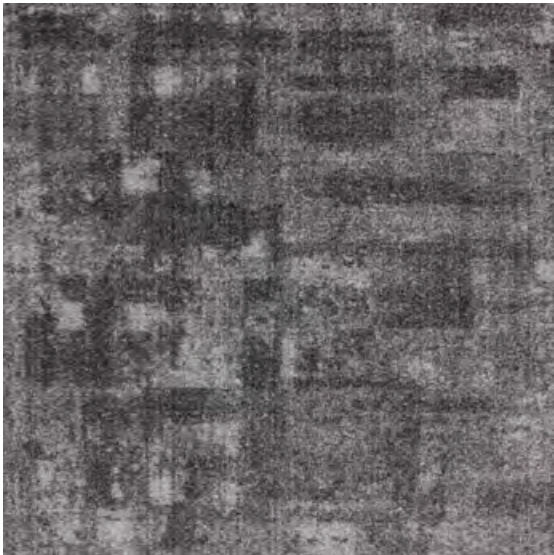
Pastel Peach 700411



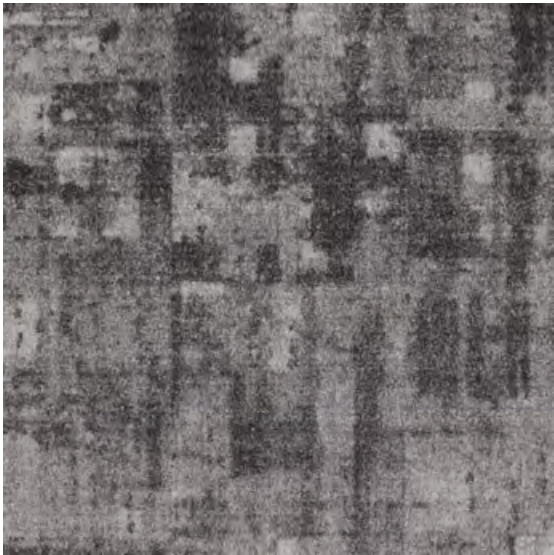
Royal Beige 700412



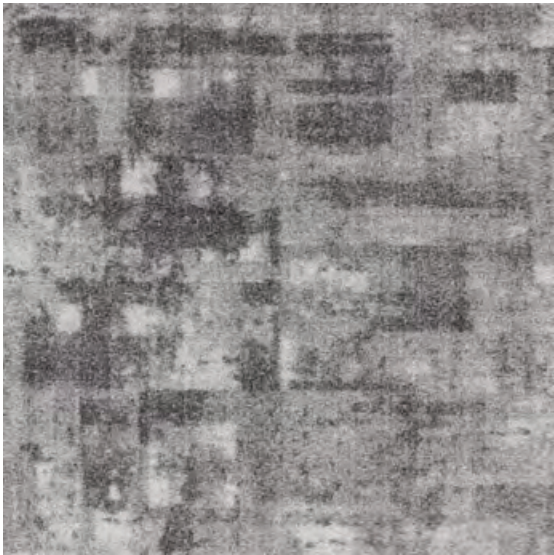
Mud 700413



Black 700414



Gunsmoke 700415



Grey Sky 700416

Product specifications :

Construction	Textured tufted loop pile
Face Fiber	Now available in both fibers : - 100% Sorona® Fiber or - 100% ReVi (HD PBT - High density polybutylene terephthalate)
Dyed Method	Dye Infusion
Total Thickness	8.5 mm
Total Density	200,000 /m²
Backing	ECOTEC® (recycled PET cushion backing)
Tile Size	60 cm x 60 cm
Wear Classification	Hexapod ≥ 3.5 Heavy commercial
Flammability	≥ 0.45 (Class I)
Electrostatic Propensity	AATCC 134 ≤ 3kv
Colorfastness To Light	AATCC 16E ≥ 4
Noise Reduction Coefficient	ASTM C423-22 NRC 0.25 or higher
Indoor Air Quality	Singapore Green Building Council

Advantages :



Lifetime Stain Resistant



Exceptional Durability



Anti-Microbial



Ecotec Cushion Backing



Sound Absorbency

Permanent lifetime stain resistant is built into the core of the fiber. Just clean stubborn stains such as coffee with cold water, reducing cost and time.

Exceptional durability. Sorona and ReVi biopolymer molecular spring like structure, coupled with Ecotec cushion backing, allowing the fiber to bounce back into original shape after being compressed.

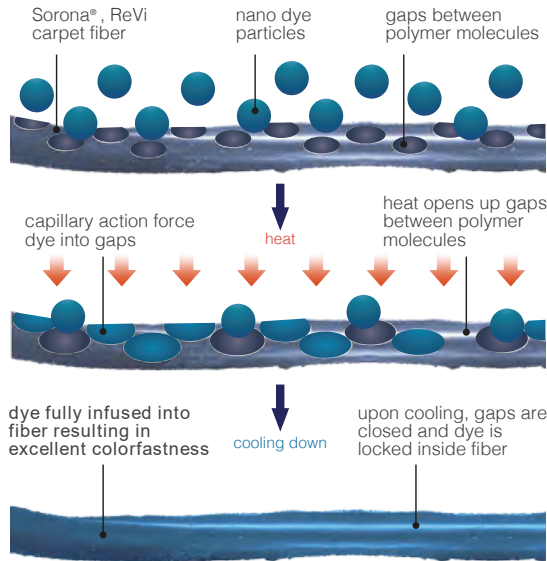
Sorona and ReVi dries faster and absorbs 16 times less moisture than nylon. Resulting in excellent anti-microbial, anti-mold and fungi properties where the environment for bacteria to breed is exceptionally reduced.

Ecotec cushion felt backing recycled from PET bottles offers superior walking comfort, and extends the life of the carpet by absorbing foot impact.

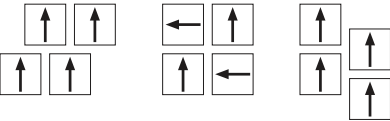
Ecotec cushion felt backing offers excellent sound absorbency, creating a better working and living environment.



Dye Infusion



Installation Methods :



Specifications are based on average normal manufacturing tolerances, variations do not affect product performance. As with all quality carpets , slight variations in color may occur from dye lot to dye lot.

Protective chair pads are recommended under office chairs with roller castors to preserve appearance retention and to avoid excessive wear.

For end of life disposal, please refer to your country's disposal regulation.

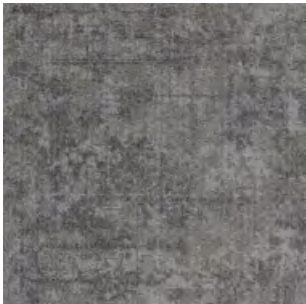


MOSSTONE

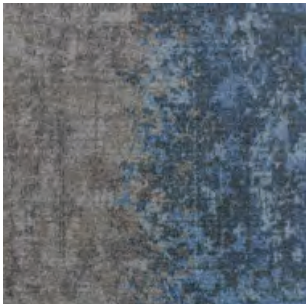
MOSSTONE



MOSSTONE



Mosstone -
Cloud 700703



Mosstone Mix -
Cloud+Tahoe Blue AB
700703+700706



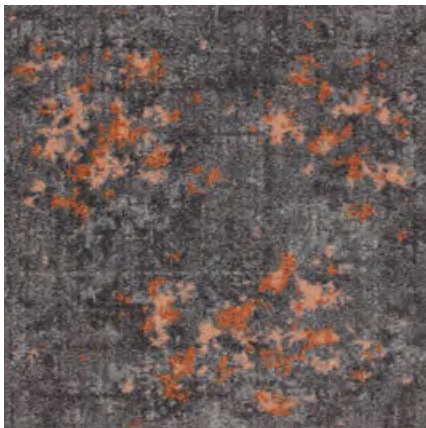
Mosstone -
Tahoe Blue 700706



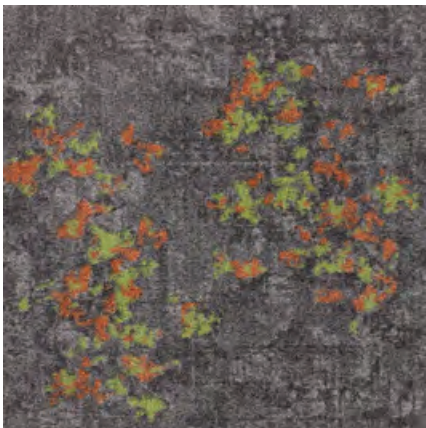
MOSSTONE

Mosstone - Portland Grey 700701, Mosstone+2 Accents - Portland Grey+Sky Blue, Peach 700701+34, 33

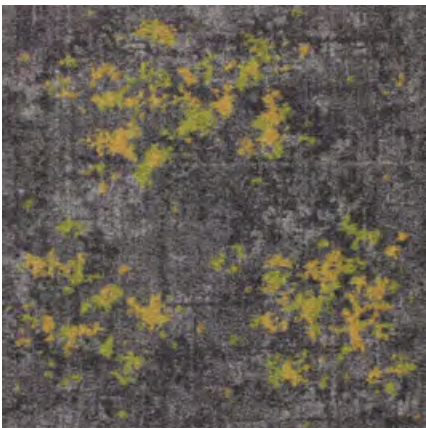




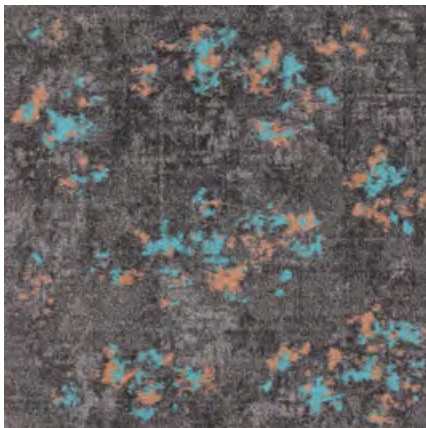
Portland Grey+Rust, Peach
700701+01, 33



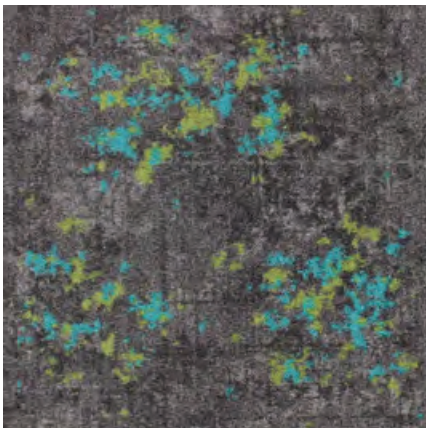
Portland Grey+Rust, Moss
700701+01, 14



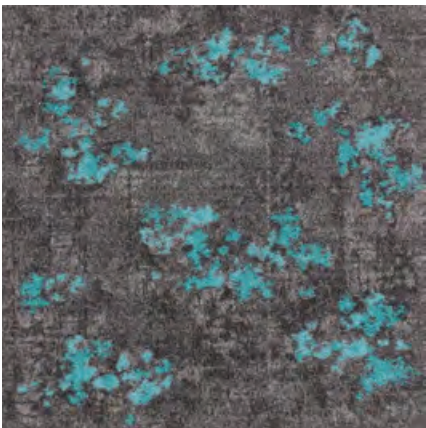
Portland Grey+Meadow,
Mustard 700701+24, 06



Portland Grey+Sky Blue,
Peach 700701+34, 33



Portland Grey+Turquoise,
Moss 700701+02, 14



Portland Grey+Turquoise,
Sky Blue 700701+02, 34

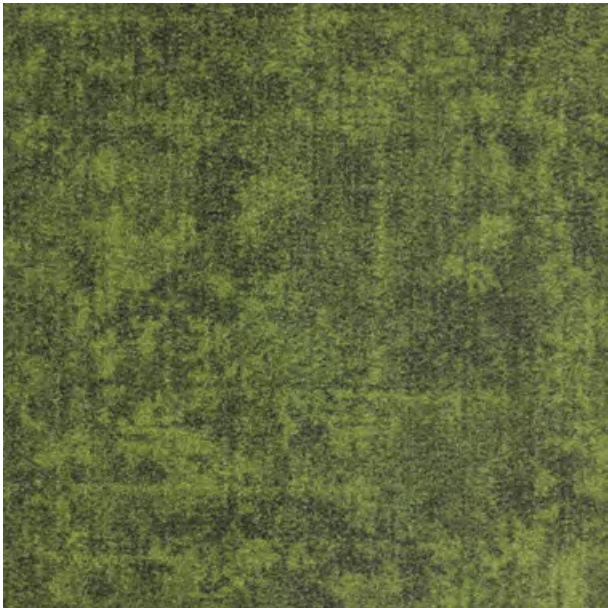


MOSSTONE

Mosstone Mix - White Sand+Brick AB 700705+700709



Tahoe Blue 700706



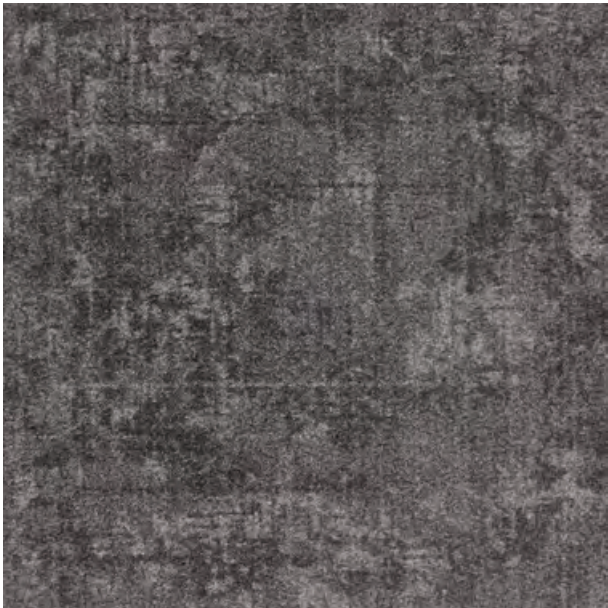
Asparagus 700708



Sandcastle 700707



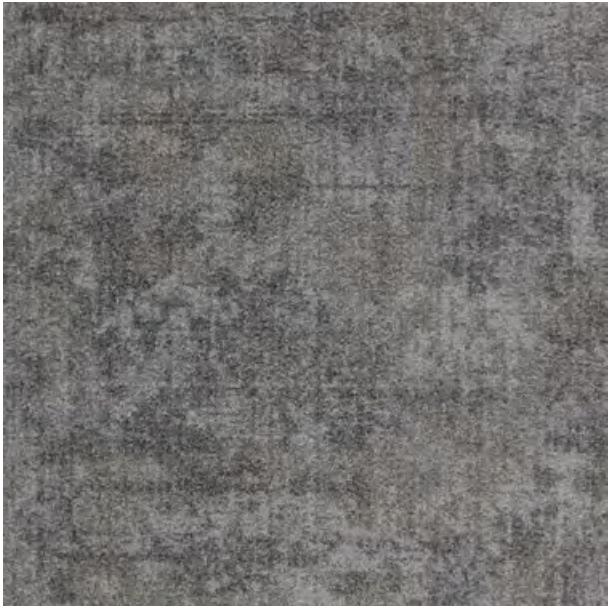
Brick 700709



Portland Grey 700701



Mineral 700702



Cloud 700703



Pale Oak 700704



White Sand 700705



Product specifications :

Construction	Textured tufted loop pile
Face Fiber	Now available in both fibers : - 100% Sorona® Fiber or - 100% ReVi (HD PBT - High density polybutylene terephthalate)
Dyed Method	Dye Infusion
Total Thickness	8.5 mm
Total Density	200,000 /m²
Backing	ECOTEC® (recycled PET cushion backing)
Tile Size	60 cm x 60 cm
Wear Classification	Hexapod ≥ 3.5 Heavy commercial
Flammability	≥ 0.45 (Class I)
Electrostatic Propensity	AATCC 134 ≤ 3kv
Colorfastness To Light	AATCC 16E ≥ 4
Noise Reduction Coefficient	ASTM C423-22 NRC 0.25 or higher
Indoor Air Quality	Singapore Green Building Council

Advantages :



Lifetime Stain Resistant



Exceptional Durability



Anti-Microbial



Ecotec Cushion Backing



Sound Absorbency

Permanent lifetime stain resistant is built into the core of the fiber. Just clean stubborn stains such as coffee with cold water, reducing cost and time.

Exceptional durability. Sorona and ReVi biopolymer molecular spring like structure, coupled with Ecotec cushion backing, allowing the fiber to bounce back into original shape after being compressed.

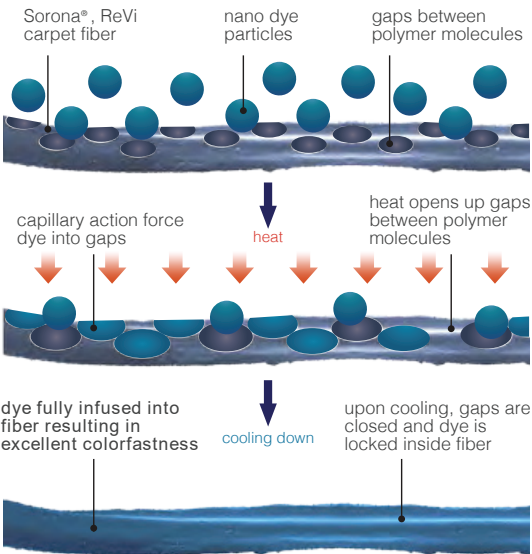
Sorona and ReVi dries faster and absorbs 16 times less moisture than nylon. Resulting in excellent anti-microbial, anti-mold and fungi properties where the environment for bacteria to breed is exceptionally reduced.

Ecotec cushion felt backing recycled from PET bottles offers superior walking comfort, and extends the life of the carpet by absorbing foot impact.

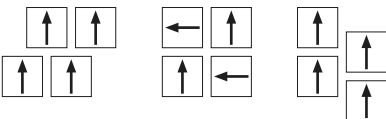
Ecotec cushion felt backing offers excellent sound absorbency, creating a better working and living environment.



Dye Infusion



Installation Methods :



Specifications are based on average normal manufacturing tolerances, variations do not affect product performance.

As with all quality carpets , slight variations in color may occur from dye lot to dye lot.

Protective chair pads are recommended under office chairs with roller castors to preserve appearance retention and to avoid excessive wear.

For end of life disposal, please refer to your country's disposal regulation.



Declare.

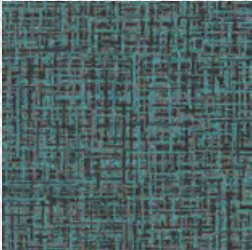


WOVEN

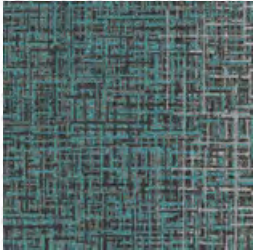
The image features a vibrant, abstract background composed of numerous thin, diagonal lines in a variety of colors including green, blue, red, and yellow. Overlaid on this background are several rectangular patches of woven fabric. These patches include a dark brown and black pattern in the upper left, a grey and black pattern in the upper right, a grey and black pattern in the lower left, and a grey and black pattern in the lower right. The word "WOVEN" is prominently displayed in the center in a bold, white, sans-serif font.



Connectivity and link pattern that can bring up the unity within the design and function of the space.



Arctic 05918



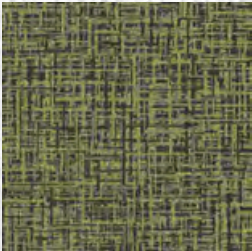
Arctic 05918 + Rain
Cloud 05901 - A



Arctic 05918 + Rain
Cloud 05901 - B



Rain Cloud 05901



Pear 05907 24



Pear 05907 24 + Rain
Cloud 05901 - A



Pear 05907 24 + Rain
Cloud 05901 - B



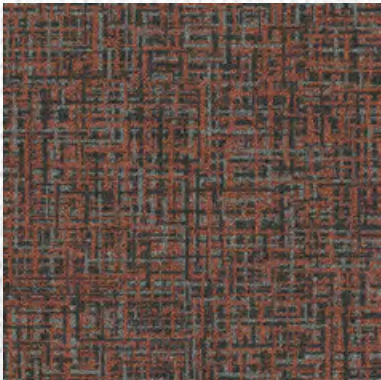
Rain Cloud 05901



WOVEN



Mix-triangle | Red Ginger-Rain Cloud, Sunshine-Rain Cloud



Woven

Red Ginger 05904 04



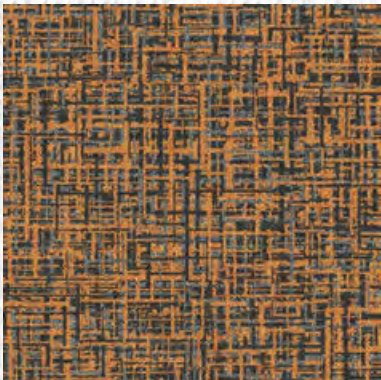
Woven | Mix-triangle

Red Ginger 05904 04-Rain
Cloud 05901 P1



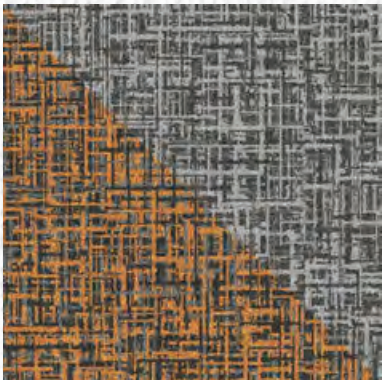
Woven

Rain Cloud 05901



Woven

Sunshine 05910 10



Woven | Mix-triangle

Sunshine 05910 10-Rain
Cloud 05901 P1

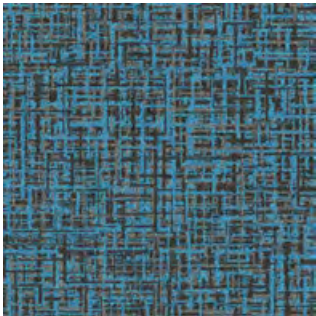


Woven

Rain Cloud 05901

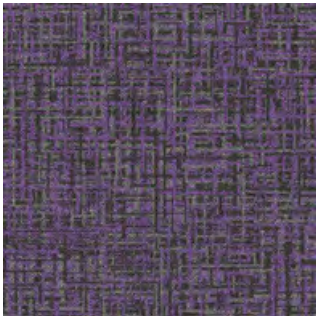


Mix-triangle | Sky Blue-Rain Cloud, Blue Berry-Rain Cloud



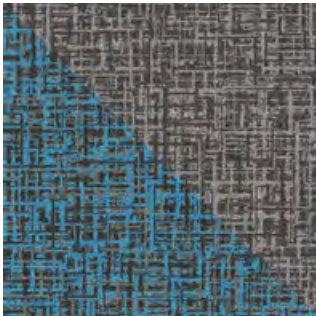
Woven

Sky Blue 05909 22



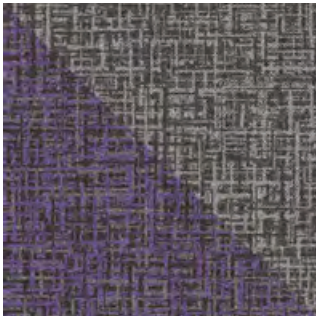
Woven

Blue Berry 05905 09



Woven | Mix-triangle

Sky Blue 05909 22-
Rain Cloud 05901 P1



Woven | Mix-triangle

Blue Berry 05905 09-
Rain Cloud 05901 P1



Woven | Mix-triangle

Sky Blue 05909 22-
Rain Cloud 05901 P2



Woven | Mix-triangle

Blue Berry 05905 09-
Rain Cloud 05901 P2



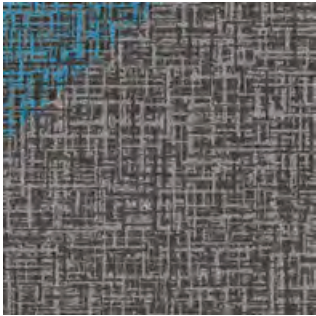
Woven | Mix-triangle

Sky Blue 05909 22-
Rain Cloud 05901 P3



Woven | Mix-triangle

Blue Berry 05905 09-
Rain Cloud 05901 P3



Woven | Mix-triangle

Sky Blue 05909 22-
Rain Cloud 05901 P4



Woven | Mix-triangle

Blue Berry 05905 09-
Rain Cloud 05901 P4



Woven

Rain Cloud 05901



WOVEN

Gradient | Terracotta 05917, Rain Cloud 05901, Cheese 05916 31

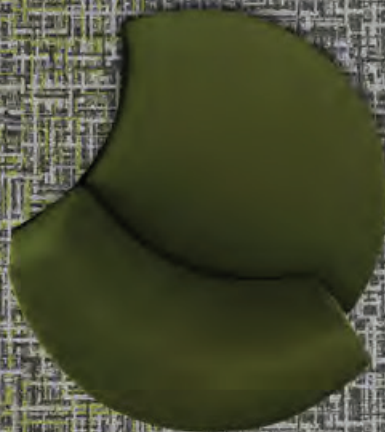
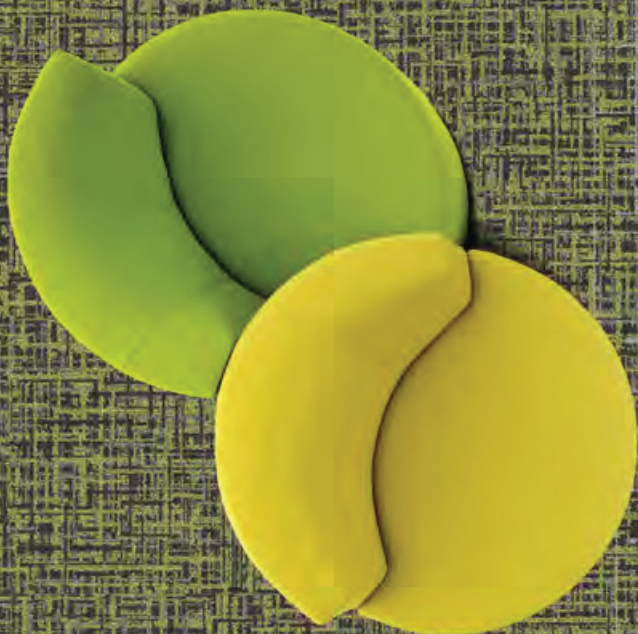


Woven | Red Ginger 05904 04, Pear 05907 24, Sunshine 05910 10, Blue Berry 05905 09,
Rain Cloud 05901



WOVEN

Gradient | Pear 05907 24, Rain Cloud 05901





WOVEN

Gradient | Red Ginger 05904 04, Rain Cloud 05901

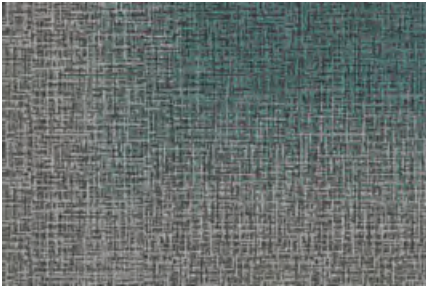


WOVEN

Gradient | Arctic 05918, Rain Cloud 05901



Arctic 05918 + Rain Cloud 05901 - Corner 1



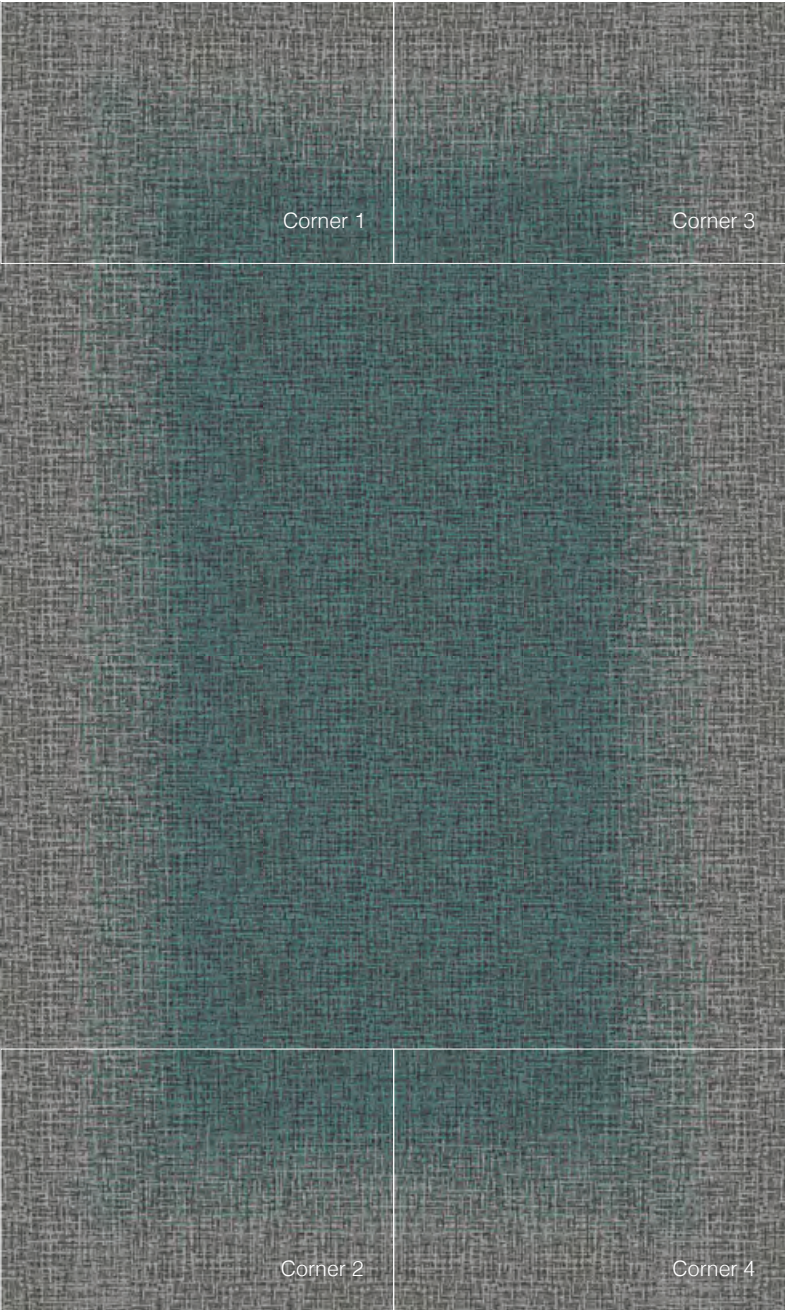
Arctic 05918 + Rain Cloud 05901 - Corner 2

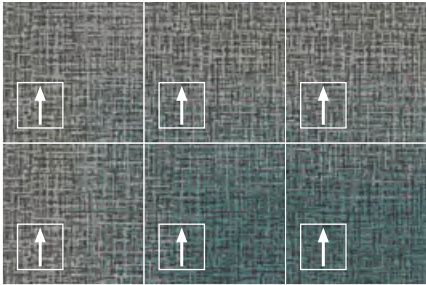


Arctic 05918 + Rain Cloud 05901 - Corner 3

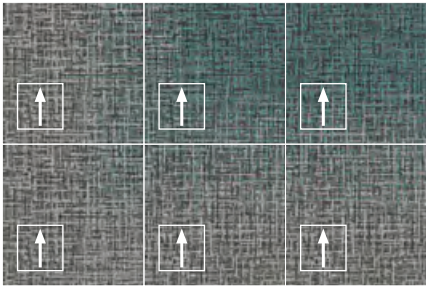


Arctic 05918 + Rain Cloud 05901 - Corner 4

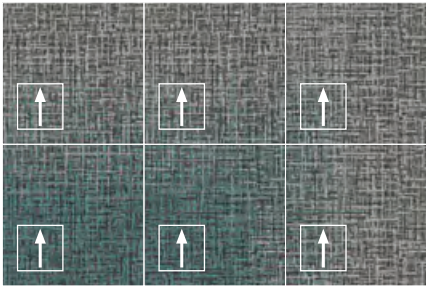




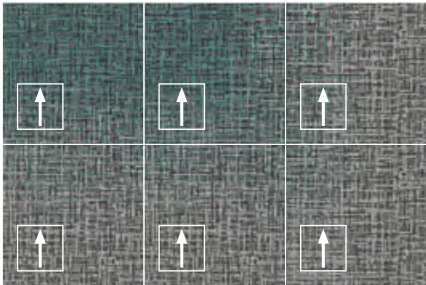
Arctic 05918 + Rain Cloud 05901 - Corner 1



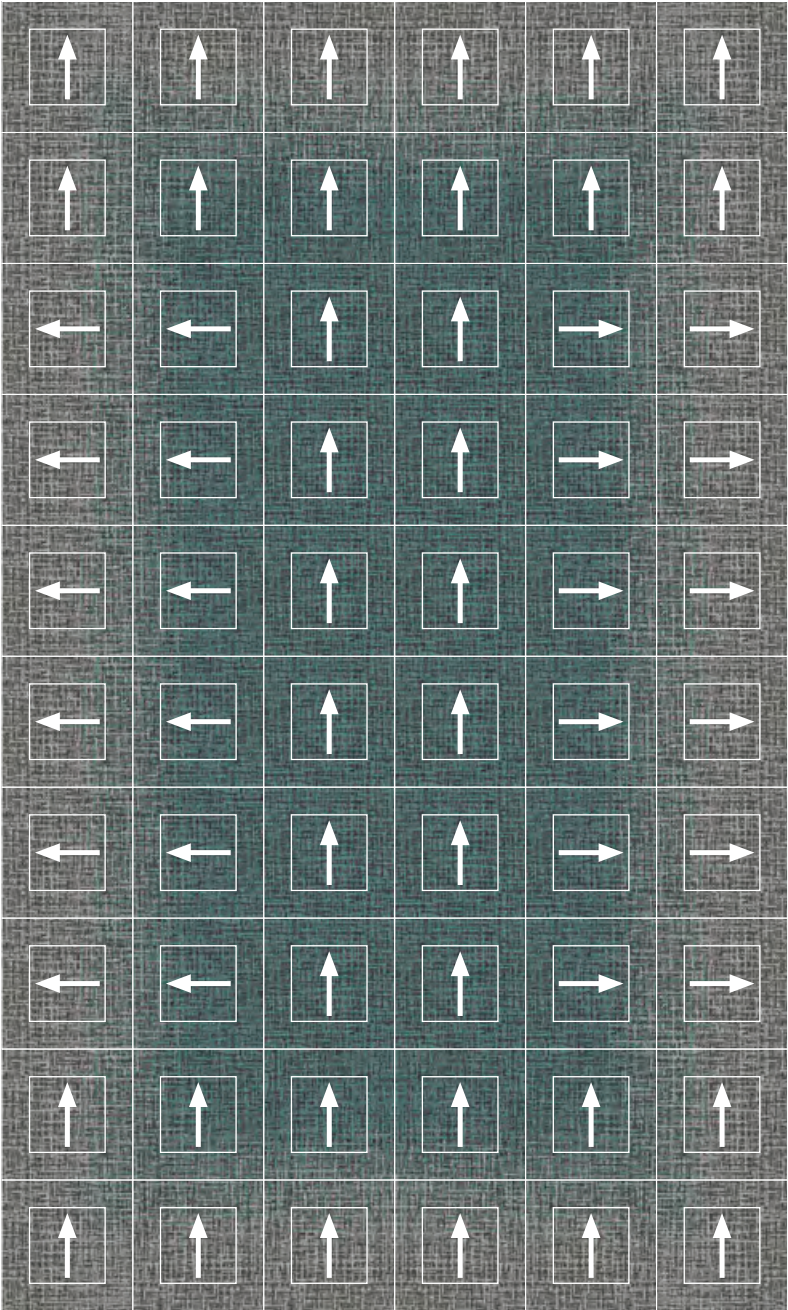
Arctic 05918 + Rain Cloud 05901 - Corner 2

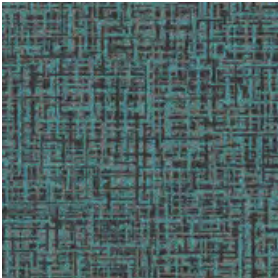


Arctic 05918 + Rain Cloud 05901 - Corner 3



Arctic 05918 + Rain Cloud 05901 - Corner 4





Arctic 05918



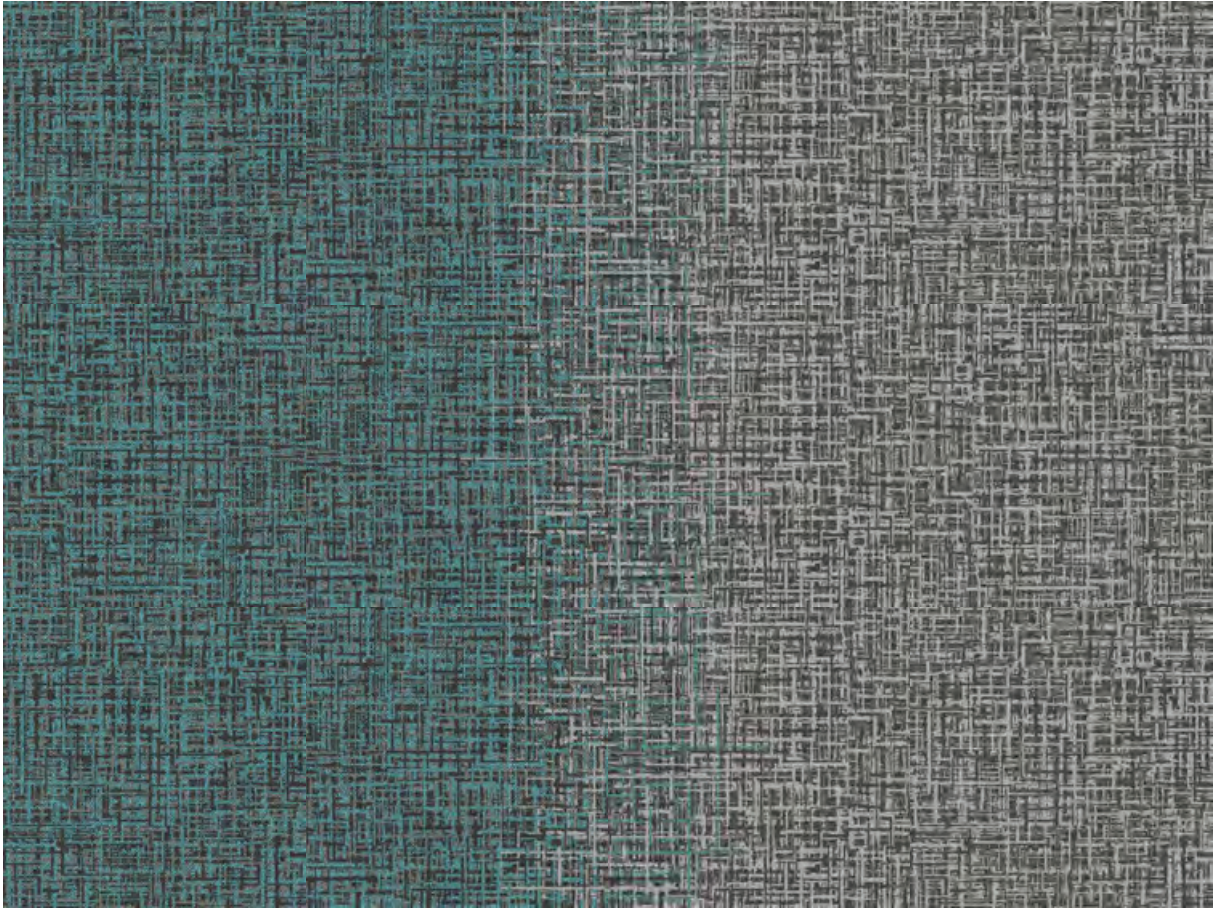
Arctic 05918 + Rain
Cloud 05901 - A



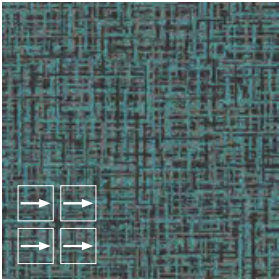
Arctic 05918 + Rain
Cloud 05901 - B



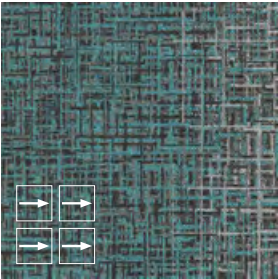
Rain Cloud 05901



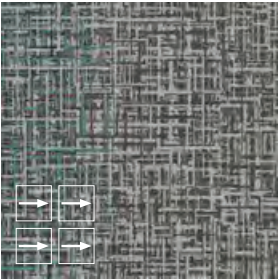
Gradient | Arctic + Rain Cloud



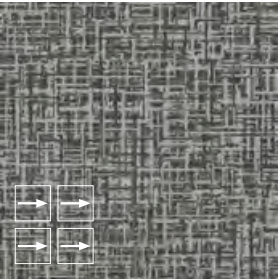
Arctic 05918



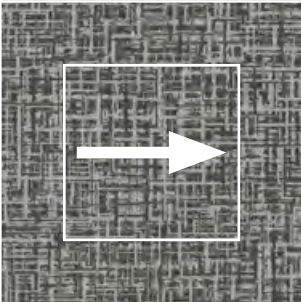
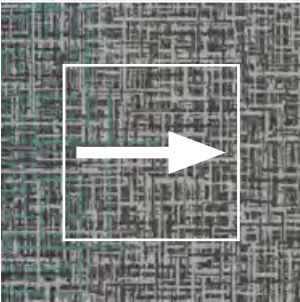
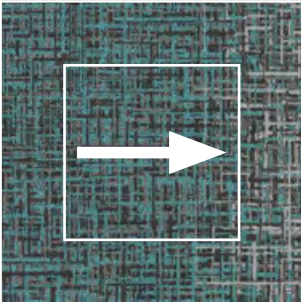
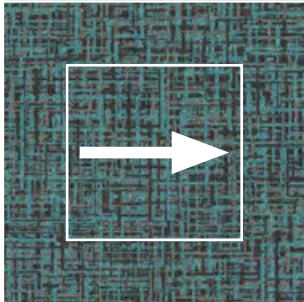
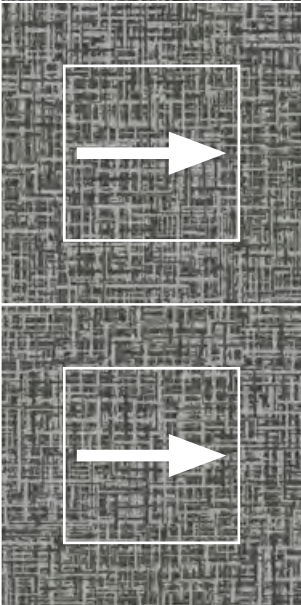
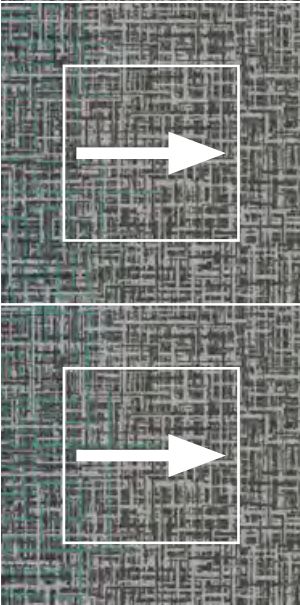
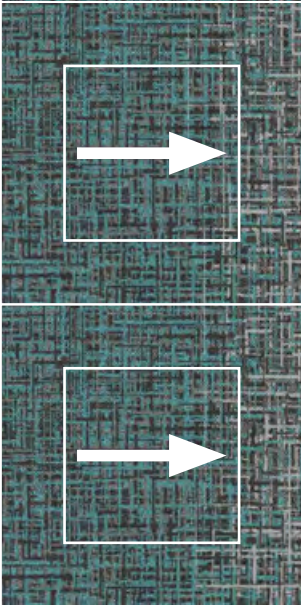
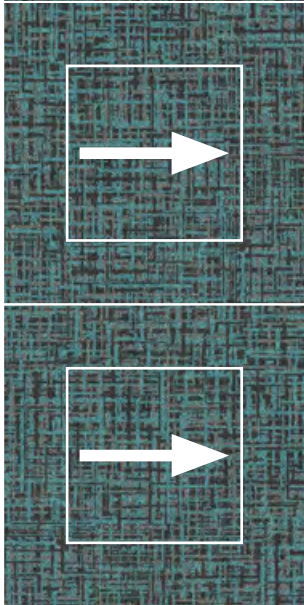
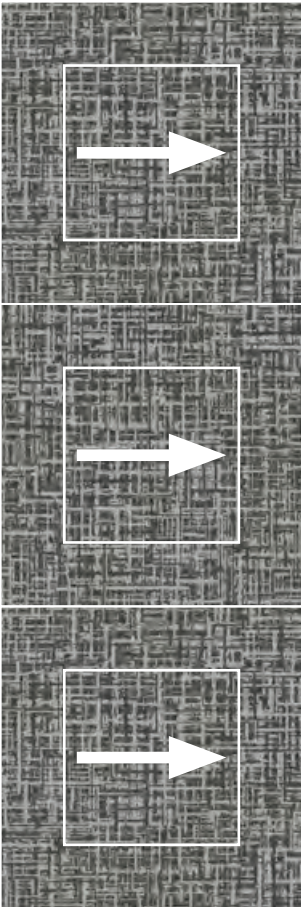
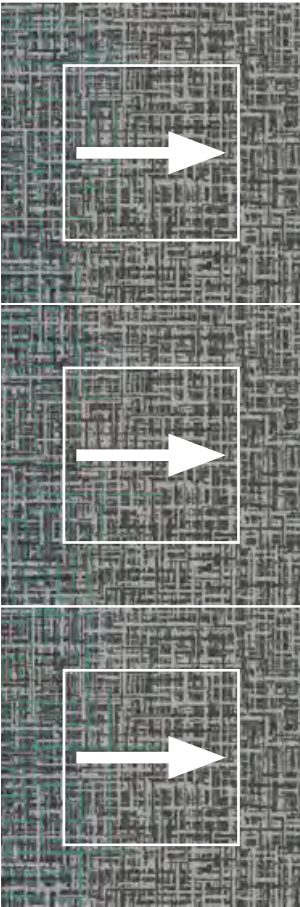
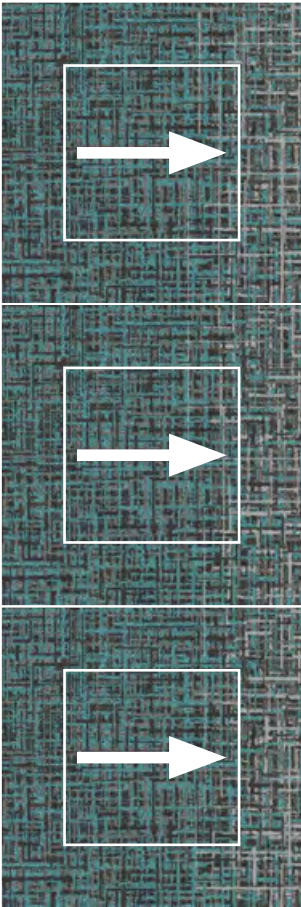
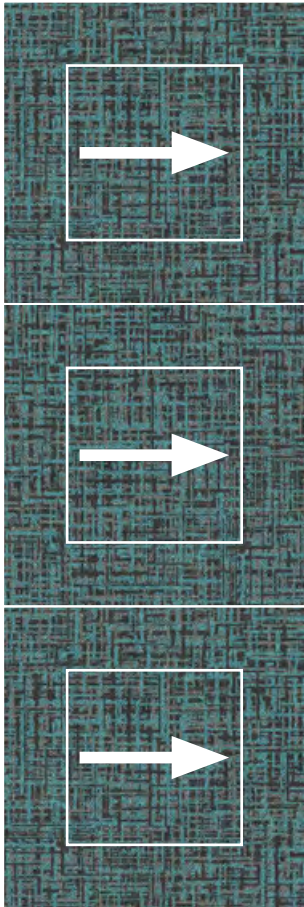
Arctic 05918 + Rain
Cloud 05901 - A



Arctic 05918 + Rain
Cloud 05901 - B



Rain Cloud 05901





WOVEN





WOVEN

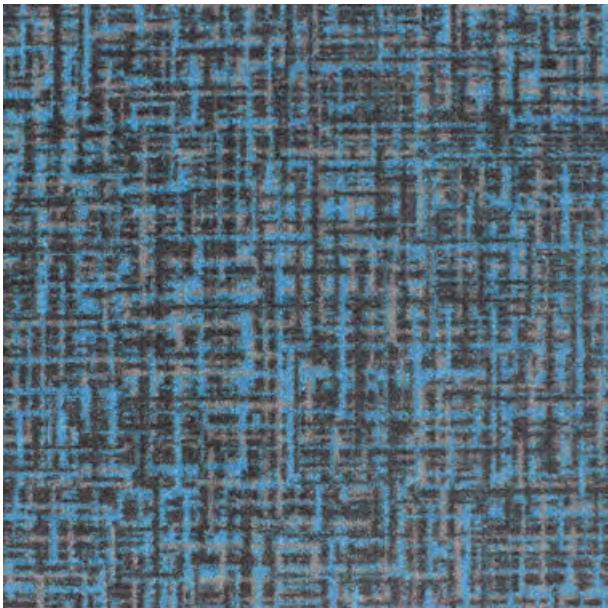
Woven | Clam 05914



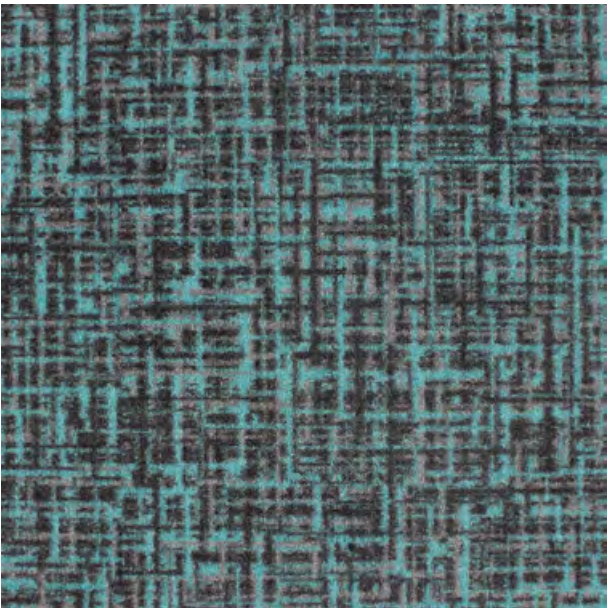
Rain Cloud 05901



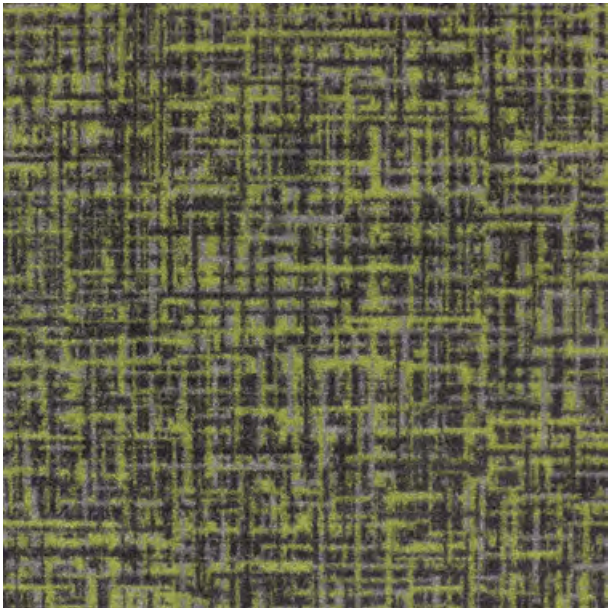
Newspaper 05908



Sky Blue 05909 22



Arctic 05918



Pear 05907 24



Cheese 05916 31



Hazel Wood 05913



Clam 05914



Terracotta 05917



Sunshine 05910 10



Red Ginger 05904 04



Blue Berry 05905 09

Product specifications :

Construction	Textured tufted loop pile
Face Fiber	100% Sorona® Fiber
Dyed Method	Dye Infusion
Gauge	1/11 inch
Total Thickness	9 mm
Backing	ECOTEC® recycled cushion backing
Total Density	165,000 /m²
Primary Backing	100% non woven synthetic
Tile Size	60 cm x 60 cm
Wear Classification	Hexapod ≥ 3 Heavy commercial
Electrostatic Propensity	(AATCC 134) less than 3.5kv
Indoor Air Quality	Singapore Green Building Council

Advantages :



Lifetime Stain Resistant



Exceptional Durability



Anti-Microbial



Ecotec Cushion Backing



Sound Absorbency

Permanent lifetime stain resistant is built into the core of the fiber. Just clean stubborn stains such as coffee or wine with cold water, reducing cost and time.

Exceptional durability. Sorona biopolymer molecular spring like structure, coupled with Ecotec cushion backing, allowing the fiber to bounce back into original shape after being compressed.

Sorona dries faster and absorbs 16 times less moisture than nylon. Resulting in excellent anti-microbial, anti-mold and fungi properties where the environment for bacteria to breed is exceptionally reduced.

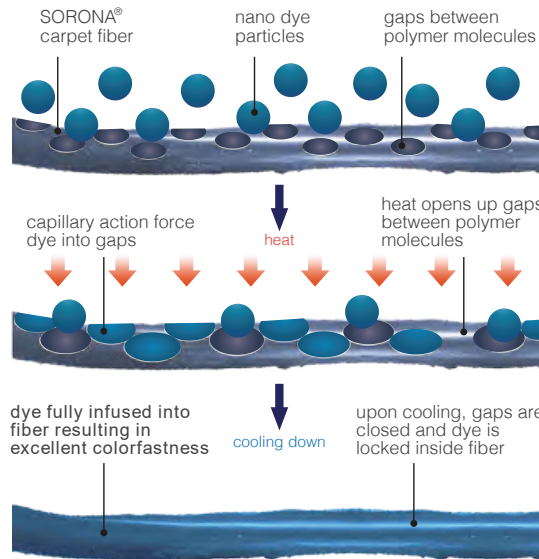
Ecotec cushion felt backing recycled from PET bottles offers superior walking comfort, and extends the life of the carpet by absorbing foot impact.

Ecotec cushion felt backing offers excellent sound absorbency, creating a better working and living environment.

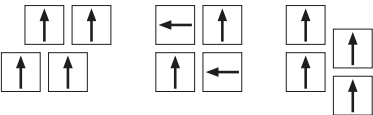


Goodrich Global
SINCE 1983

Dye Infusion



Installation Methods :



Specifications are based on average normal manufacturing tolerances, variations do not affect product performance.

As with all quality carpets , slight variations in color may occur from dye lot to dye lot.

Protective chair pads are recommended under office chairs with roller castors to preserve appearance retention and to avoid excessive wear.

