

# GOODRICH SORONA CARPET TILE

2025





**Sorona®** is made from 37% annually renewable plant-based polymer. It also uses 30%-40% less energy to produce and releases 56%-63% fewer greenhouse gas emissions as compared to the production of nylon.



Carpet Fiber Performance Comparison	SORONA®	NYLON 6,6	NYLON 6
Durability	★★★★★	★★★★★	★★★★★
Stain Resistance	★★★★★	★	★
Bleach Resistance	★★★★★	★	★
Soiling	★★★★★	★★★★★	★★
Static	★★★★★	★	★
Drying Time	★★★★★	★	★



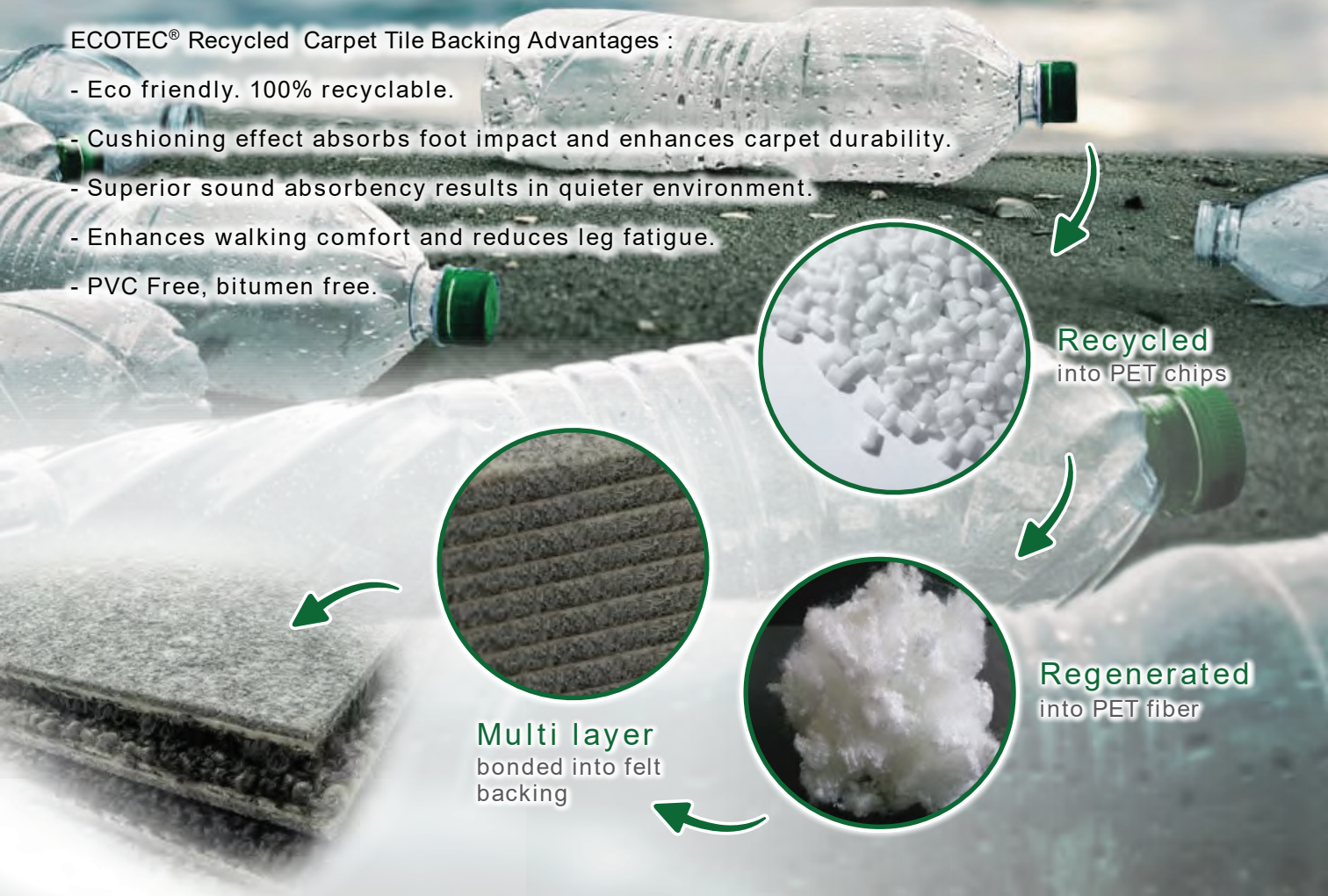
ECOTEC® (Recycled PET Cushion Backing)

Do our part to **remove plastics** from the  
ocean and landfills !

**10 MILLION** metric tons of **plastic** enters the  
ocean and landfills **each year**

ECOTEC® Recycled Carpet Tile Backing Advantages :

- Eco friendly. 100% recyclable.
- Cushioning effect absorbs foot impact and enhances carpet durability.
- Superior sound absorbency results in quieter environment.
- Enhances walking comfort and reduces leg fatigue.
- PVC Free, bitumen free.





GRAVEL

GRAVEL





Gravel Mix - Silver+Sandy Grey 700144+700150, Sandy Grey+Beige 700150+700147



Silver+Sandy Grey  
700144+700150 - A



Silver+Sandy Grey  
700144+700150 - B



Sandy Grey+Beige  
700150+700147 - B

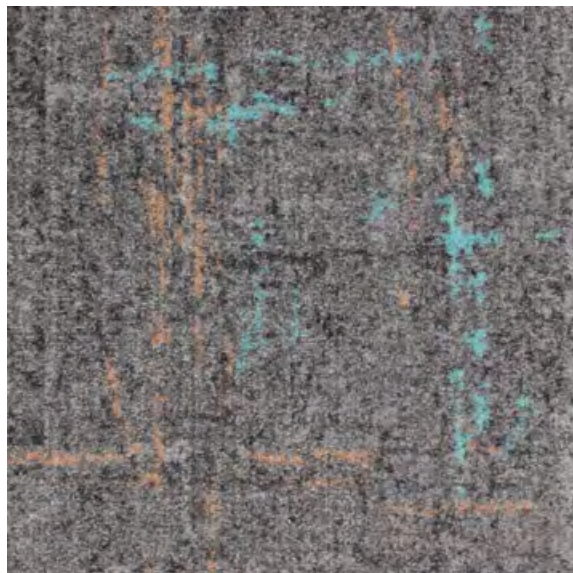


Sandy Grey+Beige  
700150+700147 - A

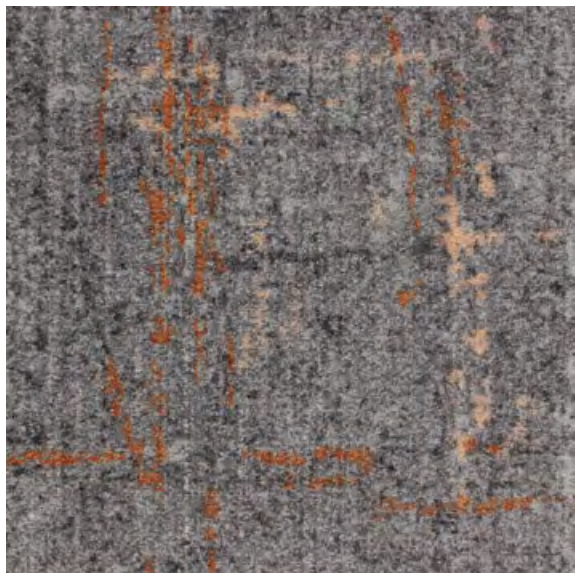


● Gravel - Silver 700144





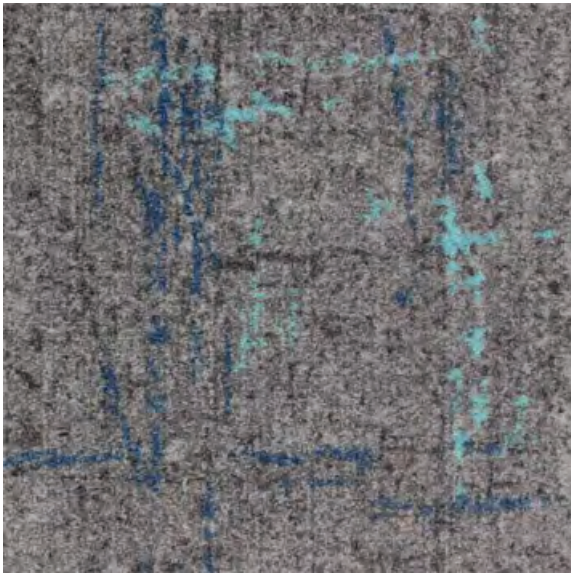
Natural+Sky Blue, Peach  
R700141+34, 33



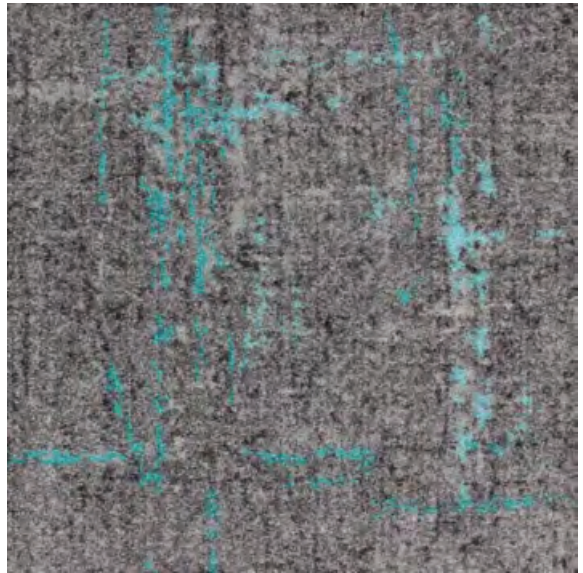
Natural+Rust, Peach  
R700141+01, 33



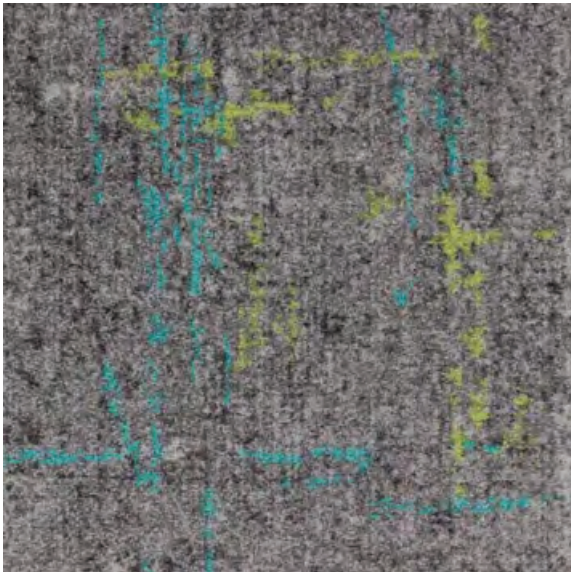




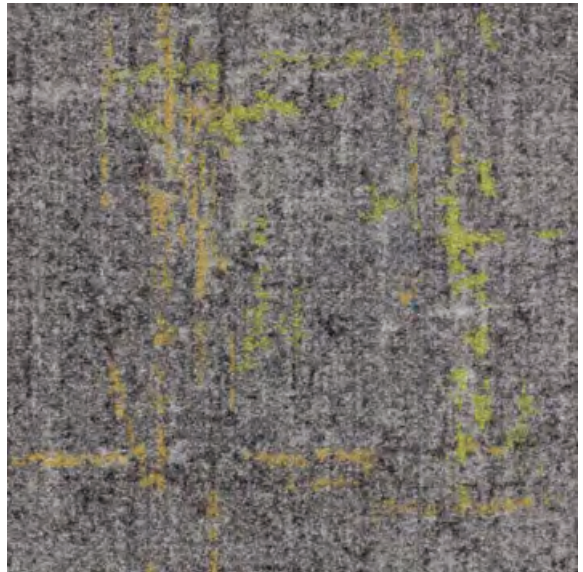
Natural+Atlantic, Sky Blue  
R700141+25, 34



Natural+Turquoise, Sky Blue  
R700141+02, 34

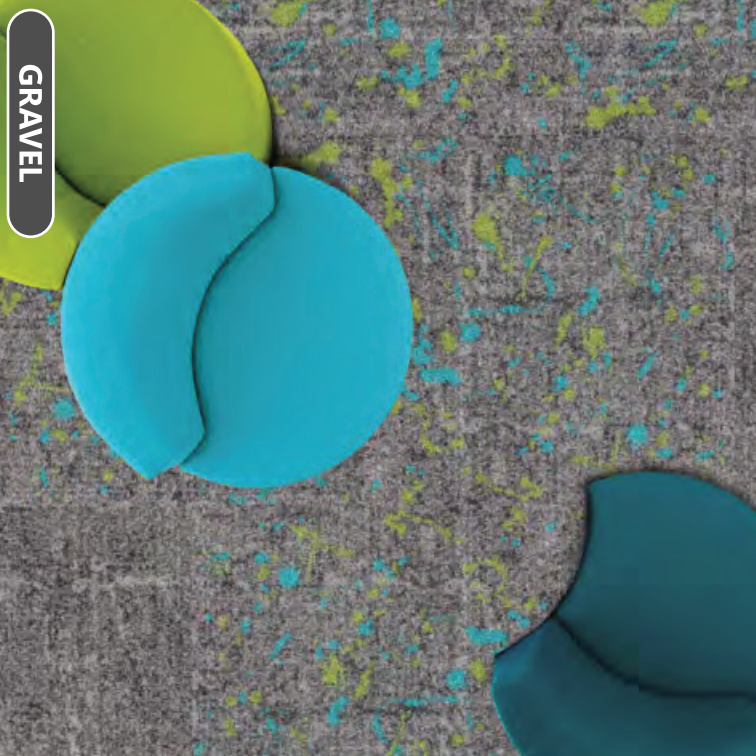


Natural+Turquoise, Moss  
R700141+02, 14

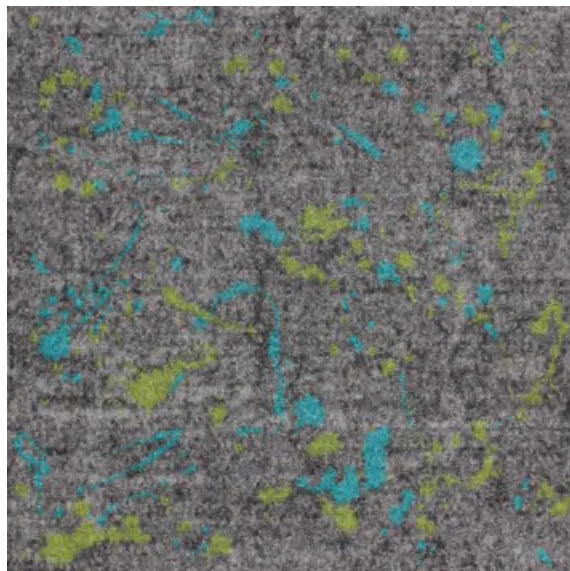


Natural+Meadow, Mustard  
R700141+24, 06

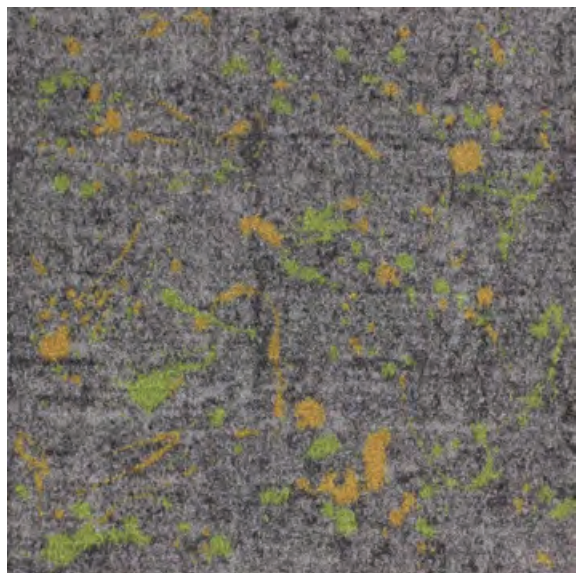




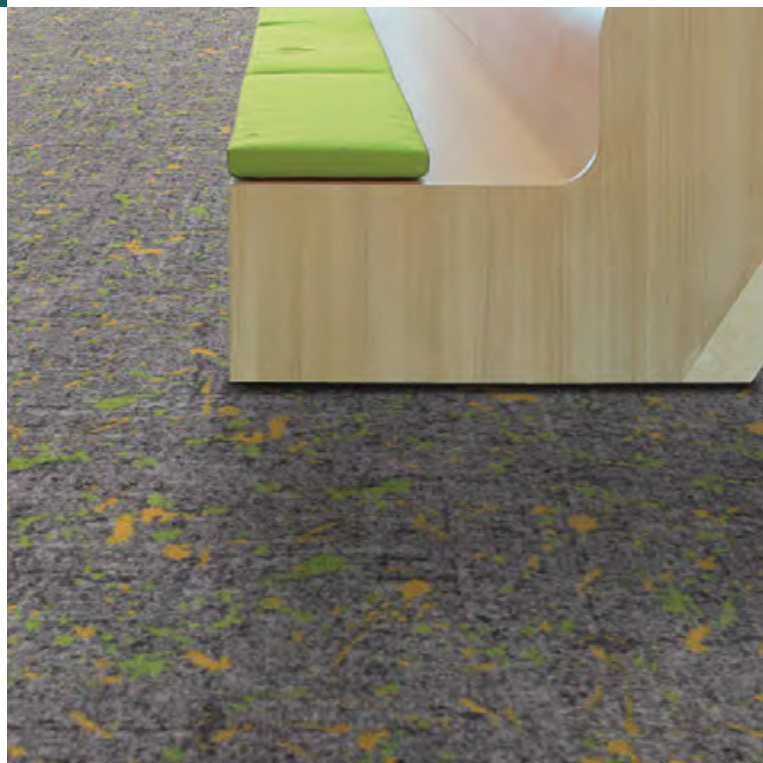
GRAVEL



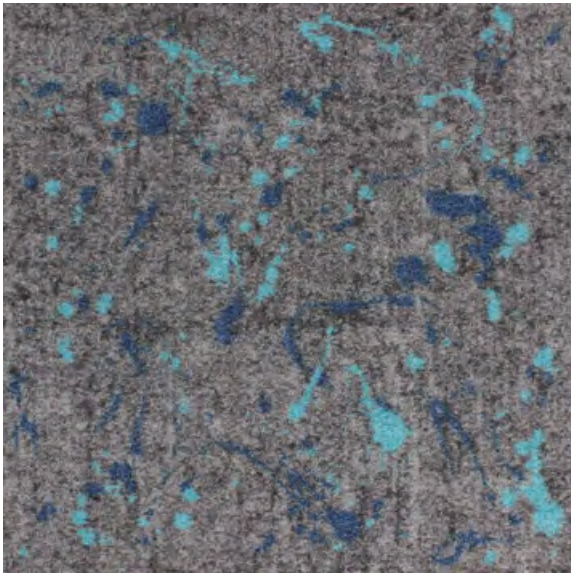
Natural+Turquoise, Moss  
S700141+02, 14



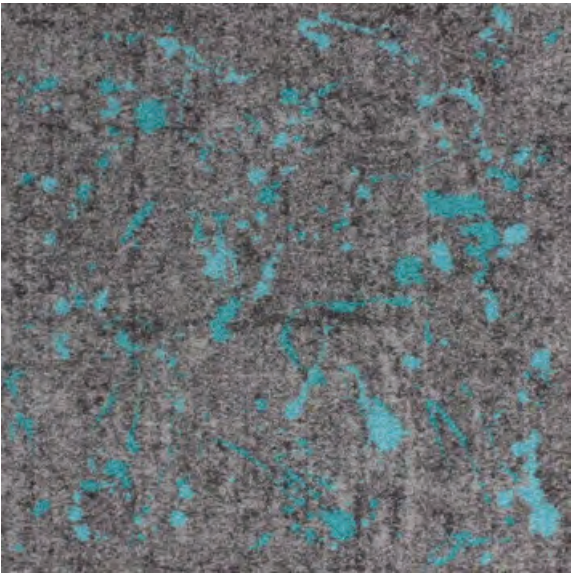
Natural+Moss, Mustard  
S700141+14, 06



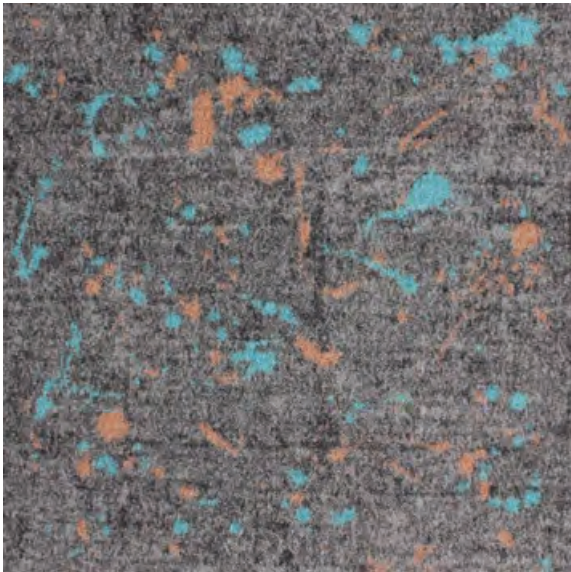




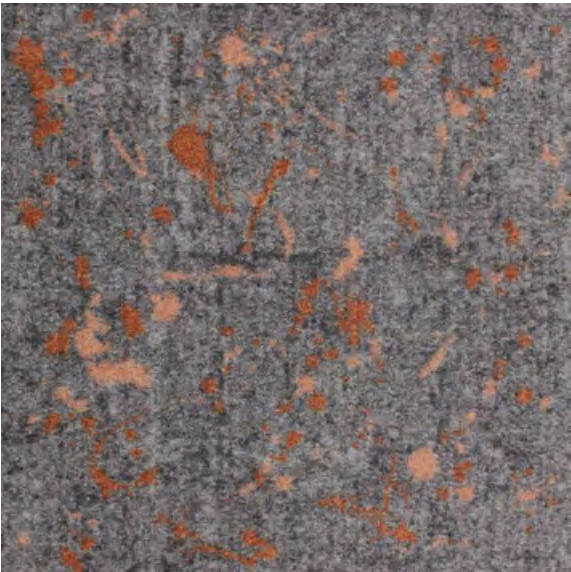
Natural+Atlantic, Sky Blue  
S700141+25, 34



Natural+Turquoise, Sky Blue  
S700141+02, 34



Natural+Sky Blue, Peach  
S700141+34, 33



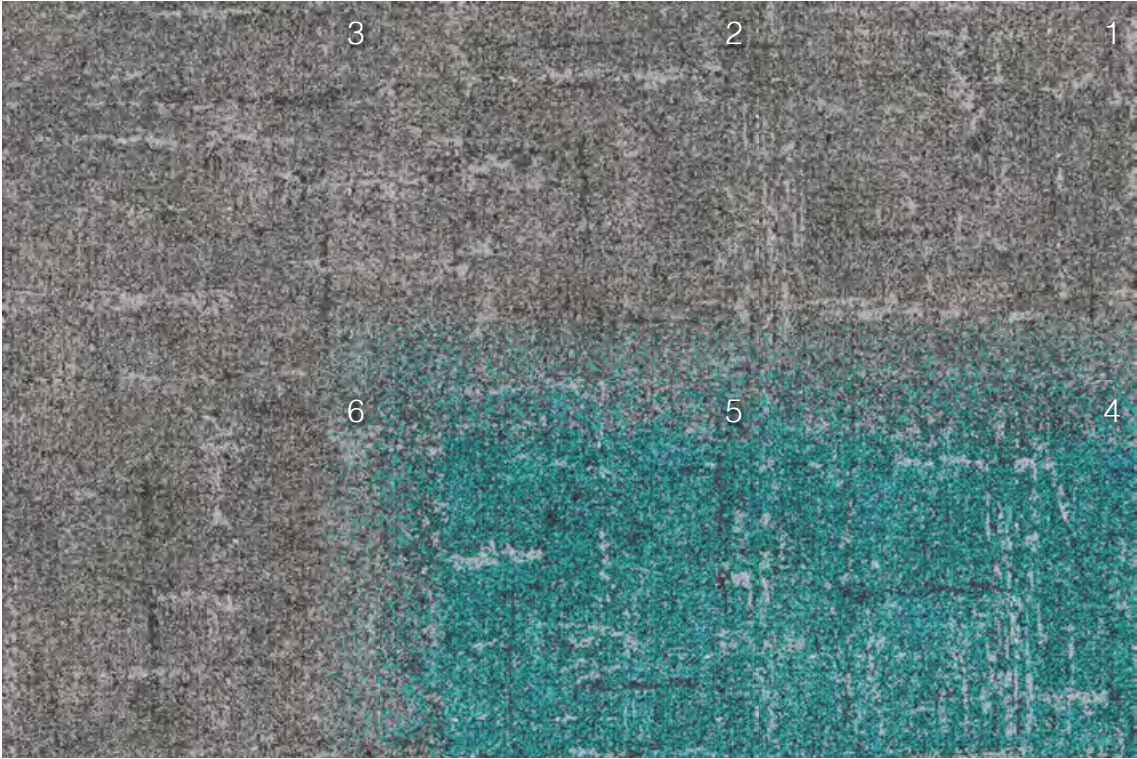
Natural+Rust, Peach  
S700141+01, 33





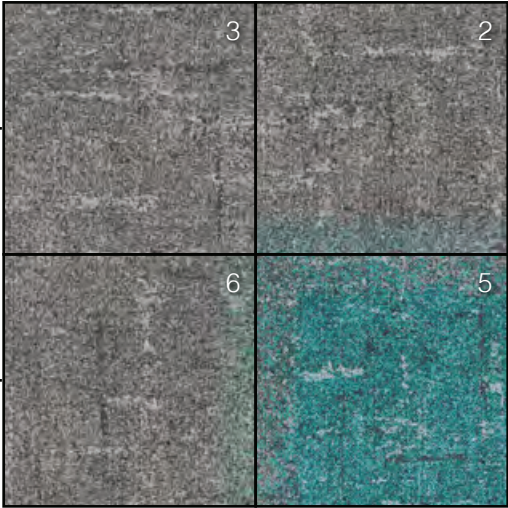


GRAVEL



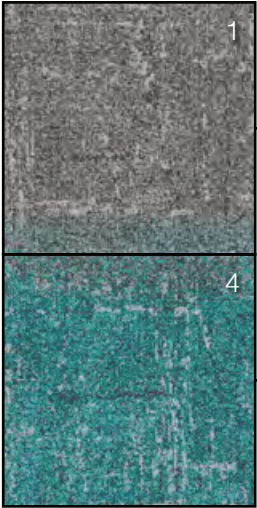
Natural+Gem  
(Mix Corner)

*Tile number*  
2, 3, 5, 6



Natural+Gem  
(Mix)

*Tile number*  
1, 4

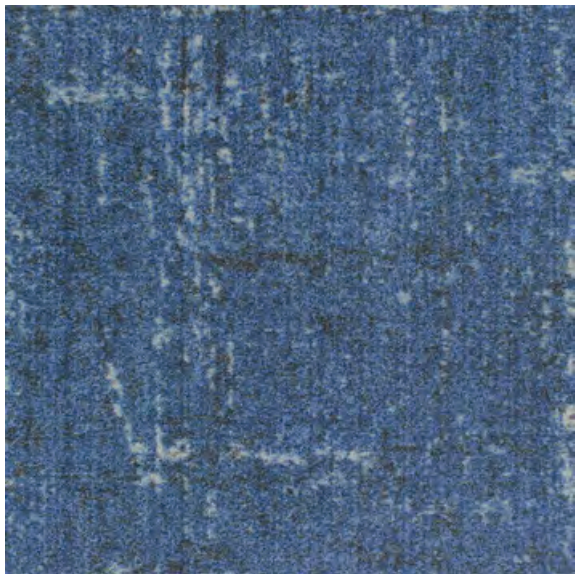


Gravel Mix In a slab

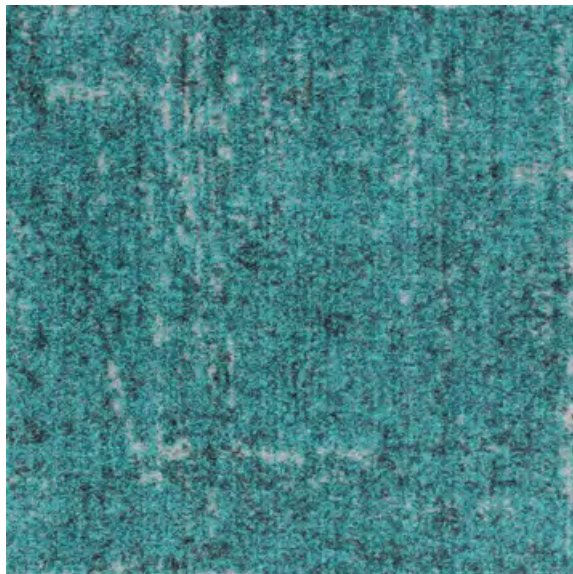




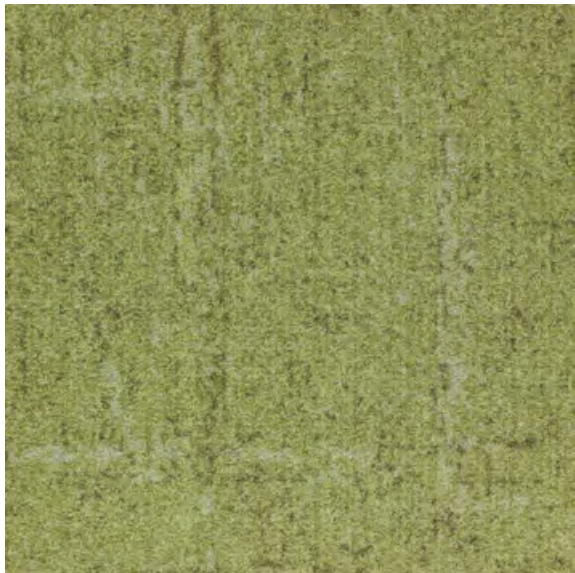




Ocean 700153



Gem 700152



Pine 700149

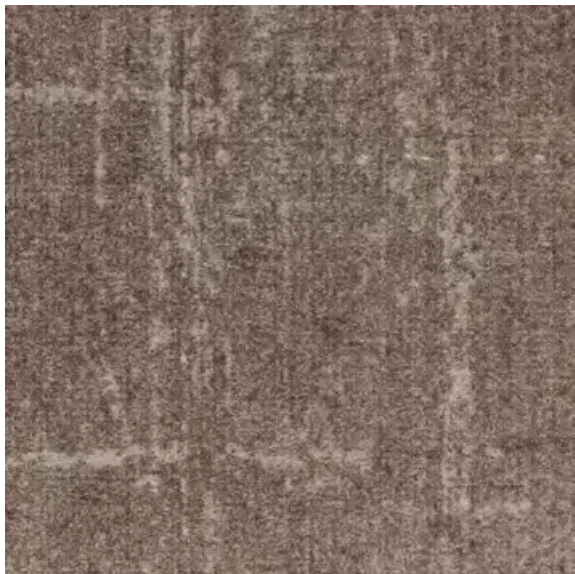


Orange Squash 700151









Root 700148



Beige 700147



Sandy Grey 700150

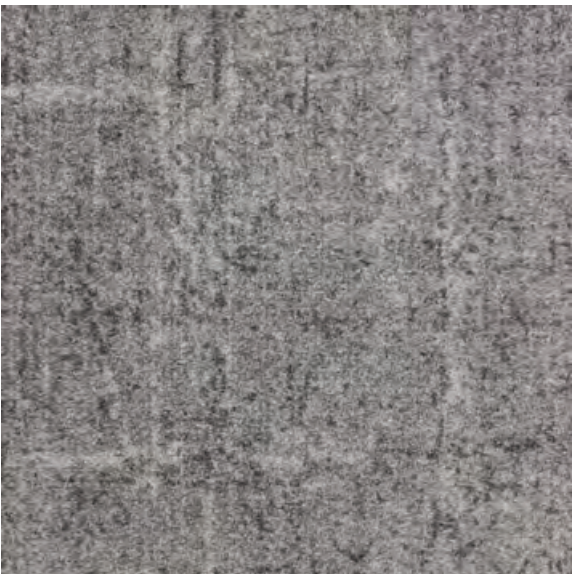


Grey 700145





Natural 700141



Silver 700144



## Product specifications :

Construction

Face Fiber

Textured tufted loop pile

Now available in both fibers :

- 100% **Sorona®** Fiber

or

- 100% **ReVi** (HD PBT - High density polybutylene terephthalate)

Dyed Method

Dye Infusion

Total Thickness

8.5 mm

Total Density

200,000 /m<sup>2</sup>

Backing

**ECOTEC®** (recycled PET cushion backing)

Tile Size

60 cm x 60 cm

Wear Classification

Hexapod ≥ 3.5 Heavy commercial

Flammability

≥ 0.45 (Class I)

Electrostatic Propensity

AATCC 134 ≤ 3kv

Colorfastness To Light

AATCC 16E ≥ 4

Noise Reduction Coefficient

ASTM C423-22 NRC 0.25 or higher

Indoor Air Quality

Singapore Green Building Council

## Advantages :



Lifetime Stain Resistant



Exceptional Durability



Anti-Microbial



Ecotec Cushion Backing



Sound Absorbency

Permanent lifetime stain resistant is built into the core of the fiber. Just clean stubborn stains such as coffee with cold water, reducing cost and time.

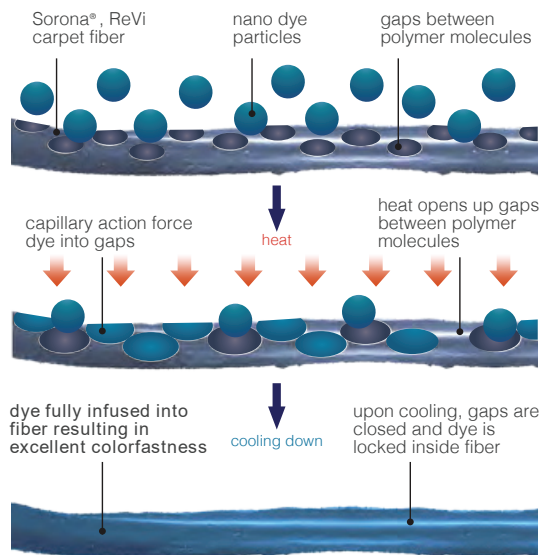
Exceptional durability. Sorona and ReVi biopolymer molecular spring like structure, coupled with Ecotec cushion backing, allowing the fiber to bounce back into original shape after being compressed.

Sorona and ReVi dries faster and absorbs 16 times less moisture than nylon. Resulting in excellent anti-microbial, anti-mold and fungi properties where the environment for bacteria to breed is exceptionally reduced.

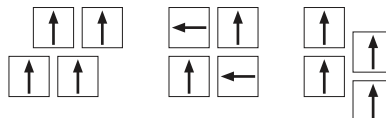
Ecotec cushion felt backing recycled from PET bottles offers superior walking comfort, and extends the life of the carpet by absorbing foot impact.

Ecotec cushion felt backing offers excellent sound absorbency, creating a better working and living environment.

## Dye Infusion



## Installation Methods :



Specifications are based on average normal manufacturing tolerances, variations do not affect product performance.

As with all quality carpets, slight variations in color may occur from dye lot to dye lot.

Protective chair pads are recommended under office chairs with roller castors to preserve appearance retention and to avoid excessive wear.

For end of life disposal, please refer to your country's disposal regulation.





IN THE PARK

# IN THE PARK





IN THE PARK

Sand Pit - Garden Grey+Turquoise 700502+02 , Botany - Garden Grey+Atlantic 700602+25









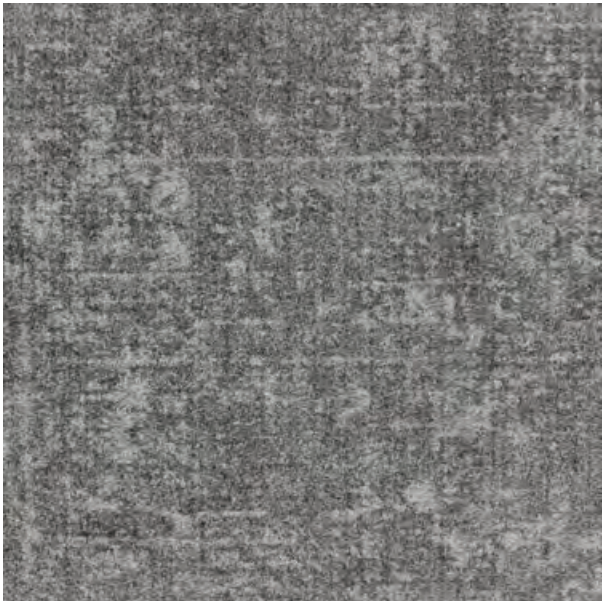




Sand Pit - Stormy Sky 700501



Sand Pit - Garden Grey 700502



Sand Pit - Smoky Grey 700505



Sand Pit - Moondust 700506

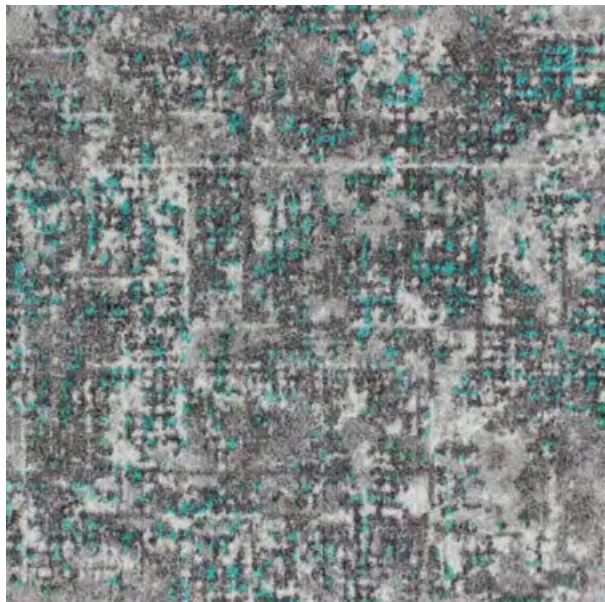




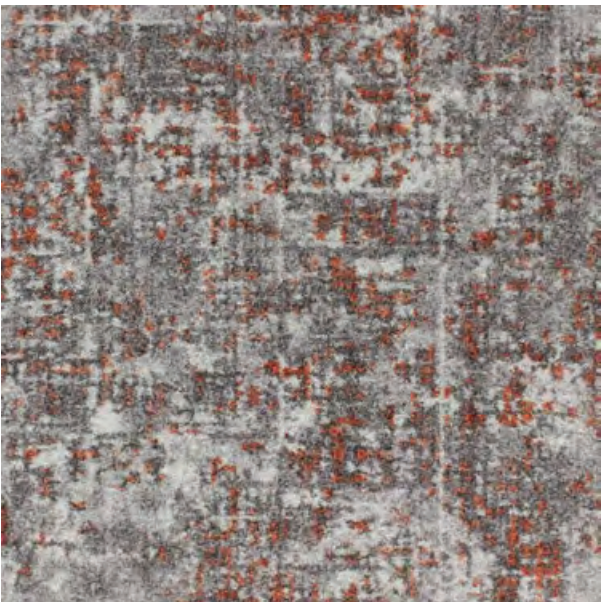
Sand Pit - Garden Grey+Warm Purple  
700502+09



Sand Pit - Garden Grey+Atlantic 700502+25



Sand Pit - Garden Grey+Turquoise  
700502+02



Sand Pit - Garden Grey+Red Soil 700502+04





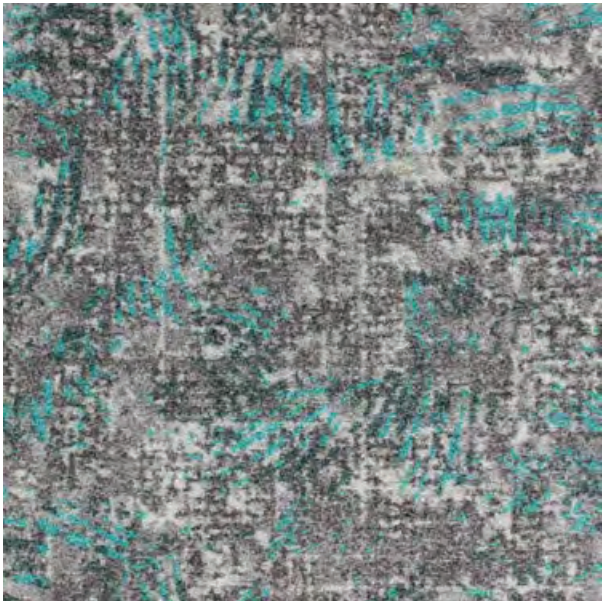
Botany - Grey Owl 700601



Botany - Garden Grey+Warm Purple  
700602+09



Botany - Garden Grey+Atlantic 700602+25



Botany - Garden Grey+Turquoise 700602+02









IN THE PARK

Sand Pit - Pale Oak 700503 , Botany - Pale Oak+Cherry Red 700603+28





IN THE PARK

Sand Pit - Pale Oak 700503 , Pale Oak+Rust 700503+01









Sand Pit - Pale Oak 700503



Sand Pit - Pale Oak+Cherry Red 700503+28



Sand Pit - Pale Oak+Rust 700503+01



Sand Pit - Pale Oak+Olive 700503+23





Botany - Moonshine 700605



Botany - Pale Oak+Cherry Red 700603+28



Botany - Pale Oak+Rust 700603+01



Botany - Pale Oak+Olive 700603+23













IN THE PARK

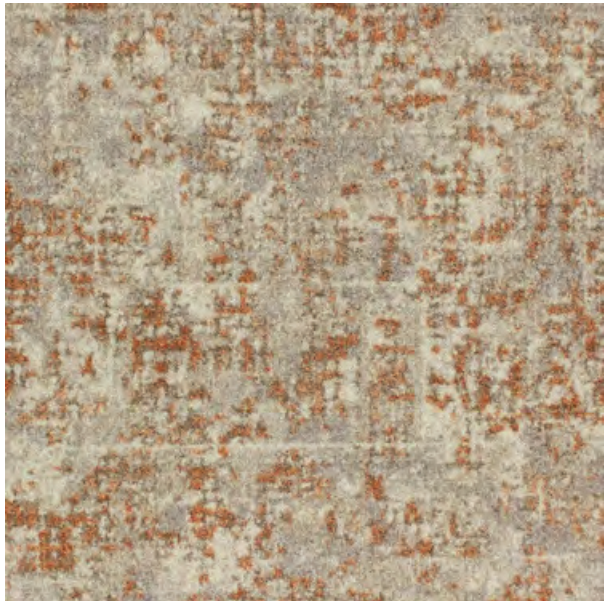




Sand Pit - White Sand 700504



Sand Pit - White Sand+Red Soil 700504+04



Sand Pit - White Sand+Rust 700504+01



Sand Pit - White Sand+Sunset 700504+10





Botany - Horizon 700606



Botany - White Sand+Red Soil 700604+04



Botany - White Sand+Rust 700604+01



Botany - White Sand+Sunset 700604+10



Product specifications :

Construction	Textured tufted loop pile
Face Fiber	Now available in both fibers : - 100% <b>Sorona®</b> Fiber or - 100% <b>ReVi</b> (HD PBT - High density polybutylene terephthalate)
Dyed Method	Dye Infusion
Total Thickness	8.5 mm
Total Density	200,000 /m²
Backing	<b>ECOTEC®</b> (recycled PET cushion backing)
Tile Size	60 cm x 60 cm
Wear Classification	Hexapod ≥ 3.5 Heavy commercial
Flammability	≥ 0.45 (Class I)
Electrostatic Propensity	AATCC 134 ≤ 3kv
Colorfastness To Light	AATCC 16E ≥ 4
Noise Reduction Coefficient	ASTM C423-22 NRC 0.25 or higher
Indoor Air Quality	Singapore Green Building Council

Advantages :



Lifetime Stain Resistant



Exceptional Durability



Anti-Microbial



Ecotec Cushion Backing



Sound Absorbency

Permanent lifetime stain resistant is built into the core of the fiber. Just clean stubborn stains such as coffee with cold water, reducing cost and time.

Exceptional durability. Sorona and ReVi biopolymer molecular spring like structure, coupled with Ecotec cushion backing, allowing the fiber to bounce back into original shape after being compressed.

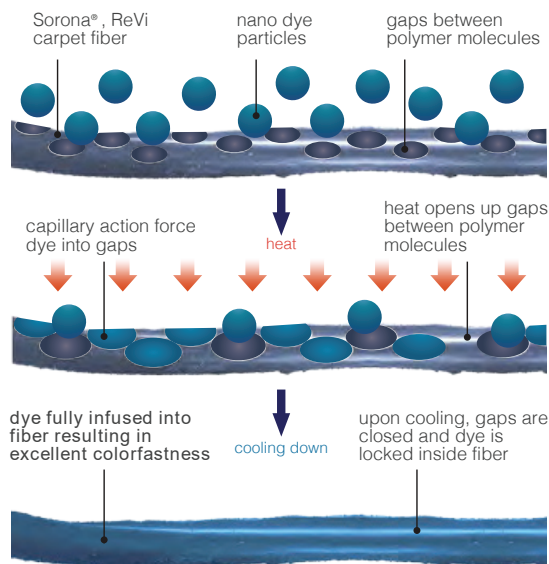
Sorona and ReVi dries faster and absorbs 16 times less moisture than nylon. Resulting in excellent anti-microbial, anti-mold and fungi properties where the environment for bacteria to breed is exceptionally reduced.

Ecotec cushion felt backing recycled from PET bottles offers superior walking comfort, and extends the life of the carpet by absorbing foot impact.

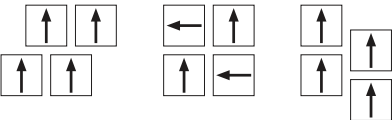
Ecotec cushion felt backing offers excellent sound absorbency, creating a better working and living environment.



Dye Infusion



Installation Methods :



Specifications are based on average normal manufacturing tolerances, variations do not affect product performance. As with all quality carpets , slight variations in color may occur from dye lot to dye lot.

Protective chair pads are recommended under office chairs with roller castors to preserve appearance retention and to avoid excessive wear.

For end of life disposal, please refer to your country's disposal regulation.



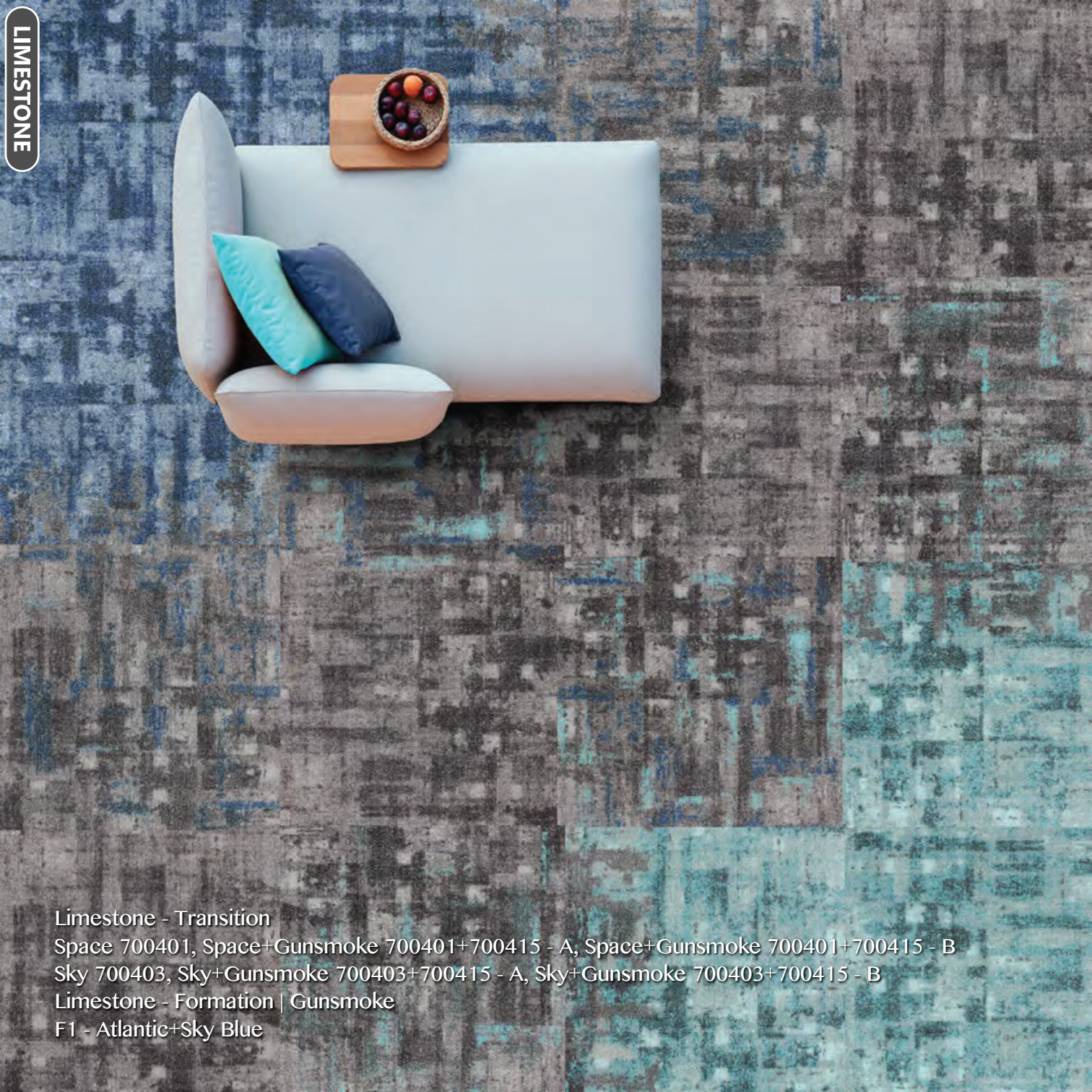


LIMESTONE



# LIMESTONE





LIMESTONE

Limestone - Transition  
Space 700401, Space+Gunsmoke 700401+700415 - A, Space+Gunsmoke 700401+700415 - B  
Sky 700403, Sky+Gunsmoke 700403+700415 - A, Sky+Gunsmoke 700403+700415 - B  
Limestone - Formation | Gunsmoke  
F1 - Atlantic+Sky Blue



Limestone - Transition  
Grey Sky 700416, Grey Sky+Black 700416+700414 - A, Grey Sky+Black 700416+700414 - B





Limestone - Transition  
Army 700405, Army+Gunsmoke 700405+700415 - A, Army+Gunsmoke 700405+700415 - B



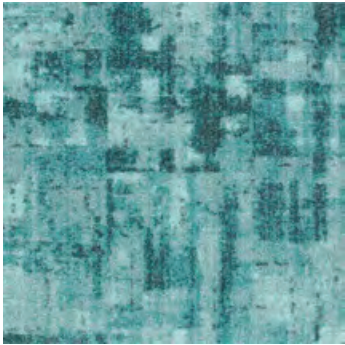


Limestone - Transition  
Royal Beige 700412, Royal Beige+Mud 700412+700413 - A, Royal Beige+Mud 700412+700413 - B





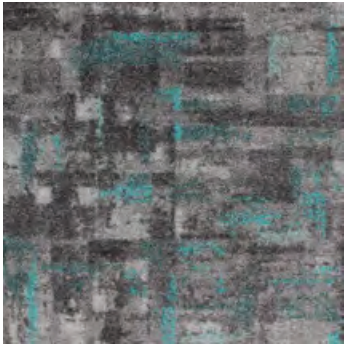
Limestone - Transition  
Tiffany 700402, Tiffany+Gunsmoke 700402+700415 - A, Tiffany+Gunsmoke 700402+700415 - B



Tiffany 700402

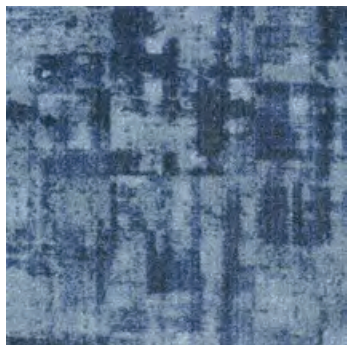


Tiffany+Gunsmoke  
700402+700415 - A

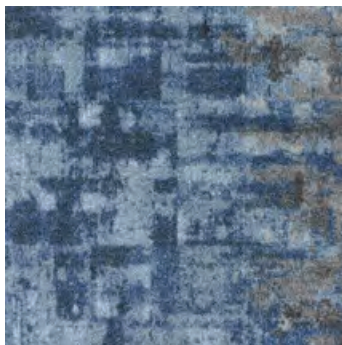


Tiffany+Gunsmoke  
700402+700415 - B





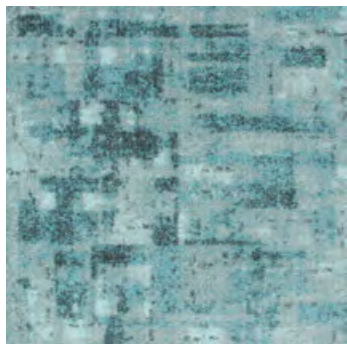
Space 700401



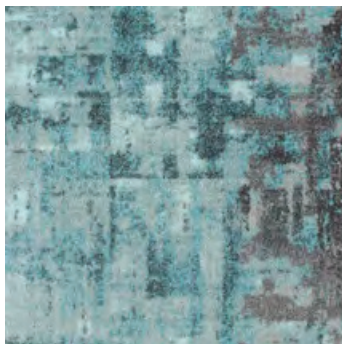
Space+Gunsmoke  
700401+700415 - A



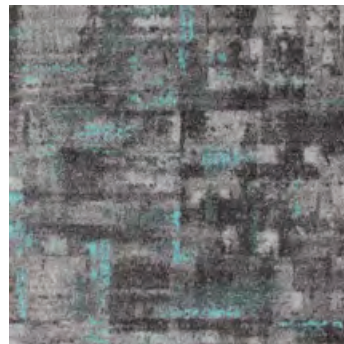
Space+Gunsmoke  
700401+700415 - B



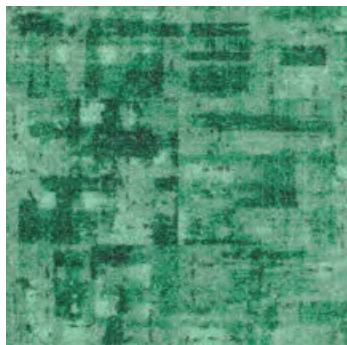
Sky 700403



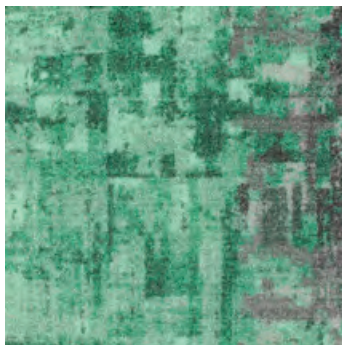
Sky+Gunsmoke  
700403+700415 - A



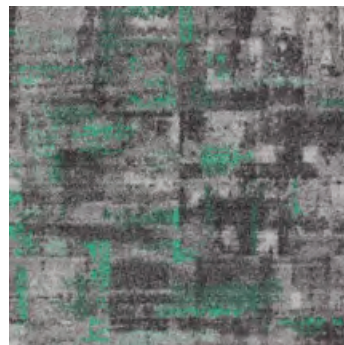
Sky+Gunsmoke  
700403+700415 - B



Sea 700404

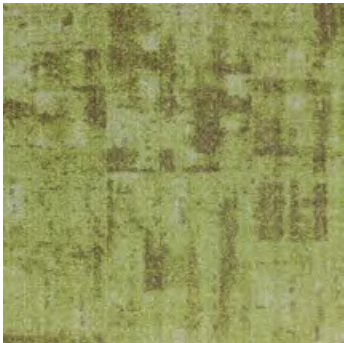


Sea+Gunsmoke  
700404+700415 - A

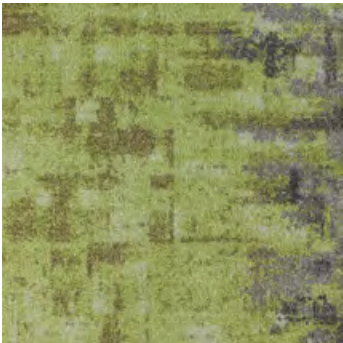


Sea+Gunsmoke  
700404+700415 - B

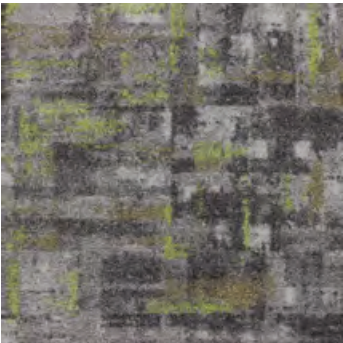




Army 700405



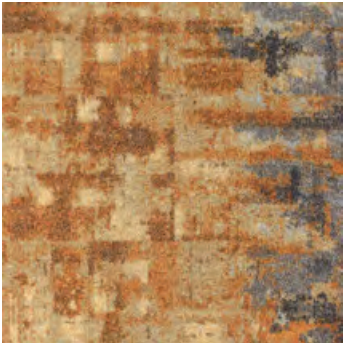
Army+Gunsmoke  
700405+700415 - A



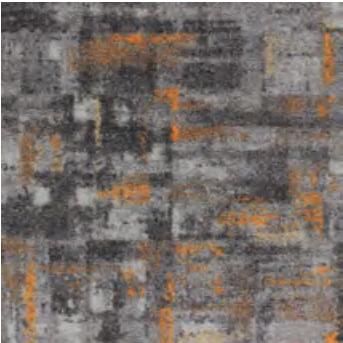
Army+Gunsmoke  
700405+700415 - B



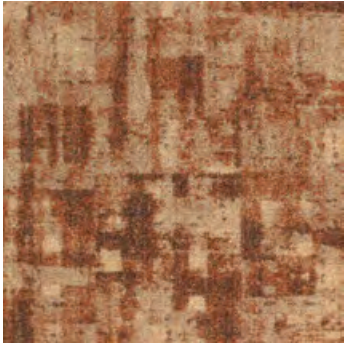
Flaming 700406



Flaming+Gunsmoke  
700406+700415 - A



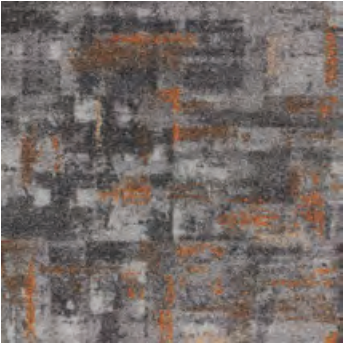
Flaming+Gunsmoke  
700406+700415 - B



Cider 700407



Cider+Gunsmoke  
700407+700415 - A



Cider+Gunsmoke  
700407+700415 - B

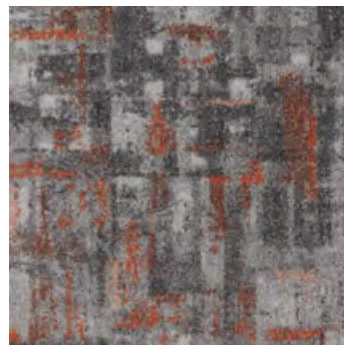




Fire 700408



Fire+Gunsmoke  
700408+700415 - A



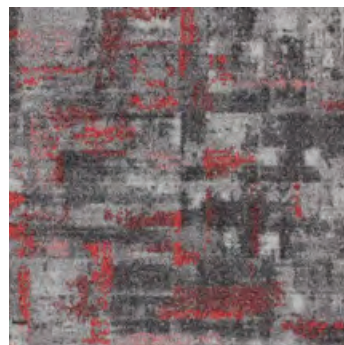
Fire+Gunsmoke  
700408+700415 - B



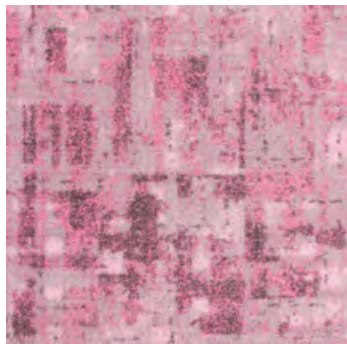
Wine 700409



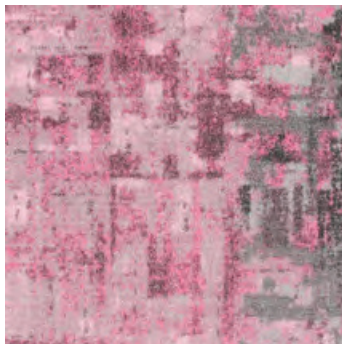
Wine+Gunsmoke  
700409+700415 - A



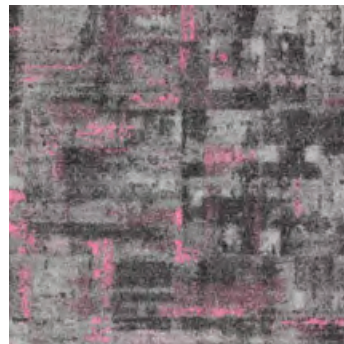
Wine+Gunsmoke  
700409+700415 - B



Charm 700410

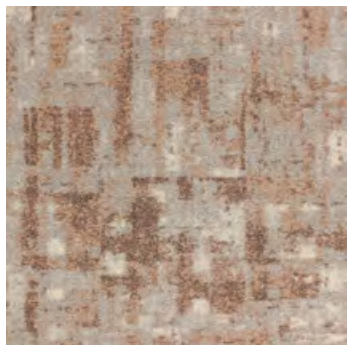


Charm+Gunsmoke  
700410+700415 - A



Charm+Gunsmoke  
700410+700415 - B





Pastel Peach 700411



Pastel Peach+Gunsmoke  
700411+700415 - A



Pastel Peach+Gunsmoke  
700411+700415 - B



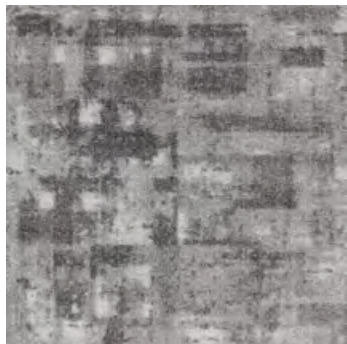
Royal Beige 700412



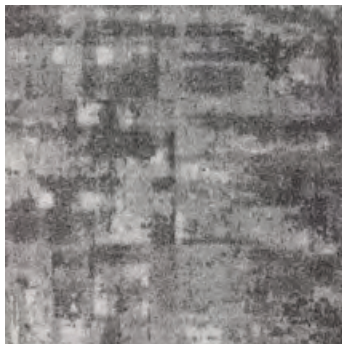
Royal Beige+Mud  
700412+700413 - A



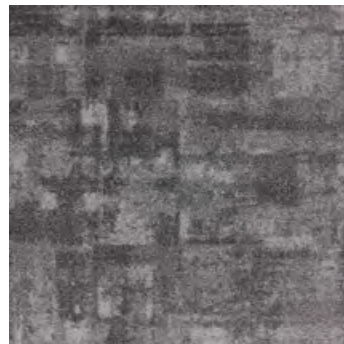
Royal Beige+Mud  
700412+700413 - B



Grey Sky 700416



Grey Sky+Black  
700416+700414 - A



Grey Sky+Black  
700416+700414 - B

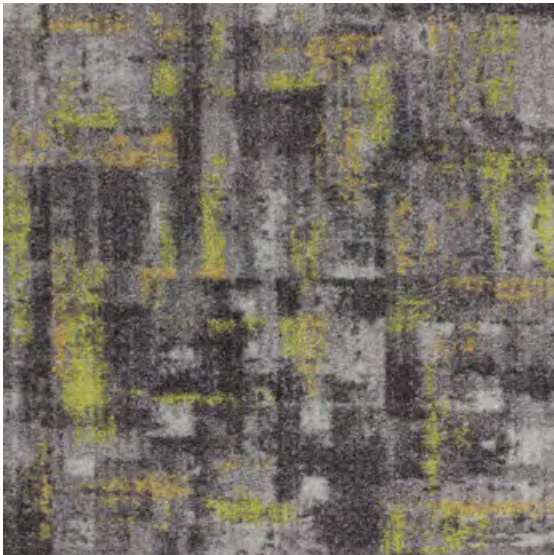




LIMESTONE

Limestone - Formation | Gunsmoke  
F7 - Rust+Peach





F5 - Meadow+Mustard



F6 - Mustard+Rust



F7 - Rust+Peach

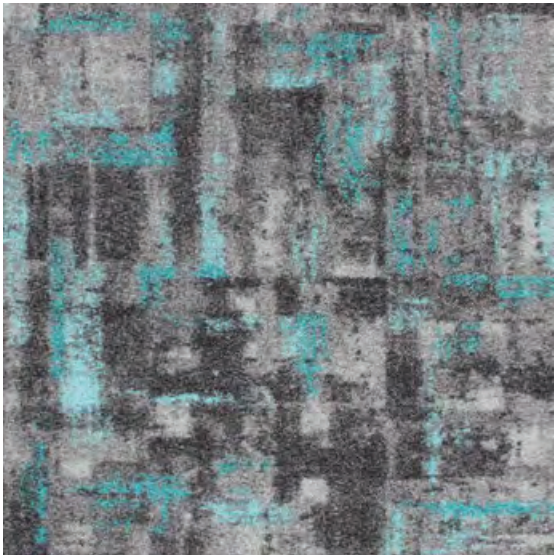


F8 - Peach+Sky Blue

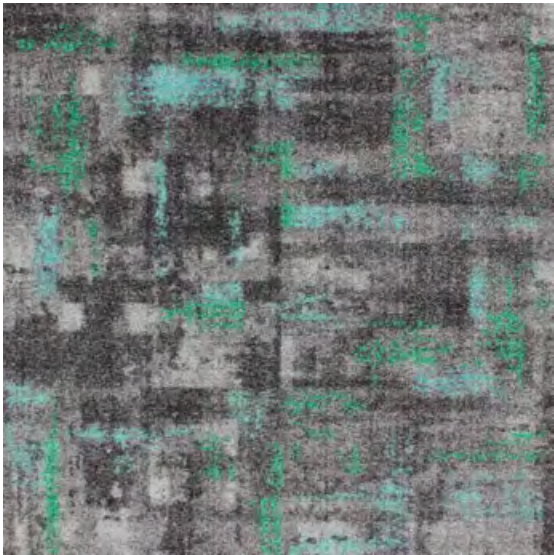




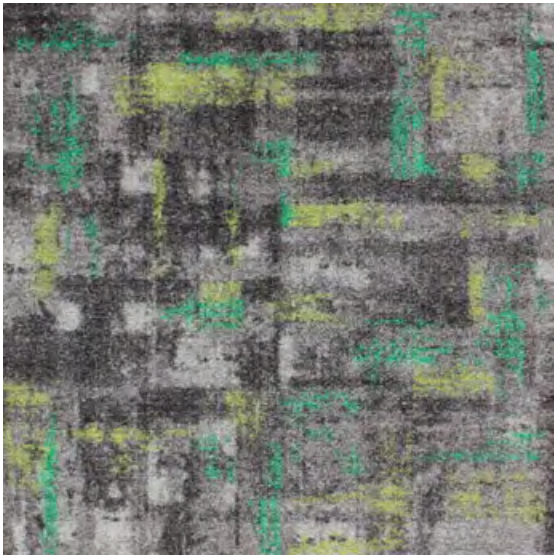
F1 - Atlantic+Sky Blue



F2 - Sky Blue+Turquoise

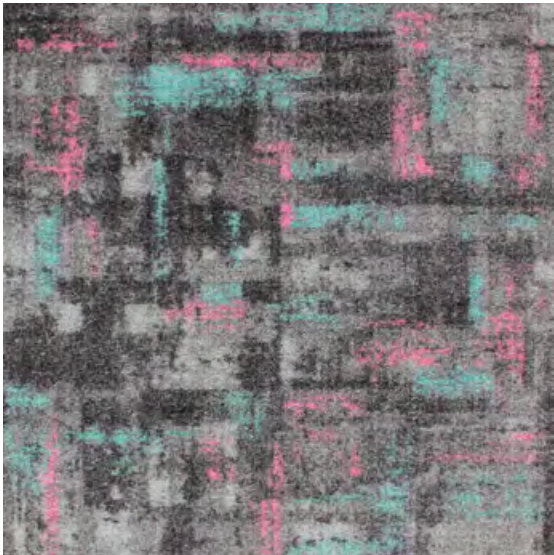


F3 - Emerald+Glacier

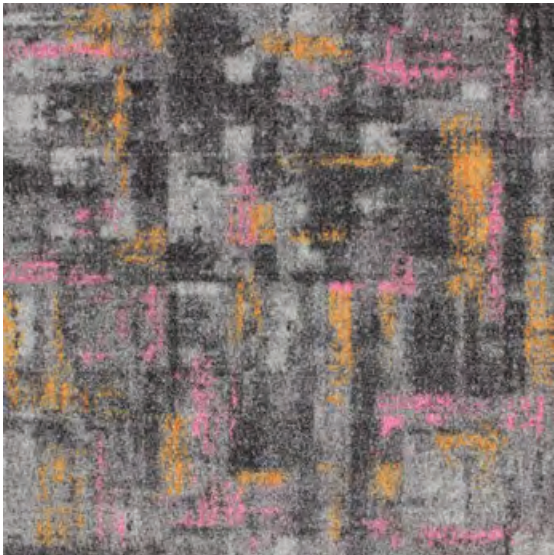


F4 - Emerald+Moss

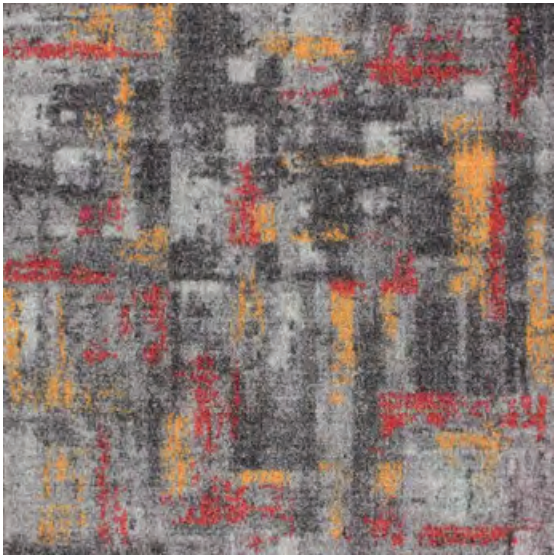




F9 - Pink+Glacier



F10 - Pink+Sunset

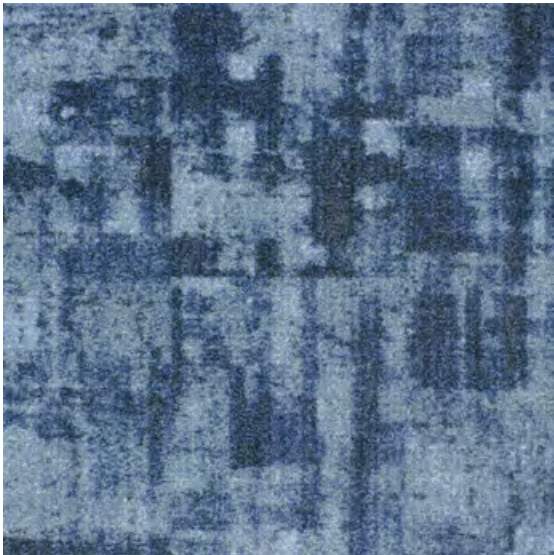


F11 - Cherry Red+Sunset

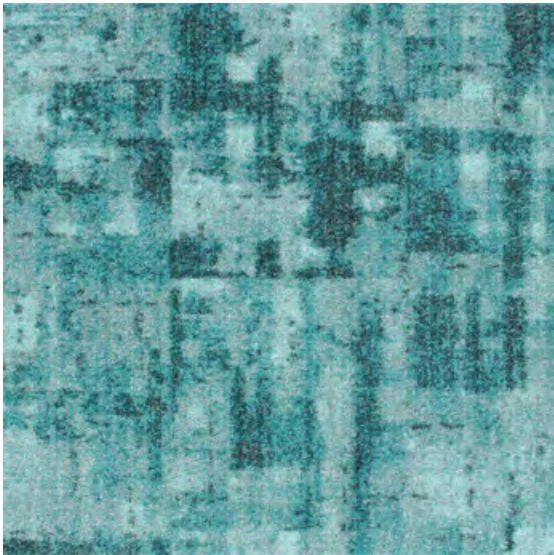


F12 - Cherry Red+Pink

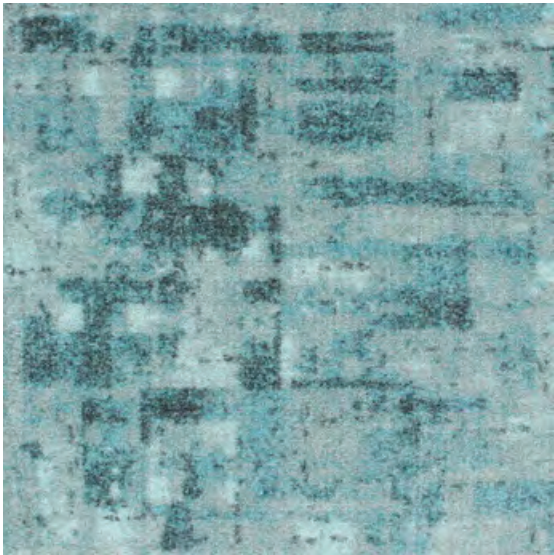




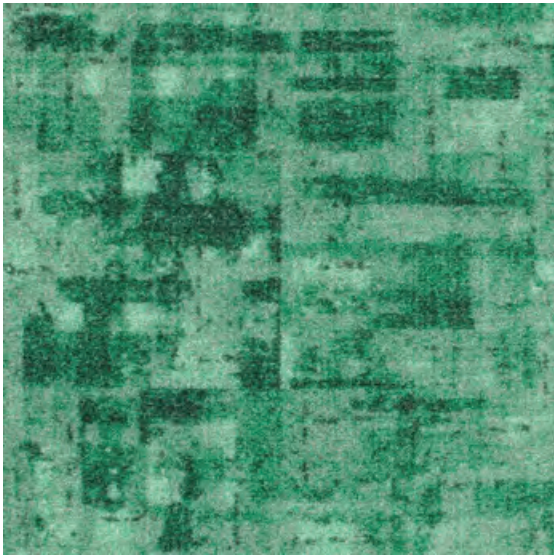
Space 700401



Tiffany 700402

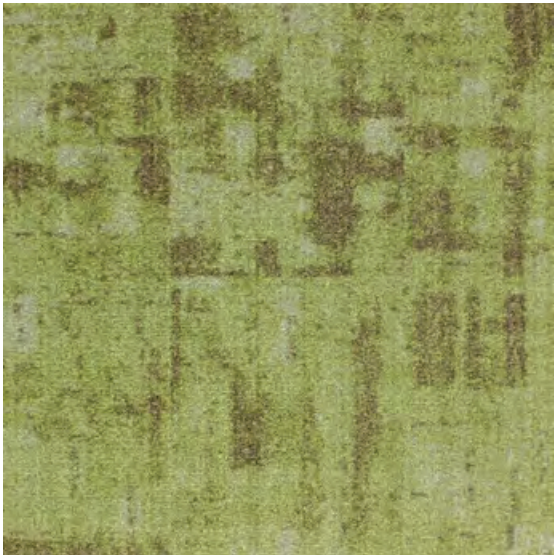


Sky 700403

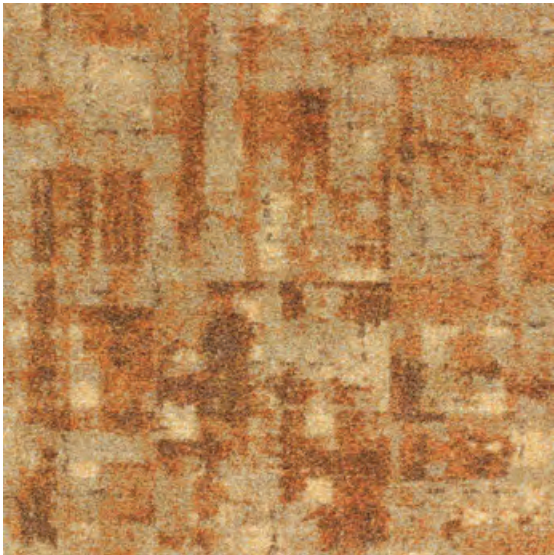


Sea 700404

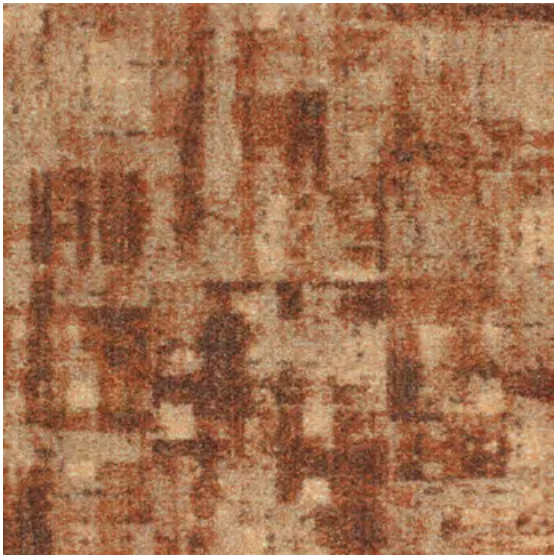




Army 700405



Flaming 700406

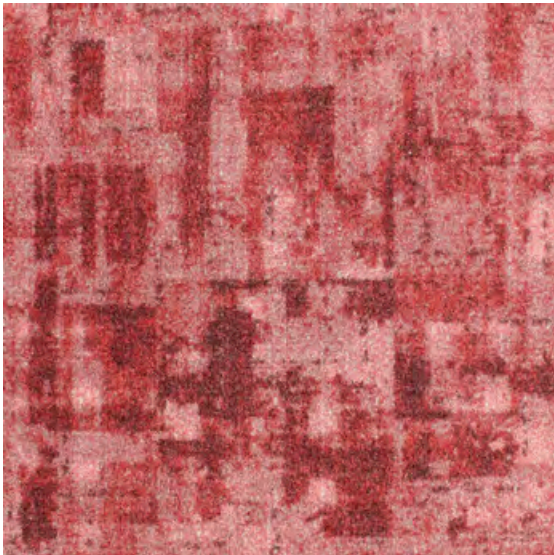


Cider 700407

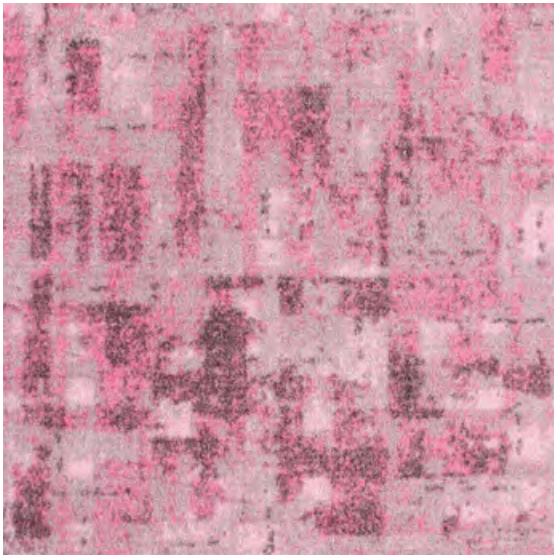


Fire 700408





Wine 700409



Charm 700410



Pastel Peach 700411

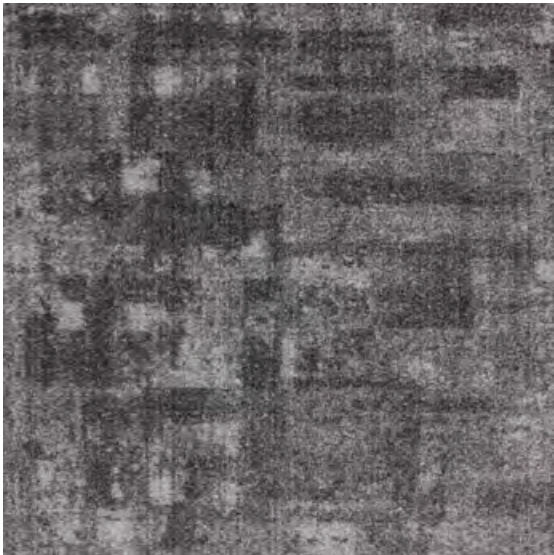


Royal Beige 700412

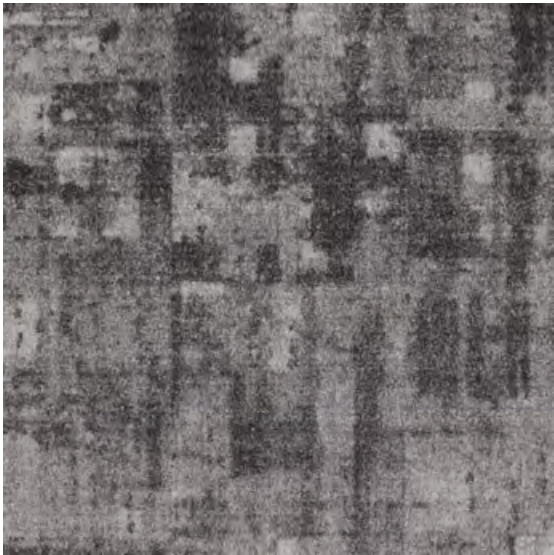




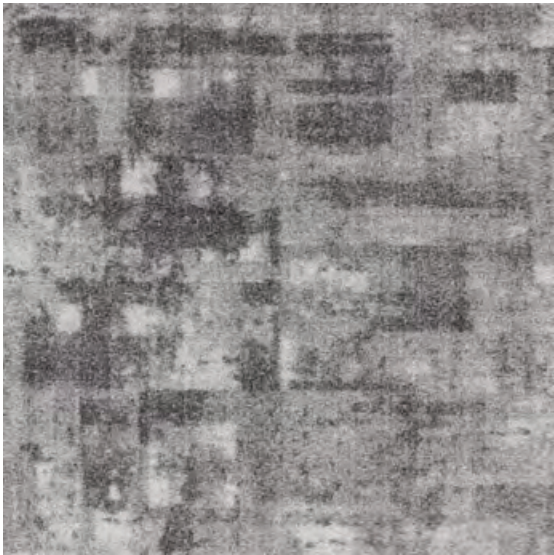
Mud 700413



Black 700414



Gunsmoke 700415



Grey Sky 700416



Product specifications :

Construction	Textured tufted loop pile
Face Fiber	Now available in both fibers : - 100% <b>Sorona®</b> Fiber or - 100% <b>ReVi</b> (HD PBT - High density polybutylene terephthalate)
Dyed Method	Dye Infusion
Total Thickness	8.5 mm
Total Density	200,000 /m²
Backing	<b>ECOTEC®</b> (recycled PET cushion backing)
Tile Size	60 cm x 60 cm
Wear Classification	Hexapod ≥ 3.5 Heavy commercial
Flammability	≥ 0.45 (Class I)
Electrostatic Propensity	AATCC 134 ≤ 3kv
Colorfastness To Light	AATCC 16E ≥ 4
Noise Reduction Coefficient	ASTM C423-22 NRC 0.25 or higher
Indoor Air Quality	Singapore Green Building Council

Advantages :



Lifetime Stain Resistant



Exceptional Durability



Anti-Microbial



Ecotec Cushion Backing



Sound Absorbency

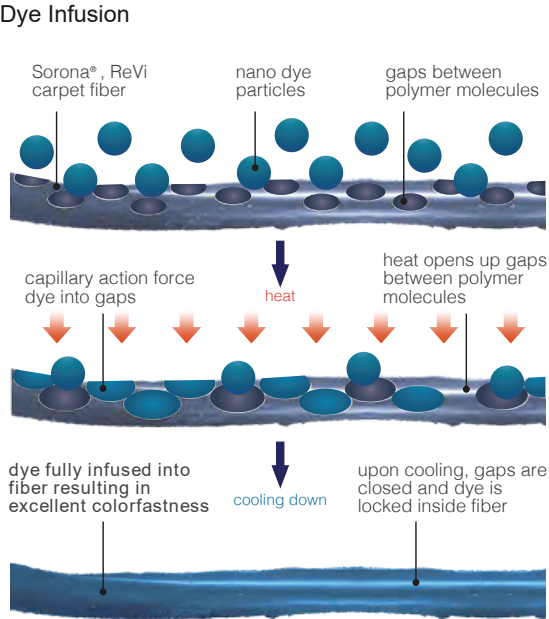
Permanent lifetime stain resistant is built into the core of the fiber. Just clean stubborn stains such as coffee with cold water, reducing cost and time.

Exceptional durability. Sorona and ReVi biopolymer molecular spring like structure, coupled with Ecotec cushion backing, allowing the fiber to bounce back into original shape after being compressed.

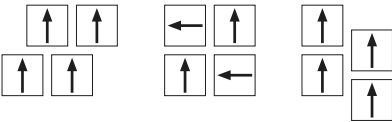
Sorona and ReVi dries faster and absorbs 16 times less moisture than nylon. Resulting in excellent anti-microbial, anti-mold and fungi properties where the environment for bacteria to breed is exceptionally reduced.

Ecotec cushion felt backing recycled from PET bottles offers superior walking comfort, and extends the life of the carpet by absorbing foot impact.

Ecotec cushion felt backing offers excellent sound absorbency, creating a better working and living environment.



Installation Methods :



Specifications are based on average normal manufacturing tolerances, variations do not affect product performance. As with all quality carpets, slight variations in color may occur from dye lot to dye lot.

Protective chair pads are recommended under office chairs with roller castors to preserve appearance retention and to avoid excessive wear.

For end of life disposal, please refer to your country's disposal regulation.





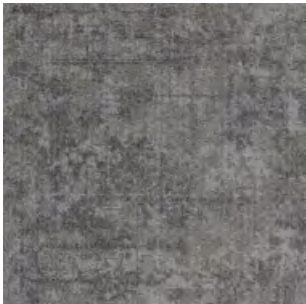
MOSSTONE

# MOSSTONE

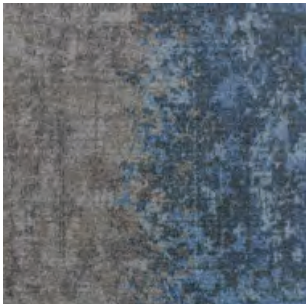




MOSSTONE



Mosstone -  
Cloud 700703



Mosstone Mix -  
Cloud+Tahoe Blue AB  
700703+700706



Mosstone -  
Tahoe Blue 700706





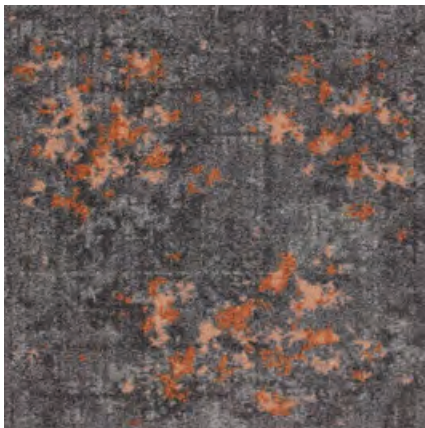
MOSSTONE

Mosstone - Portland Grey 700701, Mosstone+2 Accents - Portland Grey+Sky Blue, Peach 700701+34, 33

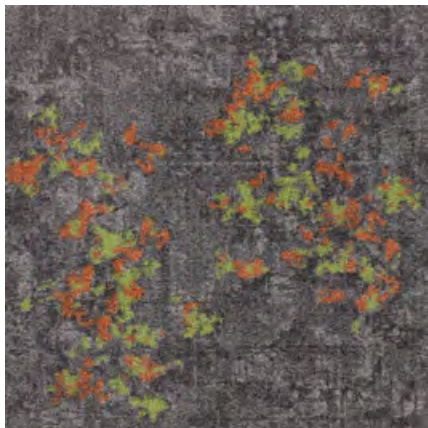




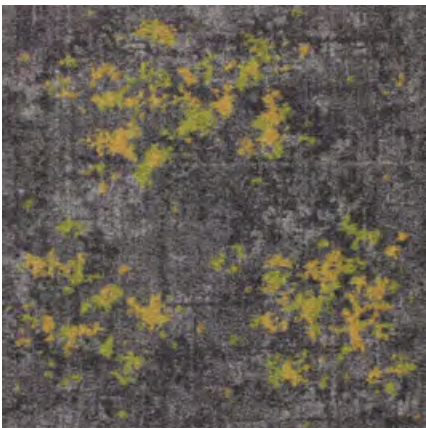




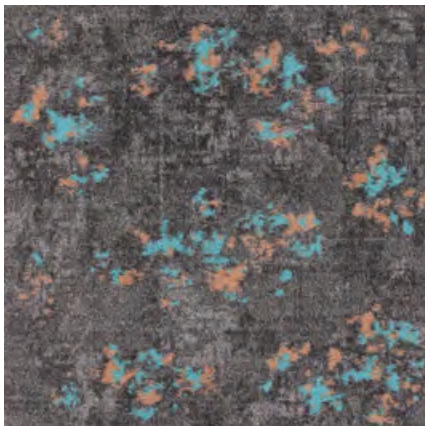
Portland Grey+Rust, Peach  
700701+01, 33



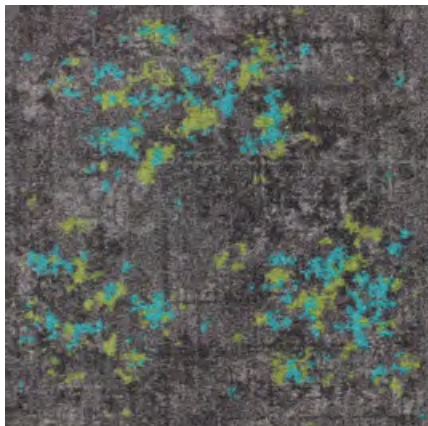
Portland Grey+Rust, Moss  
700701+01, 14



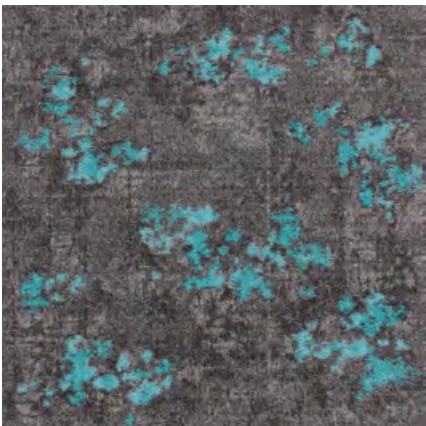
Portland Grey+Meadow,  
Mustard 700701+24, 06



Portland Grey+Sky Blue,  
Peach 700701+34, 33



Portland Grey+Turquoise,  
Moss 700701+02, 14



Portland Grey+Turquoise,  
Sky Blue 700701+02, 34

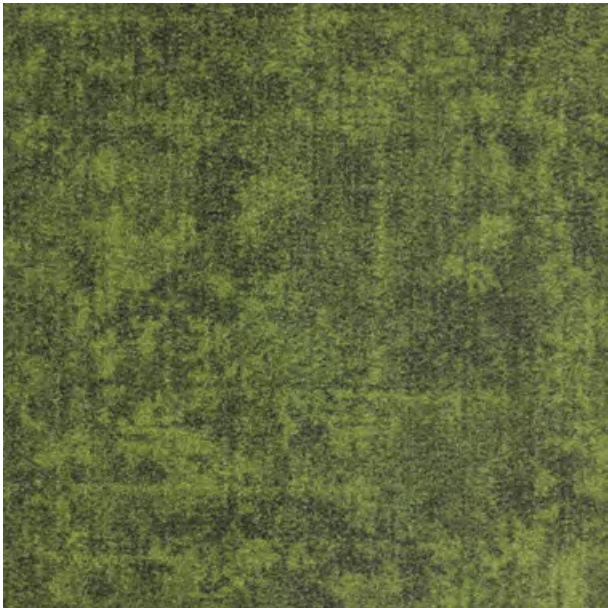








Tahoe Blue 700706



Asparagus 700708

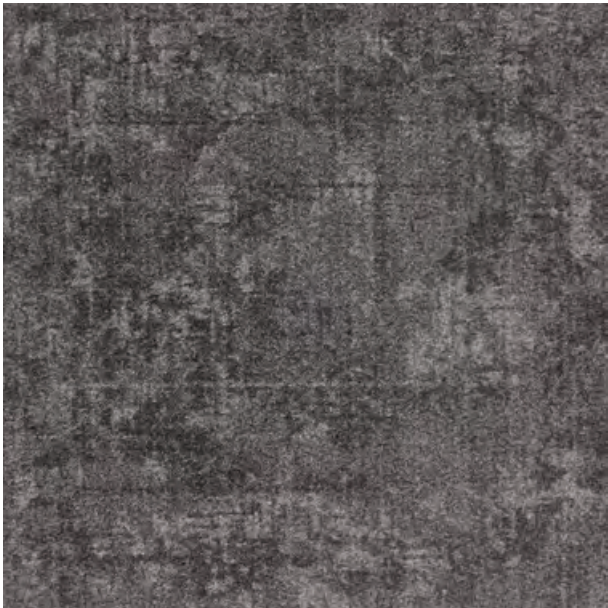


Sandcastle 700707



Brick 700709

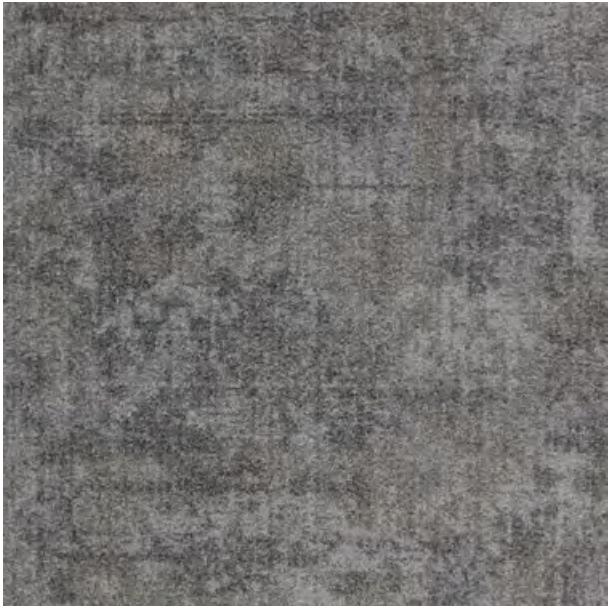




Portland Grey 700701



Mineral 700702



Cloud 700703



Pale Oak 700704





White Sand 700705





Mosstone - Cloud 700703, Mosstone+2 Accents - Portland Grey+Meadow, Mustard 700701+24, 06



Product specifications :

Construction	Textured tufted loop pile
Face Fiber	Now available in both fibers : - 100% <b>Sorona®</b> Fiber or - 100% <b>ReVi</b> (HD PBT - High density polybutylene terephthalate)
Dyed Method	Dye Infusion
Total Thickness	8.5 mm
Total Density	200,000 /m²
Backing	<b>ECOTEC®</b> (recycled PET cushion backing)
Tile Size	60 cm x 60 cm
Wear Classification	Hexapod ≥ 3.5 Heavy commercial
Flammability	≥ 0.45 (Class I)
Electrostatic Propensity	AATCC 134 ≤ 3kv
Colorfastness To Light	AATCC 16E ≥ 4
Noise Reduction Coefficient	ASTM C423-22 NRC 0.25 or higher
Indoor Air Quality	Singapore Green Building Council

Advantages :



Lifetime Stain Resistant



Exceptional Durability



Anti-Microbial



Ecotec Cushion Backing



Sound Absorbency

Permanent lifetime stain resistant is built into the core of the fiber. Just clean stubborn stains such as coffee with cold water, reducing cost and time.

Exceptional durability. Sorona and ReVi biopolymer molecular spring like structure, coupled with Ecotec cushion backing, allowing the fiber to bounce back into original shape after being compressed.

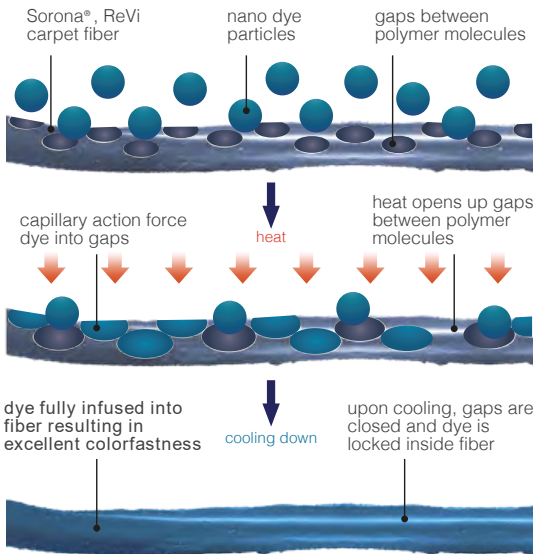
Sorona and ReVi dries faster and absorbs 16 times less moisture than nylon. Resulting in excellent anti-microbial, anti-mold and fungi properties where the environment for bacteria to breed is exceptionally reduced.

Ecotec cushion felt backing recycled from PET bottles offers superior walking comfort, and extends the life of the carpet by absorbing foot impact.

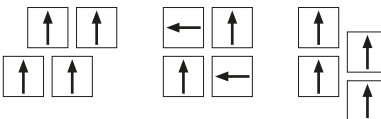
Ecotec cushion felt backing offers excellent sound absorbency, creating a better working and living environment.



Dye Infusion



Installation Methods :



Specifications are based on average normal manufacturing tolerances, variations do not affect product performance.

As with all quality carpets , slight variations in color may occur from dye lot to dye lot.

Protective chair pads are recommended under office chairs with roller castors to preserve appearance retention and to avoid excessive wear.

For end of life disposal, please refer to your country's disposal regulation.



Declare.





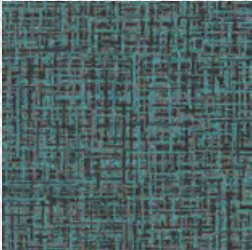
**WOVEN**



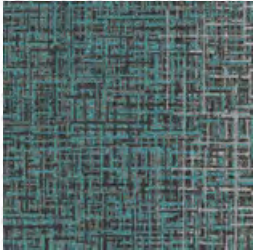




Connectivity and link pattern that can bring up the unity within the design and function of the space.



Arctic 05918



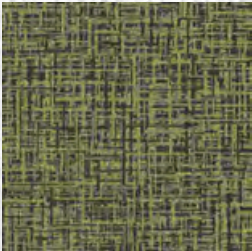
Arctic 05918 + Rain  
Cloud 05901 - A



Arctic 05918 + Rain  
Cloud 05901 - B



Rain Cloud 05901



Pear 05907 24



Pear 05907 24 + Rain  
Cloud 05901 - A



Pear 05907 24 + Rain  
Cloud 05901 - B



Rain Cloud 05901



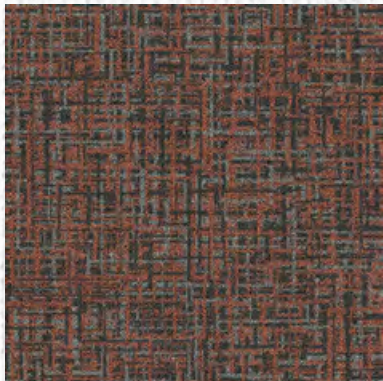


WOVEN



Mix-triangle | Red Ginger-Rain Cloud, Sunshine-Rain Cloud





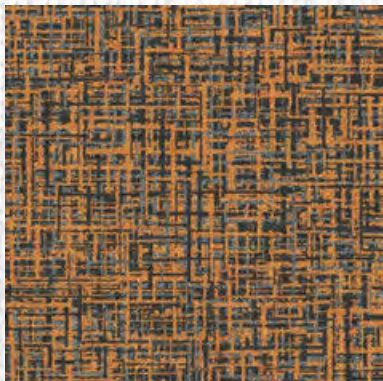
Woven  
Red Ginger 05904 04



Woven | Mix-triangle  
Red Ginger 05904 04-Rain  
Cloud 05901 P1



Woven  
Rain Cloud 05901



Woven  
Sunshine 05910 10



Woven | Mix-triangle  
Sunshine 05910 10-Rain  
Cloud 05901 P1



Woven  
Rain Cloud 05901

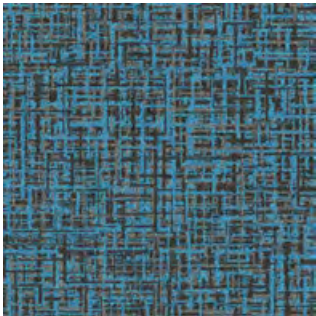




WOVEN

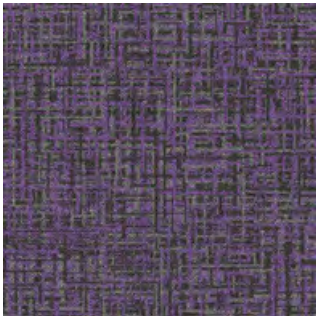
Mix-triangle | Sky Blue-Rain Cloud, Blue Berry-Rain Cloud





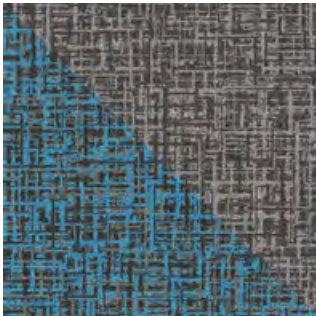
**Woven**

Sky Blue 05909 22



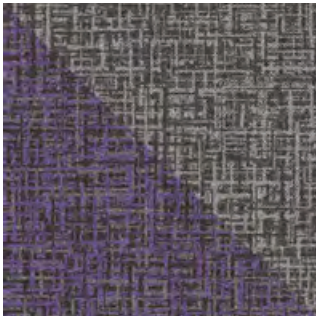
**Woven**

Blue Berry 05905 09



**Woven | Mix-triangle**

Sky Blue 05909 22-  
Rain Cloud 05901 P1



**Woven | Mix-triangle**

Blue Berry 05905 09-  
Rain Cloud 05901 P1



**Woven | Mix-triangle**

Sky Blue 05909 22-  
Rain Cloud 05901 P2



**Woven | Mix-triangle**

Blue Berry 05905 09-  
Rain Cloud 05901 P2



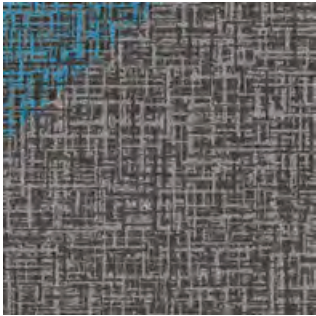
**Woven | Mix-triangle**

Sky Blue 05909 22-  
Rain Cloud 05901 P3



**Woven | Mix-triangle**

Blue Berry 05905 09-  
Rain Cloud 05901 P3



**Woven | Mix-triangle**

Sky Blue 05909 22-  
Rain Cloud 05901 P4



**Woven | Mix-triangle**

Blue Berry 05905 09-  
Rain Cloud 05901 P4



**Woven**

Rain Cloud 05901





WOVEN

Gradient | Terracotta 05917, Rain Cloud 05901, Cheese 05916 31





Woven | Red Ginger 05904 04, Pear 05907 24, Sunshine 05910 10, Blue Berry 05905 09,  
Rain Cloud 05901

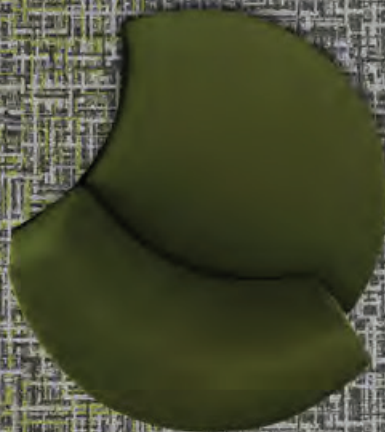
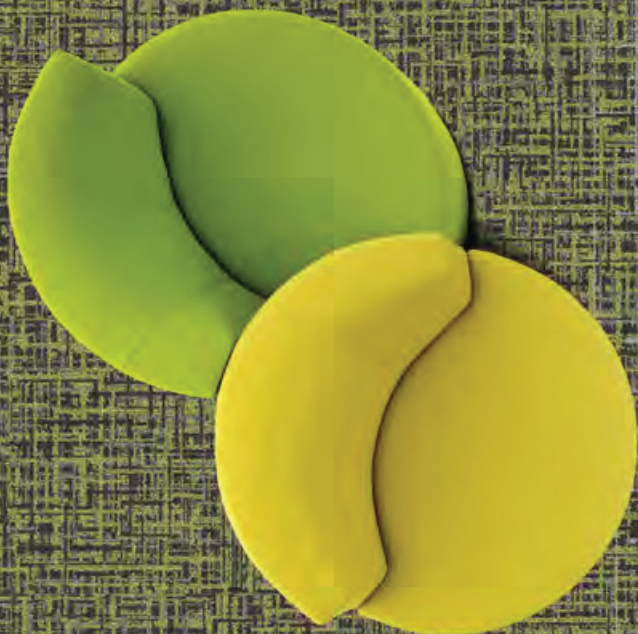




WOVEN

Gradient | Pear 05907 24, Rain Cloud 05901









WOVEN

Gradient | Red Ginger 05904 04, Rain Cloud 05901





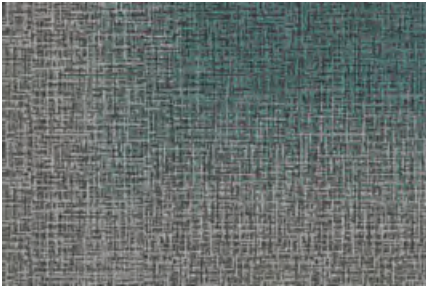
WOVEN

Gradient | Arctic 05918, Rain Cloud 05901





Arctic 05918 + Rain Cloud 05901 - Corner 1



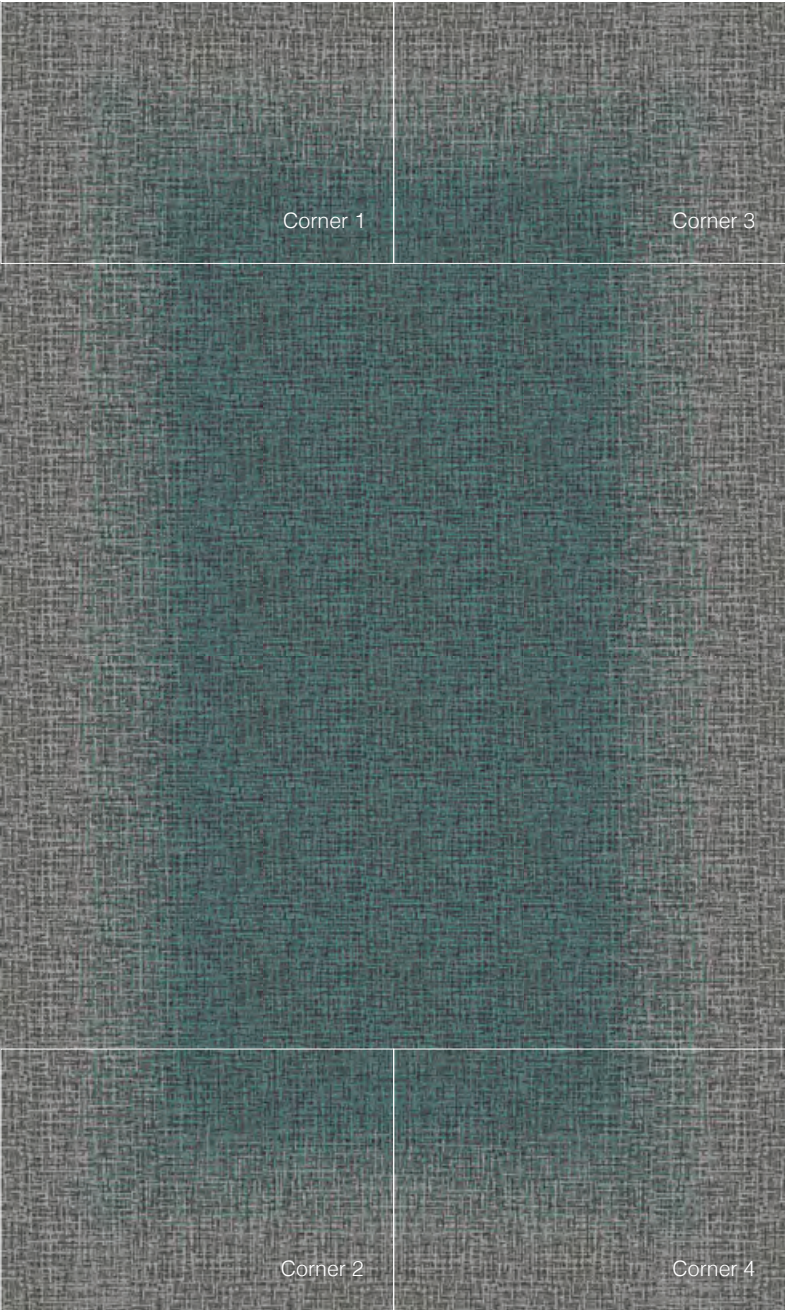
Arctic 05918 + Rain Cloud 05901 - Corner 2



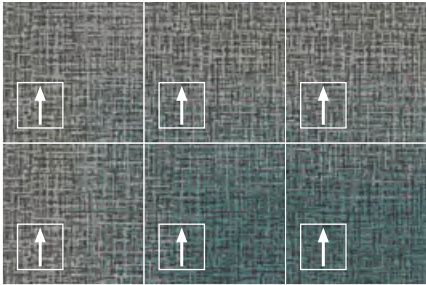
Arctic 05918 + Rain Cloud 05901 - Corner 3



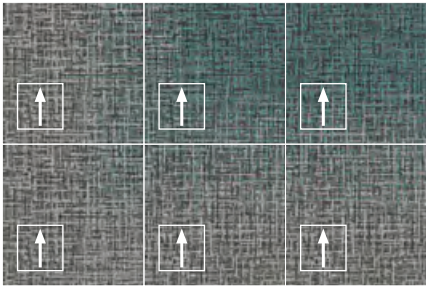
Arctic 05918 + Rain Cloud 05901 - Corner 4



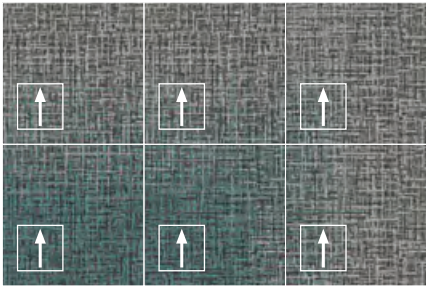




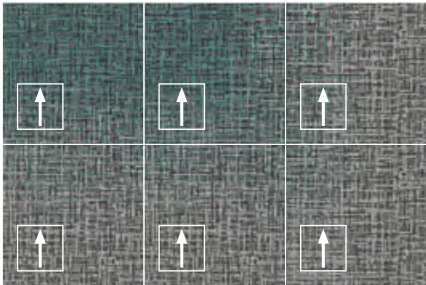
Arctic 05918 + Rain Cloud 05901 - Corner 1



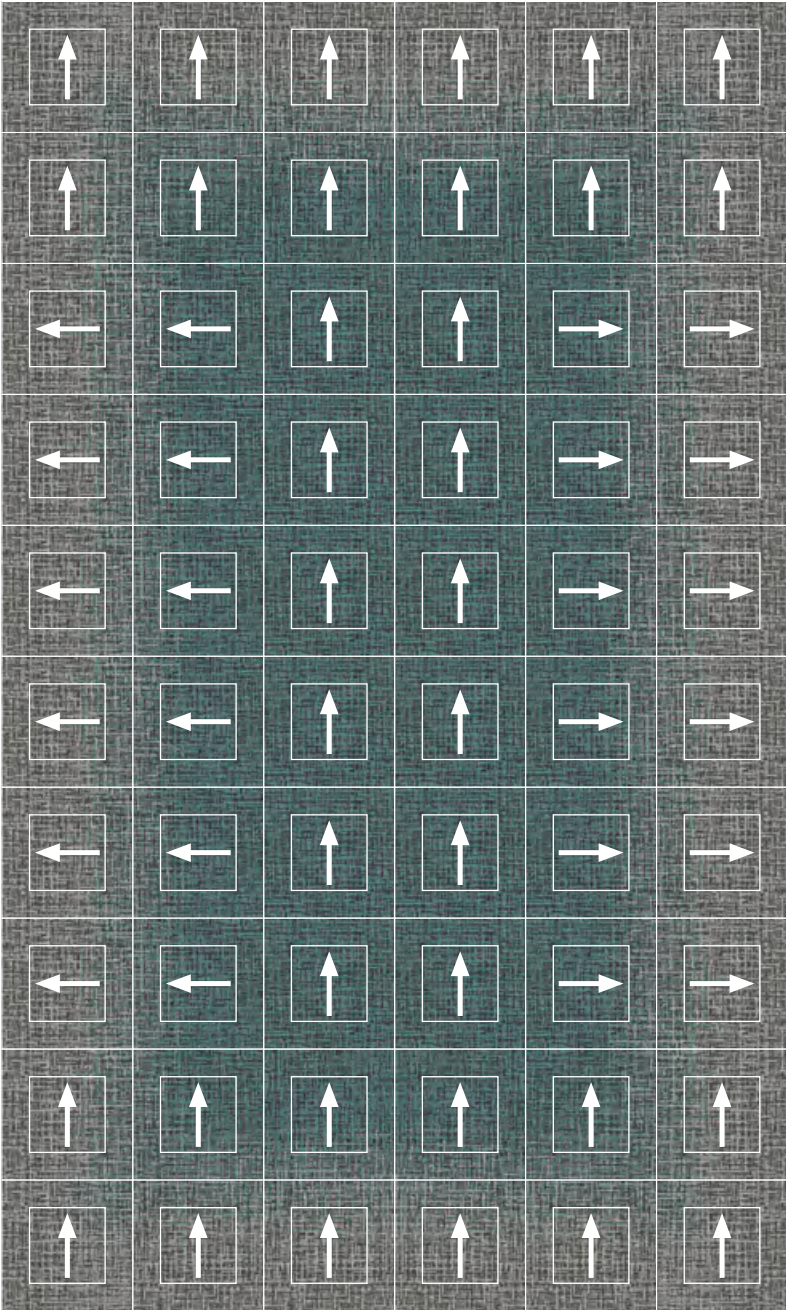
Arctic 05918 + Rain Cloud 05901 - Corner 2



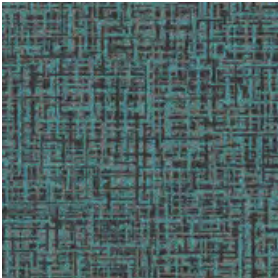
Arctic 05918 + Rain Cloud 05901 - Corner 3



Arctic 05918 + Rain Cloud 05901 - Corner 4







Arctic 05918



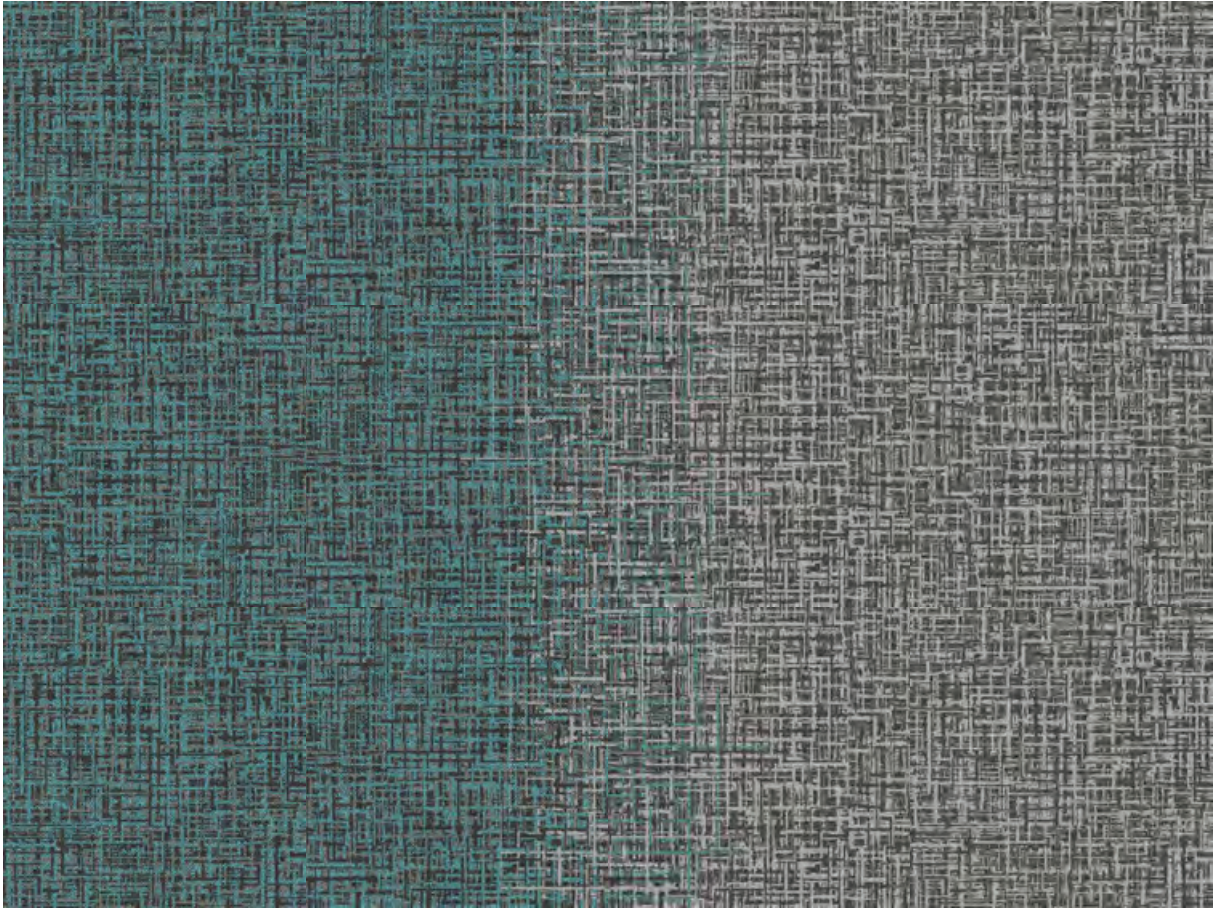
Arctic 05918 + Rain  
Cloud 05901 - A



Arctic 05918 + Rain  
Cloud 05901 - B

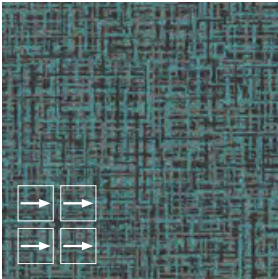


Rain Cloud 05901

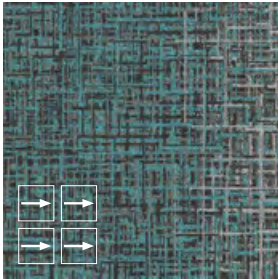


Gradient | Arctic + Rain Cloud

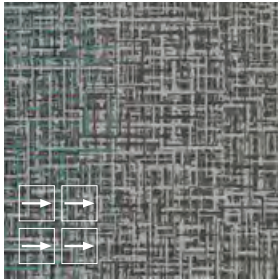




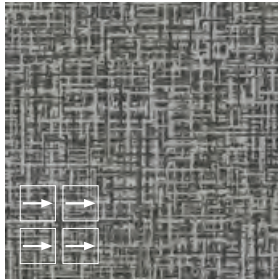
Arctic 05918



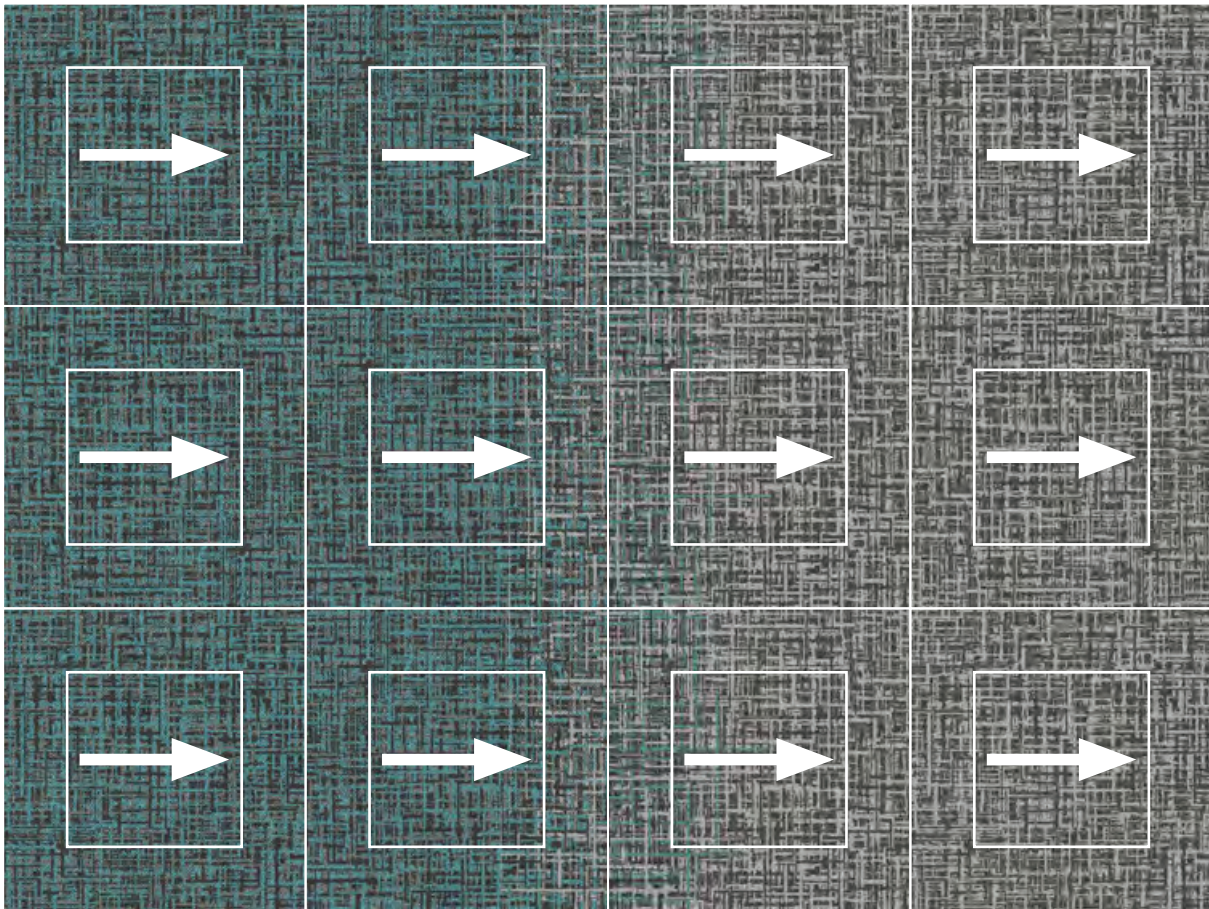
Arctic 05918 + Rain  
Cloud 05901 - A



Arctic 05918 + Rain  
Cloud 05901 - B



Rain Cloud 05901











WOVEN

Woven | Clam 05914

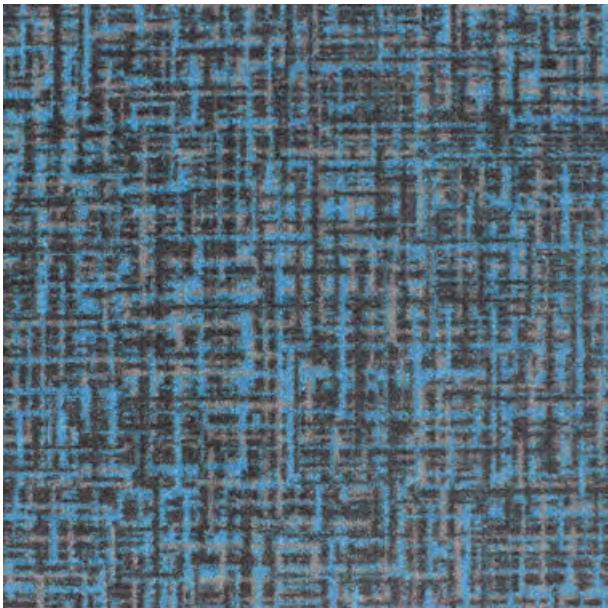




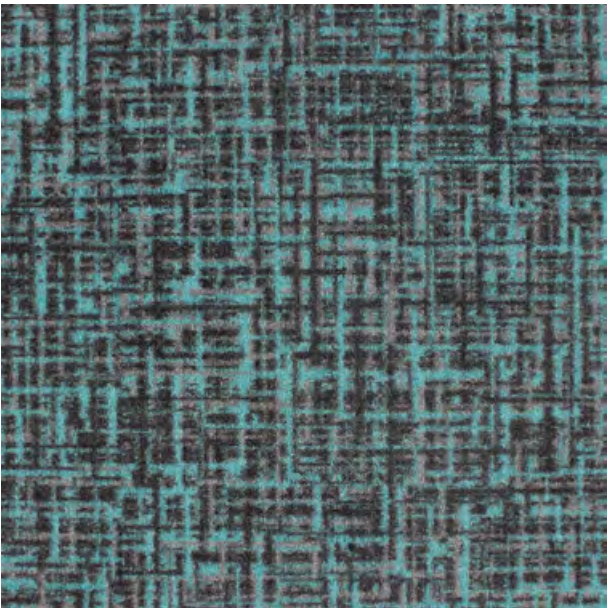
Rain Cloud 05901



Newspaper 05908

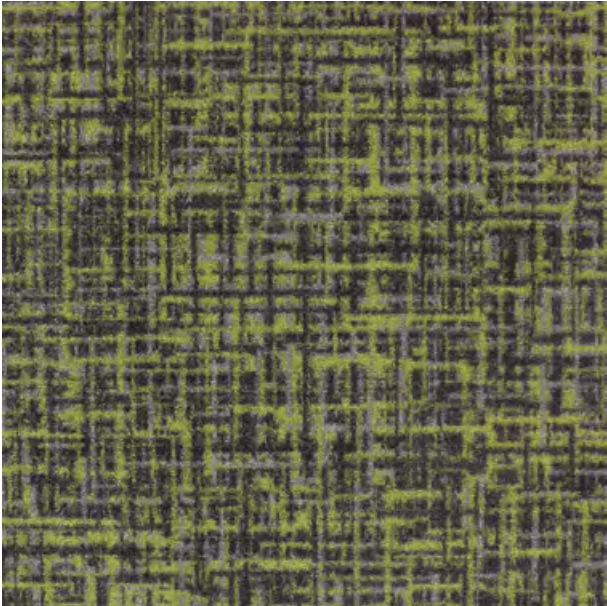


Sky Blue 05909 22



Arctic 05918





Pear 05907 24



Cheese 05916 31



Hazel Wood 05913



Clam 05914





Terracotta 05917



Sunshine 05910 10



Red Ginger 05904 04



Blue Berry 05905 09



Product specifications :

Construction	Textured tufted loop pile
Face Fiber	100% Sorona® Fiber
Dyed Method	Dye Infusion
Gauge	1/11 inch
Total Thickness	9 mm
Backing	ECOTEC® recycled cushion backing
Total Density	165,000 /m²
Primary Backing	100% non woven synthetic
Tile Size	60 cm x 60 cm
Wear Classification	Hexapod ≥ 3 Heavy commercial
Electrostatic Propensity	(AATCC 134) less than 3.5kv
Indoor Air Quality	Singapore Green Building Council

Advantages :



Lifetime Stain Resistant



Exceptional Durability



Anti-Microbial



Ecotec Cushion Backing



Sound Absorbency

Permanent lifetime stain resistant is built into the core of the fiber. Just clean stubborn stains such as coffee or wine with cold water, reducing cost and time.

Exceptional durability. Sorona biopolymer molecular spring like structure, coupled with Ecotec cushion backing, allowing the fiber to bounce back into original shape after being compressed.

Sorona dries faster and absorbs 16 times less moisture than nylon. Resulting in excellent anti-microbial, anti-mold and fungi properties where the environment for bacteria to breed is exceptionally reduced.

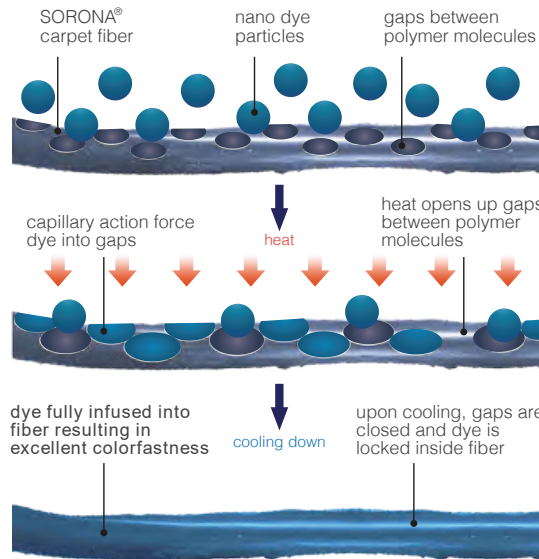
Ecotec cushion felt backing recycled from PET bottles offers superior walking comfort, and extends the life of the carpet by absorbing foot impact.

Ecotec cushion felt backing offers excellent sound absorbency, creating a better working and living environment.

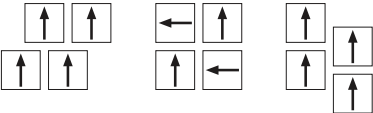


Goodrich Global  
SINCE 1983

Dye Infusion



Installation Methods :



Specifications are based on average normal manufacturing tolerances, variations do not affect product performance.

As with all quality carpets , slight variations in color may occur from dye lot to dye lot.

Protective chair pads are recommended under office chairs with roller castors to preserve appearance retention and to avoid excessive wear.

