



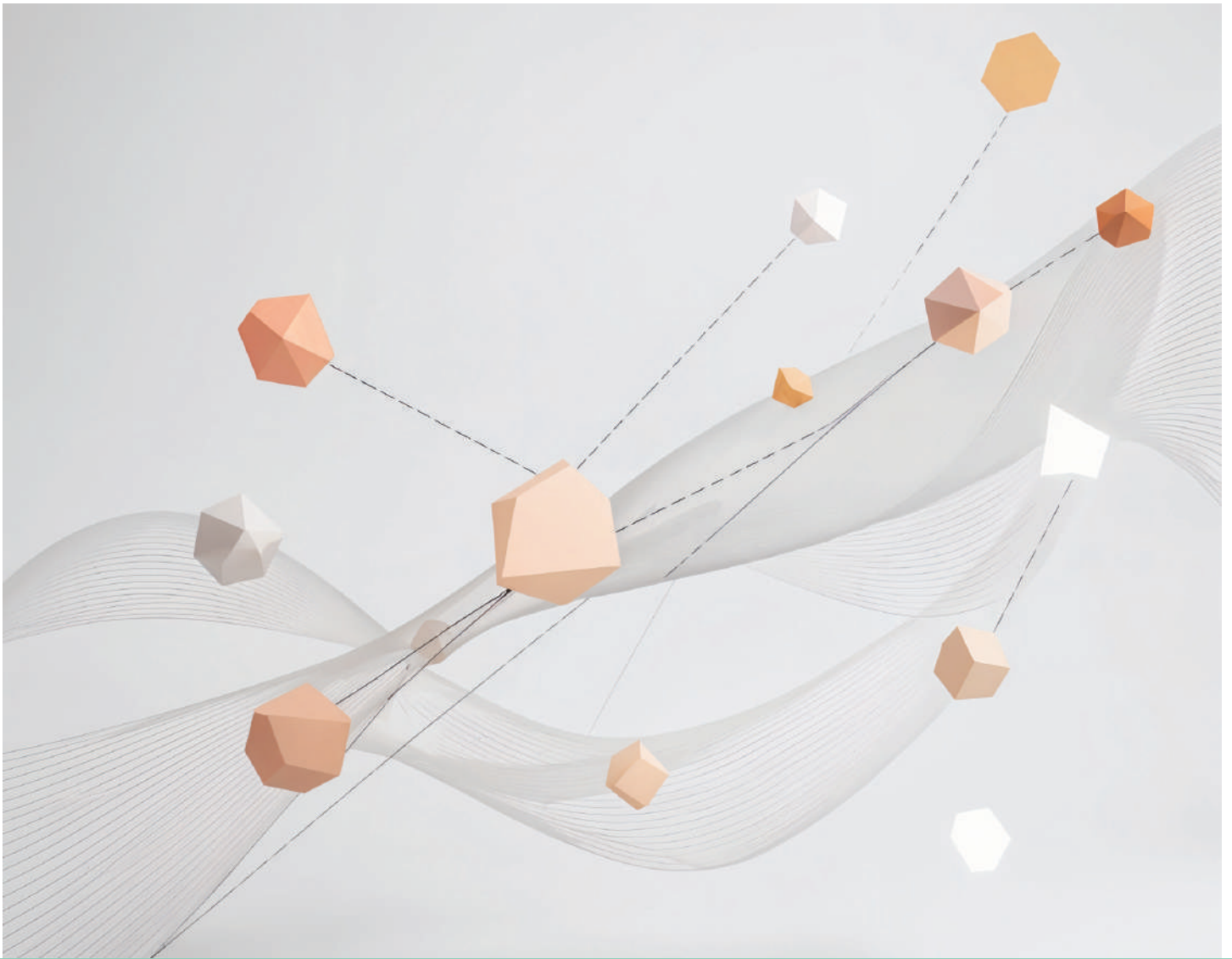
# WARREN

Ecofloor

Polyester Carpet Tile

Commercial | Hospitality | Residential





## The Geometry of Movement

Fluidity in motion is beautifully captured in **Ecofloor's Warren Collection**. This innovative carpet tile range evokes the sensation of movement through a fluid, abstract maze.

Each tile surface reveals an intricate network of geometric forms, creating a structured yet graceful composition. The clever use of colour enhances this effect, adding a striking three-dimensional quality.

**Warren** spans from subtle greys to bold primary tones, designed to bring definition and vibrancy to any space. Tempting accent colours such as terracotta, electric teal, and warm ochre are elegantly paired with exquisite cream bases to enrich the palette.

The interplay of pattern and colour results in a dynamic floorscape that is woven with comfort, movement, and direction. More than just flooring, it's an experience that invites you to walk, feel, and uncover the story beneath your feet.

# Warren

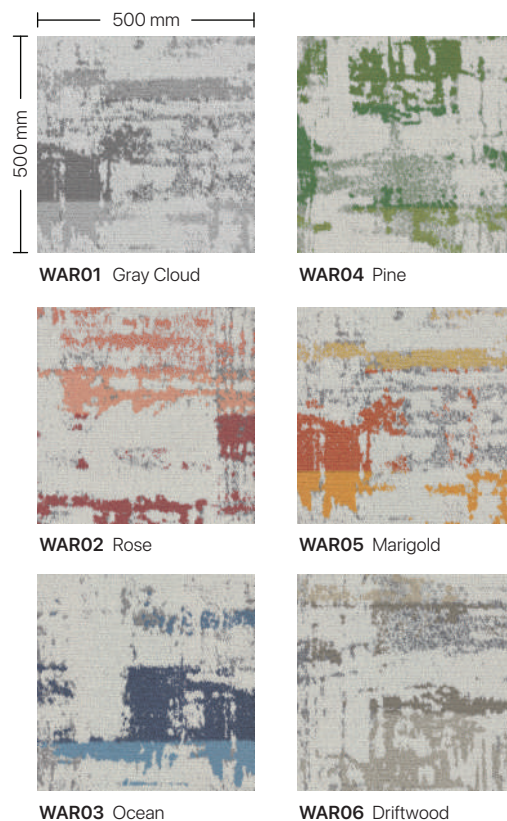
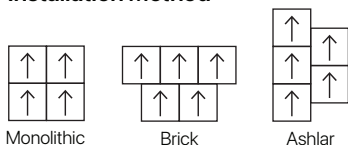
## Technical Specifications

Collection Name	Warren
Yarn	PolyLux Synthetic Fibre
Construction	Multi Level Loop
Dye Method	Solution Dyed
Gauge	1/10 inch
Stitches Per Inch	10 per inch
Pile Height	5.5 mm (+/-0.5 mm)
Total Height	9.5 mm (+/-0.5 mm)
Pile Weight	25 oz/sy (848 gm/sm)
Total Weight	145 oz/sy (4905 gm/sm +/- 300 gm/sm)
Primary Backing	Non-woven
Secondary Backing	Polyolefin Bac PRO
Packing	20 pcs(5 sm/box)

## Performance Specifications

Colorfastness	Grade 5 - No Change (AATCC 16)
Flammability	Class I (ASTM E648)
Smoke Density	Passed (ASTM E662)
Static Propensity	≤3.5 kV (AATCC-134)
SGBC	Very Good ✓✓

## Installation Method



## Performance Comparison

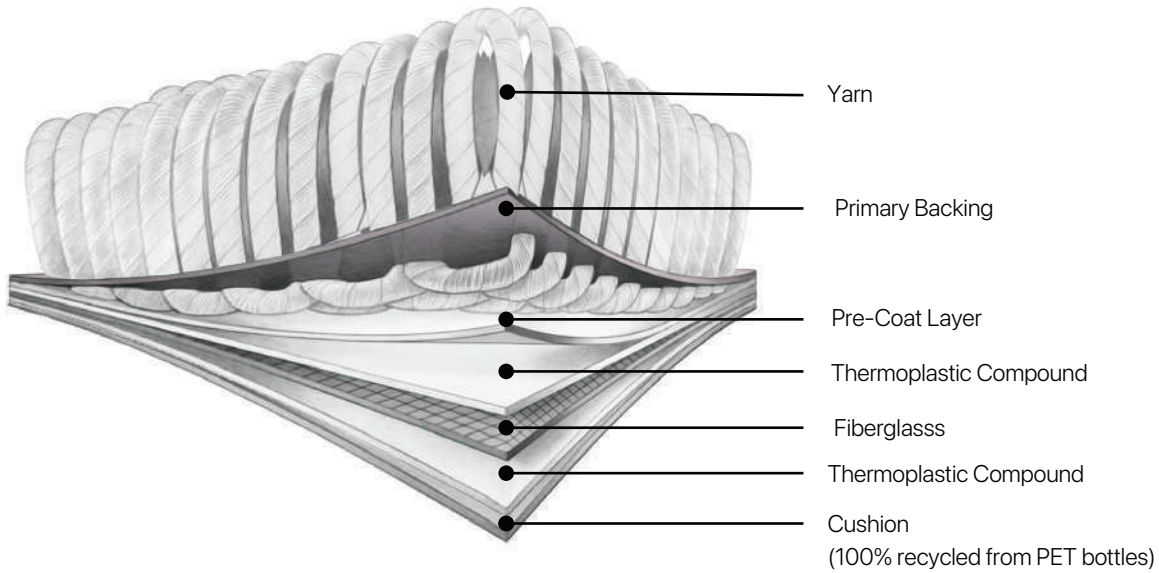
Feature	Nylon 6	PolyLux	Polypropylene
Heat Resistance	★★	★★	★
Flame Resistance	★★	★★	★
Stain Resistance	★ (exception for stain resistance treated nylon)	★★★★	★★
Hydrophobic Property (Low moisture absorption speeds drying and reduces mold risk)	★★	★★★★	★★★★
Resiliency	★★★★	★★	★

# Polyolefin Bac Pro

## Carpet Tile Backing

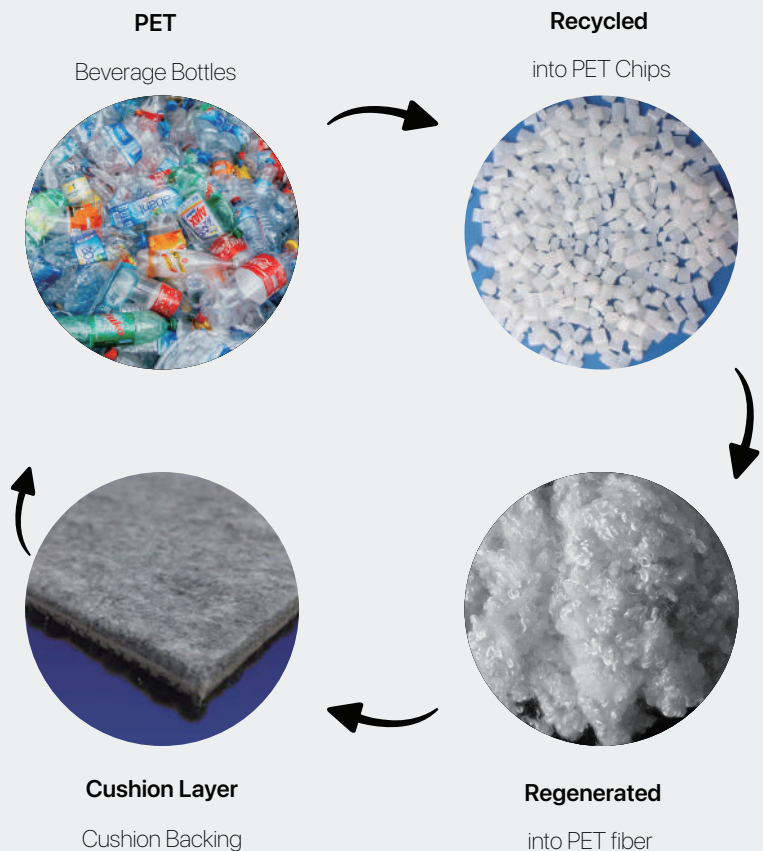


Polyolefin Bac Pro takes your spaces to a higher standard of sustainability to support greater wellness for people and planet. The Polyolefin Bac Pro carpet tile contains recycled content, helping to eliminate the plastic waste stream. It offers superior performance and sustainability to the carpets.



## Advantages

- **Comfortable Underfoot**  
Cushion backing tile helps reduce fatigue
- **Noise Reduction**  
Absorbs sound for better acoustics
- **Dimensional Stability**  
Maintains shape and appearance
- **Hydrophobic Cushion Backing**  
Repels moisture, prevents damage
- **Eco-friendly Materials**  
No plasticizers, PVC, or bitumen
- **Sustainable Backing**  
Made from 100% recycled PET bottles
- **Green Building Support**  
Contributes to LEED®, WELL & more
- **Certified Performance**  
CRI Green Label Plus & low carbon
- **Lightweight & Efficient**  
Easier shipping, lower freight cost.



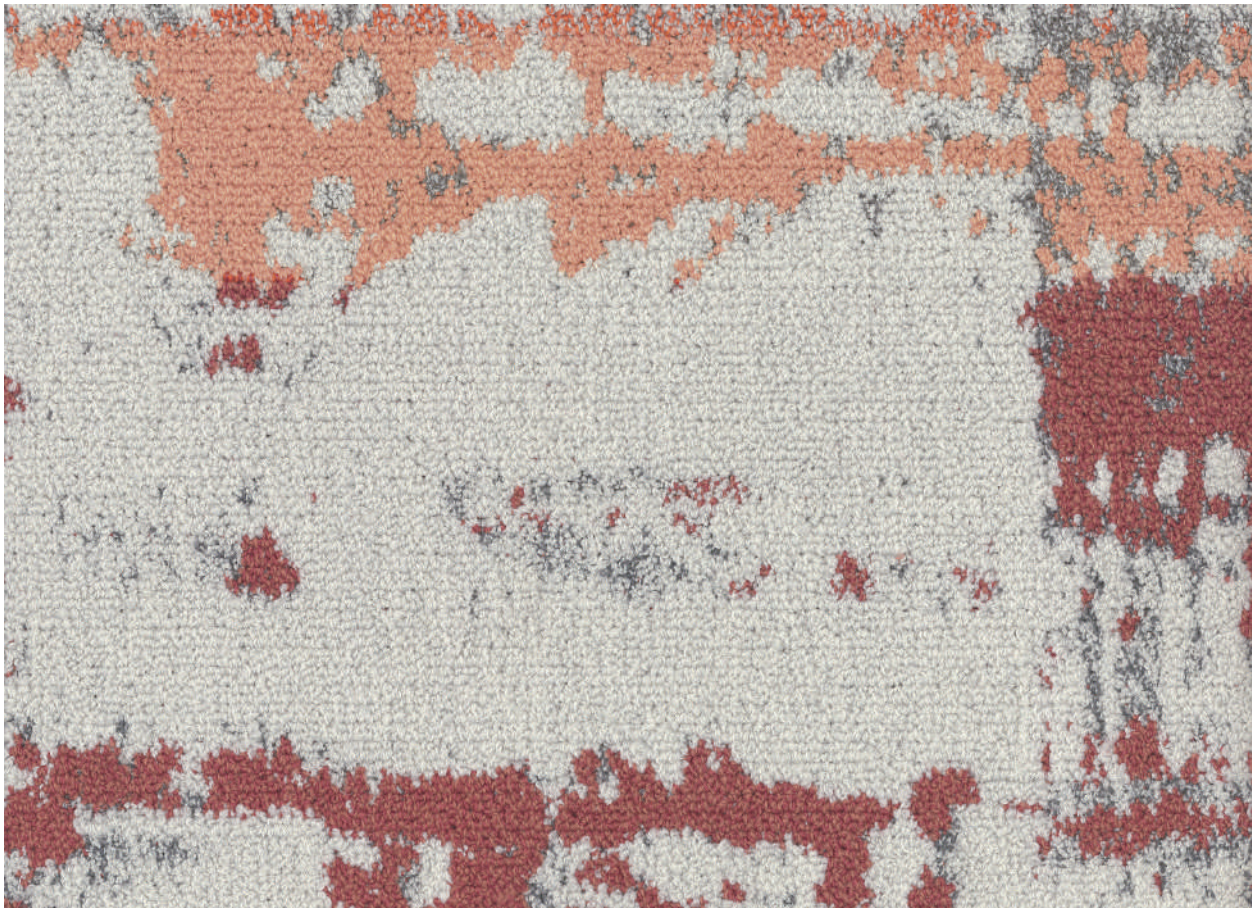
### Note:

- Product specifications are based on standard manufacturing tolerances. Slight variations may occur but will not impact performance.
- As with all quality carpets, minor color differences may appear between dye lots.
- To maintain appearance and minimize wear, the use of protective chair pads is recommended under office chairs with castor wheels.

Size 500 x 500 mm



**WAR01** Gray Cloud



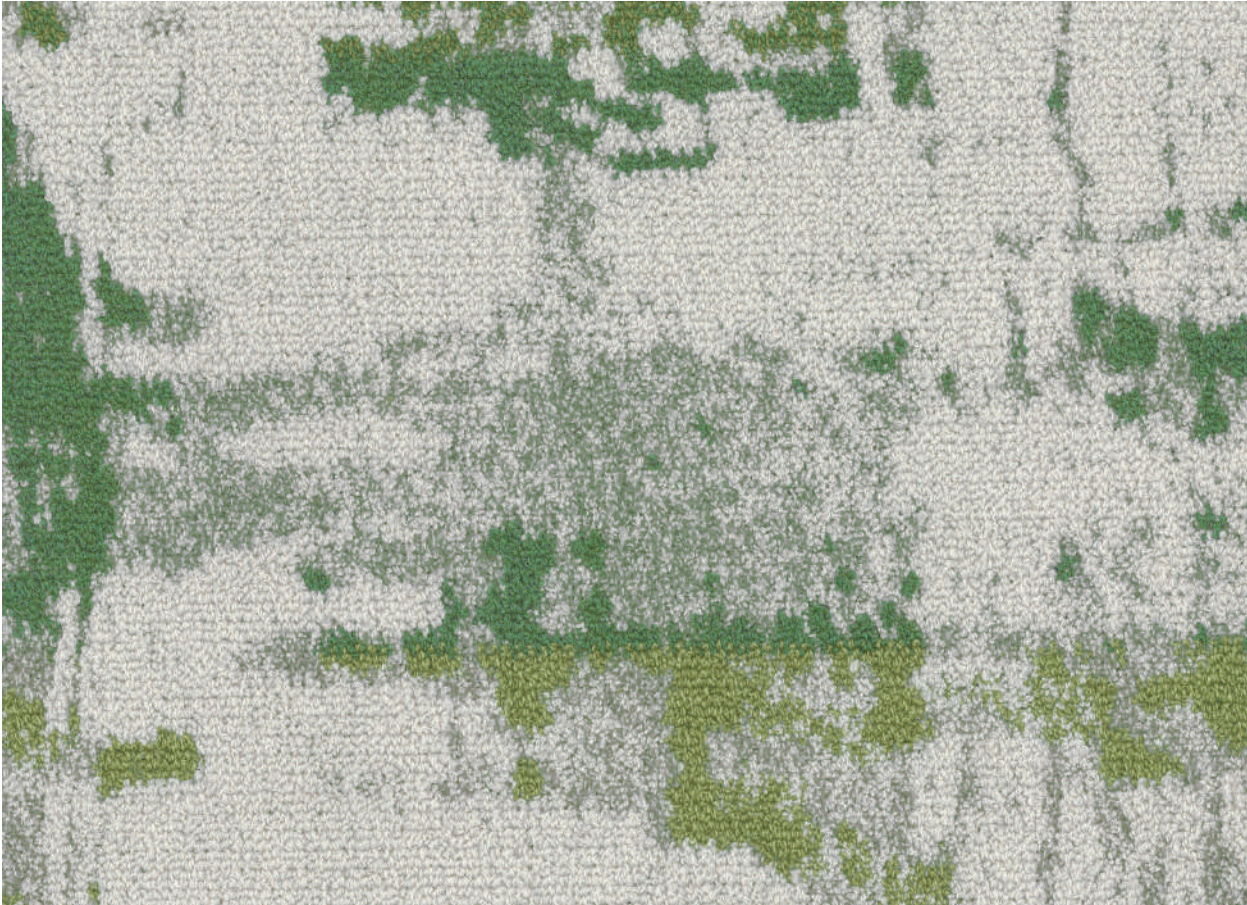
**WAR02** Rose

# Stocking

Size 500 x 500 mm



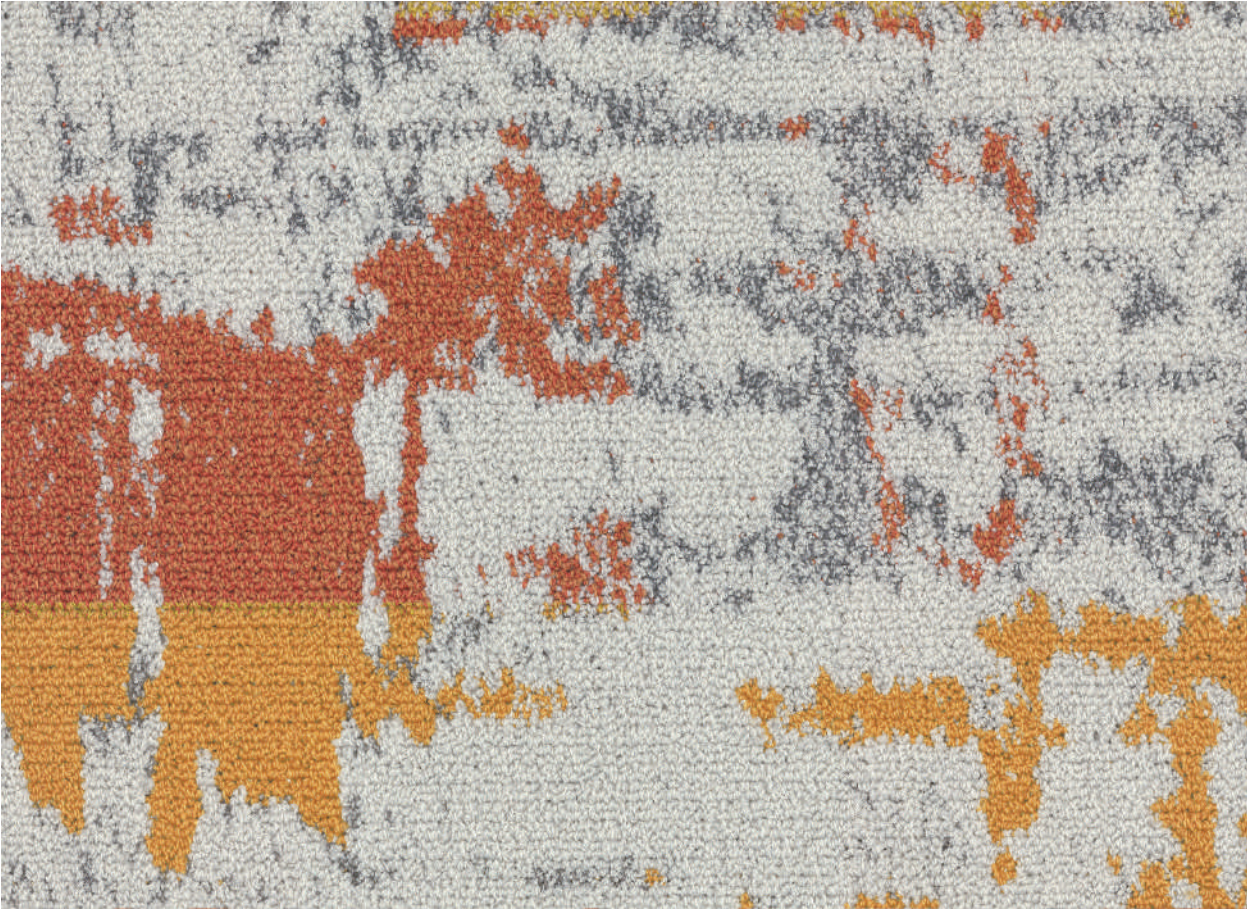
**WAR03** Ocean



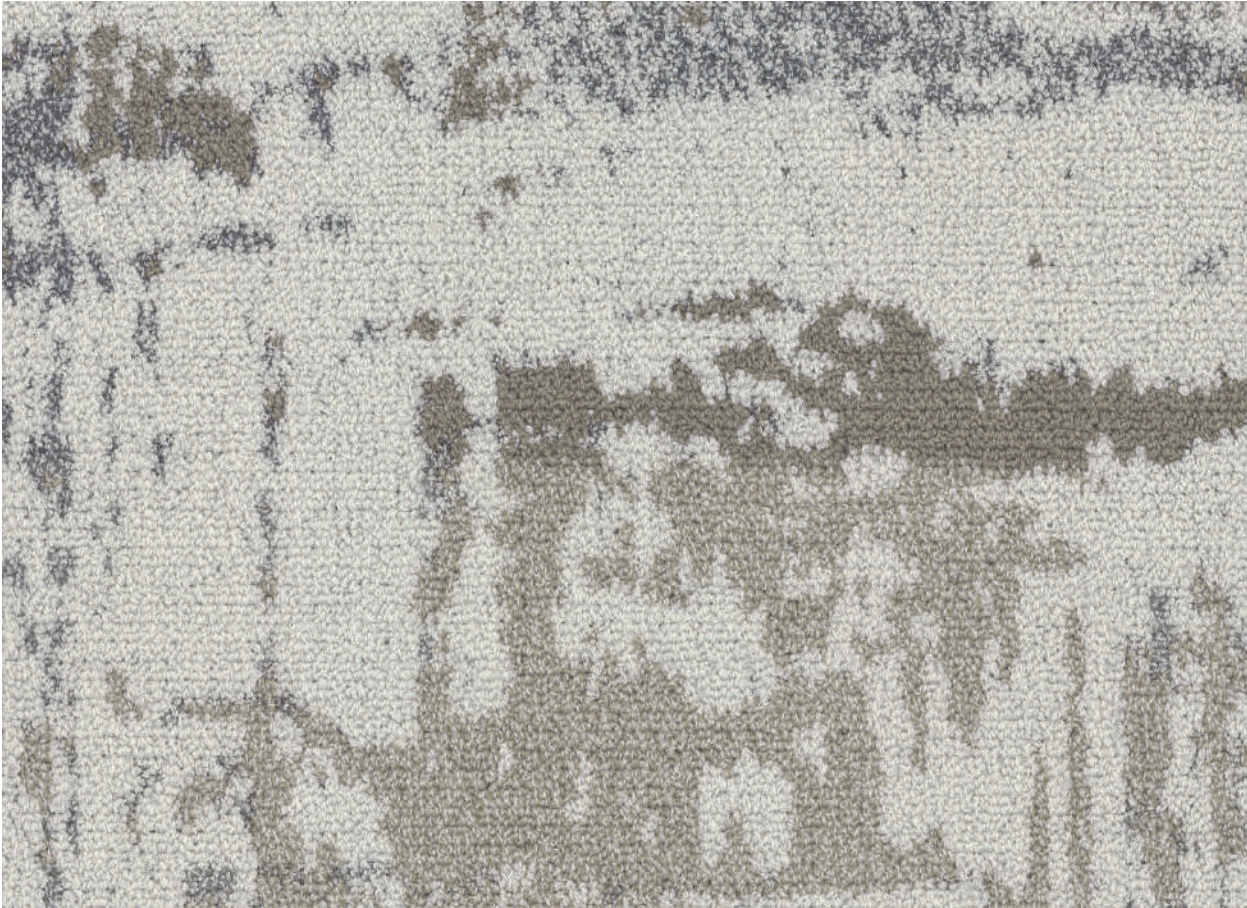
**WAR04** Pine

# Stocking

Size 500 x 500 mm



**WAR05** Marigold



**WAR06** Driftwood

WAR01 Gray Cloud (100%) | Quarter Turn Installation

Images and renderings in this sample book are for illustration purpose and may not represent the real colour.





WAR03 Ocean (100%) | Monolithic Installation

\* Images and renderings in this sample book are for illustration purpose and may not represent the real colour.



WAR01 Gray Cloud (50%) + WAR03 Ocean (50%) | Monolithic Installation

\* Images and renderings in this sample book are for illustration purpose and may not represent the real colour.



WAR04 Pine (100%) | Ashlar Installation

\* Images and renderings in this sample book are for illustration purpose and may not represent the real colour.



WAR05 Marigold (100%) | Monolithic Installation

\* Images and renderings in this sample book are for illustration purpose and may not represent the real colour.



WAR05 Marigold (50%) + WAR06 Driftwood (50%) | Brick Installation

\* Images and renderings in this sample book are for illustration purpose and may not represent the real colour.



WAR06 Driftwood (50%) + WAR01 Gray Cloud (50%) | Monolithic Installation

\* Images and renderings in this sample book are for illustration purpose and may not represent the real colour.



**Stay Connected** - [www.goodrichglobal.com](http://www.goodrichglobal.com) | [info@goodrichglobal.com](mailto:info@goodrichglobal.com)

Singapore (HQ) | Malaysia | Thailand | Vietnam | India | Indonesia | United Arab Emirates | Philippines | China | Hongkong (China)



Goodrich Global  
SINCE 1983