

**BRINK & CAMPMAN**  
INDOOR COLLECTION '26









# Index

## Tufted & Woven

Jazz	08
Sprout	10
Spring	14
Young	16
Origin	18
Arch	22
Pop Art	24
Dots	26
Rocks	30
Twinset	34
Mural	38
Shade	40

## Handwoven

Frame	46
Nest	48
Pebble	50
Marble	52
Grain	54
Craft	58
Atelier	68

## Handtufted

Element	72
Decor	78
Estella	102

## Brands

Orla Kiely	110
Morris & Co.	114
Laura Ashley	118
Sanderson	122
Scion	126
Harlequin	130
Wedgwood	134
Ted Baker	138
Florence Broadhurst	142

B&C Overview	144
--------------	-----

# Brink & Campman

Welcome to Brink & Campman, where tradition meets innovation. Established in 1897, we have over a century of experience in crafting, designing and developing exceptional rugs that elevate any space.

At our own factory and weave mill, skilled artisans work hand-in-hand with traditional looms and advanced robot tuft machines, ensuring each piece is meticulously crafted with an eye for every detail. Next to this we have an in-house design studio that is the heart of our company, here all our collections and developments sprout. We pride ourselves on our thorough approach, from concept to completion, ensuring the highest quality in every rug we produce. We blend traditional craftsmanship with cutting-edge technology to bring you rugs that are not only beautiful but also a joy to own.

Beyond our unique B&C collection, we develop and produce collections for globally renowned brands in the home interior and fashion world. These additional collections contribute to a comprehensive offering of rugs, developed from fresh perspectives and diverse techniques.

For generations, we have cooperated with trusted partners who supply rugs crafted using a variety of techniques, enriching our collections and offering you a diverse range of styles and finishes. These long-standing collaborations reflect our commitment to excellence and our dedication to providing the best for our customers.

Experience the perfect blend of tradition and technology, artistry and precision, with Brink & Campman. We create rugs that become a part of your life.



# Size Matters

## Any size on request

Is it a small rug or an extra-large rug that is creating defined areas in the room? Size does matter!

The impact of a rug with its texture and colour on a room is definitely there, whether you choose a small version or an extra-large. Depending on the technique Brink & Campman offers you a vast range of standard sizes. Would you like to order another size? No problem, we tailor your customer's desires and requirements with love. Please ask our sales service team for the details and specifications.



140 x 200 cm / 4'7" x 6'7"



170 x 240 cm / 5'7" x 7'10"



200 x 300 cm / 6'7" x 9'8"



250 x 350 cm / 8'2" x 11'6"

# Shape Matters

## Any shape on request

Is it a curved carpet or a hexagon shaped rug which is setting the tone in the room? Shape does matter!

Next to rectangles Brink & Campman offers you an unlimited variety of rug shapes for all tufted qualities. The only boundaries are the sizes of the ground screen. We tailor your customers desires and requirements with love. Whether it is a circle, an organic shape, a flower or even a mythical animal we craft it with joy for your customer. Any shape will do! Please ask our sales service team for the details and specifications.





Jazz Dense carbon 158904

# Jazz

tufted  
pure new wool

**jazz lush - high pile**

total weight: ca 6190 gr/m<sup>2</sup>

pile weight: ca 4790 gr/m<sup>2</sup>

pile height: ca 10/70 mm

**jazz dense - loop pile**

total weight: ca 3100 gr/m<sup>2</sup>

pile weight: ca 1700 gr/m<sup>2</sup>

pile height: ca 5 mm

available sizes:

140 x 200 4'7" x 6'7"

170 x 240 5'7" x 7'10"

200 x 300 6'7" x 9'8"

250 x 350 8'2" x 11'6"

custom sizes on request

An inspired blend of natural, undyed wool yarns combined with irregularly dyed threads has given rise to the JAZZ series, offered in two distinct variations: Dense and Lush. Each variation embodies its own unique character and aesthetic. The Dense variation of the JAZZ series features a rhythmic repetition of loops, enhanced by the interplay of the two types of yarns that twist around each other. The Lush variation indulges in luxury with its lavish, over-the-top long pile.



**Jazz Plush carbon**  
158504



**Jazz Dense carbon**  
158904



**Jazz Plush pumpkin**  
158503



**Jazz Plush natural**  
158501



**Jazz Plush storm**  
158528



**Jazz Dense pumpkin**  
158903



**Jazz Dense natural**  
158901



**Jazz Dense storm**  
158928

# Sprout

tufted  
pure new wool  
total weight: ca 5600 gr/m<sup>2</sup>  
pile weight: ca 4250 gr/m<sup>2</sup>  
pile height: ca 25/40-45 mm

available sizes:  
140 x 200 4'7" x 6'7"  
170 x 240 5'7" x 7'10"  
200 x 300 6'7" x 9'8"  
250 x 350 8'2" x 11'6"  
custom sizes on request

Our newest addition, SPROUT, is a distinctive blend of thick felted yarns playfully combined with pops of thinner, colorful yarn. From afar, it appears to be a solid color, but up close, you can see the depth and variety in the shades.



**Sprout ceylon sand**  
013326



**Sprout dusty ground**  
013319



**Sprout burnt tangerine**  
013316





# Sprout

tufted  
pure new wool  
total weight: ca 5600 gr/m<sup>2</sup>  
pile weight: ca 4250 gr/m<sup>2</sup>  
pile height: ca 25/40-45 mm

available sizes:  
140 x 200 4'7" x 6'7"  
170 x 240 5'7" x 7'10"  
200 x 300 6'7" x 9'8"  
250 x 350 8'2" x 11'6"  
custom sizes on request

Our newest addition, SPROUT, is a distinctive blend of thick felted yarns playfully combined with pops of thinner, colorful yarn. From afar, it appears to be a solid color, but up close, you can see the depth and variety in the shades.



**Sprout feather coat**  
013301



**Sprout terracotta**  
013323



**Sprout cobalt eclipse**  
013308

# Spring

tufted  
pure new wool  
total weight: ca 3900 gr/m<sup>2</sup>  
pile weight: ca 2500 gr/m<sup>2</sup>  
pile height: ca 15/45 mm

available sizes:  
140 x 200 4'7" x 6'7"  
170 x 240 5'7" x 7'10"  
200 x 300 6'7" x 9'8"  
250 x 350 8'2" x 11'6"  
custom sizes on request

The designers at Brink & Campman's studio thrive on experimenting with colours and yarns. Their creativity knows no bounds, and they particularly enjoy playing with the textures that emerge when combining different types of yarns. This passion and ingenuity have laid the foundation for the SPRING series, where the fusion of thick and thin yarns creates a visually stimulating and dynamic rug collection.



**Spring natural**  
059111



**Spring calendula**  
059103



**Spring moss**  
059137



**Spring pumpkin**  
059123



**Spring evergreen**  
059107



**Spring storm**  
059128





# Young

tufted  
pure new wool  
total weight: ca 3900 gr/m<sup>2</sup>  
pile weight: ca 2500 gr/m<sup>2</sup>  
pile height: ca 15/45 mm

available sizes:  
140 x 200 4'7" x 6'7"  
160 x 230 5'3" x 7'6"  
200 x 280 6'7" x 9'2"  
250 x 350 8'2" x 11'6"  
custom sizes on request

The YOUNG series stands out for its use of yarns blended in tonal colours. This approach creates a harmonious palette within a single colour family, resulting in a cohesive and serene aesthetics. The carefully curated colour scheme ensures that YOUNG rugs seamlessly integrate into any interior, offering versatility and timeless appeal.



**Young natural**  
061801



**Young driftwood**  
061805



**Young chutney**  
061806

# Origin

axminster woven  
pure new wool

**origin low - low pile**

total weight: ca 3160 gr/m<sup>2</sup>

pile weight: ca 1780 gr/m<sup>2</sup>

pile height: ca 18/19 mm

available sizes:

140 x 200 4'7" x 6'7"

170 x 240 5'7" x 7'10"

200 x 300 6'7" x 9'8"

250 x 350 8'2" x 11'6" (will be tufted)

custom sizes on request



**Origin Low mist**  
066004

axminster woven  
pure new wool

**origin high - high pile**

total weight: ca 4400 gr/m<sup>2</sup>

pile weight: ca 3000 gr/m<sup>2</sup>

pile height: ca 15/30 mm

available sizes:

140 x 200 4'7" x 6'7"

170 x 240 5'7" x 7'10"

200 x 300 6'7" x 9'8"

250 x 350 8'2" x 11'6" (will be tufted)

custom sizes on request



**Origin High mist**  
066104

tufted

pure new wool

**origin loop - loop pile**

total weight: ca 4150 gr/m<sup>2</sup>

pile weight: ca 2800 gr/m<sup>2</sup>

pile height: ca 30 mm

available sizes:

140 x 200 4'7" x 6'7"

170 x 240 5'7" x 7'10"

200 x 300 6'7" x 9'8"

250 x 350 8'2" x 11'6"

custom sizes on request



**Origin Loop mist**  
066204



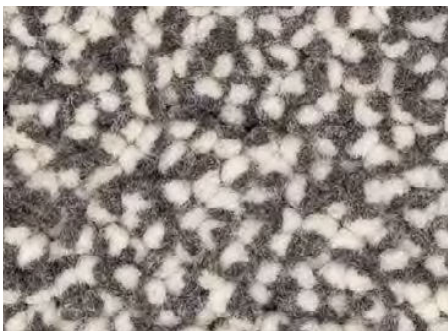
**Origin Low greige**  
066001



**Origin High greige**  
066101



**Origin Loop greige**  
066201



**Origin Low stone**  
066005



**Origin High stone**  
066105



**Origin Loop stone**  
066205





# Tradition

The art of rug-making at Brink & Campman is steeped in tradition and craftsmanship. Our craftsmen and -women, with their years of experience and inherited expertise dating back to our founding, meticulously weave and tuft each rug, ensuring unwavering quality. We take pride in our ability to innovate with different pile heights, yarn thicknesses, and qualities using both traditional looms and advanced robotic tufting machines, all while maintaining consistent excellence.

Our mastery extends to combining simple elements into countless variations: thick yarns, thin yarns, combinations of thick-thin, high piles with loops, and other innovative textures. To guarantee durability, thick yarns undergo a rigorous in-house fulling process that strengthens wool fibers and enhances rug longevity.

Partnering with skilled textile dyers, we achieve vibrant colours and subtle shades, from solid hues to naturally inspired tones and uniquely irregular dyes, all executed to perfection. This dedication to craftsmanship and innovation ensures that each Brink & Campman rug is not just a product, but a testament to enduring quality and creativity.

# Arch

tufted  
pure new wool  
total weight: ca 4150 gr/m<sup>2</sup>  
pile weight: ca 2800 gr/m<sup>2</sup>  
pile height: ca 30 mm

available sizes:  
140 x 200 4'7" x 6'7"  
170 x 240 5'7" x 7'10"  
200 x 300 6'7" x 9'8"  
250 x 350 8'2" x 11'6"  
custom sizes on request

The ARCH collection is a series of robot tufted rugs distinguished by their sturdy loop pile, commonly referred to as bouclé in the world of flooring. This type of loop pile gives the rugs a distinct and consistent texture with a robust, flat surface, which is both visually appealing and versatile for various interior styles.



**Arch glacier**  
067004



**Arch natural**  
067001



**Arch chutney**  
067006



**Arch driftwood**  
067005





# Pop Art

axminster woven  
pure new wool  
total weight: ca 4000 gr/m<sup>2</sup>  
pile weight: ca 2600 gr/m<sup>2</sup>  
pile height: ca 15/40 mm

available sizes:  
140 x 200 4'7" x 6'7"  
160 x 230 5'3" x 7'6"  
200 x 280 6'7" x 9'2"  
custom sizes on request

At Brink & Campman, we are not afraid of colour! The POP ART series stands out with its vibrant, multicoloured blends that capture the eye and transform any space. These lively and cheerful blends inject a sense of joy and optimism into your living room, brightening your environment and uplifting your mood.



**Pop Art glacier**  
066904



**Pop Art natural**  
066901



**Pop Art steel**  
066914



**Pop Art chutney**  
066907



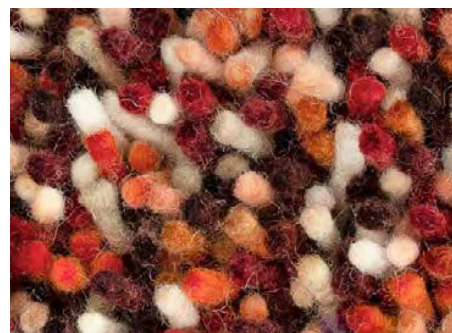
**Pop Art coral**  
066902



**Pop Art true blue**  
066908



**Pop Art amber**  
066926



**Pop Art tomato**  
066900

# Dots

axminster woven  
pure new wool  
total weight: ca 4500 gr/m<sup>2</sup>  
pile weight: ca 3000 gr/m<sup>2</sup>  
pile height: ca 25/30 mm

available sizes:  
140 x 200 4'7" x 6'7"  
170 x 240 5'7" x 7'10"  
200 x 300 6'7" x 9'8"  
250 x 350 8'2" x 11'6"  
custom sizes on request

The carefully curated colour combinations of our Dots series have a unique ability to adapt like a chameleon. In serene and minimalist settings, these rugs add a robust texture with subtle hints of colour, gently enhancing the space without overwhelming it. Conversely, in more vibrant and expressive interiors, the restrained colour palettes of the rugs provide a soothing counterbalance, helping to harmonize and soften the overall aesthetic.



**Dots pumpkin**  
170523



**Dots calendula**  
170213



**Dots moss**  
170537



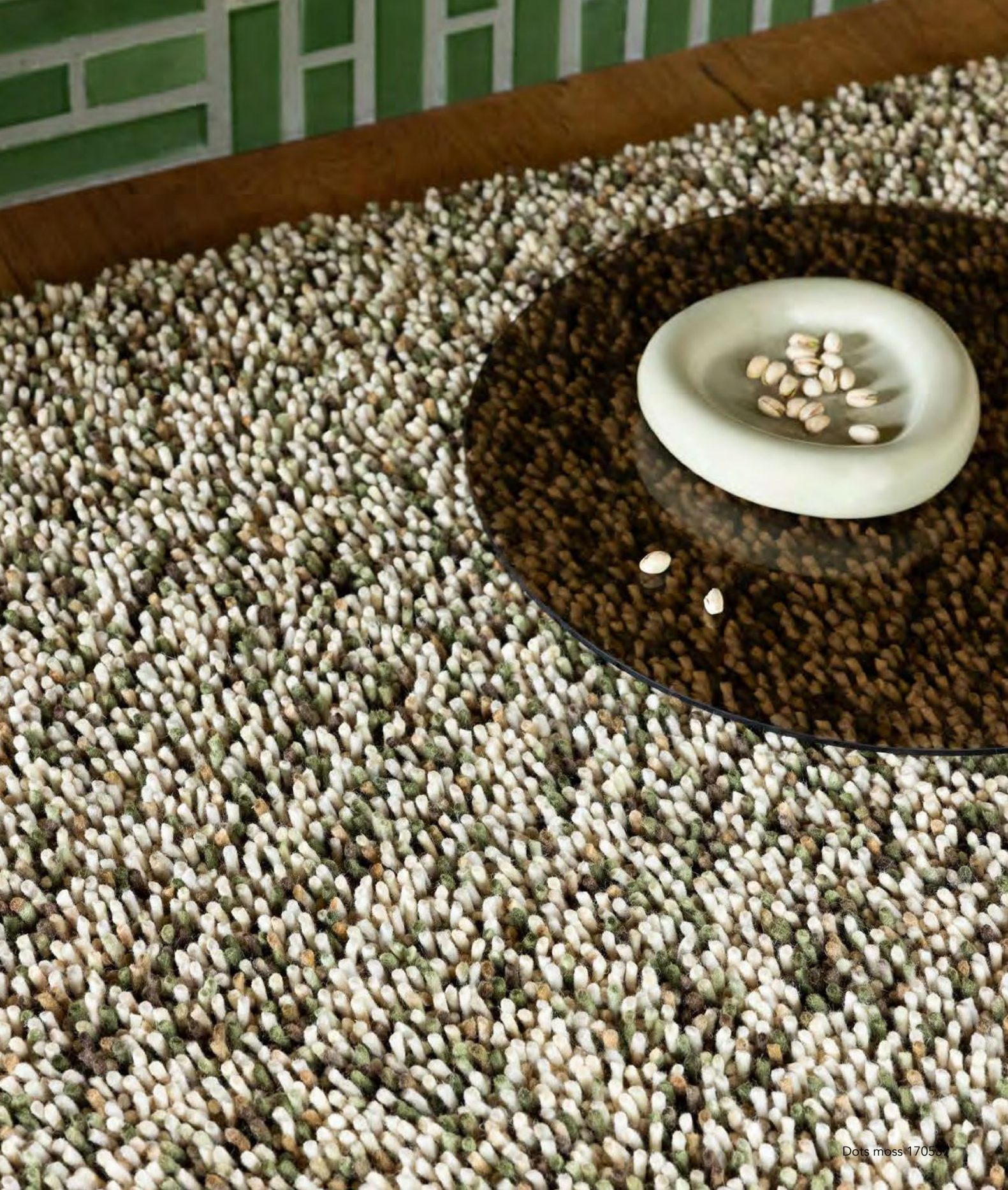
**Dots natural**  
170501



**Dots frost**  
170504



**Dots confetti**  
170411





# Dots

axminster woven  
pure new wool  
total weight: ca 4500 gr/m<sup>2</sup>  
pile weight: ca 3000 gr/m<sup>2</sup>  
pile height: ca 25/30 mm

available sizes:  
140 x 200 4'7" x 6'7"  
170 x 240 5'7" x 7'10"  
200 x 300 6'7" x 9'8"  
250 x 350 8'2" x 11'6"  
custom sizes on request

The carefully curated colour combinations of our Dots series have a unique ability to adapt like a chameleon. In serene and minimalist settings, these rugs add a robust texture with subtle hints of colour, gently enhancing the space without overwhelming it. Conversely, in more vibrant and expressive interiors, the restrained colour palettes of the rugs provide a soothing counterbalance, helping to harmonize and soften the overall aesthetic.



**Dots storm**  
170528



**Dots terrazzo**  
170401



**Dots soil**  
170405

# Rocks

axminster woven  
pure new wool  
total weight: ca 5500 gr/m<sup>2</sup>  
pile weight: ca 4000 gr/m<sup>2</sup>  
pile height: ca 20/50 mm

available sizes:  
140 x 200 4'7" x 6'7"  
170 x 240 5'7" x 7'10"  
200 x 300 6'7" x 9'8"  
250 x 300 8'2" x 9'8"  
250 x 350 8'2" x 11'6"  
custom sizes on request

This series of rugs boasts a robust and sturdy appearance, a hallmark of quality and craftsmanship. The standard sizes are Axminster woven in our own product facility, using a blend of soy jute and organic cotton as warp and weft, which provides a durable and eco-friendly base. The high pile, which gives the rugs their luxurious texture, is made from felted wool yarns. One of the standout features of this series is its rich and varied colour palette. Through a sophisticated dyeing process, the yarns become multicoloured, creating a depth and vibrancy that allows these rugs to complement a wide range of interior designs.



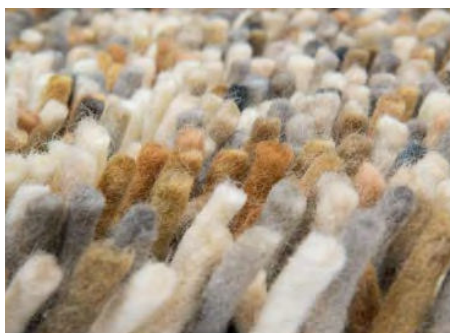
**Rocks pumpkin**  
070523



**Rocks calendula**  
070213



**Rocks moss**  
070537



**Rocks natural**  
070501



**Rocks frost**  
070504



**Rocks confetti**  
070411





# Rocks

axminster woven  
pure new wool  
total weight: ca 5500 gr/m<sup>2</sup>  
pile weight: ca 4000 gr/m<sup>2</sup>  
pile height: ca 20/50 mm

available sizes:  
140 x 200 4'7" x 6'7"  
170 x 240 5'7" x 7'10"  
200 x 300 6'7" x 9'8"  
250 x 300 8'2" x 9'8"  
250 x 350 8'2" x 11'6"  
custom sizes on request

This series of rugs boasts a robust and sturdy appearance, hallmark of quality and craftsmanship. The standard sizes are Axminster woven in our own product facility, using a blend of soy jute and organic cotton as warp and weft, which provides a durable and eco-friendly base. The high pile, which gives the rugs their luxurious texture, is made from felted wool yarns. One of the standout features of this series is its rich and varied colour palette. Through a sophisticated dyeing process, the yarns become multicoloured, creating a depth and vibrancy that allows these rugs to complement a wide range of interior designs.



**Rocks storm**  
070528



**Rocks terrazzo**  
070401



**Rocks soil**  
070405

# Twinset | Shore, Terrain & Urban

tufted

Tencel™/ pure new wool

total weight: ca 3700 gr/m<sup>2</sup>

pile weight: ca 2200 gr/m<sup>2</sup>

pile height: ca 17 mm

available sizes:

140 x 200 4'7" x 6'7"

170 x 240 5'7" x 7'10"

200 x 300 6'7" x 9'8"

250 x 350 8'2" x 11'6"

custom sizes on request

available in a range of colours



With exactly two key features, the designers at Brink & Campman have crafted this exclusive series. Utilizing a simple high pile and loop technique, this beautiful yarn is brought to its full expression. The yarn's subtle sheen is achieved through a blend of wool and eucalyptus fibers. In loop form, the colours appear light and softly lustrous, while in cut pile they resemble velvet with a deep glow.



**Twinset Urban oyster**  
022104



**Twinset Terrain shiitake**  
121734



**Twinset Shore olive**  
121607





# Twinsset | Shore, Terrain & Urban



**Twinsset oyster**  
Urban 022104  
Terrain 121704  
Shore 121604



**Twinsset taupe**  
Urban 022101  
Terrain 121701  
Shore 121601



**Twinsset silver**  
Urban 022131  
Terrain 121731  
Shore 121631



**Twinsset tan**  
Urban 022152  
Terrain 121752  
Shore 121652



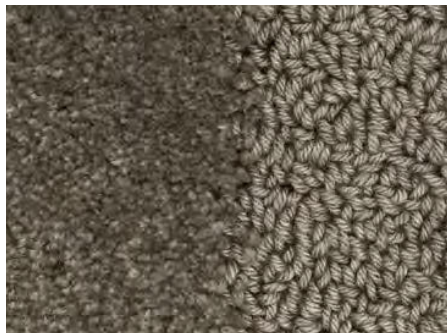
**Twinsset antique**  
Urban 022106  
Terrain 121706  
Shore 121606



**Twinsset golden**  
Urban 022116  
Terrain 121716  
Shore 121616



**Twinsset olive**  
Urban 022107  
Terrain 121707  
Shore 121607



**Twinsset shiitake**  
Urban 022134  
Terrain 121734  
Shore 121634



**Twinsset graphite**  
Urban 022135  
Terrain 121735  
Shore 121635

# Mural | Form, Modest & Bold

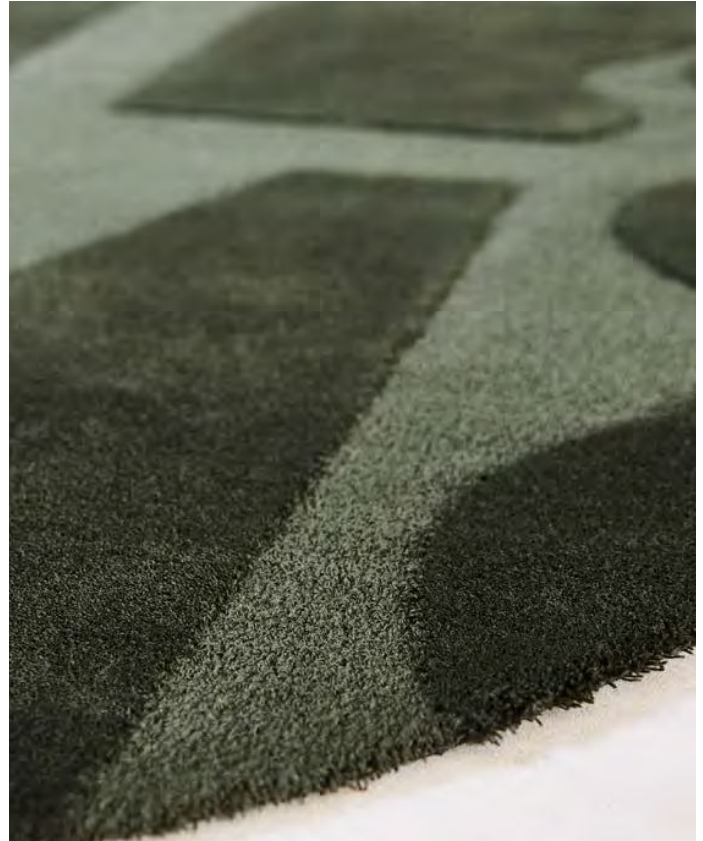
tufted  
pure new wool  
total weight: ca 3500 gr/m<sup>2</sup>  
pile weight: ca 2000 gr/m<sup>2</sup>  
pile height: ca 17 mm

available sizes:

<b>Form</b>		<b>Modest &amp; Bold</b>	
140 x 240	4'7" x 7'10"	140 x 200	4'7" x 6'7"
160 x 280	5'3" x 9'2"	170 x 240	5'7" x 7'10"
200 x 350	6'7" x 11'6"	200 x 280	6'7" x 9'2"
250 x 440	8'2" x 14'5"	250 x 350	8'2" x 11'6"

custom sizes on request  
each design available in all 3 colours

Resembling a bas-relief carved in stone, MURAL makes a striking impression. Abstract and solid forms are meticulously tufted in a high pile and low loop combination, available in three distinct colours and shapes. This refined design of shapes, textures, and varying heights adds a profound architectural element to any room.



**Mural Form forest**  
121107  
**Mural Form burgundy**  
121130  
**Mural Form cement**  
121134



**Mural Modest burgundy**  
121100  
**Mural Modest forest**  
121117  
**Mural Modest cement**  
121114



**Mural Bold cement**  
121104  
**Mural Bold forest**  
121127  
**Mural Bold burgundy**  
121120





Shade Low beige dark chocolate 010101

# Shade | Low

tufted  
pure new wool  
total weight: ca 4000 gr/m<sup>2</sup>  
pile weight: ca 2650 gr/m<sup>2</sup>  
pile height: ca 18 mm

available sizes:  
170 x 240 5'3" x 9'2"  
200 x 300 6'7" x 9'8"  
250 x 350 8'2" x 11'6"  
custom sizes on request

From golden yellow to olive green, from navy blue to silver-grey, from bold to subdued, the SHADE series embodies a refined spectrum of eight exquisite colour transitions. Each transition is meticulously crafted to blend seamlessly into various interior settings, offering versatility and elegance.

Deep, rich colours in fine wool are expertly tufted to create sophisticated gradients that resemble precious jewels for your floor. This luxurious quality not only enhances the visual appeal but also adds a plush, inviting texture underfoot, making SHADE rugs both functional and aesthetically pleasing.



**Shade Low silver-polar night**  
010104



**Shade Low beige-dark chocolate** 010101



**Shade Low umber-tobacco**  
010103



**Shade Low olive-deep forest**  
010107



**Shade Low brass-indigo**  
010108



**Shade Low plum-fig**  
010100



**Shade Low lemon-gold**  
010106



**Shade Low electric blue-aubergine**  
010118

# Shade | High

tufted  
pure new wool  
total weight: ca 3750 gr/m<sup>2</sup>  
pile weight: ca 2380 gr/m<sup>2</sup>  
pile height: ca 45 mm

available sizes:  
170 x 240 5'3" x 9'2"  
200 x 300 6'7" x 9'8"  
250 x 350 8'2" x 11'6"  
custom sizes on request

From golden yellow to olive green, from navy blue to silver-grey, from bold to subdued, the SHADE series embodies a refined spectrum of eight exquisite colour transitions. Each transition is meticulously crafted to blend seamlessly into various interior settings, offering versatility and elegance.

Deep, rich colours in fine wool are expertly tufted to create sophisticated gradients that resemble precious jewels for your floor. This luxurious quality not only enhances the visual appeal but also adds a plush, inviting texture underfoot, making SHADE rugs both functional and aesthetically pleasing.



**Shade High silver-polar night**  
011904



**Shade High beige-dark chocolate**  
011901



**Shade High umber-tobacco**  
011903



**Shade High olive-deep forest**  
011907



**Shade High brass-indigo**  
011908



**Shade High plum-fig**  
011900



**Shade High lemon-gold**  
011906



**Shade High electric blue-aubergine**  
011918



Shade High silver polar night 011904



# Handcrafted

Creating a handwoven, flatwoven wool rug is an intricate art form that elevates our craftsmanship. These rugs are double-sided usable, offering versatility and extended use. Our new series of flatwoven wool rugs are a testament to the seamless integration of traditional craftsmanship and modern design. Our designs blend timeless aesthetics with modern flair.

Each rug is meticulously handwoven by skilled craftsmen and -women, ensuring the highest quality and attention to detail. These rugs not only enhance your living space but also tell a story of dedication and creativity.

In collaboration with our trustworthy partners, we have developed truly unique designs that stand out from the rest. By blending the old with the new and incorporating our own felted yarns, we have introduced four new series of flatwoven wool rugs. With an innovative approach towards the traditional handweaving process, the outcome has resulted in series that capture both beauty and artistry.

# Frame

handwoven  
pure new wool/sisal  
total weight: ca 1800 gr/m<sup>2</sup>  
no pile due to flatweave structure

available sizes:  
140 x 200 4'7" x 6'7"  
170 x 240 5'7" x 7'10"  
200 x 300 6'7" x 9'8"  
250 x 350 8'2" x 11'6"  
custom sizes on request

reversible

---

Introducing our stylish and modernistic flatwoven rugs, designed to frame your space with modest elegance. Crafted from a blend of wool and sisal, these reversible rugs feature an all-over block pattern in friendly colours that bring warmth to any room. The rectangular shape ensures versatility in placement, whether in the living room, dining area, or bedroom.



**Frame natural**  
129311



**Frame mustard**  
129306



**Frame leaf**  
129307



**Frame brick**  
129300





# Nest

handwoven  
pure new wool  
total weight: ca 3200 gr/m<sup>2</sup>  
no pile due to flatweave structure

available sizes:

140 x 200 4'7" x 6'7"

170 x 240 5'7" x 7'10"

200 x 300 6'7" x 9'8"

250 x 350 8'2" x 11'6"

custom sizes on request

---

Twisted knots and nesting patterns; explore the complexity of the flatweave series NEST. Three yarns are knotted and handloomed to obtain this sturdy flatweave rug in a friendly look. We take pride in using our own yarns, ensuring quality and the joy of combining colours that elevate your space.



**Nest ink**  
129428



**Nest leather**  
129403



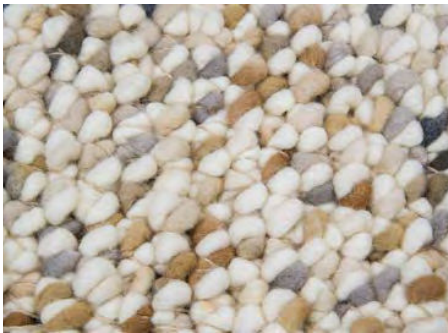
# Pebble

handwoven  
pure new wool  
total weight: ca 4500 gr/m<sup>2</sup>  
no pile due to flatweave structure

available sizes:  
140 x 200 4'7" x 6'7"  
170 x 240 5'7" x 7'10"  
200 x 300 6'7" x 9'8"  
250 x 350 8'2" x 11'6"  
custom sizes on request

reversible

This handwoven series beautifully captures the textured essence of a pebble beach. It features thick felted yarns and yarns dyed using a special process, intricately knotted and woven into a dense flat weave. The PEBBLE rugs exude a luxurious richness combined with a timeless appeal, making them a sophisticated addition to any interior.



**Pebble light natural**  
129811



**Pebble natural**  
129801



**Pebble moss**  
129837



**Pebble pumpkin**  
129823



**Pebble frost**  
129804

# Marble

handwoven  
pure new wool  
total weight: ca 4500 gr/m<sup>2</sup>  
no pile due to flatweave structure

available sizes:  
140 x 200 4'7" x 6'7"  
170 x 240 5'7" x 7'10"  
200 x 300 6'7" x 9'8"  
250 x 350 8'2" x 11'6"  
custom sizes on request

The MARBLE series comprises handwoven rugs that showcase intricate craftsmanship. These rugs are adorned with 'marbles'—thick clusters crafted from a blend of our luxurious, thick felted yarns. Available in a variety of colour combinations, the MARBLE series effortlessly complements any interior decor. The harmonious mix of colours within each rug ensures versatility, making them an ideal choice for enhancing the aesthetic appeal of living spaces. Whether placed in a minimalist setting or used to add depth to a vibrant room, these rugs bring a touch of elegance and warmth.



**Marble weather**  
029501



**Marble calendula**  
029503



**Marble acid**  
029517



**Marble storm**  
029528



**Marble moss**  
029537



**Marble pumpkin**  
029523



**Marble carbon**  
029534



**Marble forest**  
029547



**Marble russet**  
029500





# Grain

handwoven  
pure new wool  
total weight: ca 2200 gr/m<sup>2</sup>  
no pile due to flatweave structure

available sizes:

140 x 200 4'7" x 6'7"

160 x 230 5'3" x 7'6"

200 x 280 6'7" x 9'2"

250 x 350 8'2" x 11'6"

custom sizes on request

reversible

Handwoven is the GRAIN series, where our vigorous yarns are transformed into an attractive interplay of fresh stripes within this flat weave. Its reversible design not only enhances its aesthetic versatility but also ensures prolonged durability, making it a practical and stylish addition to any space.



**Grain light natural**  
013501



**Grain coral**  
013502



**Grain glacier**  
013504



**Grain driftwood**  
013505



**Grain chutney**  
013506



**Grain lemon**  
013507

# Artisanal

Immerse yourself in the world of artisanal rugs, where a long tradition of craftsmanship is combined with modernistic aesthetics to create truly unique pieces made by hand, piece by piece. Our collection celebrates the beauty of handweaving and hand-knotting, featuring robust and strong materials like jute, handspun wool, and cotton.

Our skilled artisans have perfected the art of different techniques such as double weaving, braid weaving, kilim weaving and hand-knotting, techniques passed down through generations. Each rug is a testament to their dedication and expertise, showcasing intricate patterns and textures that add depth and character to any space.

We use only the finest materials to create our woven rugs. Handspun wool, jute, and cotton are selected for their durability and natural appeal. These materials not only ensure a robust and strong product but also bring a sense of warmth and comfort to your home with a lot of tactility. In our hand-knotted rugs you'll find wool and viscose for a lustrous appearance.

Whether you prefer the intricate details of hand-knotted rugs or the simplicity of flatwoven surfaces, our collection offers something for every taste. Each rug is a versatile piece that can complement a wide range of interior styles, from classic to modern. Our artisanal rugs reflect a rich heritage and a forward-thinking approach to design.



# Craft | Jack

handwoven  
pure new wool  
total weight: ca 2600 gr/m<sup>2</sup>  
no pile due to flatweave structure

available sizes:  
140 x 200 4'7" x 6'7"  
160 x 230 5'3" x 7'6"  
200 x 280 6'7" x 9'2"  
250 x 350 8'2" x 11'6"  
no custom sizes

reversible

---

Discover the timeless charm of our handcrafted creations, where tradition meets artistry in every fiber. Embracing the beauty of irregularity, no two pieces are the same, making each item a unique masterpiece. The JACK shows us a timeless grid design. Versatile in use; the rug is reversible.



**Craft Jack bear brown**  
149405



**Craft Jack hunter green**  
149407





# Craft | Fundament

handwoven  
wool/jute/cotton  
total weight: ca 2500 gr/m<sup>2</sup>  
no pile due to flatweave structure

available sizes:

140 x 200 4'7" x 6'7"

160 x 230 5'3" x 7'6"

200 x 280 6'7" x 9'2"

250 x 350 8'2" x 11'6"

no custom sizes

reversible

---

Discover the timeless charm of our handcrafted creations, where tradition meets artistry in every fiber. Embracing the beauty of irregularity, no two pieces are the same, making each item a unique masterpiece. The FUNDAMENT shows us bold and monolith shapes in undyed, handspun wool combined with an earthy jute. Monumental designs made to master the room. Versatile in use; the rug is reversible.



**Craft Fundament wool white**  
149309



**Craft Fundament caramel**  
149311



**Craft Fundament chocolate cream**  
149305

# Craft | Plait

handwoven

jute/wool/cotton/viscose

total weight: ca 2500 gr/m<sup>2</sup>

no pile due to flatweave structure

available sizes:

140 x 200 4'7" x 6'7"

160 x 230 5'3" x 7'6"

200 x 280 6'7" x 9'2"

250 x 350 8'2" x 11'6"

no custom sizes

---

Discover the timeless charm of our handcrafted creations, where tradition meets artistry in every fiber. Embracing the beauty of irregularity, no two pieces are the same, making each item a unique masterpiece. Using the age-old technique Sumak weaving, the artisans made the refined series PLAIT; a double weave made from natural fibers. The back of the rug is made of cotton. The top features braided lines of wool and jute, accented with shiny viscose yarns.



**Craft Plait natural**  
049006



**Craft Plait denim**  
049008



**Craft Plait stone**  
049004





# Craft | Matter plain

handwoven  
wool/cotton  
total weight: ca 3200 gr/m<sup>2</sup>  
no pile due to flatweave structure

available sizes:

140 x 200 4'7" x 6'7"

160 x 230 5'3" x 7'6"

200 x 280 6'7" x 9'2"

250 x 350 8'2" x 11'6"

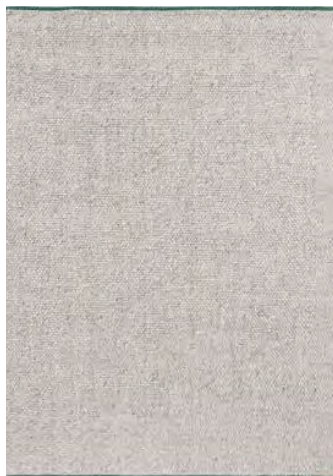
no custom sizes

---

Discover the timeless charm of our handcrafted creations, where tradition meets artistry in every fiber. Embracing the beauty of irregularity, no two pieces are the same, making each item a unique masterpiece. These methods, passed down through generations, ensure that each piece carries the legacy of its maker. Our designers combined this history and heritage with modern aesthetics to bring a unique touch to your home.



**Craft Matter Plain warm white**  
049106



**Craft Matter Plain ash grey**  
049107

# Craft | Matter check

handwoven  
wool/cotton  
total weight: ca 3200 gr/m<sup>2</sup>  
no pile due to flatweave structure

available sizes:

140 x 200 4'7" x 6'7"

160 x 230 5'3" x 7'6"

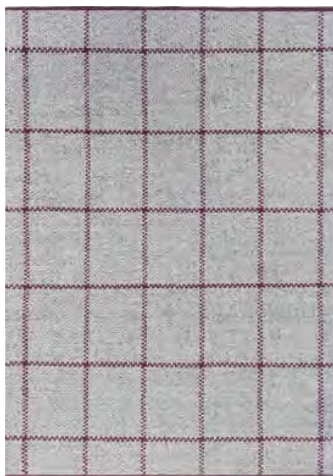
200 x 280 6'7" x 9'2"

250 x 350 8'2" x 11'6"

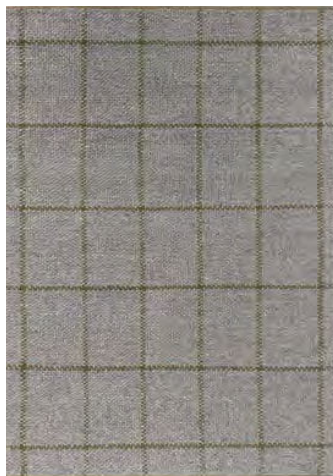
no custom sizes

---

Discover the timeless charm of our handcrafted creations, where tradition meets artistry in every fiber. Embracing the beauty of irregularity, no two pieces are the same, making each item a unique masterpiece. The series MATTER is a double weave, the back is made of cotton, the top features a basketweave in a window pane pattern made from undyed and dyed wool. The small borders are woven in a contrasting colour in cotton.



**Craft Matter Check**  
ash-stone red 049100



**Craft Matter Check slate-olive**  
049104





# Atelier | Twill

handwoven  
pure new wool  
total weight: ca 2500 gr/m<sup>2</sup>  
no pile due to flatweave structure

available sizes:  
140 x 200 4'7" x 6'7"  
160 x 230 5'3" x 7'6"  
200 x 280 6'7" x 9'2"  
250 x 350 8'2" x 11'6"  
custom sizes on request

reversible

---

Discover the rustic charm of our series ATELIER, woven by talented craftsmen in a double-weave technique. Featuring a classical pattern and elegant fringes, each rug translates timeless simplicity into your home decor. The herringbone design adds a touch of sophistication while maintaining a modest style that complements any space.



**Atelier Twill oyster**  
049201



**Atelier Twill mineral**  
049207

# Design Studio

Every company has its own unique formula that defines its identity and operations, and naturally, this formula is kept secret. However, we can reveal one of our key ingredients: our highly esteemed design studio. All Brink & Campman rugs are crafted in our design studio, which we proudly consider the heart of our company.

We have a deep passion for colour and texture. Inspired by modernistic aesthetics, the diverse qualities of yarns, nature, and cosmopolitan living, we infuse our designs with fun and playfulness or the most beautiful renditions of nature. Optimistic colours, subdued evergreens, bold patterns, graphic repeats, we like to show collections that explore all borders of the design world in our own unique way.

During the design process, the highly experienced designers work with great passion and creativity, while always keeping an eye on craftsmanship, quality, and sustainability. We believe that only through collaboration, along with our knowledge and expertise, we can achieve the high-quality rugs we love to create.

Our commitment to releasing a new collection every year provides us with both the opportunity and the challenge to continually develop, innovate, and improve.





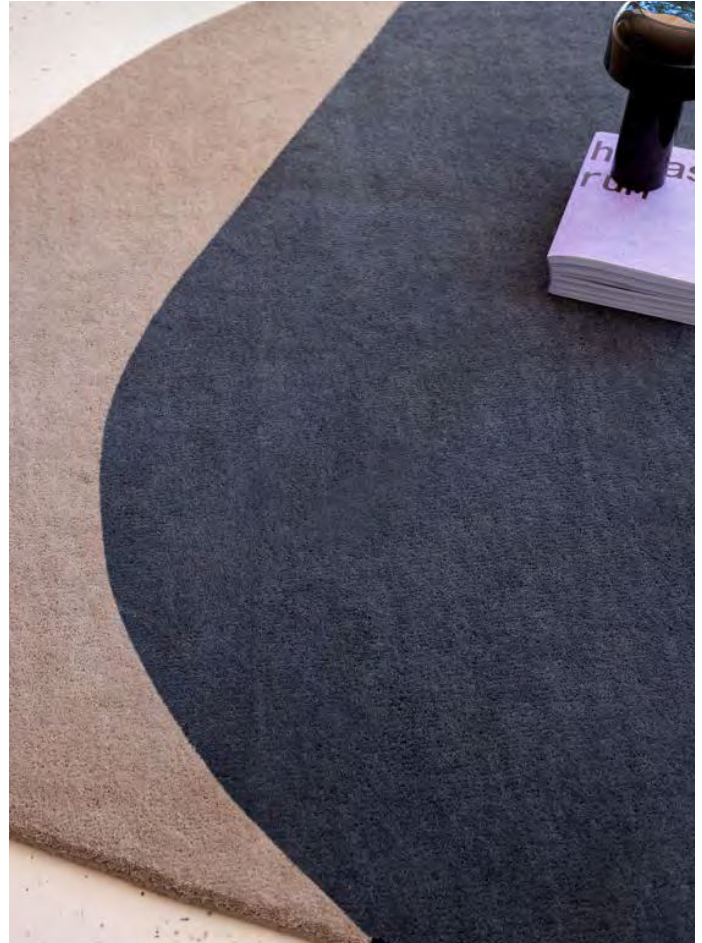
# Element | Arp

handtufted  
pure new wool  
total weight: ca 3800 gr/m<sup>2</sup>  
pile weight: ca 2500 gr/m<sup>2</sup>  
pile height: ca 9 mm

available sizes:  
160 x 175 5'3" x 5'9"  
200 x 220 6'7" x 7'3"  
233 x 255 7'8" x 8'4"  
250 x 274 8'2" x 9'0"  
custom sizes on request

---

Introducing the ELEMENT series: a stunning collection of three uniquely shaped rugs existing of intertwining forms in attractive, subdued colours that seamlessly blend into any space. These beautifully curved carpets can serve as striking focal points or elegantly define your sitting or lounge area — it's your choice!



**Element Arp natural**  
087601

**Element Arp blue**  
087608

# Element | Chad

handtufted  
pure new wool  
total weight: ca 3800 gr/m<sup>2</sup>  
pile weight: ca 2500 gr/m<sup>2</sup>  
pile height: ca 9 mm

available sizes:  
140 x 165 4'7" x 5'5"  
160 x 188 5'3" x 6'2"  
204 x 240 6'8" x 7'10"  
250 x 294 8'2" x 9'8"  
custom sizes on request

---

Introducing the ELEMENT series: a stunning collection of three uniquely shaped rugs existing of intertwining forms in attractive, subdued colours that seamlessly blend into any space. These beautifully curved carpets can serve as striking focal points or elegantly define your sitting or lounge area — it's your choice!



**Element Chad brown-blue**  
087705



**Element Chad grey-green**  
087704



Element Chad brown-blue 087705



# Element | Moore

handtufted  
pure new wool  
total weight: ca 3800 gr/m<sup>2</sup>  
pile weight: ca 2500 gr/m<sup>2</sup>  
pile height: ca 9 mm

available sizes:  
140 x 184 4'7" x 6'0"  
160 x 210 5'3" x 6'11"  
190 x 250 6'3" x 8'2"  
250 x 330 8'2" x 10'10"  
custom sizes on request

---

Introducing the ELEMENT series: a stunning collection of three uniquely shaped rugs existing of intertwining forms in attractive, subdued colours that seamlessly blend into any space. These beautifully curved carpets can serve as striking focal points or elegantly define your sitting or lounge area — it's your choice!



**Element Moore caramel**  
087801



**Element Moore moss**  
087807

# Decor | Echo

handtufted  
pure new wool  
total weight: ca 3500 gr/m<sup>2</sup>  
pile weight: ca 2000 gr/m<sup>2</sup>  
pile height: ca 10 mm

available sizes:

140 x 200 4'7" x 6'7"

160 x 230 5'3" x 7'6"

200 x 280 6'7" x 9'2"

250 x 350 8'2" x 11'6"

Ø 150 Ø 4'11"

Ø 200 Ø 6'7"

custom sizes on request

---

Step into a world of international interior allure with our playful and colourful rug collection DECOR! Inspired by the vibrant blend of what the world around us offers, these hand-tufted masterpieces are crafted with a lot of attention for detail. Dive into a fun array of bold shapes, vivid patterns, and eye-catching contrasts that bring your space to life.



**Decor Echo ochre**  
089706



**Decor Echo round ochre**  
089706



**Decor Echo forest**  
089707



**Decor Echo round forest**  
089707





# Decor | Echo

handtufted  
pure new wool  
total weight: ca 3500 gr/m<sup>2</sup>  
pile weight: ca 2000 gr/m<sup>2</sup>  
pile height: ca 10 mm

available sizes:

140 x 200 4'7" x 6'7"

160 x 230 5'3" x 7'6"

200 x 280 6'7" x 9'2"

250 x 350 8'2" x 11'6"

Ø 150 Ø 4'11"

Ø 200 Ø 6'7"

custom sizes on request

Step into a world of international interior allure with our playful and colourful rug collection DECOR! Inspired by the vibrant blend of what the world around us offers, these hand-tufted masterpieces are crafted with a lot of attention for detail. Dive into a fun array of bold shapes, vivid patterns, and eye-catching contrasts that bring your space to life.



**Decor Echo sand**  
089701



**Decor Echo round sand**  
089701



**Decor Echo pebble**  
089704



**Decor Echo round pebble**  
089704

# Decor | Shift

handtufted  
pure new wool  
total weight: ca 4500 gr/m<sup>2</sup>  
pile weight: ca 2500 gr/m<sup>2</sup>  
pile height: ca 12 mm

available sizes:

140 x 200 4'7" x 6'7"

160 x 230 5'3" x 7'6"

200 x 280 6'7" x 9'2"

250 x 350 8'2" x 11'6"

custom sizes on request

---

Step into a world of international interior allure with our playful and colourful rug collection DECOR! Inspired by the vibrant blend of what the world around us offers, these hand-tufted masterpieces are crafted with a lot of attention for detail. Dive into a fun array of bold shapes, vivid patterns, and eye-catching contrasts that bring your space to life.



**Decor Shift mineral sand**  
089901



**Decor Shift steel metal**  
089904



**Decor Shift multi beige**  
089903



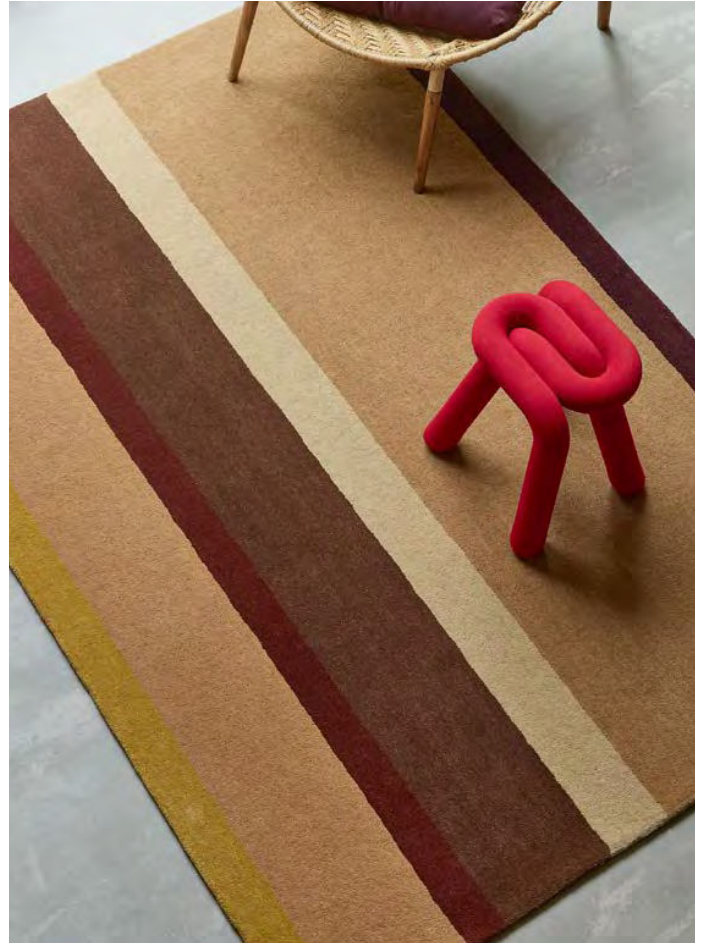


# Decor | Linear

handtufted  
pure new wool  
total weight: ca 4500 gr/m<sup>2</sup>  
pile weight: ca 2500 gr/m<sup>2</sup>  
pile height: ca 12 mm

available sizes:  
140 x 200 4'7" x 6'7"  
160 x 230 5'3" x 7'6"  
200 x 280 6'7" x 9'2"  
250 x 350 8'2" x 11'6"  
custom sizes on request

Step into a world of international interior allure with our playful and colourful rug collection DECOR! Inspired by the vibrant blend of what the world around us offers, these hand-tufted masterpieces are crafted with a lot of attention for detail. Dive into a fun array of bold shapes, vivid patterns, and eye-catching contrasts that bring your space to life.



**Decor Linear retro**  
089805



**Decor Linear ruby**  
089803



**Decor Linear earth**  
089801

# Decor | Rhythm

handtufted  
pure new wool  
total weight: ca 4500 gr/m<sup>2</sup>  
pile weight: ca 2500 gr/m<sup>2</sup>  
pile height: ca 12 mm

available sizes:

140 x 200 4'7" x 6'7"

160 x 230 5'3" x 7'6"

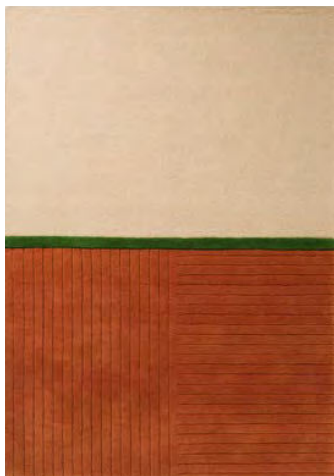
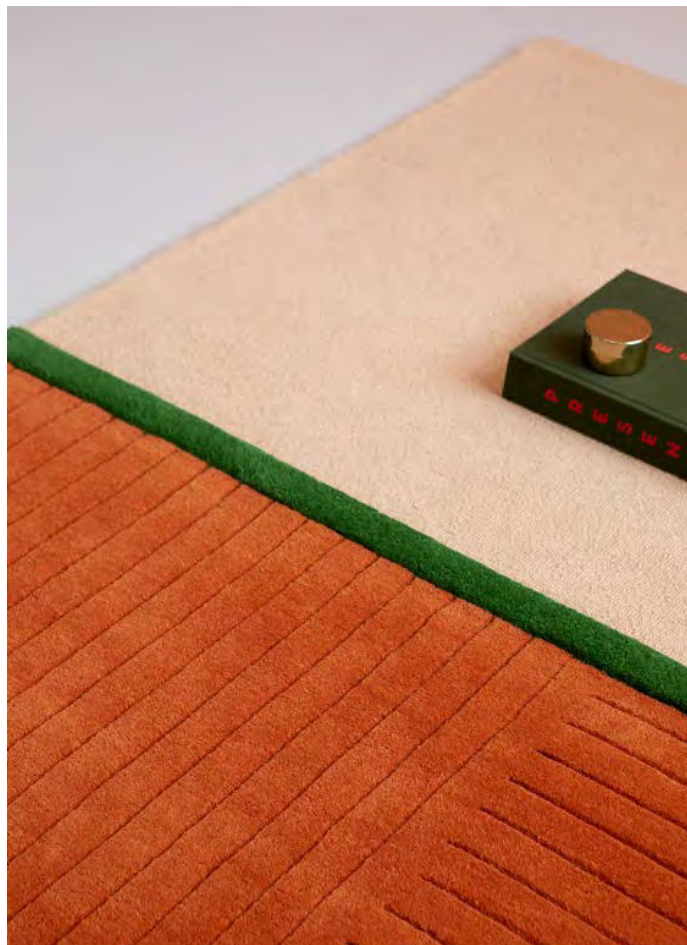
200 x 280 6'7" x 9'2"

250 x 350 8'2" x 11'6"

custom sizes on request

---

Step into a world of international interior allure with our playful and colourful rug collection DECOR! Inspired by the vibrant blend of what the world around us offers, these hand-tufted masterpieces are crafted with a lot of attention for detail. Dive into a fun array of bold shapes, vivid patterns, and eye-catching contrasts that bring your space to life.



**Decor Rhythm tangerine**  
098003





# Decor | Flow

handtufted  
pure new wool  
total weight: ca 4500 gr/m<sup>2</sup>  
pile weight: ca 2500 gr/m<sup>2</sup>  
pile height: ca 12 mm

available sizes:  
140 x 200 4'7" x 6'7"  
160 x 230 5'3" x 7'6"  
200 x 280 6'7" x 9'2"  
250 x 350 8'2" x 11'6"  
custom sizes on request

Step into a world of international interior allure with our playful and colourful rug collection DECOR! Inspired by the vibrant blend of what the world around us offers, these hand-tufted masterpieces are crafted with a lot of attention for detail. Dive into a fun array of bold shapes, vivid patterns, and eye-catching contrasts that bring your space to life.



**Decor Flow soft sand**  
091309



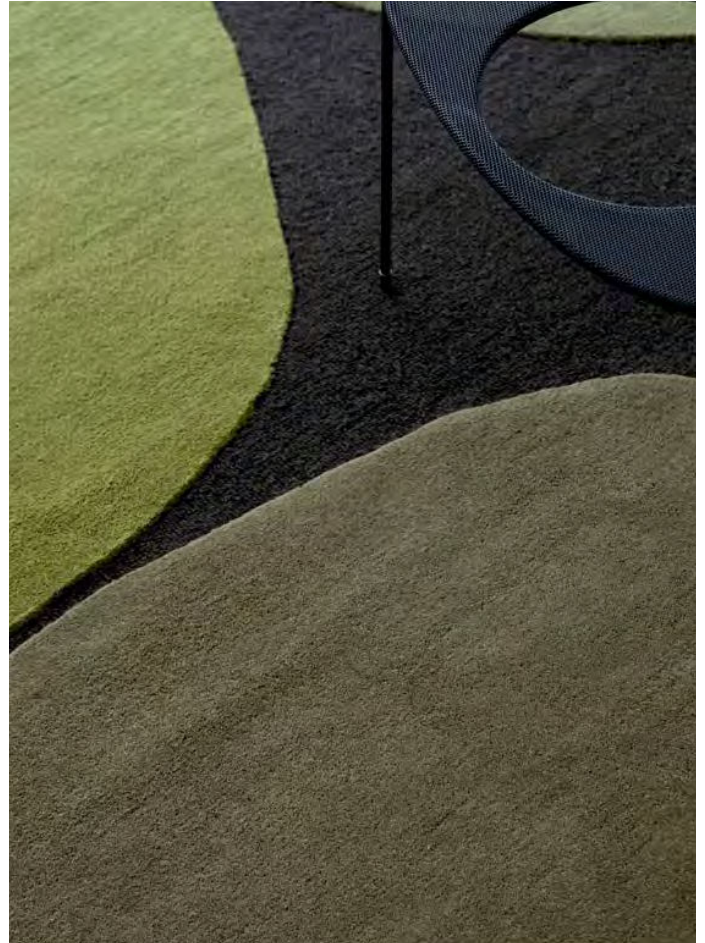
**Decor Flow caviar**  
091305

# Decor | Plateau

handtufted  
pure new wool  
total weight: ca 4500 gr/m<sup>2</sup>  
pile weight: ca 2500 gr/m<sup>2</sup>  
pile height: ca 12 mm

available sizes:  
140 x 200 4'7" x 6'7"  
160 x 230 5'3" x 7'6"  
200 x 280 6'7" x 9'2"  
250 x 350 8'2" x 11'6"  
custom sizes on request

Step into a world of international interior allure with our playful and colourful rug collection DECOR! Inspired by the vibrant blend of what the world around us offers, these hand-tufted masterpieces are crafted with a lot of attention for detail. Dive into a fun array of bold shapes, vivid patterns, and eye-catching contrasts that bring your space to life.



**Decor Plateau moss**  
091907



**Decor Plateau terra**  
091903





# Decor | Miller

handtufted  
pure new wool  
total weight: ca 4500 gr/m<sup>2</sup>  
pile weight: ca 2500 gr/m<sup>2</sup>  
pile height: ca 12 mm

available sizes:  
140 x 200 4'7" x 6'7"  
160 x 230 5'3" x 7'6"  
200 x 280 6'7" x 9'2"  
250 x 350 8'2" x 11'6"  
custom sizes on request

Step into a world of international interior allure with our playful and colourful rug collection DECOR! Inspired by the vibrant blend of what the world around us offers, these hand-tufted masterpieces are crafted with a lot of attention for detail. Dive into a fun array of bold shapes, vivid patterns, and eye-catching contrasts that bring your space to life.



**Decor Miller Spring**  
095108



**Decor Miller fall**  
095105

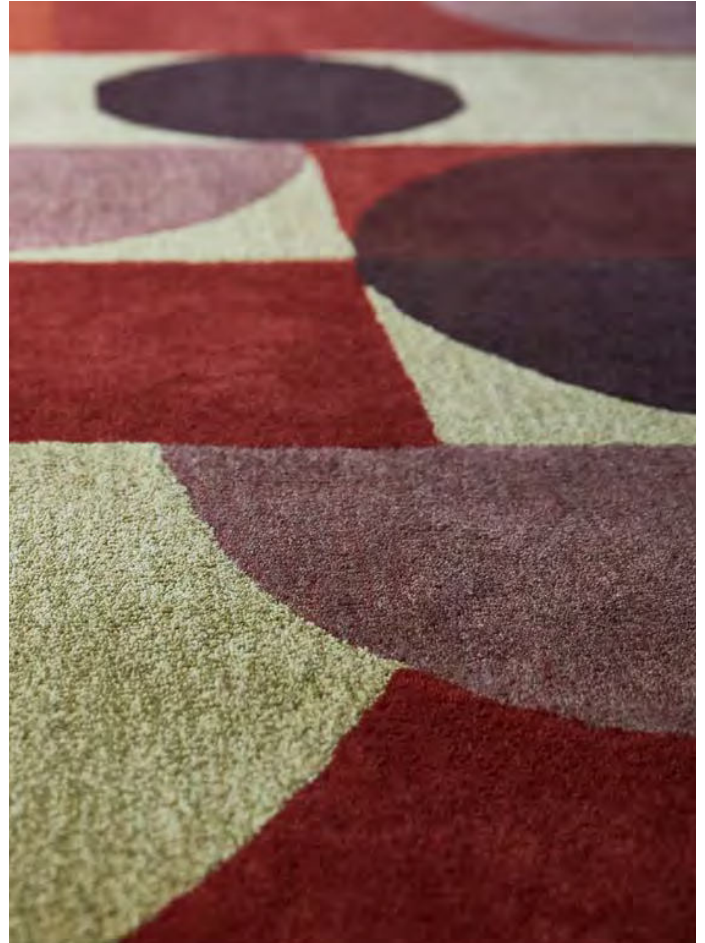
# Decor | Cosmo

handtufted  
pure new wool  
total weight: ca 4500 gr/m<sup>2</sup>  
pile weight: ca 2500 gr/m<sup>2</sup>  
pile height: ca 12 mm

available sizes:  
140 x 200 4'7" x 6'7"  
160 x 230 5'3" x 7'6"  
200 x 280 6'7" x 9'2"  
250 x 350 8'2" x 11'6"  
custom sizes on request

---

Step into a world of international interior allure with our playful and colourful rug collection DECOR! Inspired by the vibrant blend of what the world around us offers, these hand-tufted masterpieces are crafted with a lot of attention for detail. Dive into a fun array of bold shapes, vivid patterns, and eye-catching contrasts that bring your space to life.



**Decor Cosmo greens**  
095207



**Decor Cosmo red-pale green**  
095203





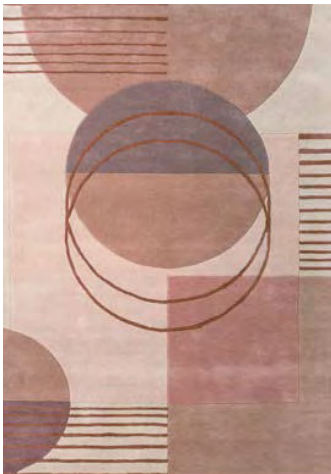
# Decor | Lola

handtufted  
pure new wool  
total weight: ca 4500 gr/m<sup>2</sup>  
pile weight: ca 2500 gr/m<sup>2</sup>  
pile height: ca 12 mm

available sizes:  
140 x 200 4'7" x 6'7"  
160 x 230 5'3" x 7'6"  
200 x 280 6'7" x 9'2"  
250 x 350 8'2" x 11'6"  
custom sizes on request

---

Step into a world of international interior allure with our playful and colourful rug collection DECOR! Inspired by the vibrant blend of what the world around us offers, these hand-tufted masterpieces are crafted with a lot of attention for detail. Dive into a fun array of bold shapes, vivid patterns, and eye-catching contrasts that bring your space to life.



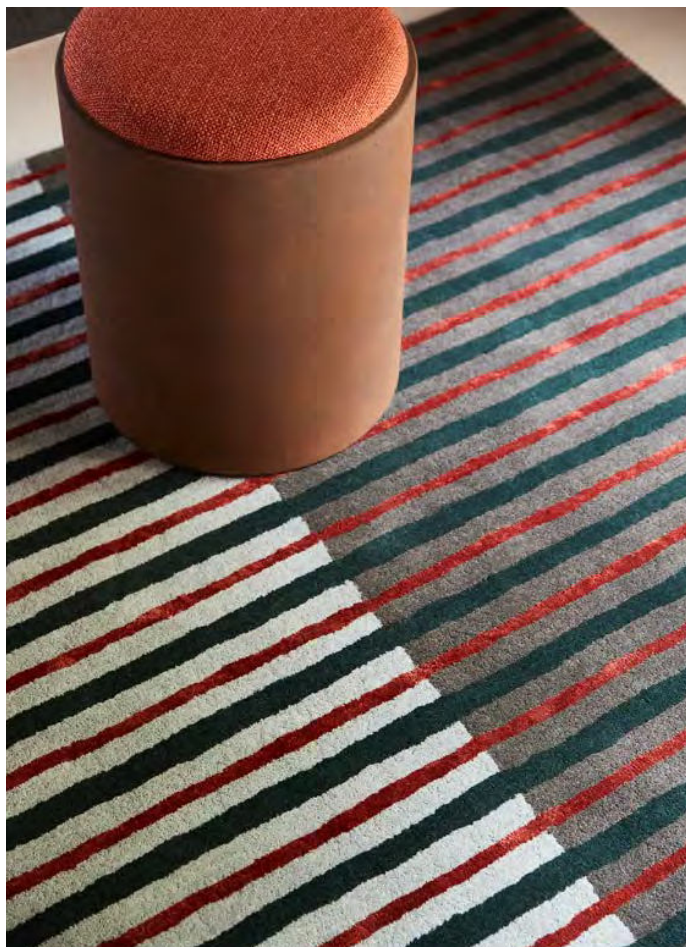
**Decor Lola**  
095403

# Decor | Proof

handtufted  
pure new wool/viscose  
total weight: ca 4500 gr/m<sup>2</sup>  
pile weight: ca 2500 gr/m<sup>2</sup>  
pile height: ca 12 mm

available sizes:  
140 x 200 4'7" x 6'7"  
160 x 230 5'3" x 7'6"  
200 x 280 6'7" x 9'2"  
250 x 350 8'2" x 11'6"  
custom sizes on request

Step into a world of international interior allure with our playful and colourful rug collection DECOR! Inspired by the vibrant blend of what the world around us offers, these hand-tufted masterpieces are crafted with a lot of attention for detail. Dive into a fun array of bold shapes, vivid patterns, and eye-catching contrasts that bring your space to life.



**Decor Proof**  
095907





# Decor | Scape

handtufted  
pure new wool  
total weight: ca 4500 gr/m<sup>2</sup>  
pile weight: ca 2500 gr/m<sup>2</sup>  
pile height: ca 12 mm

available sizes:  
140 x 200 4'7" x 6'7"  
160 x 230 5'3" x 7'6"  
200 x 280 6'7" x 9'2"  
250 x 350 8'2" x 11'6"  
custom sizes on request

---

Step into a world of international interior allure with our playful and colourful rug collection DECOR! Inspired by the vibrant blend of what the world around us offers, these hand-tufted masterpieces are crafted with a lot of attention for detail. Dive into a fun array of bold shapes, vivid patterns, and eye-catching contrasts that bring your space to life.



**Decor Scape wool white**  
095001

# Estella | Summer & Vases

handtufted  
pure new wool  
total weight: ca 4500 gr/m<sup>2</sup>  
pile weight: ca 2500 gr/m<sup>2</sup>  
pile height: ca 12 mm

available sizes:  
140 x 200 4'7" x 6'7"  
160 x 230 5'3" x 7'6"  
200 x 280 6'7" x 9'2"  
250 x 350 8'2" x 11'6"  
custom sizes on request

Bring life to your living space with our collection of bright, bold rugs. These hand-tufted masterpieces feature a vivid play of patterns inspired by evergreens, guaranteed to touch up any room and add a splash of personality. Perfect for elevating your home decor, these ESTELLA rugs combine vibrant designs with superior craftsmanship, making them an eye-catching centerpiece in any setting.



**Estella Summer**  
085200



**Estella Vases**  
089502





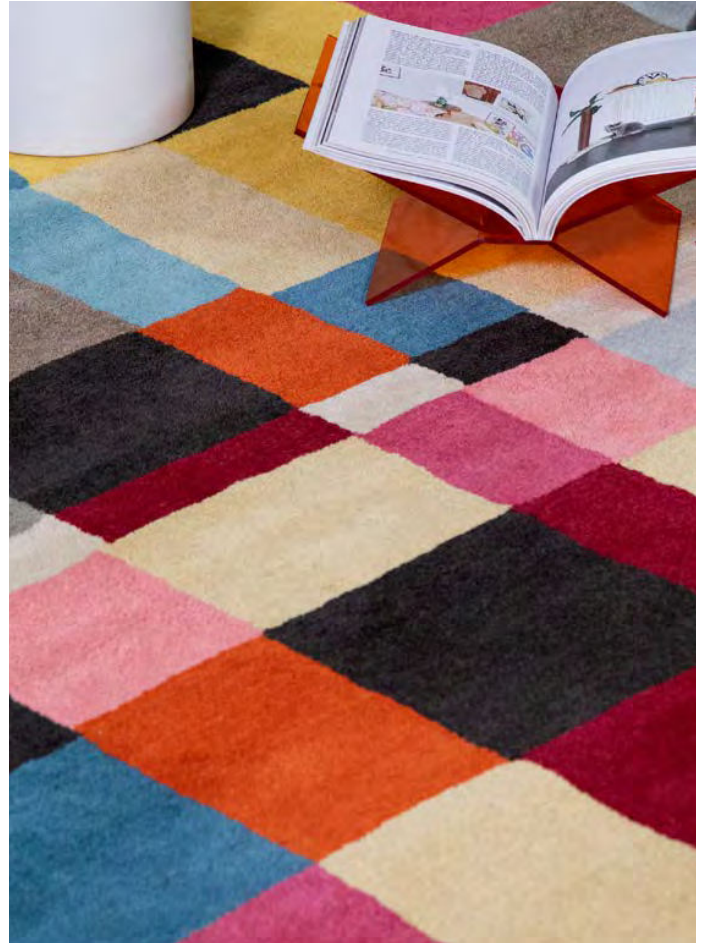
# Estella | Domino

handtufted  
pure new wool  
total weight: ca 4500 gr/m<sup>2</sup>  
pile weight: ca 2500 gr/m<sup>2</sup>  
pile height: ca 12 mm

available sizes:  
140 x 200 4'7" x 6'7"  
160 x 230 5'3" x 7'6"  
200 x 280 6'7" x 9'2"  
250 x 350 8'2" x 11'6"  
custom sizes on request

---

Bring life to your living space with our collection of bright, bold rugs. These hand-tufted masterpieces feature a vivid play of patterns inspired by evergreens, guaranteed to touch up any room and add a splash of personality. Perfect for elevating your home decor, these Estella rugs combine vibrant designs with superior craftsmanship, making them an eye-catching centerpiece in any setting.



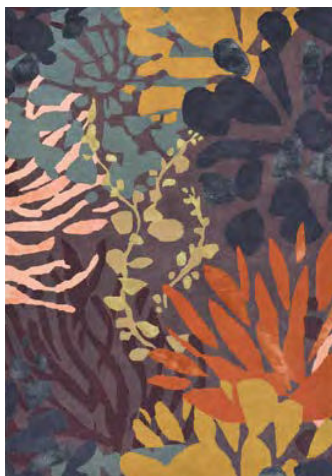
**Estella Domino**  
083901

# Estella | Submarine

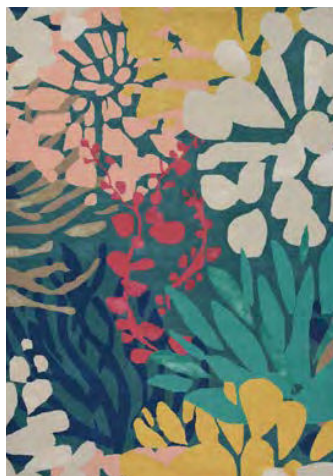
handtufted  
pure new wool/viscose  
total weight: ca 4500 gr/m<sup>2</sup>  
pile weight: ca 2500 gr/m<sup>2</sup>  
pile height: ca 12 mm

available sizes:  
140 x 200 4'7" x 6'7"  
160 x 230 5'3" x 7'6"  
200 x 280 6'7" x 9'2"  
250 x 350 8'2" x 11'6"  
custom sizes on request

Bring life to your living space with our collection of bright, bold rugs. These hand-tufted masterpieces feature a vivid play of patterns inspired by evergreens, guaranteed to touch up any room and add a splash of personality. Perfect for elevating your home decor, these Estella rugs combine vibrant designs with superior craftsmanship, making them an eye-catching centerpiece in any setting.



**Estella Submarine**  
089405



**Estella Submarine**  
089408





# Brands

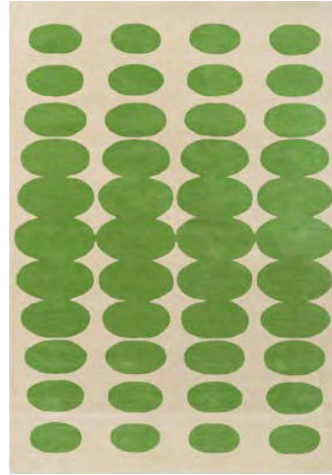
In addition to our unique Brink & Campman collection, we develop and produce collections for globally renowned brands in the home interior and fashion world.

Our design studio collaborates closely with the designers of these brands to create highly recognizable and distinctive collections. Each brand possesses its own unique style and undergoes individual developments, which keeps us motivated to craft the most beautiful and innovative collections. This cooperation ensures that we can proudly offer a wide range of rugs, where quality and attention to detail are key.

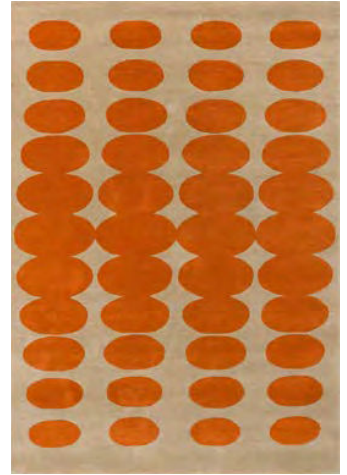
At Brink & Campman, quality is not just a word; it is a promise. Our rugs are made with the finest materials and meticulous craftsmanship, ensuring durability and timeless beauty. Whether it is the softness of high-grade wool, the versatile appeal of cotton, or the luster of viscose, every material is chosen with care to meet the highest standards of quality.

Explore our extensive range of rugs and experience the unparalleled quality and exquisite designs. Whether you are looking for a statement piece or a subtle accent, our collections offer something for every taste and style.

# Orla Kiely



Optical Oval green-cream  
157707



Optical Oval orange-sand  
157703



Flower Placement pumpkin-ecru  
158203



Sixties Stem yellow  
158106



Prism Flower mushroom-ecru  
158009



Prism Flower pink-terracotta  
158002



Spot Square walnut-lichen  
157907



Spot Square blue-navy  
157908



Giant Linear Stem walnut  
059401



Linear Stem olive  
060501





**Linear Stem slate**  
060505



**Giant Linear Stem**  
059404



**Solid Stem ecru**  
158309



**Solid Stem fern**  
158307



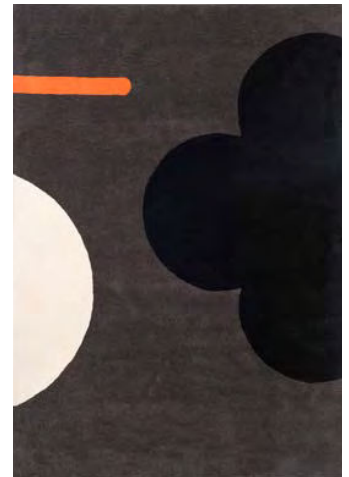
**Striped Tulip seagrass**  
160307



**Sprig Stem marine**  
063908



**Stem black**  
059803



**Geo Flower graphite**  
060605



**Multi Stem kingfisher**  
059507



**Classic Multi Stem**  
059505



**Giant Multi Stem**  
059205



**Flower Spot ecru-black**  
158409



**Sunflower yellow**  
060006



**Sunflower pink**  
060005



# Morris & Co.



**Golden Lily green-red**  
130107



**Hyacinth natural**  
130201



**Compton trellis**  
130307



**Honeysuckle & Tulip teal**  
130407



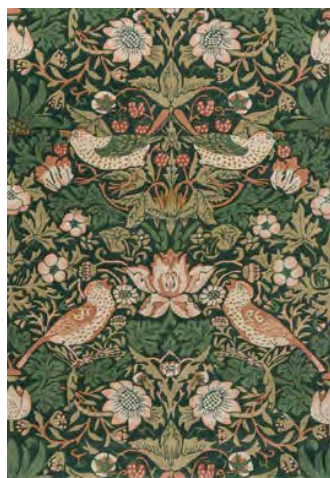
**Honeysuckle & Tulip woad-thyme**  
130408



**Montreal forest**  
130507



**Montreal russet**  
130500



**Strawberry Thief forest**  
027707



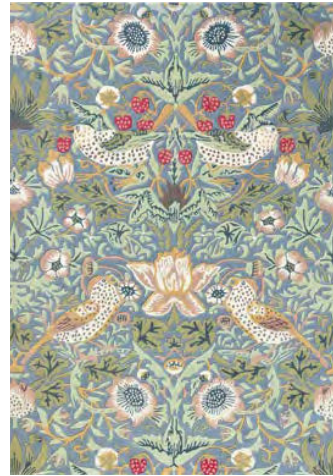
**Strawberry Thief grape**  
027705



**Strawberry Thief crimson**  
027700



**Strawberry Thief indigo**  
027708



**Strawberry Thief slate**  
027718



**Pure Strawberry Thief ink**  
028105



**Pimpernel indigo**  
028818



**Pimpernel bullrush**  
028808



**Pimpernel aubergine**  
028805



**Pure Pimpernel linen**  
028701



**Seaweed teal**  
127008



**Seaweed ink**  
028008



**Artichoke mineral**  
127108



**Bird tump green**  
128307



**Wilhelmina linen-mustard**  
127401



**Bower twining vine green**  
128207

# Laura Ashley



**Aylworth Trail terracotta-orange**  
078603



**Aylworth Trail fern green**  
078607



**Coleby Petals ivory cream**  
078809



**Coleby Petals chalk pink**  
078802



**Coleby Petals hedgerow green**  
078807



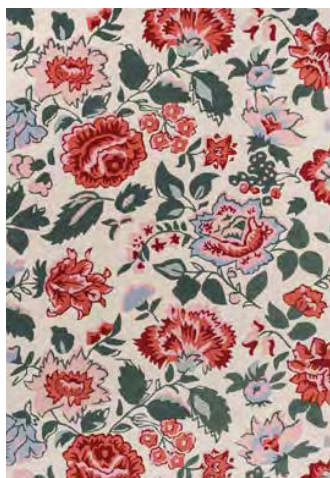
**Endale soft truffle**  
079701



**Summer Palace cranberry-grape**  
081200



**Summer Palace truffle-seaspray**  
081201



**Wendling Floral poppy red**  
083100



**Wendling Floral heather purple**  
083104





**Pussy Willow hedgerow green**  
079807



**Pussy Willow dove grey**  
079804



**Gosford natural-sage green**  
081307



**Gosford natural-sage green round**  
081307



**Gosford cranberry**  
081300



**Gosford cranberry round**  
081300



**Parterre sage**  
081707



**Catarina fern**  
080807



**Redbrook silver**  
081804



**Redbrook silver round**  
081804



**Redbrook duck egg**  
081807



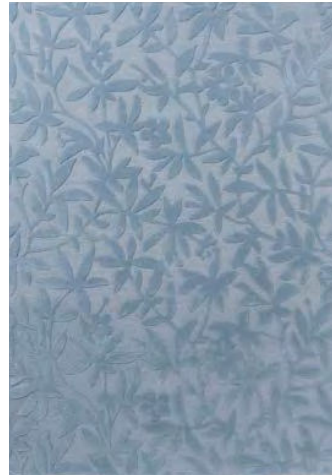
**Redbrook duck egg round**  
081807



**Cleavers natural**  
080901



**Cleavers natural round**  
080901



**Cleavers seaspray**  
080908



**Cleavers seaspray round**  
080908



**Josette dove grey**  
081401



**Newborough steel**  
081604



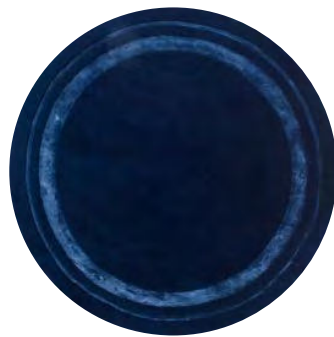
**Newborough pale gold**  
081606



**Silchester pale sage**  
081107



**Redbrook midnight**  
081808



**Redbrook midnight round**  
081808



**Rye natural**  
081901



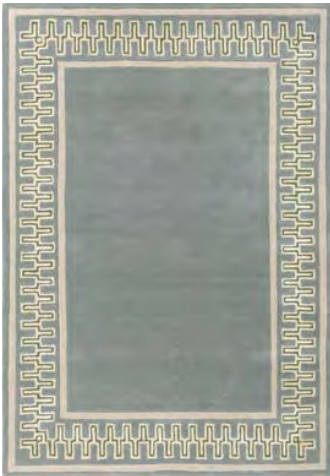
# Sanderson



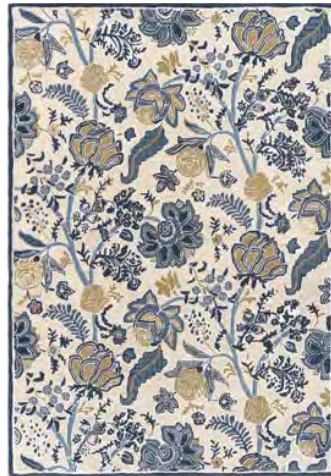
Anaar flax  
148001



Anaar forest green  
148007



Linnean porcelain  
148408



Shalimar china blue  
148508



Matmi avocado  
148107



Anthos red-indigo  
148200



Jackfruit turmeric-indigo  
148708



Jackfruit cherry-alabaster  
148705



Rose & Peony birch  
045001



Rose & Peony red  
045000



**Rose & Peony cerise**  
045005



**Dahlia & Rosehip teal**  
050608



**Foraging indigo**  
146618



**Foraging indigo round**  
146618



**Stapleton Park navy-burnt orange**  
045318



**Stapleton Park rosewood**  
045302



**Poppies red-orange**  
045700



**Amanpuri stone**  
145101



**Ancient Canopy forest green**  
146708



**Elsdon linden**  
044006



**Robin's Wood russet brown**  
146501



**Robin's Wood russet brown round**  
146501



Robin's Wood forest green  
146508



Robin's Wood forest green  
round 146508

# Scion



Lohko Stripe pebble  
123101



Lohko Stripe charcoal  
123105



Going Lohko sky  
123218



Going Lohko dusk  
123201



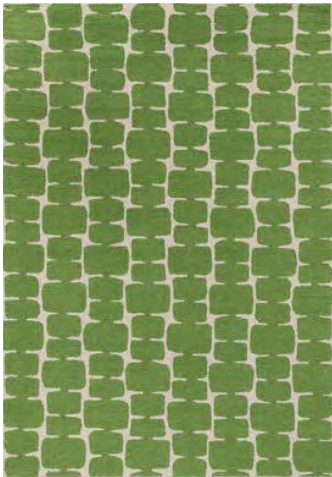
Saku olive  
123417



Arlo brick  
124103



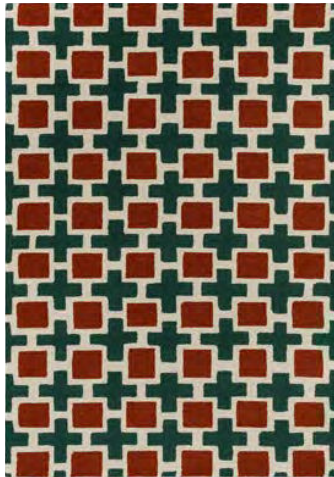
Little Lohko pebble  
124201



Little Lohko juniper  
124207

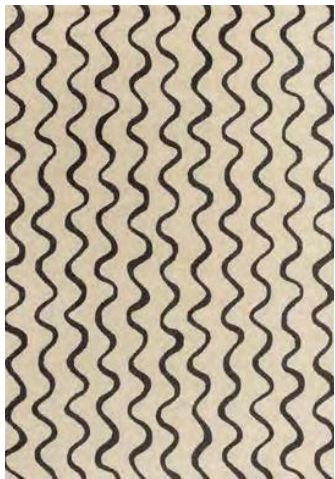


Little Lohko indigo  
124208

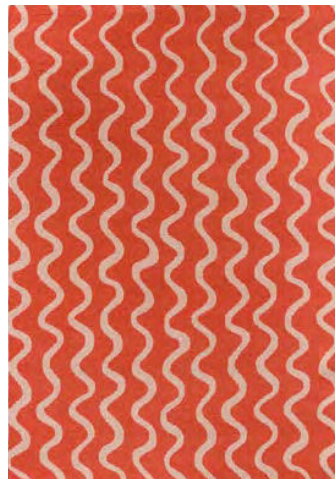


Hatch rust  
124903





**Ribbon charcoal**  
124305



**Ribbon coral**  
124300



**Billow lichen**  
124606



**Jackfruit and the beanstalk  
chai-sage** 125706



**Epsilon charcoal**  
023801



**Composition papaya**  
023706



**Composition amber**  
023701



**Uteki slate**  
023604



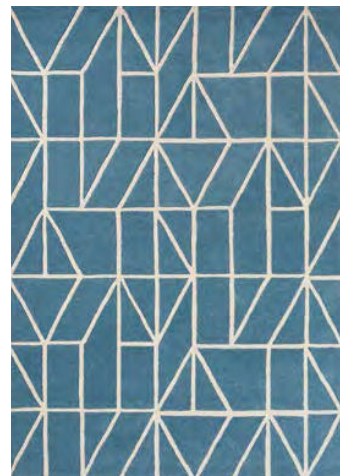
**Lohko honey**  
025806



**Kaleido pop**  
026000



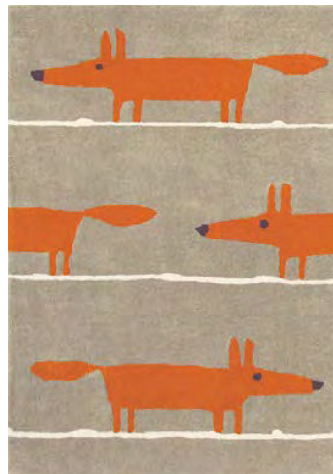
**Lintu dandelion**  
024405



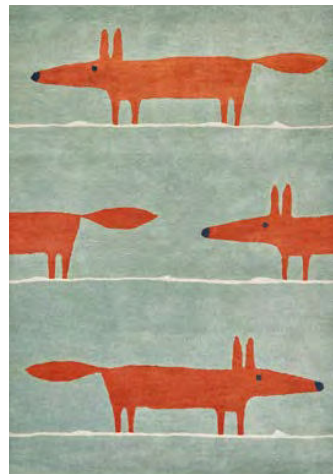
**Viso denim**  
024008



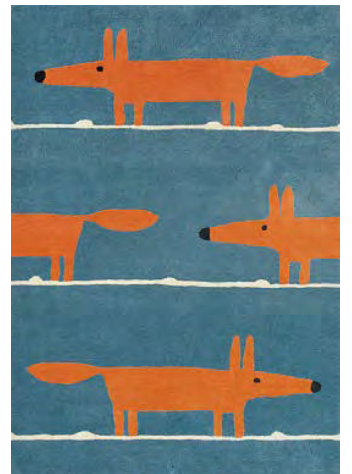
**Raita taupe**  
024701



**Mr Fox cinnamon**  
025303



**Mr Fox mint-poppy**  
025313



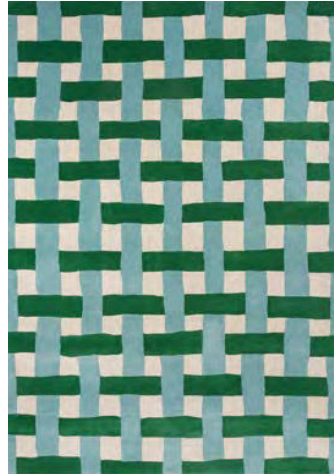
**Mr Fox denim**  
025318

# Harlequin





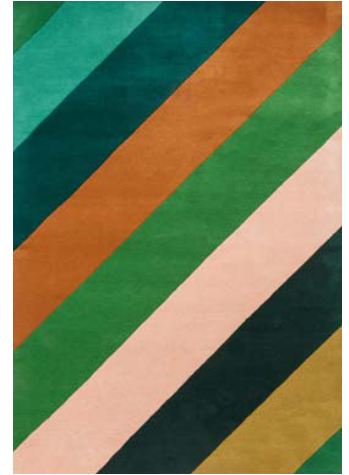
**Basketweave coral-rose**  
144102



**Basketweave emerald-aquamarine** 144107



**Paper Straw peridot**  
144317



**Sherbet Stripe emerald/amber**  
144417



**Wilderness peridot-emerald**  
144507



**Wonderland Floral amber-lapis**  
144713



**Foresta pebble-sand**  
143511



**Foresta rosewood-huckleberry**  
143503



**Floreale maize**  
044906



**Floreale fuchsia**  
044905



**Dahlia coral-wilderness**  
142408



**Dahlia fuchsia-palm**  
142402



**Torillo emerald-azul**  
143907



**Torillo sky-cornflower**  
143908



**Torillo cornflower-walnut**  
143905



**Bodega stone**  
040504



**Blocks fern**  
141907



**Blocks slate**  
141904



**Shore truffle**  
040605



**Calla pomegranate/clementine**  
143403



**Sumi Reflect cornflour-spice**  
143705



**Sumi Reflect fern-pistachio**  
143717



**Calathea shiitake-wild water**  
142905



**Calathea amber-brazilian rosewood** 142907



**Popova caramel-slate-shell**  
143101



**Elliptic emerald**  
140307



**Kelapa zest**  
040307



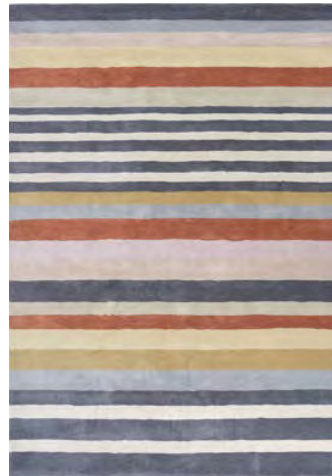
**Melora positano-succulent-gold**  
142702



**Diffinity oyster**  
140001



**Diffinity topaz**  
140006



**Rosita harissa**  
140402



**Rosita putty**  
140404



**Rhytym saffron**  
040906



**Zeal pewter**  
043004



**Yasuni cerise**  
040405

# Wedgwood



**Folia 2.0 mink round**  
038902



**Folia 2.0 cool grey round**  
038904



**Folia stone round**  
038301



**Folia grey round**  
038305



**Folia 2.0 mink**  
038902



**Folia 2.0 cool grey**  
038904



**Folia stone**  
038301



**Folia grey**  
038305



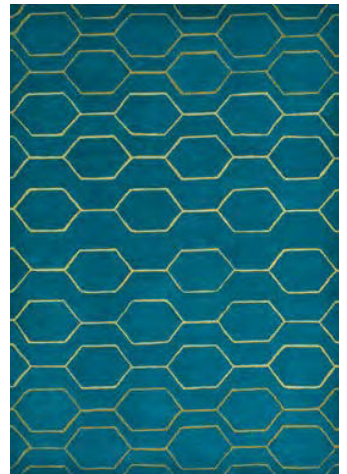
**Renaissance beige**  
039001



**Renaissance blue**  
039008



**Arris grey**  
037304



**Arris teal**  
037307





**Hummingbird grey**  
037804



**Hummingbird blue**  
037808



**Hummingbird navy**  
037818



**Paeonia coral**  
037902



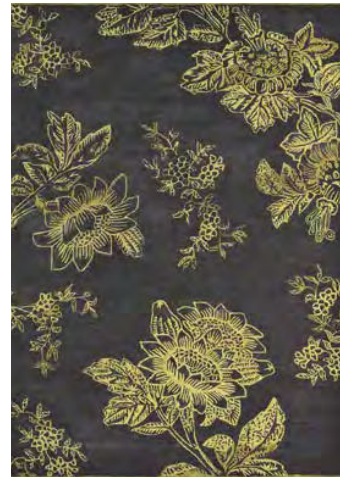
**Fabled Floral grey**  
037504



**Fabled Floral navy**  
037508



**Tonquin blue**  
037008



**Tonquin charcoal**  
037005



**Waterlily midnight pond**  
038608



**Waterlily midnight pond round**  
038608



**Waterlily dusty rose**  
038602



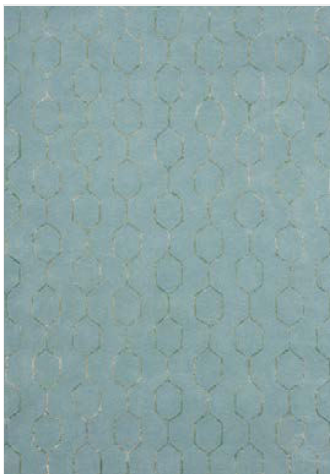
**Waterlily dusty rose round**  
038602



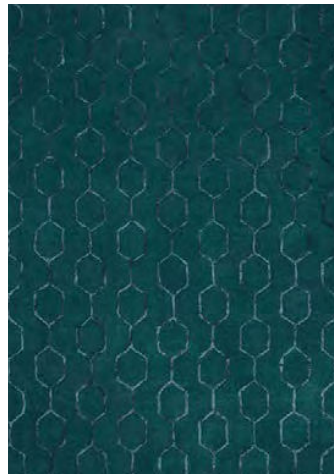
**Wild Strawberry tonal**  
038201



**Wild Strawberry cream**  
038108



**Gio mineral**  
039108



**Gio teal**  
039107



**Gio noir**  
039105



# Ted Baker



**Shaped Magnolia light pink**  
162302



**Shaped Magnolia burgundy**  
162303



**Linear Floral blue**  
162508



**Feathers natural**  
162404



**Landscape Toile light pink**  
162602



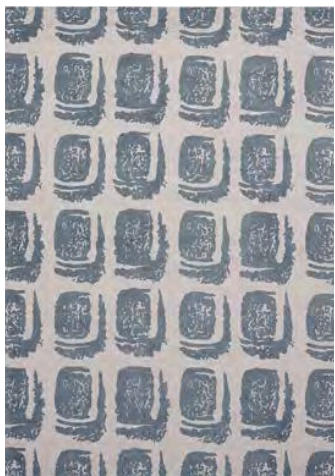
**Landscape Toile light blue**  
162608



**Baroque yellow**  
162906



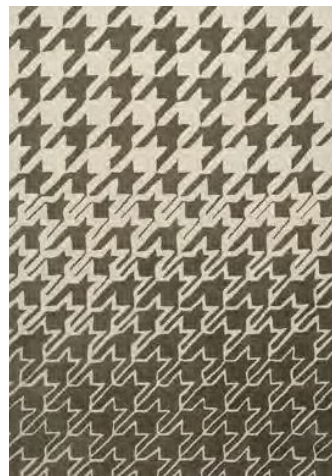
**Baroque pink**  
162902



**Woodblock grey**  
163001



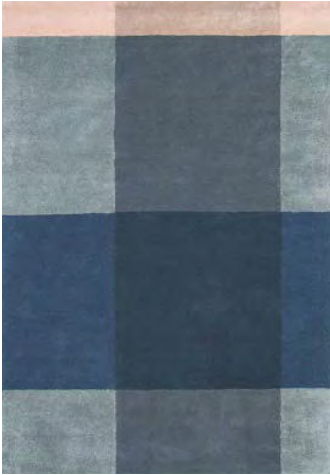
**Woodblock red**  
163003



**Houndstooth grey**  
162804



**Houndstooth dark blue**  
162808



**Plaid grey**  
057804



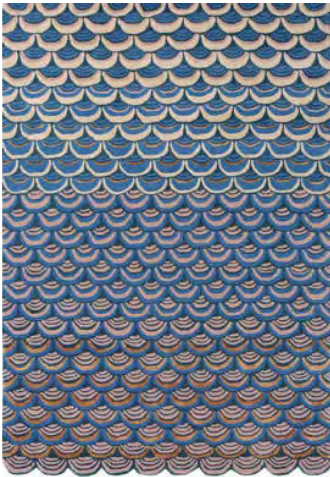
**Kinmo pink**  
056802



**Kinmo green**  
056807



**Mosaic light purple**  
057605



**Masquerade blue**  
160008



**Masquerade blue round**  
160008



**Jardin pink**  
160902



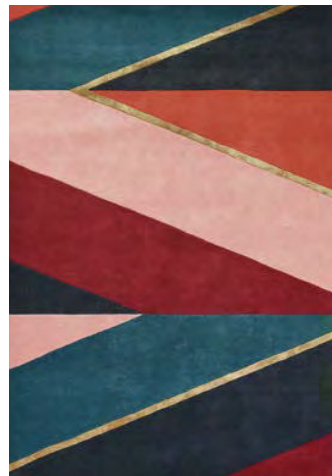
**Jardin blue**  
160908



**Sahara pink**  
056102



**Sahara pink round**  
056102



**Sahara burgundy**  
056105



**Sahara burgundy round**  
056105



**Zodiac Aries**  
161105



**Zodiac Taurus**  
161205



**Zodiac Gemini**  
161305



**Zodiac Cancer**  
161405



**Zodiac Leo**  
161505



**Zodiac Virgo**  
161605



**Zodiac Libra**  
161705



**Zodiac Scorpio**  
161805



**Zodiac Sagittarius**  
161905



**Zodiac Capricorn**  
162005



**Zodiac Aquarius**  
162105



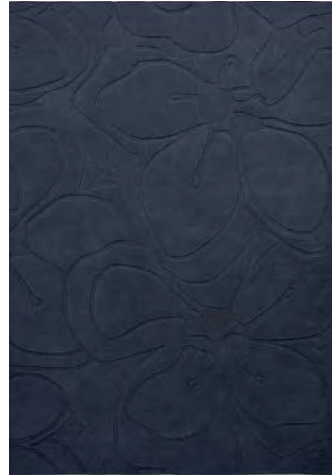
**Zodiac Pisces**  
162205



**Romantic Magnolia cream**  
162701



**Romantic Magnolia pink**  
162702



**Romantic Magnolia dark blue**  
162708



**Tranquility beige**  
056001



**Tranquility beige round**  
056001



**Tranquility aubergine**  
056005



**Tranquility aubergine round**  
056005

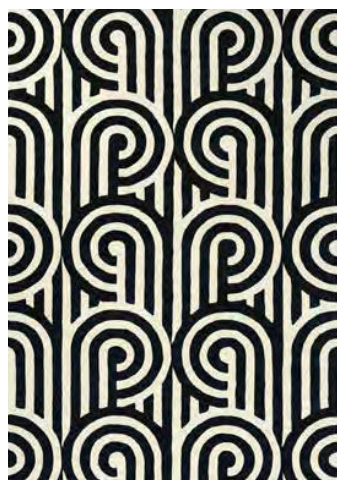
# Florence Broadhurst



Tortoiseshell stripe jade  
039808



Japanese bamboo jade  
039507



Turnabouts black  
039205



Turnabouts claret  
039200



Japanese Fans ivory  
039301



Japanese Fans gold  
039305



Floral 300 charcoal  
039604



Floral 300 poppy  
039600



Japanese Floral oyster  
039701



Japanese Floral midnight  
039708



**Waterwave Stripe citron**  
039906



**Waterwave Stripe pearl**  
039908



**Slub mist**  
039401



**Slub charcoal**  
039405

# Brink & Campman Collection Overview '26

## Jazz



Jazz Plush  
Carbon  
158504



Jazz Dense  
Carbon  
158904



Jazz Plush  
Pumpkin  
158503



Jazz Dense  
Pumpkin  
158903



Jazz Plush  
Natural  
158501



Jazz Dense  
Natural  
158901



Jazz Plush  
Storm  
158528



Jazz Dense  
Storm  
158928

## Sprout



Sprout  
Ceylon Sand  
013326



Sprout  
Dusty Ground  
013319



Sprout  
Burnt Tangerine  
013316



Sprout  
Feather Coat  
013301



Sprout  
Terracotta  
013323



Sprout  
Cobalt Eclipse  
013308



Spring  
Natural  
059111



Spring  
Calendula  
059103

## Spring



Spring  
Moss  
059137



Spring  
Pumpkin  
059123



Spring  
Evergreen  
059107



Spring  
Storm  
059128



Young  
Natural  
061801



Young  
Driftwood  
061805



Young  
Chutney  
061806

## Young

## Origin



Origin High  
Mist  
066104



Origin Loop  
Mist  
066204



Origin Low  
Greige  
066001



Origin High  
Greige  
066101



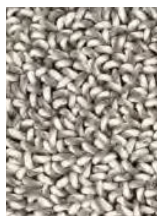
Origin Loop  
Greige  
066201



Origin Low  
Stone  
066005



Origin High  
Stone  
066105



Origin Loop  
Stone  
066205

## Arch



Arch  
Glacier  
067004



Arch  
Natural  
067001



Arch  
Chutney  
067006



Arch  
Driftwood  
067005

## Pop Art



Pop Art  
Glacier  
066904



Pop Art  
Natural  
066901



Pop Art  
Steel  
066914



Pop Art  
Chutney  
066907

## Dots



Pop Art  
Coral  
066902



Pop Art  
True Blue  
066908



Pop Art  
Amber  
066926



Pop Art  
Tomato  
066900



Dots  
Moss  
170537



Dots  
Pumpkin  
170523



Dots  
Calendula  
170213



Dots  
Storm  
170528

## Rocks



Dots  
Terrazzo  
170411



Dots  
Terrazzo  
170401



Dots  
Natural  
170501



Dots  
Frost  
170504



Dots  
Soil  
170405



Rocks  
Moss  
070537



Rocks  
Pumpkin  
070523



Rocks  
Calendula  
070213



Rocks  
Storm  
070528



Rocks  
Confetti  
070411



Rocks  
Terrazzo  
070401



Rocks  
Natural  
070501



Rocks  
Frost  
070504



Rocks  
Soil  
070405

## Twinset Urban



Twinset Urban  
Oyster  
022104

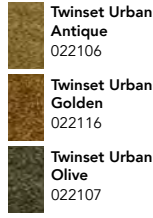


Twinset Urban  
Taupe  
022101

Twinset Urban  
Tan  
022152

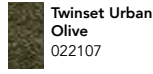


Twinset Urban  
Silver  
022131

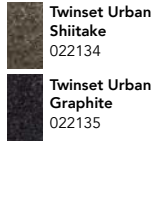


Twinset Urban  
Antique  
022106

Twinset Urban  
Golden  
022116



Twinset Urban  
Olive  
022107



Twinset Urban  
Shiitake  
022134

Twinset Urban  
Graphite  
022135

## Twinset Terrain

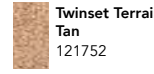


Twinset Terrain  
Shiitake  
121734



Twinset Terrain  
Oyster  
121704

Twinset Terrain  
Taupe  
121701



Twinset Terrain  
Tan  
121752



Twinset Terrain  
Silver  
121731

Twinset Terrain  
Antique  
121706



Twinset Terrain  
Golden  
121716



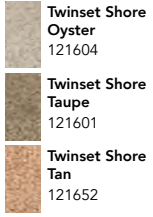
Twinset Terrain  
Olive  
121707

Twinset Terrain  
Graphite  
121735

## Twinset Shore

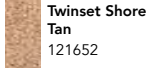


Twinset Shore  
Olive  
121607

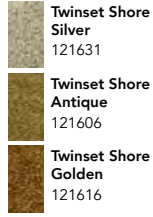


Twinset Shore  
Oyster  
121604

Twinset Shore  
Taupe  
121601

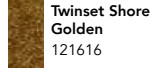


Twinset Shore  
Tan  
121652

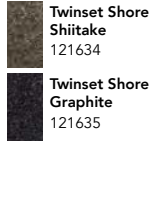


Twinset Shore  
Silver  
121631

Twinset Shore  
Antique  
121606



Twinset Shore  
Golden  
121616



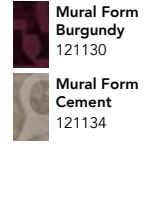
Twinset Shore  
Shiitake  
121634

Twinset Shore  
Graphite  
121635

## Mural Form



Mural Form  
Forest  
121107



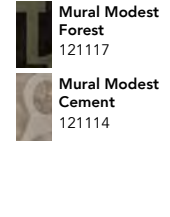
Mural Form  
Burgundy  
121130

Mural Form  
Cement  
121134

## Mural Modest



Mural Modest  
Burgundy  
121100



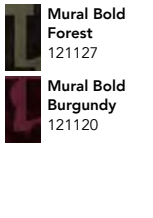
Mural Modest  
Forest  
121117

Mural Modest  
Cement  
121114

## Mural Bold



Mural Bold  
Cement  
121104



Mural Bold  
Forest  
121127

Mural Bold  
Burgundy  
121120

## Shade Low



Shade Low  
Silver-Polar night  
010104



Shade Low  
Beige-Dark Chocolate  
010101



Shade Low  
Umber-Tobacco  
010103



Shade Low  
Olive-Deep Forest  
010107



Shade Low  
Brass-Indigo  
010108



Shade Low  
Plum-Fig  
010100

## Shade High



Shade High  
Lemon-Gold  
010106



Shade High  
Electric Blue-  
Aubergine 010118



Shade High  
Silver-Polar night  
011904



Shade High  
Beige-Dark Chocolate  
011901



Shade High  
Umber-Tobacco  
011903



Shade High  
Olive-Deep Forest  
011907



Shade High  
Brass-Indigo  
011908



Shade High  
Plum-Fig  
011900

## Frame



Shade High  
Lemon-Gold  
011906



Shade High  
Electric Blue-  
Aubergine 011918



Frame  
natural  
129311



Frame  
mustard  
129306



Frame  
Leaf  
129307



Frame  
Brick  
129300

## Nest



Nest  
Ink  
129428



Nest  
Leather  
129403

## Pebble



**Pebble  
Light Natural**  
129811



**Pebble  
Natural**  
129801



**Pebble  
Frost**  
129804



**Pebble  
Moss**  
129837



**Pebble  
Pumpkin**  
129823

## Marble



**Marble  
Weather**  
029501



**Marble  
Calendula**  
029503



**Marble  
Acid**  
029517



**Marble  
Storm**  
029528



**Marble  
Moss**  
029537



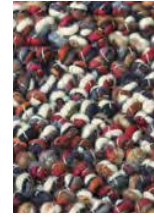
**Marble  
Pumpkin**  
029523



**Marble  
Carbon**  
029534



**Marble  
Forest**  
029547



**Marble  
Russet**  
029500

## Grain



**Grain  
Light Natural**  
013501



**Grain  
Coral**  
013502



**Grain  
Glacier**  
013504



**Grain  
Driftwood**  
013505

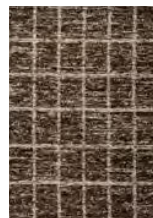


**Grain  
Chutney**  
013506

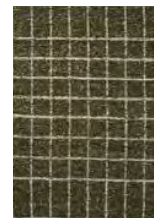


**Grain  
Lemon**  
013507

## Craft Jack



**Craft Jack  
Bear Brown**  
149405



**Craft Jack  
Hunter Green**  
149407

## Craft Fundament



**Craft Fundament  
Wool White**  
149309



**Craft Fundament  
Caramel**  
149311

## Craft Plait



**Craft Fundament  
Chocolate Cream**  
149305



**Craft Plait  
Natural**  
049006



**Craft Plait  
Denim**  
049008



**Craft Plait  
Stone**  
049004

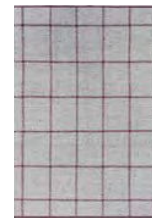
## Craft Matter



**Craft Matter Plain  
Warm White**  
049106



**Craft Matter Plain  
Ash Grey**  
049107



**Craft Matter Check  
Ash-Stone Red**  
049100



**Craft Matter Check  
Slate-Olive**  
049104

## Atelier Twill



**Atelier Twill  
Oyster**  
049201



**Atelier Twill  
Mineral**  
049207

## Element Arp



**Element Arp  
Natural**  
087601



**Element Arp  
Blue**  
087608

## Element Chad



**Element Chad  
Brown-Blue**  
087705



**Element Chad  
Grey-Green**  
087704

## Element Moore



**Element Moore  
Caramel**  
087801



**Element Moore  
Moss**  
087807

## Decor



Decor Echo  
Ochre  
089706



Decor Echo Round  
Ochre  
089706



Decor Echo  
Forest  
089707



Decor Echo Round  
Forest  
089707



Decor Echo  
Sand  
089701



Decor Echo Round  
Sand  
089701



Decor Echo  
Pebble  
089704



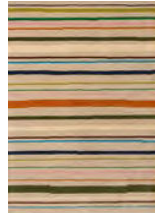
Decor Echo Round  
Pebble  
089704



Decor Shift  
Mineral Sand  
089901



Decor Shift  
Steel Metal  
089904



Decor Shift  
Multi Beige  
089903



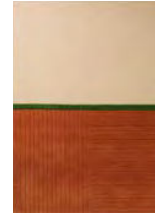
Decor Linear  
Retro  
089805



Decor Linear  
Ruby  
089803



Decor Linear  
Earth  
089801



Decor Rhythm  
Tangerine  
098003



Decor Flow  
Soft Sand  
091309



Decor Flow  
Caviar  
091305



Decor Plateau  
Moss  
091907



Decor Plateau  
Terra  
091903



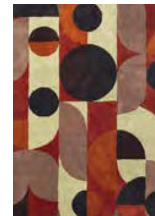
Decor Miller  
Spring  
095108



Decor Miller  
Fall  
095105



Decor Cosmo  
Greens  
095207



Decor Cosmo  
Red-Pale Green  
095203

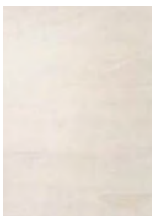


Decor Lola  
095403

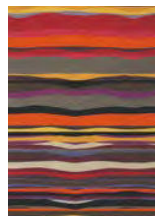
## Estella



Decor Proof  
095907



Decor Scape  
Wool White  
095001



Estella Summer  
085200



Estella Vases  
089502



Estella Domino  
083901



Estella Submarine  
089405



Estella Submarine  
089408



# BRINK & CAMPMAN

Albert Schweitzerstraat 3  
7131 PG Lichtenvoorde | The Netherlands  
tel +31 (0)544 390 400  
brinkandcampman.com  
info@brinkandcampman.com



## Sales offices

The Netherlands:	tel + 31 (0)544 390 422
Europe:	tel + 31 (0)544 390 429
Germany, Austria, Switzerland:	tel + 31 (0)544 390 430
Americas, Asia, Africa, Oceania:	tel + 31 (0)544 390 428

## The Netherlands, Germany, Austria & Switzerland

Robert Apeldoorn  
m +31 (0)6 101 329 64  
rapeldoorn@brinkandcampman.com

## Export

Jasper Kempers  
m +31 (0)6 128 157 72  
jkempers@brinkandcampman.com

We have partners in the following countries:

Australia	Greece	Portugal
Austria	Hong Kong	Romania
Azerbaijan	Hungary	Serbia
Belgium	Ireland	Singapore
Bolivia	Italy	Slovakia
Brazil	Japan	South Africa
Bulgaria	Kazakhstan	South-East Asia
Canada	Korea	Spain
China	Kuwait	Sweden
Colombia	Latvia	Switzerland
Czech Republic	Lithuania	Ukraine
Denmark	Malta	United Kingdom
Estonia	Mexico	USA
France	New Zealand	
Finland	Norway	
Germany	Poland	

## Colophon

### **editorial**

Studio Brink & Campman

### **collection design**

Studio Brink & Campman

### **maintenance**

Please contact our partner James: [james.eu](mailto:james.eu)

### **photography**

Alexander van Berge

Peggy Janssen

Studio Floor Knaapen

Studio Sterkenburg

### **styling**

Studio Brink & Campman

### **graphic design**

Studio Brink & Campman

### **print**

Drukkerij Roelofs

We take reservations for printing errors,  
colour differences, or changes in the collections.

All rights are reserved.

© 2025 Brink & Campman



BY APPOINTMENT TO THE COURT OF THE NETHERLANDS

**SMETA**







**B&C**

Albert Schweitzerstraat 3  
7131 PG Lichtenvoorde | the Netherlands  
tel +31 (0)544 390 400  
brinkandcampman.com  
info@brinkandcampman.com

