



ORCHARD

Ecofloor

Polyester Carpet Tile

Commercial | Hospitality | Residential



Goodrich Global
SINCE 1983



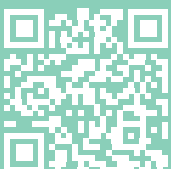
VERY GOOD



Orchard: Cultivated Calm

In **Ecofloor Orchard**, the heathered, woven, textile-like construction draws inspiration from natural fibers and weathered ground, reflecting the quiet beauty of cultivated landscapes where nature is thoughtfully guided. Fresh green hues echo new growth, leaves, and fruit-bearing trees, while soft greys and mineral tones reference stone, bark, and shaded earth. Heathered neutrals balance vitality with calm, creating a palette that is both versatile and timeless. Together, these colors support biophilic design principles, bringing the essence of nature indoors in a subtle and sophisticated way.

Orchard creates spaces that feel grounded and calm, yet alive with texture—ideal for modern interiors seeking warmth, comfort, and visual quiet.



Scan for E-Catalogue

Orchard

Technical Specifications

Collection Name	Orchard
Yarn	PolyLux Synthetic Fibre
Construction	Multi Level Loop
Dye Method	Solution Dyed
Gauge	1/12 inch
Stitches Per Inch	12 per inch
Pile Height	4 mm (+/-0.5 mm)
Total Height	6.5 mm (+/-0.5 mm)
Pile Weight	20 oz/sy (678 gm/sm)
Total Weight	97 oz/sy (3300 gm/sm +/- 200 gm/sm)
Primary Backing	Non-woven
Secondary Backing	Polyolefin Bac
Packing	20 pcs(5 sm/box)

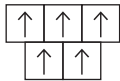
Performance Specifications

Colorfastness	Grade 5 - No Change (AATCC 16)
Flammability	Class I (ASTM E648)
Smoke Density	Passed (ASTM E662)
Static Propensity	≤3.5 kV (AATCC-134)
SGBC	Very Good ✓✓

Installation Method



Monolithic



Brick



Quarter Turn

Performance Comparison

Feature	Nylon 6	PolyLux	Polypropylene
Heat Resistance	★★	★★	★
Flame Resistance	★★	★★	★
Stain Resistance	★ (exception for stain resistance treated nylon)	★★★★	★★
Hydrophobic Property (Low moisture absorption speeds drying and reduces mold risk)	★★	★★★★	★★★★
Resiliency	★★★★	★★	★

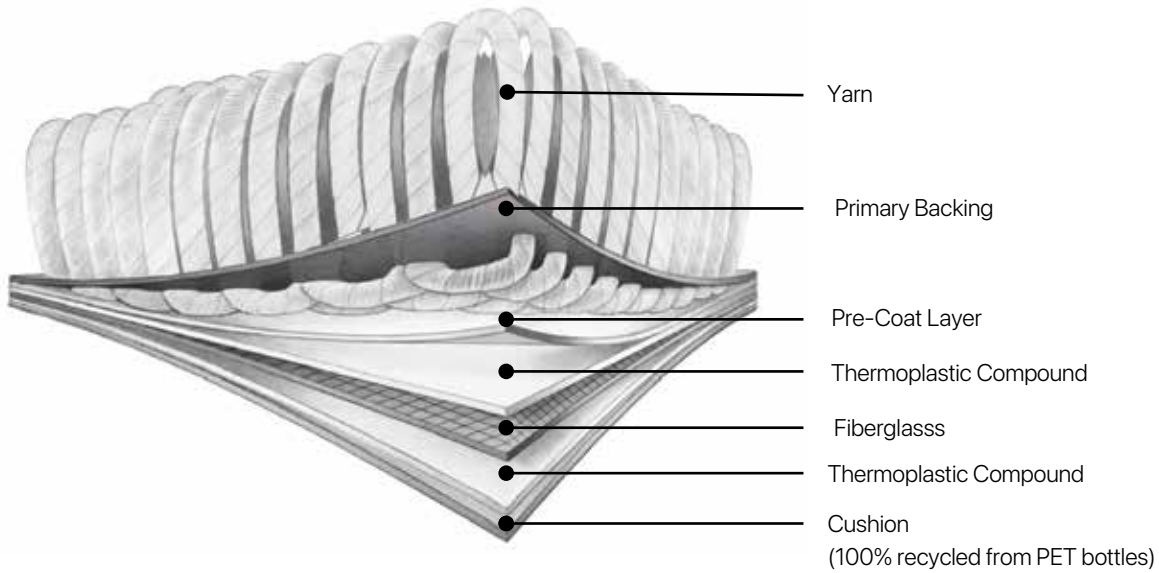


Polyolefin Bac

Carpet Tile Backing

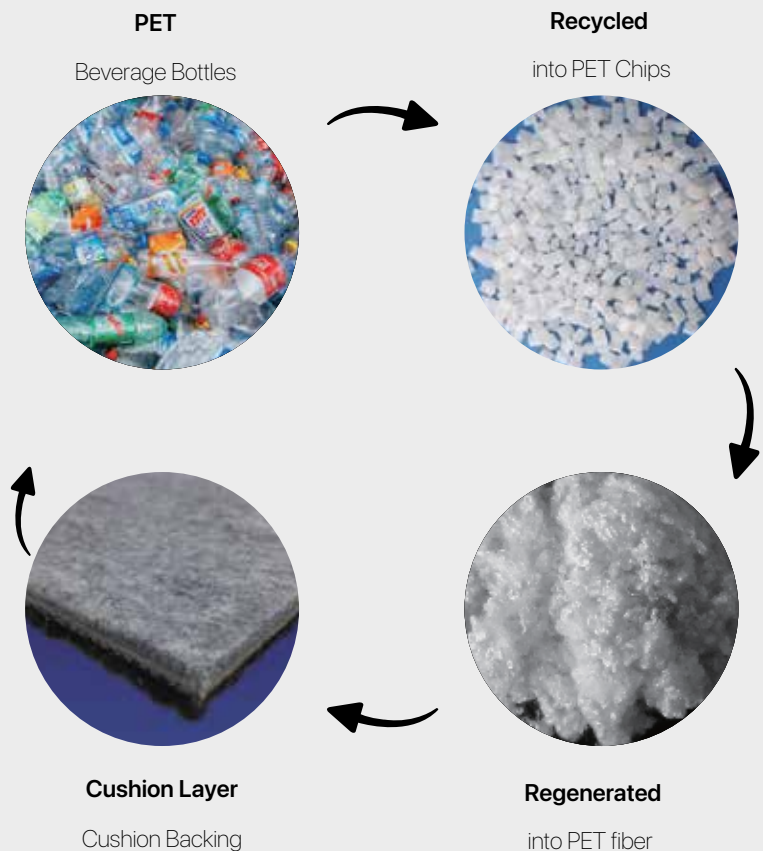


Polyolefin Bac takes your spaces to a higher standard of sustainability to support greater wellness for people and planet. The Polyolefin Bac Pro carpet tile contains recycled content, helping to eliminate the plastic waste stream. It offers superior performance and sustainability to the carpets.



Advantages

- **Comfortable Underfoot**
Cushion backing tile helps reduce fatigue
- **Noise Reduction**
Absorbs sound for better acoustics
- **Dimensional Stability**
Maintains shape and appearance
- **Hydrophobic Cushion Backing**
Repels moisture, prevents damage
- **Eco-friendly Materials**
No plasticizers, PVC, or bitumen
- **Sustainable Backing**
Made from 100% recycled PET bottles
- **Green Building Support**
Contributes to LEED®, WELL & more
- **Certified Performance**
CRI Green Label Plus & low carbon
- **Lightweight & Efficient**
Easier shipping, lower freight cost.



Note:

- Product specifications are based on standard manufacturing tolerances. Slight variations may occur but will not impact performance.
- As with all quality carpets, minor color differences may appear between dye lots.
- To maintain appearance and minimize wear, the use of protective chair pads is recommended under office chairs with castor wheels.

Stocking

Size 50 x 50 cm



ORC01 Oat



ORC03 Mushroom



ORC02 Walnut



ORC04 Oyster

Stocking

Size 50 x 50 cm



ORC05 Shark



ORC05 Shark (100%) | Brick Installation



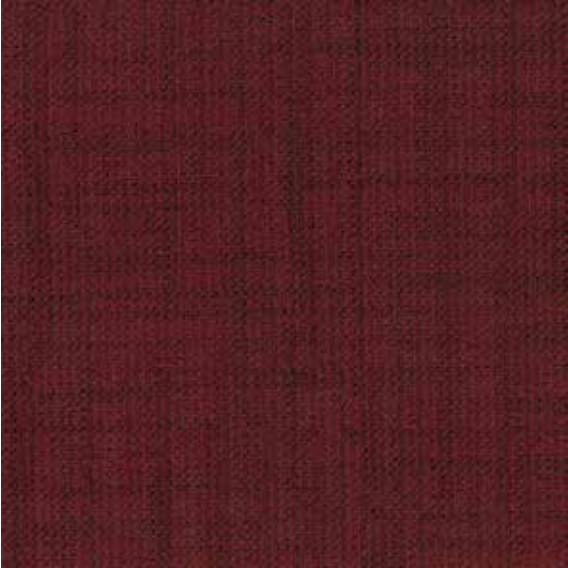
ORC06 Denim (100%) | Ashlar Installation



ORC06 Denim

Stocking

Size 50 x 50 cm



ORC07 Cherry



ORC12 Teal



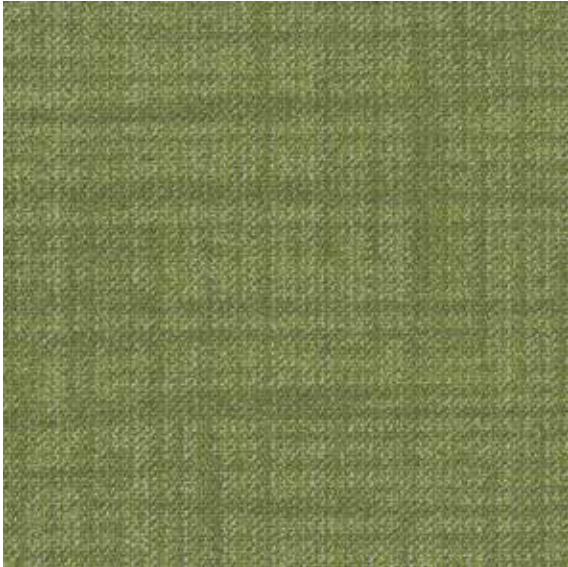
ORC09 Apricot



ORC13 Aquamarine



ORC10 Mango



ORC14 Avocado





ORC10 Mango (100%) | Brick Installation

* Images and renderings in this sample book are for illustration purpose and may not represent the real colour.



ORC03 Mushroom (70%) + ORC09 Apricot (30%) | Monolithic Installation

* Images and renderings in this sample book are for illustration purpose and may not represent the real colour.



ORC03 Mushroom (50%) + ORC04 Oyster (50%) | Monolithic Installation

* Images and renderings in this sample book are for illustration purpose and may not represent the real colour.



ORC07 Cherry (100%) | Brick Installation

* Images and renderings in this sample book are for illustration purpose and may not represent the real colour.



ORC09 Apricot (100%) | Monolithic Installation

* Images and renderings in this sample book are for illustration purpose and may not represent the real colour.



ORC02 Walnut (100%) | Brick Installation

* Images and renderings in this sample book are for illustration purpose and may not represent the real colour.



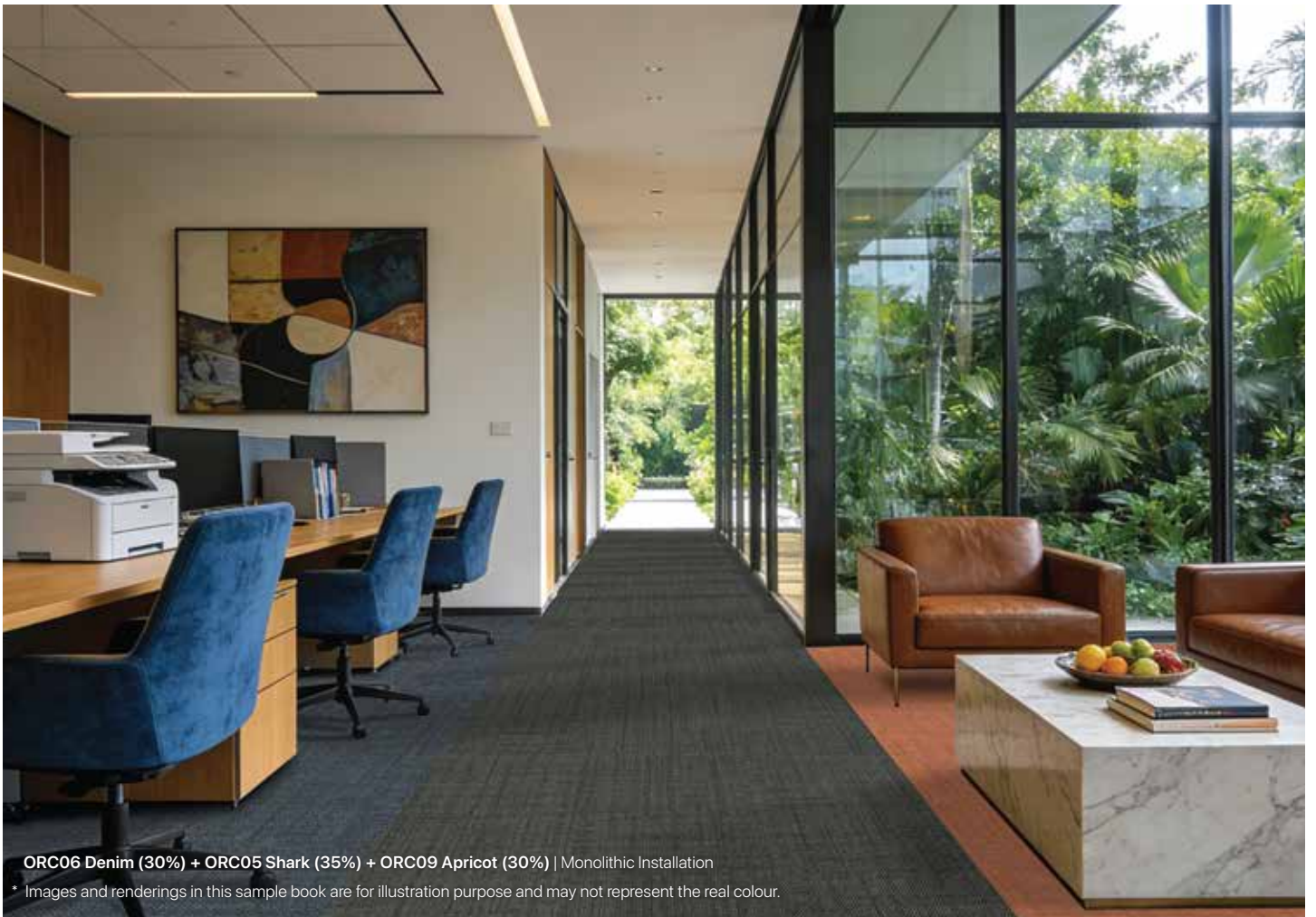
ORC12 Teal (100%) | Brick Installation

* Images and renderings in this sample book are for illustration purpose and may not represent the real colour.



ORC13 Aquamarine (100%) | Brick Installation

* Images and renderings in this sample book are for illustration purpose and may not represent the real colour.



ORC06 Denim (30%) + ORC05 Shark (35%) + ORC09 Apricot (30%) | Monolithic Installation

* Images and renderings in this sample book are for illustration purpose and may not represent the real colour.



ORC02 Walnut (50%) + ORC05 Shark (50%) | Monolithic Installation

* Images and renderings in this sample book are for illustration purpose and may not represent the real colour.



ORC14 Avocado (100%) | Brick Installation

* Images and renderings in this sample book are for illustration purpose and may not represent the real colour.



ORC04 Oyster (50%) + ORC12 Teal (50%) | Monolithic Installation

* Images and renderings in this sample book are for illustration purpose and may not represent the real colour.

Copyright© 01/2026 Goodrich Global. All rights reserved.

Stay Connected - www.goodrichglobal.com | info@goodrichglobal.com

Singapore (HQ) | Malaysia | Thailand | Vietnam | India | Indonesia | United Arab Emirates | Philippines | China | Hongkong (China)

