



SERENITY

Premierfloor



Nylon Carpet Tile

Commercial | Hospitality | Residential



Goodrich Global
SINCE 1983



LEADER



Serenity – Where Carpet Tile Design Meets Tranquility

Inspired by the quiet balance of modern interiors, **Serenity** is a versatile carpet tile collection designed for commercial spaces, corporate offices, retail, and hospitality environments. It brings together architecture, nature, and calm to transform flooring into both a functional and aesthetic feature.

The design draws from nature thus echoing the softness of clouds, the fluidity of water, and the texture of weathered stone. These subtle, organic patterns create a sense of calm focus while maintaining a clean, contemporary look suitable for high-traffic commercial environments.

A palette of soft blues, greys, greens and muted neutrals adds depth through gentle tonal variation, offering a refined and versatile foundation that complements a wide range of interior concepts.

More than just flooring, **Serenity** carpet tiles provide durability, ease of maintenance, and installation flexibility thus making them a practical solution for office, retail, and hospitality flooring applications.

Serenity transforms interiors into spaces that feel calm, welcoming, and productive. Without a doubt, this collection will be a where design meets tranquility.



Serenity

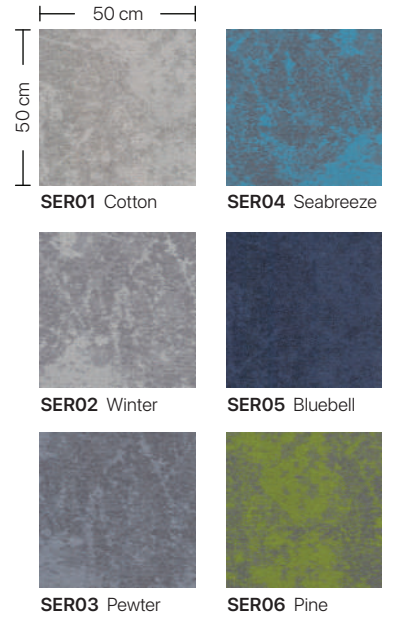
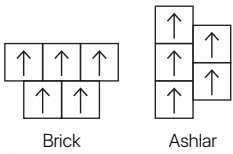
Technical Specifications

Collection Name	Serenity
Yarn	100% Nylon 6
Construction	Tufted Multi Level Loop
Dye Method	Solution Dyed
Gauge	1/12 inch
Stitches Per Inch	13 per inch
Pile Height	4.0mm (+/-0.5mm)
Total Height	6.0 mm (+/-0.5 mm)
Pile Weight	16 oz/sy (544 gm/sm)
Total Weight	89 oz/sy (3020 gm/sm +/-200 gm/sm)
Primary Backing	Non-woven
Secondary Backing	PVC Free Backing - Polyolefin Bac
Packing	20 pcs (5sm/box)
Anti-Microbial	Ultra-Fresh (available as option)

Performance Specifications

Colorfastness	Grade 5 - No Change (AATCC 16)
Flammability	Class I (ASTM E648)
Smoke Density	Passed (ASTM E662)
Static Propensity	≤3.5 kV (AATCC-134)
SGBC	Leader ✓✓✓✓
Warranty	Limited Lifetime

Installation Method



SER01 Cotton (100%) | Ashlar Installation

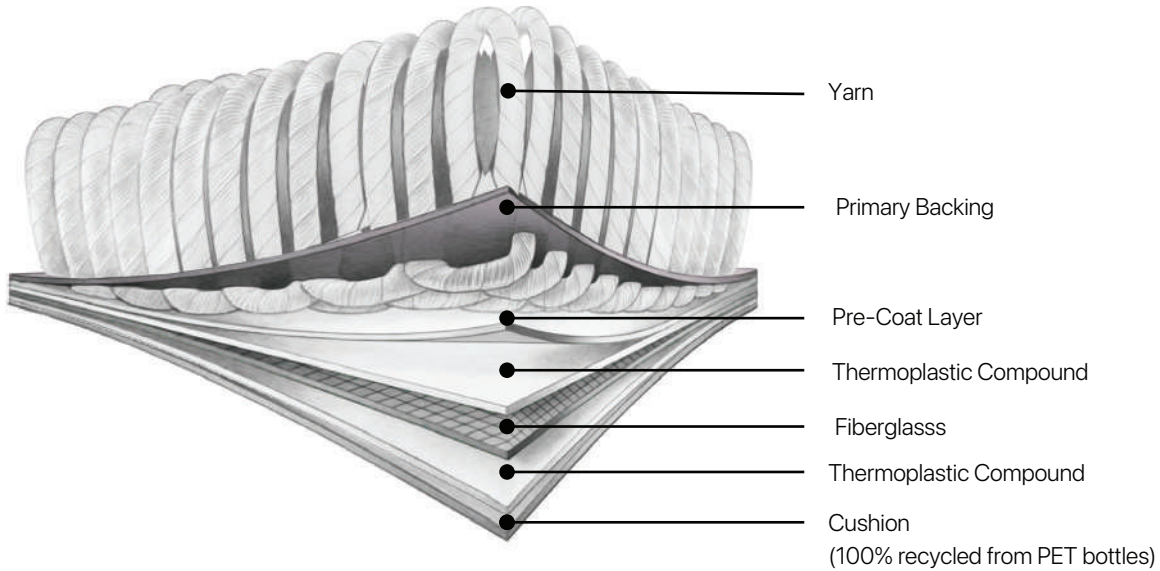


Polyolefin Bac

Carpet Tile Backing

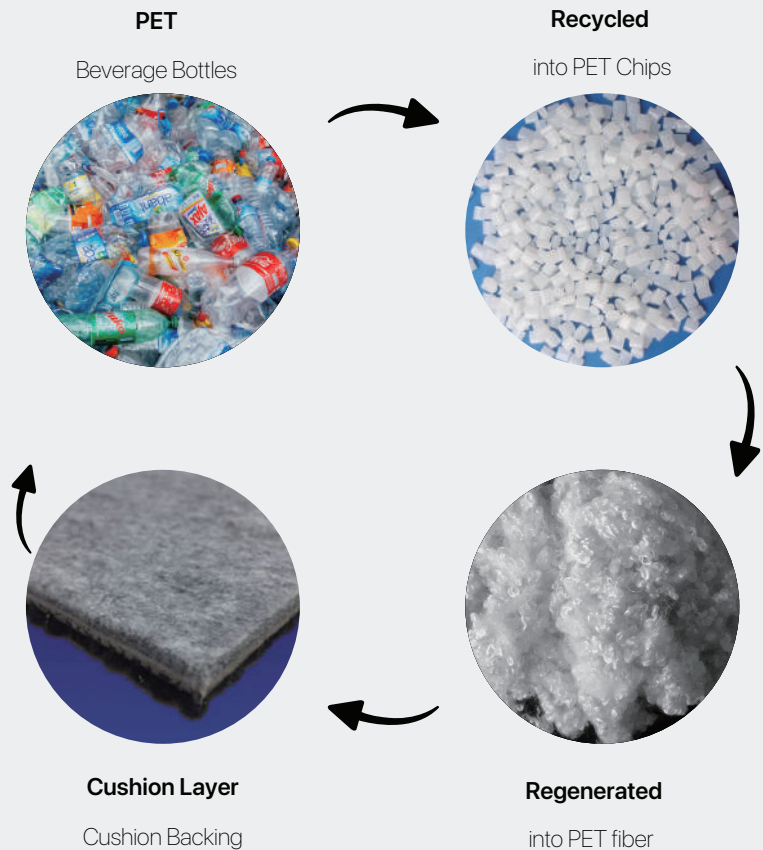


Polyolefin Bac takes your spaces to a higher standard of sustainability to support greater wellness for people and planet. The Polyolefin Bac carpet tile contains recycled content, helping to eliminate the plastic waste stream. It offers superior performance and sustainability to the carpets.



Advantages

- **Comfortable Underfoot**
Cushion backing tile helps reduce fatigue
- **Noise Reduction**
Absorbs sound for better acoustics
- **Dimensional Stability**
Maintains shape and appearance
- **Hydrophobic Cushion Backing**
Repels moisture, prevents damage
- **Eco-friendly Materials**
No plasticizers, PVC, or bitumen
- **Sustainable Backing**
Made from 100% recycled PET bottles
- **Green Building Support**
Contributes to LEED®, WELL & more
- **Certified Performance**
CRI Green Label Plus & low carbon
- **Lightweight & Efficient**
Easier shipping, lower freight cost.



Note:

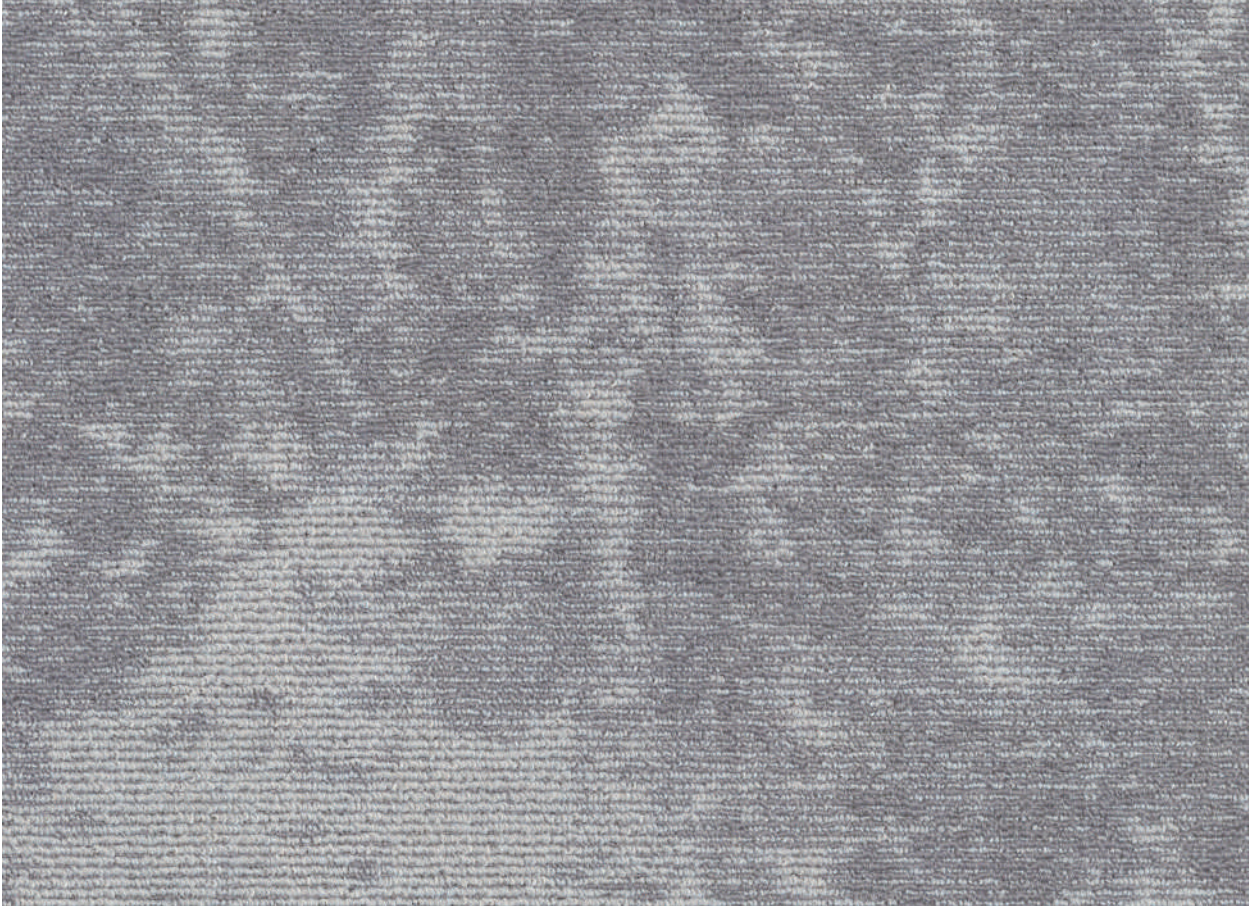
- Product specifications are based on standard manufacturing tolerances. Slight variations may occur but will not impact performance.
- As with all quality carpets, minor color differences may appear between dye lots.
- To maintain appearance and minimize wear, the use of protective chair pads is recommended under office chairs with castor wheels.

Stocking

Size 50 X 50 cm



SER01 Cotton



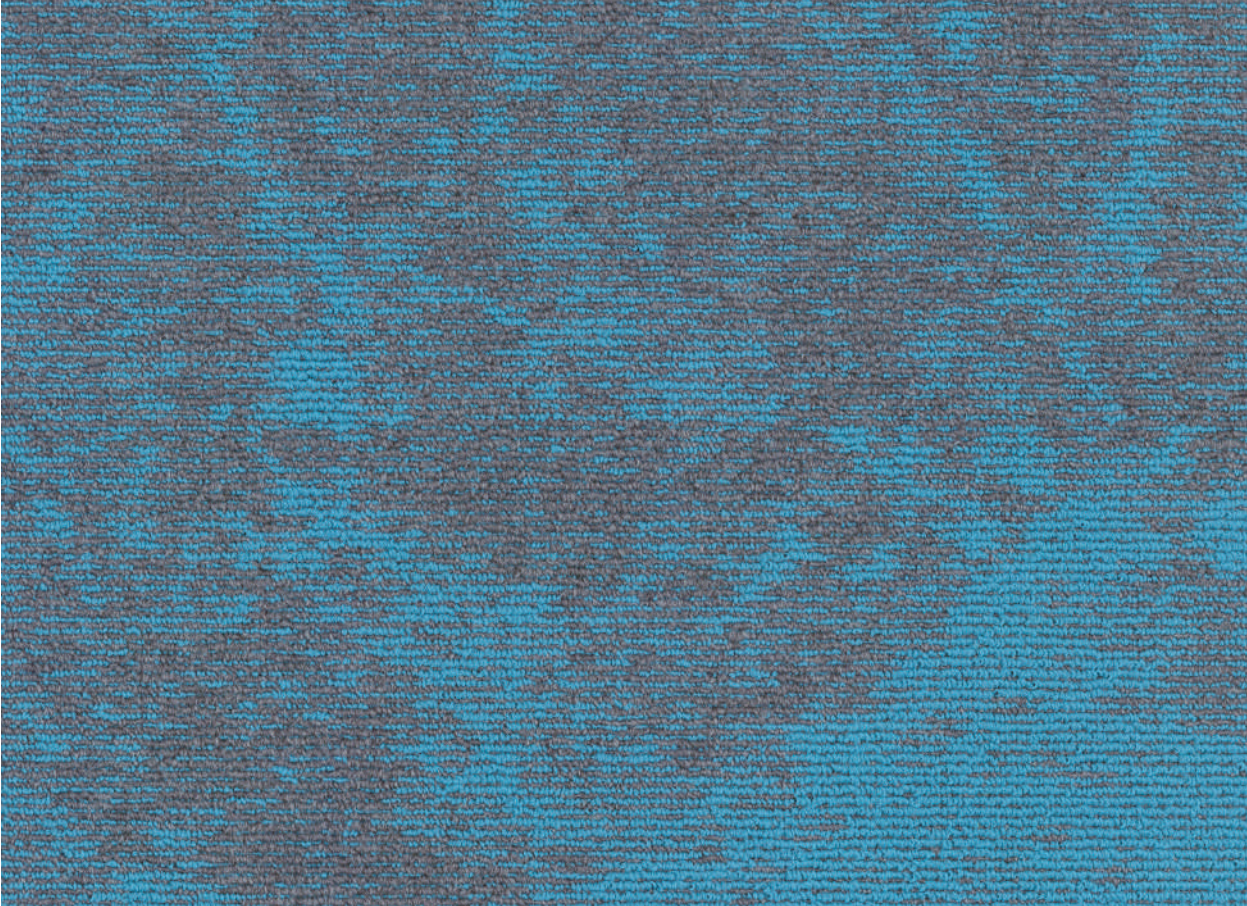
SER02 Winter

Stocking

Size 50 X 50 cm



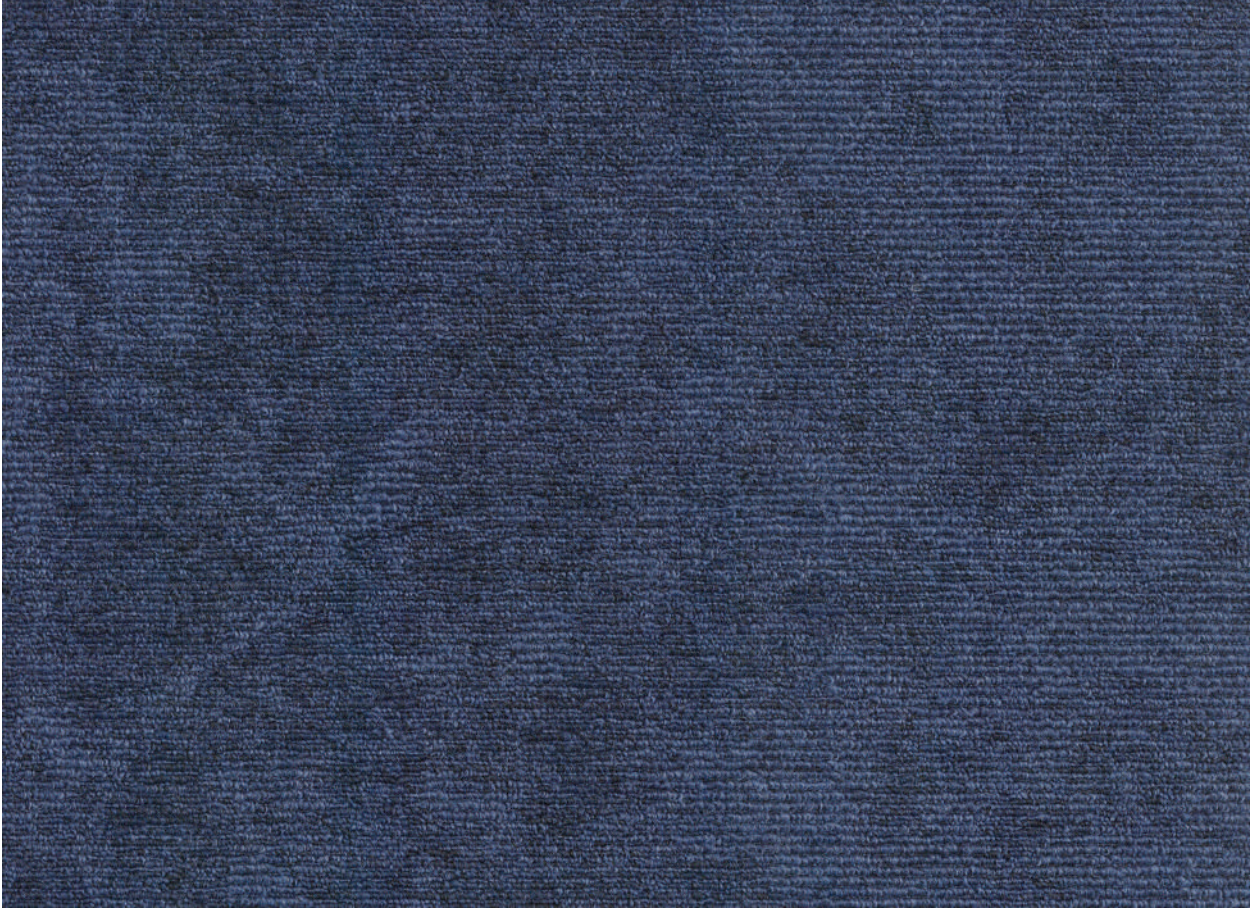
SER03 Pewter



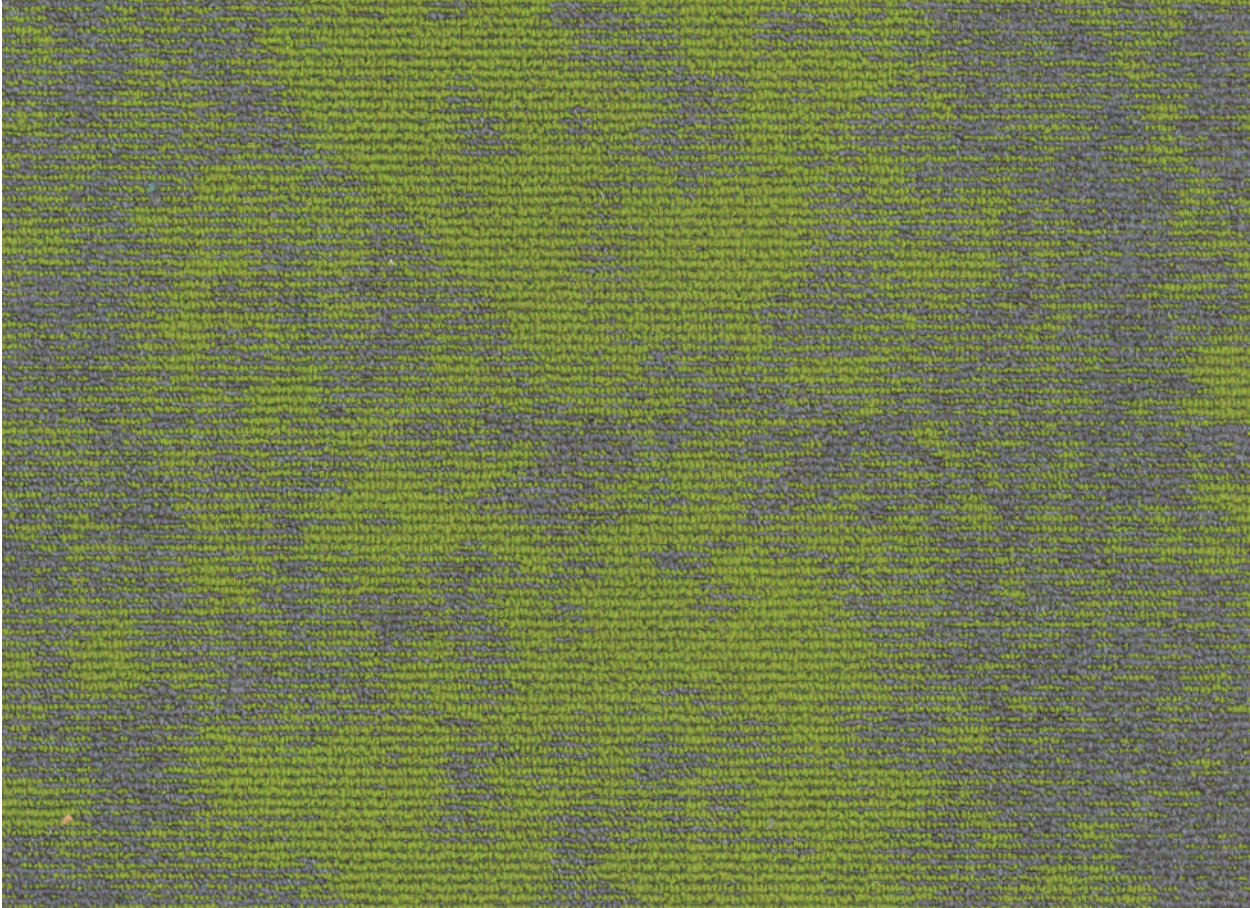
SER04 Seabreeze

Stocking

Size 50 X 50 cm



SER05 Bluebell



SER06 Pine



SER04 Seabreeze (100%) | Brick Installation

* Images and renderings in this sample book are for illustration purpose and may not represent the real colour.



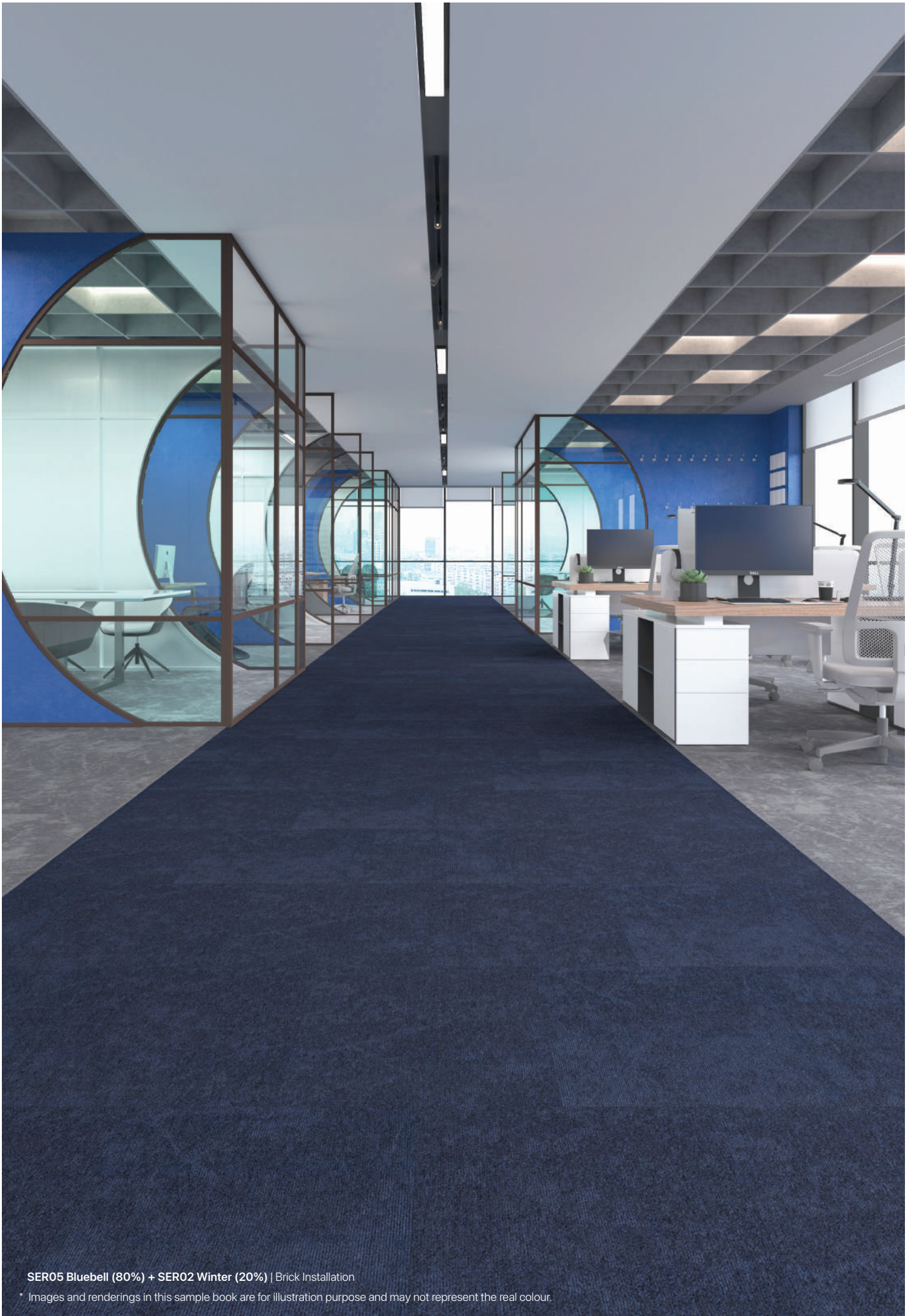
SER02 Winter (100%) | Ashlar Installation

* Images and renderings in this sample book are for illustration purpose and may not represent the real colour.



SER6 Pine (70%) + SER01 Cotton (30%) | Ashlar Installation

* Images and renderings in this sample book are for illustration purpose and may not represent the real colour.



SER05 Bluebell (80%) + SER02 Winter (20%) | Brick Installation

* Images and renderings in this sample book are for illustration purpose and may not represent the real colour.



SER01 Cotton (30%) + SER02 Winter (40%) + SER04 Seabreeze (30%) | Random Ashlar Installation

* Images and renderings in this sample book are for illustration purpose and may not represent the real colour.



SER01 Cotton (50%) + SER03 Pewter (50%) | Brick Installation

* Images and renderings in this sample book are for illustration purpose and may not represent the real colour.

Copyright© 04/2026 Goodrich Global. All rights reserved.

Stay Connected - www.goodrichglobal.com | info@goodrichglobal.com

Singapore (HQ) | Malaysia | Thailand | Vietnam | India | Indonesia | United Arab Emirates | Philippines | China | Hongkong (China)



Goodrich Global
SINCE 1983