



Goodrich Global  
SINCE 1983

PREMIERWALL  
**STUDIO**

2026-2029

Wallcovering  
Fabric Backed  
Vinyl Type II



# PREMIERWALL STUDIO

52''-55'' Fabric- Backed Contract Wallcovering

## PHYSICAL PROPERTIES

Weight 20 / 29 oz. PLY  
Roll Size 52 – 55'' x 30 yards  
Backing Woven/ Non Woven

Meets or exceeds Federal Specification CCC-W-408D for Type II Wallcovering

## FIRE SAFETY

- Class "A" fire rated – tested in accordance with ASTM E-84 Tunnel Test
- Flame spread : 25/ Smoke developed : 45
- Passes NFPA 286 Corner Burn Test

## ENVIRONMENT & HEALTH

- The product has been assessed according to the assessment criteria of the Singapore Green Building product certification scheme.
- Meets California section 01350 IAQ test requirements for wallcovering.
- Can contribute to LEED EQ4.1 point for low-emitting materials, adhesives, and sealants, if used with low VOC adhesives.
- Can contribute to LEED MR5.1 point for regional materials.



## ANTI-MICROBIAL FEATURES

**PREMIERWALL STUDIO** contain mildew and staph resistance additives in the vinyl and plastisol. This provides the wallcovering with resistance to the growth of mildew and bacteria, including mold, fungi, pink stain and black fungal stain.

## BATCHING

Since slight variation in shading may occur time to time, it is important that the roll carrying the same batch number be used in any one area.

## ORIGIN

USA



# AXIS II

## SPECIFICATIONS & PROPERTIES

### WEIGHT

20 oz. PLY / 618G/PLM 13.3oz.

### WIDTH

52-54"(132-137cm)

### BACKING

Non Woven

### PATTERN MATCH

Reverse Random

### HORIZONTAL REPEAT

N.A.

### VERTICAL REPEAT

N.A.

Custom colors, weights, widths and microventing are available.





PWS2001



PWS2002



PWS2003



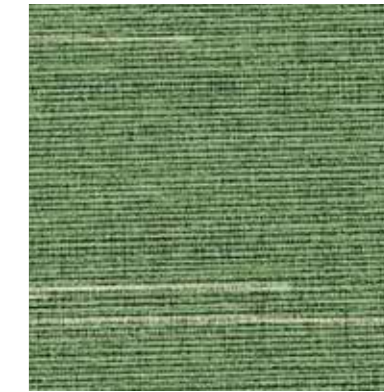
PWS2004



PWS2014



PWS2015



PWS2016



PWS2005



PWS2006



PWS2007



PWS2008



PWS2017



PWS2018



PWS2009



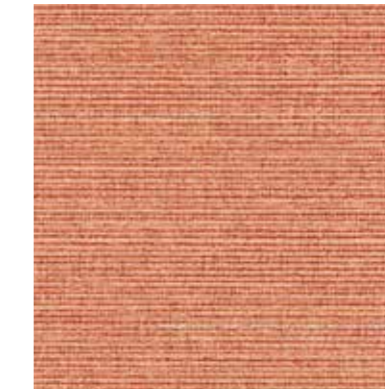
PWS2010



PWS2013



PWS2019



PWS2020



PWS2021



PWS2011



PWS2012

# GALERIE II

## SPECIFICATIONS & PROPERTIES

**WEIGHT**  
20oz. PLY / 618G/PLM 13.3oz.

**WIDTH**  
52-54"(132-137cm)

**BACKING**  
Woven

**PATTERN MATCH**  
Reverse Random

**HORIZONTAL REPEAT**  
N.A.

**VERTICAL REPEAT**  
N.A.

Custom colors, weights, widths and microventing are available.



**PWS2101**



**PWS2102**



**PWS2103**



**PWS2104**



**PWS2106**



**PWS2107**



**PWS2108**



**PWS2109**



**PWS2105**



**PWS2110**



**PWS2111**



**PWS2112**



**PWS2115**



**PWS2113**



**PWS2114**



**PWS2116**



**PWS2117**



**PWS2118**



**PWS2119**



**PWS2120**

# HAPPENSTANCE

## SPECIFICATIONS & PROPERTIES

### WEIGHT

20oz. PLY / 618G/PLM 13.3oz.

### WIDTH

52-54"(132-137cm)

### BACKING

Woven

### PATTERN MATCH

Straight Random

### HORIZONTAL REPEAT

N.A.

### VERTICAL REPEAT

N.A.

Custom colors, weights, widths and microventing are available.





**PWS2201**



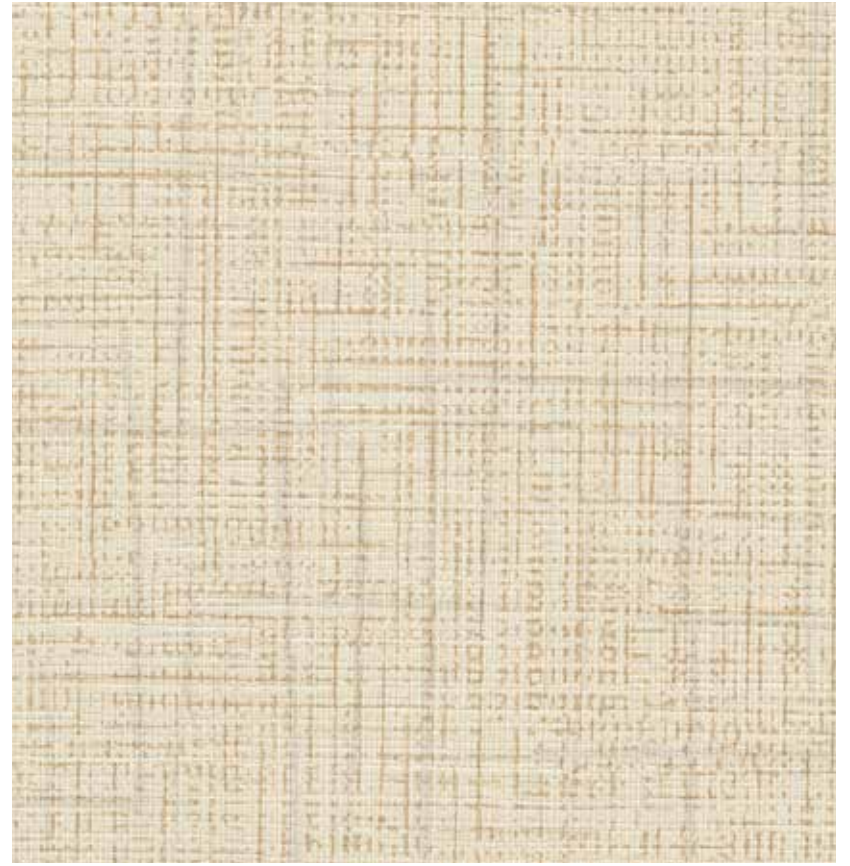
**PWS2202**



**PWS2203**



**PWS2204**



**PWS2205**



**PWS2206**



**PWS2207**



**PWS2208**

# HAVEN AVE

## SPECIFICATIONS & PROPERTIES

### WEIGHT

20oz. PLY / 618G/PLM 13.3oz.

### WIDTH

52-54"(132-137cm)

### BACKING

Woven

### PATTERN MATCH

Reverse Random

### HORIZONTAL REPEAT

N.A.

### VERTICAL REPEAT

N.A.

Custom colors, weights, widths and microventing are available.





**PWS2301**



**PWS2302**



**PWS2303**



**PWS2304**



**PWS2305**



**PWS2306**



**PWS2307**



**PWS2308**



**PWS2309**



**PWS2310**



**PWS2311**



**PWS2312**



**PWS2313**



**PWS2314**



**PWS2315**

# LINSEY

## SPECIFICATIONS & PROPERTIES

### WEIGHT

20oz. PLY / 618G/PLM 13.3oz.

### WIDTH

52-54"(132-137cm)

### BACKING

Non Woven

### PATTERN MATCH

Reverse Random

### HORIZONTAL REPEAT

N.A.

### VERTICAL REPEAT

N.A.

Custom colors, weights, widths and microventing are available.





**PWS2401**



**PWS2402**



**PWS2405**



**PWS2403**



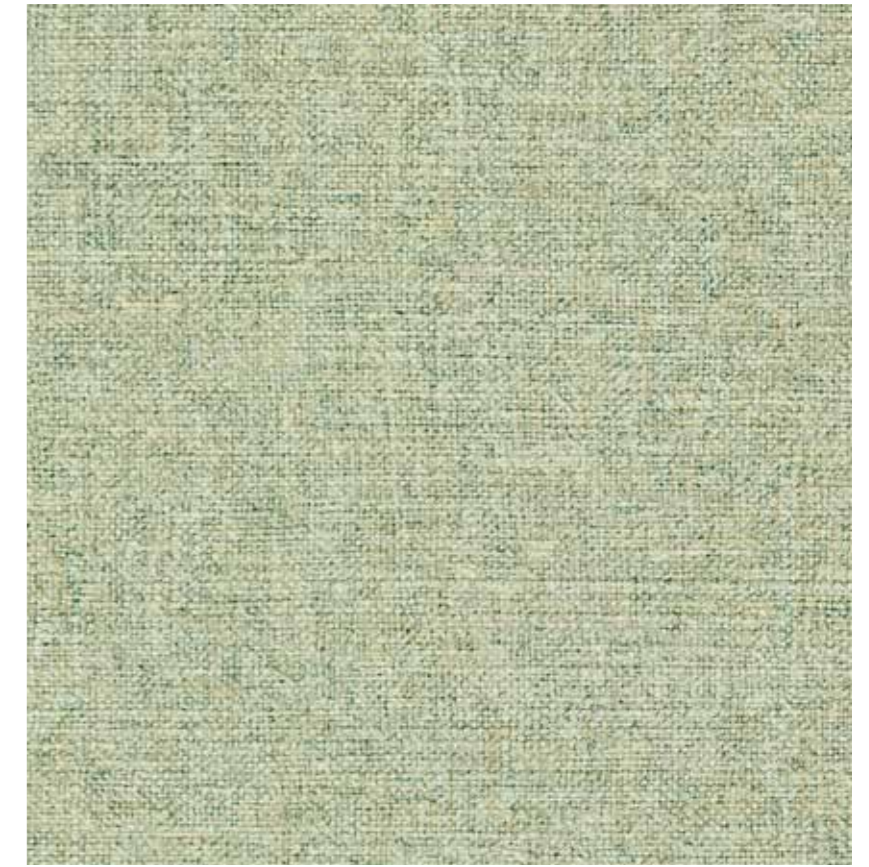
**PWS2404**



**PWS2414**



**PWS2415**



**PWS2418**



**PWS2416**



**PWS2417**



**PWS2406**



**PWS2407**



**PWS2408**



**PWS2409**



**PWS2419**



**PWS2420**



**PWS2421**



**PWS2422**



**PWS2410**



**PWS2411**



**PWS2412**



**PWS2413**



**PWS2423**



**PWS2424**

# SIMPLY SHEER

## SPECIFICATIONS & PROPERTIES

**WEIGHT**  
20oz. PLY / 620G/PLM 13.3oz.

**WIDTH**  
54"(137cm)

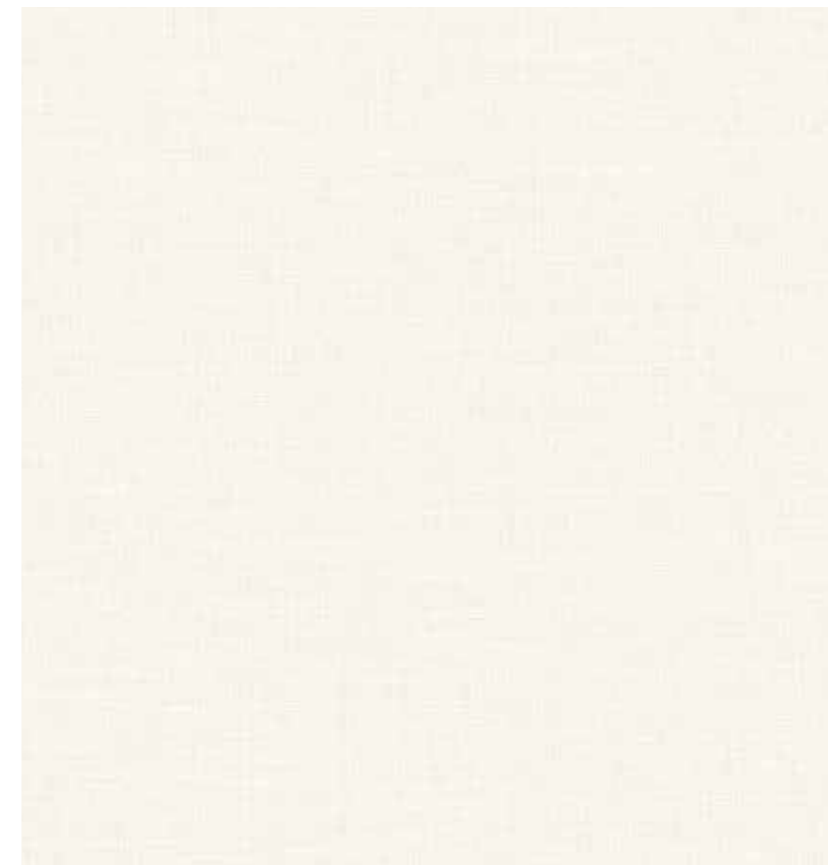
**BACKING**  
Woven

**PATTERN MATCH**  
Reverse Random

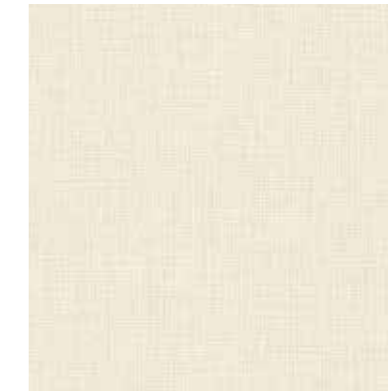
**HORIZONTAL REPEAT**  
N.A.

**VERTICAL REPEAT**  
N.A.

Custom colors, weights, widths and microventing are available.



PWS2501



PWS2502



PWS2503



PWS2504



PWS2505



PWS2506



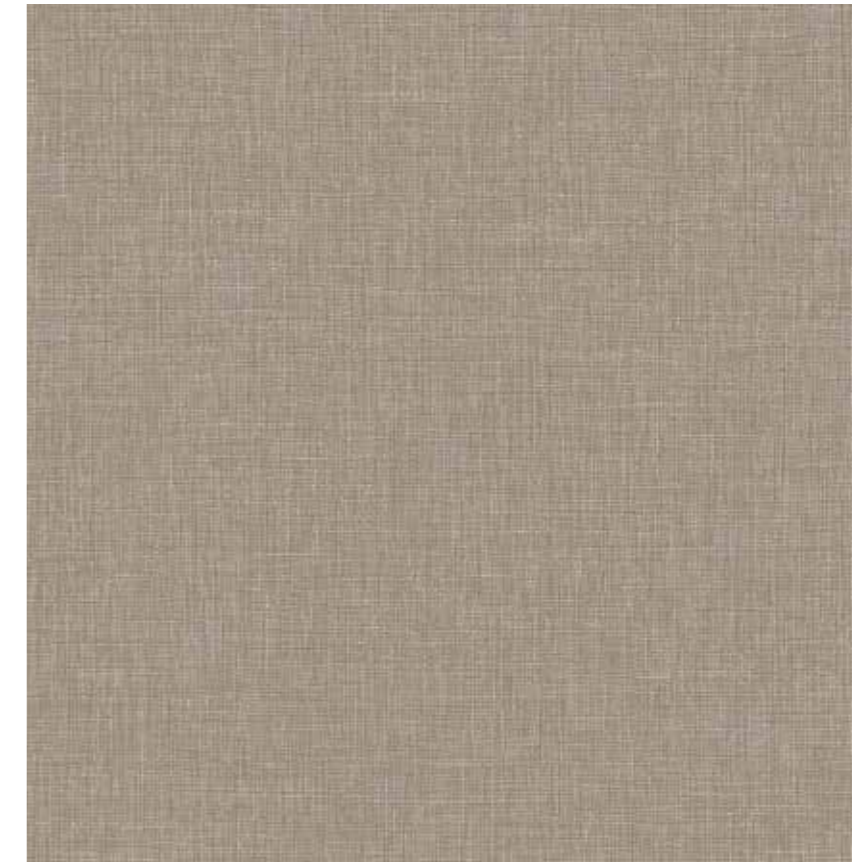
PWS2507



PWS2508



PWS2509



PWS2510



**PWS2511**



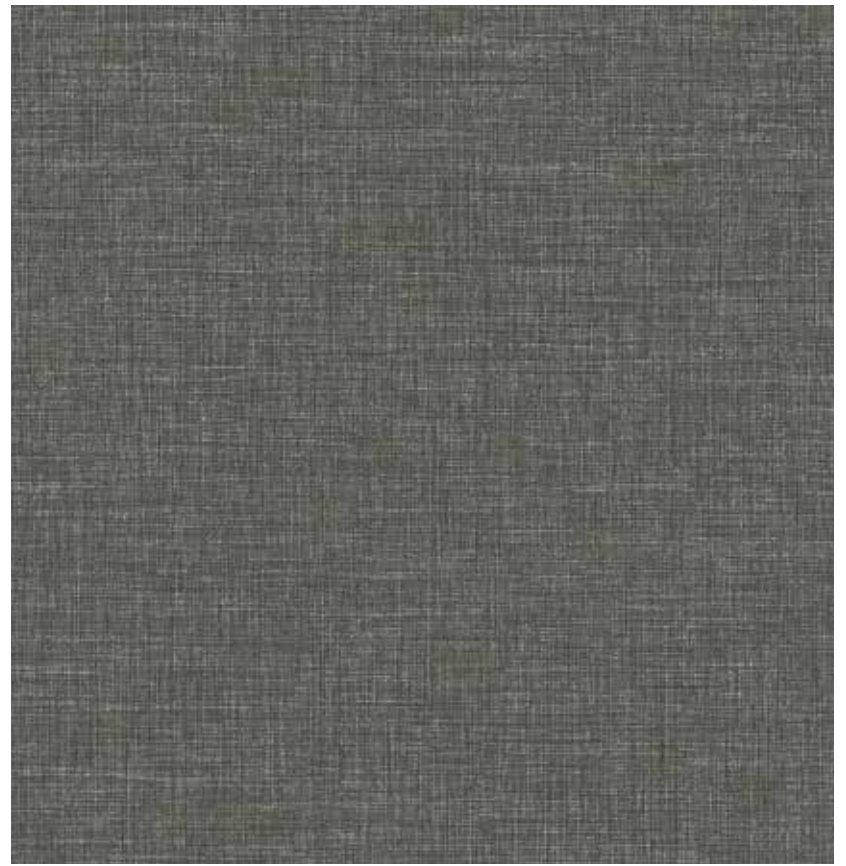
**PWS2512**



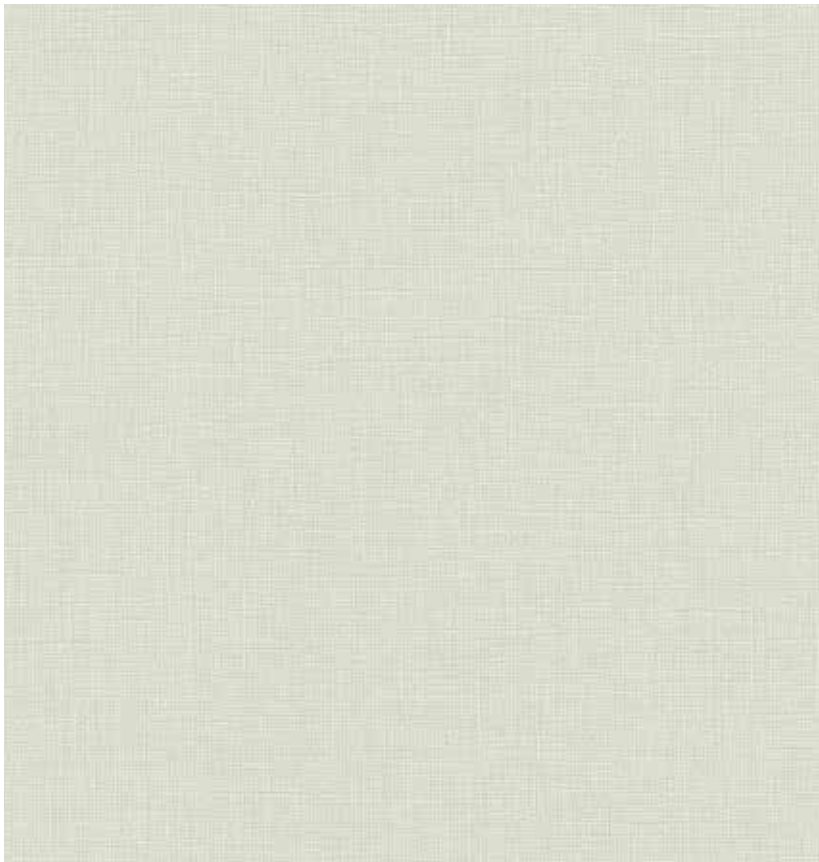
**PWS2513**



**PWS2514**



**PWS2515**



**PWS2516**



**PWS2517**



**PWS2518**

# SERICIN

## SPECIFICATIONS & PROPERTIES

### WEIGHT

20oz. PLY / 618G/PLM 13.3oz.

### WIDTH

52-54"(132-137cm)

### BACKING

Woven

### PATTERN MATCH

Reverse Random

### HORIZONTAL REPEAT

N.A.

### VERTICAL REPEAT

N.A.

Custom colors, weights, widths and microventing are available.



**PWS2601**



**PWS2602**



**PWS2603**



**PWS2604**



**PWS2605**



**PWS2606**



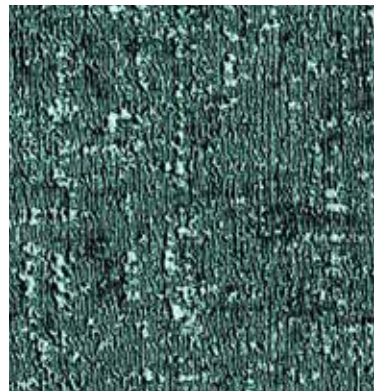
**PWS2607**



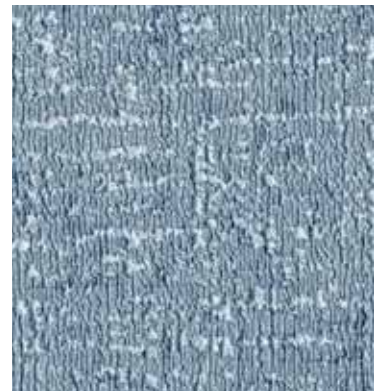
**PWS2608**



**PWS2609**



**PWS2610**



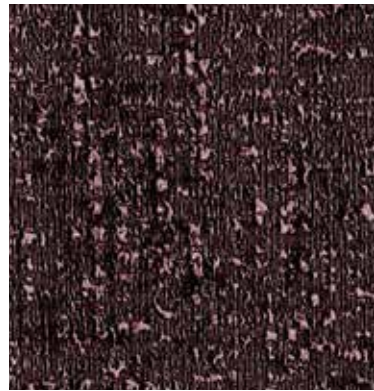
**PWS2611**



**PWS2612**



**PWS2613**



**PWS2614**



**PWS2615**



**PWS2616**

# SUNSET PARK

## SPECIFICATIONS & PROPERTIES

### WEIGHT

20oz. PLY / 618G/PLM 13.3oz.

### WIDTH

52-54"(132-137cm)

### BACKING

Woven

### PATTERN MATCH

Reverse Random

### HORIZONTAL REPEAT

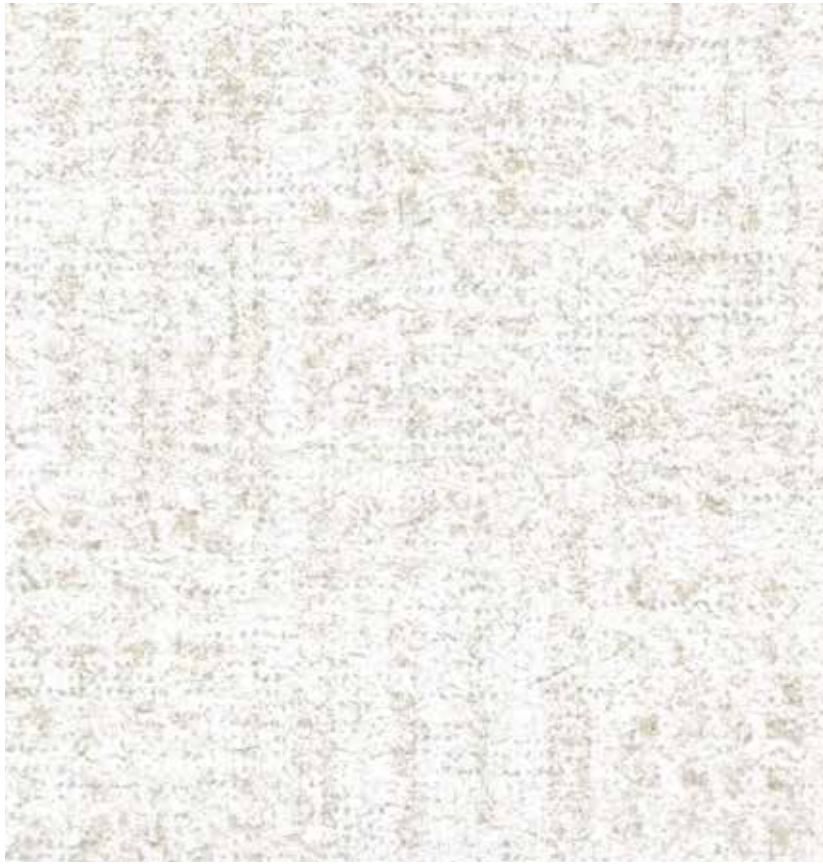
N.A.

### VERTICAL REPEAT

N.A.

Custom colors, weights, widths and microventing are available.





**PWS2701**



**PWS2702**



**PWS2703**



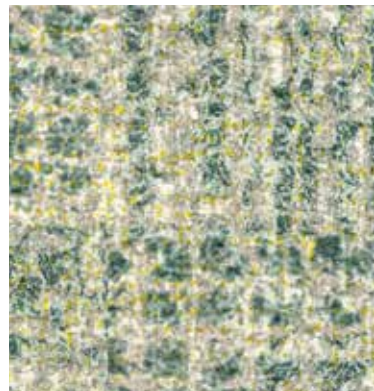
**PWS2704**



**PWS2705**



**PWS2706**



**PWS2707**



**PWS2708**



**PWS2709**



**PWS2710**



**PWS2711**



**PWS2712**

# ZEN GRAIN

## SPECIFICATIONS & PROPERTIES

**WEIGHT**  
20oz. PLY / 620G/PLM 13.3oz.

**WIDTH**  
54"(137cm)

**BACKING**  
Woven

**PATTERN MATCH**  
Reverse Random

**HORIZONTAL REPEAT**  
N.A.

**VERTICAL REPEAT**  
N.A.

Custom colors, weights, widths and microventing are available.





**PWS2801**



**PWS2802**



**PWS2803**



**PWS2804**



**PWS2805**



**PWS2806**



**PWS2807**



**PWS2808**



**PWS2809**



**PWS2810**



**PWS2811**



**PWS2812**



**PWS2813**



**PWS2814**



**PWS2815**



**PWS2816**

# PLASTERED WOVEN

## SPECIFICATIONS & PROPERTIES

### WEIGHT

24oz. PLY / 743G/PLM 16oz.

### WIDTH

52-54"(132-137cm)

### BACKING

Woven

### PATTERN MATCH

Reverse Random

### HORIZONTAL REPEAT

N.A.

### VERTICAL REPEAT

N.A.

Custom colors, weights, widths and microventing are available.





**PWS2901**



**PWS2902**



**PWS2905**



**PWS2903**



**PWS2904**



**PWS2906**



**PWS2907**



**PWS2908**

# RATAN

## SPECIFICATIONS & PROPERTIES

### WEIGHT

20oz. PLY / 618G/PLM 13.3oz.

### WIDTH

52-54"(132-137cm)

### BACKING

Woven

### PATTERN MATCH

Reverse Random

### HORIZONTAL REPEAT

N.A.

### VERTICAL REPEAT

N.A.

Custom colors, weights, widths and microventing are available.



**PWS3001**



**PWS3002**



**PWS3003**



**PWS3004**



**PWS3005**



**PWS3006**



**PWS3007**



**PWS3008**

# ZAFT WEAVE

## SPECIFICATIONS & PROPERTIES

**WEIGHT**  
20oz. PLY / 618G/PLM 13.3oz.

**WIDTH**  
52-54"(132-137cm)

**BACKING**  
Woven

**PATTERN MATCH**  
Reverse Random

**HORIZONTAL REPEAT**  
N.A.

**VERTICAL REPEAT**  
N.A.

Custom colors, weights, widths and microventing are available.





**PWS3101**



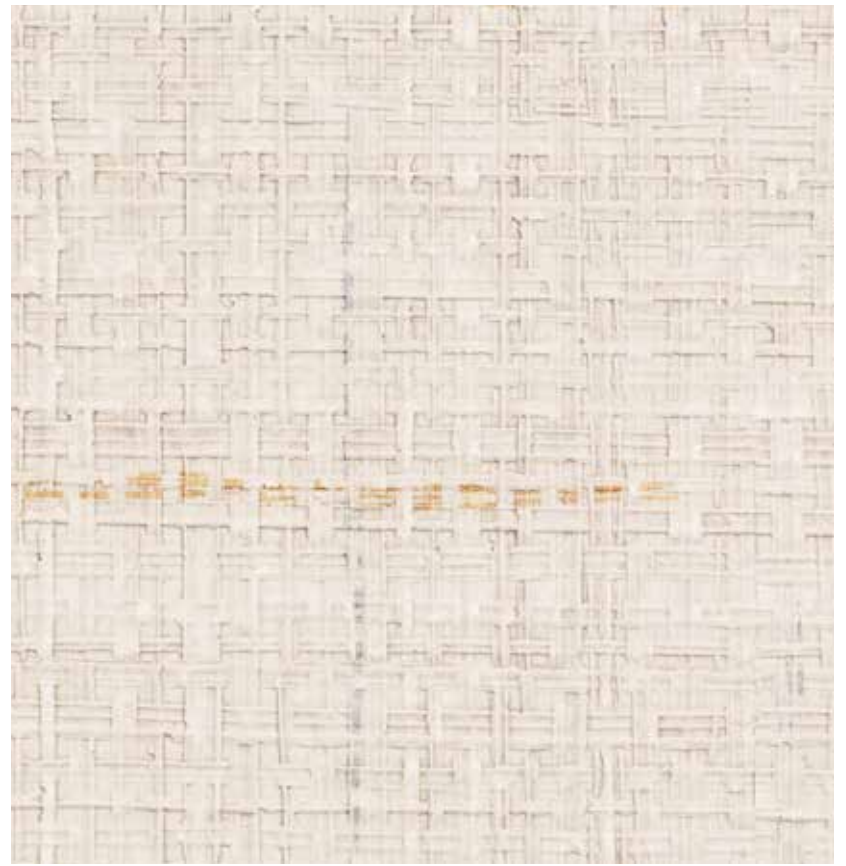
**PWS3102**



**PWS3103**



**PWS3104**



**PWS3105**



**PWS3106**



**PWS3107**



**PWS3108**

# aura

wellness spa

## FIJI WEAVE

### SPECIFICATIONS & PROPERTIES

#### WEIGHT

20oz. PLY / 620G/PLM 13.3oz.

#### WIDTH

54"(137cm)

#### BACKING

Woven

#### PATTERN MATCH

Reverse Random

#### HORIZONTAL REPEAT

N.A.

#### VERTICAL REPEAT

N.A.

Custom colors, weights, widths and microventing are available.



**PWS3201**



**PWS3202**



**PWS3203**



**PWS3204**



**PWS3205**



**PWS3206**



**PWS3207**



**PWS3208**



**PWS3209**



**PWS3210**



**PWS3211**



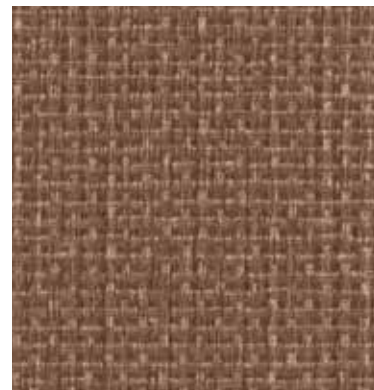
**PWS3212**



**PWS3213**



**PWS3214**



**PWS3215**



**PWS3216**

# HAMPTON GRASS

## SPECIFICATIONS & PROPERTIES

**WEIGHT**  
20oz. PLY / 620G/PLM 13.3oz.

**WIDTH**  
54"(137cm)

**BACKING**  
Woven

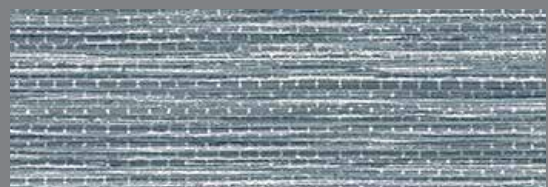
**PATTERN MATCH**  
Reverse Random

**HORIZONTAL REPEAT**  
54"

**VERTICAL REPEAT**  
18"

Custom colors, weights, widths and microventing are available.

54"



18"



WC →



**PWS3301**



**PWS3302**



**PWS3303**



**PWS3304**



**PWS3305**



**PWS3306**



**PWS3307**



**PWS3308**



**PWS3309**



**PWS3310**



**PWS3311**



**PWS3312**



**PWS3313**



**PWS3314**



**PWS3315**



**PWS3316**

# HULA

## SPECIFICATIONS & PROPERTIES

### WEIGHT

20oz. PLY / 620G/PLM 13.3oz.

### WIDTH

54"(137cm)

### BACKING

Woven

### PATTERN MATCH

Straight Random

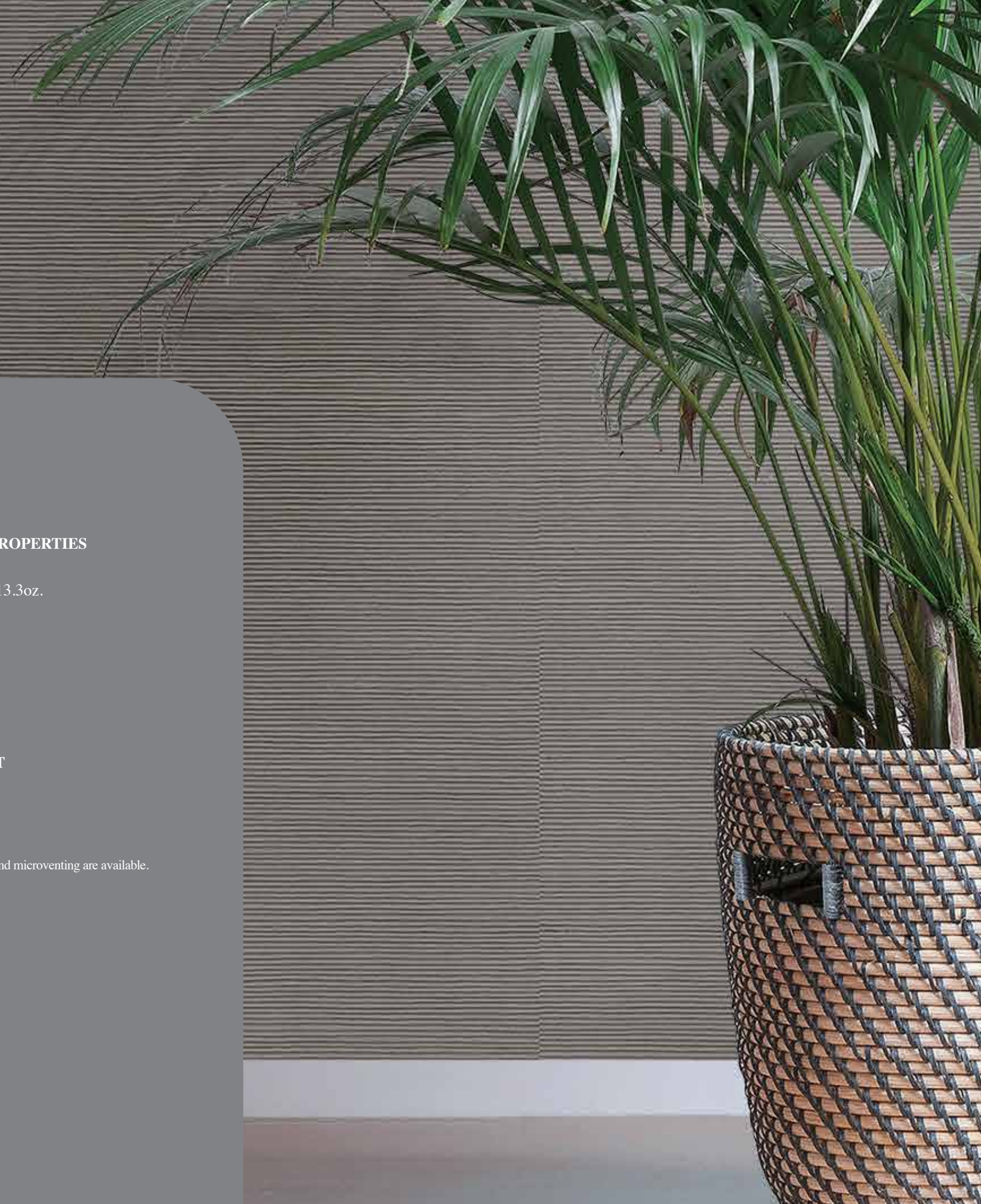
### HORIZONTAL REPEAT

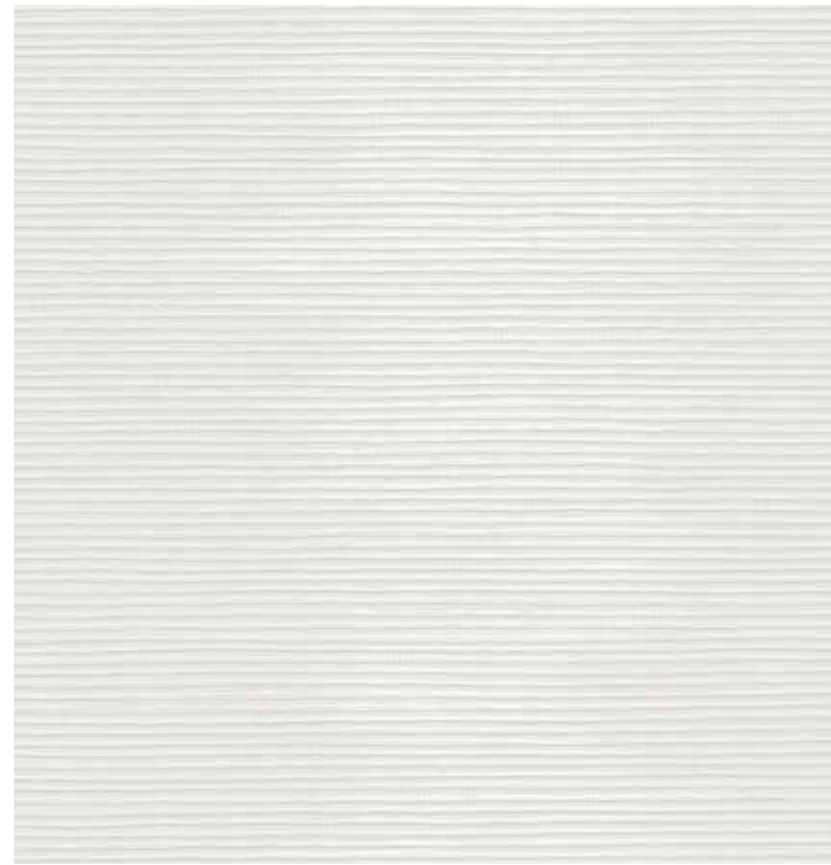
N.A.

### VERTICAL REPEAT

N.A.

Custom colors, weights, widths and microventing are available.





PWS3401



PWS3402



PWS3403



PWS3414



PWS3415



PWS3416



PWS3404



PWS3405



PWS3417



PWS3418



PWS3406



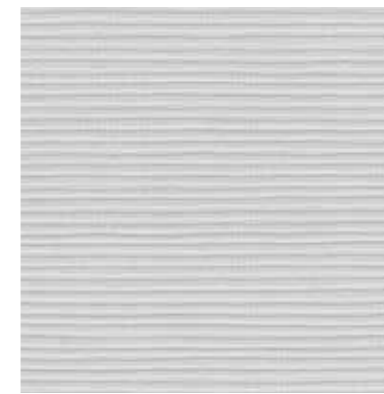
PWS3407



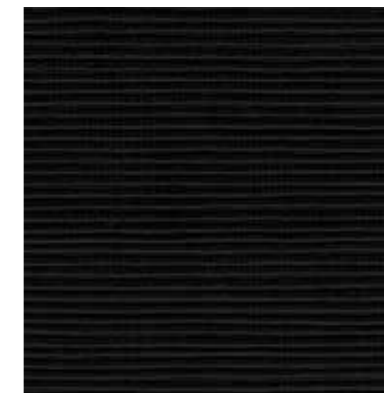
PWS3408



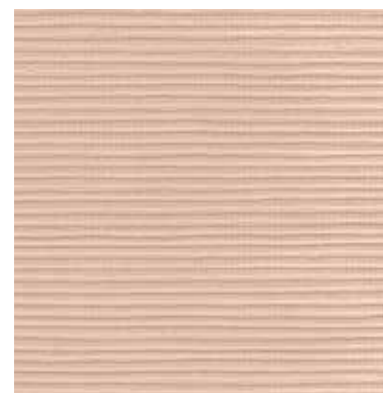
PWS3409



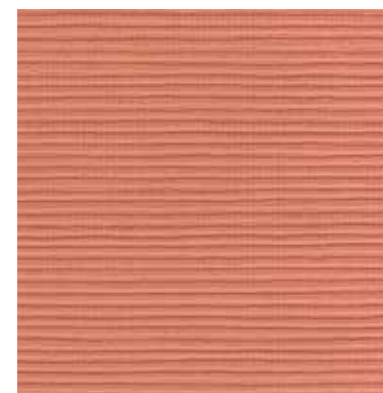
PWS3419



PWS3420



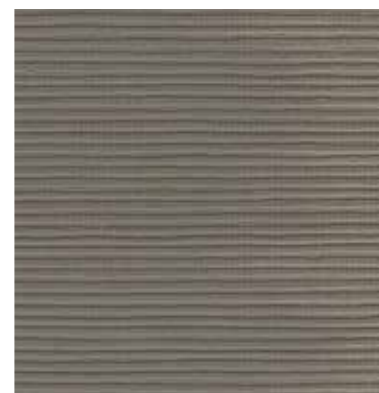
PWS3410



PWS3411



PWS3412



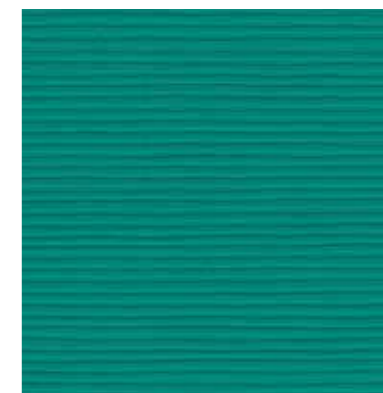
PWS3413



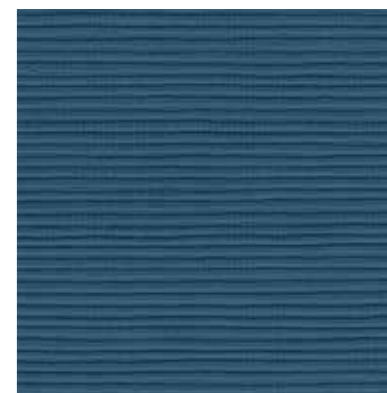
PWS3421



PWS3422



PWS3423



PWS3424

# VALLEY LINE

## SPECIFICATIONS & PROPERTIES

**WEIGHT**  
20oz. PLY / 620G/PLM 13.3oz.

**WIDTH**  
54"(137cm)

**BACKING**  
Woven

**PATTERN MATCH**  
Reverse Random

**HORIZONTAL REPEAT**  
N.A.

**VERTICAL REPEAT**  
N.A.

Custom colors, weights, widths and microventing are available.



PWS3501



PWS3502



PWS3503



PWS3504



PWS3505



PWS3506



PWS3507



PWS3508



PWS3509



PWS3510



**PWS3511**



**PWS3512**



**PWS3513**



**PWS3514**



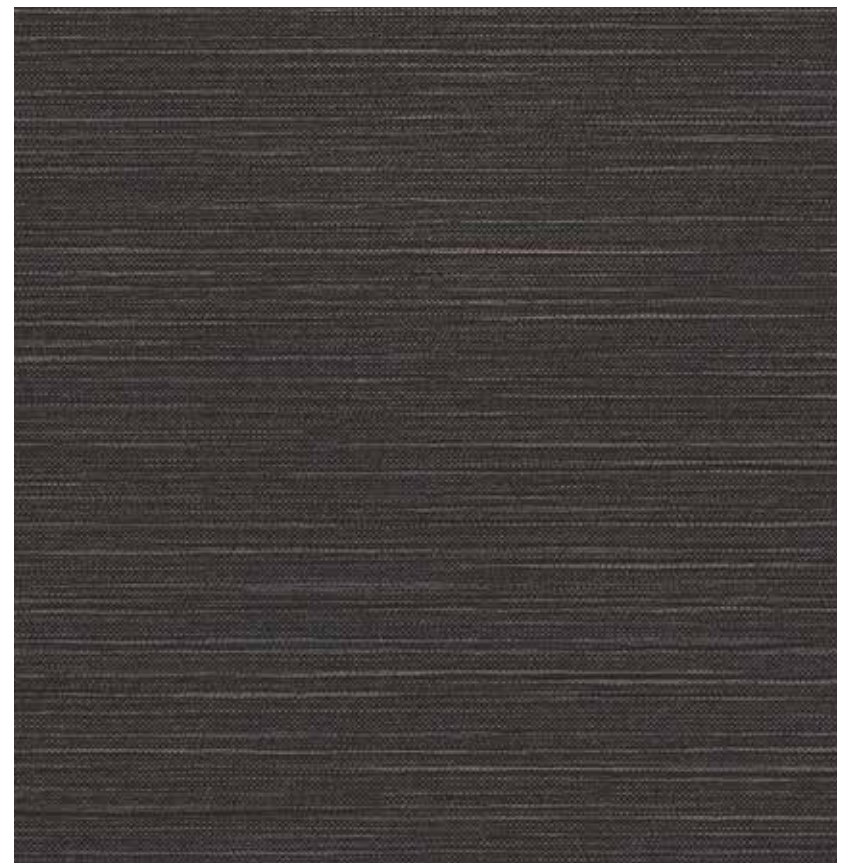
**PWS3515**



**PWS3516**



**PWS3517**



**PWS3518**

# LOOM-INOSITY

## SPECIFICATIONS & PROPERTIES

**WEIGHT**  
20oz. PLY / 620G/PLM 13.3oz.

**WIDTH**  
54"(137cm)

**BACKING**  
Woven

**PATTERN MATCH**  
Reverse Random

**HORIZONTAL REPEAT**  
N.A.

**VERTICAL REPEAT**  
N.A.

Custom colors, weights, widths and microventing are available.



**PWS3601**



**PWS3602**



**PWS3603**



**PWS3604**



**PWS3605**



**PWS3606**



**PWS3607**



**PWS3608**



**PWS3609**



**PWS3610**



**PWS3611**



**PWS3612**



**PWS3613**



**PWS3614**



**PWS3615**



**PWS3616**

# PLASTER PIECE

## SPECIFICATIONS & PROPERTIES

### WEIGHT

20oz. PLY / 620G/PLM 13.3oz.

### WIDTH

54"(137cm)

### BACKING

Woven

### PATTERN MATCH

Straight Random

### HORIZONTAL REPEAT

N.A.

### VERTICAL REPEAT

N.A.

Custom colors, weights, widths and microventing are available.

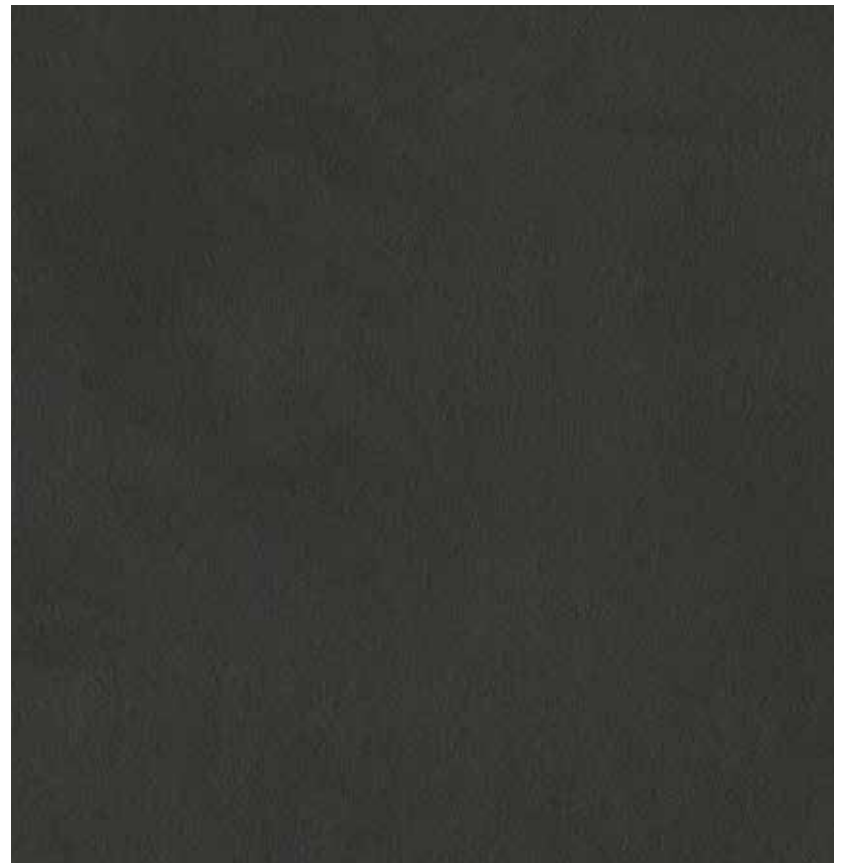




**PWS3701**



**PWS3702**



**PWS3705**



**PWS3703**



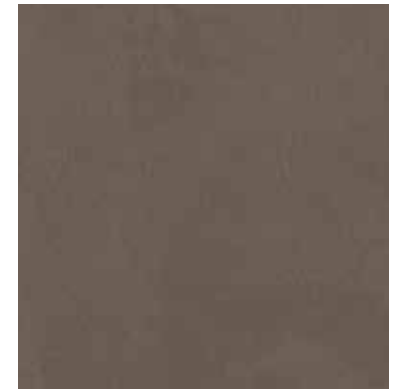
**PWS3704**



**PWS3706**



**PWS3707**



**PWS3708**

# CIRCUMSTANCE

## SPECIFICATIONS & PROPERTIES

### WEIGHT

20oz. PLY / 618G/PLM 13.3oz.

### WIDTH

52-54"(132-137cm)

### BACKING

Woven

### PATTERN MATCH

Reverse Match

### HORIZONTAL REPEAT

52"

### VERTICAL REPEAT

24"

Custom colors, weights, widths and microventing are available.

52"



24"





**PWS3801**



**PWS3802**



**PWS3803**



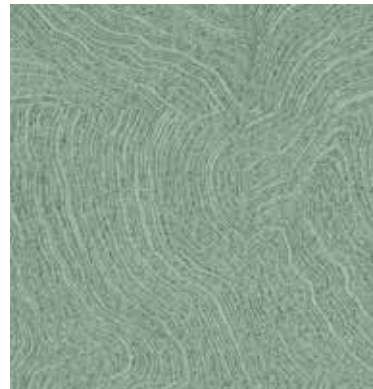
**PWS3804**



**PWS3805**



**PWS3806**



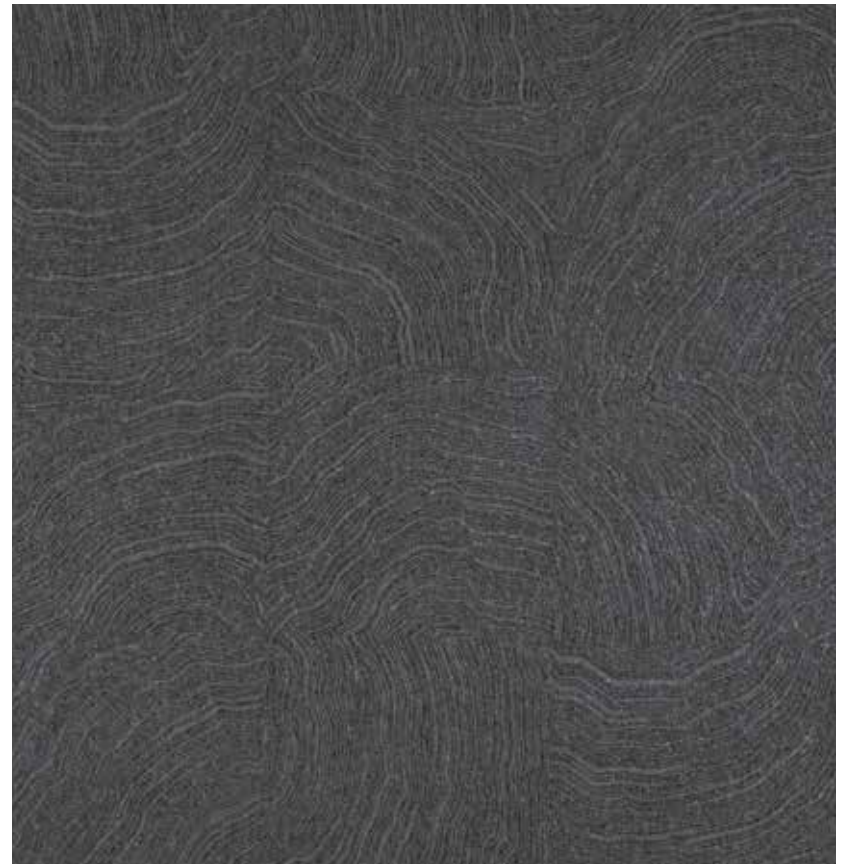
**PWS3807**



**PWS3808**



**PWS3809**



**PWS3810**

# HERITAGE WOOD II

## SPECIFICATIONS & PROPERTIES

### WEIGHT

29oz. PLY / 897G/PLM 13.3oz.

### WIDTH

52-54"(132-137cm)

### BACKING

Woven

### PATTERN MATCH

Straight Random

### HORIZONTAL REPEAT

N.A.

### VERTICAL REPEAT

N.A.

Custom colors, weights, widths and microventing are available.





**PWS3901**



**PWS3902**



**PWS3903**



**PWS3904**



**PWS3905**



**PWS3906**



**PWS3907**



**PWS3908**



**PWS3909**



**PWS3910**



**PWS3911**



**PWS3912**



**PWS3913**

# INDULGENCE II

## SPECIFICATIONS & PROPERTIES

### WEIGHT

20oz. PLY / 618G/PLM 13.3oz.

### WIDTH

54-55"(137-139cm)

### BACKING

Woven

### PATTERN MATCH

Reverse Match

### HORIZONTAL REPEAT

54"

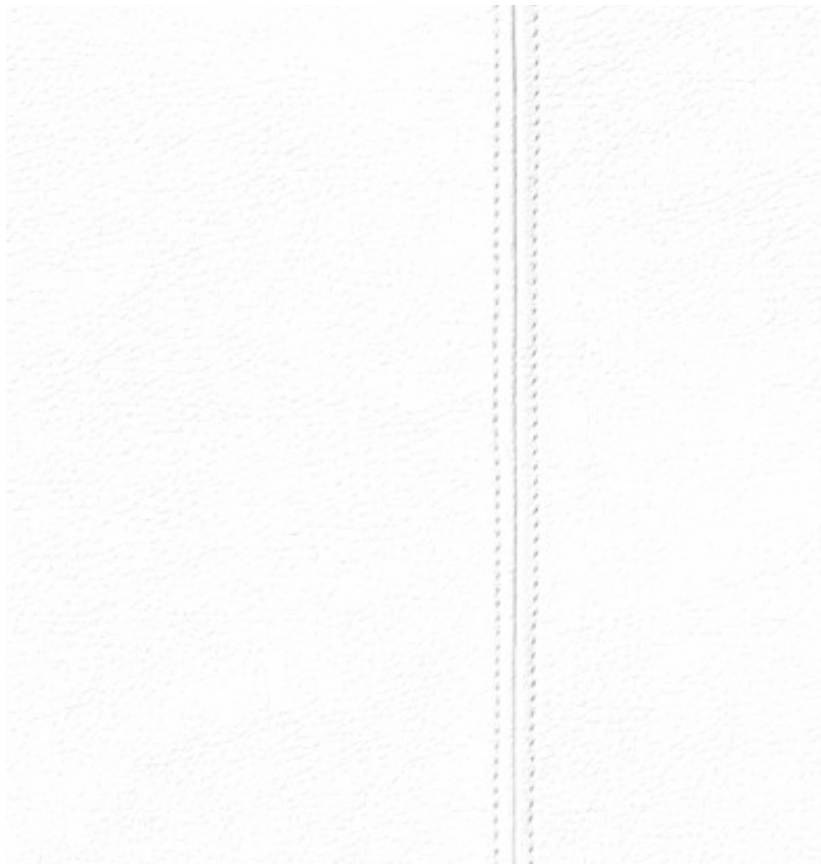
### VERTICAL REPEAT

33"

Custom colors, weights, widths and microventing are available.

54"

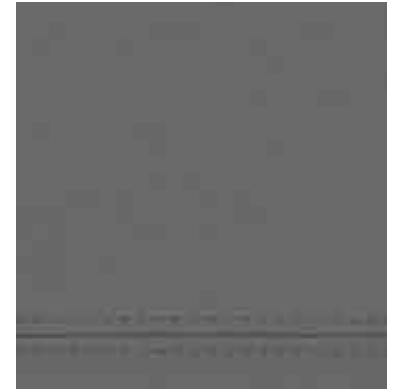
33"



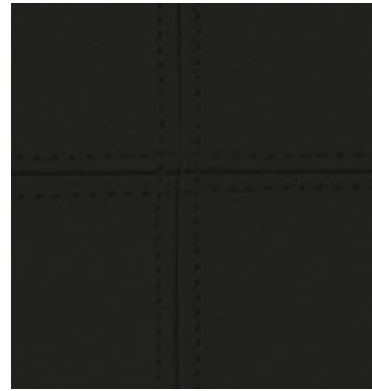
**PWS4001**



**PWS4002**



**PWS4003**



**PWS4004**



**PWS4005**



**PWS4006**



**PWS4007**



**PWS4008**



**PWS4009**

# INWOOD

## SPECIFICATIONS & PROPERTIES

**WEIGHT**  
20oz. PLY / 618G/PLM 13.3oz.

**WIDTH**  
52-54"(132-137cm)

**BACKING**  
Woven

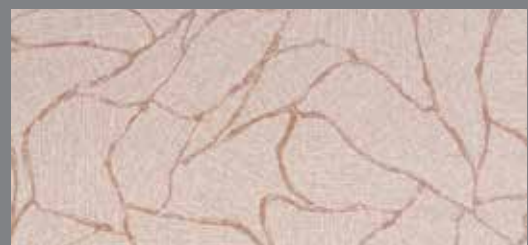
**PATTERN MATCH**  
Straight Match

**HORIZONTAL REPEAT**  
52"

**VERTICAL REPEAT**  
24"

Custom colors, weights, widths and microventing are available.

52"



24"





**PWS4101**



**PWS4102**



**PWS4103**



**PWS4104**



**PWS4105**



**PWS4106**



**PWS4107**



**PWS4108**

# STUYVESANT

## SPECIFICATIONS & PROPERTIES

**WEIGHT**  
20oz. PLY / 618G/PLM 13.3oz.

**WIDTH**  
52-54"(132-137cm)

**BACKING**  
Non Woven

**PATTERN MATCH**  
Straight Match

**HORIZONTAL REPEAT**  
52"

**VERTICAL REPEAT**  
24"

Custom colors, weights, widths and microventing are available.

52"



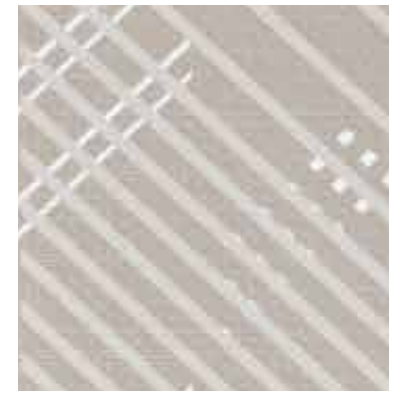
24"



PWS4201



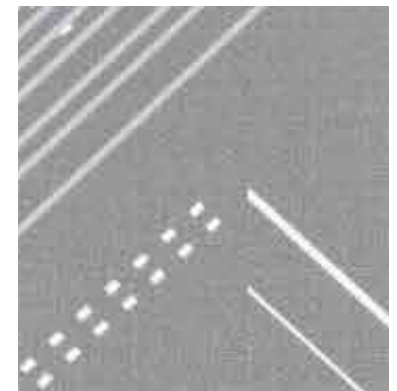
PWS4202



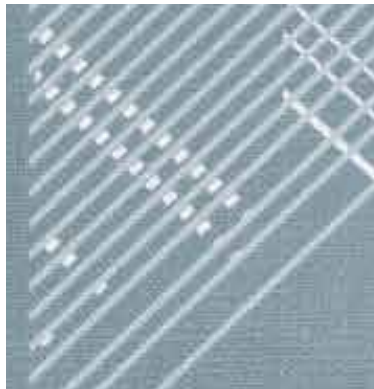
PWS4203



PWS4204



PWS4205



PWS4206



PWS4207



PWS4208



PWS4209

# UPSCALE VAGABOND II

## SPECIFICATIONS & PROPERTIES

### WEIGHT

20oz. PLY / 618G/PLM 13.3oz.

### WIDTH

52-54"(132-137cm)

### BACKING

Woven

### PATTERN MATCH

Straight Match

### HORIZONTAL REPEAT

52"

### VERTICAL REPEAT

33"

Custom colors, weights, widths and microventing are available.

52"

33"





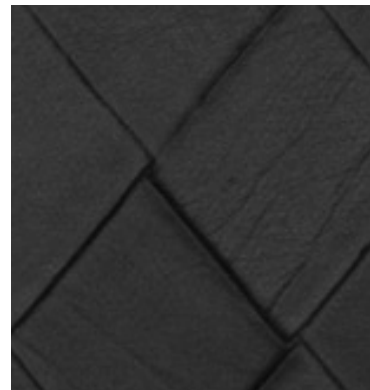
**PWS4301**



**PWS4302**



**PWS4303**



**PWS4304**



**PWS4305**



**PWS4306**



**PWS4307**



**PWS4308**



**PWS4309**

# ZENDO

## SPECIFICATIONS & PROPERTIES

**WEIGHT**  
20oz. PLY / 618G/PLM 13.3oz.

**WIDTH**  
52-54"(132-137cm)

**BACKING**  
Woven

**PATTERN MATCH**  
Straight Match

**HORIZONTAL REPEAT**  
52"

**VERTICAL REPEAT**  
24"

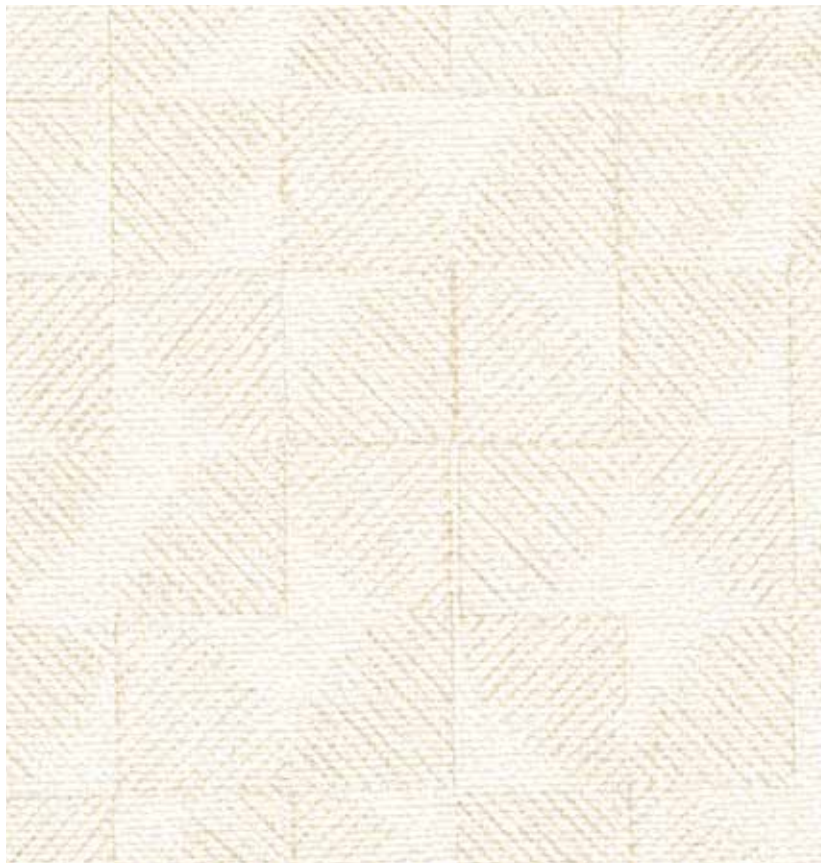
Custom colors, weights, widths and microventing are available.

52"



24"





**PWS4401**



**PWS4402**



**PWS4403**



**PWS4404**



**PWS4405**



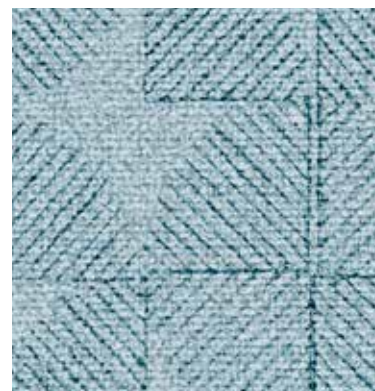
**PWS4406**



**PWS4407**



**PWS4408**



**PWS4409**



**PWS4410**

# ECHO RIDGE

## SPECIFICATIONS & PROPERTIES

**WEIGHT**  
20oz. PLY / 620G/PLM 13.3oz.

**WIDTH**  
52"(132cm)

**BACKING**  
Non Woven

**PATTERN MATCH**  
Straight Match

**HORIZONTAL REPEAT**  
52"

**VERTICAL REPEAT**  
24"

Custom colors, weights, widths and microventing are available.

52"



24"





**PWS4501**



**PWS4502**



**PWS4503**



**PWS4504**



**PWS4505**



**PWS4506**



**PWS4507**



**PWS4508**

A modern interior scene featuring a sliding light fixture, a potted plant, and a sofa. The sliding light fixture is a flat, circular disc hanging from the ceiling, illuminated from within. The potted plant is a large, leafy green plant in a white, textured pot, sitting on a wooden surface. The sofa is a light-colored, textured fabric sofa with a wooden base. The background is a wall with a subtle, geometric pattern.

# SLIDING LIGHT

## SPECIFICATIONS & PROPERTIES

**WEIGHT**  
20oz. PLY / 620G/PLM 13.3oz.

**WIDTH**  
54"(137cm)

**BACKING**  
Woven

**PATTERN MATCH**  
Reverse Random

**HORIZONTAL REPEAT**  
N.A.

**VERTICAL REPEAT**  
N.A.

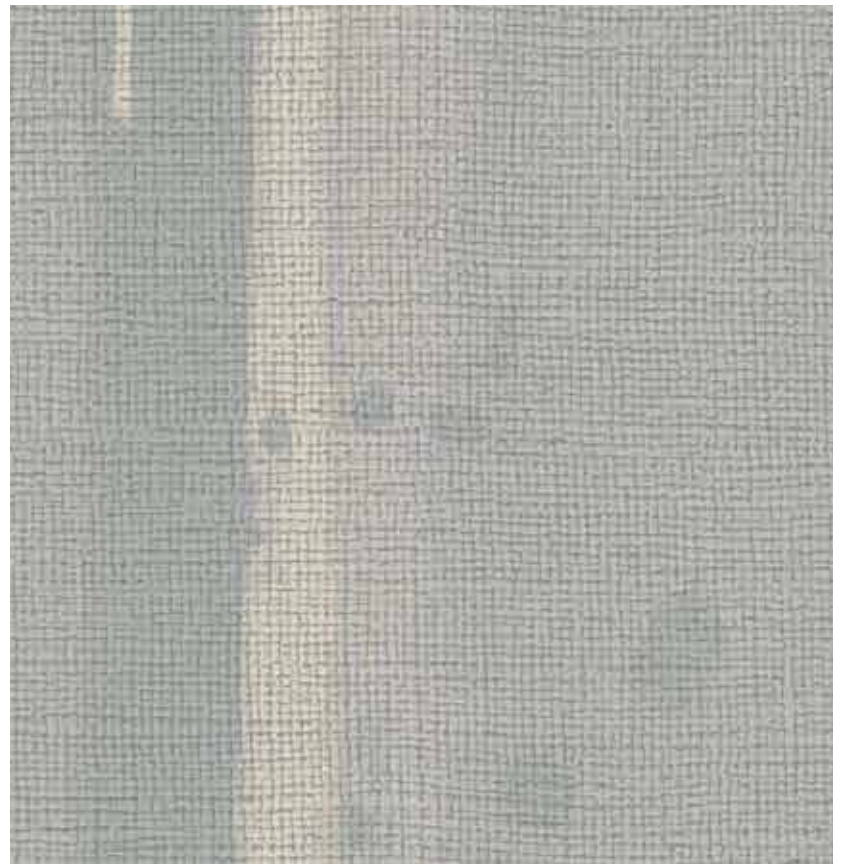
Custom colors, weights, widths and microventing are available.



**PWS4601**



**PWS4602**



**PWS4604**



**PWS4603**



**PWS4605**



**PWS4606**



**PWS4607**



**PWS4608**

# PREMIERWALL STUDIO INDEX

Page	Pattern No.	Pattern Name	Weight (oz)	Pattern Repeat		Pattern Match	Backing	Roll Size
				Horizontal	Vertical			
2-4	PWS2001-PWS2021	Axis II	20	0"	0"	Reverse Random	Non Woven	52"-54" x 30yds
5-7	PWS2101-PWS2120	Galerie II	20	0"	0"	Reverse Random	Woven	52"-54" x 30yds
8-9	PWS2201-PWS2208	Happenstance	20	0"	0"	Straight Random	Woven	52"-54" x 30yds
10-11	PWS2301-PWS2315	Haven Ave	20	0"	0"	Reverse Random	Woven	52"-54" x 30yds
12-14	PWS2401-PWS2424	Linsey	20	0"	0"	Reverse Random	Non Woven	52"-54" x 30yds
15-17	PWS2501-PWS2518	Simply Sheer	20	0"	0"	Reverse Random	Woven	54" x 30yds
18-19	PWS2601-PWS2616	Sericin	20	0"	0"	Reverse Random	Woven	52"-54" x 30yds
20-21	PWS2701-PWS2712	Sunset Park	20	0"	0"	Reverse Random	Woven	52"-54" x 30yds
22-23	PWS2801-PWS2816	Zen Grain	20	0"	0"	Reverse Random	Woven	54" x 30yds
24-25	PWS2901-PWS2908	Plastered Woven	24	0"	0"	Reverse Random	Woven	52"-54" x 30yds
26-27	PWS3001-PWS3008	Ratan	20	0"	0"	Reverse Random	Woven	52"-54" x 30yds
28-29	PWS3101-PWS3108	Zaft Weave	20	0"	0"	Reverse Random	Woven	52"-54" x 30yds
30-31	PWS3201-PWS3216	Fiji Weave	20	0"	0"	Reverse Random	Woven	54" x 30yds
32-33	PWS3301-PWS3316	Hampton Grass	20	54"	18"	Reverse Random	Woven	54" x 30yds
34-36	PWS3401-PWS3424	Hula	20	0"	0"	Straight Random	Woven	54" x 30yds
37-39	PWS3501-PWS3518	Valley Line	20	0"	0"	Reverse Random	Woven	54" x 30yds
40-41	PWS3601-PWS3616	Loom-inosity	20	0"	0"	Reverse Random	Woven	54" x 30yds
42-43	PWS3701-PWS3708	Plaster Piece	20	0"	0"	Straight Random	Woven	54" x 30yds
44-45	PWS3801-PWS3810	Circumstance	20	52"	24"	Reverse Match	Woven	52"-54" x 30yds
46-47	PWS3901-PWS3913	Heritage Wood II	29	0"	0"	Straight Random	Woven	52"-54" x 30yds
48-49	PWS4001-PWS4009	Indulgence II	20	54"	33"	Reverse Match	Woven	54"-55" x 30yds
50-51	PWS4101-PWS4108	Inwood	20	52"	24"	Straight Match	Woven	52"-54" x 30yds
52-53	PWS4201-PWS4209	Stuyvesant	20	52"	24"	Straight Match	Non Woven	52"-54" x 30yds
54-55	PWS4301-PWS4309	Upscale Vagabond II	20	52"	33"	Straight Match	Woven	52"-54" x 30yds
56-57	PWS4401-PWS4410	Zendo	20	52"	24"	Straight Match	Woven	52"-54" x 30yds
58-59	PWS4501-PWS4508	Echo Ridge	20	52"	24"	Straight Match	Non Woven	52" x 30yds
60-61	PWS4601-PWS4608	Sliding light	20	0"	0"	Reverse Random	Woven	54" x 30yds

# Installation and Maintenance Guidelines

## BEFORE YOU BEGIN

Examine the material carefully to ensure that the pattern, colour, and quality are satisfactory and as ordered. Check that the quantity and dimensions match the required specifications, prior to cutting. In the event that any discrepancies are found, STOP and contact Goodrich Global before proceeding.

We recommend that the wall moisture content does not exceed 4% using a reputable moisture meter, and that active moisture infiltration, condensation, and/or accumulation - particularly in warm, humid climates - is not present. If walls show mould, mildew or visible moisture damage, or if moisture content exceeds recommendations, do not proceed with installation until the condition has been fully corrected under the direction of a qualified professional. Goodrich Global will not be responsible for any performance or quality issues if moisture problems are not addressed before or following installation.

## HANGING GUIDELINES

Wallcovering rolls are numbered consecutively and should be cut and installed in reverse sequence, starting with the highest numbered roll. All strips should be hung in sequence as they are cut from the roll, using full widths of material, whenever possible. Install the wallcovering under permanent lighting conditions to evaluate colour and texture uniformity.

When hanging non-reversible or matching patterns, measure the wall height, allowing for pattern match, add 4", and table trim using a straight edge to ensure alignment across seams. Large, dominant pattern repeats require more careful planning as far as starting point, ceiling line, chair rails, door/window headers, etc. Patterns are meant to match at eye level and may run off slightly at the top and bottom of the wall. When hanging textured or random-match patterns, reverse hang alternate strips for a more uniform appearance; overlap and double cut, being careful not to score the wall. If the pattern effect is not acceptable after three strips are hung, re-hang strip #2 without reversing.

If any defect, colour variation, or unacceptable pattern effect is noticeable after three panels are cut and hung, STOP and contact Goodrich Global immediately. Goodrich Global cannot accept any claims on labour or material after more than three lengths have been installed.

## ADHESIVE APPLICATION

Apply a uniform coat of a premixed vinyl wallcovering adhesive to the back of the material using a short-napped paint roller or stiff bristle brush (a pasting machine can be used at the installer's discretion). Goodrich WA203 adhesive is recommended for heavyweight vinyl wallcovering. Fold each sheet over and allow up to 10 minutes booking time for the adhesive to penetrate the backing of the lightweight vinyl material (up to 15 minutes for heavyweight vinyl), and to avoid paste drying at the edges.

## WA203 READY MIXED Clear Strippable Wallcovering Adhesive

has been specially formulated for use with the most types and weights of wallcoverings, including LUXURY VINYLs (both paper and fabric backed), TEXTILES, HESSIANS, NON-WOVENS, and COMMERCIAL WALLCOVERINGS.

Recommended for use with all kinds of wallcoverings.

## COVERAGE

Approximately 7 square meters per kg.  
**Very Low VOC** (g/L per ISO 11890-2)

## CERTIFICATIONS

Singapore Green Building Product - SGBC Very Good

California Department of Public Health (CDPH) Standard Method v1.2 Certified

NSF/ANSI 642 Sustainability Standard Certified



## INSTALLATION

Hang the first strip to a plumb line, overlapping the ceiling and baseboard, within 12 minutes of paste application. Use a stiff bristle brush to ensure that the wallcovering makes contact with the wall. A plastic smoother can also be used on non-metallic Vinyls, providing only light pressure is applied (do not use sharp-edged tools). Smooth from the middle to the outside edges, being careful not to stretch the material, and work out all air bubbles. Trim at the ceiling and baseboard with a sharp razor blade. For matched patterns, butt the second strip to the edge of the first and smooth out firmly. When double cutting non-matching patterns, place a 2-3" wide strip behind the seam to avoid scoring the wall. Flatten seams exerting light pressure with a seam roller. Low-adhesive painter's tape can be used to keep the face of the seams clean. Before applying the next strip, trim the top and bottom as with the first panel, and proceed in the same manner around the room.

Avoid cutting narrow widths of material for placement above doors and below windows. Vertical joints should not occur less than six inches from inside or outside corners. When trimming at chair rails and ceilings, always use a broad knife rather than a straight edge. Take extra care in keeping the adhesive off the face of the wallcovering.

Remove excess adhesive immediately with a natural sponge, frequently rinsed in clear, warm water, and dry with a soft, lint free cloth. After installation, the walls and wallcovering should be monitored for potential moisture or vapour infiltration, which must be promptly eliminated.

## MAINTENANCE

Most wallcovering is easily cleaned using clear, warm water and mild soap with a natural sponge. A soft cloth or towel should only be used to tamp dry (do not rub). Stubborn stains can be removed with a laundry spot remover or rubbing alcohol. Do not use solvent-based cleaning agents, lacquer thinners, nail polish remover, pine oil, or cleaning agents containing bleach, which may cause discoloration over time.

**Note: The above is intended only as a guideline. Wallcovering installations must conform to current hanging instructions included with each shipment. The installer has final responsibility for proper installation and evaluation of jobsite conditions.**

PREMIERWALL  
**STUDIO**

2026-2029

Stay Connected - [www.goodrichglobal.com](http://www.goodrichglobal.com) | [info@goodrichglobal.com](mailto:info@goodrichglobal.com)



[/Goodrich.Global.Singapore](#)



[/goodrich\\_global](#)



[/GoodrichGlobal](#)



[/goodrichglobal](#)



[/GoodrichGlobal](#)



[/goodrichglobal](#)



[/GoodrichGlobalOfficial](#)

SINGAPORE [HQ] | MALAYSIA | THAILAND | VIETNAM | MYANMAR | INDIA | INDONESIA | UNITED ARAB EMIRATES | PHILIPPINES | CHINA | HONG KONG (CHINA)

Copyright © 2026 Goodrich Global. All rights reserved.